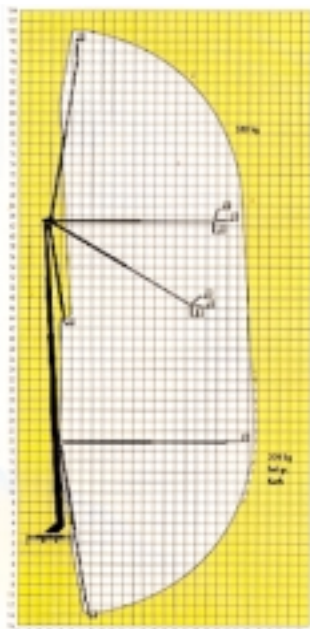


TRUCK MOUNTS

Ascent of the GIANT

One of the star attractions of next month's bauma is without doubt Gardemann's new 100 metre truck mounted platform from Ruthmann.

Tim Whiteman witnessed the first ascent to 100 metres



The TTS1000 has a maximum working height of 100 metres but can also manage a radius of 40 metres at 63 metres height

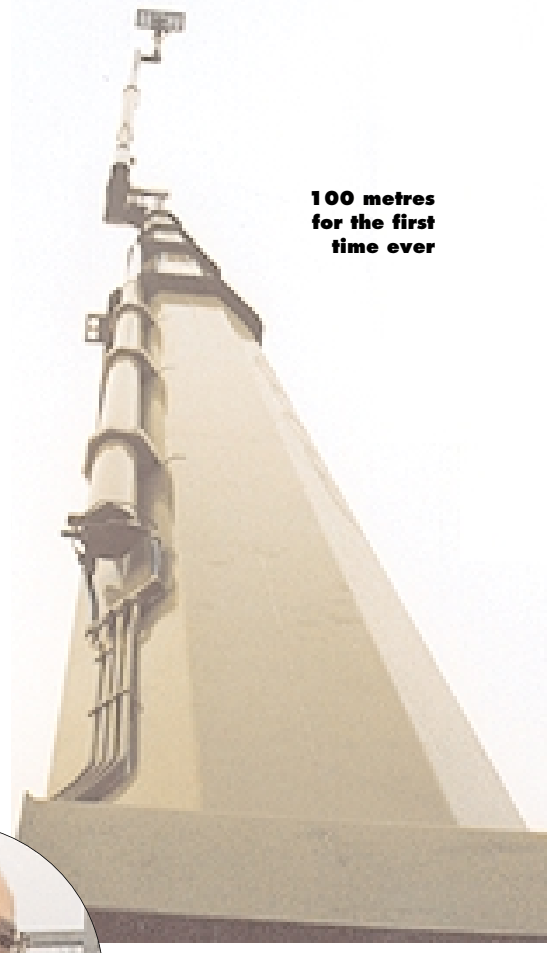
A gradual hush descended on Ruthmann's factory in Munster, north west Germany on the day that the TTS1000 first went to 100 metres. Present for the momentous event were Hubert Ruthmann, managing director of the company that his father founded, Karl-Hans Franzen, managing director of Gardemann, the giant's first owner, and Hubert Gardemann, marketing director of Gardemann. They were joined by everybody who could get away and stand outside, necks craning upward.

The unit itself was about 75 per cent

complete and the most obvious sign of this was the fact that control panels were missing – operation was a delicate feat accomplished by engineers with a variety of tools. Nonetheless, the whole event went off without a hitch. The enormous boom gracefully unfolded, stretched and then arched its way up to 100 metres in less than 15 minutes. Then the boom pivoted on the articulating joint and within a few minutes the basket was a staggering 40 metres out from the main boom, albeit at 63 metres working height.

The ability to work at a radius of 40 metres while at 63 metres height is one of the most impressive attributes of the TTS1000. Even at this radius the basket has 500 kilograms of capacity and 1 metre by 2.5 metres of space. This can be extended to four metres width.

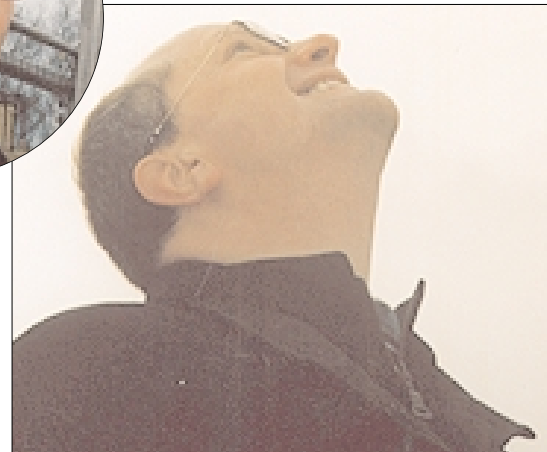
For transport, the boom folds down to fit on a 6-axle trailer pulled by a permanently connected three axle commercial tractor unit. Originally (see sketch below) the trailer was expected to have five axles. During operation the drive unit remains coupled to the trailer to act as a counterweight. Even without the final installation of all soundproofing panels, the TTS1000 was impressively quiet.



100 metres for the first time ever



Hubert Ruthmann (above) and Hubert Gardemann (right)



So who will use this 100 metre giant and will we see it in the UK? The first unit will be delivered to Germany's Gardemann after bauma and a second unit will go to Gerken, another of Germany's large hire companies soon afterwards. Enquiries for a third unit have come from as far afield as Poland, Scandinavia and the Far East. No serious enquiries have apparently been received from this side of the Channel. However, Gardemann does not rule out the possibility that the TTS1000 may one day be contracted to do some work in the UK: "This machine is designed to be highly roadable and can cover about 800 kilometres in a day – that would get it from Munster to London!"

The cost of the giant is around DM2.6 million (£800,000) alternatively it can be yours for DM10,000 (£3,500) a day! ■