

Lavendon goes higher

The Lavendon Group has made another UK acquisition, snapping up Higher Platforms - the Cannock-based access rental company - for a total of £8.9 million. The purchase price is made up of £7.6 million in cash with an additional £1.3 million payable on August 3, 2008. Leigh Farmer the owner/manager of Higher Platforms will remain with the business, joining Lavendon UK's regional business management team.

Higher Platforms had a fleet of 435 aerial lifts operating from four locations. Revenues last year were £4.6 million, with a pre tax profit of £1.1 million. Gross assets were £6.8 million and net assets of £3.9 million.

Farmer said: "We see this as a great opportunity for Higher Platform's staff and customers. We have built a strong business over the past few years but recognised that we needed to find a way to offer a broader range of products and services. This deal

offers us the advantages of a large, national company structure but allows us to keep our business culture and customer relationships intact. It also offers increased career opportunities for our staff."

Lavendon UK's chief executive Andy Wright said: "Higher Platforms is an excellent business with an enviable reputation, it employs a great team of people. Its addition is positive news for Lavendon UK."

...And reports a 654% jump in profits

As we go to press Lavendon has confirmed record first half revenues of £83.3 million, an increase of 46 percent on 2006. Profits before tax leapt by a massive 654 percent to £8.3 million from £1.1 million last year. With a strong July and August under its belt, the company is raising its full year expectations.



(L-R) Paul Figgins and Andy Lyndon of LDC, Neil Meredith of KPMG, Ian Mayland and Peter Piekarus of Kimberly Access.

Ray Ledger buys into Kimberly

Ray Ledger has lead a Management Buy-Out at Stoke-based Kimberly Access, funded by LDC private equity. The majority shareholder, Gary Smith who has sold out, has always made it known that when he came to sell the business his preference would be via an MBO.

Smith started Kimberly 13 years ago with Peter Piekarus and was the 15th largest access rental company in the 2006 C&A Top 30. The company has a fleet of more than 1,000 aerial lifts and 50 telehandlers with revenues in the region of £11 million.



Ray Ledger

Smith worked with Ledger in the 1980's at PTP - then part of BET- and has said that he could not think of anyone he would prefer take over his role at the company. Ledger takes over as chairman from Smith, while Piekarus continues in his role as managing director. Both men own 15 percent of the restructured company.

Doosan buys Bobcat

Ingersoll-Rand has sold its Bobcat business to Korea's largest construction equipment maker, Doosan infracore, for \$4.9 billion in cash. The deal is expected to complete in the fourth quarter. Doosan is also the corporate name for Daewoo construction equipment which it acquired in 2005.

Brand new strategy

Tanfield has defined its branding strategy following its acquisition of Snorkel in July. The two product lines will merge and the Snorkel name will be dropped in Europe, Africa and the Middle East in favour of UpRight, while in the Americas, Australia and New Zealand the Snorkel brand will predominate.

For overlapping products such as the MX19/SL19 the product built by the prevailing brand will continue to be marketed while the other will be dropped.

The move gives each brand 10 new products. In Europe the UpRight product line immediately gains the New Zealand-built X27RT/X33RT compact RT scissors and the X40RT scissor lift, the AB50JRT, AB60JRT and AB85RJ articulated booms and the SB47JRT, SB66JRT, SB85J and SB126J straight boom lifts with jibs.

In the dollar orientated regions of the world Snorkel also gains 10 models from UpRight, including the TM12 (as the SL1230), Speed Levels, Mast booms, trailer lifts and the AB38 micro boom. Tanfield has a series of distributor and rental company meetings this month and will announce further details. In the UK UpRight is still talking to IPS the UpRight Distributor and APS, the Snorkel distributor regarding the future development of its UK market coverage.



Snorkel: gains mast lifts, trailers and Speed Levels - The Snorkel SL1230



UpRight gains a boom lift range - The UpRight AB85JRT



Members of the Access Link at the recent meeting at IPAF headquarters in August.

Access link up

The Access Link, the UK association of independent regional access rental companies has admitted two new members, Charles Wilson Engineers and Lifterz. Charles Wilson will add capacity and coverage in London, South East England, Liverpool and Manchester while recently formed Lifterz will improve coverage in Yorkshire. The link now comprises 17 member companies with a combined fleet of 3,800 units.

Skyjack takes Carelift...

Skyjack has entered the telehandler market with a flourish by acquiring fellow Canadian manufacturer Carelift. Founded in 1962, it is based in Breslau, Ontario and produces a range of heavy duty telehandlers it markets under the ZoomBoom brand.

The current product range includes machines with 10 to 19 metre lift heights and lift capacities up to 14,500kg. The deal is a share purchase and is subject to ongoing due diligence. Skyjack announced that its plans to enter this market back in February.



Carelift manufactures heavy duty telehandlers under the ZoomBoom brand

...and moves into Sweden

Skyjack has also purchased the assets of N-C Liffteknik of Gothenburg, its Swedish distributor, which also trades under the Nordic Lift name. Skyjack will operate the new company, which was founded in the mid 1980's as a wholly owned subsidiary, with the objective to increase sales of Skyjack booms and scissor lifts throughout the Nordic region.

Manitowoc adds production

The Manitowoc Company has acquired a manufacturing facility in Saris, Slovakia, from Valcovna profilov. The facility will be refurbished and re-equipped to serve as the final manufacturing and assembly site for Grove, Potain, and Manitowoc cranes being delivered to customers in Eastern Europe, particularly Russia and the CIS. It will initially be used handle the latter stages of the production process, such as painting, assembly, testing and shipping for Potain's range of top-slewing tower cranes. The company also plans to manufacture Potain's K masts at the plant using chords welded at its plant in Moulins, France.

...And in India

The company has also acquired Shirke Construction Equipment of Pune, India, the leading player in the Indian tower crane market. Shirke and has been a manufacturing partner and distributor for Potain since Richier was acquired in 1982. It has been building tower cranes under license since the early 1970's. The company, which is also the Potain distributor for Sri Lanka, Nepal, Bangladesh, and Bhutan has been renamed as Potain India, with Shirke CEO T. R. Badarinarayan as president. The company will continue to manufacture tower cranes under the Potain name at its 17,000 square metre production facility which has 350 employees.

The new seven axle Spierings SK2400-AT7



City Lifting gets in first

City Lifting - the London-based crane hire company - has taken delivery of the first seven axle Spierings SK 2400- AT 7 mobile tower crane in the UK. The company has pioneered the Spierings product in this country and currently operates a fleet of 12 topped out by the new model. The AT7 can handle six tonnes at 42 metres radius and a 36 metre hook height allowing it to compete head to head with most 300 tonne telescopic cranes. City Lifting is also the first company to take delivery of the new Unic 706 mini crane in Europe. It is also expecting a new Locatelli AT20 city crane complete with EN280 aerial work platform attachment.

Lloyd Spalding to retire

Skyjack president, Lloyd Spalding has announced that he will retire at the end of February 2008. Ken McDougall - currently president of Linamar's Industrial Group - will take over the president's role at Skyjack.

ACF buys Genie

ACF has added 70 Genie telehandlers to its fleet



ACF the Burwell, Cambridgeshire-based telescopic handler rental company has ordered 70 Genie telehandlers - a mixture of compact six metre GTH-2506 and seven metre GTH-3007

units along with a number of the 12 metre GTH-3512 models.

WRCA ropes in Casar

The Wire Rope Corporation of America has agreed to purchase specialist wire rope producer Casar Drahtseilwerk Saar of Kirkel, Germany. WRCA plans to use Casar as the base for all of its European operations and will lead to new investment in plant and equipment at the Kirkel facility. Casar is a leading European manufacturer of high performance wire rope for crane use, for both land and offshore applications.

First 90 metre in UK

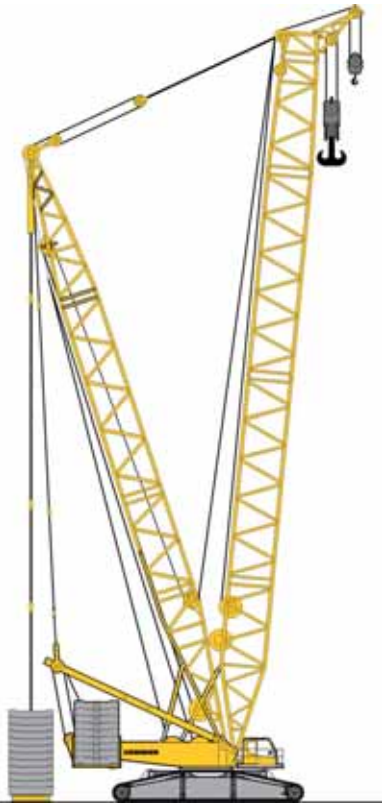
The first 90 metre aerial work platform to be based in the UK, a Bronto S90HLA, has been delivered to Zenith Aerial Platforms, the company owned jointly by Mark Butler and Andy Ainsworth that was initially launched as Mammoth.



The new Bronto S90HLA the UK's largest

New 600 tonner

Liebherr has announced a new 600 tonne lattice boom crawler crane, the LR 1600/2 targeted at wind turbine erection. Based on the larger LR1750, the new crane's maximum capacity is rated at 10 metres radius on a 48 metre main boom with derrick system. Maximum tip height is 180 metres comprising 96 metre main boom with an 84 metre luffing jib ideal, says Liebherr, for plant construction. The unit is said to offer lower transportation and erection costs and is capable of being set up without the need for an assist crane, to place 3MW turbines on top of 100 metre towers. When fitted with derrick system, the same turbines can be mounted on 120 metre towers.



The new 600 tonne Liebherr LR1600/2

The main superstructure counterweight is made up of 10 tonne slabs up to a total of 190 tonnes. The derrick boom can be extended up to 36 metres and equipped with maximum derrick ballast of up to 350 tonnes.

For transport the crane's carbody, superstructure and 'A' frame weighs 74 tonnes and is only 3.2 metres high so that it can be carried on a one metre high semi low-loader. The height of the boom sections allow counterweight slabs to be stowed underneath them.

Each track assembly with two metre track pads weighs less than 40 tonnes for transport on a four axle semi low-loader. Narrower 1.5 metre wide track pads are also available.

The first machines are expected to be shipped during the first half of 2008. A full report is available on www.vertikal.net

Kobelco cranes up 42%

Kobelco has published its full year audited accounts for the 12 months to the end of March 2007. Crane revenues climbed 42 percent compared to last year, while unit shipments were up 38 percent to 730 units. Pre tax profits jumped 125 percent to 4.95 billion yen (£20 million) while net income increased by 134 percent to almost 3 billion yen (£12 million).

Kobelco exported around 80 percent of its production and says that the outlook for the current year is positive, forecasting revenues of 66 billion yen (£267 million) for the coming year.

TIE-up modified

Manitou and Toyota have changed their manufacturing relationship. Manitou has reduced its holding from 40 to 20 percent in Ancenis-based TIE (Toyota Industrial Equipment), the joint venture formed in 1995 to assemble Toyota forklift trucks in France. At the same time Manitou will invest €9 million in a new manufacturing unit with an annual production capacity for up to 20,000 masts of the new range of Toyota forklifts due to be launched later this year.



Midland truck mounts

Midland Access' first two truck mounted lifts are ready to go.

Midland Access Platforms, the Leicestershire-based powered access company, has purchased its first two truck mounted lifts, a 19.8 metre working height GSR 198PX from SkyKing and a 34 metre Bronto Skylift 34MDT.

Founded in 1999 by Rob Stafford and Steve Beynon, the company has steadily built up its self propelled and specialist fleet to service its regional customer base.

Liebherr confirms big numbers

Liebherr has confirmed 2006 revenues up 22 percent to almost €6.5 billion, roughly €2.2 billion of which relates to cranes. Mobile and large crawler crane sales were up by more than 23 percent to €1.37 billion. Tower cranes and concrete products saw an increase in revenues of almost 42 percent to €709 million, while the Maritime crane division posted sales of €422.6 million, an increase of almost 30 percent on 2005.

At the end of 2006 the group employed 26,337 staff and invested €410 million during the year.

Cranes Zoom into UK

After a very successful evaluation period, Crowland Cranes has confirmed its order for the first 10 units of the 32 tonne Zoomlion QY30V truck mounted crane.

The first batch of five cranes will arrive in the UK in late September for preparation and delivery before year end. The following five will arrive for delivery in January. All 10 units are pre-sold.

Peter Issitt of Crowland Cranes told C&A that he plans to build up sales at a steady pace offering a consistent four month delivery period once regular shipments are underway.

He added that the evaluation crane has been out on hire for three months on a wide variety of applications without suffering any down time. The company is currently investing in a parts inventory to ensure that customers have strong product support.

The QY30V is rated with 32 tonnes at three metres radius, lifts 30 tonnes to 3.5 metres, 16 tonnes to seven metres and will take a tonne out to 28 metres.

The 34 metre full power main boom can be extended with an eight metre fly jib.

The Zoomlion QY30V





Hiab depot in East Anglia

Hiab has opened a new service depot in Wisbech, Cambridgeshire, the new facility will provide crane mounting, general servicing and sales support for its customers in East Anglia. The move follows the bankruptcy and liquidation of Hiab's local dealer, Lorry Loaders Ltd in June. The new depot, a first for Hiab, is aimed purely at filling the customer support gap. Hiab says that this is a response to a particular situation and not a new distribution policy; it will continue to use its national network of independent agents in other parts of the country.

Wizard goes into Nationwide

As expected, the Lavendon group has integrated Wizard Workspace into its Nationwide Access business. Unlike the regional businesses that Lavendon has acquired over the past 18 months, Wizard followed a similar business model as Nationwide with overlap in outlets and product offering. The Wizard name was also not well established, the company, previously Independent Access Supplies, was re-branded following its buy out from the administrator. Wizard has around 1,300 units which will boost the Nationwide fleet, already Europe's largest, to around 7,000 machines.

XCMG to invest in Dubai

China's largest construction equipment manufacturer Xuzhou Construction Machinery Group (XCMG) is investing \$15 million in a regional logistics centre in Dubai. The company says that it also expects to produce 1,000 cranes this year, most of them being small truck mounted models.

Qi Hong, XCMG's regional director said: "The Middle East is our most well established and fastest-growing overseas market, we have sold more than \$400 million worth of products here in the last three years. We are looking for a 20,000 square metre site and hope it will be operational within a few months."

Truck investment

Nationwide Skylift has taken delivery of its first 37 metre Ruthmann T370 truck mounted platform. The new unit is one of five T370's that Nationwide Access has purchased as part of its £4

million, 47 unit investment in new truck mounted lifts.

Features that appealed to Nationwide included variable jacking widths, a 500 kg maximum platform capacity, an extendable basket from 2.3 to 3.6 metres and a 30 metre maximum outreach.

Peter Douglas, Nationwide's commercial director, said: "These machines provide us with some good features that our current fleet of 34 to 44 metre Brontos do not have. The first hire involved six days at the Open Golf Championship in Carnoustie."

Nationwide's new Ruthmann T370



MATILSA

PARMA 12T

PARMA 12T

PARMA 12

PARMA 15

PARMA 17

00 34 976 535 093

00 34 976 534 645

matilsa@matilsa.es

www.matilsa.es

Its Half year results time

With most companies in our industry running on a calendar year August is the time for half year numbers, a good indicator of market conditions. The following is a brief round up, full details and analysis is available on www.Vertikal.Net

Manitou up 15 percent

Telehandlers and access producer Manitou saw first half revenues improve by nearly 15 percent to €671 million, while its order book jumped by 50 percent. The EU represented 87 percent of sales, 37 percent in France.

New record for Haulotte

The Haulotte group reported first half revenues up 31 percent to €310.2 million, a new record. Order intake grew by 50 percent compared to last year. Based on these figures it is forecasting full year revenues of around €650 million, a rise of 25 percent and holding its earnings forecast of 12 percent of sales.

Terex Cranes up 29%

Half year revenues at Terex Cranes were up by 29 percent to just over one billion dollars, while operating profits leapt by almost 75 percent to \$109.8 million -10.5 percent of sales. At the same time the company's order book grew to \$1.4 billion, over eight months at current production levels.

Genie up 14.5%

First half sales at Terex Aerial Work Platforms rose 14.5 percent to a record \$1.19 billion. Income from operations increased almost 30 percent to \$246

million. European sales improved sharply, North American aerial lift demand held steady, while telehandler sales dropped steeply. The company's order book climbed 18 percent to \$789 million.

Manitowoc Crane up 42%

Manitowoc Crane Group reported revenues up 42 percent to \$1.49 billion, 79 percent of total Manitowoc sales. Operating income jumped 71 percent to \$216.4 million, while the crane order book increased by 85 percent to \$2.1 billion.

Strong first half for Palfinger

Palfinger - the crane and access manufacturer - reported first sales up 18 percent to €341 million with after tax profit climbing by almost 38 percent to €39.2 million. The company says that strong order intake boosted its backlog.

Skyjack earnings up 75%

Skyjack boosted first half revenues by C\$59 million (\$56 million) compared to 2006 (parent Linamar does not provide more detail). Full year 2006 revenues were C\$371 million (\$314 million). Half year operating profits leapt by 75 percent to \$43.6 million (\$41.3 million).

Strong quarter for JLG

JLG, now the access equipment segment of Oshkosh, reported third quarter revenues of \$873.8 million, 38 percent up on last year. Operating income was \$98.3 million, or 11.3 percent of sales.

JCB up 23%

JCB has reported full year revenues of £1.75 billion, an increase of 23 percent on last year. Profits leapt by 35 percent to £149 million.

Hiab up four

Hiab saw first half sales improve by four percent to €485 million. Order intake for the period was €508, leaving an order book of €238 million.

Smart. Compact and mobile. Round basket for the urban jungle.
DINO lifts you up. Gets your work done. Get lifted with DINO®.

DINO 120T TECHNICAL SPECIFICATION

Working height	12.0 m
Platform height	10.0 m
Outreach	7.9 m
Transport length	5.52 m
Lifting capacity	120 kg
Basket	Ø 0.85 m
Boom rotation	continuous

DINO Lift
Get Lifted

Raikkolantie 145, FI-32210 Loimaa Finland
www.dinolift.com



Paul Fairhall (R) takes delivery of the first batch of 1230ES from Lee Edwards of JLG. Beckton-based London Tower Service has taken the first JLG 1230ES mast lift in the UK. The order - which includes 24 of the new vertical mast lifts - takes its fleet of JLG machines to more than 100 units. A further 50 JLG units are scheduled for delivery in the coming months.

"The 1230ES is an important addition to our fleet because we foresee an increasing demand for this type of compact unit. It is light, easy to transport, and cost-effective, especially for the vast amount of new construction and internal finishing work which is going on in the City of London, and it meets the demand for machines which comply with the increasingly stringent work-at-height regulations."



Generators Limited

UKG Hydraulic Generator

The UKG Hydraulic Generator is a 3.5 kVa hydraulically driven, single phase onboard ac power supply designed for installation onto most access platforms.



- ✓ No additional fuel costs
- ✓ Reduction in service and maintenance costs
- ✓ No noise emissions
- ✓ Quick & Easy installation
- ✓ Pressure Compensated Flow Control Valve and on/off solenoid valve
- ✓ Earth leakage circuit breaker protection
- ✓ Choice of either 110v/220v, 50/60 hz models.

Tel: 01536 747500
sales@ukgenerators.co.uk

Vp buys in Scotland

Vp, the UK based owner of UK Forks and Hire station, previously known as Vibroplant has purchased ET Hire in Scotland, a traditional tool hire business with three outlets. The price paid was £1.1 million in cash. Neil Stothard, group managing director at VP, said "The acquisition of this business significantly strengthens our distribution capability in Scotland in support of revenue growth opportunities available for tool hire in this region."

United Rentals Sold

United Rentals, the world's largest rental company and operator of the world's largest fleet of aerial work platforms has agreed to be bought by Cerberus Capital Management for \$6.6 billion, including \$2.6 billion of existing debt.

Cerberus will pay \$34.50 in cash for each share of United Rentals, a 25 percent premium on the closing price of April 9, the day before United offered itself for sale.

The company operates from just under 700 locations in the U.S., Canada and Mexico, with 12,000 employees and revenues in 2006 of \$3.65 billion.

A date at the Palace

An 80 tonne Tadano-Faun owned by Ace Crane & Engineering of Gravesend, Kent was summoned into Buckingham Palace earlier this summer. The ATF 80-4 crane was needed to lift replacement walkway sections onto the roof area of the Palace. It was compact and manoeuvrable enough to enter by the front gate and pass through the entrance arch to the central areas.

The crane was compact enough to slip through the entrance arch.



SKYLIFT
HIRE SALES TRAINING

YOUR IRISH ACCESS PARTNERS

- IPAF Training
- 24 Hour Support
- Full Range of Electric & Diesel Scissor Lifts
- Electric & Diesel Articulating Booms
- Diesel Telescopic Booms
- Trailer Mounted Platforms
- Telescopic Forklifts
- Special Access Machines



CONTACT US ON:

DUBLIN +353 01 459 46 46
 CORK +353 021 488 66 46
 LIMERICK +353 061 30 46 46
 GALWAY +353 091 50 46 46
 e. sales@skylift.ie

www.skylift.ie

InnoVation in access

Vital
Vibrant
Valuable
Versatile



- Walk in bucket
- Jackless models
- Jacks from bucket
- Extended outreach
- Lightweight booms
- 265kg SWL options
- IPAF training centre
- 420° rotation option
- Proportional controls
- Low voltage insulation
- Telescopic main boom
- High voltage insulation

Versalift Distributors (UK) Ltd.
1 Altendiez Way, Latimer Park,
Burton Latimer, Northants, NN15 5YT.
Tel: 01536 721 010 Fax: 01536 721 111
Email: sales@versalift.co.uk



www.versalift.co.uk

Rise Hire on the up

Van mounted lift rental company Rise Hire, recently acquired by Lavendon, has placed orders for 66 new platforms with Versalift and Gardner Denver.

The 52 new Versalift van mounts include 12.9, 14.2 and 16.5 metre working height units mounted on Ford Transit and Iveco Daily chassis.



One of the new Versalift ET36NF van mounted lifts ordered by Rise Hire.

Also on order are 14 new Land Rover Defender 110 HD 4 x 4 platforms based on the new GD13.5 metre design mounted booms from Gardner Denver.

A passage across India

Two adventurous ladies with ties to the UK access industry are planning to cycle almost 400km across the Rajasthan region of India in five days in aid of the Lighthouse club and the 'Women for Women' charity.

Vicki Caldwell, the mother of Russell Rowley of Russon Access, is a 65 year old with a desire to remove the old out of OAP while while Nicola Edwards is '30 something with a desire to be thin again.'

Your sponsorship of this intrepid pair will be much appreciated.

Donations or pledges can be made through Russell:

Tel: +44 (0)7799 118462 or email: Rrowley205@aol.com.

(L-R) Vicki Caldwell and Nicola Edwards in training.



Tadano opens new plant

Tadano has officially opened its new, 20,700sq metre loader crane plant in Tadotsu, Japan. The plant adjoins the Shikoku Kiko plant, a wholly owned Tadano fabrication subsidiary, which produces the loader crane chassis frames.

The first units went into production at the end of July followed by a ceremony attended by 130 customers and employees along with the mayor of the town. During the ceremony Tadano president Koichi Tadano unveiled the first

crane off the new production line. Tadano loader cranes are all straight telescopic models and mostly sold on the domestic market.

The new plant is part of a major re-organisation and investment by Tadano that sees all construction/mobile crane production centred on the company's Shido plant and aerial work platforms at its Takamatsu facility. The overall aim of these changes is to boost mobile crane production by 50 percent.



Tadano's new loader crane plant in Tadotsu (red) the Shikoku Kiko plant is in blue

The price is right

Hertfordshire based JV Price has taken delivery of a 28 metre GSR Skyking E228TJ, the recently launched truck mounted lift on a 7.5 tonne Iveco chassis. The new unit joins a 37 metre Bronto truck mounted lift delivered earlier this year.

The company says that the outreach of almost 18 metres, extra warning beacons for working on the highway and at night, and one side jacking for narrow roads were the key points that led them to buying the GSR. This unit has also been specified with built in pressure washer hoses to avoid trailing wires and hoses. The new units were purchased through Panther Platform Rentals.

The new E228TJ went straight to work cleaning cladding at Guildford Business Park.



c&a

news



Employees at the Potain plant in Charlieu, France celebrate the 1,000th GTMR 386, originally launched in 1989

Top of the pops

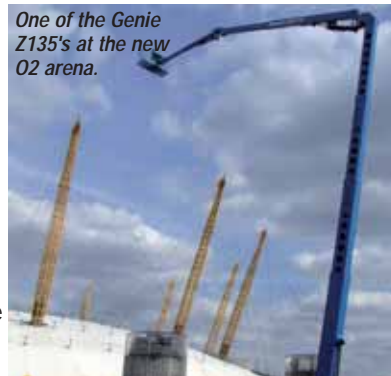
Potain has shipped the 1,000th GTMR 386 self erecting tower crane making it one of the most popular Potain self erectors ever. The 1,000th crane was delivered to French contractor Sogea Construction.

What a week

Working At Height, a local Genie dealer sold two 135ft Genie Z135's in a week. The first went to the UK's largest news print paper manufacturer and the second to the new O2 Arena (formerly the Millennium Dome). Marketing manager Paul Whittle was understandably delighted: "Selling one giant boom to an end user in the UK is a rarity, to sell two in a week is a first and probably a last in the UK."

The O2 Arena also took delivery of a Genie AWP, GR-20 Runabout, GS-2632 and Z45/25J boom lift, to help maintain the 24,000 seat London venue and give access to the rigging in the main arena.

One of the Genie Z135's at the new O2 arena.



Now Genie® is within your reach

When you need to go up in the world, Genie has the machine for you.

Genie machines are built to provide a superb level of reliability and safety when you're working at height. And their exceptional performance means that they're strong enough to manage even the toughest jobs.

With a range that includes the highly manoeuvrable personnel and material lifts to the rugged telehandlers and articulating and telescoping booms with lifting heights of up to 43 metres there's sure to be one that suits you.

To find out more, contact our local team.

Tel: 01476 584333



Copyright © 2007 Genie Industries, Inc. All rights reserved.

Genie
A TEREX COMPANY



www.genieindustries.com
Email: infoeurope@genieind.com

Ready for action

Whatever you're planning, we're there for you.



Compact and exceptional variable

Terex® Demag AC 100/4: most powerful four-axle, 100 tonne crane, with a vehicle width of only 2.55 m.

What makes the Terex® Demag AC100/4 so valuable for you:

- It is the first and only crane in its class with a vehicle width of only 2.55 m, even with large size 16.00R25 tires.
- Newly designed 50 m main boom with only four internal sections, providing excellent lifting capacity and fastest telescoping times.
- It is the only 100 t crane with the dimensions of a 70 t four axle crane.
- Unique in its class - four different outrigger bases as standard.



Terex-Demag GmbH & Co. KG · Zweibruecken, Germany · 00 49 (0) 63 32 / 830 · www.terex-demag.com · info@terex-demag.com

© Terex Corporation 2007 - Terex is a registered trademark of Terex Corporation in the United States of America and many other countries

- **JCB** is investing £36 million to double the capacity at its Ballabgarh factory in Indian.

- **David Baxter** will take up a new post of director of marketing for **JLG's** aftermarket business. **Malcolm Early**, JLG's European marketing director, is moving to Volvo excavators.



David Baxter

- Finnish based rental company **Cramo** has reported first half sales up 24% while profits have leapt by over 70%.

- Sales at **Tat Hong**, the Singapore based crane sales and rental company are up 28%.

- Finland-based rental group, **Ramirent** has increased first half revenues by 30% while profits were up an impressive 55%.

- Aberdeen-based **Energy Cranes International** has bought the intellectual property of the former **Bucyrus Erie** making it sole worldwide supplier of OEM parts and support for Bucyrus Erie offshore cranes.

- **Demag Cranes** has appointed **Achim Kettlack** as its new head of global purchasing and has seen earnings increase 8% in its first three quarters.

- **Bobcat** - recently bought by Doosan - saw revenues drop 9% in the second quarter. It has also opened a new, subcontracted, European Logistics Centre in Belgium.

- **RSC Corp** has reported overall revenues up by over 6% with rental revenues up 14% for the first six months.

- **SGB** parent **Harsco** has reported a 36% increase in its access revenues with profits up by 58%.

- **Omega lift** and **HTN** have moved into its new premises in De Lier, Holland

- Swedish industrial company **Lifco AB** has bought German-based **Kinshofer GmbH**.

- **Elliot Equipment Company** has launched two 26 ton BoomTrucks primarily for the USA market.

- **JLG** has donated a further \$500,000 to the Fulton County Medical Center in McConnellsburg.

- **A J Access Platforms** has appointed **John Swift** to its board of directors.



John Swift

- **Jim Roest** of **Riwal** is moving to Brazil to establish a new Brazilian sales and rental operation for the company.

- The acquisition of **CVS Ferrari** by **Cargotec/Kalmar** has been stopped by the German anti-competition authorities.

- An 800 tonne ship-building crane undergoing repairs in **Kobe** collapsed killing three and injuring a further four.

- A 100 ft dock crane on the banks of the **Tyne** collapsed following an electrical fire

- The '**Tai Sun**' gantry crane being built at the Yantai Raffles Shipyard in China which can lift 20,000 tonnes claims to be world's largest.

- **Layher UK** has significantly expanded its Letchworth premises and inventory.

- Hewden has appointed **Stephen Cormack** as the company's head of strategic accounts.

- Two men in **Kentucky** were crushed while removing a lattice crane boom section.

- **Rise Hire**, the UK van mounted rental company acquired by **Lavendon** earlier this year has signed a rental accord with Versalift

- An investigation has been launched into a fatal lifting accident aboard **Saipem 7000**, the world's largest offshore crane.

- **Transport for London** aims to cut the London congestion charge for Euro 5 vans and trucks.

- The heirs of **John and Cora Grove** have appealed a court decision that dismissed their legal action contesting Cora Groves' will.

- **Martin Verzijl** has retired as general manager of Sarens Netherland. He is replaced by **Rutger Kouwenhoven**.

- The Aerial lift division of **Terex** has appointed **Linda Meyer** as vice president and general manager, global marketing and product management.



Linda Meyer

- Four employees who suffered after the collapse of **Lampson's Big Blue** in 1999 have reached an out of court settlement.

- Acquisitive Spanish rental company **Euroloc** has purchased Spanish access rental company **Umesa**.

- **Kranlyft UK** is to extend the standard warranty it offers on Maeda mini cranes to 24 months.

- **The Platform Company** recently supplied a NiftyLift HR21 to the BBC for the filming of a documentary on the floods in the city of Hull.

- **Lasse Sunnergren** of Zip Up Svenska has hung up his harness and retired.

- Romsey-based **SHB Hire** has ordered 30 Hiab cranes for its fleet.

- American telehandler manufacturer **Gehl** saw overall revenues decline in the first half but margins and market share improved.

- A 60 metre boom on the Manitowoc M1200R aboard **Jumping Jack** the floating jack-up crane came crashing down last month.

- UK's **Speedy Hire** has acquired Waterford Hire Services in Ireland.

- A new **heavy lift record** was set last month when a 450 tonne loading buoy was lifted from ship to shore in Invergordon.

- A 100 year old **Titan** crane on Clydebank, supposedly the oldest of its kind in the world, is now open to the public after a £3 million restoration.

- **Manitowoc** has announced a two for one stock split.

- **Maxim Crane Works** has announced that 3.9 million shares were tendered in its Dutch auction to buy back 2.5 million shares.

- **Finning UK** has appointed **Annette Gann** as UK group communications manager and **Christine Hardy** as UK training and development manager, both worked previously with Hewden.

- **Sevcon** the manufacturer of electric motor control systems has reported sales up 13%.

- The driver of an underbridge inspection platform employed by **ES Platforms** has been charged with endangering public safety following an incident involving a train in February.

- The ex **Liebherr** employee arrested on suspicion of embezzlement in May, has been released on bail.

- **Raman Joshi**, global product manager for Manitowoc crawler cranes, has been promoted to director of marketing for the Asia-Pacific region.

- **Elavation** is expanding and has moved into new premises in Milton Keynes. It has also placed an order for 24 Nifty HR21 boom lifts.

- **John Berry**, UK sales manager with Allen and Grove died in July.

- **Jonathan Hull** has been appointed as sales director for AJ Access.



Jonathan Hull

- Swindon-based **Hi-Reach Access** has ordered over 100 UpRight aerial lifts for its new depot in North East England.

- **JCB** has donated a Loadall 540/140 telehandler to the Black Country Living Museum.

- **TVH** has added hydraulic generators, built by UK Generators, to its aerial platform catalogue.

- **Planet Platforms** of West Yorkshire has added five Volkswagen transporter vans to its fleet.

- The inquest into the death of **Mark Thornton**, the man who died when a mobile crane collapsed in Liverpool in March, has been postponed until October.

- **Zhenhua Port Machinery** has won a \$200 (£100) million deal from Dubai Ports World.

- **JLG** is planning a new European parts distribution centre at Maasmechelen in Belgium.

See www.vertikal.net news archive for full versions of all these stories