



The crane appears to have failed at or close to its foundation

Another Liverpool crane collapse

A luffing jib tower crane collapsed onto a block of flats in Chandler's Wharf, Liverpool, on July 6th. Although the crane's five tonne counterweight dropped from roof to basement, only the crane operator was injured and is reportedly in a stable condition.



The jib was thrown over the back of the crane.

The crane - a Wolffkran 500B rented from HTC - was said to be lifting 'well within its design capacity' at the time of the accident at the £28 million Bowmer & Kirkland canal-side hotel and apartment complex.

Two loud 'bangs' were heard from, or close to, its base/foundation before the crane fell backwards onto the adjacent apartment building. The jib went over the back of the crane and penetrated the roof. Residents were safely evacuated, with half having now returned following the removal of the crane. Ainscough Crane Hire used a Demag AC700, a Liebherr LTM1500-8.1 and a Liebherr MK100 self erecting mobile tower crane to recover the fallen tower crane after it was cut into three pieces.

A Wolff 7031 saddle jib was also on site and was given a clean bill of health after an inspection following the accident. Bowmer & Kirkland said that it operates its tower cranes in accordance with the 'Safe Crane Campaign' Codes of Practice and that the fallen crane was given a full safety audit following its erection on April 21st 2009.

Tower crane register?

The HSE has launched a consultation process for its proposed UK National Tower Cranes Register which could oblige all tower crane owners to register every crane each time it is erected. Information needed would include:

- The name and address of the crane owners
- Details of the employer for whom the examination was made
- The site address
- Details of any defects detected that might pose a risk of serious injury
- Details needed to identify the crane
- The date of its thorough examination

Crane owners will be required to pay £20 each time they register, in order to fund the scheme.

A full copy of the proposal and a link to comment are all on www.vertikal.net

Q-Plant takes six

Manchester-based rental company, Q-Plant Hire has ordered six more Kobelco crawler cranes for its fleet with a combined value of £2.5 million.

The new cranes include four 80 tonne CKE800s, a 110 tonne CKE1100 - the first in the UK - and a 135 tonne CKE1350.

Anthony Quinn, managing director said: "In spite of the downturn, there are still a number of key projects, particularly in the utilities, power generation and major infrastructure sectors which are essential to the economy and which have to go ahead. Most of these projects need professional, efficient lifting services,



Q-Plant's new 135 tonne Kobelco CKE1350 at the Abbey Mills pumping station in East London.

and the modern hydraulic crawler crane fits many of them perfectly. They offer ease of assembly and operation, an excellent range of lifting duties with flexibility and precision, and are extremely cost-effective in operation."

Haulotte takes Access Rentals

Haulotte finalised its purchase in June of UK rental company Access Rentals from the administrator. The deal includes all permanent staff under their current terms and conditions of employment. Haulotte says that the company will continue to trade under its existing name and the business will be run as a separate entity within the Haulotte Group. Access Rentals operates from nine locations with 70 staff and a fleet of more than 1,000 lifts.

Dinolift launches spider

Finnish-based manufacturer Dinolift has unveiled its first tracked spider lift - the 18.5 metre Dino 185XTC.

The new lift has an outreach of up to 10.9 metres with 80kg in the platform - maximum capacity is 215kg. Travel width is 1.15 metres while its operating footprint is just less than 3.5 metres wide. Total weight is just 3,000kg for the diesel model - electric power is optional - which provides 43 percent gradeability. Features include 360 degrees continuous slew and the 1,300mm x 700mm basket not only offers 180 degrees of rotation but can be tilted while rotated to fall within the machine's retracted width.

The 185XTC uses the heavy duty XT dual parallelogram linkage from the company's wheeled self propelled models, while the spider outriggers are capable of lifting the machine up to a metre off the ground, for excellent levelling capability on slopes or rough ground, while also allowing it to self load onto a flat bed truck.

The new Dinolift 185XTC



EPL enters administration

One of the longest established powered access rental companies in Europe, EPL, has appointed an administrator. The Sandy, Bedfordshire-based company specialises in vehicle mounted lifts, but also runs a number of self propelled lifts in its fleet of 454 machines.

The company was the subject of a management buy out from its previous owners, Laing, and has operated in its current form since 2001.

EPL had revenues of £8.1 million last year and employs 105 across seven further locations, Bristol, Birmingham, Carlisle, Enfield, Falkirk, Manchester and Winchester. Administrator KPMG is looking at several options including restructuring its debt and/or selling the business as a going concern.

New premises for Manitowoc UK

Senior Manitowoc Crane managers including president, Eric Etchart, attended Manitowoc UK's open-day to officially open its new premises at Gawcott near Buckingham and demonstrate its latest products.

The stars of the show were the GCK 3045 City crane, the TMC540 commercially mounted truck crane and the new Crane Star system. The facility boasts 1,700 square metres of workshops and parts

warehouse, 600 square metres of offices and a substantial yard. In addition to preparing new and used cranes for delivery, it also offers rebuilds and refurbishments.

The new premises replace four UK locations - the Potain facility in Cowley, Grove offices in Sunderland, a warehouse in Washington, Tyne and Wear and a rebuild operation in Manchester.

..and amends debt

Manitowoc has successfully negotiated an amendment to its credit agreement. The amended \$2.63 billion senior credit facility includes revised covenant ratios through the remaining life of the agreement.

Glen Tellock, Manitowoc's chief executive said: "Our amendment was not driven by liquidity issues,

but rather due to the financial ratio impact of lower sales volumes and reduced profitability during these challenging economic times. The new agreement not only gives us the flexibility to manage our businesses during this downturn, but also enables us to strongly position the company to take full advantage of the next upturn."



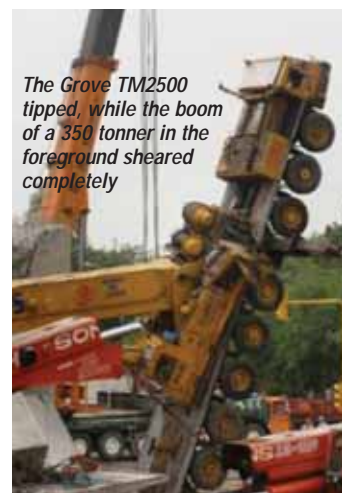
Inside Manitowoc UK's new facility

Three cranes go down in India

Three big cranes - two 250 tonners and a 350 tonner - collapsed during a four crane tandem lift in New Delhi in mid July.

Four cranes, the three above and a 400 tonner, were attempting to lift the main beam of a launcher crane that had collapsed the day before killing six people and injuring 13. As soon as the full weight of the beam was taken by the four cranes the boom of the first crane in the line up, a 250 tonner, literally 'snapped', passing a greater share of the load onto the next crane a 350 tonne Krupp whose boom also completely sheared off. The next crane along, a 250 tonne Grove TM2500 tipped throwing its counterweight slabs to the ground. The fourth crane, the 400 tonner remained upright as its

end of the beam had only lifted half a metre or so when the accident occurred. See video footage on www.vertical.net



The Grove TM2500 tipped, while the boom of a 350 tonner in the foreground sheared completely

The sun shines on Vertikal Days

Excellent weather attracted record numbers of visitors to Vertikal Days at Haydock Park. Now in its third year, visitor attendance was up more than 11 percent, with over 130 crane, access and telehandler and associated equipment brands represented. Most reported good enquiry levels and show orders. (See Vertikal Days review on page 47.)

A charity auction at the evening event raised almost £7,000 and included a pink eazzilift mini scissor lift donated by R2 Access and Eazzi Lift. Other items auctioned included two crane models from Liebherr and two PPE kits from Kingfisher Access. Martin Davies of MEC, Thermoil and EPW, did an outstanding job as auctioneer selling one of the models three times to raise £475.

A Kingfisher PPE/harness kit raised £210 with Higher Concept Software clearly looking to get more hands-on with the equipment. Finally it came down to the Pink scissor with Dave Williams of Platform Hire making the winning bid at £2,800. However, as the machine was 'knocked down', Tony Crawford of Mr Plant Hire got approval to bid £3,000. A quick conference with R2 and eazzilift obtained an agreement to add a second unit to the auction.



Dave Williams (L) of Platform Hire and Tony Crawford of Mr Plant Hire.

Bluelift appoints Bravi

Italian spider lift manufacturer Bluelift has appointed Leeds-based Bravi UK as its UK distributor, trading as Bluelift UK. The two companies have signed a five year agreement covering the complete range of Bluelift spider lifts.

The Bravi UK team has been expanded to cope with the additional products, which also include EddieLift push around lifts, including the new two man, 300kg capacity, 1.65 metre platform height push-around scissor the EddieLift Phat. Weighing just 260 kg the unit has an 800mm x 1,000mm platform with dual entry gates.



(L-R) Stuart Honeywood and Andrew Fishburn of Bravi UK with Paolo, Gianni, Roberto and Gianpiero Marti of Bluelift.

PC Harrington hit for £175,000

PC Harrington Contractors has been fined £175,000 at the Old Bailey, for the fatal accident at Wembley Stadium five years ago in which a crane dislodged a scaffold platform which then fell onto the men below.

PC Harrington - part of the Harrington group that owns HTC tower cranes and hoists - pleaded guilty to a breach of Section 2 (1) of the Health and Safety at Work etc Act 1974 and was fined £150,000 plus costs of £25,203.



Ainscough keeps buying

Ainscough Crane Hire - the UK's largest crane rental company - has ordered 20 Liebherr LTM1150-6.1, 150 tonne All Terrain cranes the first in the UK was shown at Vertikal Days. The purchase comes on top of the company's recent expansion into the heavy lift crawler crane market. Eight of the new cranes will be delivered this year, with the remainder to follow in 2010.

The six axle LTM1150-6.1 is one of Liebherr's 'all-in-one' cranes featuring a 66 metre main boom and the ability to carry a good part of its counterweight on board.

Neil Partridge, managing director of Ainscough said: "While demand for lower capacity mobile cranes is particularly depressed, the requirement for larger mobile and heavy crawler cranes is buoyant and we are shifting our fleet emphasis accordingly."

Oktopus appoints administrator

Bromsgrove-based Oktopus UK - distributor for Klaas trailer and aluminium cranes and Oktopus suction lifting equipment - which went into administration last month has been purchased by previous owner and director Richard Gould through a newly formed company Oktopus Plant Hire.

The administrator says he was unable to continue to trade the business and that several interested parties who had previously been in negotiations to buy the business showed no interest when contacted. He added that: "Gould provided substantial personal guarantees to creditors and is seeking to mitigate his liability by continuing the business."

Gould paid £30,000 for the business and assets, payable in three monthly instalments of £8,000, with a final payment of £6,000. The administrator will retain title to the assets until the final payment is received.

Tadano unveils robocrane

Tadano unveiled a dual-armed, quadrupedal robotic crane - Rototops - at the 60 year anniversary celebration for the Robotops company. The idea for the crane was first mooted two years ago and it took a year to develop the finished machine in conjunction with Okayama University. Tadano said the next step is to commercialise the technology.

The device features dual treads, four legs and two arms. The appendages are designed with 29

movement joints (six for the hand and arm, two for the shoulder, 12 for the feet) in its body, allowing it to walk and carry a load at the same time. Each hand has a 100kg capacity. The remote controlled crane, which measures 2.1 by 3.84 by 2.1 metres and weighs 2,700 kg, was designed for operation in hazardous environments and incorporates three cameras (one in each arm and one in the centre of the body) to monitor its movements.

Access Link teams up with Partner Lift

Access Link, the UK/Ireland association of independent aerial lift rental companies which work together to provide national coverage, has reached a partnering agreement with Partner Lift the German-based group of independent access rental companies that work together in a similar way.

Discussions have been taking place for more than a year and the agreement was finalised and ratified after Oliwer Sven Dahms of Partner Lift addressed members of the Access Link at their meeting at Vertikal Days.

Access Link members operate a fleet of around 4,600 units from 29 depots throughout the UK and Ireland, while Partner lift members have a total of 7,500 platforms available from 135 depots in three countries.

Access Link chairman Malcolm Bowers who is also a joint owner of Lifterz said: "We are seeing an increasing number of contractors working throughout Europe and this alliance will allow both Partner lift and Access Link members to offer their customers a better geographical coverage."



Oliwer Sven Dahms of Partner Lift (L) and Brian Light of Light Hire together with other Access Link members at Vertikal Days

Riwal on the march

Dutch-based international access specialist Riwal has acquired, Badhoevdorp (Amsterdam) based Instant Holland Group. The acquired business comprises Instant Holland - powered access equipment rental, Instant Steigers - scaffold sales and rental, Stammis Verhuur - power generators and construction equipment rental and Ti-Rent - Construction equipment rental with operators.

The Group operates from four main locations, two in the Amsterdam area, one near Den Bosch and one in Heerhugowaard. Its powered access rental fleet includes 845 aerial work platforms and 29 telehandlers, most of which are JLG and supplied by Riwal. The company has 170 employees and was owned and managed by Allard May who, we understand, will remain with the business.



Designed for operation in hazardous environments, Robotops can walk and carry a load at the same time

Mammoet to launch PTC120DS

Dutch-based heavy lifting company Mammoet has released plans for a new 100,000 tonne/metre plus version of its Platform ringer Twin boom Containerised (PTC) crane - the PTC-120DS.

Still at the design stage, the massive crane - which has a 45 metre diameter footprint - is said to be able to lift 3,000 tonnes to 48 metres, 2,000 tonnes to 53 metres and 1,000 tonnes to almost 100 metres radius. The main boom measures up to 130 metres while a 43 metre jib will also be available.

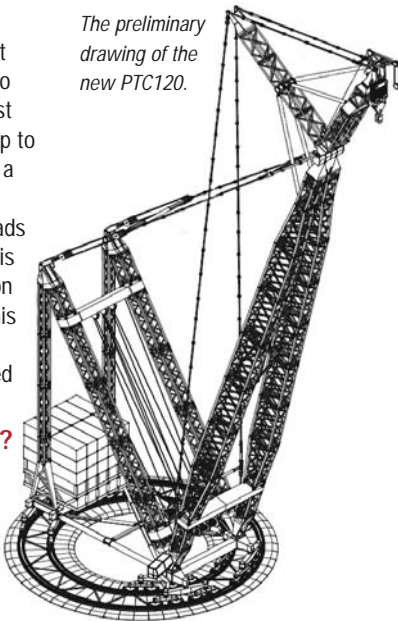
The PTC is designed to regular mobile crane standards with regular winches and 360 degree slewing. Mammoet's own MSG 'cranes' use strand jacks for heavier loads, which are considerably slower. The hoist speeds on the PTC120 are two metres a minute for the largest winch which can cope with up to 3,200 tonnes and five metres a minute on the smaller 'runner' hoist which can cope with loads of up to 250 tonnes. Slewing is via rollers with one full rotation taking 30 minutes - fast for this size of lifting machine. The PTC120 can also be rigged to run on straight tracks.

How does it compare?

The new crane substantially outperforms Mammoet's own current PTC and MSG heavy lift machines and goes head

to head with the SK heavy lift machines produced by ALE, which are equipped with up to 1,000 tonnes more counterweight. A direct chart comparison is not possible as the ALE machine does not have a traditional slew ring, and uses outreach - the distance from the heel pin of the boom - rather than radius in its load chart figures. Using outreach therefore here is how the two stack up with four big loads.

The preliminary drawing of the new PTC120.



Radius metres	Outreach metres	Mammoet PTC120*	ALE SK90	ALE SK120*
48	27.5	3000	3152	4518
54	33.5	2000	2793	3750
98	77.5	1000	1005	1682
122	101.5	500	573	1079

*Not yet built



The new Liebherr LTR 11200

Liebherr Ehingen celebrates 40 years

Liebherr celebrated 40 years of manufacturing cranes at its Ehingen mobile crane plant with several spectacular customer days in mid June, showing off its new facilities and new crane models.

About 2,500 customers and guests from all over the world enjoyed the hospitality and guided tour of the plant which produces around 40 percent of the world's All Terrain cranes - about 1,750 a year.

Several new cranes were unveiled including the 1,200 tonne LTR 11200 telescopic crawler and the 60 tonne LTF 1060 truck crane on a commercial truck chassis, which completes its LTF product line-up. This superstructure will also be used on the new 60 tonne capacity LTR 1060 telescopic boom crawler crane - joining the 100 tonne LTR 1100 introduced four years ago.

The LTR 11200, the world's largest telescopic crawler, combines the boom from the LTM11200-9.1 and the narrow track crawler chassis from the LR1350-1 making it ideal for work on wind-power projects.

Brief details were also given on two further cranes to be launched at Bauma next year at the earliest, the 45 tonne, three axle, conventional

drive LTC 1045-3.1 city crane and the company's largest crane to date - the 3,000 tonne LR 13000 crawler crane. Liebherr says that this will be a 'conventional' crane capable of moving on site with all of its counterweight. In other words similar to its other big crawler cranes - just bigger. The crane will use 25 tonne slabs that fit into 20 foot containers for transport to make up its maximum 1,850 tonnes of ballast.

More information and pictures from the 40th anniversary celebrations - including how to track the LTR 11200 over a six metre wide void - visit www.Vertikal.Net



The LTF 1060 truck crane

Specialist IT solutions for the rental industry

"We could not have achieved this
growth
without inspHire"



Jonathan Till, Managing Director - GT Access

"inspHire has given us access to a vast amount of business information that we can use to analyse how the business is performing and use it to forecast in these challenging times"

Whatever the size of your business, inspHire provide hire management software solutions that will deliver proven results. Contact us today and become inspHired.

0800 634 0600
sales@inspHire.com
www.inspHire.com



Feeling Overweight?



Lighten the load with the UpRight AB38

- Best-in-class 13m working height & 6.5m outreach
- Lightweight with standard non-marking tyres
- Powerful, direct electric drive for excellent battery life

the **UpRight** alternative

www.upright.com

All-electric utility truck



The SEV/Altec joint venture all electric lift.

Smith Electric Vehicles (SEV) of Kansas City, has teamed up with Altec to offer America's first all-electric utility truck and aerial lift. Unveiled at the Electric Utility Fleet Managers Conference in Williamsburg, Virginia, the truck is a battery powered Smith Newton 7.5 tonne truck produced by SEV in partnership with Tanfield's SEV UK, while the work platform - an insulated Altec AT37-G articulated telescopic boom - has a working height of 37.8 ft (11.5m) and an outreach of 28.3ft (8.5m).

Pacific Gas and Electric (PG&E), one of the largest utilities in the USA, will play a critical role in the development of the vehicle. The first test unit will be added to PG&E's for routine and emergency overhead line work in its northern/central California service area. The truck has a range of around 100 miles at speeds of up to 50mph.

Broderson moves into UK



The Broderson IC80 has arrived in the UK.

Broderson, the Lenexa, Kansas-based pick and carry crane specialist, has appointed South-Yorkshire based Cranes UK to distribute and support its products in the UK and Ireland.

Broderson's eight tonne IC80 is expected to be one of the most popular models in the UK, offering more than five tonnes pick & carry capacity, a maximum tip height of up to 14 metres, 360 degree slew, four wheel steer and optional four wheel drive. Broderson has been building pick & carry cranes for almost 40 years and has a range of eight models from the two tonne capacity IC20 to the 13.6 tonne IC300.

CMC unveils new 21m

Italian vehicle mounted platform manufacturer CMC unveiled its new 21 metre straight telescopic 3.5 tonne truck mounted lift, the PLA212 at an open-day to show off its recently upgraded facility in Bari Modugno.

CMC says that the compact outrigger base, 12 metre outreach PLA212 is a result of closer working co-operation between its engineering and sales teams, with feedback from its distributors and users.



The new CMC PLA212 telescopic

CMC has been actively expanding its product range, production capacity and market coverage through the appointment of new international distributors in order to cope with the current economy. The first PLA212 has been sold to local customer, Mariano Light in Maglie.

Big Genies



Five of the Easi Uplifts new Genie booms

Irish-based Easi Uplifts has placed an order with Genie that includes 10, 135ft Z135/70 self propelled articulated boom lifts.

With the UK economy showing signs of improvement, the international rental company has opened its fifth UK depot in London and is continuing to build on its strategy of offering larger specialised equipment for both rental and re-hire.

Blade continues to grow



Blade Access' new CTE Z21J

Fast growing Yorkshire-based truck mounted aerial lift rental company Blade Access has added a 70 metre Wumag WT700 to its fleet, its biggest lift yet. The new lift was handed over at Vertikal Days and follows quickly on the heels of a 45 metre Wumag WT450, and a 53 metre WT530 delivered at the end of May.

The company - which began as a window cleaning specialist - has also recently moved into new premises in Bradford and is building its vehicle mounted lift business at a rapid pace, also taking delivery of the first of a number of CTE Z21J platforms for its self-drive and cross-hire business. Watch out for even larger new Wumag platforms joining the Blade fleet in the months ahead...

Loxam lift found

The second truck mounted platform stolen from Loxam's Pontefract branch in April - a 2007 34 metre Bronto S34MDT on an Iveco chassis - has been found.

Loxam offered a £1,000 reward for help in recovering the platform. The first stolen truck recovered at the end of May was a 22 metre GSR/Skyking 198PX mounted on a Nissan Cabstar chassis.

Megastars for Hi-Reach

UK-based aerial lift rental company Hi-Reach has taken delivery of its fourth big Holland Lift scissor this year.

The platform - a 34 metre working height, Rough Terrain Megastar G-320 - went straight to work on the Media City project at Salford Quays in Manchester. The order included two, 22 metre and two, 34 metre Megastars. The G-320 features a 9.66 metre extended platform, 1,000 kg lift capacity and 35 percent gradeability.



The three metre deck extension creates a 9.66m long platform

Vehicle mounted access
Market Leader
New Build / Service / Training
New LVI option

1 Altendiez Way, Latimer Park,
Burton Latimer, Northants. NN15 5YT
t:01536 721010 f:01536 721111
e:sales@versalift.co.uk

APPROVED
IPAF
TRAINING
CENTRE

www.versalift.co.uk

TROJAN DEEP-CYCLE GEL™

The Power of Maroon...
The Convenience of Maintenance Free

- Long lasting runtime and battery life - cycles longer and deeper than AGM
- Sealed construction - no risk of acid leaks or spills
- Never needs watering - completely maintenance free
- Ideal for use in Health and Safety-critical environments. Endorsements include: Schools, hospitals, airports and office buildings

TROJAN DEEP-CYCLE GEL™ BATTERY USAGE GUIDELINES

- Nonspillable certified (UN2800) - safe for air, land and sea transportation
- No watering required (do not attempt to open vents)
- Always use a voltage regulated temperature compensated charger

Trojan BATTERY COMPANY

For more information contact Trojan Power Systems at 144 St. Hill Road, Troy, NY 12182 or visit the Trojan website www.trojanbattery.com

Gehl agrees credit amendment

Gehl, the US affiliate of Manitou, has agreed an amendment to the terms of its credit lines with its lenders, providing a total commitment of \$105 million for a 24 month term.

The agreement includes two separate facilities: a revolving credit line of \$80 million based on the company's North American inventories and receivables and a term loan of \$25 million payable in quarterly instalments. As part of the agreement, Gehl has granted its lenders security over its North American assets. The new loans replace an earlier, \$125 million unsecured credit line and addresses all matters that gave rise to the Forbearance Agreement the company entered into with its US banks in April.



GEHL



Port Services' TC2800 finally goes to work in its home market.

TC2800 at work in Scotland

The 1,000 tonne Terex Demag TC2800 owned by Port Services of Scotland has finally gone to work in the UK. The new crane, delivered at the end of last year, has been busy in Ireland lifting 300 tonne umbilical reels for an offshore oil company as well as placing two motorway bridges and working in a refinery in Cork. The crane has gone to work in Invergordon on an oil rig upgrade project.

The TC2800 was initially rigged with a 48 metre main boom, 54 luffing jib and 160 tonnes of superstructure counterweight. A suspended counterweight of 100 tonnes will be added for some later lifts.

Allan files again

Allan Access Hire, the company that took over from Allan Access after it went into administration last September has appointed an administrator after a winding up petition was filed by the UK Inland Revenue - HMRC. In a statement issued by Allan Access - see letters page - it said the decision had been forced on it by the HMRC. Allan Access Hire was working on new working capital facilities via the Government's Loan Guarantee Scheme which had been provisionally agreed.

Liebherr cranes up over 12%

Liebherr, has reported an 11 percent increase in group revenues for 2008 to a record €8.4 billion (\$11.8 billion). Its three crane divisions, mobile, tower and maritime cranes posted a combined increase of more than 12 percent. The greatest growth was reported by the company's mobile crane business - Liebherr Ehingen - which reported revenues of over €1.9 billion (\$2.67 billion), an increase of 14.2 percent.

(See *Vertikal.Net* for full report)

Your experienced partner in...
...equipment parts.



PSE MEWP PARTS DIVISION

- A provider of exact OEM replacement parts for scissor and boom lifts.
- Highly experienced customer service staff.
- Parts are shipped the same day ordered with no extra charge.
- No hassle with returns.
- Competitive pricing.

GENIE
HAULOTTE
HOLLAND LIFT
JLG
MEC

NIFTYLIFT
SKYJACK
SNORKEL
UPRIGHT
AND MORE...

PlatformSales
EUROPE

PlatformSales Europe • Maxwellstraat 50 • 3316 GP Dordrecht • The Netherlands
T. +31 78 65 217 65 • F. +31 78 65 217 60 • E. sales@platformsaleseurope.com • I. www.platformsaleseurope.com

The sculptor's telehandler

A brand new JCB Loadall 535-95 telehandler with an extra large platform, is helping to lift people onto the empty Fourth Plinth of Trafalgar Square to take part in 'One and Other', a 'living statue' work of art created by Anthony Gormley.

Over a period of 100 days, a total of 2,400 people from across the UK will individually occupy the empty plinth for an hour throughout the day and night, being lifted onto the six metre high plinth by the telehandler.

First person up was housewife Rachel Wardell from Lincolnshire

who used her 'hour' to raise awareness of the National Society for Protection of Cruelty to Children, which by coincidence, is JCB's nominated charity.

Gormley's 'One and Other' has so far attracted more than 15,000 applications from across the UK from people wanting to participate. All 2,400 participants are chosen randomly by computer and can do anything they want as long as it is legal. Registration via the website www.oneandother.co.uk is open until 1st September.



The telehandler is being used to lift successful applicants onto the fourth plinth

Sarens buys Rigging International

Belgium-based heavy lift company, Sarens has acquired 100 percent of California-based Rigging International, as 'a strategic alliance'. Rigging International will continue to operate under its present name and with its current management team.

Sarens says that the 'alliance' will provide it with an entry into the US market and gain greater international coverage, while 'Rigging International's position is similarly strengthened domestically and worldwide'. A statement said: "Despite the worldwide economic recession the Sarens Group made this move to establish itself as a premier league player on the North American heavy lift market."

Link Belt expands crane plant

Link-Belt has completed a new assembly bay at its facility in Lexington, Kentucky. The new bay will increase manufacturing and production capacity for large rough terrain, truck and telescopic crawler cranes and will also include the upgrade and redesign of existing production areas to house more machining and welding equipment.

Jim Forshee, vice president of manufacturing at Link Belt said: "We have carefully discussed the pros and cons of expanding in these economic times and have decided this expansion is necessary and critical to our long-term future success."



The Power Behind Performance



The 'Heads-up' winner.
Simply outperforming our competition in head to head tests over and over again...

We put more into our Deep Cycle Batteries

Thicker and Heavier plates, combined with heavy strap and inter-cell connections is the 'Crown' signature.

Manufactured to exact standards to deliver the longest runtime and battery life.

A full range of 6v, 8v and 12v deep cycle batteries available...



Made in the USA since 1939



← Battery Electrolyte Level Indicator




Nobody builds them like Crown...

SHIELD

Head Office
Bishops Cleeve: 01279 652 067
info@shieldbatteries.co.uk

Other Locations
Leicester: 0116 274 1400
Manchester: 0161 834 8589






Consider the possibilities...



Kranlyft UK Ltd
0117 982 6661
marketing@kranlyft.co.uk
www.maedacranes.com
Unit 1, IO Centre, Cabot Park, Avonmouth, BS11 0QL



■ Glass Handling ■ Cladding ■ Restricted Access ■ Rooftop Lifts ■ Maintenance Work
■ Timber Builds ■ Artwork Installations ■ Industrial Maintenance ■ Uneven Ground
■ Railways ■ Utilities ■ Access Work ■ Man Baskets ■ Steelwork

JCHI



**China's leading
access
manufacturer**

PARTNERS WANTED



 **Beijing Jingcheng Heavy Industry Co.,Ltd.**

Tel: 0086-10-61539210 - Fax: 0086-10-61539210

E-mail: sales@jchic.com



To know more about us, please visit:

www.jchic.com

- **Speedy Hire** of the UK has completed its nine for one rights issue, raising £100 million.

- **IPS**, the parts and service company, has signed a two year deal with **Lavendon** to supply replacement parts to its UK operations.

- **Bernd Grimm** and **Rolf Kulawik** have joined German-based aerial lift manufacturer **Ruthmann**.



Bernd Grimm

- **Snorkel** is asking owners of SR2770 compact RT scissor lifts built between 2000 and 2006 to inspect machines for cracks in the drive motor shafts.

- **Titan Plant Services** of New Zealand is looking for a private equity investor or merger partner.



Rolf Kulawik

- Bangkok-based **SB Siam** has been appointed as sole dealer for **Potain** tower cranes in Thailand.

- **Platform Sales & Hire** has sold six **Genie** self propelled aerials to **Ryanair** for its Stansted, UK, maintenance facility and five units to **Easy Jet** for its Luton and Liverpool operations.

- German aerial lift rental company **Schmidt Neu-Isenburg** has celebrated its 40th Anniversary.

- Italian-based truck mounted lift producer, **Isoli**, has appointed **Lifprofi** as its distributor in Germany.

- **Lavendon** has invested in a brand new fleet of support vehicles for its **Nationwide Platforms**, **Panther** and **Skylift** businesses.

- **Nürburgring**, The German Formula 1 track, has selected **Kramer** telehandlers for this years motor sport programme.

- UK-based aerial lift rental company, **Kimberly** has appointed **Jim Perry** as national sales and operations director.

- Milton Keynes-based aerial lift rental company, **Elavation**, has become the latest **Access Link** member to achieve **IPAF Rental+** status.



Giles Cancell of IPAF and Barry Brady of Elavation

- UK-based **AJ Access** has shipped a number of used aerial lifts to Azerbaijan, and provided on-site **IPAF** operator training.

- **Lift Inc** of Lancaster, Pennsylvania, has acquired **Bobcat** of Lancaster for an undisclosed sum.

- Aerial lift manufacturer **Leader** closed for two days in July, following the death of **Rosanna Borghi**, the **Ferrarini** family matriarch.

- **Terex AWP/Genie** has opened two new service training locations at its facilities in Oklahoma City and Southaven, Mississippi, USA.

- The CPA's **Powered Access Interest Group** is drawing up a best practice guide for the use of aerial lifts in confined overhead areas.

- Norwegian-based aerial lift specialist, **Hamar Liftcenter**, has purchased two **Matilsa Parma 21D** auto levelling self propelled boom lifts.

- **Maxim Crane Works** has acquired a third of **Barnhart Crane and Rigging's** crawler crane fleet.

- **RSC**, one of the USA's largest rental companies is to issue \$400 million of senior secured notes, to shore up its balance sheet and has promoted **Phil Hobson** to senior vice president western operations.

- **Manitowoc** has appointed **Eric Pommier** as vice president of **Manitowoc Crane Care** for Europe, Africa and the Middle East.



Eric Pommier

- UK-based **AJ Access** ordered one of the first **Hybrid HB1030CE** compact light weight scissor lifts at **Vertikal Days**.

- **TGM Wind Services**, of Abilene, Texas, has ordered two 90 metre **Bronto Skylift S90 HLA** truck mounted lifts.

- **Kennards Hire** of Australia has moved into Port Douglas, Queensland with the acquisition of **Coral Coast Hire**.

- **Alfred 'Al' Wyss** has come out of retirement to head up **Swiss crane and access company Stirmimann**, following the departure of MD **Loenzo Cassani**.

- **WD Bennett** subsidiary **Eurolift** was fined £50,000 for the fatal tower crane collapse in 2003.

- **Tanfield** has appointed **Jeremy Wooding OBE** as an independent non-executive director.

- **Ashtead**, owner of **Sunbelt** in the USA and **A-Plant** in the UK has issued its full year results and said that rental markets have stabilised.

- **Thermoil** the battery preserver and recovery solutions company has extended its distribution with the appointment of **Nifty Australia** and **Nifty South Africa**.

- The **Skylift** vehicle mounted lift division of **Lavendon UK**, will install **Masternaut Three X** vehicle tracking and management products in its fleet.

- **BLE**, the **Grove** and **Potain** self erecting tower crane distributor for Belgium, has added product support responsibility for **Potain** top slewing tower cranes.

- The second annual meeting of **IPAF** past presidents was held in Jurançon near Pau, France in mid June.



IPAF past presidents

- **Keith Kendall** the former owner of **Access Rentals** has established a new aerial lift rental company in the UK - **Direct Access Hire Ltd**.

- **Londonderry Garage** has won a contract to supply specially modified vehicles for the construction and maintenance of overhead power lines.

- **Edins Kranar**, of Järfälla, Sweden, has entered the spider crane market with an investment in three **Maeda** cranes.

- **Jim Goodall Rental & Sales** of Naples, Florida has moved into new premises in Fort Myers.

- The **American Rental Association (ARA)** has modified the dates of its convention and trade show for 2010 with fewer days,

- **New York's Department of Buildings** says it will share information about tower cranes in an effort to track equipment failures, manufacturers' recalls, and accidents.

- **GGR-Unic** has launched the all-new **EMU 1000** a one tonne glass handling machine.



EMU 1000

- **Ramsbottom, UK**, based narrow access platform hire specialist **Higher Access**, has purchased more tracked spider machines.

- **Easi UpLifts** is offering the **A66 Compact Crane** test at five locations across the UK and Ireland.

- **Hiab** is to supply hooklifts and loader cranes to the Finnish Defence Forces.

- **Palfinger** has acquired **Automated Waste Equipment** in the USA.

- **JLG** has won a contract from the United States Army to rebuild 500 'Atlas' telehandlers and 300 other rough terrain forklifts.

- **Martin Ainscough** has sold his majority stake in UK machinery removal and installation specialist **Ainscough-Vanguard** to his son **Matthew**.

- **PC Harrington Contractors** of the UK was fined £175,000, after an employee died and another was injured after a crane accident at **Wembley Stadium**.

- **UpRight** has opened a new operation in the Middle East with **Mick Wright**, heading up the operation from a base in Bahrain.

- **ThyssenKrupp Safway** has been awarded the first **Haulotte/Bil-Jax** Platinum Customer Award.

- **Leeuwarden, Holland**, based **Kielstra Kraanverhuur** has taken delivery of a new 220 tonne **Tadano Faun ATF220G-5 All Terrain** crane.

- Aerial lift manufacturer **UpRight** has appointed **Mark Hutchinson** as director of product support.



Mark Hutchinson

- **Elliott Equipment Company** has unveiled the **V60**, a new 60ft/18 metres straight telescopic, 'material handling' aerial work platform.

- **Acme Lift**, the US re-rent company has appointed **Bryan Rich** as chairman after he became a new equity partner.

- **Worldlift Industries** owner of **Denka Lift** and **Falck Schmidt** has consolidated its production at its Odense facility.

- **Linamar**, owner of aerial lift and telehandler manufacturer **Skyjack**, has retired \$80 million of its borrowings, five months before its due date.

- **Terex** completed its latest round of re-financing, raising around \$612 million.

- **Gottwald** has appointed **Clark Equipment Australia** as its distributor in the Australia and New Zealand region, following the retirement of **Graham Raneberg**.

- Australian crane company, **D&G Hoist&Crane Hire** is adopting the **CraneSafe** third party certification scheme, after having bought **Vertikon's** fleet in April.

- **All Crane Rental** (previously known as **All Erection**) of Columbus, Ohio, has received two safety awards from the Safety Council of Greater Columbus.

- **New Zealand-based** rental company, **Hirepool**, has appointed **Kingi Pikaahu** as national manager of the company's **Access** division.

- The export department of Dubai-based **Kanoo Machinery**, has sold 12 **Bobcat** telehandlers to **Pexi Gulf** for re-export.

- **Skyjack** has appointed **Surfwood Supply** as a VR Telehandler dealer in British Columbia, Canada.

- The Bradford depot of **Caledonian Access** the UK-based powered access service and certification company has become an **IPAF** training centre.

- **Michela Viviani** of truck mounted and spider lift manufacturer **Oil & Steel** has been promoted to director.



Michela Viviani

See www.vertikal.net news archive for full versions of all these stories