

Lavendon adds EPL

The Lavendon Group has purchased the 'assets and trade' of EPL, the UK-based powered access rental company from its administrators. The deal includes assets with a book value of around £6.6 million, the premises, customer lists and order book, while all 105 staff and directors transferring to Lavendon Access Services. The sum paid is £1.3 million plus outstanding debt/finance of £2.8 million and includes 320 aerial lifts of which around 250 are thought to be vehicle mounts.

The seven premises include one owned property in Birmingham which is included in the assets, while the other six locations will be transferred on licence, giving Lavendon three months to vacate or decide to retain and negotiate new contracts with the landlords. Lavendon says that it anticipates restructuring costs of around £500,000 to integrate the business, which it expects will be completed by the end of the year, resulting in annual savings of around £1.5 million. The successful bid was one of four following expressions of interest from around 60 potential investors.

EPL, which had revenues of £8.1 million and an operating profit of £500,000 in 2008 will be merged into Lavendon's Skylift business, possibly retaining the EPL name in the same way it merged the Platform Company name into Nationwide Access to create Nationwide Platforms.

Lavendon's chief executive, Kevin Appleton, said: "This acquisition strengthens our UK market position in vehicle-mounted access platforms. Through elimination of overlaps with our existing business, we anticipate a rapid return on our investment following completion of the integration programme."

Direct Access up and running

Direct Access Hire, the UK company formed by previous directors of Access Rentals - Adrian Chapman and Keith Kendall - following that company's administration and subsequent acquisition by Haulotte, has established its headquarters in Bradford, Yorkshire.

The company, which now operates from three locations, covering Yorkshire, Lancashire and the Midlands, has recently taken delivery of the first 13.5 metre platform height Holland lift Q-135EL24 heavy duty electric powered scissor lift to be delivered in the UK.

With a platform of more than six metres long, 2.30 metres wide and 750kg of unrestricted lift capacity, the new unit is expected to prove popular.



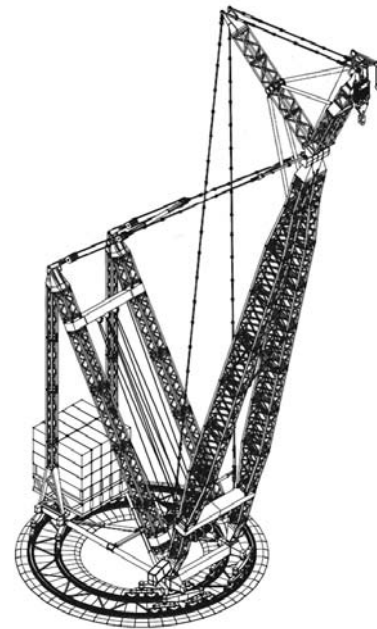
Alan Russon of Russon Access, hands over the UK's first Holland Lift Q-135EL24 to Adrian Chapman of Direct Access

Mammoet to build even larger PTC

Mammoet has announced that it has designed a larger, 160,000 tonne/metre version of its recently announced PTC120DS.

The larger PTC160DS, is almost identical to the PTC120 with the same boom and jib configurations, the same counterweight and same winches.

The difference will be the footprint - the PTC160DS will have a 54.5 metre diameter ring almost 10 metres larger than that used on the PTC120.



First City crane image

Liebherr has now released the first image of its new LTC 1045 3.1 City crane that it announced in June during its 40 year celebrations at its Ehingen plant. As well as showing off its expanded production capabilities it revealed brief details on two new cranes it hopes to show at Bauma next year. Largest was the 3,000 tonne LR 13000 crawler crane but scant details were also given on the new 45 tonne,

three axle, conventional drive LTC 1045-3.1 city crane. One unusual feature of the new crane is the dual position operators cab. Mounted on a short telescopic boom it can sit in the normal superstructure position when on site, and then telescope to the front of the chassis for road travel, providing the crane with the best combination of single cab city crane and dual cab



The first drawing of the new Liebherr LTC1045 3.1.

Imer buys Iteco

Italian-based aerial lift manufacturer Iteco has been acquired by Tuscany-based Imer Group. The transaction, which completed on August 1st, is asset and trade based and includes the company's order book, production facilities, inventory, name, telephone numbers and goodwill but not the debtor book or liabilities. Production will continue at Iteco's Pegognaga facility.

Imer recently dipped its toe in the access water with the launch of three new spider lift work platforms at Intermat, along with its first telehandler. Although it has not manufactured aerial lifts before, specialising instead on smaller construction equipment and a range

of hoists, its sales subsidiaries are already involved in the access markets. In the UK, Imer Direct handles Maber hoists, while in Spain Imer Iberica is the UpRight distributor.

Iteco, which largely builds self propelled scissor lifts, has introduced a completely new range of products over the past few years, with highly competitive features to go with its acknowledged quality levels. Sales volumes however have not increased as the company might have expected. Imer will of course hope to change this, although the company has yet to comment on what plans it may have for any changes to the Iteco distribution network.

GBK enters administration

GBK the Glasgow-based crane rental company has appointed an administrator via its major shareholder the Royal Bank of Scotland. Details have been kept relatively quiet although letters have been sent to creditors giving formal notice.

When founded from the ashes of the JD Crane Group in 2004 GBK had almost 100 cranes. A year ago the company reported a fleet of 33 mobile cranes although we understand that this has since reduced to around 10 units.

Mammoet acquires in OZ

Mammoet Australia has purchased Hercules Crane Hire of Leonora, Western Australia. Hercules managing director Greg Roberts will remain with the company, becoming managing director of 'Hercules Crane Hire - a division of Mammoet Australia'.

Hercules was founded by Roberts in 1995 and now has locations in Leonora, Newman and Port

Hedland, its main office. In addition to an extensive fleet of mobile cranes with lift capacities to 400 tonnes, it also runs a heavy lift division. Mammoet Australia is part of the group's Asia Pacific region and is based in Hemmant, a suburb of Brisbane Queensland. The Hercules acquisition will substantially beef up its presence in the West of the country.

A trio of new models from GSR

Italian truck mounted lift producer, GSR has announced three new models between 18 and 25 metres that will be launched later this year. The first, the E180PX will be an 18 metre, articulated boom lift with dual sigma-type riser and platform capacity of up to 250kg throughout its entire working envelope. A range of outrigger/stabiliser options will be available with straight down jacking within the vehicle width, likely to prove the most attractive. The E180PX has been designed for 3.5

tonne chassis, such as the Nissan Cabstar, Iveco EcoDaily, Mercedes Sprinter EU5, Renault Maxity, Volkswagen Crafter and Ford Transit.

GSR will also launch heavy duty 18 and 25 metre platforms on a 7.5 tonne truck - the E180TJ straight telescopic boom for maximum

outrreach and the E250PXJ articulated telescopic boom with dual sigma riser. Both models will be equipped with articulated jibs and customers will be able to choose between a number of different basket capacities and outrigger configurations, starting from the simplest, narrow jacking option.



The GSR E180TJ on a 7.5 tonne truck



The GSR E250PXJ mounted on an Iveco Eurocargo



Fassi sells Socage

Italian-based loader crane company, Fassi, has sold its truck mounted aerial lift company Socage to a new business - First Step. The new company is led by Paolo Troni, the Italian entrepreneur who acquired Cela earlier this year, and Fiorenzo Flisi, one of the founders of Oil&Steel who now owns mobile crane company MCI that acquired the Mister Gru city crane business last year.

No official statement was available at the time of going to press but we understand that Flisi, will be

actively involved in the business and has been appointed president of Socage. Flisi sold his shares in Oil&Steel to BS Private Equity in 2007 after leaving the business to look for other opportunities.

While both Cela and Socage build truck mounted and crawler mounted spider lifts, the overlap is minimal with Cela focussing on aerial devices for fire fighting and Socage on the industrial market. At this stage we understand that the two operations will be managed separately.



Vertikal Days 2010

The date has been set for Vertikal Days 2010 - Wednesday/Thursday June 16th /17th at Haydock Park near Manchester.

A good number of exhibitors from this year's event have already booked space for 2010. Reservations are being encouraged, a full exhibitor pack will be issued within the next two months.





The new 104 metre Bronto HLA104 in Janneniska livery

Big Bronto debuts

Bronto surprised the access industry with the unveiling of its 104 metre HLA 104 truck mounted platform - the world's largest aerial lift - at this year's Platformers Days at the end of August. The new model, announced last May, is based on the 101 metre Bronto HLA 101 and has a similar overall length of just less than 17 metres. The extra height is achieved by marginally extending each of the five sections of the lower boom and redesigning the jib to compensate for the slightly longer stowed boom.

The machine retains the 2.55 metre overall width of the HLA 101 and is close to its total weight at 63 tonnes. Outreach is unaffected at 28 metres, although this will now be available at a greater height - almost 64 metres.

The platform has been sold to Janneniska, the Finnish-based aerial lift rental company. Bronto also used the show to launch its new distribution partnership for Germany with Rothlehner and announced that it has employed Ian James, formerly of APS, as sales director for the UK and Ireland.

Mega deck PB

Platformers Days also saw German-based scissor lift manufacturer PB Liftechnik unveil its new 11 metre (33ft) platform height, big deck electric scissor lift, the S131-16 ESLP. The new mega deck model is a compact, four metres long by 1.6 metres wide and less than two metres high for transport, yet boasts a full outdoor rating and a 6.2 metre extended deck with 500kg of unrestricted lift capacity.

The unit weighs just 5.6 tonnes, includes in-board jacks which provide up to 15 degrees of levelling for working on slopes or kerbs and non marking indoor/outdoor tyres.



A 6.2 metre long deck from a machine just over four metres long

Also at Platformers



Dinolift had its first showing of the track mounted 185 XTC

Omme launched a new spider - the 2750 RBDJ - sold to Würzburg-based rental company Ziegler



JunJin arrives in Europe

South Korean aerial lift manufacturer JunJin has finalised a distribution agreement with German based Liftprofi, appointing it as its European master distributor. Horst Krüger Geschäftsführer of Liftprofi and Yung-Sam Moon, JunJin director of overseas sales sealed the partnership with a symbolic handshake at Platformers Days. Liftprofi also exhibited two boom lifts the 43ft/13 metre platform height P-150A articulated boom and the 79ft/24 metre T260I telescopic boom. Krüger said: "We will distribute the machines in Germany, Austria, Switzerland, Netherlands and Belgium ourselves, but for the other major European countries we are looking for dealers."

He also confirmed that Liftprofi is to start building a European central warehouse for JunJin and that by November this year, five machines will have CE certification - 18, 22, 26, 34 and 38 metre working height booms with a 42 metre unit planned for early next year. JunJin says that it would like to have CE certification for its scissor lifts before Bauma 2010.



JunJin boom lifts on show.



Yung-Sam Moon (L) of JunJin and Horst Krüger of Liftprofi, seal their European partnership at Platformers Days.

Emsley gives Milne last order

David Milne, the outgoing managing director of Liebherr Great Britain, completed the last few days with the company finalising the last crane deal of his career - a 55 tonne Liebherr LTM 1055-3.2 All Terrain crane - to Emsley Crane Hire of Harrogate.

The crane, the fifth such model in its fleet, is the 50th Liebherr purchased by the Yorkshire company and caps a 30 year business relationship between Milne and the Emsley family.

David Milne waves goodbye from the cab of an Emsley Liebherr.



Look no outriggers

German truck mounted lift producer Ruthmann has launched an 11 metre lift and revealed plans for four larger units. The Ruthmann Light Pickup 110 is a one man (120kg basket capacity) truck mounted platform mounted on a 3.2 tonne Nissan Cabstar chassis, designed for operation without stabilisers. This gives the platform an 11 metre working height and 5.75 metres of outreach.

The company also revealed details of its new additions to its fourth generation TB range. Three new straight boom machines mounted on a 3.5 tonne chassis include the 27metre working height TB270,

the 23 metre TB230 and the 19 metre TB190, plus the 20.5 metre TBR200 which features a 110 degree articulated jib.

The new Ruthmann Light Pickup 110 has an outreach of 5.75 metres without stabilisers.



Most of the companies we cover have reported their first half results, few of which make pleasant reading. However it does seem that the situation is stabilising.

Bronto up 16% Finnish-based truck mounted lift producer Bronto recorded first half year revenues of \$74 million, an increase of almost 16 percent on the same period last year. However order intake during the period plunged to \$42 million from \$101 million in 2008. Operating profit for the six months jumped more than 87 percent to \$7.3 million. The company's order book at the end of June was £107 million, 50 percent down on last year.

Manitou down 50% French-based telehandler and aerial lift manufacturer Manitou has reported first half revenues of €358 million, a drop of 50.7 percent compared to the first half of 2008. Second quarter revenues were down 55 percent, but order intake for rough terrain fork trucks, largely telehandlers, improved 15 percent compared to the first quarter.

Hewden down 30% UK-based crane, telehandler and access rental company Hewden, reported first half revenues of £62 million (C\$118.2 million) a fall of around 30 percent. Hewden is blamed for most of the loss of C\$14.7 million (£7.7 million) at Finning UK through which it reports, compared to a profit of C\$46 million (£24 million) in 2008.

Manitowoc crane down 32% Manitowoc has reported first half crane revenues of \$1.035 billion a fall of 32 percent, while operating income slipped 65 percent to \$106 million. The second quarter showed a further softening compared to last year with sales falling 39 percent to \$652 million while operating income was 70 percent lower at \$49.5 million although the company says order intake has begun to stabilise.

Terex Cranes falls 36% Terex Cranes reported first half revenues of \$952 million, 36 percent down on the same period last year. Most of the decline is due to lower sales of tower and Rough Terrain cranes, while big crawlers and All Terrain sales have held up well. Profitability declined almost 80 percent.

Genie down 70% Terex AWP/Genie has reported half-year revenues of \$438 million, almost 70 percent lower than 2008, while sales in the second quarter declined 72 percent, but the company says the situation is stabilising. Gross margins during the period slipped to just 3.6 percent compared to over 26 percent last year, while the business posted an operating loss of \$74 million compared to a profit of \$240 million in 2008.

Palfinger slips 36% Austrian-based crane and access manufacturer Palfinger has reported a drop in first half revenues of €269.2 million or 36 percent on the same period last year. New group additions Wumag and Omaha Standard contributed €45 million to the revenues. The company posted a pre-tax loss of €8.5 million compared to a profit of €59.2 million last year.

JLG down 65% JLG reported nine month revenues of \$829 million, a fall of 65 percent compared to the same period last year. It also posted an operating loss of \$1.06 billion, of which almost \$900 million was due to asset write-downs. The underlying loss was around \$167 million.

Ashtead drops 19% UK-based rental group, Ashtead, owner of Sunbelt in the USA and A-Plant in the UK, has reported first quarter revenues down 19 percent to £221.6 million. The group also reported pre-tax profits down by more than 92 percent to £8.2 million.

Haulotte down 61% Haulotte's first half results show a 61 percent fall in total revenues to €99.8 million and net loss of €32.1 million. The decline is masked somewhat in that Bil-Jax was not part of Haulotte's first half numbers for 2008. Rental revenues at €13.9 million were 11 percent lower than for the same period last year.

Lavendon drops 7% The world's largest specialist aerial lift rental company Lavendon reported first half revenues of £114 million, seven percent down on the same period last year. Underlying pre-tax profits fell almost 63 percent to £5.3 million. However it booked exceptional costs of \$45.2 million during the period which resulted in a pre-tax loss of £40 million, compared to a profit of £11.9 million in 2008.

Skyjack falls 62% Skyjack, the Canadian-based aerial lift manufacturer posted first half revenues of C\$105 million for the first half of 2009, a fall of 62 percent on 2008, while last years operating profit of C\$33 million has turned into a loss of C\$10.9 million for the first half of 2009.

Ramirent drops 28% Finnish-based international rental company Ramirent, posted first half revenues of €246.8 million, a decline of 28 percent on last year, at the same time pre-tax profits fell 78 percent to €12.3 million. The second quarter showed similar levels of year on year declines, with revenues down 31 percent to €124 million and profits down just over 62 percent to €11.2 million.

Harsco dips 27% Harsco Infrastructure which comprises SGB, Hünnebeck and Patent Scaffolding has reported first half revenues of \$592.5 million, 27 percent lower than for the same period last year. Operating profits dipped 34 percent to \$43.8 million.

Hiab drops 39% Loader crane company Hiab has posted first half revenues of €292 million, down 39 percent on 2008. Order intake for the period was €268 million, a fall of 43 percent, leaving an order book at the end of June of €138 million.



Specialist IT solutions for the rental industry

"inspHire gives us the
competitive
edge we need to succeed"



Geoff Gibson, Director - AFI-Uplift

"I would like to say thank you to inspHire. The inspHire software is part of our process that provides us with instant information on our business enabling us to adjust to market trends and regional variations"

Whatever the size of your business, inspHire provide hire management software solutions that will deliver proven results. Contact us today and become inspHired.

0800 634 0600
sales@inspHire.com
www.inspHire.com



HigherAccess

NATIONWIDE SPIDERLIFT & SPECIALIST HIRE

MULTI BRAND TRACKED ACCESS PLATFORMS WITH WORKING HEIGHTS FROM 13 - 36M

AVAILABLE FOR CROSS HIRE



24 HOUR NATIONAL COVERAGE

TO MAKE A BOOKING PLEASE CALL US ON:

01706 826931

OR VISIT US ONLINE AT:

WWW.HIGHERACCESS.CO.UK



WE ALSO BUY SECONDHAND SPIDERS

TEUPEN - OMME - NIFTY - CTE - BLUELIFT - OTHER

New 22m truck mount



The new Palfinger P220B

Palfinger has launched the P220B, a 22 metre version of its 26 metre, 3.5 tonne chassis P260B unveiled at Intermat. The new platform has 14.5 metres of outreach, thanks to its lightweight extruded aluminium boom design, which also routes all hydraulic and electrical cables internally for added protection against damage. Available outreach is adjusted automatically according to the weight in the basket and the platform has a full 180 degrees of rotation.

Standard features include variable width outriggers controlled from the platform, automatic outrigger set-up and levelling, as well as automatic return to the transport position, including outrigger retraction.

Numerous safety features include additional lock valves on the lift and outrigger cylinders and an integrated monitoring system for wheel clearance when jacked. An insulated basket is also available.

Merlo 'Plus' telehandler

Merlo is offering an upgraded 'Plus' version of its 17 metre Panoramic P40.17 telehandler. The new 'P40.17 Plus' features an 88kW (140hp) Deutz engine as well as the company's Merlin digital control package, giving direct readouts of all engine and control parameters, including lift capacity, on a digital operator display unit.



Plus models feature the Merlin display panel.



The Merlo P40.17 Plus

The package gives the operator more concise and accurate information, while the owner benefits from the standard inclusion of an electronic anti-theft immobiliser as well as a full suite of diagnostic service tools.

A bigger Penny

Penny hydraulics and Hinowa have launched their second and larger crawler mounted mini crane, the 1.2 tonne capacity TP2000/FV1200 with four section 4.3 metre boom. Based on the Hinowa TP2000 tracked chassis and Penny Hydraulics' FV1200 crane, the unit is powered by a Honda petrol engine and can be used with a wide range of attachments, including a transport deck and fork lift. The operator stands on a platform at the rear of the unit where he has a clearview of the crane, load and working area.

The crane lifts and will carry its full load chart - 1,200kg maximum capacity at 1.5 metres radius, 450kg at 3.5 metres and 250kg to its full 4.3 metre extension. There is also a choice of electric or hydraulic winches, which are particularly useful for below ground work, or given the cranes 1,125kg weight, when working from elevated locations such as rooftops.

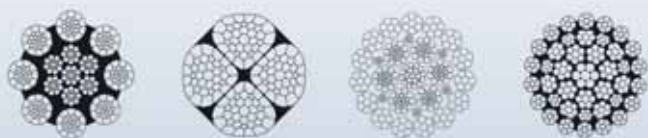


The TP2000/FV1200 can handle 250kg at 4.3m and with the boom stowed it measures 1.9m x 1.74m and 2m high

Your partner for special wire ropes



Please get in contact with us!



www.carlstahl.com

Crane tyre warning

Tyre manufacturer Michelin has warned that its 445/95 R 25 X Crane 174F tyres should not be used with axle weights of more than 15.6 tonnes because in certain circumstances irreparable internal damage may be caused. A statement from the manufacturer said that any crane owner with machines that have exceeded these axle weights, or tyre dealers/sales companies that have sold these tyres for applications involving excessive axle loads should contact its offices.

The alert will mainly be of concern in the UK where STGO rules allow cranes to travel on public roads with axle loads of 16 tonnes and more, rather than the usual European norm of 12 tonnes.

Michelin UK can be contacted on 0800 454 774 or 01782 402309.



Michelin has warned on tyre loadings

Trad takes Monkeys



Trad Safety Systems of the UK has taken delivery of its first batch of Monkey Towers for its rental fleet. The road-towable Monkey Tower is intended as a quick and easy alternative to scaffold towers and a lighter, less expensive alternative to powered access.

A single person can be up and working within five minutes of arriving on site. The unit can be towed behind almost any vehicle, while long jacks allow it to be set up on slopes and steps.

"The Monkey Tower is an ideal complement to our range of fall prevention systems and from £200 per week offers great value to our customers," said Jim Gorman of Trad.

The Monkey Tower.

Liebherr buys Saints

Markus Liebherr of the Liebherr crane family has purchased Southampton Football Club. Liebherr is one of Hans Liebherr's sons and owner of the Mali Group which includes several companies specialising in advanced fuel injection and transmission technologies.

Liebherr inherited an equal share in the crane and construction equipment business but reportedly relinquished, sold or transferred his shares to those members of the family involved in the day to day running of the business.



He says that he was attracted to the first division club by a number of qualities which include "the club's rich sporting heritage, loyal fan base, first-class stadium and training facilities and the potential for the Saints to regain their rightful place in the higher echelons of English football."

Markus Liebherr at his first Southampton game as owner - a friendly against Ajax.

Vehicle mounted access
Market Leader
New Build / Service / Training
New LVI option



1 Altendiez Way, Latimer Park,
Burton Latimer, Northants. NN15 5YT
t:01536 721010 f:01536 721111
e:sales@versalift.co.uk



www.versalift.co.uk



Consider the possibilities...



Kranlyft UK Ltd
0117 982 6661
marketing@kranlyft.co.uk
www.maedacranes.com
Unit 1, IO Centre, Cabot Park, Avonmouth, BS11 0QL



■ Glass Handling ■ Cladding ■ Restricted Access ■ Rooftop Lifts ■ Maintenance Work
■ Timber Builds ■ Artwork Installations ■ Industrial Maintenance ■ Uneven Ground
■ Railways ■ Utilities ■ Access Work ■ Man Baskets ■ Steelwork

More Multitel sales from Vertikal Days

Access Industries, the UK Multitel dealer, has delivered two new platforms sold at Vertikal Days. Newcastle-based Warren Access has added a 20 metre MX200 to the 27.3 metre MX270 it purchased last year, while Rapid Platforms has taken an MX 225 mounted on a Renault Maxity with in-board jacking and 10 metres outreach.

"This is the first order in the UK for the 22.5 metre MX225 but we have had lots of interest since Vertikal Days," says Melvyn Else of Access Industrie



"The platform has a number of features not normally seen on a 3.5 tonner including 90 degree cage rotation.

(L to R) Dereck, Graeme and Michelle Warren of Warren Access and Melvyn Else of Access Industries with the Multitel MX200 mounted on an Iveco 35S12 chassis.

Improved Leonardo from Bravi

Bravi, the Italian-based aerial lift manufacturer has unveiled an improved version of its popular 2.9 metre platform height Leonardo self propelled lift. Changes based on customer input include an outdoor version, a new control box with trigger type deadman-switch, an improved swing gate with stainless steel hinges, improved step entry to the platform, stronger redesigned covers, a heavier chassis with tie down and lifting eyes and wider wheels to improve traction and provide lower ground bearing pressure.

The platforms continue to make headway into the UK market with Hull-based Compact Lifting Equipment recently adding three units to its growing crane and access fleet.

The new improved Bravi Leonardo.



Self propelled telehandler

Meis Baumaschinen of Reken, Germany, has introduced the Boomlader - a quick-fit, fully self propelled platform attachment designed specifically for Bobcat telehandlers. The platform can be fitted, or retrofitted, to any four tonne capacity, 14 to 17 metre lift height Bobcat. The platform extends from 2.5 to 4.2 metres, with a lift capacity of 320kg - three men plus tools.

Jürgen Meis, managing director says the platform includes two push button control panels, one for drive and outriggers, and one for the platform controls. "It can easily be installed in a few minutes and the combined package has been certified by TÜV to all relevant machinery directives."

The price guide is €22,000 as a fitted retrofit package or €18,000 when installed on a new Bobcat.



When fitted to the Bobcat T40170 maximum platform height is 17.5 metres, while outreach at full capacity is 11.8 metres with 12.8 metres possible with 100kg in the basket.

Your experienced partner in...
...equipment parts.



PSE MEWP PARTS DIVISION

- A provider of exact OEM replacement parts for scissor and boom lifts.
- Highly experienced customer service staff.
- Parts are shipped the same day ordered with no extra charge.
- No hassle with returns.
- Competitive pricing.

GENIE
HAULOTTE
HOLLAND LIFT
JLG
MEC

NIFTYLIFT
SKYJACK
SNORKEL
UPRIGHT
AND MORE...

PlatformSales
EUROPE

PlatformSales Europe • Maxwellstraat 50 • 3316 GP Dordrecht • The Netherlands
T. +31 78 65 217 65 • F. +31 78 65 217 60 • E. sales@platformsales europe.com • I. www.platformsales europe.com

Valla parts company with UK distributor

Italian pick & carry crane manufacturer Valla, has parted company with Valla UK its long time and for many years its largest distributor. Valla UK and more recently Compact Lifting Equipment is owned and managed by Peter Hird Jnr who has worked with Valla for more than a decade, developing the market for in the UK as well as North America and the Middle East. Valla says that it has not yet made a decision on a replacement for Valla UK.

BMW buys Italian Galizia

BMW UK is the first end-user to purchase the new Galizia G20, two tonne, pedestrian controlled, pick & carry crane launched at last year's SAIE show in Bologna. The new crane has been delivered to the company's Hams Hall engine plant near Coleshill, Birmingham, where it is being used for production maintenance and removal of the mounting plates on the multi-axis machining robots. The unit was sold by Galizia UK distributor, GGR, which also provided full training for the staff using the new crane.



The G20 demonstrates its pick & carry capability.

New Telehandler from Redrock

Northern Ireland-based Redrock Engineering has introduced the TH320, a new three tonne capacity, pivot steer telehandler which replaces the TH280S launched in 2004.

The TH320 - a completely new machine designed with the agricultural market in mind - has a short central front mounted boom with provides a 5.2 metre lift height, 3.2 metre outreach and 3,000 kg lift capacity. Other features include a new larger tilting cab with improved visibility, an Iveco 93kw/126hp engine, up-rated torque converter and six-speed power shift transmission, up-graded axles and a limited slip differential.



The new Redrock TH320

Manitex acquires RT cranes

US boom truck manufacturer Manitex has acquired Badger Equipment Company, the Winona, Minnesota-based crane and excavator manufacturer, for \$3 million from Avis Industrial.

Badger's current crane business is based around the Little Giant, lattice boomed, truck mounted, self propelled and crawler mounted road/rail cranes.

The company is launching a new, 30 ton capacity cab-down RT Crane - the CD4430 for delivery later this year.



The new CD4430.

**QUALITY CREATES SAFTY –
MOBA CONTROL SYSTEM
FOR AERIAL WORK PLATFORMS.**





Remote control unit



Platform slope sensor



MRW



Controller



Control panel

**New mobile slope sensor
special for aerial work platforms**

- 1-axis-sensor
- Operates with two completely independent (and redundant) channels
- Compact, flat design
- Rugged design with approved sealing, for mobile use
- Optimised for immunity to vibration and acceleration
- Quick measurements – optimal automatic levelling
- Does not contain mercury
- Isolation complies with DIN/VDE standard 0682-742
- Protection class IP67
- Zero point adjustment via infrared interface with remote control unit
- Competitively priced



it's MOBA
www.moba.de

MOBA Mobile Automation AG • Germany
65555 Limburg • Phone: +49 6431 9577-123

Your online partner in... ...powered access platforms.

Our online parts shop offers you the following features:

- Information on pricing and availability is directly given.
- For clarification a photo image is displayed of every found item.
- A customer friendly interface, allows you to search with your own reference numbers.
- Carrying a parts inventory of the most well known access manufacturers.
- Able to place your order via a recorded customer database or with the use of your credit card.




Introducing a brand new www.platformsaleseurope.com

Our new website contains all relevant information of the products we trade. Brochures and literature can be downloaded in the language you prefer. With a constant evolving dataflow, the information is always up to date and allows you to stay tuned at any time.

The number 1 is always on top!

Now also **online!**



PlatformSales
EUROPE

PlatformSales Europe • Maxwellstraat 6 • 3316 GP Dordrecht • The Netherlands

T. +31 78 65 217 65 • F. +31 78 65 217 60 • E. sales@platformsaleseurope.com • I. www.platformsaleseurope.com

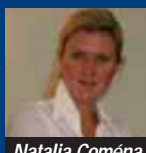
- **Cargotec** has broken ground on its new assembly facility in northern Poland.
- **Lifting Solutions** of South Yorkshire has launched an offshore division.
- **Kier Plant** has appointed **Guy Marchant** as national manager of its cranes division.
- **Vp**, owner of **UK Forks**, has appointed **Stephen Rogers** as non-executive chairman of its audit committee replacing **Barrie Cottingham** who retires.
- **Thomas Ostermann** has been appointed VP and managing director for **Terex's Fantuzzi/Noell** port equipment business.
- The Italian entrepreneur **Dario Piccin**, president of **Imai-Jekko**, the mini, passed away on September 5th aged 77.
- **United Rentals** has appointed **Ned Graham** as VP business development.
- **Bobcat** is to consolidate US production in Gwinner, North Dakota.
- **WD Bennett**, the failed tower crane company, has been fined £125,000 plus £264,299 in costs.
- **John G. Nestor** has returned to USA crawler crane specialist **Essex Crane Rental**, as a non executive director.
- **Terex-PPM** has delivered its 300th reach stacker to Brazil.
- **Steve Geldard** has been appointed as general manager of **Access Rentals** now under **Haulotte** ownership.
- **Ramirent** has appointed **Peter Dahlsten**, 51, as senior vice president of Sweden and Denmark and **Mikael Kämpe**, 41, as director, group fleet, both join the group management team.
- **Link Belt** has appointed **General Equipment & Supplies** as its distributor in North Dakota and **Consultants F. Drapeau** for Quebec.
- **IPS** and German-based **Powerlift** have launched a joint venture online parts service.
- **Cargotec**, owner of **Hiab** and **Kalmar** has appointed **Lennart Brelin** as executive vice president, Americas for the combined businesses.
- **Bronto Skylift** has appointed **Ian James** as its sales director for the UK and Ireland.
- **Terex Utilities** has appointed **Cumberland Industries** as its distributor for the UK, Ireland, Jordan and Iraq.
- **Datek** is claiming to be the first radio remote control manufacturer to achieve ISO 14001:2004, environmental certification.
- **Bruno Fille**, executive vice president of **Manitou**, has resigned.
- **Manitowoc** has been dropped from the **S&P500** after its market-cap fell below \$900 million.
- **PSE** has launched a new online parts shop with innovative parts identification and purchase options.
- **Seaway Heavy Lifting's** 5,000 tonne floating crane the **Oleg Strashnov** was launched at the end of August.
- **Kranlyft** has appointed **Natalia Coména** to assist with its **Maeda** sales in Russia.
- **Manitou** has appointed **Hervé Rochet** as financial director, **Jérôme Tertrais** as human resources director and **Hervé Saulais**, as general secretary to the group's executive committee.
- **H N Krane** has taken delivery of a 1,200 tonne **Liebherr LTM 11200-9.1**
- **Harsco's** access division has signed a new Joint Venture deal with the **Al Baroom Group** in Saudi Arabia.



Guy Marchant

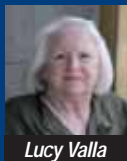


Ian James



Natalia Coména

- **Eve Trakway** has acquired **Anglia Traffic Management**.
- Belgium-based **Heli** has obtained planning permission for its new premises near Wetteren.
- **Youngman** has signed a distribution agreement with **Staging Concepts** of Minneapolis, USA.
- Mrs **Lucilla (Lucy) Valla**, president of **Valla SpA** passed away on Saturday August 15th aged 69.
- Australian crane association, **CICA** has purchased new offices in Mulgrave, near Melbourne.
- **UpRight** powered access has appointed **Airco SA** of Panama City as its distributor for Panama.
- **Terex** has promoted **Kurt Bollman**, to general manager of **Terex ASV**.
- **Palfinger** has formed a joint venture with the **Kraft Invest Group** to expand its sales operations in Russia.
- **Bronto Skylift** has appointed **Rothlehner** as its "Industrial" distributor for Germany.
- **Essex Crane** has appointed **Kory Glen** as director of finance.
- **Tat Hong** Holdings has invested in a new joint venture in China.
- **Alimak-Hek** has appointed **Patrik Nölåker**, 46, as chief executive, replacing **Petter Arvidson** who becomes a non executive director.
- **Oshkosh** is to sell up to 14.95 million new shares in an underwritten public offering.
- **AIF Capital Asia III** has invested \$65m in **Tat Hong Holdings**.
- **Leigh Farmer** previous owner of **Higher Platforms**, now part of the **Lavendon** group, has left the business.
- The **House of Lords** is to examine the Work at Height Regulations 2005 to assess their impact and implementation.
- **Tanfield's** electric vehicle joint venture in the USA, has won Federal funding to speed the development and deployment of its electric vehicles.
- **System Lift**, the German grouping of independent aerial lift rental companies, has reported total member revenues for 2008 of €104 million.
- **Instant UpRight** has appointed **Ian Simpson** as boiler access development manager, while **Joe Oxley**, becomes district manager for the Middle East and **Gerry Dunne** takes over as key account manager for Ireland.
- **inspHire** has agreed a partnership deal with online rental marketplace, **Erento**.
- **Instant/Upright** the alloy tower manufacturer has lost its legal battle with Spanish producer **Alufase**
- **Vertikal.Net** broke the five million hits a month barrier in July, while pages viewed passed the 2 million level for the first time.
- **Grant Mitchell** director of **Ainscough** heavy cranes and Southern region has left the company.
- **Ainscough** has combined its Northern and Southern regions under **George Kesterton**, previously sales director for the northern region and **Steve Wathen** is promoted to commercial director, heavy cranes.
- **Steve Shaughnessy**, managing director of **Loxam UK**, will leave the business later this year.



Lucy Valla



Patrik Nölåker



Ian Simpson



Joe Oxley



Gerry Dunne

- **Mecaplus**, has appointed **AST GmbH** as its exclusive distributor in Germany, Switzerland and Austria.
- Pennsylvania-based **GGS** has launched a series of web-based online crane operator and signaller training courses.
- **Upright** has appointed **VIC Equipments** as its distributor in Algeria and **Société Le Matériel SA** as its distributor for Tunisia.
- **Terex AWP** has appointed **Mike Mrotek** as senior product manager for **Genie's** North American telehandler product line.
- **PP Engineering** of Rotherham, UK, has taken delivery of a 220 tonne **Tadano Faun ATF220G-5**.
- **Speedy hire**, has signed an agreement with **Al Futtaim Carillion** to establish an operation in the Middle East.
- Six individuals have been charged with insider trading during the acquisition of US rental company **NEFF** by **Odyssey Investment Partners** in 2005.
- **Cramo**, has reported first half revenues down 23%.
- **H&E Equipment** has reported first half revenues down more than 30%.
- **Faresin** the telehandler and building equipment company has reported 2008 revenues up 13%.
- **Tat Hong**, has reported first quarter revenues down 37%.
- Las Vegas based **Ahern** has reported first half revenues down almost 26%.
- **Essex Crane** has reported a 25% fall in first half revenues but is increasing its capex.
- **United Rentals** has reported a 24.6% fall in first half revenues and a loss of \$62 million.
- **Terex Cranes**, **Zweibrücken** has appointed **Frank Schroeder** as director of parts and service.
- **RSC** has reported first half revenues down 22% on last year.
- **Hertz Equipment** has reported first half revenues of \$556.5 million a decline of almost 35%.
- **Trico** the US aerial lift rental company has opened a new location in San Antonio, its second branch in Texas.
- **Hertz Equipment** has acquired **Irving Industrial Rentals** of Saint John, New Brunswick.
- **Nacanco** the Italian aerial lift and telehandler rental company has moved into new premises in Brescia.
- **Facelift Access Hire** has taken delivery of its 20th, 17 metre truck mounted lift from British based manufacturer **Ascendant Access**.
- **AJ Access** has been appointed as a **PASMA** approved training centre, offering mobile access tower training from three locations.
- German aerial lift rental company **Mateco** has acquired **Kühne Arbeitsbühnen**.
- **Peter Hird and Sons**, has become a fully accredited test centre for the new **CPCS** training scheme.
- **Altec** has announced that it will close the **Lift-All** plant in Fort Wayne Indiana.
- **Edins Kranar** of Järfälla, Sweden, has entered the spider crane market with an investment in three **Maeda** cranes.



Frank Schroeder

See www.vertikal.net news archive for full versions of all these stories