

Terex sells Atlas..... to Fil Filipov?

Terex has announced that it has reached an agreement to divest the Atlas excavator and loader crane business. No financial details or the identity of the buyer have been released. However local reports in Germany, indicate a company in which Fil Filipov is involved is the buyer. Further checks by Cranes & Access also confirmed this. Filipov was responsible for the Atlas acquisition in 2001. His son Steve was seconded from Terex to Atlas prior to the acquisition and managed the business when it became part of the group.



Fil Filipov

Product lines included in the deal are Terex Atlas loader cranes and crawler, wheel and rail mounted excavators, as well as the Ganderkesee, Vechta and Delmenhorst facilities in Germany and Terex Atlas of Bradford, UK. It also includes Terex's minority holding in the Atlas Chinese joint venture.



Terex Atlas crane

The business is being divested together with an undisclosed amount of capital to help support the business. Terex chief executive Ron DeFeo, said: "We acquired the Atlas business in 2001 with the intention of having a quality full-size excavator as part of a globally competitive portfolio of construction equipment. Our goal was to grow the regionally strong Atlas excavator product as part of this strategy, but we were, for various reasons, never able to achieve the product cost advantage required for it to be successful."

"Despite restructuring attempts, the tough economic conditions in 2009 resulted in an operating loss for this business in excess of \$61 million on sales of approximately \$194 million, with approximately two-thirds of the loss coming from the construction products."

Winterlift closes its door



The sun has set on Winterlift

On March 12th Manchester and Sheffield-based crane hire company Winterlift became the latest UK crane company to file for bankruptcy by entering administration. A spokesperson for administrator Deloitte, which has taken over the management of the business said that it was assessing the situation but had ceased all trading. Owners and managers Andrew and Peter Winter have left the business, with Andrew Winter telling Cranes & Access that he had no plans for the future and would take a month off before considering his future.

The company was founded in 1999 and acquired Yorkshire Crane Hire of Sheffield in late 2008, which according to Cranes & Access Top 30 crane rental companies 2009, made it the 14th largest crane rental company in the UK and Ireland, with a fleet of 42 mobile cranes with capacities of up to 500 tonnes.

Ommel launches 37m spider

Danish spider and trailer lift manufacturer Ommel Lift has announced a new 37 metre telescopic spider lift, the 3700RBDJ with bi-energy power pack. The new lift features a seven section boom plus 130 degree articulated jib and full 180 degree platform

rotation. Outreach is 14 metres and maximum lift capacity 250kg.

Power comes from a Kubota diesel for outdoors with a dual motor battery electric system for indoor use or where noise is an issue. A large eight battery power pack ensures a decent shift between recharges.



Ommel Lift's new 37 metre spider

Bronto to launch 112 metre truck mounted lift

Finnish manufacturer Bronto Skylift has announced that it will break its current record and unveil a 112 metre truck mounted aerial work platform at Bauma in April. The company already holds the record with its S-104HLA model, which is a metre higher than the Palfinger-Wumag WT1000, the first lift to exceed 100 metres. Bronto has declined to release any photographs or drawings of the new lift before Bauma. We do know however that the

Bronto S-112 HLA will offer an outreach of 25 metres at a height of 90 metres and will be mounted on a Mercedes Benz 76.60 commercial truck chassis, with five steered and four driven axles. The overall road height will be below four metres, with a total length of around 19 metres.

The new lift will feature the Bronto+ control system with upgraded Telecontrol, automatic outrigger levelling and visual interactive display.



The
Maeda
LC383

New Maeda mini arrives

Maeda is set to launch its smallest CE pick & carry mini crane to date, the 2.93 tonne Maeda LC383M-5. The company has offered smaller models in Japan, including a smaller boomed version of the LC383, but never made them readily available in Europe. Features include an 8.7 metre four section telescopic boom, up to 1.46 tonnes pick & carry capacity an open but covered superstructure mounted operators cab and a gross weight of 4,500kg.

The LC383 has primarily been developed for use in areas such as city centres where the highly compact tracked footprint requires no need for outriggers and zero-tailswing.

Tanfield receives offer for Smiths

Tanfield, owner of UpRight and Snorkel aerial lifts has received an offer for its Smith Electric Vehicles business. The non-binding, conditional offer has been made by its US Joint venture Smith Electric Vehicles US Inc (SEVUS) and could be worth as much as £70 million. Tanfield has given SEVUS a four month exclusivity on the deal.

The offer is for Smiths' 49 percent holding in SEVUS, the license agreement between Tanfield and SEVUS and all intellectual property associated with the business. The deal comprises £37.0 million in cash (equivalent to 50p per share) plus an additional £33.3 million payment in the event that SEVUS goes for a stock market flotation prior to September 2015. In the case of an IPO going ahead within the timeframe, the deal would be worth 95p a share.

Tanfield has stressed that it cannot be sure that any agreement can be finalised nor whether SEVUS is in a position to raise the finance required for the deal.

A Smiths Edison truck fitted with Versalift boom lift.



Worldlift name change

Worldlift Industries is set to change its name to Skako Lift following a nine month restructuring which has transformed the way the company works. The change reflects the fact that its owner Skako Industries is making access equipment one of its core businesses.

A full interview with managing director Kenneth Loburg and report on recent changes can be found on page 23.

SKAKO
LIFT



Jekko's first spider lift SPL17

Jekko enters the spider lift market

Italian-based spider and pick & carry crane manufacturer Jekko will launch its first spider lift work platform at Bauma.

The 17 metre SPL17 will offer up to seven metres outreach from its dual arm parallelogram riser, two section boom and articulating jib. The track and outrigger controls are electro-hydraulic, while the superstructure is fully hydraulic and the standard version includes automatic chassis levelling.

Dimensions are compact with a 780mm wide chassis and an overall height of 1,980mm. Optional extendable tracks are available to provide higher ground clearance and

better stability on rough terrain.

Marco Zava, product manager for Jekko, said: "Spider lifts match with Jekko's mission, 'lift anywhere you need, no matter if people or materials'. Our production and distribution synergies have been put together in this product. We feel confident that it will meet our dealers' and customers' enthusiasm and we have plans to extend the range in the near future."

The company is also launching a new version of its SPD500 mini crane the SPX527 at Bauma. It will have a longer boom and increased capacities.

Platform Basket to launch trailer lift

Italian spider lift manufacturer Platform Basket will unveil its first trailer lift at Bauma in April. The first units will be a 15 and 18 metre family which the company says will be lightweight, easy to tow, simple and reliable.

A 13 metre model will follow later in the year. Given that few trailer lifts are sold in its home market, Basket expects over 80 percent of the trailer lift production will be exported.



Platform Basket will launch a 15 and 18 metre trailer lift at Bauma.

JCB announces new telehandlers

JCB has launched a number of new telehandlers including its smallest yet, the 1.5 tonne/four metre 515-40. By using the off-set, single spine chassis first seen on its Miniscopic, it has been able to reduce the overall height to just 1.8 metres, length to 2.97 metres and weight to less than 3.5 tonnes, while allowing a spacious easy to enter cab.



JCB 515-40

The compact 527-58 Loadall is just two metres wide and two metres high with a maximum lifting capacity of 2.7 tonnes and a lift height of 5.8 metres. Even at full three metres forward reach, the 527-58 can handle a useful 1.25 tonnes. Power is supplied by either the 85hp or 100hp JCB Dieselmex engine, driving through a hydrostatic transmission with travel speeds of between 25 and 40 kph depending on tyre and transmission combinations.

The new 550-80 is JCB's highest capacity telehandler, specifically designed for bulk handling operations in waste and industrial sectors. The unit offers a lift height of eight metres with a

maximum lift capacity of five tonnes.

Designed to work equally well with forks or a shovel, it has the capacity to operate with 3.5 cubic metre high capacity buckets. With servo controls as standard and the option of a seat mounted servo, the operator benefits from low lever efforts and excellent ergonomics, all increasing efficiency.

The new EN15000 standard calls for the introduction of a longitudinal load moment limiter on telescopic handlers produced after September 2010. JCB has developed an innovative progressive cut-out that prevents the operator exceeding the machines forward stability capability.

JCB has also made one of the biggest investments in its history - £80 million - to develop what it claims is the off-highway sector's cleanest engine, in readiness for incoming emissions legislation.



The compact 527-58 Loadall

The investment has delivered an industry-first solution which eliminates the need for any exhaust after-treatment (including Diesel Particulate Filter). The engine is now undergoing full in-field testing before going into production in 2012 to meet Tier 4 interim/Stage 3B legislation.



JCB has invested £80 million to develop its latest Dieselmex engine

Chinese 1,000 tonner

Chinese-based Sany Heavy Equipment has unveiled the 1,000 tonne SAC 303 - its largest All Terrain telescopic crane to date - to a small group of employees and dignitaries as it rolled off of the production line in Changsha, Hunan province in early March. Photos taken on a mobile phone by a C&A reader give an impression of the new crane. At first glance it has some similarities to Liebherr's flagship LTM11200-9.1 and the new Terex AC1000, with a nine axle carrier and a swing out outrigger design. The 100 metre boom is designed to be removed for road transport.



Sany 1,000 tonne - boom on.



Outriggers are very similar in design to Liebherr's LTM12000.

UK confirms position on new crane directive

The UK's Health & Safety Executive has confirmed that it will enforce the new Rated Capacity Limiter override arrangements in spite of the delay in publication of the EN13000:2010 standard. The latest version of the machinery directive 2006/42/EC came into force at the end of December and requires the consideration of reasonably foreseeable misuse of the equipment.

The new standard highlights the inappropriate use of the over-ride device as an area of foreseeable misuse and incorporates a set-up button for rigging and the placing of the override switch outside of the cab along with the fitting of a data logger to monitor use of the override.

With no current standard in place that fully complies with the new directive, crane manufacturers and importers must ensure that cranes built and certified after December 29th 2009 are checked for compliance with the Essential Health and Safety Requirements of the new directive. The HSE is adamant that this means that the new override and set up buttons must be fitted.

Under the Health and Safety at Work etc Act 1974 the HSE has powers to take enforcement action with both suppliers and users of mobile cranes, where they have not complied with Health and Safety Legislation.

See letters page

Liebherr City first

Liebherr has released the first photographs of its new 45 tonne City All Terrain crane the LTC1045-3.1. The three axle crane bridges the gap between single cab city cranes and dual cab All Terrains. The crane's cab is mounted on a short telescopic boom allowing it to sit in the normal superstructure position when on site, telescoping to the front of the chassis for road travel. The compact crane weighs 36 tonnes with a 36 metre, five section main boom and bi-fold 13 metre swing-away extension with a short 1.5 metre jib integrated into it which can be offset up to 60 degrees.

The Liebherr LTC1045-3.



New Merlo platform

Merlo unveiled its new All Terrain aerial work platforms - the MPR 15 and 18 - along with a host of other new products at its Cuneo headquarters earlier this month. The 40kph road-going four wheel drive, four wheel steer, All Terrain big deck boom lift boasts a 1,000kg platform capacity and 180 degrees of platform rotation in each direction giving over 2.5 metres of clear lateral outreach in addition to the fore and aft outreach provided by the boom type lift mechanism. The lift can level by nine degrees side to side and five degrees end to end.



The MPR platform rotates 360 (2x180) degrees.

- MPR 15 and 18 basic specifications
- GVW 11,500 and 12,500 kg respectively
 - Overall length: 6.3 and 6.5 metres
 - Overall width: 2.24 metres
 - Overall height stowed: 2.92 metres
 - Working height: 15 and 18 metres
 - Lift capacity: 1,000kg

Merlo also announced a new Eco Power drive system that links a machine's hydrostatic pump, motor and engine through a smart controller which reacts to the speed demands from the operator (via the accelerator) and delivers the power in the most efficient manner. The system has three settings including one that returns the unit to normal drive.

The company says that the new system will provide up to 30 percent fuel economy and a 2.5 decibel noise reduction. The first model to be fitted with the system is the 55.9CS.



The MPR15 fully extended

H.A.B reveals new boom

German-based aerial lift manufacturer H.A.B has unveiled the T 35J D4WDL - a 100ft/33metre platform height telescopic boom lift with up to 25.1 metres of outreach from its four section octagonal boom and articulating jib. Platform capacity is 250kg. The machine includes extendible axles which provide a 2.51 metre transport width with a 3.2 metre working width. The four wheel drive, four wheel steer chassis also boasts 270mm of ground clearance. The lift will be on show at Bauma next month.

The new 100ft/35m H.A.B boom will be on show at Bauma



Socage appoints new UK dealer

Socage has appointed Kettering-based Cumberland Industries as its distributor for the UK. The appointment also ends Cumberland's association with Oil&Steel which, it says has been unable to supply a boom for a jointly designed Land Rover-based platform. Socage has most recently been distributed in the UK by Kalmar following the demise of Allen Access. Kalmar has now merged with Hiab UK as part of Cargotec.

Cumberland is developing another Land Rover-based unit using a specially designed Socage boom which it is hoping to show at Bauma next month. It is also in the process of developing three Iveco-based aerial lifts - a 13.5 metre articulated, a 16 metre telescopic and a 20 metre double riser articulated models.

CTE delivers its largest lift

CTE has delivered its first 62 metre B-Lift 620HR to Rome-based Tecnoalt and Elevateur both of which are divisions of Venpa3.

The 620HR can be mounted on a four-axle 32 tonne truck and is equipped with a five section main boom plus three section telescopic jib, which is controlled by an electronic management system. Overall length is just under 11.7 metres. Maximum outreach is 35 metres with the main boom horizontal, but a more practical 29 metres is available at up to 43 metres of height

The machine's electronic management system automatically measures outrigger spread and the load in the platform and adjusts maximum outreach to suit.

The first CTE B-Lift 620HR delivered to Tecnoalt and Elevateur in Rome.



Specialist IT solutions for the rental industry

"inspHire gives us full control of our business"



HigherAccess Paul Hyde - HigherAccess

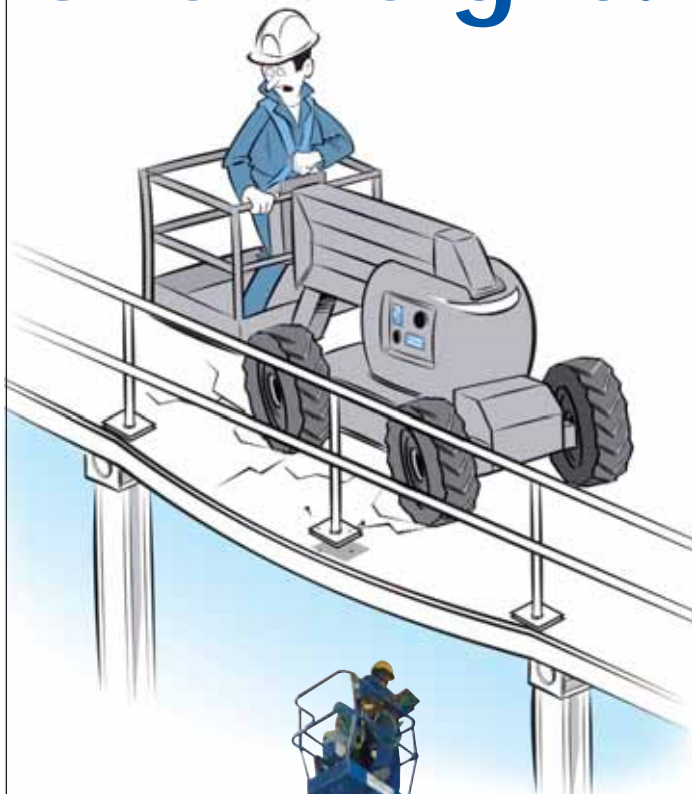
"inspHire allows us to have an immediate handle on what is happening within the business in an easy to access format. We cannot rate inspHire highly enough, we have no hesitation in recommending both inspHire the company and the product offering"

Whatever the size of your business, inspHire provide hire management software solutions that will deliver proven results. Contact us today and become inspHired.

0800 634 0600
hello@inspHire.com
www.inspHire.com



Feeling Overweight?



Visit
UpRight
at Bauma 2010
Stand F11/1103/2
Outdoor Area

Lighten the load with the **UpRight AB38**

- Best-in-class
13m working height
& 6.5m outreach
- Lightweight with standard
non-marking tyres
- Powerful, direct
electric drive for
excellent battery life

the **UpRight**
alternative

www.upright.com



The thank you ceremony
between Kobelco and Sin Heng Heavy Machinery

A century for Sin Heng

Singapore-based Sin Heng Heavy Machinery, one of the regions largest crane companies, has taken delivery of its 100th Kobelco crawler crane. The milestone was celebrated with a visit to the Kobelco plant in Okubo (Hyogo) Japan, for a joint celebration. Sin Heng purchased its first Kobelco crawler crane in 2004 and since then has purchased more than 100 units, including a large number of the 250 tonne CKE2500s and 7250s, 180 tonne CKE1800s and 135 tonne CKE1350s.

30 years with JLG

Aerial Platform Hire of Ireland celebrated 30 years as a JLG dealer during a visit from JLG president Craig Paylor. Paylor and members of his management team met up with Nicholas Davin, Aerial's owner, to raise a toast to the last 30 years, while looking forward to the future.

Davin founded the business in January 1980 and soon started selling and then renting JLG products. The company is probably the longest serving JLG dealer in Europe.

"JLG and APH have been working together for three decades and it has been a pleasure to watch both our businesses grow and our relationship strengthen," said Paylor. "Over the years, the company has evolved into a high-calibre, customer-focused equipment rental company and JLG thanks it for all these years of support and success."

Nicholas Davin, owner of Aerial Platform Hire (L) with JLG president Craig Paylor.



Lifterz Acquires C&G Platforms

UK-based access rental company, Lifterz has acquired C&G Platforms from its owners Catherine and Graham Campbell. Campbell founded C&G 23 years ago as a Genie aluminium access dealer. Today it covers service and repairs, including a larger number of service contracts and brokers platform rental and training. The acquisition adds no additional staff, premises or fleet to Lifterz and is driven by Campbell's wish to start "slowing down a little". He joined the access industry in 1967 as a sales manager with John Rusling.

Richard Short of Penny Hydraulics (L) with Bill Thorpe of OVL



In for a Penny...

UK-based loader and mini crane manufacturer Penny Hydraulics has appointed Optimum Vehicle Logistics (OVL) of Milwaukee and Dubai as its full product range distributor for the Middle East and Africa. OVL supplies parts and services to operators of commercial and military vehicles and is the authorised source for AM General Humvee parts in the Middle East and Africa.

"There's nothing else like the products made by Penny Hydraulics available in the region," says Bill Thorpe, OVL's sales director. "This is a growing market and we see great potential for providing customers with highly effective solutions to their load handling and other requirements."

Custers goes all electric



Dutch access specialist Custers has unveiled a new all-electric van/truck mounted lift - the Taurus 265-12.5E - based on a Smiths Electric Vehicle Newton truck with lithium power pack. With a working height of 12.5 metres the platform has an outreach of 7.5 metres and 265kg platform capacity. Total GVW is 10 tonnes and the practical driving range is around 100km between charges. The vans also include a number of other environmental features such as bio hydraulic oil.

Custers Taurus 265-12.5E all electric truck mount.

Champagne moment

Gill Riley managing director of GGR - the European master distributor for Unic mini cranes, UK dealer for Galizia and glass handling specialist - is one of four finalists in this year's Veuve Cliquot Business Woman Award. Past winners include Anita Roddick, founder and managing director of the Body Shop and Linda Bennett, founder and managing director of LK Bennett.



Gill Riley

Anti-dumping duties lifted

South Africa has lifted its anti-dumping duties on wire rope manufacturer Bridon International after six and a half years. ITAC's recommendation followed a thorough investigation that found that Bridon had not dumped steel wire rope and that there was no likelihood of future dumping.

It's here! the all new city range

of electric powered platforms from Versalift

- Low emissions
- Virtually silent operation

Access to a greener world



www.versalift.co.uk
email us at: electric@versalift.co.uk



Consider the possibilities...

www.maedacranes.com

Broshuis and Vestas team up

Leading wind turbine company Vestas teamed up with Dutch trailer manufacturer Broshuis to design a better loading and road transport system for its new V112, three megawatt turbine in order to reduce component damage.

Gunnar K. Storgaard Pedersen of Vestas Technology R&D said: "We liked Broshuis' willingness to innovate and think outside the box and it has close ties with wind turbine transport companies that have led to concepts such as the triple trailer and triple wing carrier, the kind of thing we were looking for."

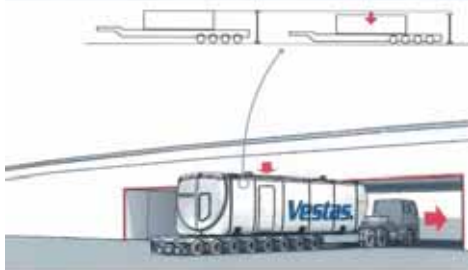
Three concepts were developed, in the first, for nacelles and tower sections, Broshuis decided on an eight axle semi - the V112 transport height is only 3.4 metres - with a recess to support the tower sections. Normally a modular trailer is used for nacelle and the tower sections because of the height restrictions, so the trailer deck lowers to pass under low overhead obstructions. Broshuis also designed a simple jacking system to self-load and unload the nacelle.

Concept two is a 53 metre long blade transporter based on a standard trailer.

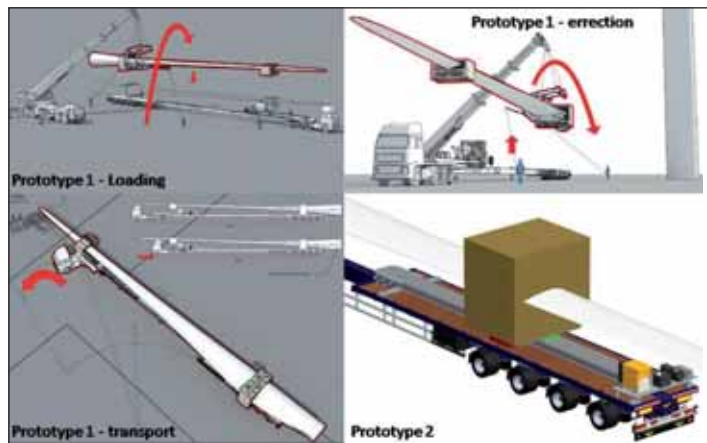
One of the problems with transporting long blades is coping with sharp bends in the road, so for the final concept Vestas and Broshuis looked for a solution that allows the blades to move back and forth whilst on the trailer, in order to allow the maximum front and rear overhang for straight runs, with the ability to slide the blades on the trailer bed to eliminate the overhang for tight turns where obstacles are present. This concept has been tested with a transport contractor and is being refined in order to make it more user friendly and less costly to produce.



The nacelle and tower transport trailer.



The blade transporter includes a sliding device that allows the combined overall length of tractor and trailer to be used.



A lightweight portable crane

A new aluminium portable crane has been developed by Chepstow-based manufacturer Reid Lifting. The Porta-Davit is lightweight enough to be carried easily by two people, lifted into embedded sockets on site and ready to use in minutes. It has been designed with water and waste treatment plants in mind, where pumps, valves and filters often weighing over 500kg, need to be lifted for inspection on a regular basis. Engineers currently have to rig up large machines or build permanent structures to carry out this work.

MD Nick Battersby with the new Porta-Davit.



Record results for Bronto

Full year revenues at Bronto, the Finnish-based truck mounted lift manufacturer rose 10 percent to \$160 million. Order intake fell 40 percent to \$96 million for the year, but picked up in the fourth quarter, reaching \$28.4 million compared to \$26.7 million in the same quarter of 2008.

Operating income for the year was \$19.2 million, an increase of 85 percent on 2008, thanks to the higher sales volumes, lower overheads and higher margins from its new plant expansion which has allowed it to bring a large amount of subcontracted work in-house.

TGM reaches new heights

TGM Wind Services of Abilene, Texas has taken delivery of two new 90 metre Bronto Skylift S-90 HLA truck-mounted aerial lifts, the highest lifts currently working in North America. Mounted on six axle Kimball chassis, the platforms will primarily inspect and maintain wind turbines.

The two lifts have been ordered with 2.4 by one metre, 454kg/1000lbs capacity baskets, maximum outreach is 33 metres. Auto outrigger levelling helps the units set-up and reach full working height in 15 to 20 minutes.



The TGM Wind Services crew with the two new Brontos.



The two new Bronto 90HLA truck mounts.

Skyjack falls

Skyjack full year 2009 revenues fell 63.6 percent to c\$161.3 million, with the fourth quarter particularly weak due in part to a reversal of earlier sales that have been re-categorised as long term rental. As a result, the industrial products division - which is largely Skyjack - posted an operating loss of \$40.5 million compared to a profit of \$36.3 million in 2008.

**Bauma
2010**

Visit us at the
Open-Air Areas 803-807/Hall A4
Stand 111, 19 to 25 April in Munich

Experience the Progress.

LTM mobile cranes from Liebherr.

- Top capacities in all lifting classes
- Long telescopic booms with variable working equipment
- High mobility and short assembly times
- Comprehensive comfort and safety features
- Worldwide customer support by manufacturer



Liebherr-Great Britain Ltd.
Normandy Lane, Stratton Business Park
Biggleswade, SG18 8QB
Phone: (01767) 60 21 00
Fax: (01767) 60 21 10
www.liebherr.com

LIEBHERR

The Group

100 tonne long boom Terex ready to roll

The first images of the new 100 tonne, long-boom Terex AC100/4L have been released. The four axle All Terrain crane features a 59.4 metre six section main boom with a 19 metre bi-fold swingaway extension taking the on-board tip height to 81.7 metres, all of which can be carried within 12 tonne axle weights.

An eight metre lattice insert section can be added between the main boom and extension taking it to 27 metres, all of which can be offset from the main boom nose while offering a maximum tip height of just under 90 metres.

The crane is compact with an overall width of just 2.55 metres combined with a relatively short overall length. It offers four standard outrigger widths in order to provide the maximum versatility for setting up in restricted spaces without sacrificing capacity.



Lavendon posts £48 million loss

2009 revenues at International rental company Lavendon Group fell 13 percent to £226.9 million while it posted a pre-tax loss of £47.8 million, compared to a profit in 2008 of £22.5 million. The company says that revenues and profitability fell in each of its markets except for the Middle East where revenues increased 39 percent to £32.1 million with operating profits up 56 percent to £11.4 million.

Haulotte loses €63 million

Haulotte has confirmed 2009 revenues of €202 million and a pre-tax loss of €63 million compared to a profit of €50.6 million in 2008.

On a positive note, the company has been cash positive and has reduced its net debt by €15 million to €239.7 million. Haulotte says that it expects 2010 to be similar to 2009 and that it will not be paying a dividend.

Mechan takes on mini cranes

Sheffield, UK-based manufacturer Mechan, has signed an exclusive distribution contract with Italian mini crane and mould handling equipment manufacturer Gruniverpal Tranchero for the UK and Irish markets.

Mechan will focus on Gruniverpal's Minidrel B, GB and GIA series mini cranes and Transidrel series mould lifters, both of which incorporate its patented kinematic system providing higher lifting capacities and reach heights.

A Gruniverpal Tranchero pedestrian operated mini crane



Exciting News from

The New Improved Leonardo

A great product made even better! Tough, durable and portable eliminates the need for scaffold, scissor lifts and push-around units.



And work just became fun again...

BRAVI PLATFORMS

Bauma
2010

SEE US AT BAUMA
Area Outdoor F11
Stand 1104/12

The New LUI 460

Up to 6.62mt Working Height,
with dual deck extension and 280 Kg unrestricted capacity!
The new LUI 460 is ruggedly built and durable,
while maintaining a high degree of mobility.



New Caddy

Stock picking made easy!



www.braviisol.com

BRAVIISOL divisione meccanica srl
S.S. Adriatica, 16 Km 314,600 - 60022 Castelfidardo (AN) Italy
tel. +39.071.7819090 - fax +39.071.7819355

- UK-based **Kier Plant** has promoted **Peter Barrett** to the role of operations director.



Peter Barrett

- Finnish-based **Ramirent** has acquired the **Hyrmaskiner group** which trades as **Hyrmaskiner Tidermans** in central Sweden.

- US-based **H&E Equipment** has reported its 2009 results, revenues are down 37% with a loss of \$18 million.

- Wordsworth Holdings** the construction equipment manufacturer owned by **Duncan Wordsworth** has called in the administrators.

- UK-based self erecting tower crane rental company **R&B Mantis**, has closed and is being liquidated. Irish based **Mantis cranes** which has a base in the north of England, acquired some of the assets and employed **Doug Rose** of R&B.

- UK-based rental company **HSS** has signed a distribution agreement with **JLG** for its Liftpod portable lift in the UK.

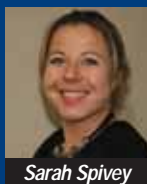


- International rental company, **Ramirent** has adopted a new brand identity including a new Rami man.

- United Rentals** has combined its East and West field operations for general and aerial lift rental operations under the leadership of senior vice president **Matt Flannery**.

- US rental company **RSC** has appointed **Juan Corsillo** as senior vice president, sales, marketing and corporate operations.

- US crawler crane rental company **Essex crane** has reported 2009 revenues down 39% while remaining profitable, it also says that order intake is improving.



Sarah Spivey

- Modulift**, the modular spreader beam company has appointed **Sarah Spivey** as managing director.

- Feliciano Gentilini** has joined Italian crane and access distributor, rental company and manufacturer **Leader** as sales director for Italy.

- Jimmy Lomma**, owner of **New York Crane & Equipment** and **Lomma crane** and one of his mechanics have been charged with manslaughter following the collapse of a tower crane in New York City.

- Haulotte** has appointed **Michael Kuharik** as its zone manager for North America, he takes over the role from **Jeff Ott** who is leaving the business.

- George Reid** of UK-based **Kingfisher Access** has died suddenly after a short illness, he was 56.

- Ontario's minister of Labour is charging **Millennium Crane**, its owner **David Selvers** and crane operator **Anthony Vanderloo**, with criminal negligence for a fatal accident in 2009.

- Merlo** chief executive **Amilcare Merlo** announced that his daughter **Silvia**, would be taking a more significant role in the company and represents the family's future in the business.



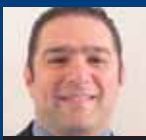
Amilcare Merlo with daughter Silvia

- Cramo** has published its 2009 results which show a loss of €34.9 million on revenues down 23%.

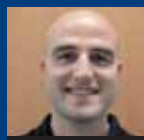
- UK-based rental company **Hi-Reach Access** has gained a further **Achilles** quality accreditation.

- Aerial lift manufacturer **Ruthmann** has appointed **Nico Krekeler** as construction and development manager

- UK-based rental company **Peter Douglass Platforms** has purchased two new Multitel truck mounted lifts.



Sharbel Kordahi



Shea Stimac

- Terex AWP/Genie** has appointed **Sharbel Kordahi** as regional sales manager for the Middle East and Southern Africa. And **Shea Stimac** as territory sales manager, Middle East and Southern Africa.

- Singapore based crane company **Tat Hong**, has introduced a new management structure for its operations.

- Hertz Equipment Rental** has reported full year revenues down 33% on its numbers for 2008.

- Italian telehandler manufacturer **Merlo** said that revenues fell 20 percent in 2009 to €315 million with telehandlers now representing between 75 and 80 percent of total volume,

- UK Tool Hire** of Ilkeston, England has joined the **Access Alliance** of independent regional rental companies.

- Zenith** sealed batteries and chargers has appointed **George Jansen** as its sales director for Europe.



George Jansen

- Aerial lift manufacturer **Isoli** has appointed Barcelona based **Transgruas** as its distributor for Spain.

- Ramirent** has reported an improvement in quarterly profitability while revenues for the year dipped 28%.

- JLG** has promoted **Andrew Satterley** to vice president - sales and marketing for the Asia Pacific region.



Andrew Satterley

- Unic Cranes Europe** has appointed **PPK Management & Industrie** service as its distributor for Austria.

- Palfinger** has released its full results for 2009, with revenues down 36 percent and a pre-tax loss of €11.8 million compared to a profit of €63.9 million in 2008. It is now back in profit and predicts a 10% revenue improvement for 2010.

- Manitowoc** has appointed **Ingo Schiller** as senior vice president of sales and marketing for North America and **Bruce Buchan** as senior vice president of sales and marketing for the company's Latin American organisation.



Bruce Buchan

- Ashtead**, owner of **Sunbelt** in the USA and **A Plant** in the UK has reported nine month revenues down 28%.



Ingo Schiller

- Antwerp-based **Euro Rent** has taken delivery of a new **GSR 200** truck mounted lift with Mercedes Blue Efficiency.

- Australian regulators** have published interim safety device requirements for aerial work platforms that include overload systems from 2011.

- Finning International** has issued its 2009 results and says that it may consider selling **Hewden**, its UK rental business.



Alec Ullmer

- UK-based rental company **AFI** has appointed **Alec Ullmer** to a new role responsible for two of Europe's largest sites.

- Manitowoc** has appointed **John Kennedy** as vice president of sales and marketing its crawler crane product line and **Allen Kadow** as director of marketing for Manitowoc in Latin America.



John Kennedy



Allen Kadow

- The **Bronto Arctic challenge** has set off for its trek across Finnish Lapland the participants which include **Jan Denks** and **Ian James** of Bronto are hoping that industry peopled will sponsor them by contributing to the Alzheimer charity, see the story on **Vertikal.Net** for a link to the charity's donation website.



See www.vertikal.net news archive for full versions of all these stories