

TVH goes for Gunco/HDW

Belgian-based forklift replacement parts specialist TVH has agreed in principle to acquire all, or most of the PON crane and access related holdings. This includes Gunco, one of Holland's leading access, fork truck and telehandler rental companies and HDW, the Genie distributor which also handles Teupen, Isoli, and Unic mini cranes. The deal will include all European operations including Gunco Holland, Belgium and Luxembourg, Statech in the Czech Republic, HDW and Milcon. The US operations that report through Gunco will be retained by PON. The deal was agreed on or around February 17th and as we go to press has not, as far as we know, been completed.



MEC Crossover

Californian-based aerial lift manufacturer MEC will launch a new Crossover scissor lift that will combine the benefits of an electric slab mini scissor with 26 and 32ft platform heights with the ability to work outdoors on gravel, grass or moderately poor ground. The new model has a choice of platforms, including one with a built-in glass/sheet material rack and one that extends beyond the machines overall width on one side, in order to get close up to a wall. More details in the Conexpo Stop Press on page 27.

Big Sarens crane on test

Sarens new 3,250 tonne SG120 heavy lift crane is now built, erected and on test. The massive 120,000 tonne/metre heavy-lift ringer crane was photographed taking a 625 tonne test load out to 120 metres radius on its 130 metre main boom – a 125 percent overload test lift. The new crane has an impressive capability and will meet all current crane regulations and standards, including EN13000.



The massive Sarens SG120 takes 625 tonnes out to 120 metres

APS acquires Height For Hire

UK-based access specialist APS (Access Platform Sales) has acquired the assets and business of Huntingdon-based access rental company Height For Hire. No details of the transaction have been disclosed. The agreement follows the retirement of Malcolm Brown of Height For Hire after 32 years in the business. APS which is also based in Huntingdon will merge its Blantyre rental operation in Scotland with that of Height For Hire, while adding to the two fleets in order to balance the product range. Height for Hire, which has no connections with the Irish-based business of the same name, has a fleet of truck and van mounted lifts along with a few small booms and scissors, while APS Scotland runs a fleet of around 70 spider and push around lifts. The company is also planning to open a satellite rental operation in Biggin Hill, Kent later this year.

Vertikal news on the move

Vertikal.net - the crane, telehandler and access web portal - has released a mobile version of its news service. The sites web designers have developed an easy to use quick to load format that works well for all smart phone systems – including the i-phone, Android and Blackberry, without the need to download an app. The site automatically detects a mobile device and switches to the mobile format, while allowing those who prefer to opt for the full site and database with a single click.

The mobile version is very much a work in progress with the first update planned next month to incorporate reader preferences and feedback. www.vertikal.net



Major fleet renewal for Prangl

Austrian crane and access company Prangl has announced a €30 million investment in new cranes and equipment. The company says that having recently completed a €15 million investment in new aerial lifts and telehandlers it is now looking to replace a further portion of its fleet in order to keep the average age down and adapt to changing market demands. The announcement came after the company reported a 15 percent increase in revenues for the first half of 2010/11.





(L-R) Bernd Rechtsteiner of Liebherr with Elias and Andreas Soulis, Christoph Kleiner of Liebherr and Yiannis Liakopoulos of Liakopoulos Engineering

1,200 tonner for Cyprus

Larnaca, Cyprus-based crane and heavy haulage company A. Soulis Enterprises has taken delivery of its new 1,200 tonne Liebherr LTM 11200-9.1 at Liebherr's production plant in Ehingen, Germany. The crane will be used primarily to service the growing number of wind power farms in Greece.

TIL to launch new cranes

Indian-based crane manufacturer TIL (Tractors India Ltd) says that the major expansion to its production capacity is well underway and that it will introduce two new cranes during the year. The company, which is a long-term Grove licensee, says that it will launch a new local market 70 tonne truck crane to compete with Chinese imports and a small 10 tonne crane which could become its largest product in unit terms. Current production capacity is claimed to be 200 cranes a year, rising to around 400 units after the expansion is completed.

Bus hits boom lift

A 31 year old man was severely injured near St Pancras station in central London earlier this month after a double decker bus hit the platform of the telescopic boom lift he was working from. The man was catapulted out of the platform and fell into the path of the number 45 bus which is said to have dragged him a considerable distance before coming to a rest. The boom lift, which was working at the front of the Midland Grand Hotel St Pancras which has been undergoing a major refurbishment, was hardly damaged and remained stable. We can only assume that the operator was not wearing a harness.

The accident is very similar to the fatal accident in Manchester in September 2007 that triggered the establishment of IPAF's worldwide Clunk Click campaign to encourage the use of harnesses and short lanyards in boom lifts. Fortunately the man in this accident was reported to be in stable condition and recovering a few days after the accident.



ReachMaster name comes back

US-based Skako Inc, which prior to July was ReachMaster Inc, is bringing back the ReachMaster name by popular demand. The company will use the name as a brand, for its big Falcon atrium lifts along the lines 'Reachmaster by Skako lift'. The company will retain its corporate name Skako Lift, Inc. and will also use its Denka brand. In separate news the company has also been appointed as the BlueLift distributor for the Americas. The official launch was at the recent ARA show in Las Vegas.

(L-R) Ebbe Christensen of Skako Inc, Gianni Marti and Gianpiero Marti of BlueLift and Brian Falck Schmidt of Skako, at the BlueLift plant.



Log handling reach stacker from Liebherr

Liebherr has introduced a log handling version of its LRS 645 reach stacker for large lumber yards. The LRS 645 LH Log Handler is designed to optimise wood yard storage space and wood yard maintenance costs, says Liebherr. It is particularly targeted at pulp and paper mills, chipboard or saw mills and wood terminals. The LRS645LH has a maximum lifting capacity of 30 tonnes at an outreach of up to 5.5 metres. The unit can lift up to a 12 metre height and extend to 10 metres radius, but can also lift logs from six metres below ground level. Its grab can be rotated through 360 degrees as well as pivoting forwards, backwards and sideways. The first unit has been delivered to Szepianiak, a wood handling specialist operating paper and saw mills in Finland.



The Liebherr LRS 645 LH Log Handler

Change again at Skyjack

Skyjack is once again without a president, following the departure last month of Ken Myers. Myers moved into the role in October, replacing Steve Shaughnessy. He was previously group president of Linmar's powertrain division, having joined the company in 2002. Linmar is not saying a great deal about the departure which we understand occurred around mid February and is unrelated to anything that happened during his tenure at Skyjack. The company is currently being run by the management team with the support of Linmar's corporate office. The company has said that it will not rush into appointing a replacement.

Linden Comansa launches new Luffers

Linden Comansa has announced the launch of two new luffing-jib tower cranes, the LCL 310 and LCL 280 which, along with the LCL 190 unveiled at Bauma 2010, form a new family of luffing-jib tower cranes which will be completed later this summer with the launch the LCL 165.

The designs are modular with most jib sections being interchangeable between the cranes. Attention has been paid to ease of erection and transportation, and features include; a front mounted hoist, a second emergency brake for the luffing mechanism and a counter jib mounted

electrical cabinet, helping keep the installation weights and the slewing radius of the counter-jib to a minimum. Each of the two cranes comes in three versions with 12, 18 or 24 tonnes maximum capacity. All offer a 60 metre maximum jib length, with between 2.6 and 3.5

tonnes capacity at the jib tip and 53 to 57 metre free standing heights. A new longer Panoramic XL cab has also been tested on the LCL prototypes and will be available as an option.

The Comansa LCL310



New flat top from Terex

Terex Cranes has announced a new 300 tonne/metre CTT 321 flat top tower crane. Built in Fontanafredda, Italy, it has a maximum capacity of 16 tonnes and maximum jib length of 75 metres.

Designed for ease of installation the new crane has a two-part counter jib for easy transportation. The EVO15 operator's cab features new joystick controls and heating system. Standard equipment includes an anti-sway module, slip-ring protection bar and rods and a device to prevent the pulley rope from jumping the reeving track.

Terex CTT321



Imer Access formed

The Imer group has formed a new division – Imer Access headed by Paolo Pianigiani – bringing together most of its access activities including production, sales and service for Iteco but not the IHlmer spider lifts which remain within the construction division. While Pianigiani takes over as business unit director, he will maintain his current responsibilities which include the group's strategic marketing and coordination of its commercial branches. The new division is based at Pegognaga, Mantua, the home of Iteco. All scissors and self-propelled booms continue to carry the Iteco brand. The Imer Group now includes four production divisions Imer Equipment, Imer Access, Concrete Machinery and Construction Equipment.

Paolo Pianigiani



Plat4ms 4 GT Access

UK-based powered access rental company GT Access has acquired the assets of Hereford-based Plat4ms for an undisclosed sum.

The Plat4ms business will now trade as GTA Plat4ms within the Hereford area with owner Brian Preece joining GT Access as Hereford branch manager. All other staff have been retained. The move takes the GT Access fleet to more than 400 machines operating from Bromsgrove, Gloucester, Telford and now Hereford.

New top end Potain

Potain has added a new 550 tonne/metre tower crane – the MD560B - at the top end of its MD range designed for infrastructure work, such as dams and bridges. The new crane is said to offer better jib tip capacities and load curves in most configurations. When working with an 80 metre jib the 25 tonne MD 560 B can handle 5.4 tonnes at the jib tip, while the 40 tonne version can take 7.5 tonnes to 70 metres. Tie bars are integrated into the counter jib for faster, safer erection and each component has a clearly positioned identification plate. The jib can either be assembled in the air in three separate pieces or on the ground and placed as a single component, depending on available space and the size of the mobile crane. Two prototypes, both 25 tonne models, are working for contractor Dragados on a major expansion to Madrid's Atocha rail terminal. The cranes will stay on the job for 12 months and will eventually reach working heights of around 49 metres.

Potain MD560B in Madrid



New Potain from the East

Manitowoc has started building the new Potain MC 125 quick erect tower crane at its plants in Zhangjiagang, China and Pune in India. The MC 125 is a city-type crane with saddle jib design, incorporating several design innovations including a single-tie jib which can be assembled at ground level and lifted in a single piece. Maximum jib length is 60 metres at which it can lift 1.15 tonnes. Maximum free-standing height is 44 metres and maximum capacity six tonnes. The MC 125 - as with all Asian-made Potain cranes - is designed and manufactured in accordance with FEM standards but will only be available in Asia, South America, the Middle East and Eastern Russia.

Potain MC 125



Nifty and Skyjack for Bella

Bella Access - the new UK based rental company chaired by Gary Smith the founder of Kimberly Access - has purchased a fleet of 33ft platform height Nifty HR12N and 43ft HR15N articulated self-propelled booms as well as a range of Skyjack scissor lifts.

The new company based in Stone, Staffordshire is a joint

venture between Smith and Jason Dalmas. Smith who sold Kimberly in 2007, will oversee the business, while Dalmas will handle the day to day operations as managing director. The company says that the HR12N's and HR15N's were chosen for their compact dimensions, outreach and Bi-Energy power packs.

Smith has spent his working

life in the access industry, starting out with PTP around 30 years ago, joining David Wraith in the 1980's to found Nationwide Access which later became Lavendon and then founding Kimberly with Peter Piekarus in 1994, selling to Ray Ledger in 2007.

The decals go on the new Bella Access machines prior to going out on rent

c&a

news



New harness guide for platforms

A new Best Practice guide covering fall protection for users of aerial work platforms has been issued by the American Rental Association (ARA), the Association of Equipment Manufacturers (AEM), the Associated Equipment Distributors (AED), the International Powered Access Federation (IPAF) and the Scaffold Industry Association (SIA). The publication, entitled 'Statement of Best Practices of Personal Fall Protection Systems for Aerial Work Platform Equipment,' is intended to address confusion and apparent contradictions in the USA over when and in which machines a harness and lanyard are required. In essence it says that when using booms and vehicle mounted lifts a harness must be worn with a short fall restraint lanyard, while they are not normally required in scissor and vertical type lifts.



OSHA regulations and ANSI standards both reference fall protection when using boom lifts.

New best practice telehandler guide

The UK Strategic Forum Plant Safety Group has unveiled its new Best Practice document, 'Safe Use of Telehandlers in Construction', intended to help reduce the risks of accident and injury when working with telehandlers.

The guide highlights the correct way to carry out particular procedures, highlighting them as 'best practice' and effectively

outlaws some current practices, such as the use of non-integrated work platforms on telehandlers in construction.

The publication is a result of close co-operation between the British Industrial Truck Association, the Construction Plant-hire Association, Merlo, JLG, JCB and the Health & Safety Executive. It is available to download from the CPA website www.cpa.uk.net/p/Telehandlers

New Liftpod launched

JLG has announced a new version of its FS60 1.8 metre platform height LiftPod. The FS60 has a new 762mm wide steel base and has been re-engineered to pass through doorways and into elevators without the need to dismantle. The unit still breaks down into three components for transport and can be powered by a power drill or an optional power pack. The new FS60 will be priced in the USA at under \$2,000. The higher, 2.4 metre platform height FS80 is still available.



The new ANSI version of the JLG FS60 LiftPod

First LG 1750 in Australia

Western Australia-based M Joyce Crane Hire has taken delivery of the first 750 tonne Liebherr LG 1750 lattice boom crane in Australia. Launched at Bauma 2004, the LG 1750 is, according to Liebherr,

the largest truck mounted lattice boomed crane in the world. Joyce ordered the crane with heavy duty boom, luffing jib and derrick boom and is looking at the mining and oil and gas industry.

M Joyce Crane Hire has taken the first Liebherr LG 1750 lattice boom mobile crane in Australia.



Specialist IT solutions for the rental industry

"inspHire is helping us to **increase** our rate of business"



Jason Seddon, Director - Aerial Platforms Ltd

"inspHire CRM has also given us the edge in our telesales department which has seen a lift of new and existing customers conversions up by almost 88% resulting in that department smashing its yearly target!"

Whatever the size of your business, inspHire provide hire management software solutions that will deliver proven results. Contact us today and become inspHired.

0800 634 0600
sales@inspHire.com
www.inspHire.com



It's here! the all new **city** range of electric powered platforms from Versalift

- Low emissions
- Virtually silent operation

Access to
a greener
world



www.versalift.co.uk

email us at: electric@versalift.co.uk

Six axle AC200 for McGovern

Ilkeston, Derbyshire, UK-based McGovern Crane Hire has ordered its largest crane to date - a 200 tonne six axle Terex AC 200-1. The new crane is the 10th Terex for the company since it was founded by Eddie and Tommy McGovern in 1995. The new All Terrain has a 68 metre main boom and on-board system length of 85 metres.

Equipping the unit with six axles instead of the usual five did not involve an increase in the overall length of the crane, but allows McGovern to travel with 30 tonnes of counterweight instead of the usual 16 tonnes, thus reducing transport costs and improving overall profitability.

Tommy McGovern said: "The AC 200-1 is an extremely compact crane - a full metre shorter than some competitors - giving it a distinct advantage when working in confined areas. Where access is tight, a metre can sometimes make all the difference."



UK-based McGovern has purchased a 200 tonne Terex AC200 with six axle carrier.

Coast Crane drops Manitowoc/Grove

Coast Crane will no longer serve as a distributor for new Manitowoc crawler and Grove telescopic cranes, but will retain its Potain tower crane distributorship, in the western US, Alaska, Hawaii and Guam. Coast, which is now a wholly owned subsidiary of Essex Crane, will become a national key account for all Manitowoc Crane group products, allowing it to continue to purchase new equipment and parts for its rental fleet directly from the manufacturer. This new arrangement is similar to the relationship that has existed between Essex Crane and Manitowoc for the past 15 years.



Manitowoc unveils Brazilian plans



Manitowoc is planning a new production facility in Brazil

Manitowoc Cranes has confirmed that it will build its first South American production facility in Paso Fundo, in Southern Brazil. Construction of the 25,000 square metre plant is expected to begin 60 days

after final approval by local government officials. Upon completion, it is expected to generate more than 300 jobs.

The initial focus of the factory will be the production of mobile telescopic cranes, possibly of a new design. Manitowoc says that it expects the first cranes will come off the production line around 15 months after construction begins. Manitowoc will maintain its current Brazilian sales and service office in Sao Paulo.

At least five Land Rover-based aerial work platforms have suffered 'catastrophic' structural chassis failure recently. The Gardner Denver installations - officially approved and signed off by Land Rover - were all being used in the UK by Fountains Forestry, working on a contract for Central Networks. The chassis on the units concerned are all said to have broken just behind the cab, splitting the machine in half.

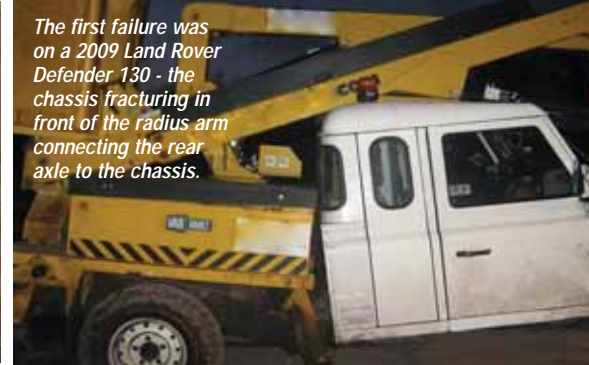
Initial reports suggested that the problem might have been caused by an extended Overland cab pushing the platform further back from the engine, however there are reports of other platforms with regular cabs having also failed, seeming to rule out this as a possible cause. The first failure was on a 2009 Land Rover Defender 130 - the machine's two chassis rails that carry the vehicle's body, engine and transmission fractured. Fortunately the incident occurred



The chassis failure with the rear radius arm fixing to the bottom right.

as the vehicle was being parked and no-one was injured. The driver heard a loud bang and the platform's boom came down onto the roof of the cab.

The remaining four units on the job were inspected and revealed hairline fractures on the Defender 130s in the same place as the first failure. Neither Gardner Denver nor Land Rover has yet issued any statement and neither will take our calls or respond to our emails.



The first failure was on a 2009 Land Rover Defender 130 - the chassis fracturing in front of the radius arm connecting the rear axle to the chassis.

Demag acquires UK software company

Overhead and port crane manufacturer Demag Cranes has acquired DB Controls of Doncaster, South Yorkshire in the UK, an accredited software developer and consultant for bulk materials automation. DB's customers include, amongst others port and terminal operators in the UK, Asia and Africa. Following the acquisition it will trade exclusively under the brand DBIS. Demag's chief operating officer Thomas H. Hagen, said: "DB Controls' consulting and software capabilities combined with their automation skills are at the upper end of the services pyramid. This will enable us to strengthen our position in the bulk materials handling market considerably."

Smith's share sale raises £5 million for Tanfield

Tanfield associate Smith Electric Vehicles US has completed a private placing, raising \$58 million of new equity. As a result of the placing, Tanfield, which owns Snorkel, now holds 32.2 percent of Smith's shares and can exercise its option to receive a \$5 million pre-payment on the deferred consideration due from Smiths US following the sale of the Smith Electric Vehicles (UK) business last year.

New lightweight self-propelled platform

Italian aerial lift manufacturer Faraone has launched the PK50S - a new 10ft/three metre platform height self-propelled lift that weighs less than 300kg. The new model is a combination of the company's aluminium mast and all alloy platform. The ultra compact unit measures just 750 mm wide by a metre long and weighs just 290kg - lower than some push around lifts. One trade-off for this low weight is that drive is cut-out above two metres. The new lift includes wheelchair drive and steer technology and incorporates passive pothole/kerb protection. The



The new PK50S has a three metre platform height and weighs less than 300kg.



Entry is via a clamshell gate

platform capacity is one man/200kg and is available with a special stock picking platform. The company has also unveiled a push around version of the same lift with short stubby rolling outriggers - the PK53 - which boasts the same platform capacity, same five metre working height but weighs just 160kg.



Powered access: the latest industry figures

Order your copy of the *IPAF US or European Powered Access Rental Reports 2011* now - and find out what's really happening in the access rental industry.

Visit: www.ipaf.org/reports
Call: +44 (0)15395 66700



The world authority in powered access

Cargotec orders jump

Cargotec, owner of Hiab loader cranes and Kalmar reach stackers, saw order intake for its Industrial and Terminal division jump 52 percent in the fourth quarter.

Full year revenues of €1.53 billion were down three percent on 2009, while order intake improved 34 percent to €1.69 billion. Operating income was €37.1 million compared to a loss in 2009 of €10.3 million. The company expects revenue growth in 2011 of 10 percent.

Manitowoc returns to growth

Manitowoc Crane has reported its full year results which show a return to growth in the fourth quarter.



Revenues for the quarter were up 2.3 percent on last year to \$491.4 million, while order intake climbed 28 percent to \$572 million. Revenues for the full year were down 23 percent to \$1.75 billion, while operating profit was \$89.7 million compared to \$145 in 2009. However profits in the fourth quarter were \$30.4 million up 66 percent on 2009.

Manitou cuts losses

Manitou has confirmed that revenues for 2010 were up 23 percent to €838 million, of which telehandler and RT fork trucks sales were up 21 percent to €586 million.

All regions showed growth with North America the strongest. The company posted a pre-tax loss for the year of €10.65 million, compared to a loss of €163.5 million in 2009. Net debt at the end of December was €139 million, 43 percent lower than a year ago. The company says that current trading suggests that it will achieve 20 percent growth in 2011.



Genie back in the black

Terex AWP has reported a 66 percent jump in fourth quarter revenues to \$340 million, while posting an operating profit for the period of \$11.7 million compared to a loss of \$32.6 million last year. Total revenues for the year were up 28 percent to \$1.07 billion with an operating profit of \$3.4 million compared to a loss of \$154 million in 2009.

Haulotte up 35%



Haulotte's fourth quarter revenues increased 35 percent to €72.5 million, while the full year ended 24 percent up on 2009 at €250 million, of which €186.3 million was sales of equipment, 34 percent more than in 2009.

€37.2 million was rental – up 17 percent – leaving €26.5 for product support/services which is down 14 percent on 2009. In spite of the improvement, Haulotte still expects to report a loss for 2010 when it publishes its full results later in the year, possibly returning to profit in 2011.

Record start for Ruthmann

German truck mounted lift manufacturer Ruthmann has reported a record start to 2011 in terms of order intake, and says that it finished 2010 with a strong upward trend and total revenues of €50 million.

Lavendon returns to profit,

Europe's largest powered access rental company has reported flat revenues of £225.4 million in 2010, while underlying pre-tax profits dropped just over five percent to £13.9 million. When exceptional costs are included, the company posted a profit of £10.7 million compared to a loss last year of £47.8 million. The company cut its net debt load from £182.1 million to £140.3 million.



HSS up 19%

UK-based rental company HSS has reported a strong

improvement for 2010 with fourth quarter revenues up 19 percent to £44.5 million with an EBITDA of £9.4 million, 48 percent higher than in 2009. Full year revenues were up 15 percent to £171 million, while EBITDA climbed 33 percent to £39.1 million.



Experience a new level of service

CARGOTEC
HIAB · KALMAR · MACGREGOR

Pick up at Terex Crane

Terex Crane revenues in the fourth quarter climbed 1.8 percent to \$549 million while operating income was almost halved to \$15.7 million. Order intake improved across the business, with the exception of small All-Terrains and tower cranes.

The North American Rough Terrain cranes business saw a sharp increase in orders and shipments as demand rebounded. Revenues for the full year were \$1.78 billion - down six percent on last year with operating income coming in at just a third of last year's levels at \$33.5 million. The port equipment business reported a loss of \$5.4 million as it continued to work through its restructuring plan. The crane order book increased by 15 percent over the quarter but is still almost 20 percent down on the same point in 2009.



Cramo goes positive

Finnish-based international rental company Cramo saw a strong fourth quarter pick up and a return to profitability. Revenues for the full year were €492.1 million, 10.2 percent up on 2009, while pre-tax profits came in at a €4.8 million, compared to a loss of €34.2 million last year.

The fourth quarter was even stronger with revenues climbing 26.8 percent to €146.4 million, which boosted pre-tax profits from a loss in 2009 of €27.5 million to a profit of €8.37 million this year.

Strong fourth quarter for Speedy

Speedy Hire, the UK's largest equipment rental company has issued a very positive interim trading statement saying that in spite of the harsh weather in December revenues for the three months to the end of December climbed 8.8 percent compared the same quarter in 2009, making up for the declines of the previous two quarters.

Positive fourth quarter for Hertz

Hertz Equipment Rental has reported fourth quarter revenues of \$286 million, 4.4 percent higher than for the same quarter last year. Pre-tax profits were \$16.9 million compared to just \$2.8 million in 2009. The full year 2010 results were still negative with revenues down three percent to \$1.07 billion. The pre-tax loss improved however to \$14.6 million compared to a loss of \$20.7 million in 2009.

Palfinger up 29%

Loader crane and access manufacturer Palfinger has confirmed full year revenues of €651.8 million, up 29 percent on last year, with a pre-tax profit of €29.83 million compared to a loss in 2009 of €11.86 million. It anticipates a further 20 percent growth in 2011.



Ramirent up 6%

Finnish-based international rental company Ramirent has reported a 5.7 percent increase in full year revenues to €531 million, keeping the company firmly in position as Europe's second largest equipment rental company. Pre-tax profits for the year were €29.7 million almost four percent higher than 2009. The fourth quarter continued the strong upward trend of the second half, with revenues climbing 19 percent to €150 million while pre-tax profits came in at a solid €11.2 million compared to a loss of €3.6 million in the same period last year. Net debt was cut by almost 15 percent to €176.6 million after allowing for capital expenditure of €62 million.



TRACCESS 230
Working height 23 m
Working outreach 12 m
Capacity 200 kg

CTE S.p.A.

Sales Office

I - 38068 Rovereto (TN)

Tel. +39 0464 485050

Via Caproni, 7 - Z.I.

Fax +39 0464 485099



info@ctelift.com

www.ctelift.com



Put your work above all.

Workspace and capacity. The more you have, the more you can do.

Rely on JLG® scissor lifts to help you run **more efficiently** and be **more productive**.

With large platforms, heavy lifting capacities, exceptional mobility, industry-leading duty cycles and quieter operations, they'll take you farther - getting whomever and whatever you need into the places you need them.

Get the **reach** you need, the **reliability** you want, and the **efficiency** the job calls for. With JLG scissor lifts and the JLG customer service and support team.

JLG. Helping you reach your potential.

- German-based truck mounted lift manufacturer **Ruthmann** has appointed **Helma** as its distributor in Greece.

- Verania Costa Rivas** will join aerial lift producer **Snorkel** as district manager for France, starting in April.



Verania Costa Rivas

- H&E Equipment** revenues jumped 26.8% in the fourth quarter 2010 as utilisation and rental rates improved.

- Hungarian-based **Europelift** has started the year well delivering four new truck mounted lifts in four days.

- Netherlands-based rental company **Lumar** has added two **Hitachi** tracked booms and a **Niftylift** trailer lift to its fleet.

- UK-based boom lift manufacturer **Niftylift** has appointed **Belaruslift** as its distributor for Belarus.



Brian Boeckman

- Brian Boeckman** has been appointed as global product director **JLG**, **SkyTrak**, **Lull**, and **Deutz Fahr** branded telehandlers.

- HSS Hire**, one of the UK's largest rental companies has added **Power Towers** self-propelled Nano SP lifts to its fleet.

- Terex AWP/Genie** has appointed **Tom Saxelby** as vice president, North American sales.



Tom Saxelby

- Brintons Carpets** has acquired a new **Haulotte** Star 6 'Picking' for its operation in Kidderminster, UK.

- Castleford**, UK-based **CAT Access Solutions** has changed its name to **Tracked Spider Solutions**.

- UK-based **Higher Access** has taken delivery of the first 32m **Skako Lift FS320Z**

- Loxam France** has acquired six rental depots in Ile de France and Picardy from **Régis Location**.

- Jeff Ford**, formerly senior manager, marketing communications at **JLG** is now global director, product management for aerial work platforms.



Jeff Ford

- The **HSE** in the UK is clamping down on unsafe working at height on construction sites.

- Ritchie Bros** - the used equipment auctioneer - has reported that gross auction sales fell 6% in 2010.

- Manitowoc** has appointed **Western Pacific Cranes & Equipment** as distributor **Manitowoc**, **Grove** and **National Crane**.

- UK-based powered access rental company, **Horizon Platforms** has appointed **Lindsay Tarrant** as finance director.



Lindsay Tarrant

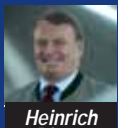
- WorkSafeBC** halved one fine and cancelled another for a fatal crane accident in Vancouver in 2008.

- Finnish-based **Konecranes** has launched a new **Boxrunner** straddle carrier.

- Hubert Palfinger**, 68 and **Alexander Exner**, 63, have announced that they are retiring from as directors of **Palfinger** at the end of March... The supervisory board will propose **Hannes Palfinger** and **Heinrich Dieter Kiener** to replace them as directors.



Hannes Palfinger



Heinrich Dieter Kiener

- German-based overload system producer **Moba**, has acquired a 25 percent stake in **Novatron** of Tampere, Finland.

- Winners Access** has become the first UK company to take delivery of the new **Multitel MX270EX** truck mounted lift.



Frank Hafemann

- Moba** has appointed **Frank Hafemann** as dealer channel manager with responsibility for distribution.

- IPS**, the UK-based International supplier of replacement parts has appointed **Tower Rent** as its distributor in Turkey.

- Spreader beam company **Modulift** has appointed **CEA Projects** as its distributor for South East Asia & Australia.

- US-based **SafeWorks** has appointed **Ruben Bake** as vice president of **SafeWorks International**, based in Antwerp, Belgium.



Ruben Bake

- UK-based **P G Platforms** has selected the **CTE Zed 21J** truck mounted lift to top its 3.5 tonne fleet.

- Las Vegas-based **Ahern Rentals** has said that it missed a \$10.9 million interest payment as it seeks to renegotiate its loans.

- Equipment Auction house **Iron Planet** has opened a new operation in the Middle East based in Dubai, UAE.

- Braxton Snyder**, manager worldwide sales at **Link-Belt Cranes**, died on February 20, in Lexington, Kentucky, aged 62.



Braxton Snyder

- A judge has upheld criminal manslaughter charges against **New York Crane** owner **James Lomma** and mechanic **Tibor Varganyi**.

- UK-based **Bucks Access Rentals** has added the first spider lift to its fleet, a 16 metre **Easylift R160**.

- Finland's largest rail contractor **VR Track** has signed a two year rental supply agreement with **Ramirent**.

- Maye Houck** has been promoted to senior marketing manager for **JLG** products in the Americas and **Caterpillar** telehandlers worldwide.



Maye Houck

- Hull, UK-based **Compact Lifting Equipment** has added more 19ft **Skyjack** scissors lifts to its rental fleet.

- Finnish-based **Cramo** has bought out **Cramo Management** - a holding company owned by its top executives.

- UK-based **Vp** - owner of telehandler company **UK Forks** - has appointed **Allison Bainbridge** as group finance director.

- French-based aerial lift manufacturer **ATN** has appointed **Dominique Lacombe** as sales manager.



Dominique Lacombe

- Canadian-based distributor **Strongco** has acquired Maine-based, **Chadwick-BaRoss** for around \$11.5 million.

- Singapore-based **Tat Hong** has posted its third quarter results which show falling profits on higher revenues.

- Scottish-based crawler crane hirer **Weldex** has made it into the UK 100 fastest growing private equity supported companies.

- JLG** and **Genie** have both warned that increasing material prices may force it them implement price increases in the near future.

- US-based rental company **RSC** has reported 2010 results which show a strong improvement in the fourth quarter.

- Italian aerial lift and scaffold manufacturer **Faraone** has appointed **PowerLift** as its new UK distributor.

- Lars-Petter Godenhjelm** owner of **DinoLift** and past president of **IPAF** passed away on Tuesday February 8th aged 70.



Lars-Petter Godenhjelm

- Terex AWP** has promoted **Christophe Rousseau** to regional sales manager for Southern Europe, Northern and Central Africa.



Christophe Rousseau

- Genie** will open a new replacement parts distribution centre in Moscow, Russia, next month.

- Glyn Goodwin** has joined **Skyjack's** European sales team handling used equipment.

- Italian spider lift manufacturer **Bluelift** has appointed **Forent** as its distributor for the Republic of Belarus.

- TNT Crane & Rigging** of Texas has acquired the San Antonio and Houston cranes and assets of **Louisiana Crane**.

- JCB** has confirmed a £14 million order for 350 machines to UK based **H. E. Services**.

- Genie** has appointed **Matthew Skipworth** to the new position of national account manager for the UK.



Matthew Skipworth

- French-based aerial lift manufacturer **ATN** has appointed **Hocap** as its distributor for The Netherlands.

- JLG** has appointed two senior vice presidents for sales, market development and customer support - **Tim Morris** for the Americas and **Rick Alton** International.



Rick Alton



Tim Morris

- UK-based **Blade Access Specialists** is now fully registered on the **Achilles** database for the supply of access equipment.

- Manitou** has approved a restructuring of the **Braud** family holding that increases and stabilises family control.

- Power Tower** has introduced two new Nano self-propelled lifts, the **Nano SP Zero** and **Nano SP Plus**. See page 42

- Sabine Le Roy** owner of Belgian based **Heli** is one of three finalists in a national award for women in business.

- Manitowoc** is restructuring its European sales operations following the departure of **Frans Vanwinkel**. His duties will be split between **Christophe Simoncelli**, vice-president sales, Western Europe,



Christophe Simoncelli

- Klaus Kroeppel**, vice-president sales, Central & Eastern Europe and **David Semple**, vice-president sales, Middle-East & Africa.



Klaus Kroeppel



David Semple

- US-based **Ring Power Crane** has added the **Badger** range of Rough Terrain cranes to its crane product line.

- UK-based **Midland Truck Mounts** has bought its first ever new platform - a **Multitel MX225**.

- Access Parts & Hire UK Ltd** laid off its staff and closed its **Oswestry** location.

- Tower crane specialist **Wolffkran** has opened a new full service operation in **Lund**, southern Sweden.

- Italian-based truck mounted lift manufacturer **Socage** has appointed **Exan** as its dealer in Estonia.

- Devon**, UK-based **Spence Crane Hire** has added a new, 55 tonne **Liebherr** LTM 1055-3.2 to its fleet.



See www.vertikal.net news archive for full versions of all these stories