

# United acquires RSC

United Rentals, the world's largest equipment rental company, has reached an agreement to acquire North America's second largest rental company RSC. The deal is a cash-and-stock transaction valuing RSC at \$18 a share for a total enterprise value of \$4.2 billion, including \$2.3 billion of net debt.

RSC shareholders will receive \$10.80 in cash plus one United Rentals share for every 3.59 RSC shares they hold, giving RSC shareholders a stake of around 30 percent in the merged company. The deal between the world's two largest equipment rental companies, creates a combined business likely to have revenues this year in the region of \$4 billion. The deal – subject to numerous conditions and approvals - is expected to close in the first half of 2012.

## Lavendon rebrands in the UK

Europe's largest powered access rental company Lavendon, has announced that it is consolidating all of its UK operations under the Nationwide Platforms brand. The 'go-live' date for the changeover is February 1st, however the transition has already started. The company currently operates under three brands – Panther, EPL-Skylift and Nationwide Platforms.

The truck mounted lift business, currently operated under the EPL Skylift banner, will continue to be run separately in recognition of the differences between operated and non-operator rental and will be known as the 'Specialist Vehicle Division' of Nationwide Platforms (see interview with Lavendon's Rob McMeeking on page 42).



Three brands have now become Nationwide Platforms.

## MSD cranes restructures

UK-based crane rental group MSD has restructured its business with MSD Cranes & Equipment Ltd going into liquidation.

Since July 2011 the holding company for the group has been MSD Industrial, following a capital injection by the Leoni Sceti Group. MSD Cranes & Equipment is one of two operating subsidiaries, along with MSD (Darlington) Ltd. The group operates from two locations, one in Darlington, County



Durham and one in Gateshead, Tyne & Wear and runs a fleet of around 30 cranes with capacities of up to 500 tonnes.

MSD operates out of Teeside and Tyneside.

## Counterweight programming debate follows Tate incident

Early last month a 110 tonne All Terrain crane overturned at London's Tate Modern TM2 construction project, fortunately no one was hurt in the incident.

The crane - a five axle Tadano Faun ATF110G owned and operated by Baldwins Crane Hire - was lifting a steel beam when it lost stability. Reports suggest that the crane was overloaded. In early January McGee Demolition, which had hired the crane, issued a statement and guidance for use by its site staff, subcontractors and suppliers.

The statement said that while the investigation is still continuing, human error appears to be the main contributory factor. It adds: "The purpose of this alert is to raise awareness on a matter relating to the load moment device. Our initial investigations have revealed that there is no failsafe device fitted, to capture wrongly entered data. As a consequence if the wrong counterweight detail is entered and exceeds that which has been actually installed, the audible and visual warning devices will not activate."

"We have been in contact with several crane manufacturers and are alarmed to discover that this would appear common place. To ensure that the crane operator enters the correct codes into the load moment device to identify the actual counterweight fitted, it may be necessary to amend your procedures i.e. pre-use check sheets to include a provision for secondary sign off."

"We intend to discuss with the HSE changes required in the regulations to enforce the requirement for ballast sensors on all mobile cranes going forward."



The crane tipped but came to rest on some steelwork.

## €40 million order for Liebherr

Dubai-based Al Faris Equipment Rentals has ordered 47 Liebherr cranes of between 60 and 750 tonnes, in a deal worth more than €40 million. The order is due for completion by the end of 2012. Liebherr says it expects another order early next year for 2013. The additions will be a significant addition to the Al Faris fleet which already includes 180 Liebherr cranes.

The majority of the cranes are 95 tonne five axle LTM 1095-5.1 and 100 tonne LTM 1100-5.2. It also includes a considerable number of LTR 1060 and LTR 1100 telescopic crawler cranes.



Three of the LTR1060 and LTR1100 crawlers delivered to Al Faris.

# Marchetti appoints UK / Ireland dealer

Italian crane manufacturer Marchetti has appointed AGD Equipment as its UK and Ireland distributor for its range of telescopic crawler, truck and All Terrain cranes. Stratford-upon-Avon based AGD is a family-owned construction equipment sales, rental and service company formed more than 30 years ago, specialising in crawler cranes and piling equipment.

The company says that it will be adding two 70 tonne Marchetti Sherpa CW70.42 telescopic crawler cranes with 42 metre booms to its fleet. The company also distributes amongst others IHI crawler cranes, RTG leader rigs and Mait foundation equipment and has a rental fleet of more than 120 units including more than 90 crawler and mini cranes.



*AGD says it will be adding two 70 tonne Marchetti Sherpa CW70.42 telescopic crawler crane with 42 metre boom to its hire fleet early next year*

## Bravi goes smaller

Low-level aerial lift manufacturer Bravisol has introduced a new ultra lightweight push-around lift called the Spin-Go (Spingo is Italian for I push). Based on the company's popular Caddy self-propelled stock picking lift, the Spin-Go offers a platform height of 7.2ft for a working height of 4.2 metres, yet weighs just 230kg all up. The unit is a result of number of major retail Caddy customers asking for a smaller, simpler and less expensive product.

The compact and attractive unit is just 1,155 mm long by 730mm wide and has a stowed height of 1,500mm. Importantly for its target market - which includes applications such as retail, offices and schools - the platform entry height is just 363mm. Platform capacity is 130kg with a further 90kg on the material shelf/tray, while 112kg can be placed on a chassis storage tray.

The brakes are automatically on at all times, there is a spring loaded button built into the push handles to release them when pushing. For faster moves fork pockets are built in.



*The Spin-Go is targeted at smaller retail establishments, offices and schools.*



The Movember charity event to raise funds for men's cancer charities has now passed and Team Nifty is celebrating, having confirmed that it raised more than £3,200 for its moustache growing efforts. After a month of intensive facial hair cultivation, the team was proud to sport its impressive and varied selection of upper lip hair styles and shapes.

The team would like to thank all those that so kindly donated money to this worthy cause and helped make it so successful.

## IPAF to collect accident data

IPAF – the International Powered Access Federation is to begin systematically recording worldwide data on accidents/incidents involving aerial work platforms.

The aim is to build a comprehensive record of known incidents and store them in one location in a common format, something which does not currently exist. The association is encouraging all members - manufacturers, rental companies, contractors and users - to report any known accidents or incidents using a standard form that will be available on its web site from 15th January.



In the initial phase, IPAF is calling for reports of any known serious accidents and fatalities involving aerial lifts in the UK and any known fatalities worldwide. Aerial lifts actually account for a very small percentage of all accidents related to work at height, and this project is aimed at uncovering hard data to inform further safety initiatives.

## Welsh company appointed Sany distributor for UK

Welsh company Tramor – based in Aberaeron, Ceredigion – has been appointed exclusive UK dealer for the Sany construction equipment group of Hunan province, China.

The newly formed company will sell the full range of Sany heavy industry

machinery which includes crawler and mobile cranes. Sany claims to be the world's sixth largest construction equipment manufacturer, employing more than 70,000 people. In June 2011 Sany opened a €100 million European

manufacturing plant in Bedgurg, Germany.

As a result of the contract Tramor will employ around 20 new staff. Directors John Lewis and Rhodri Morgan described the contract as a very positive move for the

construction industry in the UK which will have immediate and encouraging economic implications for Wales. The first consignment of machinery and spares is scheduled to arrive over the next few months.

## UK Tower Crane register a casualty?

A UK government review of health and safety regulations, led by Professor Ragnar Löfstedt, has recommended a 35 percent cut in the number of regulations with further reductions going forward. The Notification of Tower Cranes Regulations - introduced last year following a number of high-profile crane incidents - is likely to be one of the first things to go "because it has little value and has done nothing to improve safety standards".

The Work at Height Regulations 2005 are also to be reviewed by April 2013 so that people do not go beyond what the legislation was originally intended.

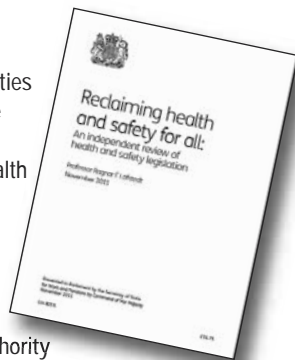
### Recommendations include:

- Self-employed workers whose work activities pose no potential risk of harm to others be exempted from health and safety law.
- The planned review of European Union health and safety legislation in 2013 be risk and evidence-based.
- The HSE undertakes a programme of sector-specific consolidations to be completed by April 2015.
- Legislation be changed giving the HSE authority to direct all local authority health and safety inspection and enforcement activity.
- Regulatory provisions that impose strict liability should be reviewed by June 2013.

Another underlying change could be a shift in the way the HSE prosecutes companies.



Professor Ragnar Löfstedt



## Rival restructures in Spain

Despite "very difficult market conditions" and stating categorically that it is fully committed to the Spanish market, Dutch-based international rental company Rival - which operates locally under the Clem-Rival brand - is adjusting its operations in Spain as part of a long term strategy.

Rival says that "there is an overcapacity in the aerial work platform market and a strong pressure on rental rates." As a result it says that it will move to fewer, larger depots and a new service structure. While the changes will inevitably involve depot closures and fleet reductions, the company says that it will still cover more than 60 percent of the Spanish market in terms of value and 50 percent geographically. The company currently operates from 14 locations.

## Boels acquires Baurent and Warmerdam

Holland's largest equipment rental group Boels has acquired Germany's Baurent Baumaschinen Miet-Service from Japan's Itochu. Baurent has revenues of around €32 million, 182 employees, 29 locations and has been in business for almost 40 years.

At the same time it acquired Warmerdam Hoogwerker Systemen, a single outlet access business with around 21 employees based in Sassenheim, between Amsterdam and Rotterdam. No financial details of either transaction have been disclosed.

Boels has also placed an order for 50 spider lifts with Italian manufacturer Easy Lift. The order is made up of three models, the 13 metre R130, 16 metre R160 and 19 metre R190, with delivery to be completed by February.

Part of a delivery of new Easy Lift spider lifts to Boels



## JLG to launch crush protection

JLG is to introduce "an innovative new accessory designed to provide enhanced control panel protection for operators of its boom lift products".

The company says it has been developed to meet customer needs and initiatives in Europe. It has been designed to allow a 360 degree work envelope, be field installable and easy for customers to implement without adding significant cost to the equipment. The move appears to be a response Skanska UK's lead in demanding all boom lifts on its sites to be fitted with active control panel protection/anti-crushing systems.

## Telehandler dealer closes

Rochdale-based P. Casey has withdrawn from the equipment sales market and put its distribution business into administration as part of a restructuring within the group. The company was a Merlo telehandler and New Holland dealer and one of five companies within the group which includes construction, environmental and rental businesses. Administrators Sarah Bell and Philip Duffy of MCR are marketing the business and assets for sale.

## 10 Multitel spiders for Gardemann

Gardemann, the German subsidiary of Lavendon, has recently taken delivery of 10 Multitel Pagliero 22.5 metre SMX 225 tracked spider lifts which incorporate a number of features specific to Gardemann's requirements.

The SMX 225 offers up to 10 metres of working outreach and an up and over reach of 10.5 metres, through 360 degrees, yet weighs just 2,550kg in standard format.

A Multitel SMX225 at work in the UK.



## Manitowoc updates fourth quarter outlook

Manitowoc has announced a reduction to its fourth quarter forecasts due to component delays and the on-going machinists strike at its Wisconsin plant.

In a statement the company said that "recently identified supplier delivery issues with certain hydraulic components, will delay the shipment of some crane products into the first quarter of 2012."

# Elev8 orders 50 metre Bronto

Sheffield-based access rental company Elev8 has ordered the UK's first 50 metre Bronto S50XDTJ truck mounted lift, mounted on a 26 tonne 6x4 MAN TGS 26.400 chassis. The new lift features a three section main boom and three section telescopic articulated jib capable of an up and over reach of 15.5 metres at a height of around 32 metres. Maximum outreach is 36 metres.

The Bronto S50 XDTJ



The Elev8 unit will be fitted with the standard platform with 700kg capacity. The company has also ordered a '360 degree camera cage' which includes a removable seat, hands-free safety brake and 300kg capacity platform mounted winch. Elev8, is part of window cleaning business Cinderella Access, which was established by Jason Machin in 2006.

## Sterling Crane to acquire Freo

Canadian crane rental company Sterling crane of Edmonton, Alberta is to acquire Freo Cranes of Henderson, Western Australia.

Freo runs a fleet of between 160 and 200 cranes topped out by a 750 tonne Manitowoc crawler and three 500 tonne Liebherr LTM1500s from its head office and six other locations in Western Australia, plus two in Queensland that trade as Global Cranes.

Sterling Crane - managed by Dave Snyder and owned by Marmon Construction Services - operates a fleet of around 600 cranes the largest of which is a 1,250 tonne Demag CC8800. The company has 23 locations throughout North America plus three in India where it trades as Astha Sterling Crane.

## ATN hits the majors

French-based aerial lift manufacturer ATN has sold a number of its booms to Loxam and Hertz and is to launch up to four new models in 2012.

Loxam, Europe's largest equipment rental company, has ordered both ATN mast booms and a number of 33ft Zebra 12 articulated booms. Hertz has ordered a number of the company's eight and 10 metre mast booms, the Pfaf 880R and Pfaf 1000R.

ATN will also launch two larger self-propelled articulated booms this year along with a new 11 metre mast boom and possibly a larger Rough Terrain scissor lift.



One of the ATN Zebra 12 booms for Loxam.

## Two Swedish acquisitions for Ramirent

Finnish international rental company Ramirent has acquired two Swedish rental companies – TLM-Tannefors Lift-och Maskinuthyrning and Consensus Entreprenad.

With total revenues around €8.8 million TLM-Tannefors has three locations in Linköping, Norrköping and Motala in the Östergötland region of central Sweden. It specialises in aerial lifts and scaffolding, but also offers cabins and light equipment. All 35 staff will remain with the business.

Consensus Entreprenad, specialises in the rental of customised accommodation modules with annual revenues of around €2.8 million and eight employees. The company was founded in 1993 and operates from one outlet in Karlskoga and is a leading company in its local market.

Ramirent is the second largest equipment rental company in Sweden with 81 locations and revenues last year of €145 million.

## Movex appoints Powerlift UK

Spanish vehicle mounted aerial lift manufacturer Movex has appointed Power Lift UK as its distributor for the UK and Ireland. The Movex range includes van, Land Rover and truck mounted lifts from 9.5 to 16 metres all of which are light enough for 3.5 tonne vehicles.

Power Lift is owned and managed by Malcolm Kitt which has distributed van mounted lifts in the UK for some time. It also sells and supports the Easy Lift range of spider and truck mounted lifts and Faraone push around and self-propelled lifts.



Some of the Movex Land Rover models.



Edinburgh-based rental company Bernard Hunter has taken delivery of the first Liebherr 45 tonne LTC 1045-3.1 City type All Terrain crane in the UK. The innovative LTC 1045-3.1 features a single cab mounted on a short telescopic 'boom' allowing it to sit on the superstructure or elevated for crane duties, and relocate to the front of the chassis for road travel. At the handover were (L-R) Daniel Pitzer and Willie Wylie of Liebherr, Jim and Mark Rafferty of Bernard Hunter with Christoph Kleiner and Reinhold Breitenmoser of Liebherr.

Specialist IT solutions for the rental industry

"inspHire is helping us to  
**increase**  
our rate of business"



Jason Seddon - Director - Aerial Platforms Ltd



"In inspHire we have invested in a very user friendly system, and a company that provides a service that is delivered on time and with the upmost of professionalism."

inspHire's passion for the hire industry and commitment to providing cutting edge hire solutions is reflected in their success as 'Hire Supplier of the Year 2011.'

0800 634 0600  
sales@inspHire.com  
www.inspHire.com



# SUMNER

Does your material lifts supplier:



- Maintain local stocks?
- Promptly responds to your enquiries?
- Promptly answers your technical questions?
- Offer next day delivery?
- Treat you like a valued customer?



**IF NOT, ISN'T IT TIME YOU STEPPED UP TO A SUMNER LIFT?**

**Sumner Manufacturing UK Ltd**

Unit 16a, Blackpole Trading Estate East, Blackpole Road, Worcester WR3 8SG  
T: 01905 458333 F: 01905 458222

[www.sumner.com](http://www.sumner.com)

## Kobelco launches S series

Kobelco Cranes has started production of its new S series crawler cranes aimed at markets outside of Japan, Europe and North America. The 10 model line-up includes cranes from its CKS, BMS and 7000S series with maximum lift capacities ranging from 60 to 250 tonnes.

For more 'regulated countries' the recently launched environmentally more efficient Kobelco G series machines are available. The main differences between the CKE G series and S series include the undercarriage design, engine and operator controls.



*The new Kobelco CKS2500.*

## New 12 tonner from Valla

Italian mobile crane manufacturer Valla has launched the 12 tonne 120EVO compact battery powered pick & carry crane. While the name Evo, suggests that this is an evolutionary model, it is in fact a major improvement compared with the company's old model. The new crane is more compact, lighter in weight, with a lower centre of gravity, has a longer, more sophisticated boom, more efficient drive system and far better styling.

Overall width is 1.9 metres (200mm narrower), height is 300mm lower at two metres and it has a 300 mm shorter overall length at four metres. A longer, full power five section synchronised boom has a lifting capacity of 1.7 tonnes at its 13.5 metre maximum tip height. Maximum radius, with boom horizontal is 9.5 metres at which the crane can handle a full tonne.



*The new Valla 120 EVO*

## R&B appoints European distributor

Japanese spider crane manufacturer R&B Engineering has appointed the German operation of France Elevateur as its sole distributor in Europe.

France Elevateur manufactures a range of vehicle mounted aerial work platforms which it largely sells in its home market. It opened its German sales operation in Leipzig in April 2011.

The full R&B mini crane range comprises four models but only two - the 2.8 tonne CR285D, which weighs 1,750kg and boasts an 8.9 metre main boom and the significantly larger CR335D, rated at 2.98 tonnes weighing 3,760kg with a 12.5 metre main boom - are CE approved.



*An R&B CR285D spider crane.*

# Australia's first Sennebogen 608 for DPW

DPW Plant hire, a 360 degree telehandler rental specialist, has taken delivery of the first Sennebogen 608 Multi Crane in Australia. The 608's forks can lift six tonnes to 10 metres, five tonnes to 16 metres or four tonnes to 20 metres.



The machine also features a hoist, a 4.5 to seven metre offset jib, an 800kg capacity work platform and shovel attachments. As a crane it offers a maximum capacity of eight tonnes. The 608 also features an elevating operators cab and can travel at speeds of up to 30kph.

*The Sennebogen 608 is like a Swiss army knife of a crane/telehandler.*

## Wemo-tec teams up with Nationwide Platforms

UK-based underbridge inspection platform rental company Wemo-tec UK has announced a rental partnership with Nationwide Platforms. Nationwide will retire its two underbridge units at the end of March and supply its customers from the Wemo-Tec fleet. Conversely Wemo-tec will source its standard powered access requirements from Nationwide.



*A Wemo-tec MB180 underbridge unit in action*

## Liebherr marine crane

Liebherr has released details of a new hybrid crane that serves as both an offshore and mobile harbour crane. As a mobile harbour crane the TCC 14000-400 D Litronic can lift loads of up to 400 tonnes and offers a 68 metre lift height and 70 metres outreach. It can also be driven onto a floating installation and fixed for use as an offshore crane under offshore conditions.

The new model incorporates Liebherr technology from both its offshore and mobile harbour crane product groups. The undercarriage incorporates drive technology, with 48 wheel sets from a standard Liebherr mobile harbour crane incorporated into a new chassis design which consists of a central X-shaped structure to which four outriggers are mounted.

The crane manages to achieve ground bearing pressures of a standard harbour crane not only while travelling, but also during lifting operations, in spite of its total weight of 1,100 tonnes.



*The new Liebherr TCC 14000-400 D Litronic mobile harbour crane/offshore crane can lift 400 tonnes and weighs 1,100 tonnes.*



## UK and Ireland Crane service, parts and training

### Brands

#### Current Models

Manitowoc  
Grove  
Potain

#### Older Models

Krupp  
Coles  
Grove/Coles

#### Products

Tower cranes  
Mobile cranes  
Crawler cranes  
Industrial cranes

### Crane Care Services

#### Field service

Thorough examination  
Inspection  
Service  
Repair  
Load testing  
Erection — tower cranes  
Dismantle — tower cranes

#### Training

Manufacturer-approved training  
CPCS-approved training

#### Workshop resources

Repair  
Load testing  
Structural welding  
Full rebuilds  
Contract management

#### Parts

Over 4,500 line-items — in stock  
Kessler axle parts and wire ropes — in stock  
Older model Coles and Krupp parts — in stock

**If we don't have it in stock, we'll get it!**

Manitowoc UK and Ireland provides outstanding after-sales support. Parts and service are readily available either at your location or at our workshop facilities at Buckingham.

With our extensive range of new and used equipment, we can help you be more productive.

**Call us today for a quote!**



#### Buckingham facility

Manitowoc Crane Group (UK) Ltd.  
Manitowoc House, Network 421,  
Raddlive Road, Gawcott,  
Buckingham, MK18 4FD

Tel: +44 (0) 1280 818830

[www.manitowoc.com/cranesdealer](http://www.manitowoc.com/cranesdealer)

It's here!  
the all  
new **city**  
range

of electric  
powered platforms  
from Versalift

- Low emissions
- Virtually silent operation

Access to  
a greener  
world



[www.versalift.co.uk](http://www.versalift.co.uk)  
email us at: [electric@versalift.co.uk](mailto:electric@versalift.co.uk)

## Tracked chassis for cranes and platforms

UK-based Autoguide has launched a new crawler carrier for loader cranes and work platforms aimed at utility companies. The 7.5 tonne rubber tracked TC600 Terrain Master has been specifically designed to carry either a nine tonne/metre loader crane or a 15 metre aerial work platform. It has a top speed of 11kph and is available with full radio remote control and side, front and rear stabilisers. The unit also features a 4,500kg capacity electric winch and a charging station for the remote control batteries.



The TC600 Terrain Master can be fitted with a 15 metre access platform or a loader crane

The first unit mounted with a Palfinger PK9001 loader crane has been sold to Newcastle-based VLS, a supplier of leased vehicles to the electric supply industry. The crane has a maximum reach of 8.7 metres and a maximum capacity of 5.7 tonnes.

## Ashtead triples profits

Ashtead, owner of Sunbelt in the USA and A-Plant in the UK has reported a strong first half with revenues up 24 percent to £575.5

million, meanwhile pre-tax profits improved 351 percent to £82.9 million.

Sunbelt revenues climbed 26 percent to \$775.8 million, while operating profits jumped 75 percent to \$173.5 million. The acquisition of Empire Scaffold contributed around \$24 million. In the UK A-Plant revenues grew 14 percent to £93.7 million and operating profits increased by 26 percent to £5.3 million.



## Cusack launches Blulift

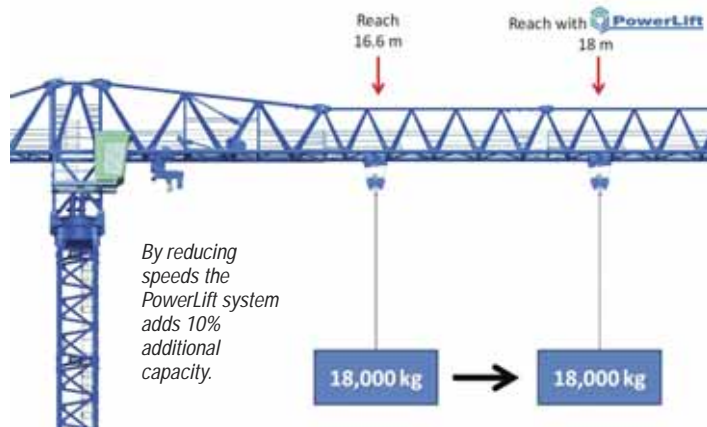
John Cusack, previous owner of Sky Lift, the Irish aerial lift and telehandler rental company that failed last year, has formally announced a new access sales and rental company - Blulift. The company says it will focus on niche powered access equipment - including spider lifts - along with training and maintenance services from hubs in Dublin, Limerick and Cork.



Those familiar with Sky Lift will recognise Blulift's logo and branding.

## Oil&Steel to distribute Palazzani

Italian truck and spider lift manufacturer Oil&Steel is to distribute Palazzani spider lifts through its German sales and support network, following a 'strategic joint agreement' and recent successful co-operation efforts. The deal will allow Oil&Steel to sell Palazzani's 23 to 52 metre spider lift product line alongside its own range of Octopussy spider lifts which have working heights from 14 to 21 metres.



## Linden Comansa introduces PowerLift

Spanish tower crane manufacturer Linden Comansa has started shipping its new PowerLift system. The device - standard on all the cranes in the LC500, LC1100, LC1600, LC2100 and LC3000 series - provides a 10 percent load chart improvement at reduced speeds. When enabled there is an automatic reduction of hoist and trolley speeds which will allow a given load to be taken to a greater radius. For example, the company's 21 LC 400/18 tonne tower crane can lift its maximum capacity at up to 16.6 metres radius, however with the PowerLift system engaged, it can take it out to 18 metres.

## Ahern files Chapter 11

Las Vegas, USA-based aerial lift and telehandler rental company Ahern Rentals with 74 locations in 22 states, has filed a voluntary Chapter 11 bankruptcy protection petition in order to restructure over \$500 million of debt. The company has also reached an agreement with existing lenders for Debtor-in-Possession financing, with \$50 million of availability.

Ahern said it was obliged to file because it had failed to extend its revolving credit facility, which had a maturity date of August 21st, 2011. Since then its bank has continued to fund the company, while negotiations continued.

## First new Liebherr for SCH

UK-based Specialist Crane Hire (SCH) has taken delivery of its first new Liebherr crane - a two axle, 40 tonne LTM 1040-2.1. The crane joins a fleet of around 35 units, operating from four depots, and is equipped with a four section 35 metre main boom, plus 9.5 metre swingaway extension with offsets of 0, 20, 40 or 60 degrees. Initially concentrating on nuclear power station work, Specialist is expanding its fleet in order to move into the general crane rental market, although long term power generation contracts remain its core business.

Lee Marsden (L) operations manager for Specialist Crane Hire takes delivery of the new crane from Steven Elliott of Liebherr Great Britain.



# Another City crane for PP Engineering

Rotherham, UK-based crane rental company PP Engineering has taken delivery of its sixth Terex City-type All Terrain crane. The new 40 tonne AC40 joins two existing AC40's, two AC30's and an AC25 in a predominately Terex-based fleet of 20 cranes ranging from 25 to 220 tonnes operating within a 100 mile radius of South Yorkshire.

The new AC40 has a 31.2 metre main boom, which can be extended to 46 metres with the on-board swingaway extension. The crane has also been supplied with an extra 1.2 metre 'runner' for lifts of up to 15 tonnes on sites with restricted headroom - recently used during the installation of new printing pressed for the Hull Daily Mail.

PP owner Phil Patching said: "Installing overhead cranes in factories is an important part of our business, so the low clearance height afforded by our City cranes is a great advantage. Their ability to work on difficult terrain is also a big plus."



The AC40 is an ideal unit for internal lifting

## Manitou merges in North America

Telehandler and compact equipment manufacturer Manitou has merged the sales, marketing and product support operations of Manitou Forklifts Canada with that of Manitou Americas in the USA. The change follows the recent integration of Manitou North Americas and Gehl.

Manitou says the new operation will provide dealers and customers with a single sales call centre for North America, improved parts availability from a larger and faster machine delivery, thanks to a single larger North American inventory. Two dedicated field sales and service teams will support Eastern and Western Canada with dedicated dealer development and assistance. Manitou's Canadian dealer network has more than 60 locations.



## IPAF breaks records

IPAF - the International Powered Access Federation - has broken two training records in 2011.

A record number of 101,457 people completed an IPAF training course during the year which includes operator and access management courses. The association also issued 97,488 PAL Cards (Powered Access Licences) to operators successfully completing a course at one of its approved training centres - almost 14 percent up on 2010.

The PAL operator license is valid for five years and there are now almost 400,000 'live' cards in circulation.



**PLATFORM BASKET SRL**  
Via Grande 27-42020 Poviglio (RE) Italy  
tel: +39 0522 967666  
info@platformbasket.com  
www.platformbasket.com







1 0 0 4

Toucan® 10E-customers already went ahead of you

The Toucan® 10E has proven to be **tremendously successful** since its introduction. Easier to transport and manoeuvre, specifically designed to give outreach and coming standard with direct electric drive; it provides excellent **value for money**. And there are a thousand units out there to prove it. **So when will you get one?**

JLG. Helping you reach your potential

**JLG**®



- SkyAces has appointed Hybeco as its dealer in Norway and Steyr truck sales in Austria.

- Wagenborg Nedlift has appointed Marlis Lübben to handle crawler crane sales enquiries in Germany.



Marlis Lübben

- Australian rental company Summit Tower Hire has taken delivery of four 70 metre Bronto Skylift S70 XDT's.

- Nancy Quick a well known compliance specialist at OSHA in Illinois has retired after 30 years.

- Wisconsin-based Man Lift Manufacturing has appointed Phil Sprio as its chief executive.

- Francine Shore has joined Caterpillar to manage its trade Press Relations in the Europe, Africa and Middle East region.

- UK-based Platform Hire has added more than 20 Snorkel scissor lifts to its fleet.

- Ventalus - a new company specialising in used access equipment - has been established in Russia by Ernst van Hek.

- Jonathan Wiseman has joined Access Industries, the UK dealer for Multitel Pagliero.



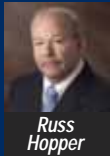
Jonathan Wiseman

- Link Belt has appointed a new district service representative for South America - Juan Rosas - and Darrell Knight for the Mid-West USA.

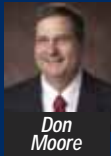
- Finn Løkken, managing director of Cramo Norway has resigned and will leave the rental industry.

- Two Sennebogen 6130 HD crawler cranes have been supplied to CECC for the Al Ruwais Port extension in Qatar.

- Link-Belt has promoted Russ Hopper to vice president, manufacturing and Don Moore to the post of vice president, design engineering.



Russ Hopper



Don Moore

- Prangl has purchased three new Liebherr MK self-erecting tower cranes.

- UK-based Astra Access Safety Training has moved to new premises in Darton, Barnsley, Yorkshire.

- Skyjack UK has become one of the first access companies to equip its staff with the new ZT safety harness.

- RKP Access Platforms has opened in Tyne and Wear, England.

- New rules in Singapore stipulate that all loader crane operators must be tested and certified by Sept 2013.

- UK rental company Hewden has agreed a 12 month deal with Balfour Beatty Utility.

- Joe Pustizzi founder of Trico Equipment, an aerial lift rental pioneer has died aged 96.



Joe Pustizzi

- Stefano Flisi, son of Fiorenzo Flisi, chief executive of Socage has died following a heart blockage - he was just 15.

- German crane rental company Wiesbauer has taken delivery of a new 750 tonne Liebherr LR1750 crawler crane.

- Bridon International is investing £30 million in a new wire rope factory in Tyneside, UK.

- Wind turbine specialist, Give Svaergods has taken delivery of the first Terex AC140C in the UK.

- Spider crane specialist GGR has developed a car lifting frame.

- JCB's UK employees received a £500 Christmas bonus and 5.2% pay increase.

- Snow vehicle manufacturer Prinoth has mounted a Socage DA328 on a Go-Tract 2000 tracked undercarriage.

- SafeWorks has appointed Erik Elzinga to the new role of vice president engineering/new product development.



Erik Elzinga

- A new company Örumcekci claims to be the first rental company in Turkey specialising in spider lifts.

- Belgian rental company Lauwereys has added GSR E200s and a Bronto S50STDJ to its fleet.

- Sany America has appointed Binder Machinery of South Plainfield, New Jersey as a dealer.

- UK rental company Hewden has appointed Michaela Simpson to the new role of head of customer experience.



Michaela Simpson

- French rental company Locamod has taken delivery of three new Snorkel A38E articulated boom lifts.

- Penny + Giles, has appointed Wimesure as its distributor in France.

- The first 51 metre CTE B-Lift 510 has been sold to Katmerciler in Turkey

- Off-road tyre specialist Mitas has launched a new All Terrain crane tyre.

- Italian crane rental company ADP Sollevamenti has taken delivery of Italy's first 300t Grove GMK6300L.

- Tower crane anti-collision specialist Smie has announced double digit growth in its first half.

- Trailer manufacturer Nootboom has opened a service centre in Bochum, Germany.

- Manitex has appointed Joe Dunn and Bryan Dammann as regional business managers.



Joe Dunn and Bryan Dammann

- German rental company, Breuer & Wasel's has taken delivery of a new Liebherr LR 1600/2 crawler crane.

- Ramirent has acquired the scaffold division of Ajos in exchange for its hoist and mast climber business.

- UK-based access rental company Advanced Access has achieved IPAF Rental + status.

- JCB is to develop a new generation of engines that will create 350 jobs in the UK.

- US-based Vista Training has acquired HeviCert, an international crane operator training business.



Adrian Hutchinson

- UK-based Clements Plant & Tool Hire has appointed Adrian Hutchinson as operations manager.

- Hans Van Seumeren's shipping business Roll-Dock is entering the mobile crane market with subsidiary Roll-Lift.

- Italian rental company Nacanco has added 30 Bravi Leonardo lifts and 10 Genie mast booms to its fleet.

- Dutch-based Sijtsma has taken delivery of the first GSR E320PXJ 32 metre truck mounted lift.

- CNH has announced that chief executive Harold Boyanovsky is retiring and will be replaced by Richard Tobin.



Richard Tobin

- UK rental company Leggat Plant has taken delivery of a new 50 tonne Terex AC50-1 All Terrain crane.

- The first Bauma Africa is to be held in 2013 in Johannesburg.

- Dutch rental company Peinemann has ordered a new 90 metre Bronto S90HLA.

- United Rentals has acquired Blue Mountain Equipment Rental of Uniontown Pennsylvania.

- Texas-based Briggs International has appointed Mike Winemiller as president.

- UK-based Cumberland Industries has delivered 10 truck mounted loader cranes in Iraq.

- TCA Lift has supplied a 52m Falcon FS520C spider lift for maintenance at Petronas twin towers.

- Finnish-based crane company Havator Group has appointed Kristian Nummelin as technical director.



Kristian Nummelin

- Cargotec has agreed a long term partnership with Komas which includes the sale of its Narva, plant in Estonia.

- Sunbelt Rentals has acquired Pacific High Reach & Equipment Services, of Orange, California.

- Snorkel has appointed Mike Falcon as its new regional sales manager for South America.

- Kaj Hoffmann, one of the pioneers of powered access rental in Sweden, has died aged 69, following a short illness.

- UK Forks the telehandler rental company has reported a strong first half.

- Palfinger is to buy back up to nine percent of its shares over the next three years.

- ALL Erection & Crane Rental has added 18 new Link-Belt and five Grove cranes to its fleet.

- Harley Bird, daughter of GGR Unic's joint owner Gil Riley, has won a Bafta award.

- Moroccan distributor Vemat has delivered three new Terex AC 40 Optimax All Terrain cranes.

- Margarete Haase, a director of Deutz, has been voted 'Female Manager of the Year' by FT Deutschland.



Margarete Haase

- UK-based rental company Hewden has opened a new depot in Southampton.

- UK-based access rental company AFI-Uplift has been awarded 'Investors In People silver status.'

- Italian spider lift manufacturer Hinowa has introduced a new automatic RPM control on its 14 to 19m models.

- German aerial lift producer H.A.B has agreed a partnership with the Rent & Rise division of Aclarlar Makine.

- Zoomlion of China has announced a tower crane alliance with Indian industrial crane company ElectroMech.

- Volvo Rents has acquired Midwest Aerials & Equipment of St Louis.

See [www.vertikal.net](http://www.vertikal.net) news archive for full versions of all these stories