

# The **VertiK**al Guide

for buyers and users of lifting equipment  
para compradores y usuarios de equipos de elevación

Download  
a copy from  
**February  
28th**

to plan  
your visit,  
and then  
pick up a  
copy at the  
show



Cranes  
Aerial Lifts  
Telehandlers

Grúas  
Manipuladores  
Telescópicos  
Plataformas



[www.vertikal.net](http://www.vertikal.net)

# Whats on?

2014

## Samoter 2014

International earthmoving and construction equipment show  
February 27 - March 2nd, 2014  
Verona, Italy.  
Tel: 045 8298111  
www.samoter.com

## Conexpo 2014

The leading US equipment show  
March 4th-8th 2014  
Las Vegas, Nevada, USA  
Tel: +1 414-298-4133  
www.conexpoconagg.com



## IPAF Summit 2014

Annual Summit for International Powered Access Federation  
April 3rd, 2014, Windsor, UK  
Tel: +44 (0) 15395 66700  
Fax: +44 (0) 15395 66084  
Website: www.ipaf.org  
E-Mail: info@ipaf.org




## EWPA National Convention 2014

April 29 - May 2, 2014  
The Australian work platform association meeting and show  
Gold Coast, Queensland, Australia  
Tel: +61 (0)2 9997 5133  
Website: www.ewpa.com.au

## IPAF Asia Conference

IPAF's third Asia conference will focus on how to keep the use of aerial work platforms safe and productive.  
9th May 2014 Singapore   
Tel: +65 9686 4191  
www.ipaf.org/asiacference

## Vertikal Days 2014

UK/Ireland crane and access event   
May 14-15th 2014

Haydock Park, UK  
Tel: +44 (0) 8448 155900  
Fax: +44 (0) 1295 768223  
www.vertikaldays.net

## Apex 2014

June 24th-26th, 2014  
Amsterdam, The Netherlands  
Tel: +31 (0)547 271 566  
www.apexshow.com



## Europlatform

European access conference  
September 25th 2014.  
Berlin.  
Tel: +44 (0) 15395 62444  
www.ipaf.org



## SAIE 2014

Bologna Fair, building products.  
October 2014, Bologna, Italy  
Tel: +39 051 282111  
www.bolognafiere.it



## Bauma China

November 25-28, 2014  
Bauma in Shanghai  
Shanghai, China   
Tel: +49(0)89 9 4920251  
www.bauma-china.com

## bC India

December 15-18, 2014  
The third bauma/Conexpo exhibition in India  
Delhi, India  
Tel: +49 89 949-20255  
www.bcindia.com



## 2015

### Rental Show 2015

New Orleans, Louisiana  
22nd - 25th Feb 2015  
Tel: +1 800 334 2177  
www.therentalshow.com

## Intermat 2015

20-25th April 2015,  
Paris France   
Tel: +33 1 49685248  
www.intermat.fr

## ICUEE - The Demo Expo

October, 2015  
The US show for the utility industry, Louisville, Kentucky, USA  
Tel: +1 866-236-0442  
www.icuee.com

## 2016

### Bauma 2016

World's largest construction equipment exhibition,  
April 11th-17th 2016  
Munich, Germany  
Tel: +49 (0) 89 51070  
www.bauma.de

**Visit** [www.Vertikal.net/en/events](http://www.Vertikal.net/en/events) for a full listing of events with direct links to the organisers.

# Marketplace

RECRUITMENT . USED EQUIPMENT . REPLACEMENT PARTS . RENTAL . SAFETY EQUIPMENT

## cranes & access

FOR USERS & BUYERS OF LIFTING EQUIPMENT

Cranes & Access reaches over six times as many UK/Irish buyers of aerial lifts and lifting equipment than any other crane or access magazine, along with an exceptionally strong international readership, with over 15,000 lifting related professionals around the world reading either the printed or online editions of the magazine.

Given the wide global readership you will be surprised at how cost effective it can be as a medium to promote your products or services.

### ADVERTISING:

The Vertikal Press Ltd.  
PO Box 6998, Brackley,  
NN13 5WY UK.  
Tel: +44 (0)8448 155900  
Fax: +44 (0)1295 768223  
E-mail: [advertising@vertikal.net](mailto:advertising@vertikal.net)

### GERMANY:

+ (49) (0)761 189786615.

## ADVERTISEMENT

**M. Stemick GmbH**  
Kran- u. Baumaschinenhandel

**CRANES FOR SALE**

ALL TERRAIN-CRANES

Make / Type	y. o. m.	Drive	Boom / Fly Jib
201 Gottwald AMK 31-21	1984	4x4x4	20,50m
251 Demag AC 75	1998	4x4x4	25,00m + 13,00m
301 PPM ATT 335	1997	4x4x4	27,40m + 15,00m
351 Terex AC 35	2006	4x4x4	30,40m + 15,00m
401 Liebherr LTM 1040-1	1999	6x6x6	30,00m + 14,50m
551 Liebherr LTC 1055-3.1	2005	6x6x6	36,00m + 7,80m
551 Liebherr LTC 1055-3.1	2005	6x6x6	36,00m + 7,80m
551 Krupp KMK 4055	1989	8x6x8	35,10m + 16,00m
551 Grove GMK 3055	2006	6x6x6	43,00m + 15,00m + 2,00m
601 Faun ATF 60-3	2005	6x6x6	40,00m + 16,00m
701 Krupp KMK 4070	1995	8x6x8	38,10m + 16,00m
701 Faun ATF 70-4	1999	8x8x8	40,50m + 16,00m
801 Faun ATF 80-4	2005	8x6x8	48,50m + 16,00m
1001 Grove GMK 4100 L	2008	8x8x8	60,00m + 22,00m
1001 Grove GMK 5100	2002	10x8x10	51,00m + 18,00m
1101 Tadano Faun ATF 110G-5	2008	10x8x8	52,00m + 16,20m
1201 Liebherr LTM 1120/1	2000	10x8x10	56,00m + 28,00m + 3,00m
1301 Liebherr LTM 1130-5.1	2007	10x8x10	60,00m + 19,00m
2001 Grove GMK 5200	2002	10x8x10	60,00m + 36,00m
3001 Liebherr LTM 1300/1	2001	12x8x12	60,00m + 49,00m
4001 Liebherr LTM 1400-7.1	2004	14x8x14	60,00m + 56,00m + 84,00m

RT-TELESCOPIC-MOBILE-CRANES


Make / Type	y. o. m.	Drive	Boom / Fly Jib
551 Grove RT 760 E	2005	4x4x4	33,50m + 17,10m

LATICE-BOOM-TRUCK CRANE

Make / Type	y. o. m.	Drive	Boom / Fly Jib
1151 Link-Belt HC 238	1982	10x6x6	48,00m/18,00m
1701 Demag TC 650	1981	10x4x6	72,00m/60,00m

YARD-CRANE

Make / Type	y. o. m.	Drive	Boom / Fly Jib
141 Demag V 73	1988	4x2x2	13,10m
121 Liebherr LI 1012	1990	4x2x2	12,00m



**Import • Export**

M. Stemick GmbH  
Kran- u. Baumaschinenhandel  
Import - Export  
D-45721 Hatters / Germany

Tel: +49-2364 - 108203  
Fax: +49-2364 - 15546  
Mobile: +49-172-2332923  
e-Mail: [info@stemick-krane.de](mailto:info@stemick-krane.de)  
Internet: <http://www.stemick-krane.de>

RECONDITIONING • HIRE • WANTED • USED EQUIPMENT • SPARE PARTS • RECRUITMENT

February 2014 cranes & access

71





## John Taylor Crane Services Ltd

Is currently recruiting for a **Heavy Plant Engineer** based at our **Bedfordshire depot**.  
**Good rates of pay for the right candidate.**

**Responsibilities;** Carrying out repairs to mobile cranes, ordering and fitting necessary parts.

**Requirements;** A good knowledge of cranes, heavy plant or agricultural plant including general hydraulics and electrics, ability to work on own unsupervised and as part of a team, a good awareness of Health & Safety issues and a full driving licence.

A CPCS card would be an advantage.

Please send CV via email to [julie@jtcranes.co.uk](mailto:julie@jtcranes.co.uk) or by post to John Taylor Crane Services Ltd, Berrys Yard, Caxton Road, Great Gransden, Sandy, Beds, SG19 3BH. For further information please contact **Russ Taylor on 01767 677155**

## Installation Manager

Salary: £30000 pa plus

Based at **Tamworth Staffordshire**

### Job Description

This is an opportunity to join a small family business that specialises in the installation of vehicle mounted cranes and the building of commercial bodywork.

Job responsibilities include overseeing all workshop functions. This will include staff, premises and the running of the workshop. This is in addition to normal personal routine engineering duties.

- To determine the work prioritisation and task allocation for all workshop tasks
- To oversee workshop staff so that appropriate information, instruction, training and guidance is provided when required.
- To be responsible for the health and safety and welfare of staff and customers in the workshop.
- To be responsible for the security and efficient running of the workshop and to consider improvements and efficiencies wherever possible.
- To organise appointments, collections, transportation and support for the workshop where required.
- Allocate work and support to the workshop staff in the most efficient and effective way.
- Line manage workshop staff.
- Liaise with sales, Accounts, Parts or Company Directors as required.
- Undertake welding, fabrication, mechanical or testing work as required.
- Carry out and document Health and Safety checks and be responsible for premises security.



Application forms are available on our web site: [pmcranesuk.co.uk](http://pmcranesuk.co.uk).

Please download and send completed application to [tracie@c-h-l.net](mailto:tracie@c-h-l.net).

Alternatively post to T.Sharratt Central House, Hedging Lane, Hockley, Tamworth, Staffs B77 5EX

## Sales Representative Required

London South East

**2 Cousins Powered Access** are looking to recruit a highly motivated **Regional Sales Representative** based in London, to organise and carry out sales activities.

The successful candidate will promote, hire & sell Powered Access to existing and new clients.

This is an excellent opportunity for an experienced individual looking to further their career in the powered Access Industry.



The position is based in East London.

for an application form, please email: [office@2cousins.co.uk](mailto:office@2cousins.co.uk)

## Find that person

Looking for Crane, Access  
or Telehandler people?  
Looking for a job?

Then why not start right here in the new **Cranes&Access** recruitment section?

With your support we can build a highly useful **recruitment resource** for the industry right within the UK and Ireland's only dedicated publication.

Call or email us today to find out about our great start up rates Jobs Wanted ads are free through 2011.

**+44 (0) 8448 155900**

If responding to one of the ads please say you saw it in **Cranes&Access**.

**Vertical**  
.net

**cranes  
& access**

**THE ECO-FRIENDLY SOLUTION**

# GANTIChARGER

**The revolutionary new charger**

The **GantiCharger** is made to revive, charge, check and maintain batteries.

- **GantiCharger** is designed to reduce the frequency and cost associated with battery replacement.
- **GantiCharger** is made to both save energy and significantly prolong battery life with reduced maintenance cost.
- **GantiCharger** prevents overheating the common cause of battery damage.



For UK sales: 07807 348584  
For Dealer enquiries: +47 93405970  
[www.ganticharger.com](http://www.ganticharger.com)

# CAUTRAC

TRACKS | CONSTRUCTION MACHINERY | PARTS

## RUBBER TRACKS & TRACK PADS



**ALSO AVAILABLE FOR ALL TYPES OF MINI CRANES & ACCESS PLATFORMS**

**Ring today for a competitive quote**

Colchester 0044 (0)1206 273111  
Bolton 0044 (0)1204 791122  
[www.cautrac.com](http://www.cautrac.com)

**Collé RENTAL & SALES** *Your partner for every project*  
RENTAL | SALES | SERVICE




**NEW MAGNI NEW**

SPANITOU MAGNI XCMG HANSON WUMAS VITCI GEHL Genie H.A.B.

[www.colle.eu](http://www.colle.eu) | [info@colle.eu](mailto:info@colle.eu) | +31 (0)46 - 45 74 100

# TVH

**Reconditioned parts: A good alternative!**



Hydraulic valves      Steer axles  
Printed circuit boards      Thermal engines

 Reconditioned  
Recycled  
Reliable

**And many other parts both new and reconditioned**

**TVH UK LTD**  
Unit 17 • Paragon Way • Exhall • GB-CV7 9QS Coventry  
T +44 2476 585 000 • F +44 2476 585 001  
[sales@tvh-uk.co.uk](mailto:sales@tvh-uk.co.uk) • [www.tvh-uk.co.uk](http://www.tvh-uk.co.uk)

USED EQUIPMENT • SPARE PARTS • RECRUITMENT • RECONDITIONING • HIRE • WANTED • USED EQUIPMENT • SPARE PARTS • RECRUITMENT • RECONDITIONING • HIRE • WANTED

# media information pack 2014

Specialist information for the lifting equipment industry

Cranes • Access Platforms • Telehandlers  
Loader Cranes • Scaffold and Alloy Towers

## Vertikal Press



Download your copy from **Vertikal.net**

[www.vertikal.net](http://www.vertikal.net)

## UNIVERSAL CRANE MATS LTD

**The Load Spread Specialists**

**UK Hire - Large Range of Load Spread Options**  
**UK & Export Sales - Including Bespoke Solutions**

**Best Quality HDPE & Nylon Outrigger / Stabilizer Pads**

**UniMat HDPE Sleeper System - Manual Handling Friendly**  
**Up to 2.25m<sup>2</sup> with industry leading Safety Grip finish**

**Modular Aluminium System - Manual Handling Friendly**

**Timber Access Mats - Softwood / Hardwood inc. Tropical**

**Heavy Duty Fabricated Steel Mats**

**Standard & Bespoke designs of 80, 150 & 300 Tonne SWL**

**Impartial Load Spread Solutions...tailored to your needs**

Unit 6, Fox Covert Way, Forest Town, Nottinghamshire NG19 0FR

Tel: 01623 653588

Mobile: 07581 144466

email: [ucmltd@virginmedia.com](mailto:ucmltd@virginmedia.com)

Mike Allanson

**[www.universal-crane-mats.com](http://www.universal-crane-mats.com)**

**STRONGER THAN EXPECTED**

**SPIERINGS**  
MOBILE CRANES



[www.spieringscranes.com](http://www.spieringscranes.com)

Merwedestraat 15 5347 KZ OSS The Netherlands Tel +31 412 697777

SK2400-AT7 : Tip load 5.500 kg Max. load 18.000 kg  
Jib length 42 m Max. Hook height 56 m

## UPGRADE TO DIGITAL FOR CLEARER RADIO COMMUNICATIONS

For a FREE, No Obligation Trial Call  
**0800 975 7228**  
 or email [sales@sflmobileradio.co.uk](mailto:sales@sflmobileradio.co.uk)  
[www.radio-solutions.co.uk](http://www.radio-solutions.co.uk)



- DIGITAL RADIO SALES
- DIGITAL RADIO HIRE
- ACCESSORIES
- MAINTENANCE
- FREE PROFESSIONAL ADVICE
- OFCOM APPROVED






## Find out why JMS Plant Hire is one of the fastest growing powered access hire companies in the UK



Contact us today for details of our huge range of access solutions **0845 467 0000**

[www.jms-access.co.uk](http://www.jms-access.co.uk) • [hire@jms-access.co.uk](mailto:hire@jms-access.co.uk)







## PLANT & CRANE HIRE

- MOBILE CRANES 35-120 TONS
- IRON FAIRY & CITY CRANE
- CPA & CONTRACT LIFT SERVICE
- RIGGERS, SLINGERS - APPOINTED PERSONS
- TEST WEIGHT HIRE
- MACHINERY MOVEMENT SERVICE
- HIAB & LOW LOADER TRANSPORT
- FULL PLANT HIRE SERVICE AVAILABLE
- All OPERATORS FULLY CPC'S CERTIFIED
- CALL FOR A FREE SITE VISIT AND QUOTATION




Main Office t: +44 (0) 141 646 1212 e: [einfo@ab2000.co.uk](mailto:einfo@ab2000.co.uk)  
**[www.ab2000.co.uk](http://www.ab2000.co.uk)**








# ECO LIFT outrigger pads

The UK's Leading Supplier

- Manufactured in Germany to the highest standards from regenerated polyethylene
- Safe and easy to handle will not splinter
- No water absorption
- High resistance to impact and vertical pressures
- Under normal working conditions unbreakable
- Inbuilt memory, adapting to working surface
- Custom sizes available
- Supporting - mobile cranes, self erecting tower cranes, loader cranes, aerial work platforms, concrete pumps, tele handlers
- Load bearing capacities from 5 to 300 tonnes
- 3 year warranty against breakage



t: +44 (0)1952 671403  
 m: +44 (0) 7885 020 582  
 f: +44 (0)1952 671471  
 e: [sales@outriggerpads.co.uk](mailto:sales@outriggerpads.co.uk)



[outriggerpads.co.uk](http://outriggerpads.co.uk)

USED EQUIPMENT • SPARE PARTS • RECRUITMENT • RECONDITIONING • HIRE • WANTED • USED EQUIPMENT • SPARE PARTS • RECRUITMENT • RECONDITIONING • HIRE • WANTED

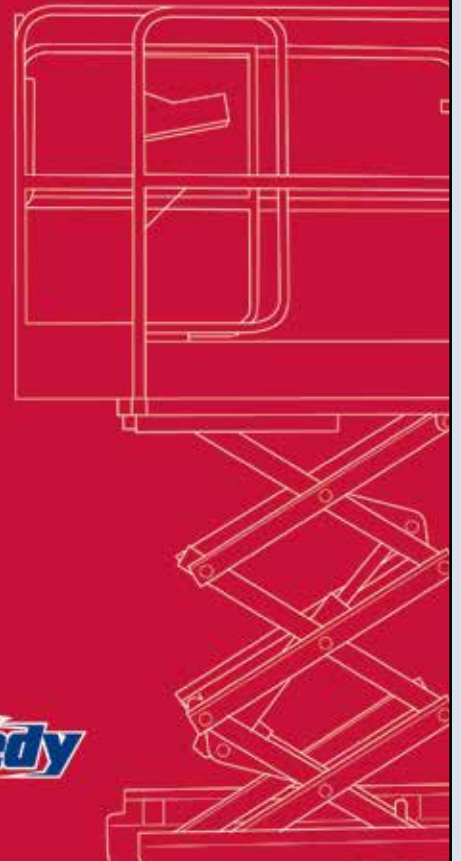


# We know equipment We know training

The UK's No.1 equipment hirer also trains over 1000 delegates a month



0845 604 6682  
speedy.training@speedyservices.com  
www.speedyservices.com



Haydock Park  
May 14th & 15th 2014

## Don't miss the UK's number one lifting event

the only specialist equipment event for the UK and Ireland

email the Vertikal Team at [info@vertikaldays.net](mailto:info@vertikaldays.net) UK Office +44 (0) 8448 155900

[www.vertikaldays.net](http://www.vertikaldays.net)



...new PASMA village..Lorry Loader workshops..IPAF safety demonstrations..Crane and Access demonstrations...

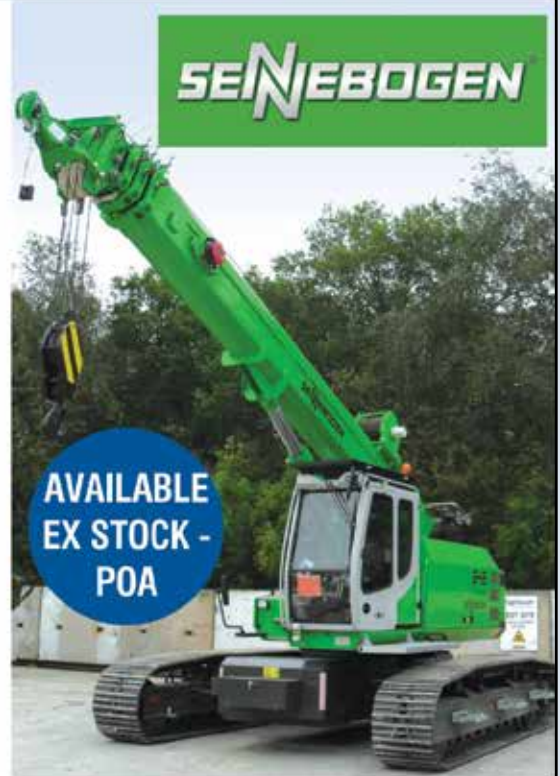
# FOR SALE 643 RHD Ex demonstration Telescopic Crawler Mounted Crane

- YOM 2011 – Hours Approx. 175
- Designed and manufactured in Germany
- 42,500 Kg machine weight
- High quality, reliability and good re-sale values
- Deutz diesel engine
- Multi cab with sliding door and side step
- Triple grouser track pads
- Tilttable 20 degree cab
- Safety check valves on boom and telescopic cylinders
- 30 metre main boom
- 4 piece telescopic boom
- Daily checks and refuelling from ground level
- Rayco-wiley SLI fitted

*Servicing and Supplying Specialist Equipment since 1974*

**HASSELL**

**E.H. Hassell & Sons Ltd** (Sennebogen UK and Eire dealer)  
 Alderflat Drive, Newstead Industrial Estate,  
 Trentham, Stoke on Trent, ST4 8HX  
 Tel : 01782 644299 Fax : 01782 657255  
 Email: info@hassells.com Web: www.hassells.com



**SENNEBOGEN**

**AVAILABLE EX STOCK - POA**

## Kran & Bühne

DAS MAGAZIN FÜR KRAN-UND ARBEITS-BÜHNEN-ANWENDER

### Ihr Vorteil!

Um leistungs- und wettbewerbsfähig zu bleiben, benötigt die Industrie gerade bei härteren Marktbedingungen hochqualifizierte und ihre Märkte betreffende Informationen. Diesem Verlangen kommt Kran & Bühne mit praxisorientierten Artikeln nach, die dem Leser helfen, fundierte Entscheidungen zu treffen. Die Artikel werden von einem erfahrenen, international und in Deutschland tätigen Journalistenteam verfasst. Kran & Bühne liefert dem Leser harte Fakten darüber, welche Ausrüstung für welche Einsätze geeignet ist, sowie Neuigkeiten und Baustellenberichte.



Name/Vorname: \_\_\_\_\_  
 Firma: \_\_\_\_\_  
 Umsatzsteuernummer (nur bei Firmen) \_\_\_\_\_  
 Straße/Postfach: \_\_\_\_\_  
 Postleitzahl/Ort: \_\_\_\_\_  
 Land: \_\_\_\_\_  
 Tel: \_\_\_\_\_  
 Fax: \_\_\_\_\_  
 E-mail Address: \_\_\_\_\_  
 1. Unterschrift des Abonnenten: \_\_\_\_\_

Ich wünsche folgende Zahlungsweise:  
 Bargeldlos per Bankeinzug (nur in Deutschland)  
 gegen Rechnung

Kontonummer: \_\_\_\_\_  
 Bankleitzahl: \_\_\_\_\_  
 Geldinstitut: \_\_\_\_\_  
 Firma: \_\_\_\_\_  
 Postleitzahl/Ort: \_\_\_\_\_

Hiermit bestätige ich, dass die Abbuchung des jährlichen Abo-Betrages von € 26.00 für o.g. Firma/Anschrift vorgenommen werden kann.

2. Unterschrift des Abonnenten: \_\_\_\_\_

**Abonnieren Sie jetzt einfach und bequem!**  
 per Fax: (0761) 88 66 814  
 oder per Post: Kran & Bühne  
 Sundgauallee 15 D-79114 Freiburg  
 Tel: (0761) 89 78 66-0 Fax: (0761) 88 66 814  
 E-mail: info@Vertikal.net www.Vertikal.net

**Vertikal**.net







V14953 - Snorkel S1930E - 2006  
Electric - 7.60 Mtr. - 342 Hrs.  
€ 3.250



V14120 - Skyjack SJ3220 - 2003  
Electric - 8.10 Mtr. - 224 Hrs.  
€ 2.950



V14170 - Haulotte Compact 8 - 2005  
Electric - 8.20 Mtr. - 264 Hrs.  
€ 3.250



V15195 - Haulotte Compact 10 - 2005  
Electric - 10.14 Mtr. - 650 Hrs.  
€ 4.250



V15109 - JLG 3246ES - 2007  
Electric - 11.60 Mtr. - 242 Hrs.  
€ 7.750



V15206 - Upright 66907 - 2000  
Diesel 4x4 - 10.20 Mtr. - 1804 Hrs.  
€ 3.500



V15287 - JLG 33RTS - 1999  
Diesel 4x4 - 12.06 Mtr. - 4442 Hrs.  
€ 4.250



V15368 - Haulotte C12DX - 2005  
Diesel 4x4 - 12.15 Mtr. - 2214 Hrs.  
€ 8.500



V14042 - Liftlux SL 110/20 - 2001  
Diesel 4x4 - 13.30 Mtr. - 2703 Hrs.  
€ 3.750



V14983 - Genie GS4390RT - 2003  
Diesel 4x4 - 15.11 Mtr. - 1329 Hrs.  
€ 10.500



V15379 - Haulotte STAR 10 - 2007  
Electric - 10 Mtr. - 163 Hrs.  
€ 10.500



V15222 - JLG E300AJP - 2001  
Electric - 11.14 Mtr. - 983 Hrs.  
€ 9.000



V14800 - Genie Z30/20N - 2002  
Electric - 11.14 Mtr. - 1069 Hrs.  
€ 9.750



V15141 - Manitou 120AETJ 3D - 2003  
Electric - 11.95 Mtr. - 971 Hrs.  
€ 10.500



V15136 - Niftylift TD120TN - 2010  
Bi-energy - 12.20 Mtr. - / Hrs.  
€ 18.500



V14339 - JLG 450AJ - 2007  
Diesel 4x4 - 15.72 Mtr. - 1326 Hrs.  
€ 21.500



V15032 - Genie Z45/25JRT - 2001  
Diesel 4x4 - 16 Mtr. - 4692 Hrs.  
€ 11.500



V15090 - Haulotte HA18PXNT - 2004  
Diesel 4x4x4 - 17.30 Mtr. - 3173 Hrs.  
€ 14.500



V15061 - JLG 600AJ - 2006  
Diesel 4x4 - 26.38 Mtr. - 3947 Hrs.  
€ 42.500



V15245 - Genie Z135/70RT - 2006  
Diesel 4x4x4 - 43.15 Mtr. - 3859 Hrs.  
€ 82.500



V15236 - Genie S45 - 2001  
Diesel 4x4 - 15.70 Mtr. - 3465 Hrs.  
€ 10.500



V13346 - JLG 860SJ - 2006  
Diesel 4x4 - 28.21 Mtr. - 3578 Hrs.  
€ 46.000



V15213 - Genie S105 - 2006  
Diesel 4x4x4 - 34 Mtr. - 3401 Hrs.  
€ 75.000



V14582 - Genie S125 - 2001  
Diesel 4x4x4 - 40.15 Mtr. - 5169 Hrs.  
€ 42.500



V13870 - JLG 1350SJP - 2004  
Diesel 4x4x4 - 43.15 Mtr. - 4870 Hrs.  
€ 67.500



# Easi UpLifts

for more information  
go to our website



Genie GS-3246

2006

€ 8,750



Genie Z-34/22N

2005

€ 17,500



Genie S-45

2005

€ 23,000



Genie S-85

2005

€ 49,000



Genie S-65

2005

€ 33,000



Genie Z-80

2005

€ 49,000



Skyjack SJ-6832

2007

€ 14,500



Skyjack SJ-9250

2007

€ 18,950



Genie S-125

2008

€ POA

More than 2500 machines available ex. our Irish / UK / Slovak & Hungarian depots

For further information contact Patrick McArdle on



+353 877 975 919 or via email



patrick.mcardle@easiuplifts.com

the access specialists

www.easiuplifts.com



STEIGER® T 380



STEIGER® T 460



STEIGER® T 630



STEIGER® T 400 **NEW!**



STEIGER® T 540



STEIGER® T 720



Visit us at



March 4-8, Las Vegas - USA  
Booth No. 3200

and discover the benefits of our

**HEIGHT**  
performance  
truck mounted platforms