

Do you receive a hard copy?

Would you prefer to receive your own personal copy of the printed version of **Cranes & Access**? Then register on-line now for your personal subscription. Cranes & Access: The Lifting Professional's magazine. www.Vertikal.net/en/journal_subscription.php

Download complete issues

Laptop users: Download complete issues of Cranes & Access or **Kran & Bühne** to read when you have the time. Using the latest version of Adobe Acrobat you can search for specific words or names in the issue or even have your PC read the articles out loud to you while winging your way across the Atlantic (or wiling away the hours on the Motorway!). Cranes & Access: www.Vertikal.net/en/journal.php
Kran & Bühne: www.Vertikal.net/en/journal.php



Do you read German?

Do you need to keep up to date with what's happening in the German, Austrian and Swiss lifting industries? Then our sister magazine, Kran & Bühne, is the magazine for you. Subscribe now to Germany's leading publication for the crane and access industries and keep up to date with the latest news (published in German). www.Vertikal.net/de/journal_subscription.php



Have you registered for email alerts?

When major news breaks in the lifting world, be the first to hear about it ..Free! News bulletins by e-mail straight to your mailbox. Register for **News Alerts** to get major head line news as it happens. www.Vertikal.net/en/newsletter.php

Use our on line access and lifting directory

Have you tried our on line Access and lifting directory? Direct links take you to supplier's web sites with one click of the mouse, with 29 product categories and hundreds of the best suppliers, this is a very convenient source guide as well as an easy way to find a lifting company's web site.

English guide: <http://www.vertikal.net/en/links.php>

German guide: <http://www.vertikal.net/de/links.php>



Central European rental companies

The world's largest on-line listing of mainland European crane and access rental companies is available to you now. Just click the link below to go to Vertikal.net/Vermieter where the bi-lingual site will guide you to hire companies throughout Europe. www.Vertikal.net/Vermieter

LOOKING FOR OUTRIGGER PADS? TAKE A LOOK AT ECO POWER PADS!



**Recycled high quality
Polyethylene materials**

No splintering

No water absorption

High resistance to impact

**Safe and durable,
returns to original shape**

Unbreakable & lightweight

**Options include: Custom sizes,
Engraving, Recessed centres, Chain handles**

**Mobile Cranes, Mobile Tower Cranes,
Loader Cranes, Aerial Work Platforms,
Concrete Pumps LOAD BEARING
5 to 300 tonnes**



Contact Bill Green at PLC Sales

tel: +44 (0)1449 674154 mobile: +44 (0)7885 020582

fax: +44 (0)1449 674173 e-mail: sales@outriggerpads.co.uk

www.outriggerpads.co.uk

working at height?



**Street
lighting pack**



Up to 23m



**Insulated
models**



**Telescopic
Boom models**



**Jackless
models**



**360°
continuous**



we've got it!

**van mounted
access platforms**

www.versalift.co.uk

1 Altendiez Way, Latimer Park,
Burton Latimer, Northants. NN15 5YT.
Tel: 01536 721010 Fax: 01536 721111
email: sales@versalift.co.uk



Total Control +

A Proven Range of Advanced,
Ergonomic, Fingertip Control Joysticks
for Remote, Safety Critical Applications

Compact - Long Life - Superb Control!

- JC120 Single-Axis Fingertip Joystick for smooth, precise control
- JC400 Multi-Axis Fingertip Joystick with long operational life
- JC2000 Multi-Axis Compact Contactless Joystick for up to 15 million operations
- All suitable for remote, transportable applications where compact size and functionality are vital
- A range of ergonomic handle and lever designs



Remote control chest pack for industrial and building lifting machinery.

The universally popular JC range of Penny+Giles joysticks provide industrial system designers the opportunity to develop remote, transportable control solutions for cranes, materials handling and agricultural applications without compromising safety and performance.

The new JC120 is ideal for use in severe environments, and where ergonomics and system integrity are paramount. Compact and low profile, this innovative, fingertip control instrument provides smooth, precise operation in one axis, with only 80% of the width of previous models and comes in a choice of two lever heights.

■ Penny+Giles Controls Ltd. 36 Nine Mile Point Ind. Est.,
Cwmfelinfach, Gwent. NP11 7HZ UK

Tel: +44 (0) 1495 202000 E-mail: sales@pennyandgiles.com



JC SERIES FINGERTIP CONTROL JOYSTICKS

Penny+Giles

A Curtiss-Wright Company

www.pennyandgiles.com



The new cranes for Arcomet will all be painted in the company's colours.

Arcomet target the UK

Arcomet, the Belgian based tower crane rental company, has targeted the UK for major expansion, in order to benefit from the growing adoption of tower cranes and the anticipated increase in demand as the UK prepares for the 2012 Olympics.

On January first, Arcomet took over the distribution of Potain tower cranes in England, Scotland and Wales, from company store, Manitowoc UK. The company has invested heavily in its new venture in order to convince Manitowoc to make the change.

First of all it lined up some of the most talented managers in the UK tower crane industry, head hunting Jerry Welford from Ladybird crane hire to set up a new company, Midland cranes, which will sell and rent Potain self erecting cranes. It then took Graham Baukham from

Select, to lead another new venture, Arcomet tower cranes, which will rent and sell Potain top slewers.

Arcomet are already present in the UK tower crane market, through its joint venture, Airtek.

To support this effort, it then set about placing orders for new tower cranes, including 230 new Potain tower cranes worth around £20/€30 million mostly for the new UK operations but also to help reduce the average age of its fleets in Germany, France and Benelux.

The order includes 100 self erectors, ranging from the Igo 13 to the GTMR 386B and 130 top slewing models, from the MC85B up to the MD365B.

Deliveries will be scheduled throughout 2006 and into 2007.

Arcomet says that it plans to be operating a fleet of between 300 and 400 cranes in the UK by 2008, split between 100 top-slewing tower cranes, and 200 to 300 self-erectors. All of the new units

will be painted in Arcomet's blue and orange house colours.

Arcomet also placed orders worth €25 million with Terex Peiner and Comedil for its North American joint venture.

Potain had been distributed by company store, Manitowoc Crane Group (UK) based in Uxbridge, led by Managing Director, Steve Barnett. Manitowoc UK will provide a support role to the new distribution companies and will retain a few key tower crane accounts.

Dirk Theyskens and Frans Wouters, managing directors of the Arcomet Group, said:

"With the upcoming Olympic Games in 2012 and a number of other major projects in the pipeline, the British market is one of the busiest in Europe at the moment. We're certain that our industry expertise and reputation, combined with the quality Potain product, will prove a winner with British contractors."

Manitou launch MT14

Manitou's new MT14, targeted specifically at the building industry, goes into production this month. The new model offers an improved load curve, with 600mm more lift height and the ability to extend a pallet 9.5 metres in front of its wheels.

The MT14 features the new "Load Place System" dual cross-gate control levers already fitted on 10 metre models, allowing the operator to control all fork or bucket

movements with one hand, resulting in improved productivity and safety.

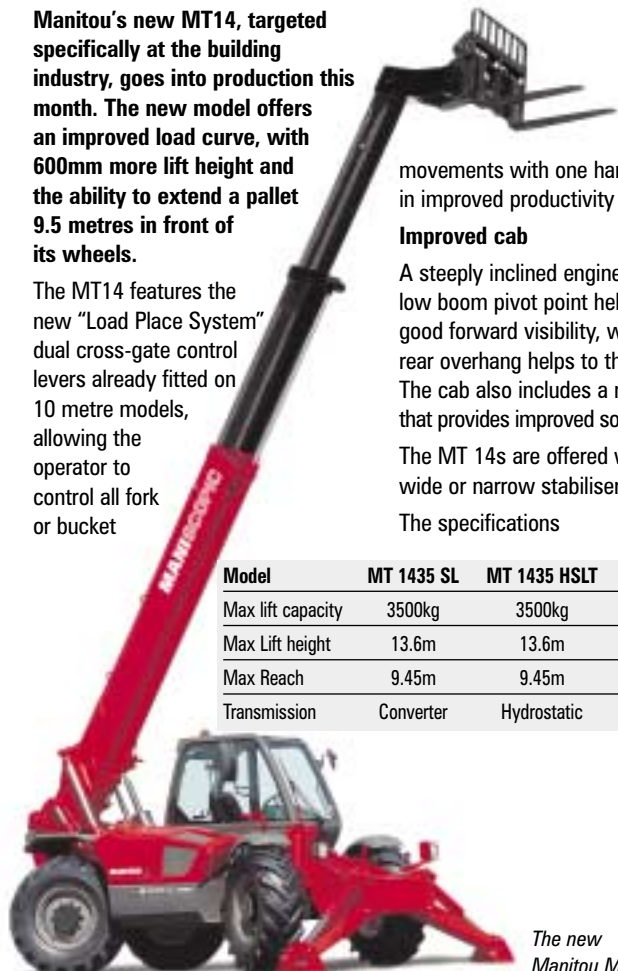
Improved cab

A steeply inclined engine cover and low boom pivot point help provide good forward visibility, while a low rear overhang helps to the rear. The cab also includes a new interior that provides improved soundproofing.

The MT 14s are offered with wide or narrow stabilisers.

The specifications

Model	MT 1435 SL	MT 1435 HSLT	MT 1440 SLT
Max lift capacity	3500kg	3500kg	4000kg
Max Lift height	13.6m	13.6m	13.6m
Max Reach	9.45m	9.45m	9.5m
Transmission	Converter	Hydrostatic	Converter



The new Manitou MT14

UpRight consolidates range and production

UpRight has announced that it is ending production of the boom lifts that it currently builds in Mexico and closing that facility. All production will in future be concentrated at its European plant in Park West Dublin.

In order to cope with worldwide supply, the company is expanding the Dublin facility by adding a further 4,000 square metres of space. The extra hall was built at the same time as the main plant but had been let on a three year lease which ended late last year.

UpRight will now focus all of its efforts on alloy scaffold towers, small scissor lifts, AB38 booms, trailer lifts and the Speed level. The AB38 and Trailers have always been built in Ireland, while small scissors have been dual sourced for some time. The company is currently setting up to build the Speed level and anticipates the first units shipping within the next 10 weeks.

Scaffold sales have been very strong for the company in recent years with production rising by over 40 percent in 2005. A new high speed automated frame production machine has been installed and was on test in December.



The Speed Level, TM12 and MX19 are three of the most popular UpRight products.



Tadano has donated a second 60tonne Rough Terrain crane to restoring the famous Moai figures on Easter Island.

Tadano to invest £36 million in production facilities

Tadano is to spend 7.5 billion yen (£36 million) on the expansion and refurbishment of its three production facilities in Japan.

The investment, which has already started, will be completed by 2008 and will increase its domestic manufacturing capacity by 30 percent. The changes will include a rationalisation of the products each plant builds. The Shido Plant will build the full line of construction cranes (largely mobiles), the Takamatsu Plant will build aerial work platforms and specialised equipment and the Tadotsu Plant, currently owned by Shikoku Kiko K.K, a Tadano subsidiary, will build truck loader cranes.

The transfer of production that is required between plants will be carried out gradually to minimise disruption. The investment will add a number of new buildings and production lines in order to raise capacity, while half the funds will be used to upgrade and refurbish tools and equipment in order to increase production efficiency. Tadano says that it will fund the capital expenditure mainly from its own funds.

.... And takes over its Chinese JV

At the same time Tadano has announced that it is investing \$10 million to increase its shareholding in its Chinese joint venture, BQ-Tadano (Beijing) Crane Co Ltd. In which it is a minority partner with Beijing Jingcheng Construction Machinery Co, Ltd (BJCM).

The \$10 million will be used to increase the company's paid up capital, which will boost Tadano's holding from 25 to 50 percent. Seiji Tadano has taken over as president from Yuan Xiaofeng, a BJCM employee, as part of this change.

Tadano aims to increase its share of the Chinese truck crane market. Demand in China for mobile cranes has grown rapidly over the past few years, from 4,000 units in 2001, to 6,300 in 2002, 9,500 in 2003 and 11,500 in 2004. 2005 is expected show a modest slow down to around 10,000 units. Tadano says that 90 percent of the market comprises locally produced truck cranes of under 25 tonnes. BQ-Tadano currently employs around 300 staff and completed 323 cranes in 2005 with a sales value of 200 million RMB.(£14.3 million).

Aerial on the comeback trail

The Tanfield group acquired Aerial Access in October 2004 as part of SEV. Since then it has transferred production to its 250,000sq ft factory in Stanley, county Durham and increased production to 70 units a month from 12 units when it took over.

It has now set off on a major growth strategy, having already doubled its international distribution network to 35 outlets up from 15 a year ago.

New distributors are based in Romania, Moscow, Turkey, Lithuania, Latvia, Greece, Cyprus and Saudi Arabia. Aerial currently exports around 90 percent of its production, with the USA and Australia being its largest markets. It is now intent on winning a share of the UK/Ireland access market, currently Europe's largest.

....And announces a JV in China

The Tanfield Group has signed a memorandum of understanding, setting up a joint venture agreement with Chinese access equipment manufacturer, Wuhan Fachman Industrial Limited.

Under the terms of the agreement a joint venture company, Aerial-Fachman, Ltd will be established in China, and will manufacture and market certain products from the range of Aerial access equipment. Whilst initially targeting the Chinese market, Tanfield says that it may ultimately source equipment for certain export markets, from the joint venture company, particularly where shipping costs make it advantageous to do so.

(See www.vertical.net for full story)

The Tanfield group is expanding its Aerial business.



Grove launch new 80 tonne AT

Grove is launching a new 80 tonne four axle All Terrain crane, the GMK4080-1; the new model replaces the current GMK4075-1 on which its chassis is based.

The GMK4080-1 is more compact than the 4075, with a shorter overall length and less boom overhang, it incorporates a new Megaform six section 51 metre Twin Lock boom and will have all wheel drive and steer as standard.

The new crane will lift 6.6 tonnes on its 51 metre fully extended main boom, at a radius of 20 metres. A hydraulic 15 metre luffing swingaway and six metre extension, takes the maximum tip height to 75 metres.

The GMK4080-1 is configurable in both 'Taxi' and 'Maxi' modes. In 'Taxi' mode, it can carry 9.3 tonnes

of counterweight, the 15 metre hydraulic swingaway extension and hook block and still remain within 12 tonne axle loads.

In its 'Maxi' configuration, which is likely to be the one specified for the UK market, it can travel with its maximum 19.3 tonnes of counterweight, and the extra six metres of jib extension.

The 4080-1 runs on 16.00 R25 tyres and features the same ZF Fastronic transmission and Mercedes-Benz engine as the 4075-1 but with the addition of a two-step transfer case, to allow better agility at lower speeds.

The overall length is 12.5 metres with a front overhang of 1.8 metres. The first two units are destined for German haulier, Grohmann.

The new Grove GMK4080-1: further details will follow in the March issue.



MEC aerial platform sales Inc, the scissor lift producer, has purchased the assets and business rights to the telehandler range that Volvo has been developing.

Volvo, purchased the designs from UpRight in 2002 but latterly decided against entering the telehandler market. The assets include 10 finished units, and enough complete kits to build between 20 and 30 units, with partial kits for a further 20 to 30.

UpRight had engineered the products from scratch with both high and low, boom configurations. Volvo completely redesigned them, maintaining the basic structure and features, but converting the designs to metric and adding European componentry. They also revamped the cab and engine areas as well as improving "fit and finish".

The deal includes all production fixtures and tooling. Jim Tolle of MEC told Cranes&Access that, "essentially the telehandlers are now a European product that will work for the American market".

Models will be on display at the ARA/rental show in Orlando in

February and the range will initially include the TH60 and 80 with 6 and 8,000 lbs lift capacity and 41.75ft /12.7 metre lift heights. A 10,000lbs TH 100 will follow shortly afterwards with a smaller TH40 and 50 further down the road if demand justifies it.

The telehandlers will be assembled in the MEC plant in Selma, originally owned by UpRight.



The Volvo telehandler started off as an UpRight machine.

Nationwide 20 Arsenal 0

Arsenal football club, will move into its brand new 60,000 seat Emirates stadium for the 2006/2007 season, the project, unlike the Wembley stadium, is on schedule and has now reached the fitting-out stage. Nationwide Access has supplied a fleet of 20 platforms to the electrical contractors Goodmarriott and Hursthouse. The aerial lifts are also being used on the mechanical work and glazing.

A narrow scissor ideal for wiring lights on the new Arsenal stadium

The units include Genie and Upright diesel and electric powered scissor lifts with 26 to 33 ft working heights and 45ft Bi Energy articulated booms. They are being used to install electrical systems and containment and to assist with external remedial works, including fixing and snagging on the exterior glass panels.

The stadium, in Islington, was named the Emirates Stadium, after Arsenal signed the biggest club sponsorship agreement in English football history, with the Dubai-based international airline - worth £100 million. The main contractor is Sir Robert McAlpine Ltd.

In addition to electrical fitting out work, the units are working on glazing.



John Ball (L) and Harry McCardle (R) agree a new order for 42m Falck Schmidt Falcon lifts, which will be part of its new niche re-rent fleet.

Easi UpLifts to open in London

Easi UpLifts the Dublin based Access, telehandler and industrial crane rental company has told Cranes & Access that it plans to open a new location in the south of England within the next six months.

The company operates five locations in Ireland under the Height for Hire brand, while its sales and rehire division trades as Easi Uplifts as does its Scottish operation in Bellshill. The Southern location will concentrate on speciality equipment including large self propelled booms, of 80ft and over, and niche products such as its fleet of 42 metre tracked Falck-Schmidt Falcons and crawler mounted Aichi booms.

John Ball of Easi-UpLifts said that it plans to make its large inventory of new booms and speciality access equipment available to other rental companies in the UK on a re-hire basis, providing a service that allows local renters to offer such equipment without the need to invest in such specialised machines.

The company also hopes to step up its sales operation which is now offering used equipment as young as 2004. With plans to sell over 500 used lifts from its fleet in 2006. Easi-Uplifts has appointed an agent to find a suitable property and is currently recruiting staff to manage the Southern operation.

391 years of service

Long serving employees at Cork based William O'Brien crane hire, recently celebrated a combined service of 391 years.

Michael Ryan, John O'Leary, Michael Cotter, Gerard O'Keefe, John Keigher, Sean Hurley, Tony O'Connor, Pat Collins, Michael O'Sullivan, William O'Brien Jnr, William O'Brien Senior (in cab), missing from photo, Robert Kiely, and Joe McNamara.





The new Terex AC55-1 to be launched at Intermat.

Terex to launch AC55-1 at Intermat

Terex will launch an AC55-1 at Intermat in Paris next April, the improvements over the AC55 include a new boom telescope system, which retains its full power feature for fast extension but is substantially lighter. The lighter boom offers some handy lifting capacity improvements, particularly at mid range radii, along with lower axle weights.

The 40 metre boom length remains, but a new hydraulically offsettable swingaway boom extension, with a length of eight or 15 metres is now available.

Terex claim that its full power boom provides a 50 percent faster extension time to full height, compared to pinned booms. While also allowing full telescoping of the load.

The AC 55-1 with 16:00 tyres, can travel with 5.15 tonnes of counterweight, the 15 metre boom extension and hook blocks, while still offering 12 tonne axle weights.

Company owner gets 18 months

Construction company proprietor Wayne Davies of A & E Buildings, was sentenced on January 20th at Hereford Crown Court to 18 months in prison, after being found guilty of a breach of the Health and Safety at Work Act in failing to ensure the safety of employees. He also pleaded guilty to a single charge of providing a telehandler and equipment that was not properly maintained, breaching Regulation five of the Provision

and Use of Work Equipment Regulations (PUWER).

Employee, Mark Jones aged 40, from Ludlow, was working on the construction of a steel framed barn in Kinver, South Staffordshire. He was using a 'home-made' basket balanced on the forks of a telehandler both of which belonged to Davies. The telehandler toppled over, throwing Jones 7.5 metres to the ground, he died in hospital from his injuries, a few days later.

Full story on www.vertikal.net and page 12 of C&A December

Hird trains 15,000th

Peter Hird & Sons has recently trained its 15,000th operator since launching its training centre in 1990. The crane, access and machinery moving specialist offers a wide range of plant courses and serves a blue chip customer base including: MFI, Kimberly-Clark, Laing O'Rourke and BP Chemicals. It is accredited to offer CPCS/City & Guilds, IPAF, RTITB, eCITB CCNSG, CIEH and PASMA courses, covering aerial platforms, working at height, earthmoving, cranes, slinging and signaling, lifting management, health and safety and forklift trucks. The company also runs NVQ courses in specialised plant and machinery operations.



Peter Hird has trained 15,000 operators

Seven axle Spierings

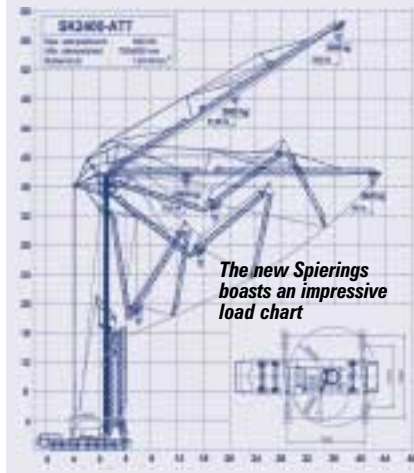
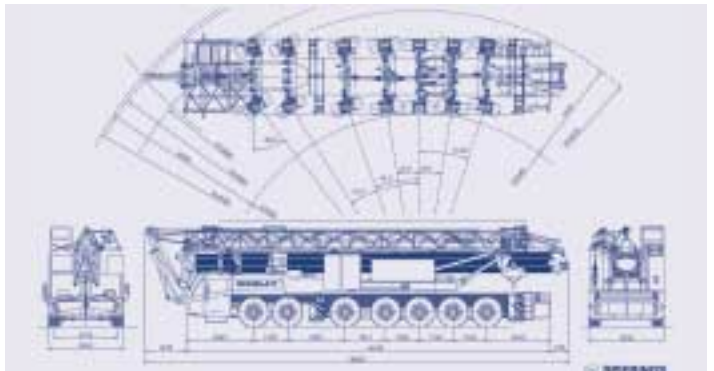
Spierings, the mobile self erecting tower crane specialist, is working on a new seven axle, heavy lift model, the first units of which are scheduled to ship at the end of the year.

The new crane will be designated the SK2400-AT7 and its key attributes will be lifting capacities almost double that of the company's current flagship, the six axle SK1265-AT6. The first units have already been sold, with Dutch based crane hirer Verschoor taking the first unit.

Much of the structure for the new crane has been taken from a design the company developed in 2001 for a crawler mounted model. That concept never saw the light of day, due to a lack of demand. However one of its key features was a shorter jib with higher lifting capacities and this has now been incorporated into the SK2400-AT7.

The new crane will offer five tonnes of lifting capacity at a 42 metres radius, with an under hook height of 36 metres. Or it will take five tonnes to a 56 metre height at 36 metres radius. The maximum lifting capacity is 18 tonnes at around 13.5 metres.

The new seven axle Spierings has similar dimensions to the current six axle model.



The new Spierings boasts an impressive load chart

It will handle up to nine tonnes at a 46 metres height and 22 metres radius. The lift chart is preliminary, but the company says that if it changes it will be to the positive.

The chassis is similar to the current six axle model, with the extra axle located in front of the current front axle. Axle loads will be 12 tonnes and the cranes overall length is only half a metre longer than the six axle unit, at 16.865 metres, thanks to a shorter front end boom overhang.

The first units are unlikely to ship much before year end 2006 but "the phone has hardly stopped since we announced this model on our 2006 calendar" said Bob Bruijsten of Spierings. So far over 50 units of the company's six axle unit have been shipped.

Two Liebherr LRS for Saigon

Liebherr has shipped two LRS 645 reach stackers to Saigon New Port's Cat Lai Container Terminal in Ho Chi Minh City, the first LRS in Asia.

The LRS 645 were chosen for their ability to stack containers up to six high and pick containers from second and third rows without removing containers in the front row.

The two machines are equipped with exact load and outreach indication, together with software that allows the operator to

automatically move the container on a fully horizontal and/or vertical load path.

A similarly spec'd LRS645 to the Vietnam units at work in St Petersburg.



Didcot select 60ft JLG

The Platform Company was called upon by Didcot Power Station in Oxfordshire when it was looking for a new aerial work platform. After a full site survey several solutions were proposed, after due consideration, a JLG 600AJ, self propelled articulated boom was purchased.



Platform and jib rotation has proved a useful feature.



External maintenance of enclosed cooling tower pipe-work at Didcot Power Station.

Didcot had a wide range of work at height requirements to satisfy. The JLG 600 has proved ideal with its rough terrain chassis and versatile working envelope, thanks to its telescopic riser, articulated jib and full platform rotation. The lift is used for a range of maintenance tasks on lighting, security cameras, and cooling stacks as well as gaining access to over head gantry cranes at the plant.

Paul Jackson, Mechanical Technical Officer for RWE npower says, "Until now we've always hired in powered access, but with the help of the Platform Company our maintenance programme has become even more cost effective. It's also hugely convenient to have the machine ready on site whenever we need it."

Skyjack launch new compact RT

Skyjack is to launch a new, two model, compact Rough Terrain scissor lift family when it celebrates its 20th anniversary at this years ARA convention and Rental Show in February. The new Compact 6826RT and 6832 RT models are both 1.7 metres wide, with platform heights of eight and 9.8 metres (26 and 32ft) respectively. Standard kit includes four wheel drive and a 1.5 metre roll-out deck extension. Options include independent leveling outriggers.

Key features are:

- Drivable at full height
- Cross over Symmetrical four wheel drive
- 90 degree swing out engine tray
- Up to 50% gradeability
- Low profile foam filled tires
- Tilt out hydraulic manifold
- Up to 550 kg. Platform capacity

CE versions of the new models will be available to ship during the third quarter of 2006.

The new Skyjack Compact 6826 with outrigger option



HEWDEN

total rental solutions

Back to work with
Hewden...

Number 1
in the UK
and Europe



call now...

0845 60 70 111

www.hewden.co.uk

Pierre Saubot gets a PAL

Facelift, the Hickstead based access specialist, had a special visitor in December in the form of Pierre Saubot, current president of the International Powered Access Federation and chairman of the Haulotte group, Europe's largest powered access manufacturer.

Saubot attended an IPAF scissor lift operator training course and scored high enough in the written and practical tests to qualify for his PAL card-operators licence!

At the same time he took the opportunity to hand over the first batch of Haulotte scissor lifts for Facelift. The company did not comment on any possible connection between the training course and purchase.

Gordon Leicester (L), managing director of Facelift and Pierre Saubot, with the new machines outside Facelift's Hickstead head office.



Catinot to open Riwal France

Jacques Catinot, who until late last year headed Genies sales, marketing and distribution in Europe, has joined Riwal, the Dutch based crane and access rental company, in order to set up Riwal France. The company is already operational, from shared premises near Chartres. The aim is to have the new business properly established by mid year, in a building and location specific to its needs and suitable for the long term.

At the same time the company announced that it is spending €80 million on new access equipment. The biggest slice of this order is €60 million (\$72 million) for new JLG lifts, one of the largest single orders JLG has ever had and certainly the largest it has ever received from a European company. Other orders include 40 large scissor lifts from Holland Lift and a mix of 100 booms and scissors from Genie, many of which are destined for France.

Doran Livnat and Dick Schalekamp told Vertikal.Net that the company "does not intend to create a storm in France", "there is enough room for us to find a place without unsettling anyone" they said "it is not our aim to 'buy-into' the market. France was not in our sights for this year but in Jacques Catinot we saw the type of person that we know will be successful as a partner in the Riwal family. France, like Denmark is also only a trucking day away from our base here at Dordrecht".

The two also stressed that it had worked with JLG to plan the deliveries into its production schedule to avoid causing supply problems for others, while meeting Riwal's expansion and fleet renewal plans. An exclusive interview with Doran Livnat and Dick Schalekamp is on page 41.

Palfinger launch new remote control system

Palfinger has launched two alternative new radio remote controllers for its loader cranes, in partnership with Scanreco and Hetronic.

Customers will be able to choose between the two mutually compatible systems. The company says that the Paltronic 50 system offers a full specification in a compact package and includes an easy-to-use LED module as standard.

Using its "Paldiag" crane software the operating levers can be assigned control functions according to individual preferences. With ability to define the maximum speeds of individual functions along with ramp up and down levels. Specific functions can be set up for "two-hand" operation for additional safety. The new

system has been designed to take a second receiver to enable additional equipment such as hydraulic extending outriggers to be incorporated. It also permanently monitors the digital status of the system, displaying an error code on the LED readout should any performance deviations be picked up. Palfinger is providing a full two year warranty, claiming to be the first manufacturer in the sector to do so.

The Scanreco version of the new Palfinger radio remote controller



Terex Telehandlers consolidated with Genie

The European TerexLift, telehandler business, is to move from the Terex construction group to the Aerial lift sector. The North American telehandler business has reported into Genie for over a year.

At the same time, Roger Brown, currently vice president North American sales for Terex Aerials, has been given the additional responsibility of overseeing the Strategic Accounts Group for Terex. The group is responsible for managing all activities with large international accounts. Brown will continue to be responsible for Genie and the Terex Construction products in North America, but will delegate more day to day activities to his management team.

K LIFT

CRANE HIRE AND LIFTING SERVICES

- 40, 50 and 60 Metre Self Erecting Tower Cranes
- Full Contract Lift Services
- Mobile Telescopic All Terrain 20T to 200T Cranes
- Site Visits with Qualified Appointed Persons Accredited up to BS7121 Standards
- Nationwide Service with Depots Throughout the UK



Specialist Lifting Solutions for All Your Requirements

For more information please contact one of our strategically placed depots available nationwide on the freephone number below

FREEPHONE
0800 389 5646



New Mini Heila crane

Italian crane and access company, Italmec will launch a new one tonne capacity mini crane, the Heila "HRC 999".

The crane is still going through its testing and evaluation programme but includes a four section full power boom, with a hook height of up to nine metres and a maximum radius of seven and a half metres.

It will weigh less than two tonnes and easily pass through a standard domestic doorway. Key specifications will be as follows:

Outrigger footprint 2.7 x 2.7 m

Overall length 3.1 metres

Overall width 780mm

Total weight 1800 kgs

The Heila HRC 999 mini crane



Deep frozen telehandler



A Merlo telehandler at the Dome-C base

The Dome-C Antarctic base, located at an altitude of 3,200 metres is home to the Italian scientific expedition to the South Pole. With average temperatures of -35 °C dropping to as low as -75 °C in winter, the base and its equipment has been specifically designed and developed to operate under extreme conditions. Among the range of machines used to help with the teams experiments is a new Merlo Panoramic P 40.14 K. Although the machine is based on the standard model, it features a host of modifications and attachments to cope with the working and climatic conditions that go with the permanently frozen ground, such as dual tyres. The machine is used for the assembly of basic structures and for the loading and unloading of air freight.

Leonardo

the Italian genius

Safe, comfortable and cost effective: the self-propelled LEONARDO replaces the old mobile workstand!

Easy-to-transport and easy-to load: absolutely the simplest to get onto every work place!

Unique and fully tested technology, the result of ten-years' experience!
Ideal for even the most cramped working environments!

www.braviisol.com

BRAVI

BRAVIISOL divisione meccanica
S.S. Adriatica, 16 Km 31-4,600 - 60022 Castell'alfardo (An) Italy
Tel. +39.071.7819090 - fax +39.071.7819355 e-mail: info@braviisol.com



Panther to the rescue

When aircraft rescue specialist, Support Air was commissioned to rescue a Boeing 767 stranded in the Dominican Republic, after crash landing. It called on Panther Platform rentals to provide a 23 metre Haulotte H23, boom lift and two 8.5metre Skyjack scissors from its Birmingham branch.

The fleet was air freighted on the day of hire to the scene of the immobilised aircraft to provide access for the repair team. The £60m passenger aircraft had sustained significant damage, the lifts worked in conjunction with a locally hired Tadano truck mounted crane.

The lifts remained on location for three months during which time they performed without a hitch, probably just as well given the distance involved for a service call out!



Platform Rental extends its territory to the Dominican Republic.

Nationwide Invest again

Nationwide Access, has announced a £14 million investment in new aerial lifts and support vehicles for the first half of 2006. The company has ordered 174 self-propelled booms, scissors and truck mounted lifts from Genie, Skyjack and CTE.

The 23 new CTE truck mounts, the first for Nationwide, are all on 3.5 tonne chassis, aimed at the self-drive market. The order is worth over £1 million. Two CTE Z-32, 32 metre truck mounts on 7.5 tonne chassis have also been ordered.

The self-propelled orders include 50 Skyjack diesel scissors, worth in excess of £1.5 million and 100 Genie booms and diesel scissor lifts with a value of around £4 million. Most of the new machines will expand the existing fleet. "Very few of these are replacements", said Nationwide's marketing manager Scott McCall. "We are growing the fleet by investing in the types of equipment that are in continuous demand and that customers struggle to source easily. These are mostly large machines aimed at the expanding construction and refurbishment markets".

The order includes four Genie 43 metre Z135/70 articulated boom lifts.

A further £2 million of the spend will go on special fleet refurbishment, upgrading units that are now four to five years old, with new control boxes, new baskets, and replacement of components that typically cause downtime as well as upgrading paintwork where necessary.

28 new purpose built DAF delivery trucks will consume a further £4.2 million. The trucks include a custom Shawtrack body, designed with input from 20 Nationwide drivers and incorporate real time tracking. The aim is to bring more deliveries in house to help with its "pre-10" "pre-12" and "evening" delivery plans. The balance of the investment is a £1 million spend on a new fleet of service engineers vans.



Nationwide is ramping up its investment plans.

Kavanagh add Spierings

Kavanagh Crane Hire of Wexford, Ireland has purchased its first new Spierings mobile self erecting tower crane a five axle SK599-AT5. The crane follows the earlier purchase and evaluation of a used four axle SK477-AT4.

Bob Bruijsten (L) hands the new crane to Paul Kavanagh.



Visit: www.wl-industries.com

Quality

Innovation

Reliability

Odense + 45 66 13 11 00 Holbæk + 45 59 45 55 00

WORLDLIFT INDUSTRIES AS

The perfect combination

DENKA LIFT AND FALCK SCHMIDT

WORLDLIFT INDUSTRIES AS is the result of the merger of Denka Lift A/S and E. Falck Schmidt A/S. Both companies have always been known for their high quality products. Together they are the perfect combination.

FALCON SPIDER/NARROW Compact track or wheeled lifts developed for indoor and outdoor use. Down to 0.79m wide you can access everywhere. Working height from 19 to 55m.

DENKA TRAILERS

Working height from 12 to 30m. The new DLX15 is the only trailer mounted lift with jib-arm, thus combining the best of articulating and telescoping principles.

FALCK SCHMIDT SERIES

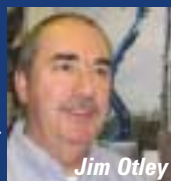
Truck mounted, total weight 3500kg with working heights up to 21m, as well as highly sophisticated utility platforms mounted on truck or van.

- **AMP Access Ltd**, the South West country powered access hirer has opened a fourth sales and rental depot in Gloucester.



The AMP Gloucester team

- **Red diesel duty rises 23%** The treasury increased the UK duty on red diesel from 5.22p a litre to 6.44p in December, an increase of 23.4%
- **US Marine Corps**, has ordered up to 130 special military **Terex** All-Terrain cranes based on the AC-50-1.
- **Kobelco cranes** up 35% Kobelco shipped 230 crawler cranes in the first half of 2005 compared to 170 in 2004, an increase of 35 percent.
- **Mark van Oosten** has sold his 50 percent share in **Omega lift** to Leen Stehouwer, his partner and owner of manufacturer **HTN**.
- The **MaxiKraft Group**, of Germany has ordered 73 mobile cranes from Liebherr, the largest German crane rental order in over 10 years.
- **IPAF** has appointed **Gil Male**, previously a principle inspector with the HSE as its Technical Officer.
- The inaugural meeting of the **European Rental Association (ERA)** was held in Brussels on January 24th.
- **Ramirent AB**, the Swedish affiliate of Ramirent plc, has agreed a sale and leaseback deal on 18 of its Swedish locations.
- **Brandon Hire** has given permission for **Charles Skinner** and **Chris Sims**, to "explore a management buy-out."
- **David James**, most recently with Nationwide, retired from the powered access industry at the end of December aged 62.
- **Genie** has appointed **Jim Otley** as managing director for Europe, North Africa and the Middle East.
- **A-Plant preferred by Morrisons.** A-Plant has won a 17 month preferred rental supplier deal with Morrisons construction, for a range of plant from telehandlers to tools and lifting gear
- **Instant Holland** of Badhoevordorp near Amsterdam, has acquired **Stammis BV** of Heerhugowaard in northern Holland.
- **Terex Cranes** has opened a new Benelux sales and support office in Moerdijk Holland.



Jim Otley

- **The Lavendon group**, owner of Nationwide Access, Zoom and Rapid Access has forecast revenues, roughly eight percent down on 2004 at £100 million.
- **Michael Falck Schmidt** resigned as managing director of **Worldlift Industries** effective December 31 2005. He has been replaced by **Ernest Fuller**.
- **IPAF** issued a record 53,646 **PAL** operators cards last year, almost 25 percent up on 2004.
- **Nationwide Access**, has appointed **Chris Wraith** to the newly-created position of safety, health and environment advisor.
- **Haulotte's**, Dakar 2006 attempt came to an end when the pick up driven by Miguel Prieto and Fédérico Montes crashed into a dune during stage 4 of the rally
- **JLG** has appointed **Joe Dixon** as president of **JLG Service Plus**.
- **Terex Corp** has appointed **Katia Facchetti** to a new position of senior vice president and chief marketing officer, reporting to **Ron DeFeo**.
- **Imperial Crane services** and **Lifting Gear Hire** joined forces to remove a Southwest Airlines plane from the intersection of West 55th Street and Central Avenue in Chicago, following a crash.



Imperial and LGH rescue plane from the streets of Chicago

- **JLG** has re-opened its 12,000 sq m facility in Bedford, Pennsylvania, with local government support. The plant will be home to the Commercial Solutions Group ("CSG") that focuses on producing and selling products for the commercial and industrial markets.
- In a change to its earlier decision, the **American Rental Association** has moved the venue for its 2007 convention and **Rental show** from New Orleans to Atlanta
- **Alimak-Hek** has acquired the manufacturing business of **Champion Elevators**, the Houston based manufacturer of rack and pinion construction hoists and industrial lifts.
- Low loader and trailer specialist **Nooteboom** has purchased the **Kennis Trailers** division of Pacton B.V. in Ommen, Holland.
- **Westbury Homes** was fined **£12,000** for failing to ensure the health and safety of one of its sub contractors.

- **Ainscough Crane Hire** has developed a new awards scheme for its depots. **Lee Sixsmith** of the Immingham depot won the award for 'Best Return on Capital Employed & Best Overall Depot'.

Lee Sixsmith accepts Immingham depot's award



- **GAM**, Spain's largest rental company has signed a €45 million contract with JCB, for the supply of Telescopic handlers, Robot skid steer loaders, mini excavators and rough terrain forklifts.
- **Hewden**, has won sole rental supplier status to the Wates Group, for the seventh year in a row.
- The EU Commission has indicated that May 2006 will be the deadline for the mandatory introduction of **digital tachographs** on new 'in scope' vehicles.
- **Manitowoc** has announced the appointment of three new regional senior vice presidents of operations: **Denis François**, will be responsible for Europe, the Middle East and Africa; **Chuck Mogg** for The Americas and **Derek Oh**, will manage operations in Asia-Pacific.
- **Samuel Walker goes into administration.** Samuel Walkers of Glasgow and Manchester has filed for protection, appointing an administrator on January 24th.
- The **LEA** Lifting Engineers Association has elected **Stuart Everitt** of **Carl Stahl Evita** to the post of Chairman.
- **Daniel Damart**, MD of **Haulotte France** and **LEV** has left the company, **Pierrick Lourdain** has taken over as MD for the two companies in addition Haulotte UK and **UK platforms**.
- **Segundo Fernandez** has been promoted to the role of assistant MD for the **Haulotte Group** and will seek a group sales and marketing director internally.
- **Manitou** will launch a 30 metre telehandler, the 360 degree MRT 3050 at Intermat in April.
- **Haulotte** has appointed **Chris Koch** to head up its North American operation.

See www.vertikal.net news archive for full versions of all these stories