



The 4,300 tonne AL.SK190 heavy lift crane fully rigged and ready for work at Earls Court, London

London's largest crane

ALE's 4,300 tonne AL.SK190 heavy lift crane is now fully rigged, tested and ready to begin work on site at Earls Court in London.

The crane will lift and remove 61 large concrete portal beams from over the London Underground lines that lie below the former exhibition centre. The beams, which supported the exhibition centre, were installed when the building was erected in 1935 and need to be removed to enable a major new development on the site. The smallest beam weighs 80 tonnes while the largest is 1,500 tonnes. The crane is rigged with 120 metres of boom and is apparently the largest crane ever to operate in London. The lifts which were due to start at the end of March will be carried out at night, after the last District Line underground train has passed through the tunnels beneath. Work is expected to conclude by the end of the year.



The new Genie SX-125XC

Genie launches SX-105XC and SX-125XC

Genie has launched replacements for its current 105ft S-105 and 125ft S-125 telescopic boom lifts, both featuring the company's new mini X chassis first seen on the SX 135XC. The new models, the SX-105 XC and SX-125 XC are more than just a chassis change though, they also have the XC dual platform capacity of 300 and 454kg with Genie's new integrated platform overload system.

Both machines feature an automatic operating envelope adjustment system, with the boom retracting smoothly when the platform reaches the extent of its range. For example, should the fully telescoped boom be lowered with more than 300kg in the platform the boom will retract as it is approaches the minimum angle permitted with that extension and capacity.

Both booms are equipped with Tier 4F/Stage IIIB diesels and a redesigned heavy-duty generator. The overall width of both machines is 2.49 metres when retracted and 3.94 metres extended. The SX-125 was shown to some customers back in September in order to obtain feedback on the key design features. The company has also revamped its 135ft ZX135 articulated boom by mounting it on the new Mini X chassis, reducing its overall operating width by more than a metre to that of the original ZX135.

Manitou acquires Terex Construction India

In late March Manitou acquired Terex Equipment Private which operates from a production facility in Greater Noida, India.

Founded in 2003, the company designs, manufactures and distributes construction equipment - mostly backhoe loaders and skid steer loaders - with revenues of around €30 million, mostly in India and Southern Asia. The deal, which includes designs, assets and the facility, is expected to complete during the first half of 2017.

Magni breaks its own record

Magni Telehandlers kept very quiet about its new record breaking RTH6.46 SH 45.6 metre/six tonne 360 degree telehandler until unveiling it at Conexpo.

Weighing in at 30 tonnes, it has a forward reach of 33.5 metres and a capacity at full height of 2,500kg. Powered by a Mercedes Tier 4 final diesel, overall width is 2.54 metres, overall length 8.85 metres, and overall height 3.2 metres - with a 7.3 metre outrigger spread. More details in the June Issue of C&A.



The new 46 metre Magni RTH6.46

UK crane and platform exemption to end



The UK is preparing legislation to require smaller cranes, truck mounted lifts and other road going specialist equipment such as concrete pumps to be subject to an annual commercial vehicle road worthiness inspection/MOT test.

The legislation is currently planned for May of this year, but would not come into force until 12 months after publication. Cranes mounted on specialist carriers that currently come under the UK's STGO rules will remain exempt from the requirement, at least for now. However industry association the CPA is pressing ahead with its voluntary inspection programme for all cranes that most crane hirer's have already agreed to sign up to.

Two new Tadano Mantis tele crawlers

Tadano has launched two new Mantis telescopic crawler cranes - the 60 tonne GTC-600 with a four section 38 metre boom and the 80 tonne GTC-800 with a five-section 43 metre main boom.

The cranes are designed for the global market, and automatically switch between load charts for level ground to those for slopes of up four degrees. More details in the May issue of C&A.



The Tadano Mantis.

80ft Hybrid from JLG

JLG has launched a new 80ft true Hybrid articulated boom lift, the H800AJ. The new machine is based on the standard 800AJ, but is completely different in terms of the power pack driving the main hydraulic pumps and the counterweight which partly consists of a substantial AGM battery pack, sufficient to operate the machine for a full shift. The AGM batteries are sealed and maintenance free.

The power pack comprises a smaller Kubota Tier 4 Final diesel - in place of the normal Deutz - coupled to a large electric motor which works as a generator to top up the battery pack when in diesel mode, with the engine also powering the hydraulic pumps. When extra power or 'grunt' is required for steep inclines or heavy mud conditions etc, the electric motor kicks in and adds the additional required horsepower to the diesel. As such it is described as a parallel Hybrid system.



The Hybrid power pack - from the pumps on the unit is the same as the diesel model



The new JLG HA800AJ

From the pumps on, the machine is absolutely standard with four wheel hydraulic drive, oscillating axle with four wheel steer option. Platform capacity is 230kg, with 16.8 metres outreach, 26.3 metres working height and an overall weight of 15.6 tonnes. The new lift will be available worldwide towards the end of this year.

Hewden auction sell out

One of the largest ever auctions of new All Terrain cranes was held at the Newark Showground in the UK at the start of March, with auctioneer Euro Auctions disposing of 127 cranes from the Hewden fleet.

Around 500 buyers and observers attended, while 15 percent of winning bids came from online buyers - in total there were 1,500 registered bidders. Crane capacities ranged from 30 to 220 tonnes - 25 of them over 100 tonnes. The sale also included accessories such as ballast, test weights, slings, mats, chains, shackles and boom extensions were also on sale.



127 ex-Hewden cranes fetched £28 million

The stars of the event were surely the two 2016 five axle 220 tonne Tadano ATF 220-G5 cranes which fetched £725,000 each, while at the other end of the capacity spectrum, a 2002 30 tonne Terex Demag City crane went for £39,000. 36 cranes were bought by UK-based companies including one of the 220 tonners, while buyers from 30 countries bought the rest. The largest overseas bidders came from the Netherlands, Finland, Oman, Australia, Chile and Japan. The sale raised a total of £28 million.

More than 500 people attended the auction - 1,500 bidders registered



The new Haulotte HA26RTJ bristles with new features.

New Haulotte 80ft articulated boom

Haulotte has launched a new 80ft articulated Rough Terrain boom, the HA26RTJ. The new boom offers an improved working envelope with 17.4 metres of outreach, 9.2 metres up and over reach and a dual platform capacity - 250/350kg - although this is optional. Four wheel drive with oscillating axle and hydraulic differential lock are all standard giving 45 percent gradeability.

The company says that boom rigidity has been significantly improved, while automatic soft stop damping added when each function reaches its full extension. In order to improve visibility the HA26 can be driven at full speed with the jib fully raised, as long as the boom and risers are stowed. It also includes Activ Shield Bar 2.0, an improved secondary guarding system, now fully incorporated into the upper controls. All of the company's latest technology is also included, such as the Activ Lighting system, Activ Screen and Stop Emissions engine interrupt, which the company says can deliver a 20 percent fuel saving.

...And a 20ft mast

Haulotte also unveiled a new 20ft mast type lift, the Star 20, in the USA, with direct AC electric drive, roll-out deck and multi-stage cylinder lift.

Certified for both indoor and outdoor work, the new machine is based on the 13ft Star 6 AC, but has a larger heavier five section mast and additional counterweight. Weighing in at 1,170kg, it features both lateral and longitudinal fork pockets and active pothole protection. At the moment there are no plans to launch this exciting new product in Europe.



The new Haulotte Star 20 for the US market

Loxam acquires Lavendon

By mid-February Loxam had acquired 91.5 percent of Lavendon's equity and applied for compulsory acquisition of the remaining shares, at the same time it applied to delist Lavendon shares from the London Stock Exchange.



New Grove telescopic crawler

Grove has unveiled the 30 tonne GCH30, its smallest telescopic crawler crane to date. It joins a range that includes the GCH55, GCH75 and GCH130. All four of which are built by Sennebogen in Germany. Deliveries are scheduled during the second quarter.

As with the other GCH crawlers they are only available in the Americas, sold through the Grove and Manitowoc dealer networks and supported by Manitowoc Crane Care. The GCH30 features a three-section 25.2 metre telescopic boom with an optional 6.5 to 13 metre offsettable swingaway extension, taking the maximum tip height to 40.2 metres. Attachments include a two-man work platform, a boom mounted hydraulic auger and a pole claw.

Deliveries will begin in mid 2017.



The new 30 tonne Grove GCH30



The Grove GCH30 features a three section full power boom.



Nationwide adds 64 spiders

UK rental company Nationwide Platforms has taken delivery of 56 Hinowa and eight Teupen spider lifts. The Hinowa Lightlift platforms include the 15.4 metre 15.70, 17 metre 17.75 MK2, 20 metre 20.10 MK2 and 25.7 metre 26.14.

The new order adds to the 36 Hinowa lifts the company purchased last year. Powered by either a diesel engine or Lithium-ion battery pack, features include 230kg unrestricted platform capacity and the ability to pass through standard single doorways. The platforms were delivered by Hinowa distributor APS. The eight Teupen units are the 31 metre Leo31Ts with a 250kg platform capacity and 17.7 metres of outreach with an overall width of 1.58 metres.



One of Nationwide's Hinowa Lightlift models

Crawler crane incident

UK contractor St James Group has reported a serious incident with a 40 tonne Hitachi-Sumitomo SCX400T telescopic crawler crane that occurred on a London job site in January. The crane was lifting a compressor when the boom dropped rapidly until it bottomed out in the horizontal position. Fortunately no one was hurt or injured. An inspection revealed that a fitting connection to a pressure gauge on the pressure side of the lift cylinder had fractured, allowing hydraulic oil to escape, causing the boom to descend.

The incident was reported to the Health & Safety Executive and a joint investigation launched by the crane owner Eagle Crawler Cranes Hire and Hitachi distributor NRC. All parties confirmed the failure of an adapter that connected the pressure transducer and gauge to the cylinder. An independent report by Penenden Engineering indicated that the failure was due to fatigue, although the part does not have a given service life.

The recent communication from the contractor stated that it wanted to bring the incident to the wider attention of crane owners and users to highlight a misconception which exists that in the event of such a failure the cylinder's Holding/Lock/Check valves will still support the boom.



A 40 tonne Hitachi SCX400T telescopic crawler crane

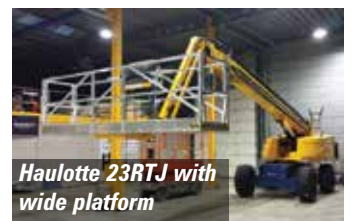
SPS expands wide platform range

Netherlands-based manufacturer Smart Platform Solutions has extended the number of boom lifts that can be equipped with its four metre extra-wide platform, and has added a five metre wide version.

SPS originally launched its extra wide platform range with a four metre aluminium unit for the 40ft JLG 400S and this and a five metre wide version have now been developed for boom lifts with articulating jibs including the JLG 460SJ, 860SJ and 1350SJP. The 86ft Manitou 280TJ straight boom and 46ft 160ATJ+ articulated boom, plus Haulotte's 69ft HT23RTJ straight boom. Platform capacities range from 230 to 270kg for the JLG and Haulotte models to 270 to 320kg for the Manitou models. The units maintain a very similar working envelope to the standard models and are aimed at cleaning or installation work on large facades or sound barriers alongside highways.



The 86ft JLG 860SJ with four metre platform



Haulotte 23RTJ with wide platform



The 85ft Manitou 280TJ with big SPS platform



The Manitou 46ft 160ATJ+ articulated boom with four metre wide platform

Snorkel material lifts

Snorkel has launched a range of six material lifts ranging from 3.5 metre/340kg capacity to a 6.9 metre/295kg capacity. The new range - essentially badged and beefed-up versions of the Lift Smart product range - falls into two families with three models in each.

The MLC line includes the 3.5 metre ML12C with 340kg capacity, 5.1 metre/318kg ML18C and the 6.9 metre/295kg ML24C. The MLM range - with a shorter mast height to pass through a standard doorway without a tilt-back system - includes the 3.8 metre ML12M with 318kg capacity, 4.4 metre/272kg ML16M and 5.5 metre/295kg ML20M. The MLM range is aimed at industrial and warehouse applications where loads may need to be moved throughout a facility.

All models feature a dual-handle, shift-on-the-fly, two-speed winch, a cable guard and heavy-duty non-marking casters. Quick-fold stabiliser legs do not require tools, making set-up easy, and non-marking wheels allow the lifts to move easily.



Snorkel ML18C material lift

Demag migrates to smaller ATs

Terex Cranes is to apply the Demag branding to some of its smaller All Terrain cranes, starting with the three axle 55 tonne AC 55-3 and 60 tonne AC 60-3. It will also be used for the new 45 tonne City crane - a Virtual Reality version of which was seen at Conexpo.

Both the AC55 and AC60 feature a 50 metre main boom, while the AC60 can be equipped with a 16 metre extension. The booms on both cranes can be lowered to five degrees below horizontal for easy rigging from the ground and outriggers can be positioned completely independently, with the IC-1 Plus calculating the load chart based on the crane's actual configuration. The cranes have an automated counterweight rigging system with optional remote controls, allowing the operator to rig and operate the crane from the ground in order to make it an easy one man operation.



The Demag AC55-3



A SIMPLE SOLUTION
ALWAYS HIDES
A GREAT IDEA



CTE ZED 21.2 JHV

PERFORMANCE:
WORKING HEIGHT 20.6 m
OUTREACH max 9.9 m
CAPACITY max 300 kg

S³ SMART STABILITY SYSTEM:
IT ADAPTS IN REAL TIME TO THE CONDITION OF USE, LOAD AND GEOMETRY, INDEPENDENTLY ALLOWING MAXIMUM PERFORMANCE IN ANY BOOM POSITION

We'll be at  outdoor area - booth 1260

Follow us on:   

CTE S.p.A.
Headquarters: Via Caproni, 7
38068 Rovereto (Trento) - Italy
Factory: Loc. Terramatta, 5
37010 Rivoli V.se (Verona) - Italy
Tel. +39 0464 48.50.50 • **Fax** +39 0464 48.50.99
info@ctelift.com • www.ctelift.com



New 58t crane from JMG

JMG Cranes has launched a new 58 tonne battery electric pick & carry crane - the MC580 - which features a chunky four-section full-power telescopic boom with boom nose mounted hook.

The four-section counterweight telescopes with the rear axle for additional capacity although it does make the crane longer. The crane has a fully equipped cab, radio remote joystick controls, a seven inch information screen, front wheel AC direct drive, rear 180 degree steer with counter rotating front wheels, allowing it to rotate on the spot through 360 degrees with full load on the hook. Options include a 30 tonne fork attachment, quick-fit front levelling outriggers and a winch.



JMG MC580

New Shuttlelift carrydeck crane

Manitowoc has launched a new 13.6 tonne Shuttlelift carry deck crane - the SCD15. Designed from the ground up for the general rental market, the SCD15 has a standard, three section 12.5 metre boom, with the option of a four-section, full-power 15.4 metre alternative. A 4.6 metre swingaway extension is also available for a maximum tip height of 21 metres with offsets of up to 30 degrees.

The boom nose can also pivot forward by up to 80 degrees for greater clearance height when lifting in low headroom environments. The operators cab is a full 127mm wider than previous models, with a split cab door with sliding glass windows, a full LED lighting package and a graphical, easy-to-learn Rated Capacity Limiter (RCL) system are also included.

Power comes from a Tier IV Final Cummins diesel, without the need for diesel exhaust fluid (DEF). Alternatives include a gas/propane engine and Tier III Cummins for export. Three mode four wheel steering is standard.



Shuttlelift SCD15

Further restructuring at Kobelco

Kobelco has announced further changes to its crane distribution organisation in South East Asia. Singapore-based Kobelco Cranes Southeast Asia will merge into Kobelco International, also based in Singapore, which will handle regional crane sales and service while Daya Kobelco Construction Machinery Indonesia will handle both crane and excavator sales in Indonesia. All regional crane and excavator companies will now report to Thailand-based Kobelco Construction Machinery Southeast Asia (previously Thai Kobelco Construction Machinery).



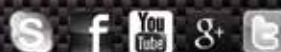
ISOLI

Full truck mounted lift range
from 14 to 36 metres



Invest in the Best!

Find out more www.isoli.com



Atlas unveils new crane

Atlas cranes has unveiled a new 4.6 tonne/22 metre loader crane, the 290.2E with eight hydraulic extensions and a maximum lift capacity of 4.6 tonnes, or 620kg at 20.74 metres.

The 290.2E has a total weight of 5.3 tonnes and offers 410 degrees of slew. The first company to take delivery of the new crane is Luxembourg-based Delvaux through Atlas dealer Carrosserie Comes.



The first Atlas 290.2E arrives in Luxembourg

Palfinger completes Solid range

Palfinger has announced six new models in its 'Solid' range with load moments of between five and 19 tonne/metres.

The models include the PK 13.501 SLD 1 and PK 13.501 SLD 3, both of which have load moments of 13.1 tonne/metres. The PK 14.001 SLD 3 which is 14 tonne/metres and the PK 14.501 SLD 5 which offers 14.5 tonne/metres. The range is made up of two further variants - the PK 13.501K SLD 3 and the PK 14.501K SLD 5. The cranes are available with up to five hydraulic extensions for an outreach of 14.8 metres.

The new cranes have been designed with an eye towards the road maintenance and municipality market, simple work which does not require special equipment. Replacing the SLD series the new cranes have a higher lifting capacity with similar or lower overall weights. They are also equipped with High Speed Extension which increases boom speeds by up to 30 percent.



Palfinger has added six more models to its Solid range



Boels has taken 21 Jekko SPX424 spider cranes

Jekkos for Boels

Netherlands-based international rental company Boels has taken delivery of a Jekko SPX424 spider crane with 20 more units on order.

The SPX424 has an 8.5 metre five-section main boom and can handle a tonne at a height of nine metres. Maximum tip height with the hydraulic telescopic jib installed is 15 metres with a capacity of 300kg. Maximum radius with the jib is 11.9 metres at which point it can lift 130kg.

Link-Belt approves synthetic cable

Link-Belt has approved Samson's new K-100 synthetic hoist rope on its full range of cranes.

Designed specifically for mobile cranes, the synthetic rope was launched at Conexpo 2014, the result of a joint development between Samson and Manitowoc which had worked exclusively on the cable for the first year. It is 80 percent lighter than wire rope and features torque-neutral technology, eliminating load spin and does not require lubrication.



Samson's synthetic rope is 80 percent lighter than regular wire rope

NEW JEKKO SPK60

www.jekko.it

JEKKO MINICRANE

2017 AMSTERDAM 7-8 MAY

SMOPYC

Stand 770 Jekko Minicrane

Stand 17 Transgruas

Companies reporting on a calendar year have now mostly filed their year-end results, in general they do not make comfortable reading.

Steady as she goes at Skyjack

Skyjack has reported sales for the full year of \$866.4 million, almost two percent higher than in 2015 thanks to higher sales of scissor lifts in Europe, North America and Asia, along with a strong pickup in US telehandler sales partially offset by lower boom sales in North America and Europe. Operating profits were seven percent lower at \$145.2 million.



Profit slump at Haulotte

Haulotte has confirmed full year revenues up three percent to €457.8 million, while net profit after tax dropped 16 percent to €23.3 million. The fall is due to competitive pressures in Europe, where the company saw most of its growth last year, and exchange rate issues particularly with the UK. The product mix also helped contribute to lower margins.



Full year losses for Manitex

Manitex - which also owns PM, Oil & Steel and Valla Cranes - has reported a 10 percent fall in full year revenues to \$288.96, with a pre-tax loss of \$16.57 million compared to a loss of \$6.97 million in 2015. Sales in the lifting business were down 11 percent to \$173.0 million due to lower sales of Manitex boom trucks to the energy market and lower sales of PM loader cranes. Additionally the division sold fewer large capacity cranes, resulting in lower margins and an operating loss of \$1.07 million compared to a profit of \$72,000 last year. The ASV division saw revenues decline 11 percent due to a 50 percent reduction in sales to CAT, but managed to maintain profitability due to increased higher margin sales to distributors.



Ashtead continues to fly high

Ashtead, owner of Sunbelt Rentals in the USA and A-Plant in the UK, reported a 25 percent hike in revenues for the nine months to the end of December. Total revenues were £2.69 billion with strong growth in both the US and UK. Pre-tax profits for the period were more than 25 percent higher at £584 million.

Sunbelt revenues in dollars were up nine percent to \$2.69 billion, with an operating profit of \$840 million, also nine percent up on the year. In the UK A-Plant revenues increased almost 15 percent to £301.7 million, with an operating profit of £50.4 million - more than seven percent higher than last year.



A-Plant takes Kier Hoist

Ashtead also announced that its A-Plant business acquired the Kier hoist business along with a five year supply contract. The asset purchase deal includes all relevant equipment and ongoing business of the Kier hoist division, which will be incorporated into GB Access, A-Plant's specialist personnel and materials hoist sales and rental operation.



Wacker Neuson slips back

German telehandler and compact equipment manufacture Wacker Neuson has reported its full year results. Revenues slipped one percent to €1.36 billion, while pre-tax profits dropped 16.5 percent to €81.4 million. Revenues in Europe and the Far East/Asia were up on the year, while sales in North America declined. The company is however optimistic for the year ahead.



Tough first year for Herc

Herc Rentals - previously Hertz Equipment - has reported its full year revenues of \$1.55 billion - down 7.5 percent on 2015. Last year's pre-tax profit of \$156.9 million however was converted to a loss this year of \$4.9 million due to costs associated with the company's separation from the Hertz car business, lower revenues and substantially higher interest costs. 2015 profits were also inflated by a \$50.9 million gain from the sale of the French and Spanish business.



Tough year for H&E

US sales and rental company H&E Equipment saw revenues fall almost six percent to \$978.1 million in 2016, due mainly to lower new and used equipment sales which fell 17 and 18 percent respectively. Rental revenues edged up half a percent. Pre-tax profits dropped 22 percent to \$59 million. Rental rates fell 0.6 percent over the year, while physical utilisation declined 1.2 percent to 69.7 percent with a slightly larger fleet.



Positive year for Alimak

Mastclimber and hoist manufacturer Alimak posted full year revenues one percent higher at just over SK2 billion (\$228 million) with stronger a performance from construction and rental markets offset by lower industrial revenues due to a slow-down in oil & gas activity. Pre-tax profits were 42 percent higher at SK281.4 million (\$31.3 million), while order intake during the year improved 1.5 percent to SK2.14 billion (\$238 million.)



Further declines at Terex Cranes

Terex Cranes has posted its full year results with revenues down 19 percent to \$1.27 billion, while last years' operating profit of \$56.3 million was converted to a loss this year of \$321.7 million due to substantial restructuring costs. The order book/backlog at the end of December was \$323 million, down from \$407 million at the end of 2015.



Challenging year end for Genie

Genie achieved full year revenues of \$1.98 billion in 2016, 12 percent lower than in 2015, due to lower rental company replacement business in North America, along with flat sales in Europe. Operating profits for the period slumped around 34 percent to \$177.4 million. The backlog/order book at the end of December was \$506 million down from \$570 million at the end of 2015.



For the full reports on all these stories check out Vertikal.net

The new CTE Zed 15.2 on an Isuzu 4x4 pick-up truck



15m pick-up from CTE

CTE has launched a new pick-up mounted platform - the 14.7 metre Zed 15.2 for mounting on either the Isuzu D-Max 4x4 or the Toyota Hylux 4x4 chassis.

The new platform has 6.3 metres of outreach and a platform capacity of 230kg with the 1.4 metre by 700mm basket having 120 degrees of platform rotation. The unit has 360 degrees of continuous slew with a 2.75 metre square outrigger footprint. Gross Vehicle Weight is three tonnes.

Heli to merge access operations

Belgian sales and rental company Heli is to merge its Heli Equipment division with the High & Safe suspended platform and scaffold business that it acquired in October.



New Irish crane company

c&a

news

Bosslift's new 50 tonne Liebherr LTC1050



A new crane hire company - Bosslift - has been opened in Ireland with its headquarters in Cootehill, County Cavan.

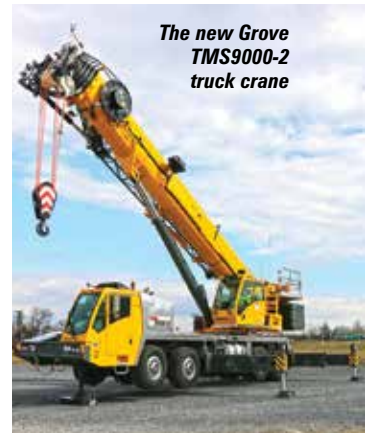
Founded by crane industry veteran Cathal McNally, the new company will also be opening locations in Dublin and Belfast and has kicked off its fleet with a 50 tonne Liebherr LTC1050 City-type All Terrain crane and a five axle 250 tonne Grove GMK 5250L.

New Grove truck crane

Grove unveiled a new four axle 100 tonne US truck crane at Conexpo the TMS9000-2 which replaces the TMS9000E.

The crane features a new, 51.6 metre six section Megaform Twin Lock boom with manual offset or luffing bi-fold swingaway options and additional inserts. It is 363kg lighter than the 9000E in spite of its longer boom, and has been optimised to comply easily with various US road regulations. Load charts are five percent better than its predecessor. According to chief executive Barry Pennypacker the new crane was designed from scratch in just six months.

The new Grove TMS9000-2 truck crane



versalift.co.uk

24/7 CUSTOMER SUPPORT
SERVICE, MAINTENANCE & REPAIR

Vertical
days
Stand Number 207

niftylift

01908 223456
www.niftylift.com



- ✓ High Performance
- ✓ Low Impact



Class leading performance from every model in the range from 9m to 28m.

With award-winning **Hybrid** technology and SiOPS[®] secondary guarding, our machines are *the* safe and efficient choice.

For more information on the Nifty range, or to arrange a free on-site demonstration, please call **01908 223456**, or visit our website.

Call
01908 223456
to book your free
demonstration

- UK-based **Cadman Cranes** has appointed **Dave Dye** as sales director.
- Germany's **I&H** has taken a 220t **Tadano ATF 220G-5 All Terrain** crane.
- Scotland's **Easy Reach Access** has ordered two **Teupen** spider lifts, a **Leo31T** and **Leo35T**.
- Germany's **Megalift** has taken three **Liebherr LTM 1250-5.1** cranes and ordered an **LTM 11200-9.1**.
- UK-based **John Sutch Cranes** has taken a **CR-200Ri** city-type All Terrain crane.
- Jacco Hartkoorn** has joined the **Holland Lift** international sales team.
- Whirlpool UK** was fined £700,000 after a fatal platform incident.
- Italian rental company **MinoEge** has taken three **Socage** platforms.
- Van den Brink Hoogwerker en Kraanverhuur** has taken the first **Genie SX-135XC** in the Netherlands.
- Croatia's **Zagrebtrans** and Poland's **Crane Rental** have ordered large **Demag** cranes.
- UK's **GT Access** is equipping 180 machines with **Trackunit** technology.
- UK-based **Lifterz** has recruited **Malcolm Oliver-White** and **Stuart Harling**.
- Scottish rental company **Whyte** has taken two **Liebherr LTM 1130-5.1 All Terrain** cranes.
- Northern Ireland's **Clerkin Elevation** has taken a 42m **Ommelift 4200 RBDJ**.
- French rental company **High Rent** has taken delivery of a **Genie SX-180** boom lift.
- France's **Mediaco** has ordered 25 **Demag All Terrain** cranes.
- Germany's **Beyer-Mietservice** has taken delivery of 40 **Manitou MT 625H** telehandlers.
- Riwal Denmark** has taken delivery of a 33 metre **TCA Falcon FS330Z** spider lift.
- Empire Crane** of the US has ordered two **Tadano Mantis** telescopic crawler cranes.
- Hiab** has appointed **Nikolaus Scheurer** as vice president, marketing and communications.
- Middle East **Sarens Nass** has ordered 15 **Demag AC-130-5 All Terrain** cranes.
- Sennebogen** has appointed Estonia's **ScanBalt Crane** as Baltic states dealer.
- UK-based **Mann Crane Hire** has ordered a 50t **Tadano ATF 50G-3 All Terrain** crane.
- US-based **Groves Equipment Rental** has ordered a 51t **Grove GRT655L Rough Terrain** crane.
- Bronson Crane** has ordered the first **Potain Hup 40-30** self-erecting tower crane in the USA.
- India's **Sanghvi Movers** has ordered 18 **Grove GMK6300L All Terrain** cranes.
- Germany's **Hamburger Hafen und Logistik** has ordered 11 **Kalmar** diesel-electric straddle carriers.
- US-based **R.H. Marlin Crane Rental** has taken a 250t **Grove GMK 5250L All Terrain** crane.
- Crane 29** in Bristol docks, UK has been converted to a one bedroom hotel room.
- Access industry veteran **Erwin Müller** has died age 65.
- US **Bragg Crane Service** has ordered two 400t **Liebherr LTM 1400-7.1 All Terrain** cranes.
- UK's **Bob Francis Crane Hire** has ordered a 220t **Tadano ATF 220-G5 All Terrain** crane.
- India's **Sanghvi Movers** has ordered seven 650 tonne **Demag CC 3800-1** crawler cranes.



Dave Dye



Jacco Hartkoorn



Malcolm Oliver-White



Stuart Harling



Nikolaus Scheurer



Erwin Müller

Scotland's **LoadFast Systems** has added **Dylan Clifford** and **Ryan Ferguson** to its team.



Dylan Clifford



Ryan Ferguson

US-based **Crane and Rigging** has ordered eight **Liebherr All Terrain** cranes.

UK/Irish **Cork Crane Hire** has taken a **Spierings SK1265-AT6** mobile tower crane.

US-based **Bigge Crane & Rigging** has ordered a **Potain MDT 219** flat top tower crane.

Ireland's **Doyle Shipping Group** has taken a **Liebherr LRS 545** reachstacker.

Barge Terminal Tilburg has taken five **Kalmar Gloria** reachstackers.

Dave Bendle, **Skyjack** service manager Europe, Africa and the Middle East is to retire.



Dave Bendle

Liebherr will supply a 3,000t **HLC 295000** marine crane to Belgium's **Deme**.

Poland's **Corleonis** has taken a 250t **Demag AC 250-5 All Terrain** crane.

India's **Mtandt** has ordered 158 new platforms, telehandlers and cranes for its fleet.

Cristof Seidenather, managing director of **Lebus Germany** is handing over the company to a third generation.

Germany's **HHLA Frucht-und Kühl-Zentrum** has taken a **Gottwald G HMK 4406** mobile harbour crane.

Dubai Parks and Resorts has taken the first **Genie Z-60/37DC** booms in the Middle East.

UK-based **City Lifting** has taken delivery of its second **Raptor 184** articulating luffing tower crane.

UK's **Global Energy Group** has taken a 35t **Kato CR-350Ri** City-type All Terrain crane.

Austria's **Prangl** has promoted **Gerhard Eisenkölbl** to Geschäftsführer of the company.



Gerhard Eisenkölbl

Germany's **MSG Krandienst** has taken a 160t **Demag AC 160-5**.

Italy's **Messina Group** has taken nine **Kalmar Gloria DRG450** reachstackers.

Scotland's **Truck Plant Services** has taken a new tri-axle trailer from **Andover Trailers**.

Singapore's **Tat Hong** has announced the resignation of **Tse Po Shing**.

Scotland's **EnerMech** has appointed **Chris Dixon** as director of UK Mechanical Handling Services.



Chris Dixon

Belgium-based **Sarens** has ordered 18 **Demag All Terrain** cranes.

Australian rental company **Hire Guys Balcatta** has taken a **Niftylift 4x4 Hybrid** boom lift.

Belgium's **Duma Rent** has taken delivery of five **Unic** spider cranes.

Germany's **Sönke Jordt** has taken a 250t **Liebherr LTM 1250-5.1 All Terrain** crane.

Northern Ireland-based **CP Hire** has taken 10 new 45t **JLG 450AJ** articulated boom lifts.

Poland's **Beckmann Volmer Technology** has appointed **Flamanda** as dealer for Lithuania & Latvia.



Daniel Miller

Texas-based **ReachMaster** has become a certified **IPAF** training centre.

Daniel Miller, chief executive of **Manitou Americas** will leave the company in late April.

UK-based **Alfa Access Services** has promoted **Graham Davis** to technical operations director.



Graham Davis

MEC has appointed **Michael Liberto** as regional sales manager southern and western states in the US.

UK-based **Southern Cranes & Access** has taken three **Terex All Terrain** cranes.

Germany's **Schmidbauer** has taken a **Spierings SK 597-AT4** self-erecting tower crane.

CTE UK has delivered a 26m **Zed26JH** to property maintenance company **DPR**.

JLG has made **SkyGuard** secondary guarding standard on all boom lifts.

Hiab has won an order for 100 loader cranes from a Chinese wind turbine manufacturer.

The UK's **Access Alliance** has appointed **Trackunit** as its access control and telematics supplier.

UK-based **J. Hewitt Crane Hire** has taken delivery of a 250t **Grove GMK5250L All Terrain** crane.

Trojan battery has appointed **Phillip Taylor** as chief human resources officer.



Phillip Taylor

Terex Cranes has upgraded its 500 tonne **Demag AC 500-8 All Terrain** crane.

German steel erector **A. Preun** has taken delivery of a 50t **Tadano ATF 50-3**.

Socage has appointed **Access Platform Sales (APS)** as its dealer in the UK.

Australia's **United Forklift and Access Solutions** has placed a \$26 million order with **Haulotte**.

Poland's **Tauron** has taken delivery of two 16 metre **Beckmann BVT LTS-16** truck mounted platforms.

Almac has delivered nine 20ft **Bibi 870-BL/Evo** scissor lifts in southern France.

Germany's **J+B Küppers** has taken delivery of a 100t **Demag AC 100-4L All Terrain** crane.

Ramirent has published its full year results with a strong fourth quarter pick-up.



Rene Porto

Manitowoc has appointed **Rene Porto** as sales director for its Brazilian operation.

Linden Comansa has launched a new **LCL700** luffing jib tower crane.

Italian spider crane manufacturer **Jekko** has appointed **Eurogruas** as distributor for Mexico.



Rick DeCarlo

US-based **Sims Crane** has appointed **Richard 'Rick' DeCarlo** as senior manager business affairs.

Brand Energy & Infrastructure Services has taken delivery of 30 **JLG** aerial work platforms.

Italy's **Scaligera Service** has taken a 21 metre **CTE Zed 21.2 JHV** truck mounted platform.

Denmark's **Steiness Liftcenter** has taken the first **Genie SX-135 XC** in Europe.

UK rental company **Cannon Access** has taken **Haulotte HA16 RTJ** and **HA20 RTJ** boom lifts.

Poland's **KGK Kozenice** has taken delivery of a 16m **BVT TTS-16** tractor mounted platform.

Italian rental company **Vernazza Autogru** has taken delivery of two **Grove All Terrain** cranes.

Hi Rent has taken delivery of the first 86ft **Niftylift HR28 Hybrid** in France.

US-based manufacturer **Custom Equipment** has appointed **Dan Schneider** as director of sales.



Guru Bandekar

JLG has appointed **Guru Bandekar** vice president of engineering.

See www.vertikal.net news archive for full versions of all these stories