



The 16 tonne launch version of the MCT 325 was erected at the plant with full 75 metres of jib

## New Potain flat top

Potain unveiled the MCT 325 flat top tower crane at its production facility in Zhangjiagang, China last month. The MCT 325 is available in two basic versions with 12 and 16 tonne maximum capacities and jib lengths from 40 to 75 metres. As with other MCT cranes the 325 has been designed for easy transport and assembly, and more efficient operation. The company says that on a well prepared site, the MCT 325 can be erected within a day and a half.

The MCT 325 will eventually replace the traditional MC 310 hammerhead tower crane. Shipments are due to begin in September and the model will initially be sold across the Asia Pacific region, the Middle East, Africa, South/Central America and Russia.

## Mateco expands in Panama

International rental group Mateco has acquired Panama's Pan Rental from owners Meifus Holding and Latam Rental in an all-share purchase. Pan Rental has revenues of around \$5 million and a fleet of 300 units, mostly aerial work platforms and telehandlers. It employs 20 between its Panama City base and a satellite operation in Chiriqui, close to the Costa Rica border. Mateco runs a global fleet of 30,000 machines with more than 2,800 employees at 100 locations across 15 countries in Europe, Mexico, Panama and Chile.



(L-R) Pascal Vanhalst of TVH, Laurent Planche of Mateco Panama, Isaac Alvarez of Meifus, Javier Rodriguez and Juan Carlos Peláez of Latam.

## First GTC-600s arrive in Europe

UK sales and rental company Delden Cranes has taken delivery of four 60 tonne Tadano GTC-600 telescopic crawler cranes, the first to be delivered in Europe. The GTC-600 features a 36 metre main boom and a 17.7 metre bi-fold swingaway extension, giving it a maximum tip height of 55.5 metres. All four machines went straight out on contracts across the UK.



Two of the new Tadano GTC-600s

## Windhoist acquired

Private equity firm Star Capital Partnership has acquired Irish crane and wind turbine installation group Windhoist from owner and chief executive Hugh McNally for an undisclosed sum. As part of the deal McNally stepped down as chief executive and left the company, he is replaced by Tim Adams a consultant who has been working with the company during the acquisition/due diligence process. He has a background in construction/contracting, the marine construction business and renewable energy.

The company was established by Dan McNally in Ireland in 1958, entering the heavy cranes and lifting sector in 1996. In 1999 it carried out its first wind turbine installation job, using a 400 tonne crane to erect 600kW turbines for Vestas. The company rebranded this part of the business as Windhoist and today the group operates as two principal businesses - McNally's Crane Hire in Monaghan and Dublin in Ireland and Windhoist based in Scotland. Group revenues are said to be in the region of €90 million. The last accounts filed for the UK business show revenues of £47.4 million, with a pre-tax profit of £496,000.

Scottish crane rental company Forsyth of Denny, which Windhoist acquired in late 2016, was separated from the group last year and will continue to be owned by the McNallys.



## AFI acquires Facelift and restructures

UK based access sales and rental group AFI has completed the acquisition of aerial lift rental company Facelift. AFI says that it plans to retain and develop the well-known Facelift brand, with managing director Paul Standing remaining with the business and joining the AFI board.

Facelift's latest accounts show revenues of just over £12 million last year, some way below its peak. The company was established by founder and current shareholder Gordon Leicester in 1985.

AFI has also secured £60 million of new long term debt type financing from Pricoa, while the senior management team has bought out its majority investor, private equity firm Rutland Partners, which acquired a 51 percent stake in the AFI business in 2013 at the same time as AFI acquired Hi-Reach and Access Rental Gulf.

As a result of this transaction the ownership of the business reverts to the management team - led by David McNicholas and chairman David Shipman - who are taking a "significant majority stake" in the business. The addition of Facelift to the group takes revenues to more than £100 million with a rental fleet of 7,500 machines.



# Sarens 5,000 tonner delivered

Sarens new 5,000 tonne SGC-250 heavy lift crane has been delivered to the Hinkley Point C Nuclear Power Plant site in Somerset, UK and is being prepared for its first lifts. The job of moving the massive crane from its testing site in Belgium was carried out by heavy haulage specialist Collett & Sons.

Unveiled last year, the SGC-250 is one of the world's largest land-based cranes and will play a key role in the power plant's construction - the UK's largest, most complex civil engineering project. The crane will be used to lift the heaviest of 600 major fabrications, including the five largest components that make up each unit's steel containment liner and dome.

The SGC-250 at Hinkley Point C



# First Euro Grove GRT655s

The first European-built 55 tonne Grove GRT655L and GRT655 Rough Terrain cranes have shipped from the manufacturing facility in Niella Tanaro, Italy. The only difference between the two models is the length of the full power boom - a four-section 34.8 metre on the GRT655 and five section 43 metre on the GRT655L.

The units are the latest in the company's move to produce more of its Rough Terrain cranes in Europe and follows the introduction of the 80 tonne GRT880 and 100 tonne GRT8100 Rough Terrains last year.



The GRT production team at Niella Tanaro

# TVH acquires IPS

Belgian international spare parts and access rental group TVH has acquired IPS, the UK based replacement parts business along with its Outrigger Pads division.

The business was previously part of IAPS which also includes the aerial lift distributor APS which is not included in the deal. Telford based IPS had revenues last year of around £10 million and is the UK's largest independent aerial lift parts supplier. IAPS co-owner Kevin Shadbolt will remain with the IPS business which will, we understand, continue as standalone operation.



# Australia's first wind turbines installed by tower crane

ALE has begun installing the first wind turbine generators to be erected in Australia with a tower crane. The company is using two 135 tonne capacity Kroll K1650L luffing jib cranes on the 59 turbine Lincoln Gap Wind Farm site near Port Augusta, South Australia.

They will install 14 of the turbines with commissioning due to begin later this year. The K1650L was chosen for its high wind speed tolerance of 15 metres a second for lifts over 60 tonnes and its small footprint which reduces the hardstanding required by more than 50 percent compared to other cranes of this size. Maximum lift height of the K1650L is 179.5 metres. ALE previously used these cranes in Thailand to install turbines with a hub height of 162 metres, the highest in South East Asia.

*A tower crane is being used for the first time in Australia to install wind turbines.*



# Maxim acquires Solley

US rental company Maxim Crane Works has acquired Alabama-based Solley Equipment & Rigging from owner and chief executive Ronnie Solley. Founded in 1972 it operates from three locations in Decatur and Huntsville, Alabama and Nashville, Tennessee. The fleet includes All Terrains, RTs and boom trucks topped by a 400 tonne Liebherr LTM 1400-7.1.



# Steve Filipov moves to Manitex

US based crane and aerial lift manufacturing group Manitex International has appointed Steve Filipov as chief executive. The current chief executive David Langevin becomes the full time executive chairman, with a focus on strategic planning, corporate finance and relationships with key strategic and investment partners.



Steve Filipov

Filipov has spent his entire career in the crane business, joining Terex in 1993 and announcing his departure when Tadano's acquisition of the Demag was completed in August.

# Tadano completes Demag deal

Tadano completed the acquisition of Demag Mobile Cranes on 1st August - a month later than planned - paying \$215 million as originally agreed. The transaction brings together two of the top four mobile crane manufacturers, creating a business close in size to market leader Liebherr, in terms of mobile crane revenues.

Demag and affiliates are now a subsidiary of Tadano, with the corporate name Tadano Demag GmbH. Jens Ennen, who joined Tadano from Manitowoc earlier this year becomes chief executive of the new subsidiary.



Jens Ennen

# First 55t XCMG tele crawler in Europe

Chinese crane manufacturer XCMG has delivered the first 55 tonne XCG55TE telescopic crawler crane in Europe. The new crane was sold by XCMG's Bulgarian dealer Ingconsult, for work on the TurkStream pipeline project, a natural gas pipeline running from the Russian Federation to Turkey. The 55 tonner is the first XCMG telescopic crawler to be fully CE compliant and includes a five section 41 metre main boom, plus a 9.5 to 16 metres bi-fold swingaway extension with 15 and 30 degree offsets. It is rated at 3.5 metres and can handle 3.5 tonnes at 20 metres radius or 500kg at 42 metres. The crane can also travel with its maximum capacity.

The XCG55TE is one of a six model XCMG telescopic crawler crane line that ranges from 25 to 220 tonnes. The company now plans to obtain CE certification for the 60, 100 and 130 tonne All Terrain cranes along with its 85, 130 and 260 tonne lattice crawlers.



The crane is the first XCMG telescopic crawler to be fully CE certified

# 100th Liebherr LTM 1450-8.1

French crane rental company Bezombes Niort has taken delivery of the 100th 450 tonne Liebherr LTM 1450-8.1 All Terrain crane to be delivered since shipments began less than three years ago. The eight axle crane was unveiled at Bauma 2016 and can travel complete with its 85 metre main boom, along with outriggers and main winch within 12 tonne axle loads. It is largest crane in Bezombe's fleet and will be used in a variety of applications from wind power work to lifting large boats in and out of the water at the Atlantic ports close to its base in Niort, western France.

Managing director Benoît Bezombes said: "We had to replace our LTM 1250-6.1 after 13 years of good, reliable service because our customers are demanding more reach and capacity. The 85 metre boom enables us to erect tower cranes in record time, while the luffing jib delivers extraordinary performance for its size. The VarioBase and VarioBallast systems allow us to be extremely flexible on sites with limited space. The LTM 1250-6.1 was a very good crane, but the new 450 tonner is an enormous improvement on it."



(L-R) Guy Bellec and Francis Ebert of Liebherr, Benoît Bezombes of Bezombes Niort, Christoph Kleiner and Georg Reinhold of Liebherr

# ALE acquisition to proceed

Mammoet and ALE are moving ahead with the deal which will see the Dutch heavy lift company acquire UK based heavy lift and transport specialist ALE. The deal still depends on the approval of the relevant competition authorities and may take a while. Until then the two companies will continue to trade independently as competitors.

Mark Harries, group managing director of ALE said: "Both companies have a strong track record and are renowned for their craftsmanship, innovations and fleet of equipment. We both have shaped the profession of heavy lifting and transport through numerous innovations in the past decades. The prospect of the two companies joining forces is very exciting."



ALE AL.SK cranes have capacities up to 8,000t

# New features for GMG

US based aerial lift sales company GMG has made a number of additions to its I-Power 2.0 operating system for its slab electric scissor lifts.

The new features include: 'Ramp Control', which automatically puts the machine into a controlled low speed mode when travelling downhill - it remains in low speed until the machine is level again and the operator has turned it off. 'Elevated Creep Mode' allows operators to reduce the drive and steering speeds even further from 0.5 to 0.1 mile an hour, in order to provide a more precise movement when working close to fragile objects, such as glass or ducting. Finally, the manufacturer has perfected its 'Variable Steering Speed' feature which changes the steer speed in relation to the travel speed.

The company said: "When driving down a steep ramp, slab machines can experience speeds up to two to three times the normal high speed seen on flat ground. The excessive speed can place the operator in an uncomfortable and unsafe situation. This also places a lot of stress on the drive system when the machine tries to stop at these excessive speeds."



# €9.8 million expansion for Special

Special Equipment - the Netherlands based wholesale rental division of Mateco - is to spend €9.8 million on new equipment. The new order includes more than 70 large machines - including boom lifts from 135 to 185ft, high capacity telehandlers, scissor lifts above 66ft and spider cranes - all for delivery between now and the fourth quarter of next year. Special's fleet is already approaching 250 units, all of them larger or specialist/niche machines.



The fleet includes heavy duty scissor lifts over 66ft

The company is also adding sales, service and logistical resources to keep pace with demand and a larger fleet. The company's primary objective was to support Mateco companies across 15 European countries, along with outlets in Malaysia, Mexico, Panama and Chili. However, an increasing percentage of its business now comes from independent rental companies.

## Ruthmann adds platform option for new models

Ruthmann has introduced a 1.6 metre, 300kg capacity platform option for its new 3.5 tonne TB/TBR truck mounted platforms. The standard basket is 1.4 metres wide, with 250kg platform capacity.



The optional platform for Ruthmann's TB/TBR range.

## First MK 88 in NZ

New Zealand's Hi Lift Cranes took delivery of the first Liebherr mobile self erecting tower crane in the country, an MK 88 Plus. The new crane was handed over at a customer event in Auckland.

Maximum capacity is eight tonnes at 12 metres radius and a 30 metre hook height, while it can handle 2.2 tonnes at its maximum radius of 45 metres, or 1.85 tonnes at a 32 metre radius and 59 metre hook height. Hi Lift Cranes was established in 1982 making it one of the oldest crane rental companies in New Zealand.



The handover (L-R) Bill Houliker of Liebherr, Tom Curran of Hi Lift, Thomas Schröder and Aleksandra Meissner of Liebherr and Barrie Mabbott of Hi Lift

# VERSALIFT

## Shaping the future of van-mounted platforms

- The largest vehicle-mounted platform provider
- Over 7000 vehicle-mounted platforms in the UK and Ireland
- National network of Versalift trained engineers providing 24/7 support
- Over £1M of OEM parts in stock and ready for next day dispatch



T: 01536 721010  
E: sales@versalift.co.uk  
www.versalift.co.uk

Meet

# DINO 280RXT

Higher. Lighter. Smarter.

**100% up to the job**

- Improved operator experience
- Superior boom performance
- Lightweight, excellent rough terrain access

## DINOlift

UP TO THE JOB

www.dinolift.com

**BRONTO  
SKYLIFT**  
Safety above all



Safety | Uptime | Reliability  
That's what Brontos are known for.

Focus on your job at heights and let a  
Bronto take care of the rest.



Take a look at the renewed  
brontoskylift.com!

## Mediaco acquires Altéad Lifting



France's leading crane and aerial

lift rental group Mediaco has acquired the crane division of lifting and heavy transport group Altéad, which has been in administration since the end of May. Altéad runs the third largest fleet in France with 190 cranes, 530 employees and 15 locations.

Mediaco made a joint offer with transport company Capelle which will take the rest of Altéad. The deal takes Mediaco's fleet to 800 cranes operating from 75 branches, with 2,000 employees and revenues of €340 million.

## Onsite Rental acquires Prime Rentals

Australia's Onsite Rental Group has acquired Queensland's Prime Rentals which offers a range of equipment including telehandlers, booms and scissor lifts from 10 locations. Onsite is in expansion mode and operates a fleet of 70,000 units, including aerial work platforms, telehandlers and general construction equipment. It employs more than 450 across 30 branches.

## MBO for 2 Cousins

Two directors of UK rental company 2 Cousins Powered Access have completed a Management Buy Out of the business with the support of PMD Business Finance.

Jason Prisley, who took over as managing director in 2016, continues to lead the Oxford based business, alongside fellow director Claudio Checchia, while founder/owner David Exley leaves the company to focus on other business interests. No financial details have been disclosed.



(L-R) Jason Prisley, Nathan Curbishley of PMD and Claudio Checchia

## 3M Stop Use & Recall Notice



3M Fall Protection has issued an immediate stop use and product recall for its DBI-SALA Nano-Lok edge and Wrap Back twin leg self retracting lifelines. The company says that in the event of a fall the energy absorber may not properly deploy which could expose the user to serious injury or death, although there have been no reports of accidents or injuries associated with the issue.



# Bobcat 'Waste Expert' telehandlers

Bobcat has launched the 'Waste Expert' range of telehandlers for the refuse and recycling markets starting with four models - the 6.4 metre/3,400kg TL34.65HF, two seven metre models - the 3,500kg TL35.70 and 3,800kg TL38.70HF - plus the 7.5 metre/4,300kg TL43.80HF. All are powered by Stage IV diesels, hooked up to variable transmissions with automatic parking brake and an ECO mode, which adjusts the High Flow hydraulic system to produce the best balance between performance and fuel consumption.

The new machines feature an extra-large boom nose, standard boom cushioning and equipment for working in harsh conditions, with extra protection for hydraulic cylinders, windscreen, roof, lights and the fuel and oil tanks.



Bobcat TL43.80HF

# Verton takes R-Series to UK

Australian technical lifting and load rotation specialist Verton has launched the R-Series 20 tonne remote controlled spreader beam in the UK.

Rather than using tag lines, the unit uses gyroscopic modules to rotate and control a suspended load via a remote controller. UK contractor Sir Robert McAlpine is trialling the new product. Earlier this summer Mammoet and van Oord teamed up with Verton to develop the R-Series for wind turbine blade installation.



Verton R-Series

# First Platform Basket Spider 43Ts in Europe

Italian aerial lift manufacturer has delivered its first two 43 metre Platform Basket Spider 43T spider lifts in Europe - one to French rental company ATM Levage and the other to Italian rental company MP Magione Piattaforme.

The Spider 43T provides an outreach of 17.3 metres with an unrestricted platform capacity of 136kg, while 13.2 metres outreach is possible with the maximum capacity of 330kg. MP Magione's unit has been supplied in hybrid version with lithium ion batteries.



ATM Levage takes delivery of its new Spider 43T.



MP Magione Piattaforme's new Spider 43T.



**SMART DRIVE ACCESS.**

GROWTH HACK YOUR BUSINESS WITH BRAVI'S INTELLIGENT APPROACH TO OPERATIONAL WORK SPACES.

SAFELY ACCESS. MULTIPLE POSITIONS. OPTIMISE TASK RATES & OPERATIONS.

**BRAVI**  
PLATFORMS

WWW.BRAVI-PLATFORMS.COM

UK rental group **HSS** has posted first half revenues of £161.4 million, up 3.9 percent on last year in a 'like for like' comparison with a pre-tax loss of £7.4 million compared to a loss of £10.2 million last year. The actual revenues last year - with **UK Platforms** included - were £169.8 million with a pre-tax loss of £7.1 million, reflecting UK Platforms' positive contribution. Its sale generated £47.5 million with a net profit of £12.8 million, pushing this year's bottom line into the black, with a profit of £7.55 million.



**Tadano** has posted first quarter revenues of ¥40.4 billion (\$377.7 million), but pre-tax profits fell more than 38 percent to ¥1.4 billion (\$12.7 million) due to higher production costs, product and market mix and higher SG&A costs. Mobile crane sales were 23.6 percent higher at ¥23.4 billion (\$218.9 million). Loader crane sales were up 28.7 percent to ¥5.6 billion (\$52.2 million) while aerial work platform sales declined 7.7 percent to ¥4 billion (\$37.4 million). Sales of parts, services and used equipment etc improved 1.4 percent to ¥7.4 billion (\$69.2 million).



**JLG** achieved nine month revenues of \$3.06 billion - up 13 percent thanks to a 42 percent jump in telehandler sales. Operating profit for the period improved more than 45 percent to \$376.1 million, but the backlog/order book at the end of June was 30 percent lower on the year at \$854.8 million.



**United Rentals** posted record first half revenues, almost 22 percent higher at \$4.4 billion, thanks to acquisitions and organic growth. However pre-tax profits declined more than three percent to \$571 million, due mostly to the early redemption of debt.



**Genie's** first half revenues increased marginally to \$1.6 billion, held back by the weak Euro translating into fewer dollars and slower overall growth. The backlog at the end of June remained at last year's levels of \$746 million, while operating profits slipped 20 percent to \$145.9 million, thanks to the exchange rate issues along with a weaker product mix.



**Palfinger** has reported record first half revenues more than 11 percent higher at €893.4 million, due to higher loader crane sales. Pre-tax profits were more than 20 percent higher at €74.9 million. Sales at the 'Land' division - which includes cranes and aerial lifts - increased 15.5 percent to €733.6 million, with an operating profit five percent higher at €82.6 million. The 'Sea' division saw sales drop 17 percent to €95.3 million, while the operating loss was cut from €9.9 million last year to €7.9 million this year.



**H&E Equipment Services** has reported first half revenues of \$647.2 million, up 13.5 percent on the same period last year. Pre-tax profits came in 23 percent higher at \$50.2 million.



**Hiab** saw first half revenues increase 18 percent to €674 million, while operating profits were seven percent higher at €80.7 million. Order intake was 12 percent higher at €681 million leaving an order book of €453 million - exactly the same as this time last year.



**Manitowoc** has reported first half revenues almost five percent higher at \$922.7 million, driven by higher sales in the Americas offsetting lower sales in the Middle East. Pre-tax profits jumped 10 fold to \$26.5 million in spite of a \$25 million charge for the early retirement of debt.



**Snorkel** achieved first half revenues of \$112.4 million, up almost 17 percent, while last year's pre-tax loss of \$704,000 was reduced to \$525,000.



First half revenues at **Cramo** were flat at €301.5 million, with last year's acquisition of Germany's KBS Infra helping offset declines in Scandinavia. Pre-tax profits declined 34.5 percent to €18.9 million.



**Wacker Neuson** has reported first half sales of €950.7 million, up 15 percent on last year, while pre-tax profits were 38 percent lower at €79.8 million although last year's numbers included a one off gain of €54.8 million on a real estate sale. On a like for like basis pre-tax profits increased 8.5 percent.



**Alimak** has reported first half revenues of SK2.36 billion, (€220.2 million) an increase of 14 percent. Pre-tax profits jumped 50 percent to SK274.9 million (€25.6 million).



**Herc** (formerly Hertz Equipment) has reported first half revenues of \$950.8 million, up 3.7 percent, while pre-tax profits were \$5.2 million, compared to a loss of \$14.7 million last year.

**Ashtead** has posted first quarter revenues of £1.28 billion, up 17 percent on last year. Pre-tax profits were eight percent higher at £304.7 million. **Sunbelt** revenues were 18.5 percent higher at \$1.38 billion, and operating profits 15.5 percent higher at \$446.6 million. Revenues at **Sunbelt Canada** were 26 percent higher at \$94.8 million, with operating profits up 12.5 percent to \$16 million. In the UK **A-Plant** revenues were five percent higher at £131.4 million, due entirely to higher sales of used equipment. Operating profits fell 31 percent to \$15.4 million.



**Ramirent** - now part of Loxam - posted first half revenues of €333.6 million, down 3.1 percent on last year. Pre-tax profits plummeted more than 33 percent to €28.1 million.



**JCB** has reported record revenues for 2018 of £4.1 billion, up 22 percent on 2017, while EBITDA increased 31 percent to £447 million.



For the full reports on all these stories check out [Vertikal.net](http://Vertikal.net)

# Tadano's 100th birthday

Tadano has celebrated the 100th anniversary of its foundation on August 29th, 1919, when Masuo Tadano left Takamatsu for Asahikawa, Hokkaido, to start a welding business - Tadano Iron Works Co - that has evolved into one



of the world's leading mobile crane manufacturers. The company built its first crane - the two tonne OC-2 truck crane - in 1955, followed by the all-hydraulic OC 5 two years later. In 1960 it exported its first crane to Indonesia and in 1966 launched the TL truck crane line mounted on specially designed carriers. Its first Rough Terrain crane - the 15 tonne TR150 - was produced in 1970.

Tadano opened its first overseas subsidiary - Tadano International (Europe) - in 1973 in the Netherlands - and 10 years later launched its first aerial work platforms. In 1990 it acquired German manufacturer Faun unveiling its first All Terrain cranes the AR range, two years later. In 2008 it acquired American telescopic crawler crane manufacturer SpanDeck/Mantis - now Tadano Mantis - and last year it took a 14.9 percent stake in US boom truck manufacturer Manitex. Earlier this year it made its largest acquisition to date purchasing Demag mobile cranes from Terex. (See page 65)



Tadano's first crane the OC-2

## Bravi Sprint TL in production

Italian low level platform specialist Bravi has started shipping the Sprint TL - a tyre handling version of its 11ft Sprint self-propelled lift - shown as a prototype at Bauma.

With a working height of 5.35 metres it is designed to take the effort out of placing and retrieving tyres and wheels from storage racks in a warehouse, workshop or retail environment. The lift rack/table tilts forward when the lift is stowed and can be loaded with up to four tyres and a combined weight of 100kg. The platform has an overall width of 808mm and can travel at speeds of up to 5kph with sufficient battery power to travel 18 kilometres on a single charge.



The lift rack moves to horizontal so that tyres can be rolled off or onto shelving



The lift rack tilts forward for loading



Great results  
are achieved  
only with  
commitment

Working harder  
to give you more

With more than a century of history, Multitel Pagliero has become a strong reference point for the whole access industry. Aluminium components are the result of a continuous research and technological development since more than 30 years. Technical innovation, perfect market fit, and outstanding performances make the Multitel product the solution for your safety at work.

[www.multitelgroup.com](http://www.multitelgroup.com)





**"NOW I CAN WORK WITHIN  
CITY LIMITS AGAIN."**



#### **REGAIN ACCESS TO CITY JOBS WITH A ZONE-COMPLIANT FLEET.**

Whether you're a contractor or rental company owner, each piece of compliant equipment is an investment in a successful future. Your vehicles must meet standards for today's job site, tomorrow's regulations and for better value at resale. That's why it's important to work with a provider that understands these new requirements and their impact on your business. JLG offers the widest range of environmentally friendly, compliant products to keep you at your most productive, whether you're working on a crowded job site, new construction, indoors, on slab or off.

Learn more at [www.jlg.com](http://www.jlg.com)



- **Custom Equipment** has appointed **Derek Koontz** as mid-Atlantic territory manager.
- Sweden's **Swelift** has taken two 57m **Ruthmann T 570 HF** truck mounts.
- New Zealand's **Tower Cranes NZ** has gone into administration.
- **Microcranes** has added a wireless remote for its M1 crane.
- **Trackunit** has appointed **Franck Cohen** as chairman.
- **Finn Schlitterlau** of Denmark's **Falcon Lift** has left to manage a Polish company.
- **Palfinger** has appointed **Hemmo Luijjerink** a head of crawler crane sales.
- Morocco's **Marsa Maroc** has taken the first **Genie SX-180** boom lift in north Africa.
- French trainer **Afrtal** has taken 42, **Haulotte HA12 IP** boom lifts.
- Czech company **Radek Malina** has taken a **Demag AC 100-4L**.
- Spain's **Elebia** has launched an automatic rail clamp.
- Australia's **Townsville Marine Logistics** has taken a **Konecranes Gottwald G HMK 6507** mobile harbour crane.
- **Wolffkran** has appointed **Duncan Salt** as chief executive.
- **Franco Fassi**, founder of the loader crane company that bears his name, has died.
- Germany's **Wendel Arbeitsbühnen** has taken an electric **Böcker AK 46/6000** truck crane.
- Germany's **Roggermaier** has taken a 90m **Ruthmann T900 HF** truck mount.
- **Snorkel** has appointed **Latteps** as distributor for Latvia.
- **Cargotec** has appointed **Päivi Koivisto** as VP sustainability.
- **DP World** has ordered 15 **Kalmar** cranes for **Nhava Sheva International Container Terminal** in India.
- UK based **MAS** has ordered 75 platforms worth £2.5 million and opened a depot in Rotherham.
- Canada's **Coopers Equipment Rental** has opened a branch in Barrie.
- UK's **Bandshire Crane Hire** has taken a **Klaas K950 RSX** truck crane.
- Germany's **Schuch** has taken a 45t **Demag AC 45 City**.
- **Liebherr** has commissioned a TCC 78000 gantry crane in Rostock.
- **Manitex International** has appointed **Steve Filipov** as chief executive.
- Italy's **Barni Romano** has taken a 25m **Palazzani TZX 250/C** spider lift.
- India's **Steel Carriers Infrastructure** has taken a 1,200t **Demag AC 1000-9**.
- The **Port of Esbjerg**, Denmark has taken a **Liebherr LHM 800** mobile harbour crane.
- A new rental company - **Skylift Platforms** - has opened in the UK.
- Switzerland's **Matthey Petit** has taken a 45t **Demag AC 45 City**.
- US-based **Duffy Crane and Hauling** has taken a 220t **Demag AC 220-5**.
- US-based **Shawmut Equipment** has opened a facility in Elmsdale, Nova Scotia.
- **Bravi** has launched the **Sprint TL**, tyre handling lift.
- Germany's **Gushurst** has taken 50 **Magni** telehandlers and aerial lifts.
- **Hiab** has merged its German dealer network with **Effer**.
- **Ahern International** has opened a facility in Tigre, Argentina.
- UK's **Anglia Access Platforms** purchased **Genie** boom and scissors.
- **Cramo's** VP HR development **Petra Schedin Stergel** has left the company.



**Derek Koontz**



**Franck Cohen**



**Duncan Salt**



**Päivi Koivisto**



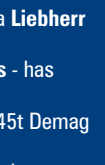
**Steve Filipov**



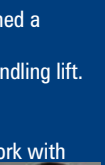
**Phil Leahy**



**Markus Knuchel**



**Richard Carr**



**Markus Altenhoevel**

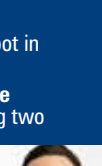


**Petra Schedin Stergel**

- **Terex Utilities** has updated its Load Alert system for hi-Ranger aerial devices.
- UK rental group **AFI** has appointed **Nick Higgins** as COO.
- Germany's **Engel-Krane** has taken a **Spierings SK597-AT4**.
- Scotland's **Stoddard Crane Hire** has taken a 60t **Grove GMK3060L**.
- **Nationwide Platforms** has opened a depot in Didcot, Oxfordshire.
- New York City's **DoB** barred **United Crane and Rigging** from its jurisdiction following two incidents.
- **Unic Europe** has appointed **Podniose** as a dealer in Poland.
- **Point of Rental** has appointed **Ben Sinclair** as customer success manager Asia/Pacific.
- Germany's **Udert Mietgeräte** has taken a **Haulotte HA20 LE Pro** boom lift.
- US crane dealer **Runnion Equipment** has moved to new facilities.
- **Hiab** has extended the warranty on **Loglift** and **Jonsered** cranes.
- **Genie** has appointed **Bahrah Trading Company** as distributor for Kuwait.
- **Ruthmann** has appointed **Markus Knuchel** as workshop manager in Switzerland and **Richard Carr** to its North American sales team.
- Italian manufacturer **Safi** has appointed **SkyAccess** as its Swiss dealer.
- **Ramirent** CEO **Tapio Kolunsarka** is leaving the company.
- Loader crane manufacturer **Hyva** has extended the warranty on its **Edge** cranes.
- Australia's **Kenrads Hire** has moved to larger premises in Port Hedland.
- Germany's **Riga Mainz** has added a **Liebherr MK 88 Plus** mobile self-erecting tower crane.
- Germany's **Besl** has added **Ruthmann** truck mounts including a 51m T510 HF.
- UK rental company **GT Access** has acquired **Extreme Hire**.
- **A-Plant** has appointed **Phil Leahy** as MD South.
- UK's **Abba Plant Hire** has taken a 50t **Liebherr LTC 1050-3.1 City AT**.
- Switzerland's **HMT** has moved to new facilities and taken 10 **Haulotte** platforms.
- Germany's **Henneberger Schwerlast** has taken a 250t **Liebherr LTM 1250-5.1 AT**.
- Germany's **Braun Transporte** has taken a **Genie SX-105 XC** boom lift.
- **ATLAS** has published new guidance for Working at Height in wind.
- Germany's **Dieter Vogel** has taken a 90t **Liebherr LTM 1090-4.2**.
- UK contractor **Entire Services** has taken a 13m **Imer IMR 13T** spider lift.
- **Point of Rental** has updated its **Rental Expert** and **Elite** software.
- **XCMG** has appointed **Harald Riedinger** and **Chengyu Zhang** to head its European Research and Development Centre.
- Australia's **Kenrads Hire** has opened two new branches in Victoria.
- **CMC** has appointed **Tracked Spider Sales** as dealer for UK and Ireland.
- **Craig Millis** and **Hefin Evans** have joined **Verton** in Europe.



**Nick Higgins**



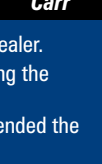
**Ben Sinclair**



**Markus Knuchel**



**Richard Carr**



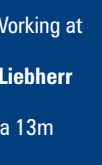
**Phil Leahy**



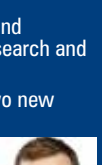
**Markus Knuchel**



**Richard Carr**



**Markus Knuchel**



**Markus Altenhoevel**

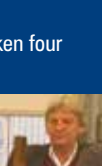


**Petra Schedin Stergel**

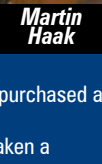
- **A-Plant** chief executive **Richard Thomas** has left the company.
- Germany's **Spielhoff** has taken a 22m **Ruthmann TB 220**.
- **Palazzani** has appointed **Nolves** as an Italian dealer.
- UK-based **NMT** has taken a 300t **Demag AC 300-6 AT**.
- Bahraini contractor **MMETC** has taken four **Demag** cranes.
- Italy's **Faraone** has confirmed **Comet UK** as its distributor.
- Colombia's **Invertrac** has taken two **Grove ATs**.
- **Holland Lift** founder **Martin Haak** has died.
- Germany's **Helmut Kirsch** has taken a 21.5m **GSR B220PXE**.
- Indonesia's **Cikarang Dry Port** has purchased a **Kalmar Eco** reachstacker.
- Germany's **Gräser-Eschbach** has taken a **Liebherr LTM 1450-8.1**.
- **Haulotte** has appointed new dealers - **Sterling Access** in South Africa, **Promatex OI** in Réunion and **Pie Tnufa** in Israel.
- US-based **Sims Crane** has appointed **Jared Lester** as business development manager.
- Germany's **Bleser Mietservice** has taken a 12m **Hematec/Helix 1205** mast boom.
- **Ahern International** has moved to new facilities in Osaka, Japan.
- US **R&J Lifting Solutions** has taken a **Terex CBR 40H** self-erecting tower crane.
- New York crane man **James 'Jimmy' Lomma** has died - he was 73.
- **Riwal** has opened new branches in France, the Netherlands and Croatia.
- UK's **Wilson Access** has opened a depot in Birmingham.
- **Ron Eickhoff** of **Rouse Asset Services** has died - he was 61.
- **Custom Equipment** has appointed **Nik Fleischfresser** as national account manager.
- **Christophe Burel** is joining **ATN**.
- Egypt's **New El Alamein City** has taken 35 **Potain** tower cranes.
- **Trimble Lifting Solutions** has appointed **Empire Crane Company** as a distributor.
- **Paul Hunwick** of **RKP Access Platforms** has died - he was 56.
- UK-based **Lifting Gear Hire** has rebranded as **LGH**.
- France's **Adekma** has taken a 300t **Demag AC 300-6 AT**.
- UK's **Davies Crane Hire** has taken a 60t **Liebherr LTM 1060-3.1 AT**.
- **Falcon Lifts** is offering guaranteed residuals on its spider lifts.
- **Snorkel** has appointed **Konstantin Kuvaldin** as territory manager, Eastern Europe.
- Germany's **Ley-Krane** has taken a 19.9m **Oil&Steel Scorpion 2013** truck mount.
- **Mateco** has acquired Panamanian rental company **Pan Rental**.
- Germany's **Induma Rent** has appointed **Markus Altenhoevel** as international rentals manager and taken its first **Haulotte HA20 LEs**.
- **Versalift UK** is working with the **University of Northampton** on stability loadings.



**Richard Thomas**



**Martin Haak**



**James Lomma**



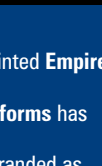
**Ron Eickhoff**



**Konstantin Kuvaldin**



**Markus Altenhoevel**



**Petra Schedin Stergel**



**Markus Altenhoevel**



**Markus Altenhoevel**



**Petra Schedin Stergel**

See [www.vertikal.net](http://www.vertikal.net) news archive for full versions of all these stories