

cranes & access

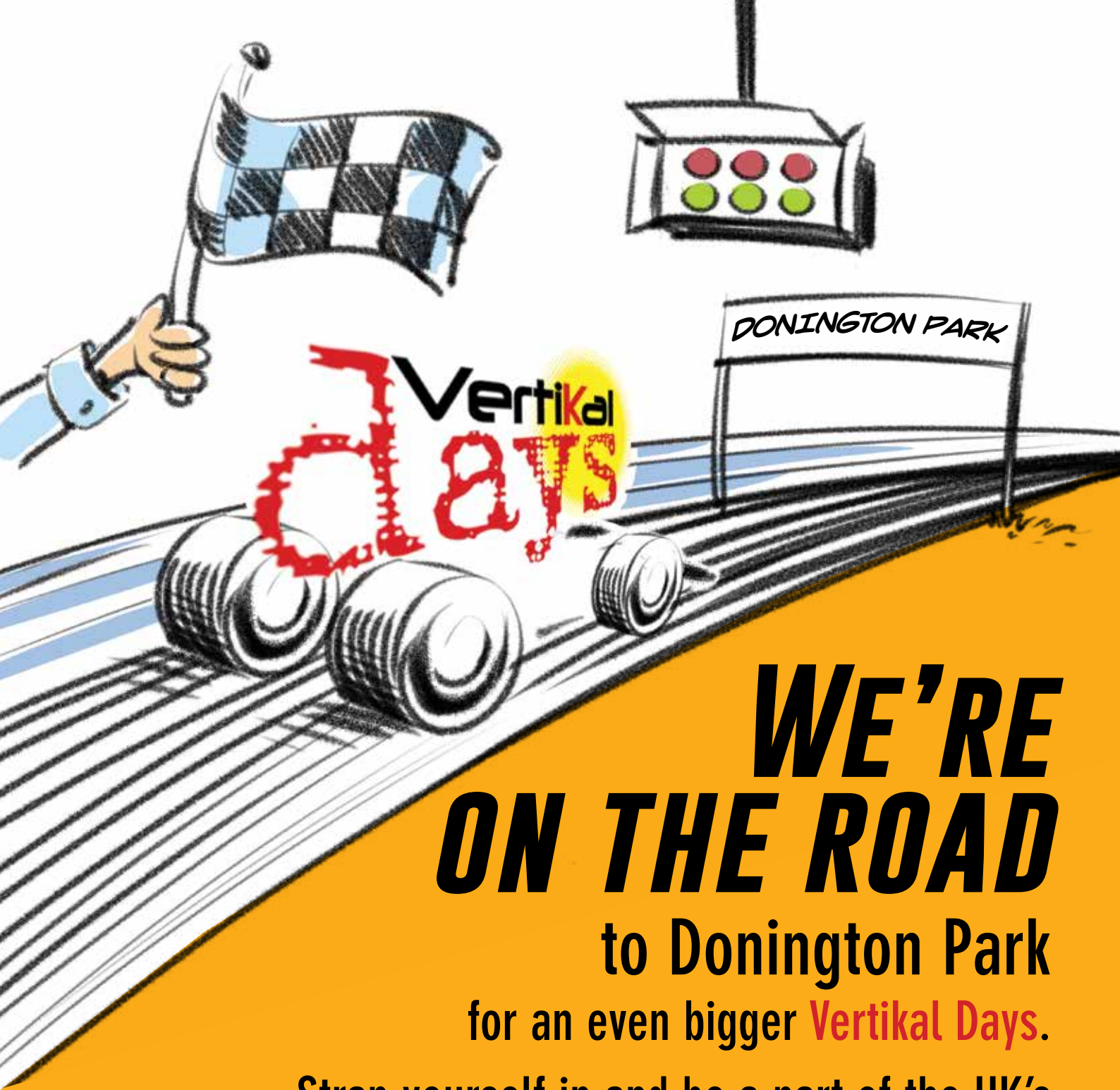
October 2018 Vol.20 issue 7

All Terrain
cranes

Small truck
mounted
platforms

Outrigger
mats and
trackway

www.vertikal.net



WE'RE ON THE ROAD

to Donington Park

for an even bigger **Vertikal Days**.

Strap yourself in and be a part of the UK's
largest lifting equipment event.



Reserve the dates now
May 15th-16th 2019

**Vertikal
days**

DONINGTON PARK

Registration is now open for both exhibitors and visitors. Go to www.vertikaldays.net



On the cover:

Tadano says that the capacities of its new 60 tonne ATF60G-3 - which features a single engine mounted at the rear of the superstructure - are up to 46 percent stronger and 62 percent stronger on the extension than other 60 tonne/three axle cranes.



C&A contents

17

All Terrain cranes



29 3.5 tonne truck mounted platforms



39 Outrigger mats and trackway



SUBSCRIPTIONS: Cranes & Access is published nine times a year and is available on payment of an annual subscription of £40.00. If you wish to subscribe, please send a crossed cheque made payable to The Vertical Press Ltd to: Subscriptions, The Vertical Press, PO Box 6998, Brackley, Northants NN13 5WY. Address changes should also be sent to this address. Please include the address label from a recent issue with all correspondence and allow 3 months for changes to be effective.

SUBSCRIBE ONLINE AT:

www.vertical.net/en/journal_subscription.php

BULK DISCOUNTS: These are available to companies wishing to take out multiple subscriptions. Please contact the subscriptions manager for more details.

Tel: +44 (0)8448 155900 Fax: +44 (0)1295 768223
E-mail: info@vertical.net

Kran & Bühne: The Vertical Press also publishes a German magazine which deals with the same issues as Cranes & Access, but is written for German users and buyers. Details available on request.

While every effort is made to ensure the accuracy of information published in Cranes & Access, the Editor and Publisher can accept no responsibility for inaccuracies or omissions. Views expressed in articles are those of the authors and do not necessarily reflect those of the Editor or Publisher. Material published in Cranes & Access is protected under international copyright law and may not be reproduced without prior permission from the publishers.

Comment 5
News 6

New AT and RT from Link-Belt, All-new Terex luffing jib tower crane, LGMG opens European operation, All electric & hybrid Manitou telehandlers, Mammoet upgrades PTC 200DS for 2,000 tonne lift, First Almac boom lift, Comet 31m on a 3.5 tonne chassis, New Hiab loader cranes, JLG external fall arrest system, New Klubb electric platform, Arcomet to distribute Terex Cranes in Germany, Sinoboom opens European hub, Tadano's largest loader crane, Maeda updates the MC285C, Spierings expands UK service, Versalift launches hybrid VTL van mount and financial coverage.



Strong activity in the All Terrain sector 17

This year has already seen some interesting activity across the small to mid capacity All Terrain crane market with new models from many of the major manufacturers. We look at some of the new introductions and developments and how the new 60 and 300 tonners compare against existing models.



Truck mounts go hybrid 29

The move towards electric is now spreading rapidly to the truck mounted platform market and over the past few months numerous manufacturers have introduced hybrid versions. We review the latest hybrids, catch up on the other developments across the sector and interview Richard Martin, director of Skyking, the UK distributor for Palfinger Platforms, Ascendant and Isoli truck mounted platforms.



In the next C&A

The next issue of Cranes & Access scheduled for mid to late November will feature Access equipment for arborists, Heavy lift/alternative lifting, Spider and atrium lifts and technology/remote controls. If you have any contributions or suggestions or are interested in advertising in this issue, please contact our editorial or sales teams.

Finally sinking in? 39



It is now 14 years since we first published a feature highlighting the importance of using mats to spread loads imposed by outriggers. In the intervening years their use has increased significantly, resulting an apparent reduction in outrigger set-up incidents. We ask if the message is finally getting through and take a look at the latest outrigger mat size calculators.

Platformers' Days 2018 45



This year Platformers' Days celebrated its 19th anniversary with the largest event so far in terms of the volume of equipment on display and the range of lifting related products. We look at a few highlights from the popular German access equipment show.

Mobile Mini investment pays dividends 49

UK cabin rental company Mobile Mini has been providing portable accommodation/cabins and storage solutions in the UK for 40 years. Mark Darwin visited its new Thames Valley depot near Aylesbury and spoke to lift operations manager Nick Sesevic about the latest investment and developments.



regulars

Training 55
IPAF Focus 57
ALLMI Focus 59
PASMA Focus 61
CPA 63
NASC/CISRS 65
Books and Models 67
Letters 69
What's on 71
Online directory 76

cranes & access

Subscribe today - the only way to guarantee your copy www.vertical.net/en/subscriptions



IPAF PAL Card welcomed on **Build UK sites**

If you use one of these,



you need one of these.



IPAF Approved Training Centres train more than 150,000 operators every year in the safe and effective use of powered access platforms.

The IPAF PAL Card is recognised worldwide across industries as proof that your operators have been trained to the highest safety standards and meet all legal requirements.

Find an IPAF approved training centre at www.ipaf.org

The IPAF operator training programme is certified by TÜV as conforming to ISO 18878.



Editorial team

Mark Darwin - Editor
editor@vertikal.net

Associate editors

Rüdiger Kopf (Freiburg)
Alexander Ochs (Freiburg)
Leigh Sparrow

Reporter

Sam Pickering

Sales & customer support

Pam Penny
Clare Engelke
Karlheinz Kopp

Production/Administration

Nicole Engesser

Subscriptions

Lee Sparrow

Publisher

Leigh Sparrow

Advertising sales

UK-based

Pam Penny pp@vertikal.net
Tel: +44 (0)7917 155657
Clare Engelke ce@vertikal.net
Tel: +44 (0)7989 970862

Germany-based

Karlheinz Kopp khk@vertikal.net
Tel: +49 (0)761 89786615

Italy

Fabio Potestà,
Mediapoint,
Corte Lambruschini,
Corso Buenos Aires 8, V Piano-Interno 7,
I-16129 Genova, Italy
Tel: 010 570 4948 Fax: 010 553 0088
email: mediapointsrl.it

The Vertikal Press

PO box 6998 Brackley NN13 5WY, UK
Tel: +44(0)8448 155900
Fax: +44(0)1295 768223
email: info@vertikal.net
web: www.vertikal.net

Vertikal Verlag

Sundgaullee 15, D-79114,
Freiburg, Germany
Tel: 0761 8978660 Fax: 0761 8866814
email: info@vertikal.net
web: www.vertikal.net



Prototypes and concepts

We all like to see and hear about new developments - advances in technology, equipment that performs better and improvements in efficiency etc - which is why trade exhibitions are so popular.

Manufacturer's often target these shows for their major product launches, even building product development schedules around them. Given the fixed dates of such events new models are often not quite finalised or ready when they have to ship out to the show.

The importance of a big show launch is such that development is often suspended while the key prototype is displayed, as manufacturers seek reactions prior to fixing the final design while

hoping to land a few orders and generate end user interest.

The term 'prototype' indicates that a machine is not yet production ready. In some cases it may even lack major internal components such as a transmission. Others may be 99 percent complete but have management systems disabled. This is particularly true today when a machines software is so critical and is often subject to fine tuning right up to the point the first units roll off the production line.

The risks of exhibiting prototypes were highlighted at Platformers' Days, in Germany last month, when the boom of a CTE truck mounted platform buckled while two people were in the basket. Fortunately, the platform came to rest against another lift and both men were wearing harnesses and lanyards which helped them escape with minor injuries.

The subsequent statement from CTE said that the incident was caused by, and I quote, 'an incorrect and non-agreed use of the prototype CTE MP 32.19 by a non CTE authorised operator and not imputable defects in the design or production of the platform'.

Ignoring the content of this statement for now... here we have a machine that the manufacturer and exhibitor knew was a prototype, that should not have been operated at this busy public event, yet somehow someone was able to do so.

The episode raises many questions.

This is not the first such incident, at SAIE 2012 in Italy a prototype 32 metre CMC spider lift was operated by one of its dealers and overturned. Thankfully he and his customer landed on the roof of an adjacent exhibition hall and were not badly injured.

One solution would be to ban prototypes from exhibitions, but this would be wrong. I am all for seeing manufacturers' latest design concepts and prototypes and discussing their merits with others. It is a critical element of a good trade show. However it should be obvious that operating functions should be disabled while the show is open.

Do we really need to operate any machine at a busy show - even if it is production ready? Surely a full demonstration on proper work in the correct environment is the better way?

Exhibitors and show organisers take note and sort it!

Mark Darwin

Comment and feedback is most welcome via post, email, fax or phone stating if we may publish them or not: editor@vertikal.net

Vertikal Press

MEMBERS OF:



ISSN: 1467-0852

© Copyright The Vertikal Press Limited 2018



Vertikal
.net