

New 5,000 tonner

Earlier this month around 400 invited guests attended the launch of Sarens' latest heavy lift crane - the SGC-250 - at its site near Ghent, Belgium. The company claims that this third generation SGC is the largest land-based crane in the world, capable of lifting 5,000 tonnes at a 40 metre radius and 2,000 tonnes at 100 metres on its main boom.



The SGC-250 can lift 5,000t at 40m

As soon as the testing is completed the crane will be dismantled and transported to the UK for a four year contract at the Hinckley Point nuclear power station project in Somerset.

The SGC-250 has a 250,000 tonne/metre load moment with a 160 metre main boom which can be topped with jibs of up to 99.5 metres for a 250 metre maximum hook height. Unlike previous models the SGC can also travel along a track while fully rigged allowing it to relocate between lifts. A full report is on page 22.

The cranes 3,200 tonne hook block.



JLG offers smaller platform...

JLG is to offer an optional smaller - 762 x 914mm - platform on all of its internal combustion powered boom lifts. Targeted at specific applications involving work among congested overhead structures, such as the construction or repair of bridges, where a smaller basket is easier to navigate between the steel and concrete support structures.



The new, smaller JLG platform

The manufacturer also expects the new option to be popular in petrochemical plants, refineries, cogeneration facilities and convention centres.

...and introduces SkyLine secondary guarding

JLG has unveiled a new secondary guarding system/control panel protection system for boom lifts, the SkyGuard SkyLine, which will become standard in Europe, Africa and Middle East region from this month.

SkyGuard SkyLine features a small diameter plastic coated wire rope bolted to the left side the platform controls, with a magnetic connection on the other side. If the operator should contact the cable with all but the lightest of force, the magnet detaches from its socket, causing all boom lift functions to stop, while reversing those functions that were activated just before the system was triggered. The system can be reset by reinserting the magnet connection. It replaces the solid bar on the original SkyGuard system, launched in 2012. The bar can still be requested for those users who prefer it.



JLG's SkyGuard SkyLine system.



The Skyworks team with the milestone JLG boom lift

250,000th JLG boom

US rental company Skyworks has taken delivery of the 250,000th JLG boom lift to come off the production line, a 66ft 660SJ. Skyworks also purchased the 100,000th JLG boom lift in 2015.

Deutz wins injunction against supplier

Engine producer Deutz has won an injunction against a long term component supplier which was threatening its supplies. The Saarbrücken Regional Court in Germany ruled that Neue Halberg Guss must resume supplying castings to Deutz with immediate effect as per its contract. The decision, issued in the form of a mandatory injunction will ensure the supply of crankcases and cylinder heads, at least until the end of the year, when the current injunction expires.

The casting supplier apparently threatened to suspend deliveries unless Deutz agreed a significant price increase, one-off payments amounting to millions of Euros and firm purchase commitments, even though a valid contract was in force between the two companies and there was no legal basis for making mid contract changes.

Klubb K20 urban truck

French vehicle mounted lift manufacturer Klubb has launched a new all-electric version of its K20 platform on a Goupil G4 urban chassis, using a lithium ion Phosphate battery pack. The chassis has two simple A-frame stabilisers and provides a working height of 10 metres, an outreach of four metres and a platform capacity of 120kg. Overall width is 1.5 metres and top speed 43 miles an hour.

Developed in partnership with body builder Concepts and Communities, it is aimed at cleaning and maintenance work in pedestrian precincts or residential areas, given that it emits no emissions and is virtually silent in operation.



Klubb K20 on a Goupil G4 chassis

New Comansa luffers...

Spanish tower crane manufacturer Comansa has upgraded its 21LC660 and 21LC750 flat top tower cranes and is to launch two new luffing jib cranes at Bauma China this week.

The brand new CML280 and CML310 are aimed at the growing demand for 18 and 24 tonne capacity luffing jib tower cranes, particularly in Asia and the Middle East. The cranes will also be available in Africa and South America. Details on the new cranes are limited as we go to press, however the CML310 has a maximum capacity of 24 tonnes and a maximum radius of 60 metres. The CML280 shares many of the same elements, including jib and counter jib but has a maximum capacity of 18 tonnes.



Comansa is launching two luffing jib tower cranes at Bauma China including this CML310

...and upgraded flat tops

The 21LC660 and 21LC750 flat top tower cranes - currently available with capacities of 24, 36 and 48 tonnes - have been upgraded to provide 25, 37.5 and 50 tonne capacities respectively by adopting the technology introduced with the recently launched 21LC1050, including a smaller diameter compacted wire rope and lighter trolley/hook set, which improves the capacities at all radii, including the maximum load at the jib tip.

The new flat tops also feature the new modular counter jibs, allowing for a reduced tail swing. For example, when the 21LC750 crane is erected with a 50 metre jib, the tail swing radius is 25 metres instead of 31 metres. An optional 90 metre jib will also be available for special applications. Both cranes also feature the latest Cube cab with fully glazed front as standard.



Comansa 21LC660

Nationwide UK Platforms inquiry

The UK Competition and Markets Authority (CMA) has issued a formal notice confirming that it has launched an inquiry into the planned acquisition of UK Platforms by Loxam/Nationwide Platforms, having confirmed that it falls within the requirements of section 96(2) of the Enterprise Act.

The notice period gives the CMA until 7th January 2019 to complete its inquiry and decide on whether to refer the acquisition to a full stage two investigation. The key factors that will influence the decision are whether the acquisition 'may be expected to result in a substantial lessening of competition within the market in the United Kingdom'.



Almac opens Australian subsidiary

Italian tracked scissor and boom lift manufacturer Almac is to open a direct sales operation in Australia - Almac Pacific Pty Ltd - and has agreed a retail distribution deal with United Forklift and Access Solutions.

Almac Pacific will initially be limited to a registered office, supported from the factory in Italy, with responsibility for sales and support to major accounts, larger rental fleets and all national rental companies. Almac previously worked with Melbourne-based specialist aerial lift sales company ASPAC which has sold the Almac machines under its Athena brand, since launching the product at the EWPA convention in 2015. Since then Australia has become Almac's largest single market. While that partnership has now ended, Almac will continue to use the Athena branding for its products in Australia and New Zealand.

Almac has also appointed major rental company United Forklift and Access Solutions, as its exclusive 'National Retailer' for sales to local rental companies and end users.

Almac general manager Andrea Artoni said: "The appreciation and reception of our products from day one has made Australia our first market. The prospects for the future brought us to the decision to establish a direct presence on the market. Consequently, it was very important to identify a high quality partner to service and support the retail market. United has always been very receptive to our products and produce the same level of quality work."



Andrea Artoni of Almac (L) and David Maxwell of United Forklift and Access Solutions



An Athena branded Almac scissor lift

New Manitou/ Gehl telehandlers

Manitou has unveiled two new telehandlers at its annual North American dealer meeting in Milwaukee, Wisconsin.

The models include the two tonne/4.2 metre, 1.52 metre wide and 1.9 metre high Gehl RS4-14, the company's smallest telehandler to date. The new model, aimed at small projects and homeowners, will be launched and details released at the end of the year.

The company also showed the six metre/2,300kg MLT 630AG, aimed at the agricultural market, with a forward reach of 3.32 metres it will be available for shipment towards year end.



A visitor inspects the Gehl RS4-14 compact telehandler

National Crane tractor model

National Crane has launched a tractor mounted version of its 27.2 tonne NBT30H-2 - the NBT30H-2 TM - which features a 21 metre main boom, giving a maximum tip height of 23.7 metres.

The crane is targeted at oil field applications, but also viable for everyday crane service with its trailer removed, it is road legal in all 50 states, without special permitting.



Spotters for scissor lifts?

A state coroner in South Australia has recommended that scissor lifts should not be operated unless there is a person on the ground acting as a safety spotter. The recommendation was made by coroner Mark Johns as he revealed his findings following the inquest for Jorge Castillo-Riffo, 54, who was crushed between a scissor lift guardrail and the floor above at the Royal Adelaide Hospital construction site in 2014. A passing colleague found him by chance, but he and another man struggled to find the emergency lowering valve as they frantically tried to relieve the pressure on him. He died later from serious brain injuries sustained during the incident.

Johns made the suggestion following his earlier recommendation that the Council of Australian Government's investigate the standardisation of scissor lift controls - in particular the emergency lower controls which he found were difficult to access on the machine in question. He then stated that until such standardisation is in place, scissor lifts should not be operated without a spotter on the ground to activate the emergency lowering mechanism.

New lithium ion batteries from Trojan

US-based battery manufacturer Trojan has launched the new Trillium range of 'intelligent' lithium ion batteries for deep cycle applications. Available in three sizes, the range has a life expectancy of more than 5,000 cycles and employs the industry standard 26650 size Lithium Iron Phosphate (LFP) cells in the highest capacity cell configuration, which provide improved cycle life and energy density, while making them easy to install on a retrofit basis replacing lead acid batteries.

They are IP67 rated for protection against dust and water, while 'intelligent' electronic controls provide integral battery protection and voltage compatibility for all 12, 24, 36 and 48 volt applications, and can be used with most lead acid battery chargers. Other features include CAN-bus communication, built in diagnostics and an integrated state of charge indicator.



The Hybeko Tunnel GS-3390 includes a chassis mounted cable drum stand

Hybeko Tunnel scissor

Norwegian Genie distributor Hybeko has launched the 33ft Hybeko Tunnel 3390 RT scissor lift based on the Genie GS-3390 RT Rough Terrain scissor lift. The factory approved conversion features a two mode operation - Tunnel or Standard - selected with the turn of a key with working heights of either eight or 11.94 metres respectively. In Tunnel mode the lift can drive at full height on slopes of up to eight degrees, while the maximum travel speed when stowed is 8kph. Maximum platform capacity is 1,134kg as per the standard model.

Hybeko decided to retain the diesel power rather than convert to battery power due to long recharging times and the fact that recharging is not permitted in tunnels in Norway. The engine is equipped with a high performance catalyst and diesel particulate filter to keep emissions as low as possible. The Tunnel GS-3390 features the 7.39 metre long dual extension Super Deck, a chassis mounted cable drum stand that extends to avoid interference with the extended deck, towing support and air/water services to the platform.



The Hybeko Tunnel 3390RT can drive on inclines of up to eight degrees at working heights of up to eight metres

IMTs largest loader crane

US-based loader and service crane manufacturer and HMF distributor Iowa Mold Tooling (IMT) has launched the new 42684 loader crane with a load moment of 42 tonne/metres, with a maximum capacity of 4.7 tonnes, a maximum tip height of 28.8 metres and radius of 25.2 metres. Features include remote control, IMTs Progressive Crane Control (PCC) helping smooth crane movements and improve operator efficiency, and Priority Flow Control which optimises crane movements during the simultaneous operation of multiple functions.

The Electronic Vehicle Stability (EVS) system monitors and inputs chassis tilt angles, chassis flex and outrigger pressures into the fully integrated Rated Capacity Limiter (RCL) to maximise lifting capacities. The company is aiming the new model at the sheet wallboard market.



The new IMT 42684

Two new CMC spiders

Italian aerial lift manufacturer CMC has launched two new spider lifts - the 21.6 metre S22HD and the 23 metre S23.

The S22HD has a maximum platform capacity of 230kg with an outreach of 9.9 metres, with 12.5 metres outreach with a platform capacity of 80kg. The S23 features a dual rise and telescopic boom with an outreach of 12.4 metres, with its maximum platform capacity of 200kg.

Both spider lifts are available with hybrid power packs and feature CMC's anti-collision system and wireless remote controls.



CMC S23

The new CMC XS22 HD

Apex returns to Maastricht

The Apex exhibition will return to MECC exhibition and convention centre Maastricht, the Netherlands on June 9 -11th 2020, following two outings in Amsterdam.

The next show will be the 10th Apex with the first held in Maastricht in 1996.

A revamp of the facility means it will include more outside space and will once again run alongside the International Rental Exhibition. A return to the Amsterdam RAI in 2020 was not possible on dates that would have been suitable or acceptable for the industry.



C&A news

ML Holdings acquires in Maryland

ML Holdings Crane Group of Albuquerque, New Mexico, has acquired Crane Rental Company of Capitol Heights, Maryland - on the outskirts of Washington, DC - from owner Michael Scott.

The move adds to the group's existing coverage in the Maryland and greater Washington DC region and takes the number of crane rental companies in the group to eight - Crane Service Inc, Marks Crane & Rigging, United Crane & Rigging, ML Cranes, Winslow Crane Service, Majestic rigging and transportation, Chellino Crane and now Crane Rental Company - with coverage in Texas, New Mexico, Colorado, Chicago/Illinois, North Carolina, Virginia and Delaware.

Crane Rental Company was established in 1937 and runs a fleet of cranes that ranges from a 15 tonne carry deck model to the 350 tonne Liebherr LTM 1350-6.1.



ML Holdings now has eight crane rental operations



NEW SOLAR

The most innovative, agile truck-mounted access platform.

Ideal for works in tunnels, plane defrosting, installation of solar panels and much more.

- Self-levelling system in every working position, for the basket to always remain perfectly aligned to the ground.
- Self-propelled version available (with optional steering system controlled from the basket).



- Max working height: 11 m (also available 15 m)
- Lateral outreach: 4 m constant
- Basket capacity: 400 Kg
- Basket size: 3.5 m x 2.0 m
- Basket with double lateral movement 90+90° rotation
- 4 stabilizers in shape (H+H)
- Operational on slopes up to 8°



www.officinecomet.com

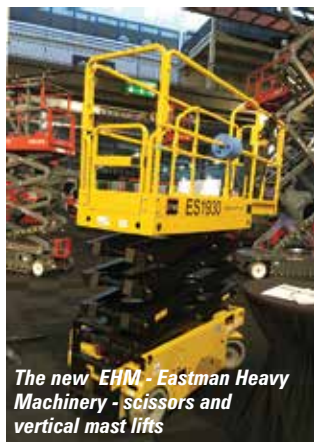
New product launches at Verticaaldagen

The Dutch equivalent of Vertical Days was held earlier this month in Gorinchem, the Netherlands. The event shared the large exhibition hall with paint show SGA Vakdagen, with visitors free to move between both events.

The organisers said that 1,600 visitors attended the second of the three day show to see 40 exhibitors, representing the majority of aerial lift manufacturers. The exhibits included a surprising number of new product launches including crawler booms from Custers and the Dutch Crane Factory and the launch of the new scissor and vertical mast lifts from China's EHM - Eastman Heavy Machinery by Fontexx Cranes and Access which has an exclusive distribution deal for Europe excluding France and Turkey. Full report page 50.



New entrant 'Dutch Crane Factory' showed its new range of tracked booms with working heights of up to 14 metres



The new EHM - Eastman Heavy Machinery - scissors and vertical mast lifts



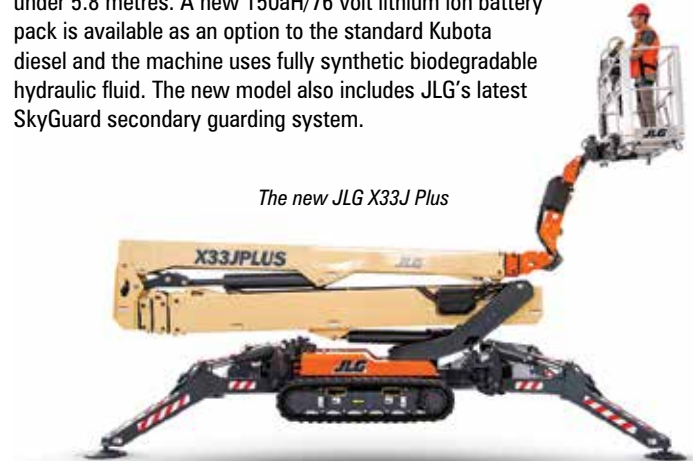
Custers launched its new 34ft Verda 12 tracked boom

JLG releases 33m X33J Plus spider lift

JLG has launched the European version of its 33 metre X33J Plus CCB spider lift, following the appearance of the ANSI prototype, the X100AJ at the Rental Show in New Orleans this February.

The X33J Plus has 16 metres outreach at an up and over height of 17.2 metres, with a 230kg unrestricted platform capacity. The unit features a four section lower boom/mast type riser which elevates to almost 90 degrees, plus a three section telescopic top boom and a jib with full 180 degrees of articulation.

Built for JLG by Hinowa, the machine has retractable non-marking tracks taking the overall width down to 1.2 metres and a patented quick platform disconnect system which reduces the overall length to just under 5.8 metres. A new 150aH/76 volt lithium ion battery pack is available as an option to the standard Kubota diesel and the machine uses fully synthetic biodegradable hydraulic fluid. The new model also includes JLG's latest SkyGuard secondary guarding system.



The new JLG X33J Plus

New location for Platformers' Days

The next Platformers' Days on the 18/19th September 2020 will move from its long-term location in Hohenroda, Germany to the Messe Karlsruhe exhibition centre Karlsruhe, in the south west of the country.

The event has been held in Hohenroda since it began in 1999. The organisers have stated that the all inclusive formula, with onsite catering and evening networking dinner will remain the same at the new venue. The show will not take place next year because of Bauma, the world's largest construction equipment show is being held.



Platformers' Days has been held in Hohenroda since 1999

Liebherr acquires Morrow Australia/NZ

Liebherr Australia has acquired the Australian and New Zealand operations of tower crane & hoist sales and rental company Morrow Equipment Company. Liebherr, will also assume all ongoing contracts and commercial arrangements, along with Morrow's three locations in Sydney and Brisbane in Australia and Wellington, New Zealand. All Morrow employees will also transfer to Liebherr Australia. The changeover will take place in January.

The Morrow Australia/New Zealand business is part of Oregon, the US based Morrow group, the exclusive Liebherr tower crane distributor in the United States, Canada and New Zealand, while handling Liebherr harbour mobile and container gantry cranes in Australia and New Zealand. No details of the transaction have been released.

A brief look at LiftEx

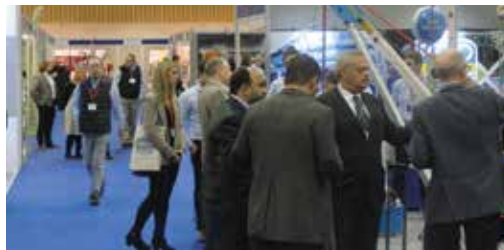
The Lifting Equipment Engineers Association held its annual Liftex conference/exhibition in Milton Keynes earlier this month. Around 60 companies exhibited including APS, Carl Stahl Evita, FLG Services, Hird, Modulift, Motion Software, SafetyLiftinGear and Sumner Manufacturing.



First time attendee APS



Carl Stahl Evita and Tensology



New owner for Trojan

KPS Capital Partners' subsidiary C&D Technologies is to acquire Trojan Battery, the leading supplier of deep traction batteries to the aerial work platform market which has been controlled by private equity firm Charlesbank Capital Partners since 2013. Other owners include the Godber family and the management team.

Pennsylvania-based C&D Technologies manufactures batteries and standby power systems and was acquired by KPS last August. The acquisition will combine two substantial battery manufacturers with complementary product ranges, to create a business with more than \$1 billion of revenues, eight manufacturing facilities and a wide geographical coverage. The transaction is expected to close by year end.

KPS
CAPITAL PARTNERS, LP

TABS 2019

The next Tag der ArbeitsBühnenSicherheit (TABS) - the German language safety conference for aerial work platforms - will be held on May 21st 2019 in Krefeld, Germany. The theme will be 'Can one be sure of being safe?' There will also be an opportunity to visit the nearby Palfinger Platforms' manufacturing facility. The event is jointly organised by Vertikal and IPAF.



Skyjack Lift Enabler goes global

Skyjack has formally launched its Secondary Guarding Lift Enable (SGLE) system as a worldwide option on its scissor lift range, including SJ12 and SJ16 mast type lifts. The enable button is designed to reduce the risk of entrapment caused by inadvertent machine operation while leaning over the guardrails. The company began testing the system last year and decided to move forward to the production stage earlier this year, initially as an option for the European, Middle East and Africa region, and now on new machines worldwide, it can also be easily retrofitted. The system requires the operator to press a tamper proof button on the left hand side of the controller as well as operating the joystick, in order to operate the lift up function.

The release of either the joystick or enable button will stop the lifting function immediately. The ergonomics are such that the operator's body is kept away from the guardrails, mitigating the risk of entrapment. The enable button is not required for lowering the platform or for driving - those functions are controlled by the joystick only.

The Lift Enabler button is intended to keep the operator within the platform area.



JF365

Light and powerful

Compact size for multiple applications and versatility.

MINICRANES | MINIPICKERS
ARTICULATED CRAWLER CRANES
TELE-CRAWLER CRANES
VACUUM & TOOLS

www.jekko-cranes.com

Speedy has reported a six percent rise in first half revenues to £194.6 million, mostly from access acquisitions and a strong improvement from international operations. Group pre-tax profits more than doubled to £13.2 million, net debt was marginally lower at £62.7 million, while capital expenditure increased 22.5 percent to £34.4 million.



Herc Rentals has posted nine month revenues of \$1.43 billion, up 13.5 percent on last year with a pre-tax profit of \$30.5 million compared to a loss of \$85.5 million last year. Year to date capital expenditure is \$617.5 million.



Telehandler manufacturer **Wacker Neuson** has reported nine month sales of €1.24 billion, up nine percent on the same period last year. While pre-tax profits jumped 71 percent to €166.2 million.



The Rental division of Brazil's **Mills** achieved nine month revenues of R151.3 million (\$40.5 million) up 15 percent on last year, in spite of lower utilisation and a shrinking fleet. Pre-tax losses were R10.3 million (\$2.8 million), less than half last year's loss of R24.2 million (\$6.5 million).



Ramirent has posted a 5.4 percent increase in nine month revenues to €551.7 million, with all five regions reporting increases. Pre-tax profits however were 17 percent lower at €47.7 million, although this includes a €31.5 million write off associated with the sale of the group's Temporary Space division. Capital expenditure was up 13 percent to €153.4 million.



Manitowoc Crane has reported a 25 percent rise in nine month revenues to \$1.33 billion, thanks to strong sales in North America and Asia. Pre-tax profit for the period was \$3.4 million, compared to last year's loss of \$34.9 million.



Terex Cranes has reported flat third quarter sales of \$950.5 million with an improved order intake, while the operating loss more than doubled to \$36.1 million.



Genie has posted nine month sales of \$2.02 billion, a 25 percent increase on last year, while operating profits jumped 67 percent to \$234.6 million. The order book at the end of September was \$527 million, up 48 percent on the same point last year.



Haulotte has reported nine month sales of €413.9 million a 17 percent increase, thanks to higher sales of new equipment.



Nine month revenues at **Snorkel** increased 23 percent to \$152.7 million, while operating profit excluding depreciation improved 12.5 percent to \$2.9 million.



Tadano reported flat first half sales at ¥82.3 billion (\$729.1 million) while pre-tax profits fell 32 percent to ¥5.7 billion (\$50.3 million) due to changes in product mix and exchange rates. The sales include a 6.2 percent rise in mobile crane sales to ¥48.51 billion (\$430 million), with sales in Japan shrinking 1.3 percent to ¥17.9 billion (\$158.8 million), while mobile crane exports increased 11.2 percent to ¥30.6 billion (\$271.2 million). These gains were offset by a five percent fall in loader crane deliveries to ¥9.6 billion (85.1 million) and a 24 percent drop in aerial lift sales to ¥9.2 billion (\$81.6 million). Other revenues - mostly parts, service and used equipment - were flat at ¥14.94 billion (\$132.4 million).



Manitou has reported nine month sales of €1.36 billion up 17 percent. The Material handling and Access division makes up €930 million of this, also up 17 percent, while Compact Equipment sales - mostly **Gehl** in the USA were 28 percent higher at €226 million. Parts and service revenues increased nine percent to €204 million.



Hiab posted nine month revenues up three percent to €831 million, while order intake was nine percent higher at €902 million. Operating profits fell 15 percent to €99.4 million.



Nine month revenues at **Cramo** increased 5.5 percent to €562.2 million, while pre-tax profits were five percent higher at €80.3 million. Capital expenditure was €157.3 million, almost five percent up on last year.



Mastclimber and hoist company **Alimak** has reported nine months sales of SK3.2 billion (€307 million) up seven percent, with pre-tax profits falling 5.5 percent to SK275 million (€26.5 million).



Nine month revenues at **United Rentals** increased 20.5 percent to \$5.74 billion mainly through acquisitions, although organic rental revenue growth was 11 percent. Pre-tax profits were just over \$1 billion, a 48 percent jump on last year.



Full year sales at **JLG** improved 25 percent on last year to \$3.78 billion, including a 23 percent rise in aerial work platform sales to \$2 billion and a 44 percent hike in telehandlers sales to \$948.9 million. The year end order book was more than double of last year at \$962.4 million, while operating profit for the period improved almost 50 percent to \$387.8 million.



For the full reports on all these stories check out Vertikal.net

Falcon expands operations

UK tower crane rental company Falcon has expanded its headquarters facility on the Shipdham Airfield Industrial Estate in Norfolk by leasing a further five acres of land, and purchasing a World War II airfield control tower, which it plans to refurbish and convert into a new training facility. The additional space extends the site to 23.5 acres. It also has a three acre yard in Manchester.

The company has also invested £2.5 million in new equipment including a 48.4 tonne/metre Fassi 485 loader crane on a Volvo FM460 chassis, two Potain HUP40-30 self-erecting tower cranes, and three luffing jib tower cranes including a 45 tonne Wolff 500B and two 36 tonne Jaso J380PA.



MBS to rebrand as Spiderlift

UK spider lift rental company MBS has purchased the trademark and web address of Spiderlift from Steve Hadfield who used it for his CMC dealership.

MBS will trade as Spiderlift from January but has no plans to change the registered company name. The company has also moved to new premises in Essex and added several new machines including a 26 metre

Hinowa Lightlift 26.14, a 30 metre Platform Basket 30T and two Falcon lifts - the 33 metre FS330-Z and a 42 metre FS420C.

The new MBS premises include an historic barn



Manitou sells stake in subsidiary

Manitou has sold a 26 percent stake in its wholly owned subsidiary Manitou Southern Africa to the South African charity Columba Leadership Trust.

The company operates from locations in Johannesburg and Cape Town with sales of ZAR439 million (\$31 million). Columba Leadership Trust works with schools in disadvantaged areas helping pupils to achieve more in their future careers. Manitou says the transaction will help it meet the highest standards of the Broad Based Black Economic Empowerment movement.

MANITOU
SOUTHERN AFRICA

Tadano opens Singapore parts centre

Tadano has opened a new 4,750 square metre spare parts centre in Singapore in cooperation with Japanese logistics company Nippon Express Group, which will handle all logistics, warehousing, shipping and export documentation. The company says the new operation will speed up parts delivery times.



A manufacturer specialising in hydraulic cranes since 1965

Lifting Tomorrow

Wherever we are, whatever we do, we must always maintain the principles of quality, excellence and innovation. These are the distinguishing features of Fassi's philosophy.

www.fassigroup.com





RISING ABOVE ITS CLASS

CLASS LEADING 91' (27.74 m)
WORKING HEIGHT

CLASS LEADING 34' (10.36 m)
UP AND OVER CLEARANCE

DUAL CAPACITY
RATING OF 500/750 lbs (227/340 kg)

SINGLE ACTION RISER
FOR OPTIMAL REACH ENVELOPE NAVIGATION

CLASS LEADING FUNCTION TIMES
GROUND TO MAX HEIGHT IN 60 SECONDS

The SJ85 AJ combines class-leading specifications and performance with features found only on Skyjack booms. The addition of the SJ85 AJ completes Skyjack's offering in the core 40', 60' and 80' boom classes.

www.skyjack.com

SKYJACK
simply reliable

- Italy's **CMC** has appointed **Fulvio Quercioli** as Italian area sales manager.
- Germany's **Merkel Autokrane** has taken the first 45t **Demag AC 45** in Germany.
- UK's **Heightsafe Systems** has opened a new depot near London.
- Polish rental company **Tommar** has taken four 39ft **Sinoboom GN4047** slab electric scissor lifts.
- US-based **Empire Crane Company** has appointed **Anthony Caltabiano** as service manager.
- Riwal** chief executive **Norty Turner** has resigned and left the company.
- Germany's **Hees and Knoll Dachtechnik** has taken a 33m **Ruthmann T330** truck mounted platform.
- Hatz** has launched a New Silent Pack for its H-series engines.
- Mammoet Deutschland** has opened an office in Hamburg, to support customers in Northern Germany.
- UK's **Merritts** has appointed **Lincoln Marks** as health and safety manager.
- Puerto Quetzal**, the largest port on Guatemala's pacific coast, has taken two **Liebherr LHM 600s**.
- Manitex** has appointed **David Chickowski** as western region vice president for North America.
- Partnerlift** - the German rental association - held its 14th annual meeting in Essen.
- Genie** has appointed **Kevin Spencer**, **Marcy Lemin** and **Scott Sensenbrenner** to its North American used equipment sales team.
- UK's **LC Vehicle Hire** has taken a **Palfinger PK 41002 EH** crane.
- UK's **Cadman Cranes** has taken a 90t **Liebherr LTM 1090-4.2 All Terrain**.
- Russia's **Oceania Shopping Mall** has taken a 29m **Falcon FS290** spider lift.
- France's **Joly Location** has taken the country's first 90m **Ruthmann T 900 HF**.
- UK access industry veteran **Graham Campbell** has passed away.
- UAE's **Sharjah Seaports Authority** has taken a new **Demag AC 100-4L All Terrain** crane.
- Bolton Council** in the UK has taken a 24m **Multitel MT 240** truck mounted platform.
- Florida's **Sims Crane & Equipment** has opened a crane operator training school '**Sims U**'.
- Deutz** has opened its new innovation centre in Porz, Cologne.
- Turkey's **Akem group** has taken six **Raimondi** flat top tower cranes.
- UK's **Ellis Crane Hire** has taken a 40t **Liebherr LTM 1040-2.1 All Terrain** crane.
- US-based **H&E Equipment** has promoted **Brad Barber** to CEO.
- Palfinger Platforms Italy** has appointed **Alfredo Careddu** as sales manager for Italy.



Fulvio Quercioli



Anthony Caltabiano



Lincoln Marks



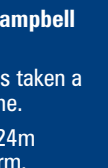
Kevin Spencer



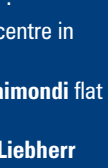
Marcy Lemin



Scott Sensenbrenner



David Lane



Graham Campbell



Alfredo Careddu

- Spain's **Alberto Piñeiro Lift** has taken a new **Ruthmann T510 HF** truck mounted lift.
- Genie** has appointed **Dominique Lujckx** and **René Reniers** as regional parts managers.
- Australia's **Wildmans Cranes** has taken a 20t **Tadano GR-200EX Rough Terrain** crane.
- UK's **McGovern Crane Hire** has taken a 50t **Liebherr LTM 1050-3.1 All Terrain** crane.
- US-based **Covey Crane Service** has taken a 40t **Manitex TC45142C** boom truck.
- Finland's **Ramirent** has updated its branding, giving its **Rami** man a facelift.
- Germany's **Könning Autokrane** has taken a 160t **Demag AC 160-5 All Terrain** crane.
- Singapore's **KNE- Kanamoto & JP Nelson** has opened in Malaysia and taken on the **Sinoboom** dealership.
- US-based **Custom Equipment** has appointed **Paul Allen** as Northeast territory manager.
- UK's **Berry Cranes** has taken a 90t **Liebherr LTM 1090-4.2 All Terrain** crane.
- UK's **Cadman Cranes** has taken a six tonne **Böcker AK 46/6000** aluminium truck crane.
- Singapore's **Sin Leng Industries** has taken an 80t **Tadano GTC-800** crawler crane.
- China's **Beijing Hongyu Zhiheng** has taken a number of **Skyjack** boom and scissor lifts.
- Roger Wagner**, managing director of **Ruthmann Schweiz** has left the company.
- UK's **Crowland Cranes** has taken a 40t **Liebherr LTM 1040-2.1**, with another on order.
- UK crane industry veteran **David Lane** has passed away.
- Dubai's **Manlift** has begun offering VR operator training.
- UK's **Star Platforms** has ordered 400 new aerial lifts worth £2 million.
- Mexico's **Auriga** has taken four 22.7t **Terex BT 5092** boom trucks.
- Germany's **Schwab group** has merged Schwab Baukranservice and Schwab Steinbock.
- Television Centre** in London, UK has taken a 32m **Palazzani XTJ 32** spider lift.
- Kennards Hire** has acquired **Byron Hire** in Byron Bay, New South Wales, Australia.
- India's **Raja Bhoj Airport** has taken a 27m **Platform Basket Spider 27.14**.
- Skyjack** has appointed **Andreas Bub** as sales manager central/eastern Germany.
- The UK's **Access Alliance** has launched an Associate Members scheme.
- US-based **United Rentals** has acquired Canada's **WesternOne Rentals & Sales** for \$91.8 million.
- Australia's **Kennards Hire** has acquired **Power Distribution Rentals**.



Dominique Lujckx



René Reniers



Paul Allen



Roger Wagner



Andreas Bub

- UK's **Southern Crane & Access** has taken a 20t **Kato CR-200Rf City** crane.
- Liebherr** has acquired the Australian/New Zealand business activities of **Morrow Equipment**.
- Genie** has appointed **Simon Meester** as VP global sales & marketing.
- Germany's **Scholpp** has taken a **Demag AC 220-5**, with an **AC 300-6** and **AC 700-9** on order.
- Germany's **Uka + Hauke** has taken several **Magni** telehandlers and scissors.
- Florida's **Select Crane Sales** has opened a new location in Branchburg New Jersey.
- UK's **Southern Cranes & Access** has taken a 90t **Liebherr LTM 1090-4.2 All Terrain** crane.
- Germany's **Gerken** has taken the first 30m **Teupen Leo 30T Plus** spider lift.
- Joachim Kolb** has joined the **Cometto** sales team.
- Manitex** has appointed **DC Bates Equipment** and **Dozier Crane & Machinery** as dealers.
- Scotland's **Stoddart Crane Hire** has ordered a 40t **Terex AC 40/2L All Terrain** crane.
- Access industry veteran **Ron 'Skippy' Card** has died at 65.
- UK **Dieci** telehandler dealer **A&Y Equipment** is rebranding as **Molson Compact Equipment**.
- US-based **Skyworks** has taken the 250,000th **JLG** boom lift.
- Crane manufacturer **Broderson** has appointed **Edward Hisrich** as vice president sales.
- Dubai's **Waterfront Market** has taken a 33m **Falcon FS330Z** spider lift.
- Benelux-based **Heros Kraanverhuur** has taken the 750th **Liebherr MK 88 Plus**.
- Canada's **ML Holdings Crane Group** has acquired Maryland's **Crane Rental Company**.
- Genie** has appointed **Arabian Supply Center (ASC)** as distributor for Qatar.
- Ruthmann Schweiz** has appointed **Roger Strässle** to its sales and training team.
- Mammoet** is to join **PortXL** partnership.
- UK's **AFI** has opened a new 'flagship' depot in Birmingham, UK.
- Germany's **Mikschi** has taken a 100t **Demag AC 100-4L All Terrain** crane.
- Spain's **Gruas Aguilar** has taken seven **Liebherr** cranes up to 1,200t.
- US contractor **Elmer W. Davis** has taken a **Terex BT 28106** boom truck.
- The UK's **CPA** has appointed **Steven Mulholland** as chairman.
- UK's **British Telecom** has ordered 128 aerial lifts from **CPL**.
- Niftylift** has confirmed the appointment of **Tony Hobbs** and **Tom James** to its UK sales team.



Simon Meester



Joachim Kolb



Ed Hisrich



Roger Strässle



Steven Mulholland



Tony Hobbs



Tom James

See www.vertikal.net news archive for full versions of all these stories