

50 YEARS OF ACCESS. 50 YEARS OF JLG.

“Every JLG® lift that leaves our plant carries my initials, so I insist on the best materials, tough design and production standards and thorough testing.

- John L. Grove, Founder, JLG Industries



In 1969, John L. Grove rallied a small group of people around one big idea—there has to be a better way to work at height. From there, he invented the first boom lift, started our company and pioneered the access industry. We continue to innovate today, engineering advanced equipment solutions for customers around the world.

Our first 50 years laid the foundation. Our next 50 solidifies a legacy.

See how at jlg.com/jlg50

SEE US AT BAUMA April 8-14 | Booth FS.904/5

JLG EMEA BV | Polaris Avenue 63 | 2132 JH | Hoofddorp | The Netherlands | europa@jlg.com

50th
JLG

Innovation first

The ARA Show was held this year in Anaheim California, the first time it has been held on the west coast since 2003. The association also officially changed the name from 'The Rental Show' to the ARA Show - a name that many have always used.

This year was unusual in that several companies held new model launches over for Bauma, changing a long-held tradition of the major North American manufacturers unveiling major new models at the show. While there were a good number of new products on show, most companies focused on unveiling new technology, from advanced telematics and new Apps to the use of a mobile phone as a remote controller. The other major focus was the adoption of the new ANSI standards. Here is a review of the major new product launches at the show.

Skyjack launched its new four model big RT scissor lift range from the 1,250kg capacity 33ft SJ9233RT to the 63ft SJ9263RT. The other two models are the 43ft SJ9243RT and 53ft SJ9253RT which now provides an 18 metre working height.



The SJ9253RT's new tyres

Skyjack's new SJ9253RT



The SJ9253RT's new Kubota installation.



The new Skyjack 9253RT lower controls

While the range is based on the popular SJ9250RT, it is in reality a totally new machine with a new scissor stack, a new drive train - adopted from the company's boom lifts, new levelling jacks, a new smaller Kubota engine which is mounted transversely so that it does not need to pull out to service, new cushion-type solid RT tyres, a totally new Skycoded control system and improved hose routing. Most of the changes have zero cost or save money allowing the company to maintain pricing on a significantly improved machine.

The company also introduced updates to its bread and butter slab scissor lift range, with a new tighter scissor stack allowing the use of less counterweight, new Skycoded lower controls which incorporate the angle sensing and overload control as well as improved diagnostics and updated Elevate telematics programme. Other improvements include a new one switch emergency descent system, updated pothole protection to avoid debris build-up while providing 45 percent more ground clearance. The updated models have new simpler, more



C&a

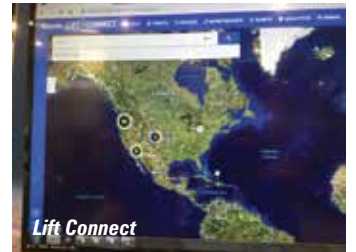
ARA show



The new SJ4740

logical nomenclature - SJ3219, SJ3226 etc, so for example the 40ft SJIII 4740 now becomes the SJ4740.

Genie had much to talk about and showed the new S-45XC boom lift, but the star of the show was its new telematics programme - Lift Connect - the amount of data that it can now provide is quite mind boggling.



Lift Connect

The company is offering three years' free subscription to the service with every new model. It also surprised with the unveiling of an optional lithium ion battery pack for its slab scissor lift range. Installed on a 19ft GS-1932, it has the same life between recharges as the standard battery pack, however



Genie's new Lithium ion battery pack



The new Genie S-45XC

charging is much faster and short spells of 'opportunity charging' are possible. The battery also holds its charge when stored, requires zero maintenance and will last a good deal longer than lead acid batteries. Genie also launched a number of accessories - initially for the North American market - including a material carrier and the Access Deck attachment - a step up device to reach difficult areas. One is also available on boom lifts.



Genie's material carrier and also roof exit gate



Genie's Access Deck attachment

Finally, for many the ARA was the first chance for many to see the new 13ft GS-1330m micro scissor lift. There were numerous similar machines at the show, with all but one of them made in China.

Custom Equipment - the pioneer of the micro scissor lift with its low overall weight and compact dimensions which has long proposed such scissors as better alternatives to mast-type lifts - unveiled two new self-propelled scissors and a new push around, the five metre working height PA-1030.

It has also updated the entire product line and adopted a new nomenclature system. Push around models will carry the 'PA' prefix, the regular self-propelled models 'PS' and the 'zero turn' models 'ZT'. All meet the new ANSI standards.

The most significant new product is the 16ft ZT1630 - the highest machine the company has ever built - and the smaller 12ft ZT1230 which

replaces the HB1230. The 16ft unit weighs 934kg while the 12ft weighs 755kg. Platform capacity on both is 250kg although the ZT1630 is limited to one person, while the ZT1230 can handle two. Overall length of both machines is 1.57 metres with a 760mm overall width, making them longer than the original but with a



The new Genie GS-1330m



The new Custom PA1030 push around lift



Custom Equipment's new ZT1230



Custom Equipment's new 16ft ZT1630

VISIT US!
Hall FS 1105/3

bauma
APRIL 8-14, 2019, MUNICH

INSULATED

UNIQUE TECHNOLOGICAL SOLUTIONS FOR WORKING ON ELECTRIC LIVE LINES UP TO 500 KV

- Different insulation standards: 12-46-138-500 KV according to CEI EN 61057
- Working height from 12 to 31 m
- Innovative applications: VAN MOUNTED AND CRAWLER MOUNTED
- Optional winch

Since 1960

www.officinecomet.com

The LGMG North America stand



lower stowed platform height of 520mm and 603mm respectively. Other companies with micro scissor lifts included LGMG - exhibiting aerial lifts at the show for the first time and launching the company's new distribution company LGMG North America based in Chambersburg, Pennsylvania. The company is working with ex-JLG president Craig Paylor, informally assisted by Rusty Kaylor. The company showed a range of scissor lifts including both electric and hydraulic drive slab electrics, including the 14ft SS1430 and 19ft SS1932. The 14ft is a sister machine to the 12ft SS0507 the company offers elsewhere and has an overall length of 1.53 metres, but while the 12ft is 760mm wide and weighs 880kg, the 14ft is 810mm wide and weighs 970kg. The larger SS1932 is much longer at 1.86 metres and weighs 1,560kg.



GMG's updated I-Power technology controller

GMG had much to talk about including its improved I-Power technology control software. The company used its new 15ft 1530-ED micro scissor lift to demonstrate how the steering circuit power draw varies with speed to produce a quieter, smoother machine that consumes less power. It says that the steer function draws the most power - even more than the drive - thus the benefits of lower draw. It also has a special creep speed for ultra-fine positioning. GMG's overhead alert system and advanced diagnostics are fully integrated with no relays in sight.

JLG unveiled two more models in its new Rental slab electric scissor lift line. The 26ft 2632R and 32ft 3246R join the current 19ft 1932R and 40ft 4045R with rear axle direct electric drive, variable tilt technology with visual indicator, a new improved pothole protraction system and all steel deck etc.

It also demonstrated a new App that allows a smartphone to be used as a very accurate remote controller for drive and steer on slab electric scissor lifts when stowed, for safe loading/unloading.



Other products included the new Enhanced Detection System (EDS) with multiple ultrasound beams and cut-outs for working around



The 19ft LGMG SS1932E electric drive scissor lift



The JLG new R Series range is now complete

BRONTO SKYLIFT

Safety above all



Safety | Uptime | Reliability

That's what Brontos are known for.

Three heights, three ranges,
one family at bauma
S35EM | S70XR | S90HLA

Join the Bronto family:

bauma

APRIL 8-14, 2019. MUNICH
Stand FS1203/3

brontoskylift.com



The JLG EDS proximity system



JLG's new SkyGuard SkyLine secondary guarding system. It has reserved its more significant introductions for Bauma.

MEC unveiled a new 45ft straight boom - the 45-J - with two section boom and jib joining the 60ft boom and 45ft articulated boom lift, and a new compact Rough Terrain scissor lift range - the 40ft 4069 and a 33ft 3369 - both available in diesel or electric versions.



The new MEC 4069RT available with electric or diesel power

Manitou showed no new products apart from the French-built Gehl version of its MT420 ultra-compact telehandler. It also confirmed that it will launch five more boom lift models in the USA this year.

Snorkel introduced the final version of its 40ft 400S telescopic boom lift and more Snorkel-badged Faresin telehandlers.

Finally Trojan battery generated a good deal of interest with its new Trillium fully self contained lithium ion battery which can easily replace regular lead acid cells.



The Trojan Trillium lithium ion battery



The Haulotte stand



The EM Utility Vehicle Scissor lift offers a 13ft platform height, 5.5m working height and can travel at 12mph



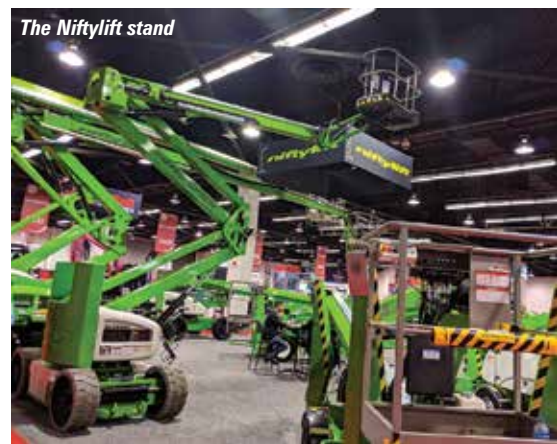
The new MEC 45-J boom lift



The Snorkel stand with new telehandlers



Forever ODM is in the process of redesigning its scissor boom to the new ANSI standards



The Niftylift stand



A 12 metre Bluelift C 12 (32) with vertically telescoping platform attachment

Do you want a robust & compact wheel drives for your hybrid aerial platforms?

Bonfiglioli 605WE guarantees maximum efficiency and compact size. The integration of all the components in an optimized space gives the machine builder the opportunity to benefit from a cost-effective solution easy to maintain.

Bonfiglioli
Forever Forward

www.bonfiglioli.com |

bauma
Want to know more? Visit us
Bauma 2019
8-14 April
Munich, Germany
Hall A3 - Booth 337

→ VISIT US!
FS.1304/2

bauma
APRIL 8-14, 2019
MUNICH

25D

www.socoage.it

SOCAGE