

New owner for A Mini Crane Hire

UK spider crane rental company A Mini Crane Hire has been acquired by entrepreneur, Mark Davenport, from owners Pete Piekarus and Anthony Travis, in what is described as a seven figure deal. Founded in 2009, A Mini Crane Hire runs a fleet of 50 spider cranes, a mini crawler and two tonne pick & carry cranes as well as a range of glass handing robots, attachments and other equipment, from locations in London and Liverpool

Davenport who joined the A Mini Crane board earlier this year, says he has ambitious growth plans over the next four to five years. They include expanding operations - possibly with additional outlets - establishing a strong management team, and an immediate investment of £1.5 million to refurbish and update the existing fleet.

Davenport said: "The business has fought its way through lockdown, with sales now back to where they should be, with annual turnover expected to be in excess of £5 million. The company has recruited two new sales people and manager for the Liverpool depot. We also remain fully committed to sustainability and will continue to make incremental changes that will serve our community and benefit the planet. With that in mind, we will welcome nine new electric powered cranes to the fleet later this year."

Davenport who joined the A Mini Crane board earlier this year, says he has ambitious growth plans over the next four to five years. They include expanding operations - possibly with additional outlets - establishing a strong management team, and an immediate investment of £1.5 million to refurbish and update the existing fleet.

A Mini Crane Hire's new owner Mark Davenport (L) with retiring owner Peter Piekarus.



First all electric Maeda

Maeda has launched its first all electric spider crane, a battery powered version of the 2.82 tonne capacity MC285C-3.

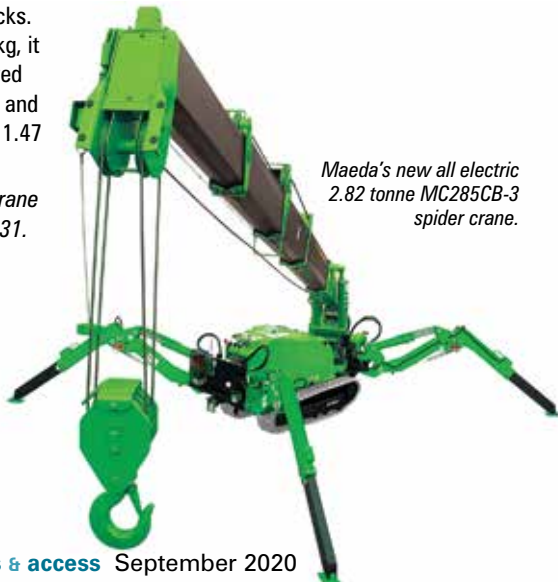
Offering similar dimensions and capacities as the diesel equivalent, the new crane features a lithium-ion battery pack which provides up to nine hours of continuous operation and can be fully charged in just 3.5 hours.

Features include HBC radio remote controls, a seven inch monitor display, programmable load moment limiter, data logger, multi outrigger positions and non-marking tracks. Weighing 2,000kg, it has overall stowed width is 750mm and overall height of 1.47 metres.

See the spider crane feature on page 31.



Maeda's new all electric 2.82 tonne MC285CB-3 spider crane.



Comansa updates the 11LC flat top range

Spanish tower crane manufacturer Comansa has updated its 11LC range of flat top tower cranes and will shortly incorporate similar changes into its 16LC line. The company will also introduce a six tonne version of its eight tonne 11LC150, taking the 11LC range to five models with capacities of five, six or eight tonnes with jib lengths up to 65 metres and jib tip capacities of 1,700kg, or 1,870 with PowerLift.

The improvements include changes to the cathead and jib sections, enabling easier access to the trolley, while a new single trolley that enables a manual single/double reeving change by the operator on the ground is now an option. New potentiometers on the lift and trolley hoists are said to improve control smoothness, and the inching for precisely positioning loads. A new 18kW hoist is available on the six tonne cranes requiring less power while maintaining drum capacity and speeds. The Power Lift system becomes standard, providing a 10 percent higher capacities when operating at reduced speeds.

The hoist motor options now feature the Effi-Plus system which increases the lift and lower speeds when lifting lighter loads, without increasing power consumption. The cranes are also equipped with the new 'M' size Cube cab, with a more comfortable seating position, together with a resized and redesigned platform for an easier erection and maintenance. The Quick Set system, already fitted to the 21LC series, will now be available as an option on the 11LC family, helping simplify and speed up commissioning and calibration of a tower crane once erected.



Comansa has updated its 11LC range of flat top tower cranes



The new M size Cube cab.

MBO for Ommelift Germany

Yama Saha, the managing director of Ommelift Deutschland since 2015, has acquired the company from Ommelift and changed its name to Sahalift. The name change reflects the fact that the business now sells a wide range of access products alongside Ommelift products. They include Airo boom and scissor lifts, Isoli truck mounted lifts, Almac tracked scissor lifts and boom and Aichi tracked boom lifts. The business was established in 2005 when Ommelift decided to replace its dealer with a wholly owned sales outlet.



Dingli buys into Teupen

Chinese aerial lift manufacturer Dingli has acquired a 24 percent stake in German spider lift manufacturer Teupen. The investment follows Dingli's purchase of a 20 percent stake in Magni Telehandlers in 2016 and a 25 percent stake in MEC Aerial Work Platforms in 2017.

Teupen was founded in 1977 by Bernd Teupen to produce a range of furniture hoists and introduced its first spider lift in 1987. In the 1990s the business was acquired by managing directors Alfons Thihatmer and Andreas Grochowiak. In 2008 they sold a majority stake in the company to private equity firm Nord Holding. Hanover Finanz took the majority stake in the company in 2012 and remains the controlling shareholder.

The two companies also plan to open a new Dingli European Research & Development centre, along similar lines to the one Dingli has with Magni in Italy. A statement from Dingli said: "Through technology sharing with Teupen, both parties will jointly develop a series of self-propelled boom lifts with high capacities and working heights of 36 to 50 metres. We will also cooperate with a full series of electric powered machines, including boom lifts, scissor lifts and vertical lifts."



Hiab UK tele crane package

Hiab UK has launched 1.84 tonne/metre T-CLX 018-2 telescopic crane on its T-Boom framework system. The crane features a four section boom with a maximum capacity of 995kg at 1.2 metres radius and can take 430kg to its maximum reach of 4.2 metres. Aimed at sole traders and smaller supply chain operators, such as builders and landscape gardeners, the T-Boom framework system allows local installation centres to mount the crane to any corner of a chassis in less than a week without the need for welding.



The Hiab T-CLX 018-2 telescopic can be mounted in less than a week to any corner of the chassis

Hiab UK managing director, Ian Mitchell, said: "In the last six months, the market place has changed considerably for businesses and many are looking for greater flexibility when it comes to investing in new equipment. The T-Boom Frameworks is a quick full body and crane solution for people handling close range heavy lifting needs. There is no welding on installation and the crane can be mounted on any corner of the chassis."

The new 1.85 tonne crane is aimed at smaller companies and 3.5 tonne trucks



Nifty Stage V Hybrids

Niftylift has launched a new 'Gen2 Hybrid' diesel/electric hybrid power pack, for its range of hybrid articulated boom lifts which currently include, the HR15, HR17, HR21 and HR28. Key features of the new generation include Stage V diesels, along with further improvements to the electric power train. As on earlier versions, they can be used as all electric machines, or all diesel with the electric motor providing an automatic power boost to the engine when the platform encounters challenging ground conditions or steep slopes. The new drive train is said to offer fuel savings of up to 50 percent as a diesel with significantly lower emissions without sacrificing performance.

The Niftylift hybrids use a smaller engine than would otherwise be required, and do not require particulate filters or Ad Blue, while offering the same power and performance of a larger engine. A new heavy duty AGM maintenance free battery pack is now standard. It can be recharged from a regular 110 or 230 volt AC power source, with the machine's 'Diesel-Ren' - feature while the engine recharges the batteries in half the time. When the machine is being used in diesel mode, any surplus power is used to top up the battery pack. See Hybrid lifts - page 42.

Niftylift has launched its new Gen2 diesel/electric hybrid power pack initially for the HR21 and HR17



The new power pack is said to offer up to 50% fuel savings over a regular diesel

26m Ommelift insulated hybrid spider

Ommelift has launched the new 26.5 metre 2650 iRX-46kV insulated hybrid spider lift. Shown as a prototype at the Utility Expo in Kentucky, last year, it has a Category C level insulation rating with each lift element insulated with Waco fibre glass sections.

It has been designed for working in the vicinity of power lines with a working height of 26.5 metres an outreach of 12.2 metres at a 13 metre up & over height with the 136kg unrestricted platform capacity.

The 2650 iRX is ANSI A92.2 compliant, and features include vertical wall tracking and hydraulic power to the platform for chainsaws and other tools. Weighing 6,075kg, it has an overall stowed width of 1.1 metres, is 10.24 metres long, and has an overall height of 2.4 metres.



Ommelift's 2650 iRX-46kV features insulated sections on each lifting element

The diesel/battery hybrid power pack with re-charge is standard, as are radio remote controls and 180 degrees platform rotation.

Chief executive Axel Thøgersen said: "This new lift provides a safe foundation for trades such as tree workers to work safer when close to powerlines."

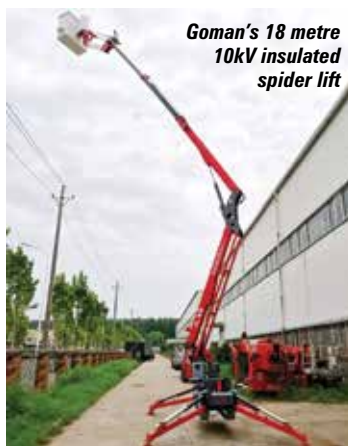


The platform includes hydraulic power for attachments

Goman insulated spider lift launch

Chinese manufacturer Goman has launched a new 18 metre X18D 10kV insulated spider lift for applications such as tree trimming. The X18D features a long riser/lower boom and three section telescopic boom made of hot dip galvanised steel sections. It is topped by a fibreglass articulating jib and a fibreglass platform with a two person rating. Maximum outreach is 7.2 metres with 200kg platform capacity.

Hydraulically adjustable tracks extend from 766mm to 1.15 metres while also increasing the ground clearance and overall height by 134mm. Weighing 2,380kg, the machine has a working footprint of 2.79 by 3.83 metres, an overall width of 860mm with small basket or 1.45 metres with larger option. Overall height is just over 2.1 metres, and it has an overall length almost six metres with the basket installed.



Goman's 18 metre 10kV insulated spider lift

GSR updates 20m B200T

Italian aerial lift manufacturer GSR has updated and remounted its 20 metre B200T telescopic truck mounted lift, to become the B200T4. The lift was previously mounted on Nissan Cabstar or Renault Maxity chassis, with Nissan production coming to an end, GSR decided to switch to the new compact Iveco and Mercedes Sprinter chassis.

On the Iveco chassis the B200T4 includes inboard levelling jacks/stabilisers, up to 10.85 metres of outreach with an 80kg capacity or 7.5 metres with 250kg and overall length is 6.96 metres. On the Mercedes with variable out and forward front outriggers, it offers



The B200T4 has a 20m work height



up to 14 metres outreach with 80kg capacity or 9.5 metres with 250kg. Overall length is just over seven metres.

The GSR B200T4 is available on compact Iveco or Mercedes chassis.

JDL a success

French crane and aerial lift exhibition JDL bravely opened its doors earlier this month, becoming one of the first equipment exhibitions since March. Supported by more than 80 exhibitors there were plenty of new products on show, although with fresh outbreaks of Covid-19 cases visitor numbers were clearly down.



Show manager, Frédérique Taraquois, said: "We held on till the end together to hold the 2020 edition of JDL, decidedly like no other! Thank you to all our exhibitors for staying with us, for struggling often until the last moment to be able to present their latest innovations, and models. Thank you to all our visitors for being here and making the trip to this unique meeting of the profession."

1,000 tonne test load for 800 tonner

Liebherr has completed a 1,000 tonne overload test with its LR 1800-1.0 crawler crane equipped with the new 800 tonne heavy duty boom head section, ballast trailer and 1,000 tonne hook block.

The crane, which is rated at nine metre radius with a 57 metre boom, was set up with 70 tonnes of central ballast, 170 tonnes of main superstructure ballast, 228 tonnes derrick ballast and a 33 metre derrick boom. It was also tested with a new ballast trailer in place of a suspended ballast. Liebherr has delivered 10 LR 1800-1.0s across Europe, North America and Asia all with the standard 650 tonne 'S' boom head.

Product manager Jens Könneker said: "The standard head is more than adequate for the vast majority of jobs. However, the LR 1800-1.0 is designed to handle its maximum capacity in real world conditions. That is why we built the 800 tonne head to go with a new 1,000 tonne hook block, and now we have tested it as well."

The new ballast trailer



The Liebherr LR 1800-1.0 lifts the 1,000 tonne test load



First Platform Basket 43T Hybrid

Elite Access Rentals has taken delivery of the first 43 metre Platform Basket Spider 43T Hybrid spider lift in the UK. Supplied by UK distributor Promax Access, the 43T boasts a seven section telescopic boom, topped by a two section telescopic articulated jib. It offers a 43.2 metre working height and an outreach of 17.3 metres with 136kg in the platform, while maximum platform capacity 330kg.

Power comes from a Stage V/Tier 5 Kubota diesel engine or a lithium-ion battery pack, while features include radio remote controls, multi-position and auto levelling outriggers, continuous 360 degree slew and an on board generator providing power, water and compressed air to the platform. It has also been supplied with a 350kg winch for lifting duties.

Based in Bradford, Elite Access Rentals is a joint venture between Jonathan Hawksworth of truck mounted rental company Clearview Services and Adam Gallagher of spider lift rental company Tracked Access Platforms.



Elite's new Platform Basket T43 Hybrid

PALFINGER

MANOEVRABILITY AND DYNAMICS COMBINED

PALFINGER P 300 KS FL

The P 300 KS FL achieves top marks for its compact design, working range, manoeuvrability and user-friendliness. The Powerlift-System enables a safe pickup and transport of heavy and bulky parts.



PALFINGER.COM

**BRONTO
SKYLIFT**
Safety above all

Performance & uptime



Manuals & bulletins



Service history



Service cycles



Do you know how your
platforms are doing right now?

Bronto Skyliftfleet has all the data you
need to maximize the uptime and
productivity.

www.brontoskylift.com/service

The new L27A-XS has an
overall length of 9.1 metres



New Rosenbauer rescue platform

Fire and recovery vehicle manufacturer Rosenbauer has added a new 27 metre L27A-XS 3.0 ladder platform to its XS (Extra Small) range. Joining a 32 and 42 metre model in the range, the new platform is mounted on a two axle Mercedes Atego 1527 F chassis and features a five section ladder boom topped by a 4.35 metre jib.

The new machine also includes a new fall protection system with up to 18 harness attachment points and a new personal fall prevention device, in which the safety belt retractor is located on the person so that it is not pulled over edges as the belt retracts and unwinds.

Maximum platform capacity is 500kg and can be used as an anchor point for abseiling operations or when rescuing a person from a shaft, as well as for crews working outside the platform, such as stepping onto a balcony to help an injured person into the basket.

Basic firefighting equipment includes a permanently mounted aluminium tube in the upper ladder section, a water supply integrated into the platform structure, water curtain jet nozzles in the platform floor, and two monitors stowed in the equipment chests.

The L27A-XS includes all third generation XS technology from the other two models, including the special XS boom configuration with folding jib and an inwardly offset swivel joint, enabling them to be used to their full extent in the tightest spaces. Additional features include zero tailswing, the ability to set up close to a façade with an unrestricted five person platform rating.

Tobias Deissler of Rosenbauer, said: "The goal of the new L27A-XSC was to create a vehicle that is ideal for use in the narrow streets of historic town centres."



The platform's basket can
be adapted for a range of
rescue applications



CEO change at Manitowoc

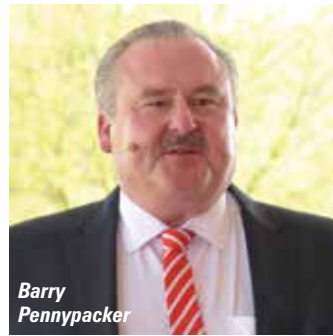
“Tariffs may not be the best solution”

In early August, Manitowoc’s chief executive Barry Pennypacker, ‘stepped down’ to be replaced by executive vice president of cranes Aaron Ravenscroft. The change was immediate, and no reasons were given for Pennypacker’s sudden departure. Speaking to Cranes & Access, Ravenscroft said: “Barry was ready to leave. He had made the necessary cutbacks, stabilised the balance sheet, and already done what Barry does best”.

Shortly after taking over, Ravenscroft made a statement that indicated that the company’s position regarding the Department of Commerce’s investigation into US crane imports, instigated by his predecessor had changed. He stated: “After my initial reviews, I believe that tariffs may not be the best solution. And while we believe in fair trade, I do not want to burden our customers with additional costs, particularly in this environment. We believe that tariffs would inhibit crane demand and further deteriorate already difficult market conditions.”

In an interview with Cranes & Access, Ravenscroft admitted that the company was looking into several alternatives. When asked, he did not dismiss requesting a withdrawal of the petition. However, the process is now out of Manitowoc’s hands, although there is precedence of a withdrawal request being honoured.

Ravenscroft added that the company was more interested in encouraging the US Government to consider alternatives, such as enhancing ‘Buy America/Hire America’ provisions for Federally funded construction projects and providing grants for local R&D in the crane industry.



Barry Pennypacker



Aaron Ravenscroft

Ravenscroft played no part in the filing of the petition back in December, he was working from the Potain offices in France and only arrived back in the USA a few months ago. His first action was to sit in on a virtual meeting of SC&RA members who lambasted Manitowoc for trying to block crane imports from other manufacturers in a bid to push up prices. Manitowoc cranes are sold under the Grove and Potain brands and the company imports all All Terrain and tower cranes from Germany and France respectively. In the meantime, the process grinds on.



SKYLINE & HIGHSPARKS

TOWER CRANES SALES | RENTAL | SERVICE | MAINTENANCE

- 2,200 cranes
- 550 people
- 24 sites in 8 countries
- 100 years of combined experience



Skyline Arcomet / Head office
609 London Road | West Thurrock | Essex | RM20 3BJ
T. +44(0)1708 860534
sales@skylinearcomet.com
www.skylinearcomet.com

a leader in experience and innovation

Highsparks
Thorniehall Farm | Douglas | Lanark | ML11 ORL
T. +44(0)1698 207000
enquiries@highsparks.co.uk
www.highsparks.co.uk

Financials round-up

Maxim Crane Works has acquired the Montana assets, locations and business of **NCSG Crane and Heavy Haulage** and launched a cash offer to repurchase up to \$125 million worth of its 10.125 percent Notes which mature in 2024.



Tadano's first quarter revenues increased 7% to ¥43.2 billion (\$407.3 million), while last year's pre-tax profit of ¥1.35 billion (\$12.8 million) compares with a loss of ¥694 million (\$6.5 million) this year.



Wacker Neuson's revenues for the first six months were €796.7 million, 16.4% down on last year. Much of the reduction occurred in North America, with European sales just 8.8% lower at €631.4 million.



First half revenues at **United Rentals** were \$4.06 billion, 8% down on the same period in 2019. Pre-tax profits were 16.5% lower at \$477 million. Second quarter sales slipped 16%, while pre-tax profits declined almost 28.5 percent to \$251 million.



Manitowoc's half year revenues declined 28.5% to \$657.5 million with a pre-tax loss of \$17.9 million, compared to a profit last year of \$26.5 million. Second quarter revenues were 35% lower at \$328.3 million, with a pre-tax loss of \$12 million compared to \$49.9 million in 2019.



US based rental company **Equipment Depot** has acquired Massachusetts based **New England Industrial Truck**.



Hiab and Kalmar owner **Cargotec** has issued a positive trading statement, stating that the third quarter was 'better than expected' with order intake and operating profit both improving compared to the second quarter.

Manitex, owner of PM, Oil & Steel and Valla, reported half year revenues down 23% to \$85.8 million, with a pre-tax loss of \$9.4 million compared to last year's pre-tax profit of \$4.6 million. The backlog at the end of June was \$44.3 million but recovered to \$48 million in July thanks to PM loader cranes.



Manitou has formed a partnership with robotics specialists **Effidence** to develop, manufacture and distribute a range of logistics robots.



Haulotte reported first half revenues of €222.7 million, down 35% on last year, with equipment sales falling 36% to €195.6 million, rental down 38% to €6.8 million, and service down 21% to €20.3 million. Most of the drop off came in the second quarter where revenues dipped 50%.



First half revenues at **Genie** dropped 58% to \$935.6 million with an operating loss of \$10.9 million, compared to a profit last year of \$145.9 million. Second quarter revenues were 52.5% lower at \$413.9 million, with a small pickup in June, while the operating loss was \$5 million compared to a profit last year of \$86.3 million.



Manitou's first half revenues fell 35% to €761.6 million with net income of €13.5 million, down 78% from year. The Material Handling and Access division had sales of €496 million, down 40%, with an operating profit 70% lower at v19.7 million.



Ashtead, owner of **Sunbelt Rentals** in the USA, Canada and the UK, has reported first quarter revenues of £1.2 billion, down 7%, with pre-tax profits dropping 38% to £192 million. US sales declined 7% to \$1.28 billion, with an operating profit 27.5% lower at \$324.1 million. Canadian revenues were 5% lower at \$90.4 million, with a \$100,000 loss. While UK revenues dropped 6% to £123.3 million, with an operating profits down 46% to £8.3 million.



Australian crane and access rental group **Boom Logistics** had full year revenues 2% higher at \$185.5 million, with higher pre-tax losses of \$12.5 million.



Special Equipment, the Netherland's based re-rent division of Mateco, has seen a steady pick up in utilisation and now expects moderate year on year growth.

US crane rental group **TNT** has filed for voluntary Chapter 11 protection in the Delaware bankruptcy court and is looking to restructure via a debt for equity swap.



Alimak is to acquire **Verta Corporation**, a USA based Building Maintenance Unit service provider.



Snorkel's first half revenues almost halved to \$60.2 million with a loss before interest and tax of \$6.2 million compared to a profit last year of \$1 million. Most of the reduction occurred in the second quarter when sales plunged 72.4% to \$16.8 million.



UK rental company **Aspire Platforms** has acquired the alloy tower/platform rental operations of **London Tower Services (LTS)** taking it into the London market two years after it was set up between Manchester and Liverpool.

First half revenues at **H&E Equipment Services** fell 13% to \$564.3 million, with a pre-tax loss of \$35.3 million, compared with a profit of \$50.2 million last year.



For the full reports on all these stories check out Vertikal.net

Altec tops boom truck range

The AC30-101b features a four section 30.8 metre main boom



US crane and truck mounted platform manufacturer Altec has added the 30 ton (27.2 tonne) AC30-101b to the top of its standard boom truck range.

Mounted on a three axle chassis, the AC30-101b features a four section 30.8 metre boom plus optional 7.9 to 13.4 metre telescopic swingaway extension to provide a maximum tip height of 47 metres. It can handle its maximum capacity at a 1.5 metre radius and take 680kg to the maximum radius of 30.7 metres. Features include

the company's Load Moment & Area Protection (LMAP) system and three position out and down outriggers. Additional options include a two man work platform attachment and radio remote controls.

The company's six model 'behind the cab mount' low profile range now offers capacities from 18 to 30 tons.



France Elévateur ramps up

Vehicle mounted lift manufacturer France Elévateur has added a second production line for its 12 metre van mounted lifts in response to rapidly growing demand from the telecoms sector in France. Since Lockdown eased, the company has been working two eight hour shifts at its plant in Flavigny sur Moselle while it set up the new line. It has also employed eight new production staff and plans to add a further 40 employees including electrical technicians, mechanics, hydraulic and fitter finishers.

The changes will allow the company to build an extra 20 platforms a month, most of which will be the 121 FT which it claims is well suited to the telecoms market.

Director Charles Goffin said: "The market is buoyant, driven as a whole by telecoms and fibre. So today there is a lot of stress on deadlines and unfortunately we are unable to offer short enough lead times. The new assembly line for 12 metre vans will help solve that problem."



The two 12m production lines

AIRO
SELF-PROPELLED AERIAL PLATFORMS

Lift your business to the next level

Manlift Evolution

AIRO by TIGIEFFE
E-mail: info@airo.com - www.airo.com

Follow us

LIKE YOU WERE NEVER HERE

EMISSION-FREE, NOISE-FREE EC BOOMS FROM JLG



Now you can work in sensitive areas without disrupting the surrounding environment. Powered by safe, quick-charging lithium ion batteries and two electric motors, JLG® EC booms deliver clean operation and greater energy efficiency on any job site. Experience uncompromised performance with the flexibility to work inside or out with a single machine.

Learn how all-electric booms can help you meet environmental regulations without impacting productivity at jlg.com/EC-boom

JLG®

- UK's **Bryn Thomas Cranes** has appointed **Andy Unsworth** as commercial director
- Collé Rental & Sales** has taken 30 Valla pick & carry cranes
- UK's **PP Engineering Crane Hire** has taken a 60t **Liebherr LTM 1060-3.1**
- Xtreme Engineering** has taken the first **Tadano ATF-120-5.1** in Australia
- Germany's **Mateco** has broken ground on new headquarters
- Northwest Crane Hire** has taken Australia's first **Liebherr LRT 1100-2.1**
- PM** has appointed **Stefano Ghesini** as sales director of Italy and **Marco Castiglione** as export sales director
- Hyva** has appointed **Ballinlough** in Ireland and **S.M. Components** for N. Ireland
- UK's **Mainline Access** has taken two 84ft **Holland Lift HL-275 D25** scissor lifts
- Joe Broughton** and **Kyle Waller** have joined the **MEC** sales team
- Merlo UK** has appointed **Shellplant** as a dealer
- Manitou** has launched the **MLT 420** telehandler in USA
- Germany's **Wasel** has taken two 110t **Liebherr LTM 1110-5.1s**
- Germany's **Arbeitsbühnen Hoffmann** has taken 14 **Airo** scissor lifts
- Spain's **Grúas Cigales** has taken a 100t **Tadano ATF-100-4.1 All Terrain**
- Scott Cornwall** of **Bernard Hunter Mobile Cranes** has died
- UK's **Bella Access** has purchased 24 **JCB** scissor lifts
- The **HAE** has appointed **Paul Gaze** as CEO
- France's **Franche Comté Levage** has taken a **Spierings SK597-AT4**
- Ginno Debrabandere** of Belgian company **Duma** has died
- Sinoboom** has appointed **ATN** as distributor for France.
- Belgium's **Vertimac** has appointed **Thomas Méheust** as Nagano sales director
- Germany's **Zeppelin Rental** has taken the first Stage V **Genie S-65 XC** boom lifts
- UK's **Ken Harrop Crane Hire** has taken a 5t **Klaas K950PHX** crane
- Collé Rental & Sales** has opened a new German location - Leipzig-Gera
- Terex Cranes** has appointed **SNM** as tower crane dealer for France
- JMG Cranes** has appointed **Foster Cranes** as UK dealer
- UK's **Hird** has recruited **Glyn Goodwin**, **Matt Jinks** and **Sasha Facey**
- Switzerland's **Welti-Furrer** has taken three **Liebherr All Terrains**
- Australian crane entrepreneur **Robert Way** has died
- Haulotte USA** has appointed **Five Bo** for western Canada
- Jekko** has produced its 2,000th crane
- Australia's **Baden Davis Crane Connection** is the new **Kobelco** dealer for NSW
- UK's **Spiderlift** has taken a **Teupen Leo 30T Plus** spider lift
- Manitou** has launched the **VJR 100** mast boom in North America



Andy Unsworth



Marco Castiglione



Stefano Ghesini



Joe Broughton



Kyle Waller



Paul Gaze



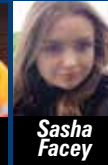
Thomas Méheust



Glyn Goodwin



Matt Jinks



Sasha Facey

- Welsh company **R. W. Christopher Crane Hire** has taken a 90t **Liebherr LTM 1090-4.2 All Terrain**
- Switzerland's **Fanger** has taken two **Demag All Terrains**
- Alimak COO Stefan Rinaldo** is leaving the company
- Julie Houston Smyth** and **José Miguel Peña** have joined the **Sinoboom** sales team
- France's **Kiloutou** has launched an online used equipment platform
- Heinz Helmut Kempkes** of Germany's **Kuli Hebezeuge** has died
- Hyva Germany** has appointed **Olav Berkelmans** as MD
- China's **CCSE** has taken two **Potain MCH 175** hydraulic tower cranes
- CMC Germany** has appointed **Herbert Hager** as dealer for Austria
- Germany's **Gossner** has taken more **JCB** scissor lifts
- HDW** has celebrated 25 years as **Genie** distributor for Netherlands
- UK's **Roadcraft Crane Hire** has taken a 200t **Grove GMK5200-1 All Terrain**
- Graham Osmond** has joined **The Hire Exchange**
- Maxbr** has taken Spain's first 46ft **Genie GS-4655**
- Manitex** has appointed **Atlantic & Southern Equipment** in Georgia and **Keystone Crane Services** in Texas
- Argentina's **Euroamerica** has taken the first remotely assembled **Liebherr LHM 420** mobile harbour crane
- Belgium's **Wim Verhuur** has purchased two **Nagano S15AUJ** booms from **Vertimac**
- US based **CraneWorks** has appointed **Kenny Bishop** as president
- Norway's **Roar Wilhelmsen** has taken two **HSC** crawler cranes
- Haulotte Germany** has appointed **FSN Fördertechnik** as a dealer
- The **NCCCO Foundation** has published **'The Most Similar Certifications Directory'**
- Germany's **Weiland Kran & Transport** has taken a 70t **Tadano ATF 70G-4 All Terrain**
- UK's **Media Access Solutions** has opened a depot in Shepperton
- China's **SPT Cranes** has appointed **Jones Equipment Sales** as distributor for Australia
- Manitex** has launched the 41t **C450U** utility crane
- Oil & Steel** has appointed **Hird** as UK distributor
- IPAF** has appointed **Brian Parker** head of safety & technical
- Luis Aguilar** of Spain's **Grúas Aguilar** has died
- Réunion's **Incana** has taken a 500t **Demag AC 500-8 All Terrain**
- Mobile Mini UK** has taken five **Fassi F820** loader cranes
- Italy's **Giffi Noleggi** has taken five **Comet Eurosky 14** platforms
- APH Cranes** has taken a 230t **Liebherr LTM 1230-5.1**
- Crane Norway Group** has taken nine **Grove All Terrains**
- Netherlands **TVH Americas** has appointed **Jeannette Robinson**, **Martin Fajardo** and **Erika Fitzgerald** to its sales team



José Miguel Peña



Julie Houston Smyth



Graham Osmond



Kenny Bishop



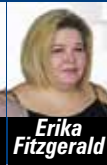
Brian Parker



Martin Fajardo



Jeannette Robinson



Erika Fitzgerald

- Heeren Groep** has taken a 220t **Demag AC 220-5 All Terrain**
- WernerCo** has promoted **Steve Lock** to head of R&D/quality
- Switzerland's **Malerei Blaser** has taken two **Hinowa** spider lifts
- UK's **Ainscough Crane Hire** has taken a **Liebherr MK 88-4.1** mobile self-erecting tower crane
- Austria's **Maltech** has taken an all-electric **Klubb K20** van mounted platform
- Wagenborg Nedlift** has purchased a 450t **Liebherr LTM1450-8.1** and 700t **LTM1650-8.1**
- Finland's **Dinolift** has appointed **Ahern Ibérica** distributor for Spain and Portugal
- UK's **JT Dove** has taken seven **Hiab X HiDuo** loader cranes
- UK's **Walkers of Tuxford** has taken a second **Grove GMK4100L-1**
- UK's **Access Hire Nationwide** has purchased 25 **Versalift VTL135-F** van mounts
- UK's **Eastern Crane Hire** has taken a 60t **Liebherr LTM 1060-3.1**
- Liebherr USA** has appointed **Beau Pocock** as business manager RT cranes
- UK's **Clearview Access** has taken a 90m **Ruthmann T900 HF**
- Terex** has appointed **Select Plant Hire** as tower crane dealer for Ireland
- Tadano Demag UK** has appointed **Paul Duke** as customer support manager
- Denmark's **JM Trykluft** has taken the first 46ft **JLG 460SJ HC3** boom lifts
- UK's **DSM Contract Lifting** has taken a 6t **Böcker AK 46/6000** truck crane
- Germany's **Heims Holzbau** has taken three **Liebherr L1-32** self-erectors
- Ireland's **GK Hire** has taken 21 **Genie GS-1330m** scissor lifts
- Brad Boehler** has joined **Morbark** as president
- Adam's Euro** has taken the first **Magni RTH 6.51** telehandler
- LGMG** has teamed up with Dutch software company **AMS** to provide telematics
- Germany's **Waldschütz** has taken a 70t **Tadano ATF 70G-4 All Terrain**
- Switzerland's **Maltech** has taken its 100th **Bronto Skylift** platform
- UK's **Bennetts Cranes** has taken a **Kobelco CKE900G-3** crawler crane
- US based **Dennis Tree Service** has taken a **Demag AC60-3**
- UK's **Midland Access Platforms** has taken a 46ft **Genie GS-4655** scissor
- UK's **Berry Cranes** has taken a 60t **Liebherr LTM 1060-3.1**
- Sonoforte** has taken the first **Tadano AT** in Mongolia
- Haulotte** has appointed Morocco's **Groupe Premium** as distributor for 12 African countries
- Oil & Steel** has appointed **SNM Lift** as its distributor for north west France.
- UK's **Coppard Plant Hire** has taken a 6t **Klaas K1003RSX** truck crane
- UK's **Crowland Cranes** has taken a third 60t **Liebherr LTM 1060-3.1**
- UK's **Mtec** has taken a 43 t/m **PM** loader crane on Mercedes truck
- JLG Europe** has appointed **Marko Kuipers** as director operations and **Tjitske van Hellemond** as director customer care



Steve Lock



Beau Pocock



Paul Duke



Brad Boehler



Marko Kuipers



Tjitske van Hellemond

See www.vertikal.net news archive for full versions of all these stories



AC 300-6

Above and beyond.

Take your business to the next level with the Demag AC 300-6. It delivers class-leading reach combined with strength, including the ability to lift 15 t on a fully telescoped 80 m boom. To allow for high versatility, the AC 300-6 can be adapted to the needs of a variety of jobs and is the smallest crane in the Demag AC range with a luffing jib. The HAV and many components are shared with Demag 5-axle cranes – increasing your return on investment and reducing the amount of spare parts you need to have on hand.

Above. Ahead. Always.

DEMAG
TADANO GROUP