

Are your staff properly trained?

Don't risk it call a certified local company today

North



Wakefield

Tel: 01924 383833 • Fax: 01924 383832

Email: info@upliftplatforms.co.uk

www.upliftplatforms.co.uk

North East



Hull

Tel: 01482 227333 • Fax: 01482 587710

Email: enquiries@peter-hird.co.uk

www.peter-hird.co.uk

National



Tel: 08707 787 1511

Email: info@afi-platforms.co.uk

www.afi-platforms.co.uk

National



Tel: 0845 601 1032 • Fax: 0116 286 9038

Email: training@nationwideaccess.co.uk

www.nationwideaccess.co.uk

England & Wales



Tel: 01793 766744

Email: ken@hi-reach.co.uk

www.hi-reach.co.uk

National



Tel: 0845 06 11 999 Fax: 01582 842590

Email: simon@panther.uk.com

www.platform-rentals.co.uk

National



Tel: +44 (0) 1291 421155 • Fax: +44 (0) 1291 423236

Mike Fen Mobile: +44 (0) 7980 764021

Email: training@accessplatforms.com

www.accessplatforms.com

National



instant training

Tel: 0845 068 4594 • Fax: 0845 815758

Email: info@instant-training.com

www.instant-training.com

Scotland



active in training

Tel: 0845 27 ACTIVE(228483) • Fax: 01698 281 735

Email: andrewmccusker@activesafetytraining.co.uk

www.activerentals.co.uk

National



Freephone: 0800 0 28 18 00

Unit 22/23, Progress Business Park, Whittle Parkway,
Slough, Berkshire. SL1 6DQ.

www.platformcompany.co.uk

All training centres above offer IPAF approved and audited courses for Operators of Mobile aerial work platforms, European directives require that all staff are fully and adequately trained in the safe use of the equipment they operate. See www.ipaf.org for full listing

Whats on?

World of Concrete 2005

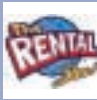
18-21 January, 2005
Las Vegas, US
Tel: [1] 972 536 6300
Fax: [1] 972 536 6402
e-mail:
info@worldofconcrete.com

The Hire Show 2005

UK rental industry conference and exhibition
26-27 January, 2005
ExCel exhibition centre
London, UK
Tel: [44] (0) 20838 71244
Fax: [44] (0) 84512 76113
e-mail:
thehireshow@btopenworld.com

ARA RentalShow 2005

Premier US rental show
14 - 17 February, 2005
Mandalay Bay
Convention Center
Las Vegas US
Tel: [1] 800 334 2177
Fax: [1] 309 764 1533
www.therentalshow.com



World of Concrete 2005

18-21 January, 2005
Las Vegas, US
Tel: [1] 972 536 6300
Fax: [1] 972 536 6402
e-mail: info@worldofconcrete.com

The Hire Show 2005

UK rental industry conference and exhibition
26-27 January, 2005
ExCel exhibition centre
London, UK
Tel: [44] (0) 20838 71244
Fax: [44] (0) 84512 76113
e-mail:
thehireshow@btopenworld.com



Samoter 2005

International Triennial
Earth-moving and Building
Machinery Exhibition
5-8 May, 2005
Veronfiere
Verona, Italy
Tel: [39] 045 8298 111
Fax: [39] 045 8298 288
e-mail: info@samoter.com

Conexpo-Con/Agg 2005

The leading US
construction trade show
15-19 March, 2005
Las Vegas, Nevada, US
Tel: [1] 414-298-4133
Fax: [1] 414-272-2672
e-mail:
international@conexpoconagg.com

SED 2005

UK Site Equipment
Demonstration
17 - 19 May, 2005
Fen Farm, Wavendon,
Milton Keynes, UK
Tel: [44] (0) 208 652 4810
Fax: [44] (0) 208 652 4804
www.sed.co.uk

Apex 2005

International powered
access fair
22-24 September, 2005
Maastricht, The Netherlands
Tel: [31] (0) 547 271 566
Fax: [31] (0)547 261 238
e-mail: Joyce@ipi-bv.nl

CeMAT 2005

October 11-15, 2005
Hannover, Germany
Tel: [49] 511 89 31130
Fax: [49] 511 89 32654
e-mail: cemat@messe.de



Intermat 2006

International construction
equipment show
24 - 29 April, 2006
Paris-Nord Exhibition Centre
Paris, France
Tel: [33] 1 4968 5248
Fax: [33] 1 4968 5475
e-mail info@intermat.fr

Visit www.Vertikal.net/en/events for a full listing of events with direct links to the organisers.

ADVERTISEMENT



M. Stemick GmbH
Kran- u. Baumaschinenhandel



AN- U. VERKAUF VON GEBRAUCHTKRANE
WIR BIETEN AN:

ALL TERRAIN-CRANES

| | | | |
|---------------------------|----------|---------|-----------------|
| 25 t Liebherr LTM 1025, | Bj. 1990 | 4x4x2 | 26,00m + 8,20m |
| 25 t Liebherr LTM 1025, | Bj. 1990 | 4x4x4 | 26,00m + 8,20m |
| 30 t PPM ATT 350/2, | Bj. 2000 | 4x4x4 | 30,40m |
| 35 t PPM 380 ATT, | Bj. 1989 | 4x4x4 | 30,40m + 7,50m |
| 35 t P & H S 35, | Bj. 1986 | 4x4x4 | 25,90m + 8,00m |
| 35 t P & H S 35, | Bj. 1989 | 4x4x4 | 25,90m + 13,00m |
| 35 t PPM ATT 400/3, | Bj. 2001 | 4x4x4 | 30,40m + 15,00m |
| 35 t Liebherr LTM 1035-3, | Bj. 1989 | 6x4x6 | 26,00m + 8,30m |
| 40 t Demag AC 40-1, | Bj. 1999 | 6x4x6 | 31,20m + 13,00m |
| 45 t Faun ATF 45-3, | Bj. 2003 | 6x6x6 | 34,00m + 15,20m |
| 50 t Faun ATF 50-3, | Bj. 1995 | 6x6x6 | 38,50m + 16,00m |
| 50 t Demag AC 155, | Bj. 1993 | 6x4x6 | 40,00m + 17,60m |
| 50 t Demag AC 155, | Bj. 1997 | 6x6x6 | 40,00m + 17,60m |
| 50 t Grove GMK 3050, | Bj. 1998 | 6x4x6 | 38,50m + 15,00m |
| 70 t Liebherr LTM 1070/1, | Bj. 1995 | 8x6x8 | 40,00m + 15,80m |
| 70 t Liebherr LTM 1070, | Bj. 1992 | 8x8x8 | 42,00m + 18,00m |
| 80 t Faun ATF 80-4, | Bj. 2001 | 8x6x8 | 48,50m + 16,00m |
| 80 t Krupp KMK 4080, | Bj. 1994 | 8x6x8 | 43,00m + 13,00m |
| 90 t Liebherr LTM 1090, | Bj. 1991 | 10x8x10 | 45,00m + 20,00m |
| 100 t Grove AT 1100, | Bj. 1992 | 10x8x8 | 39,50m + 31,00m |

TELESCOPIC TRUCK-CRANES

| | | | |
|------------------------|----------|--------|-----------------|
| 25 t Liebherr LT 1025, | Bj. 1978 | 6x4x2 | 24,00m + 9,00m |
| 80 t Liebherr LT 1080, | Bj. 1979 | 12x6x8 | 40,00m + 12,50m |

ROUGH-TERRAIN CRANES

| | | | |
|-----------------------|----------|-------|----------------|
| 35 t Pinguely TT 386, | Bj. 1997 | 4x4x4 | 31,00m + 9,00m |
|-----------------------|----------|-------|----------------|

Weitere Krane auf Anfrage

M. Stemick GmbH
Kran- u. Baumaschinenhandel
Import - Export
D-45721 Haltern / Germany

Tel.: +49-2364 - 108203
Fax: +49-2364 - 15546
Mobile: +49-172-2332923
E-Mail: info@stemick-krane.de
Internet: <http://www.stemick-krane.de>

Import • Export

Marketplace

USED EQUIPMENT • SPARE PARTS • RECRUITMENT • RECONDITIONING • HIRE • WANTED

cranes & access

FOR UK USERS & BUYERS OF LIFTING EQUIPMENT

reaches over six times as many
UK/Irish buyers of lifts and lifting
equipment than any other lifting
magazine

ADVERTISING:

New England House/Level 5
New England Street,
Brighton BN1 4GH, UK
Tel: +44 (0)1273 884422
Fax: +44 (0)1273 884477
E-mail: info@vertikal.net

Vertikal
.net



Riwal Hoogwerkers b.v. Tel. +3178 618 18 88

Maxwellstraat 27
NL-3316 GP Dordrecht

Fax. +3178 618 18 66
E-mail: info@riwal.com

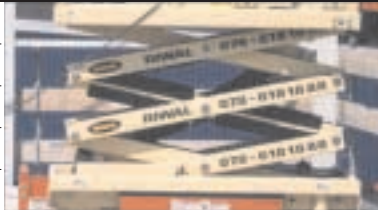
The Netherlands
Denmark

EX-RENTALS FOR SALE

From our rental fleet of some 3,500 units we are currently offering the following:
Ready to work platforms from renowned manufacturers. We are only 20 minutes from Rotterdam Airport.
Delivery to UK/Ireland easily arranged.

ELECTRIC SCISSORLIFTS

| Brand/model | Year | Qty. | Description |
|--------------|------|------|------------------------------------|
| JLG 2046E/58 | 1998 | 6 | non marking tires, fold down rails |
| JLG 2646 | 1999 | 9 | non marking tires, fold down rails |
| HL 105EL12 | 1998 | 5 | non marking tires |
| HL 135EL18 | 1996 | 5 | non marking tires |



ROUGH TERRAIN SCISSOR LIFTS

| Brand/model | Year | Qty. | Description |
|-------------|-------|------|---------------------------------------|
| JLG 33RTS | 1998 | 3 | 4x4, osc.axle, jacks, wide tires |
| JLG 40RTS | 96/98 | 2+2 | 4x4, osc.axle, jacks, wide tires |
| JLG 500RTS | 1996 | 3 | 4x4x4, osc.axle, jacks, wide tires,dd |



TELESCOPIC BOOM LIFTS

| Brand/model | Year | Qty. | Description |
|-------------|----------|--------|----------------------------|
| JLG 600SJ | 96/98/99 | 1+2+3 | oscillating axle, jib |
| JLG 660SJ | 97/98/99 | 1+2+11 | 4x4, oscillating axle, jib |
| JLG 80HX+6 | 1999 | 2 | 4x4, oscillating axle, jib |



ARTICULATING BOOM LIFTS

| Brand/model | Year | Qty. | Description |
|-------------|-------|------|-----------------------|
| JLG 600A | 97/98 | 5 | 4x4, oscillating axle |
| Orion 1000 | 1998 | 2 | mast boom |
| Toucan 1100 | 94/95 | 3 | mast boom |
| JLG 20VP | 1997 | 3 | personnel lift |



MISCELLANEOUS

| Brand/model | Year | Qty. | Description |
|-------------|-------|------|---------------------------|
| AICH SR123 | 98/99 | 1+2 | crawler mounted boom lift |
| AICHI SR182 | 97/98 | 2+17 | crawler mounted boom lift |
| AICHI SR210 | 97/98 | 2+3 | crawler mounted boom lift |



Each machine is fully inspected and ready for use



Access & Lifting directory - Go straight to these sites!

ACCESS EQUIPMENT MANUFACTURERS

| | |
|----------------|--|
| Aichi | www.aichi.de |
| Alimak | www.alimak.co.uk |
| Barin | www.barin.it |
| Basket | www.basket-platforms.com |
| Bison Stematec | www.bison-stematec.de |
| Denka Lift | www.denka.dk |
| Dino Lift | www.dinolift.com |
| Genie | www.genielift.com |
| GSR Spa | www.gsrspa.it |
| Haulotte | www.haulotte.com |
| Holland Lift | www.hollandlift.com |
| Iteco | www.itecolift.it |
| Leguan Lifts | www.leguanlifts.com |
| Manlift | www.manliftequipment.com |
| MEC | www.mec-awp.com |
| Safi | www.safi.it |
| Skyhigh | www.skyhigh.be |
| Snorkel | www.snorkelusa.com |
| Teupen | www.teupen.info |
| Upright | www.uprighteuro.com |

NEW & USED PLATFORMS

| | |
|----------------------------|--|
| A.J.Access Platforms | www.accessplatforms.com |
| Access Sales International | www.accesssalesint.co.uk |
| Baulift | www.baulift.de |
| Easi-uplifts | www.easiuplifts.com |
| Flesch | www.Flesch-Arbeitsbuehnen.de |
| Nationwide Access | www.nationwideaccess.co.uk |
| Peter-Hird Ltd | www.peter-hird.co.uk |
| PASS | www.poweredaccess.com |
| Promax Access | www.promaxaccess.com |
| Ritchie Bros auctions | www.rbauction.com |
| Riwal | www.riwal.com |
| Skyreach Access | www.skyreachaccess.com |
| Take Over Platforms | www.takeoverplatforms.com |
| Thanner | www.USED-Worklift.com |

PLATFORM RENTAL

| | |
|-------------------|--|
| Easi up Lifts | www.easiuplifts.com |
| Hi-reach | www.hi-reach.co.uk |
| Nationwide Access | www.nationwideaccess.co.uk |
| Riwal | www.riwal.com |

TRAINING CENTRES

| | |
|---------------------------|--|
| Active Safety | www.activerentals.co.uk |
| AFI | www.afi-platforms.co.uk |
| Ainscough | www.ainscoughtraining.co.uk |
| AJ Access | www.accessplatforms.com |
| Avon Crane | www.avoncrane.co.uk |
| HCS | www.hydrauliccraneservices.co.uk |
| Hi-Reach | www.avoncrane.co.uk |
| Hiab | www.hiab.com |
| Instant Training | www.instant-training.com |
| L&B Transport | www.lbtransport.co.uk |
| Nationwide | www.nationwideaccess.co.uk |
| Norfolk Training Services | www.norfolktraining.co.uk |
| Peter Hird | www.peter-hird.co.uk |
| Plant Equipment | www.plantequip.co.uk |
| Platform Rentals | www.platform-rentals.co.uk |
| Skyreach access | www.skyreachaccess.com |
| Southern Crane & Access | www.southerncranes.co.uk |
| TH White | www.thwhite.co.uk |
| Terex Atlas (UK) Ltd. | www.atlascranes.co.uk |
| The Platform Company | www.platformcompany.co.uk |
| Uplift platforms | www.upliftplatforms.co.uk |

TRAINING ASSOCIATIONS AND NETWORKS

| | |
|-------|--|
| Allmi | www.allmitraining.co.uk |
| AWPT | www.awpt.org |
| IPAF | www.ipaf.org |

CRANE MANUFACTURERS

| | |
|---------------------|--|
| Demag Mobile Cranes | www.terex-cranes.com |
| Tadano Faun | www.tadanofaun.de |
| Terex-Demag | www.terex-cranes.com |
| Unic Cranes | www.unic-cranes.co.uk |
| Valla | www.valla-cranes.co.uk |
| Vanson | www.vansoncranes.com |

NEW & USED CRANES

| | |
|------------------|--|
| Kobelco | www.kobelco.nl |
| Kunze | www.KUNZEgmbh.de |
| M. Stemick | www.stemick-krane.de |
| P.V. Adrighem BV | www.adrighem.com |
| Terex Demag | www.terex-cranes.com |
| Thanner | www.USED-Worklift.com |
| Used Cranes CCK | www.used-cranes.de |
| Valla UK Ltd | www.valla-cranes.co.uk |
| Verschoor | www.verschoor-cranes.com |
| Waterland | www.waterland-trading.nl |

CRANE HIRE

| | |
|-----------|--|
| Ainscough | www.ainscough.co.uk |
| Hewden | www.hewden.co.uk |

LORRY/TRUCK LOADER CRANES

| | |
|-----------|--|
| Palfinger | www.palfinger.com |
|-----------|--|

TELESCOPIC HANDLERS

| | |
|-------|--|
| Dieci | www.dieci.com |
| Merlo | www.merlo.co.uk |

EQUIPMENT & ACCESSORIES

| | |
|--------------------------|--|
| Compwise | www.compwise-rugged.com |
| Follow it | www.followit.co.uk |
| Kinshofer | www.kinshofer.com |
| Mydeck Loading Platforms | www.vansoncranes.com |
| Neuhaus Air Hoists | www.idn.de |
| Nylatron smooth as silk | www.quadrantplastics.com |
| On line web slings | www.lifting-slings.com |
| Palfinger | www.palfinger.com |
| Schuler & Schloemmer | www.schuler-schloemmer.ch |
| Strainstall | www.strainstall.com |

PARTS AND SERVICE SUPPLIERS

| | |
|-----|--|
| IPS | www.independent-parts-service.com |
|-----|--|

STRUCTURAL REPAIRS

| | |
|----------------|--|
| Avezaat Cranes | www.avezaat.com |
|----------------|--|

Industry Associations

| | |
|-------|--|
| ALLMI | www.allmitraining.co.uk |
| IPAF | www.ipaf.org |
| OSHA | www.osha.gov |

WIRE ROPE

| | |
|--------------|--|
| Bridon Ropes | www.bridon.com/cranerope |
| Casar | www.casar.de |

BATTERY SUPPLIERS

| | |
|----------------|--|
| Trojan Battery | www.trojanbattery.com |
|----------------|--|

CONTROL SYSTEMS

| | |
|--------------|--|
| Intercontrol | www.intercontrol.de |
|--------------|--|

Exhibitions

| | |
|------------------------|--|
| CONEXPO | www.conexpoconagg.com |
| PLATFORMER DAYS | www.platformers-days.de |
| SED | www.sed.co.uk |
| WORLD of CONCRETE 2005 | www.worldofconcrete.com |

CRANE ENTHUSIASTS SITES

| | |
|-------------------------|--|
| Crane Gear | www.cranegear.com |
| German Crane Model Site | www.igfbsk.de |
| Lifting World | www.lifting-world.co.uk |

ALLOY TOWERS

| | |
|-----------------|--|
| Instant | www.upright.com |
| Skyreach Access | www.skyreachaccess.com |
| Svelt | www.svelt.it |

WWW.EASIUPLIFTS.COM



**All Machines sold direct from our fleet
All Machines sold serviced and certified
Door to Door Delivery Available**



Genie Z34/22 – 2WD

articulated boom. Battery powered. 40ft work height (12m). Choice
1999 - £10,000 (€14,250)
2000 - £12,500 (€18,000)



Genie S80 – 2WD

telescopic boom. Cummins diesel. 86ft work height (26.2m) Excellent condition, low hours. Choice
1999 - £28,000 (€40,000)



Grove MZ46cxt – 4WD

telescopic boom. Hatz diesel. 46ft work height (14m) Choice
1999 - £13,000 (€18,500)



MZ116

telescopic boom. Cummins diesel. 116ft work height. (35.3m) Choice
1999 - £45,000 (€64,500)
2000 - £50,000 (€71,500)

Genie Z45/25 BI – 2wd articulated boom.

Battery and Kubota diesel. 51ft work height (15.5m).
1999 - £16,000 (€23,000)
2000 - £18,000 (€25,750)
2002 - £22,000 (€31,500)

Genie Z45/25 RT – 4WD articulated boom.

Battery and Kubota diesel. 51ft work height (15.5m).
2002 - £22,000 (€1,500)

Genie Z60/34 – 4WD articulated boom.

Deutz diesel. 66ft work height (20.1m). Choice.
2003– POA

Genie Z80/60 – 4WD articulated boom.

Deutz diesel. 86ft work height (26.2m) Choice.
2003 - POA

Genie S60 – 4WD telescopic boom.

Cummins diesel. 66ft work height (20.1m) Choice.
1999 - £ 24,000 (€ 34,500)

Genie S65 – 4WD telescopic boom.

Cummins diesel. 71ft work height (21.6m) Choice.
1999 - £ 26,000 (€37,500)
2001 - £ 34,000 (€48,500)

Genie S85 – 4WD telescopic boom.

Cummins diesel. 91ft work height (27.7m) Choice.
1999 - £34,000 (€48,500)
2002 – POA

Genie S125 – 4WD telescopic boom.

Cummins diesel. 131ft work height (40m) Choice.
2002 – POA

Grove MZ46c – 2WD telescopic boom.

Hatz diesel. 46ft work height (14m) Choice.
1998 - £11,000 (€15,750)

Grove MZ66b – 2wd telescopic boom.

66ft work height (20.1m). Hatz diesel. Choice.
1997 - £10,000 (€14,250)

Grove MZ66c – 2wd telescopic boom.

66ft work height (20.1m). Hatz diesel. Choice.
1996 - £10,000 (€14,250)
1997 - £11,000 (€15,750)

Grove MZ66dxt – 4WD telescopic boom.

Deutz diesel. 66ft work height (20.1m) Choice.
1999 - £19,000 (€27,250)

Grove AMZ68xt – 4WD articulated boom.

Deutz diesel. 68ft work height (20.3m) Choice.
1998 - £18,000 (€25,750)

Grove AMZ86xt – 4WD articulated boom.

Cummins diesel. 86ft work height (26.2m) Choice.
1997 - £25,000 (€35,750)

JLG 120HX – 4WD telescopic boom.

126ft work height (39m). Deutz diesel. Choice.
1999 - £45,000 (€64,500)



• USED EQUIPMENT • SPARE PARTS • RECONDITIONING • HIRE • WANTED •

WWW.EASIUPLIFTS.COM



Skyjack 7027 – 4wd

Kubota diesel scissors.
33ft work height.
Deck extension.
Choice.
1996 - £ 5,000 (€7,250)
1998 - £ 8,500 (€12,000)
1999 - £ 9,750 (€14,000)



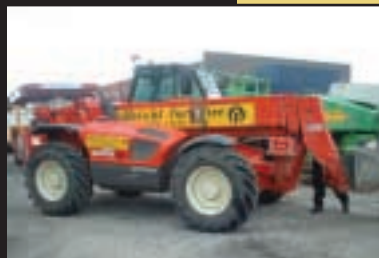
Falck Schmidt FS290

Specialised indoor access machine. 90ft.
Multi-Fuel power.
2002 - POA



Manitou BT420 – 4wd

Perkins diesel teleporter.
4m work height,
2 tonnes max lift.
Choice.
2000 - £ 15,500 (€22,000)
2001 - POA
2002 - POA



Manitou MT1233

4wd Perkins diesel teleporter. 12m work height, 3.3 tonnes max lift.
Jacks
2000 - £ 19,950 (€29,000)
2001 - POA
2002 - POA



Skyjack SJ9250

4wd Kubota diesel scissors.
56ft (17m) work height.
Hydraulic outriggers.
Choice
1998 - £ 13,500 (€19,950)
1999 - £ 17,750 (€26,000)

Denka DL28 – Trailer mounted hoist.

Donkey diesel. Hyd. Outriggers,
90ft work height (28m). Choice.
1999 - £27,500 (€39,250)

Denka DL22 – Specialised narrow access hoist.

Hydraulic jacks. 72ft (22m) work height.
Battery powered. Choice.
2000 - £29,500 - (€42,000)

Scanlift SL185 – All terrain hoist.

4WD, Crab steer. 60ft work height (18.5m).
Kubota diesel. Hyd. Outriggers. Choice.
1999 - £15,000 (€21,500)
2000 - £19,500 (€28,000)

Scanlift SL240 - All terrain hoist.

4WD, Crab steer. 78ft work height (24m).
Kubota diesel. Hyd. Outriggers. Choice.
2000 - £27,000 (€38,500)
2001 - £29,000 (€41,500)

Nifty 170 – Trailer mounted hoist.

Kubota diesel and battery.
56ft work height (17m) Hyd. Outriggers. Choice.
1997 - £9,000 (€13,000)
1998 - £10,000 (€14,250)

Upright AB38 – 2wd articulated battery boom.

44ft work height. Choice.
2001- £11,000 (€15,750)

Upright XRT33 – 4wd diesel scissors.

39ft work height (12m) Deck extension. Choice.
2000 - £9,000 (€13,000)

Skyjack 4626 – 2wd battery scissors.

32ft work height. Deck extension. Choice.
1999 - £5,000 - (€7,250)

Skyjack 7027 – 4wd Kubota diesel scissors.

33ft work height. Deck extension. Choice.
1996 - £5,000 (€8,000)
1998 - £8,250 (€12,000)
1999 - £9,500 (€14,000)

Skyjack SJ8841 – 4wd Kubota diesel scissors.

46ft work height. Deck extensions. Choice.
1998 - £12,500 (€18,000)
1999 - £14,000 (€21,000)

Skyjack SJ9250 – 4wd Kubota diesel scissors.


56ft (17m) work height. Hydraulic outriggers.
1998 - £13,500 (€19,950)
1999 - £17,750 (€26,000)



Contact: Ronan MacLennan

Dublin: 00-353(0)1 835 2835 Limerick: 00-353(0) 61 330 233

Belfast: 028 908 33573 Glasgow: 01698 308899



HOMAR B.V.

Import-export hydraulic and lattice boom cranes

Homar B.V.
 Marconweg 12
 8271 AS Amstelveen
 The Netherlands

Tel: +31-343-23392
 Fax: +31-343-23429
 E-mail: info@homar.nl
 Internet: www.homar.nl

Telescopic AT-Cranes

| capacity | manufacturer | type | year | drive/steering | boom/jib (m) | delivery |
|----------|--------------|---------------|------|----------------|--------------|-----------|
| 90 t | Liebherr | LTM 1090 | 1991 | 10 x 8 x 10 | 45 / 20 | direct |
| 80 t | Krupp | KMK 4080 | 1994 | 8 x 6 x 8 | 43 / 13 | direct |
| 70 t | Liebherr | LTM 1070/1 | 1995 | 8 x 6 x 8 | 40 / 15,8 | direct |
| 70 t | Liebherr | LTM 1070 | 1992 | 8 x 6 x 8 | 42 / 18 | direct |
| 70 t | Krupp | KMK 4070 | 1991 | 8 x 6 x 8 | 38 / 16 | Dec. 2004 |
| 70 t | Krupp | KMK 4070 | 1990 | 8 x 6 x 8 | 38 / 16 | direct |
| 70 t | Krupp | 70 GMT AT | 1988 | 8 x 6 x 8 | 37 / 16 | direct |
| 60 t | Krupp | KMK 4060 | 1989 | 8 x 6 x 8 | 35 / 16 | direct |
| 55 t | Demag | AC 125 | 1987 | 6 x 6 x 6 | 30 / 14,5 | Dec. 2004 |
| 50 t | Demag | AC 155 | 1997 | 6 x 6 x 6 | 40 / 17,6 | direct |
| 50 t | Demag | AC 155 | 1993 | 6 x 6 x 6 | 40 / 17,6 | direct |
| 50 t | Faun | ATF 50-3 | 1995 | 6 x 6 x 6 | 38,6 / 16 | direct |
| 45 t | Krupp | KMK 3045 (3x) | 1990 | 6 x 4 x 6 | 32 / 13 | direct |
| 40 t | Demag | AC 40-1 | 1999 | 6 x 4 x 6 | 31 / 13 | direct |
| 40 t | Liebherr | LTM 1035-3 | 1989 | 6 x 4 x 6 | 30 / 8,3 | direct |
| 35 t | PPM | 400/3 ATT | 2001 | 4 x 4 x 4 | 30,4 / 15 | direct |
| 35 t | PPM | 380 ATT | 1989 | 4 x 4 x 4 | 30,4 / 7,5 | direct |
| 35 t | PPM | 380 ATT | 1986 | 4 x 4 x 4 | 30,4 / 7,5 | direct |
| 35 t | P&H | S 35 | 1989 | 4 x 4 x 4 | 25,9 / 13 | direct |
| 35 t | P&H | S 35 | 1986 | 4 x 4 x 4 | 25,9 / 8 | direct |
| 35 t | Krupp | 35 GMT | 1986 | 4 x 4 x 4 | 26 / 8 | Dec. 2004 |
| 35 t | Krupp | 35 GMT AT | 1985 | 4 x 4 x 4 | 26 / 1 | direct |
| 25 t | Liebherr | LTM 1025 | 1990 | 4 x 4 x 4 | 26 / 8,2 | direct |
| 25 t | Liebherr | LTM 1025 | 1990 | 4 x 4 x 2 | 26 / 8,2 | direct |
| 25 t | Krupp | KMK 2025 | 1994 | 4 x 4 x 4 | 23 / 13 | direct |
| 25 t | Krupp | KMK 2025 (4x) | 1992 | 4 x 4 x 4 | 23 / 13 | direct |
| 25 t | Krupp | 25 GMT AT | 1987 | 4 x 4 x 4 | 23 / 9 | direct |
| 20 t | Krupp | KMK 2020 | 1990 | 4 x 4 x 4 | 20 | direct |

Rough-Terrain Cranes

| capacity | manufacturer | type | year | drive/steering | boom/jib (m) | delivery |
|----------|--------------|--------|------|----------------|--------------|----------|
| 35 t | Pinguely | TT 386 | 1979 | 4 x 4 x 4 | 31 / 9 | direct |

Telescopic Truck Cranes

| capacity | manufacturer | type | year | drive/steering | boom/jib (m) | delivery |
|----------|--------------|----------|------|----------------|--------------|----------|
| 60 t | Grove | TT 865 E | 1993 | 8 x 6 x 8 | 38 / 16 | direct |
| 50 t | Grove | TM 750 E | 1988 | 8 x 4 x 4 | 38 / 16 | direct |
| 50 t | Grove | TM 750 E | 1985 | 8 x 4 x 4 | 38 / 16 | direct |
| 25 t | PPM | C 280 | 1990 | 6 x 4 x 2 | 30 / 9 | direct |
| 25 t | PPM | C 280 | 1990 | 6 x 4 x 2 | 30 | direct |

Details and pictures on www.homar.nl



The TOP in used access platforms

- large stock
- third party certification
- ready for use

Contact Lex Trouwborst or visit our website
for the actual stock.

TOP

TakeOverPlatforms.com

Lex Trouwborst T +31 (0)180 412 827
 NL - P.O. Box 1000 F +31 (0)180 417 890
 2980 BA Ridderkerk M +31 (0)622 909 782



TOWER CRANES

NEW AND USED SALES FROM THE TRUE SPECIALISTS

PLEASE CONTACT US:
 Email: mtilux@aol.com

MTI-Lux S.A.
 2A Rue Prince Henri
 L-6735 Grevenmacher
 Tel: +352 26745480 Fax: +352 26745483


 Machine Trading
 International

www.used-cranes.de



Providing a simple solution to your access problem

www.skyreachaccess.com



SkyKing Equipment has become the industry leading manufacturer of Truck mounted Aerial Access Platforms with more than 1000 units now in service in the UK. The company is looking to strengthen its After Sales department with the following full time positions.

After Sales Manager

Management and co-ordination of Field Service Engineers and a team of administrators to effectively deliver service and support of parts to new and existing customers. The position is well suited to applicants who have a natural desire to delivering high levels of customer service along with a good understanding of hydraulic related engineering

Field Service Engineers

Experienced and high calibre engineers are required to carry out assessments and repairs to all makes of vehicle mounted access equipment. The position requires applicants to be trained up to IPAF standard, experience of vehicle electrics, which should include diagnostics and repairs and the ability to carry out LOLER testing.

For either position please send a copy of your CV to Adrian Salt at the address below. Closing date 21st January 2005

King Highway Products Ltd., Brunel Road, Earlstrees Industrial Estate, Corby, Northants, NN17 4JW
 Tel: 01536 403140 Fax: 01536 403203 Email: sales@skyking.co.uk Web: www.skyking.co.uk


Castellana work platforms

**Safe Practical
Economical
Solutions to
Temporary
Work at Height**

- All Aluminium
- Working Heights from 2.8m - 6m
- 670mm x 530mm Platform with Guardrail
- Folds for Compact Storage
- Rubber Wheels for Easy Movement
- Automatic Brakes
- Built in Handrails
- Lightweight
- Tool Tray
- 150kg Platform Capacity
- 5 Year Warranty



Available in the UK from

Rapid Racking Ltd.

Tel 01285 686868

Fax 01285 686968

Rapid Racking Ltd.
Kemble Business Park, Kemble,
Cirencester, Gloucestershire. GL7 6BQ.

customerservice@rapidracking.com
www.rapidracking.com



Additional Dealers Required

Svelt S.p.A. 24060 Bagnatica Loc. Cassinone (Bergamo) Italy.
Tel. +39 035 681663. Fax. +39 035 676321

www.svelt.it • email export@svelt.it

WWW.CRANESALES.NET

MORE THAN **80 CRANES IN STOCK** VARIOUS TYPES

We speak **English**

Tel: + 31 (0) 653 37 50 50

Wir sprechen **Deutsch**

Tel: + 31 (0) 653 37 50 50

Nous parlons **Francais**

Tel: + 31 (0) 653 20 53 71

Noi parliamo **Italiano**

Tel: + 31 (0) 653 20 53 71



Faun

Grove

Liebherr

Krupp

PPM

Manitowoc

Demag

Manitex

www.cranesales.net / www.verschoor-cranes.com

E-mail : info@verschoor-cranes.com

Office : **Tel** : +31 (0) 252 23 54 68

Fax : +31 (0) 252 23 18 74

We are located at only 10 min. from Amsterdam Airport, The Netherlands/Holland

A. J. ACCESS PLATFORMS LTD.

Suppliers of used Access Platforms



SELF PROPELLED TELESCOPIC PLATFORM
2002 GENIE Z45/22 4x4
15m. working height (46ft.).
Oscillating axle. Deutz Diesel. Choice of 5 machines.



SELF PROPELLED SCISSOR PLATFORM
1998 JLG 40RTS.
14m. working height (46ft.).
Deutz diesel. Choice of machines.



SELF PROPELLED SCISSOR PLATFORM
1999 JLG 33 RTS
12m. working height (39ft.). Deutz Diesel.
Choice of several machines.



SELF PROPELLED TELESCOPIC PLATFORM
1998 GENIE Z45/22
15m. working height (50ft.). Deutz Diesel
Choice of 20 machines.



3SELF PROPELLED TELESCOPIC PLATFORM
1998 GENIE Z45/22. Bi-fuel
15m. working height (50ft.). Kubota Diesel & D.C.
Battery Power. Choice of several machines.



SELF PROPELLED SCISSOR PLATFORMS
1998 JLG 2033E.
8m. working height (26ft.).
Battery/Electric. Choice of machines.



SELF PROPELLED TELESCOPIC PLATFORM
2000 JLG 450AJ
15m. working height (51ft.). Deutz Diesel.
Choice of several machines.



SELF PROPELLED TELESCOPIC PLATFORM
1998 JLG 45DC
15m. working height (50ft.) D.C. Battery Powered
Choice of several machines.

Tel +44 (0) 1291 421155 Fax +44 (0) 1291 423930

PILL WAY, SEVERN BRIDGE IND. ESTATE, CALDICOT, GWENT NP26 5PU UK

E-Mail: sales@accessplatforms.com



www.accessplatforms.com



Are your Machines looking Old and Tired? The Paint Dull and Faded?

There is a fast solution that can save you £££'s

When a machines paint work becomes faded and dull, it can take hundreds of pounds off of its resale value and if it is in your fleet it can dent your image and reputation.

Current options do not work or are very costly:-

- Cutting polish simply does not last and damages the paint surface
- A respray can cost thousands plus loss of earnings.

There is now an alternative!

DAKOTASHINE

Dakota shine treatment takes less than 24 hours and will restore both the colour and the original deep gloss finish and will last as long as the original paint. The four steps are quick, simple and require minimum skills.

1. Pressure wash
2. Clean with Dakota Prep
3. Apply any touch up required
4. Spray with clear Dakota Shine

Leave to harden overnight and your machine is ready to go back to work with a new lease of life! Dakota shine also revives the rubber, vinyl and plastic parts so no need to Mask.



BEFORE



CLEAN



SPRAY



AFTER



**APPLICATION CONTRACTORS/
FRANCHISEES WANTED**



**Tel: 01935 863377
Cell: 078999 23088**

**Email: shine@fpgl.net
www.dakotashine.com**

Future Products Group, Ltd. 169 West Coker Rd. Yeovil, Somerset England BA20 2HE

MORE SPACE MORE TIME MORE ADAPTABLE

and now

MORE choice of
mast climber
contractor

Introducing the A.C.T. MAST CLIMBER
from Universal Sky Platforms.

- Fast and efficient
- Self-contained
- Diesel powered
- Moulds to any building shape and size
- Variable speeds from 0-12.2m (39ft) per minute
- Loading Capacity 3630kg (8000lbs) mast



The sky's the limit!
The sky's the limit!
The sky's the limit!



Universal Sky Platforms Ltd - Sales • Full Contract Services

Tel: (020) 8885 4442 Fax: (020) 8885 5219 email: info@uspuk.com www.uspuk.com