



# GLADLY TAKE ON THE HARD WORK.

## THE NEW GR SERIES

When it's hard. When it's painful. When it's loud. The new GR series has it covered. Demonstrating impressive robustness and high performance, the new GR-700EX-4, GR-900EX-4 and GR-1000EX-4 rough-terrain cranes feature state-of-the-art technology to handle even the most demanding requirements. With efficient motors, the longest boom in its class (GR-1000EX-4), compact design and smart assistant systems, everything is on board for maximum success.

The GR series: maximum flexibility for your success.





# TOP 30 UK & IRELAND RENTAL COMPANIES SURVEY

Just when we thought we had escaped the impact of Covid 19, the world was hit by increasing interest rates, high inflation and huge fuel and energy price hikes. While in the UK a new prime minister with contradictory and potentially inflationary policies is not helping overall business confidence resulting in a steadily sinking value of Sterling.

Rental companies are now under real strain from the rising costs and shortage of skilled labour. Three UK crane rental companies - Quinto Crane & Plant, M&M Crane Hire and Whyte Crane Services - have already entered the liquidation phase in the past few months and they will certainly not be the last, given the perfect storm of global financial events. Graham Jones Cranes also appointed administrators earlier in the year but was able to restructure and continue, and signs of a final pick up in rental rates and utilisation bodes well for those who are not burdened with too much debt.

Fortunately, the access rental companies appear to be managing better, however many are struggling with the same issues - poor rental rates, increasing staff shortages, higher wage bills and rising costs. Some are doing reasonably well, in particular the larger general rental companies.

Several businesses are investing in fleet renewals and in some cases expansion, but manufacturer's lead times continue to grow so any new orders show an expression of confidence in the future.

## ACQUISITIONS

This past year has seen a multitude of acquisitions around the world. In the UK & Ireland it has been relatively quiet and those that have taken place have all been in the access and telehandler sector. Most notably is the ongoing growth of the Briggs Equipment group which owns Balloo Hire in Northern Ireland. Recently it acquired Galway-based GPT - one of Ireland's largest rental companies - but also added Scotland's Access Plus in May and Aerial Platform Hire in Ireland in February.

Another growing group is AER Rents which acquired Chippendale Plant - together with its full range of telehandlers along with a few trailer lifts - after acquiring Mainline the year before and adding it to its Mr Plant hire and Drogheda Hire operations.

Despite all the pressures, there are many companies that are growing at a good rate. The Aspire Group was recognised as one of the UK's fastest growing private companies in the Sunday Times 100 fastest growing private companies having increased sales from at least £240,000 to more than £5 million over four years trading. Aspire - 11th in the table - had an annual growth rate of 167.3 percent over the past three years. Last year in the Top 30 the company's fleet was almost 3,200 aerial lifts. This year it has not been so keen to disclose its figures - perhaps the current economic climate is taking its toll?

## METHODOLOGY

As in previous years, questionnaires were sent to every company that might qualify for any of the various categories or charts. Once again interactive online forms have been used however, whether it is a result of the challenges companies are facing it has been really tough to get a full suite of responses this year. It has taken a good deal of chasing by email and telephone to bring in the laggards while delaying publication. More companies than usual said they did not want to be included - possibly because numbers were down? This has meant that we have been obliged to estimate a few fleets. As usual, some companies under or over state their fleet size, we try and keep a watch for these, but some inevitably may make it through.



With the sheer volume of information received, there will almost certainly be the odd error or two, so please inform us of any inaccuracies and we will do our best to update the online and digital magazine versions.

## THANK YOU

Finally, a big thank you to all the companies that participated, especially those that supported our efforts as sponsors of what we hope will prove to be another useful and insightful report for our many readers.

TOP 30

CRANES

Rising costs, operator/driver shortages and long manufacturer lead times are all starting to have an effect on the crane rental companies - some of which must be thinking is it time to get out while they can. However, this not the whole story, others are managing to raise rates while staying incredibly busy and finding a renewed

enthusiasm for the industry.

Several UK mobile crane companies have closed their doors - Quinto, M&M and Whyte Crane Services - while others have reduced their fleets or sold off some of their big cranes to reduce debt, thanks to the excellent prices they are fetching. The net effect is a 15 percent drop in new crane investment, possibly a combination of the uncertain financial landscape and long lead times from manufacturers.

The majority of the tower crane fleets have remained fairly static dropping slightly as have crawler and spider cranes. An interesting year ahead!



TOP MOBILE CRANE COMPANIES

Company	Total	All Terrain / Trucks	Rough Terrain	Mobile Tower	Pick & Carry	Trailer cranes
Ainscough	391 ▼	381	0	10	0	0
King Lifting	128 ▲	124	0	2	2	0
City Lifting	77 ▲	48	0	22	6	1
Bryn Thomas Cranes	70 ▲	63	0	4	3	0
Sarens UK	67 ▲	60	1	3	1	0
Baldwins	57 ▼	56	0	1	0	0
Emerson Crane Hire	55 ▼	54	0	1	0	0
Bronzeshield	54 ▼	51	0	3	0	0
Marsh Plant	54 ▼	54	0	0	0	0
Sparrow Crane	50 —	49	0	1	0	0
Davies Crane Hire	49 ▼	45	0	2	2	0
Kavanagh Crane Hire	48 —	46	0	2	0	0
Southern Cranes & Access	46 ▲	42	0	3	1	0
ABA Cranes	43 ▲	40	0	1	2	0
Crowland Cranes	38 ▲	34	2	0	2	0
Dewsbury & Proud	38 ▲	36	0	0	2	0
John Sutch Cranes	36 ▼	34	0	2	0	0
East Cork Crane Hire	31 ▲	30	0	1	0	0
NMT Crane Hire	30 ▼	25	0	5	0	0
MacSalvors	30 ▼	30	0	0	0	0
Tusker Crane Hire	27 ▲	27	0	0	0	0
Bernard Hunter Mobile Cranes	23 ▼	20	0	3	0	0
PP Engineering	23 —	21	0	0	2	0
Cadman Cranes	21 ▲	17	0	0	4	0
Steve Foster Cranes	21 —	19	0	1	1	0
Bob Francis Crane Hire	18 —	0	0	0	0	0
Marsden Crane Services	18 ▼	15	0	0	3	0
County Lifting	17 —	12	1	0	4	0
Horizon Crane Hire	17 —	0	0	0	0	0
J. Hewitt Crane Hire	17 —	0	0	0	0	0
Windhoist Ltd	17 ▼	17	0	0	0	0
Thanet Crane Hire	16 —	16	0	0	0	0
APH Cranes	14 ▲	14	0	0	0	0
Cork Crane Hire	14 ▼	14	0	0	0	0
AB2000	12 ▼	12	0	0	0	0
Cramscene Limited	11 ▼	11	0	0	0	0
Frank Barnes Crane Hire	11 —	0	0	0	0	0
Stoddart Crane Hire	11 <small>NEW ENTRY</small>	11	0	0	0	0
Coppard Plant Hire	10 —	3	0	0	7	0

Fleet size in the past 12 months has: ▲ Increased ▼ Decreased — Remained the same

LARGEST MOBILE CRANES

Company	Cap.	Make & Model	# in Fleet
Mammoet	1,200	Liebherr LTM 11200-9.1	N/D
Sarens UK	1,200	Gottwald AK 680-3	1
Ainscough	800	Liebherr LTM1750-9.1	1
East Cork Crane Hire	800	Liebherr LTM1750-9.1	1
Osprey Heavy Lift	800	Liebherr LTM 1800D	1
Baldwins	750	Liebherr LG1750	N/D
King Lifting	750	Liebherr LG1750	1
windhoist ltd	750	Liebherr LG1750	2
Bernard Hunter Mobile Cranes	700	Liebherr LTM1650-8.1	1
Kavanagh Crane Hire	700	Liebherr LTM1650-8.1	1
Bronzeshield	500	Liebherr LTM 1500-8.1	1
Forsyth of Denny	500	Liebherr LTM 1500-8.1	2
City Lifting	450	Liebherr LTM1450-8.1	1
Cramscene	450	Grove GMK6450	1
Emerson Crane Hire	450	Liebherr LTM1450-8.1	1
John Sutch Cranes	450	Demag AC450-7	1
Tusker Crane hire	350	Terex AC350-6	1
NMT Crane Hire	300	Terex AC300-6	1
Bryn Thomas Cranes	300	Grove GMK6300L	2
Cork crane hire	300	Grove GMK6300L	1
Davies Crane Hire	300	Grove GMK6300L	1
Southern Cranes & Access	300	Liebherr LTM1300-6.2	1
Steve Foster Cranes	300	Grove GMK6300L	1
Wolffkran	300	Grove GMK6300L	1
Wm O'Brien	300	Liebherr LTM 1300-6.2	1
Stoddart Crane Hire	250	Grove GMK5250	1
APH Cranes	230	Liebherr LTM1230-5.1	1
Dewsbury & Proud	230	Liebherr LTM1230-5.1	1
Cadman Cranes	180	Liebherr LTM1160-5.2	1
ABA Cranes	160	Terex Explorer 5600	1



**TOP TOWER CRANE COMPANIES**

Company	Total	Rope Luffers	Hydraulic Luffers	"Normal Self Erectors"	Hammerhead /Flat Tops
Falcon Tower Crane Services	448 ▲	163	93	68	124
London Tower Crane	225 —	130	0	15	80
Wolffkran UK	220 —	131	0	0	89
Select Plant Hire	186 ▼	127	20	0	39
City Lifting	170 ▲	68	12	20	70
Mantis Cranes	146 ▲	0	3	107	36
Bennetts Cranes	110 —	35	60	0	15
Uperio UK	108 —	57	10	8	33
Ladybird Crane Hire	80 ▼	0	0	50	30
Trident Lifting Solutions	71 ▲	41	11	0	19
Lewis Tower Crane Services	61 ▲	7	5	13	36
Irish Crane & Lifting	60 —	1	0	0	59
Heathrow Cranes	55 ▼	35	8	0	12
Sparrow Crane	46 ▲	0	2	42	2



**LARGEST TOWER CRANE IN FLEET**

Company	Capacity	Model	# in Fleet
Select Plant Hire	66t	Terex CTL 1600-66	5
Falcon Tower Crane Services	64t	Jaso J780PA.64	5
City Lifting	50t	Comansa 21 LC 750	1
Wolffkran UK	50t	Wolff 8060.25	2
Trident Lifting Solutions	36t	Comansa LCL500	8
Bennetts Cranes	32t	Saez SL730	1
Radius	32t	Potain MR608	3
London Tower Crane	24t	Jost 416.24	5
Lewis Tower Crane Services	24t	Liebherr 357 HC-L	1
Heathrow Cranes	20t		1
Uperio UK	18t	Terex CTL 260	2
Irish Crane & Lifting	16t	Terex CTT 331	5
Mantis Cranes	12t	Saez TLS75	5
Sparrow Crane	6t	Liebherr 81K	4
Ladybird Crane Hire	5t	Potain MCT 88	18

# MAT & TIMBER SERVICES



- CRANE MATS**
- OUTRIGGER MATS**
- TEMPORARY ACCESS ROADS**
- RAMPS**

**For all types of cranes under any application - Nationwide and Overseas**



**TEL: +44 (0) 1264 811005**  
**FAX: +44 (0) 1264 810600**

**e-mail: [info@sarumhardwood.co.uk](mailto:info@sarumhardwood.co.uk)    web site: [www.sarumhardwood.co.uk](http://www.sarumhardwood.co.uk)**

**CRANE COMPANIES & INVESTMENT**

Company	Investment	# Bought	# Sold	Depots	Staff
AB2000	£2,000,000	2	2	3	350
ABA Cranes	£2,500,000	6	6	1	55
AGD Equipment	£1,060,000	0	0	1	80
APH Cranes	N/D	1	0	1	15
Ainscough Crane Hire	£20,000,000	10	20	28	850
Bennetts Cranes	£6,000,000	19	0	1	80
Bernard Hunter Mobile Cranes	£2,500,000	3	3	2	60
Berry Cranes	£500,000	2	1	1	17
Bryn Thomas Cranes	£4,200,000	7	5	5	108
Cadman Cranes	£1,000,000	2	1	3	92
City Lifting	£3,000,000	18	0	3	185
Delden Cranes	£9,000,000	0	0	1	21
Coppard Plant Hire	£1,500,000	0	0	5	100
Cork crane hire	N/D	4	1	3	40
County Lifting	£1,000,000	3	1	1	33
Cramscene	N/D	0	1	2	35
Crowland Cranes	N/D	4	4	3	65
Davies Crane Hire	£3,500,000	2	0	4	79
Dewsbury & Proud	£6,000,000	8	2	4	55
East Cork Crane Hire	€8,500,000	7	3	2	35
Emerson Crane Hire	£3,585,000	5	9	2	46
Falcon Tower Crane Services	£12,000,000	29	11	5	450
Forsyth of Denny	£3,500,000	4	6	2	60
GGR Group	£1,500,000	15	8	3	151
GH Johnson Crane Hire	£2,500,000	3	4	1	25
Heathrow Cranes	N/D	4	2	2	0
Hird	£296,000	0	0	3	100+
John Sutch Cranes	£1,800,000	0	0	2	96
John Taylor Crane Services	£320,000	0	0	1	12
Johnston Rigging (Fife)	£100,000	0	0	1	19
Kavanagh Crane Hire	€6,000,000	0	0	4	95
King Lifting	£8,000,000	12	10	8	286
Ladybird Crane Hire	£750,000	8	3	1	23
Lewis Tower Crane Services	£1,500,000	4	1	2	46
Lift	£160,000	2	0	1	30
Marsden Crane Services	£1,100,000	2	1	1	24
NMT Crane Hire	£3,000,000	0	0	2	50
Radius	N/D	0	0	1	92
Sarens UK	N/D	13	0	5	130
Select Plant Hire	£25,400,000	0	0	3	40
Southern Cranes & Access	£6,000,000	7	5	4	92
Sparrow Crane	£5,100,000	0	0	2	85
Stoddart Crane Hire	£2,400,000	3	2	1	20
Thanet Crane Hire	£1,070,000	3	2	2	24
Trident Lifting Solutions	£5,750,000	0	0	2	0
Tusker Crane hire	N/D	5	0	4	70
Uperio UK	£5,000,000	0	0	3	48
Weldex	£4,600,000	5	0	2	150
Windhoist		0	1	2	300



EXPERIENCE THE DIFFERENCE,  
EXPERIENCE RADIUS  
PLEASE CALL +44 (0)1604 622 865



info@radiusgroup.co.uk  
www.radiusgroup.co.uk



**ABILITY**



TOP CRAWLER CRANE COMPANIES

Company	Total	Spider Cranes	Telescopic	Lattice	Mini (<12t)
Weldex	154	0	50	103	1
Select Plant Hire	81	0	38	40	3
AGD Equipment	70	0	52	10	8
NRC Plant	70	0	15	30	25
Delden Cranes	58	0	14	44	0
Q Crane & Plant Hire	50	0	6	42	2
G.H. Johnson Crane Hire	40	0	10	30	0
BPH Equipment	35	0	10	25	0
Sarens UK	22	0	5	17	0
Jones Crawler Cranes	20	0	10	8	2
Sparrow Crane	20	11	0	0	9
Hawks Crane Hire	18	0	6	12	0



LARGEST CRAWLER CRANES

Company	Capacity	Make & Model	# in Fleet
Sarens UK	1,600t	Demag CC8800	1
Weldex	1,350t	Liebherr LR 11350	N/D
Mammoet	1,200t	Gottwald AK-912-1	N/D
Windhoist	750t	Liebherr LR 1750	1
Ainscough	600t	Terex CC2800	1
Delden Cranes	400t	Demag CC2400-1	1
Hawks Crane Hire	300t	Liebherr LR1300	1
Select Plant Hire	300t	Liebherr LR 1300	4
NRC Plant	275t	HSC SCX2800A-3	N/D
G.H. Johnson Crane Hire	250t	Kobelco CKE2500G	2
BPH Equipment	250t	Kobelco CKE2500-2	N/D



TOP MINI/SPIDER/PICK & CARRY COMPANIES

Company	Total	Mini Crawlers	Spider Cranes	Pick & Carry
GGR Group	226	0	157	69
Hird	162	86	0	76
Coppard Plant Hire	73	1	65	7
Lift	73	3	69	1
AMC Hire	57	1	55	1
TCA Lifting	29	6	20	3
City Lifting	28	4	18	6
NRC Plant	25	25	0	0
Sparrow Crane	20	9	11	0
John Taylor Crane Services	9	1	8	0
AGD Equipment	8	8	0	0
Marsden Crane Services	8	1	4	3
Emerson Crane Hire	6	3	3	0
Crowland Cranes	6	2	2	2
Southern Cranes & Access	6	0	5	1



THINK

- PLANT INSTALLATIONS
- TOWER CRANE HIRE
- LIFTING ASSURANCE & CONSULTANCY
- CONTRACT LIFT SOLUTIONS





# THE UK'S MARKET LEADING PROVIDER OF VAN MOUNTED ACCESS PLATFORMS FOR HIRE AND LONG-TERM LEASE

We are a true specialist in our chosen field, offering a fully inclusive solution including **servicing and breakdown, 24/7/365 operational support and asset management**. Access Lease allows customers to lock into a **fixed, low monthly rate** providing protection from financial uncertainty.

**NEVER SETTLE FOR SECOND BEST**



Highest quality specification



Market-leading products



Cost saving & added value



Expert knowledge from passionate professionals



**ACCESSLEASE**

KELLING GROUP

- New Vehicles
- Tax Relief
- Flexible Durations
- Fully Maintained
- 24/7/365 Support
- Expert Knowledge
- Short Lead Times
- Low Monthly Payments

Contact Harry Kidd, National Sales Manager  
for further information:

[harry.kidd@accesshirenationwide.com](mailto:harry.kidd@accesshirenationwide.com)

**07966 776530**





# ACCESS

With only a handful of the leading rental companies reporting fleet reductions, the UK powered access market appears to be buoyant enough for owners to invest in future expansion - despite the current challenges.

There has been significant growth in the middle of market, either organically or through acquisition. Companies such as MEP Hire, Summit Platforms, Star Platforms, GT Access, Advanced Access and Hire Safe Solutions have all added a sizeable number of platforms, spending more than £77 million, with Summit and Hire Safe Solutions spending

more than £40 million between them.

The other big spender is Access Hire Nationwide which now has almost 1,350 van mounted platforms - more than double its nearest rival - and still investing.

The increasing popularity of Chinese built platforms can be seen in the number of companies now running large Dingtli machines. The large boom market is still dominated by JLG and Genie but with more as the new entrants now offering even the larger boom lifts this could start to change in the coming years.

## TOP POWERED ACCESS COMPANIES

Company	Total	Booms articulated	Booms str. telescopic	Self prop. slab scissors	Spider lifts	Push arrounds	Mast booms	Mast lifts	Truck mount	Van mount	Trailer lifts
Nationwide Platforms	14580	▲	4019	553	6754	98	561	600	1380	293	322
Speedy Powered Access	8974	▲	766	45	3683	7	3277	287	897	7	5
AFI-Uplift	6558	▲	1704	133	3831	54	54	169	409	86	118
MEP Hire	6200	▲	0	0	200	0	6000	0	0	0	0
Summit Platforms	5031	NEW ENTRY	1190	274	2840	0	344	111	272	0	0
Sunbelt Rentals	3837	▼	1129	466	1919	10	22	291	0	0	0
HSS Hire	3500	▼	0	0	300	0	3000	100	100	0	0
Star Platforms	3405	▲	410	0	1925	0	719	351	0	0	0
GT Access	3375	▲	708	35	2143	32	170	177	50	20	40
Aspire Platforms	3184	—	1634	0	801	0	637	112	0	0	0
JMS Powered Access	2869	▲	330	25	1260	52	1100	38	64	0	0
Height For Hire	2772	—	990	350	950	100	100	30	50	200	2
Briggs Equipment	2600*	▲	0	0	0	0	0	0	0	0	0
Charles Wilson Engineers	1960	▲	709	0	780	3	339	63	66	0	0
Advanced Access Platforms	1773	▲	302	44	917	26	355	129	0	0	0
Hire Safe Solutions	1422	▲	466	484	388	30	42	10	2	0	0
Access Hire Nationwide	1335	▲	0	0	0	0	0	0	70	1265	0
Mainline	1085	▲	259	44	540	15	135	55	32	0	5
Rival UK	1058	▼	228	89	626	0	0	25	90	0	0
Elavation	1018	▲	460	2	388	28	90	10	32	0	8
Horizon Platforms	824	▼	83	0	462	0	155	124	0	0	0
KDM Hire	821	▲	167	56	446	10	106	12	6	12	6
JPS Platforms	717	▲	73	2	415	4	143	26	54	0	0
1 Up Access	670	▲	264	34	350	0	0	20	0	0	2
Hird	666	▲	181	12	381	5	72	15	0	0	0
Smiths Equipment Hire	634	▲	115	0	353	2	116	24	20	0	4
Media Access Solutions	616	▲	216	35	342	0	4	15	0	4	0
UK Powered Access	602	—	107	8	356	1	40	31	17	39	3
Powered Access Services	581	—	269	12	287	1	6	6	0	0	0
Premier Platforms	523	▲	142	12	304	1	29	13	20	1	1
Gwynedd Forklifts	518	▲	147	22	298	2	8	41	0	0	0
Mr Plant Hire	463	▼	65	8	209	5	110	9	55	0	2
Upward Powered Access	451	—	120	10	270	6	10	35	0	0	0
Select Plant Hire	441	—	36	0	405	0	0	0	0	0	0
Access Plus	435	—	90	5	340	0	0	0	0	0	0
Bella Access	407	▲	65	10	244	1	40	12	35	0	0
OK Tool Hire	404	▲	60	23	268	2	12	15	20	2	2
2 Cousins	354	—	85	10	210	12	25	10	1	0	1
One Stop Hire	328	▲	0	0	83	0	245	0	0	0	0
LTC Powered Access	313	▼	106	33	141	9	15	9	0	0	0
Aerial Platform Hire	293	—	50	33	194	1	8	7	0	0	0
Manlift Hire	284	▲	68	15	171	2	4	19	5	0	0
United Powered Access	247	▲	68	3	131	0	15	15	15	0	0
Ashbrook	234	▼	93	4	115	0	0	22	0	0	0
Smart Platform Rental	226	NEW ENTRY	0	0	0	0	0	0	176	50	0
Dromad Hire	225	▲	46	0	112	17	16	10	11	0	13
The Platform Hire Centre	220	▲	31	4	136	0	15	20	14	0	0

Fleet size in the last 12 months has: ▲ Increased ▼ Decreased — Remained the same

\* Briggs Equipment includes: Balloo Hire, Briggs Equipment in Ireland, Access Plus, Aerial Platform Hire, GPT and GFL



## TOP TRUCK MOUNTED FLEETS

Company	Total	Truck	Van
Access Hire Nationwide	1335	70	1265
Nationwide Platforms	615	293	322
Height For Hire	250	50	200
Smart Platform Rental	226	176	50
AFI-Uplift	204	86	118
Blade Access	75	67	8
Elev8 Access Platforms	56	38	18
UK Powered Access	56	17	39
NSS Hire	32	15	17
Orion Access	30	30	0
Maps Platforms	26	6	20
GT Access	20	20	0
PG Platforms	20	12	8
KDM Hire	18	6	12



# TOP 30 RENTAL COMPANIES

## LARGEST SCISSOR LIFTS

Company	Height & Model	# in Fleet
JMS Powered Access	34m JLG Liftlux 320-30	N/D
Nationwide Platforms	34m Holland Lift HL340D	3
Mainline	34m Holland Lift G320	8
Blade Access	33.5m Holland Lift HL340D	N/D
Hire Safe Solutions	33.5m Holland Lift HL340D30	13
Riwal UK	33.5m Holland Lift HL340D30	3
1 Up Access	32m Dingli JCPT 3214DC	4
Advanced Access Platforms	32m Dingli JCPT3214	2
Powered Access Services	27.5m PB 275-24RT	2
KDM Hire	27m Holland Lift 275D25	N/D
Height For Hire	26m JLG Liftlux 245-25	11
Horizon Platforms	22.5m PB Lift 225-12	N/D
Speedy Powered Access	22.5m PB S225-24DS	N/D
Charles Wilson Engineers	22m Dingli JCPT2223DC	6
Elavation	22m Dingli 2212	8
GTAccess	22m Dingli 2223DC	4
Premier Platforms	22m Dingli 2212DC	N/D
Star Platforms	22m Dingli 2212/2223DC	30
Mr Plant Hire	22m Dingli 2212DC	4
Cannon Access	21.5m Holland Lift B195	N/D
OK Tool Hire	21,5m Holland Lift B195	2
United Powered Access	19.5m Skyjack SJ9664	N/D
Media Access Solutions	19m Airo XL19E	N/D
APH Cranes & Access	18m Genie 5390	4
UK Powered Access	18m Skyjack SJ9258	4



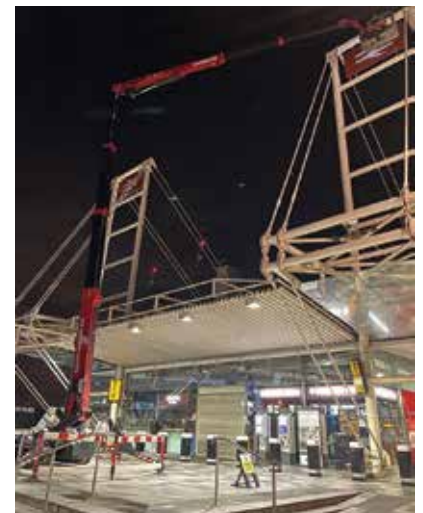
## LARGEST SPIDER LIFTS

Company	Height & Model	# in Fleet
JMS Powered Access	52m Falcon FS520C	N/D
TCA Lifting	52m Palazzani XTJ52	1
Hire Safe Solutions	50m Teupen Leo50GTX	2
Elite Access Rentals	43m Platform Basket 43T	1
Fletcher Access	42m Ommelift 4200 RBDJ	1
Height For Hire	42m Falcon FS420C	3
Clerkin Elevation	42m Ommelift 4200 RBDJ	1
Spiderlift	42m Falcon FS420C	N/D
Speedy Powered Access	36m Teupen Leo36T	N/D
Blade Access	36m Teupen Leo36T	4
Elev8	36m Teupen Leo36T	3
Orion Access	34m Palazzani TSJ 34	N/D
Elavation	33m Hinowa 33.17	2
AFI-Uplift	33m Falcon FS330Z	1
PG Platforms	33m Hinowa 33.17	N/D
Rapid Platforms	33m Falcon FS330Z	N/D
Nationwide Platforms	31m Teupen Leo31T	8
Acrolift	30m Teupen Leo30T	1
Advanced Access Platforms	26m Hinowa 26.14	4
Cannon Access	26m Hinowa 26.14	1
GT Access	26m Hinowa 26.14	10
Hird	26m Hinowa 26.14	1
KDM Hire	26m Hinowa 26.14	N/D



## LARGEST TRUCK MOUNTED LIFTS

Company	Height & Model	# in Fleet
Blade Access	102.5m Palfinger P1000	7
BMS	102.5m Palfinger P1000	1
Height For Hire	90m Bronto S90HLA	11
Elev8 Access Platforms	90m Palfinger P900	2
Nationwide Platforms	90m Bronto S90HLA	1
Clearview Access	90m Ruthmann T900-HF	1
AFI-Uplift	75m Palfinger P750	1
NSS Hire	70m Bronto S70XDT	3
ACS Access	70m Palfinger WT700	N/D
Palmer Access	56m Bronto S56XR	N/D
Smart Platform Rental	54m Bronto 56m XR	N/D
Media Access Solutions	54m Bronto 56m XR	2





LARGEST BOOM LIFTS

Company	Height & Model	# in Fleet	Boom type
Hire Safe Solutions	58m JLG 1850SJ	7	S
Riwal	58m JLG 1850SJ	6	S
AFI-Uplift	58m JLG 1850SJ	2	S
JMS Powered Access	58m JLG 1850SJ	2	S
Nationwide Platforms	58m JLG 1850SJP	4	S
Advanced Access Platforms	48m Genie SX150	1	S
KDM Hire	48m Genie SX150	N/D	S
Height For Hire	47m JLG 1500SJ	6	S
1 Up Access	44m Dingli BT44RT	1	S
Sunbelt Rentals	43m Genie ZX135	15	S
Gwynedd Forktrucks	43m Genie ZX135	3	S
Blade Access	43m Genie ZX135	16	A
AFI-Uplift	43m Genie SX-135-XC	19	S
APH Cranes & Access	43m Genie ZX135	2	A
Mainline	43m Genie ZX135	9	A
Media Access Solutions	43m Genie SX135-XC	2	S
Speedy Powered Access	43m JLG 1350SJP	N/D	S
CW Access Rental	43m JLG 1350SJP	3	S
Powered Access Service	43m Genie ZX135	3	A
LTC Powered Access	40m JLG 1250AJP	2	A
GT Access	40m Genie S125	2	S
Elavation	30m Dingli 30BTE	2	S
APH Cranes & Access	28m Genie S85	1	S
Bella Access Ltd	28m Genie S85	2	S
Star Platforms	28m Nifty HR28	7	A
Premier Platforms Limited	28m JLG 860SJ	N/D	S
Mr Plant Hire	27m Manitou 280TJ	6	S
The Platform Hire Centre	27m Manitou 280TJ	2	S
OK Tool Hire	27m Manitou 280TJ	N/D	S
United Powered Access	27m Manitou 280TJ	N/D	S

S - straight A - articulated

WHAT PERCENTAGE OF YOUR FLEET IS HYBRID/ELECTRIC/DIESEL?

Company	Electric	Hybrid	Diesel
Acrolift	50%		50%
LTC Powered Access	50%	10%	40%
Summit Platforms Limited	50%	8%	42%
Sunbelt Rentals	47%	10%	43%
Ashbrook	44%	13%	43%
Elavation	40%	32%	28%
Upward Powered Access	40%	40%	20%
1 Up Access	38%	19%	43%
Powered Access Services	36%	18%	46%
APH Cranes & Access	35%		65%
Media access solutions	24%	51%	25%
Advanced Access Platforms	19%	78%	3%
Premier Platforms Limited	14%	60%	26%
Access Plus	13%	9%	78%
Hird	12%	48%	40%
AFI-Uplift	6%	63%	31%
Gwynedd Forklifts	2%	49%	49%
OK Tool Hire	1%	64%	35%
Elev8 Access Platforms			100%
Maps Platforms		100%	



+39 071 78 19 090  
www.bravi-platforms.com  
info@bravi-platforms.com



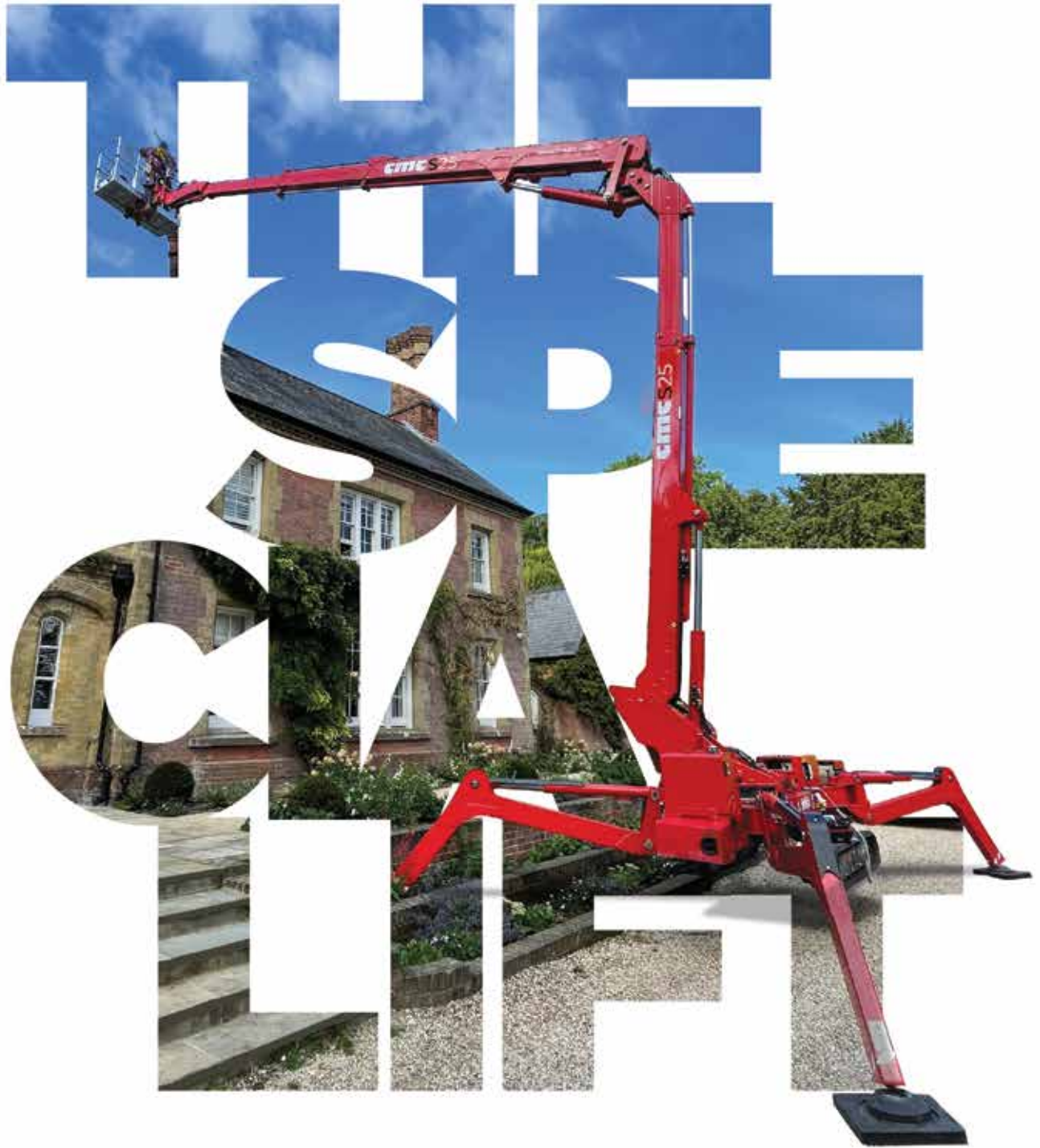
# TOP 30 RENTAL COMPANIES

## COMPANY DETAILS & INVESTMENT

Company	Investment	Depots	Staff	# Bought	#Sold
Summit Platforms	£21,500,000	9	243	13	0
Access Hire Nationwide	£21,100,000	3	75	-	-
Hire Safe Solutions	£20,000,000	2	60	390	31
GT Access	£14,000,000	12	160	1071	4
Star Platforms	£8,500,000	7	157	-	-
Advanced Access Platforms	£8,250,000	4	58	729	202
Gwynedd Forklifts	£5,000,000	2	52	93	13
JMS Powered Access	£5,000,000	5	75	-	-
MEP Hire	£5,000,000	11	240	1200	100
Baloo	£2,500,000	8	-	-	-
Smiths Equipment Hire	£2,374,214	16	168	131	39
Media Access Solutions	£2,200,000	3	25	48	3
JPS Platforms	£2,200,000	1	28	-	-
1 Up Access	£2,100,000	1	42	57	37
Mr Plant Hire	£2,000,000	3	69	59	43
Premier Platforms	£1,550,000	3	26	89	3
Elavation	£1,400,000	2	44	109	76
Dromad Hire	£1,250,000	2	32	77	45
Hird	£1,225,700	3	89	22	8
United Powered Access	£1,207,000	1	13	-	-
Rival UK	£780,000	3	57	-	-
LTC Powered Access	£550,000	3	23	34	0
Bella Access	£500,000	2	20	52	0
The Platform Hire Centre	£500,000	1	15	34	0
Manlift Hire	£250,000	3	12	9	0
Maps Platforms	£230,000	1	7	6	1
Elev8 Access Platforms	£220,000	3	58	1	1
One Stop Hire	£145,000	25	232	30	0
Sunbelt Rentals	N/D	223	4100	856	143
Height For Hire	N/D	34	198	N/D	N/D
Charles Wilson Engineers	N/D	31	390	-	-
Nationwide Platforms	N/D	31	1089	1865	545
AFI-Uplift	N/D	19	332	-	-
M & J Engineers	N/D	12	145	N/D	N/D
Smart Platform Rental	N/D	7	72	-	-
KDM Hire	N/D	5	165	N/D	N/D
Upward Powered Access	N/D	4	18	-	-
Select Plant Hire	N/D	3	14	-	-
Ashbrook	N/D	2	102	N/D	N/D
Powered Access Services	N/D	2	33	-	-
OK Tool Hire	N/D	2	19	39	17
Horizon Platforms	N/D	1	75	N/D	N/D
Acrolift	N/D	1	2	2	-
APH Cranes & Access	N/D	1	-	-	10
Mainline 1982	N/D	1	47	83	98
Speedy Powered Access	N/D	N/D	N/D	776	435







**No matter your specialisation, you deserve our special attention.**

The same dedication that we attribute to the manufacturing of our aerial platforms. No less than 14 models divided into six families, designed to respond perfectly to your requirements and your specific professional needs: **from tree care to the maintenance of buildings, installations and infrastructures; from restoration to work on high-voltage lines.**

Discover the advantages of the CMC range on our website.

Bauma 2022  
Munich  
October 24-30  
Stand FS.1302/2

**CMC**  
THE SPECIALIST

[www.cmclift.com](http://www.cmclift.com)



# TELEHANDLERS

This year's submissions would suggest that most of the larger telehandler rental companies have increased their fleet size - some of them significantly. However as with the crane and access data inputs, many companies seemed reluctant to volunteer their information forcing us to estimate more fleets than we would have liked. Given the more fragmented nature of the telehandler rental market it has always proven to be the most difficult of the three to generate responses.

We did ask the question of how many all-

electric models companies had in their fleets. A few companies responded however it is clear that while this sector is growing rapidly, the numbers are still too small to be meaningful. With more manufacturers introducing all-electric models into their ranges this will surely change over the next year or two.

There appears to have been a slight increase in the number of 360 degree machines, again possibly because of the increasing competition and range of products available.



## TOP TELESCOPIC HANDLER COMPANIES

Company	Total	Fixed	360°	Compact	Heavy duty	Largest fixed	Largest 360°	Depots	Employees	Investment
Ardent Hire Solutions	3,493 ▲	2,800	41	650	2	20m	32m	11	N/D	N/D
Sunbelt Rentals	2,413 ▲	2,112	0	301	0	N/D	N/A	200	3,500	N/D
UK Forks	2,053 ▲	1,782	76	185	10	20m	30m	9	151	N/D
Morris Leslie	1,945 ▲	1,675	0	270	0	20m	N/A	14	220	N/D
CW Plant Hire	1,755 ▲	1355	25	375	0	20m	26m	31	390	£9,500,000
Plant Hire UK	875 —	850	0	25	0	20m	N/A	1	N/D	N/D
Plantforce	700 —	N/D	N/D	N/D	N/D	N/D	N/D	7	N/D	N/D
Hessle	640 —	528	38	48	26	18m	32m	4	54	0
Greenwood Hire	555 ▲	225	190	75	65	17m	35m	9	N/D	N/D
Jarvie Plant	520 ▲	395	40	85	0	20m	30m	11	165	£12,000,000
Boles Hire	467 ▲	307	78	80	2	51m	N/D	1	16	N/D
HE Services	426 —	298	0	128	0	20m	N/A	10	123	0
Nixon Hire	400 ▲	345	0	55	0	17m	N/A	13	500	0
GT Lifting	380 ▲	100	200	20	60	17m	46m	4	30	£9,500,000
B&T Plant Hire	365 —	300	0	65	0	18m	N/A	2	32	N/D
M & J Engineers	270 —	200	0	70	0	N/D	N/A	12	145	N/D
Chippindale Plant	269 —	269	0	0	0	N/D	N/A	9	115	N/D
Summit Platforms	255 <small>NEW ENTRY</small>	255	0	0	0	N/D	0	9	243	N/D
Ashbrook	242 ▼	207	0	35	0	20m	N/A	2	98	N/D
GPT	195 ▲	170	25	0	0	18m	21m	8	100	N/D
Hubbway Plant Hire	176 —	135	12	29	0	18m	26m	1	N/D	N/D
L Lynch Plant Hire	152 —	97	4	51	0	20m	26m	5	720	N/D
Gwynedd Forklifts	141 <small>NEW ENTRY</small>	127	0	14	0	20m	N/A	2	54	£5,000,000
Mervyn Lambert Plant	130 —	100	0	30	0	18m	N/A	4	250	N/D
ABBA Plant Hire	124 <small>NEW ENTRY</small>	65	0	9	50	20m	N/A	1	N/D	N/D
KDM Hire	121 ▲	82	4	34	1	19m	30m	5	165	N/D
AFI/Hampshire Plant	120 —	70	10	40	0	20m	30m	19	332	N/D
Briggs Equipment	100 <small>NEW ENTRY</small>	60	10	30	0	17m	19m	6	N/D	N/D
Emmitt Plant	93 ▲	75	8	10	0	17m	N/A	3	50	N/D
Fairfax Plant Hire	92 ▲	70	0	22	0	20m	N/A	2	60	N/D

Fleet size in the last 12 months has: ▲ Increased ▼ Decreased — Remained the same N/A Non applicable N/D Not disclosed

NATIONWIDE HIRE & SALES  
 25 YEARS EXPERIENCE  
 MERLO SPECIALISTS  
 ROTATING TELEHANDLERS  
 HEAVY LIFT SERVICES  
 SPECIALIST ATTACHMENTS  
 LIFT PLANS & RAMS  
 CONTRACT LIFT SERVICES  
 CPCS TRAINED WORKFORCE  
 INDUSTRY LEADING SERVICE BACK UP

THINK BIG  
 THINK ROTO  
 THINK GT LIFTING



## GT LIFTING - FOR THE PERFECT LIFT

GT Lifting are the UK's leading Merlo Roto Hire specialists and original importers and users of the machinery in this country.

Our reputation for providing high-quality lifting solutions is reinforced by our excellent customer support service, making us market leaders in Roto & Heavy Lift Telehandler hire. GT Lifting provide lifting hire solutions to companies of all sizes across the UK and with over 35 years' experience in the industry, you can be assured that our staff have the knowledge necessary to support all of your lifting needs.

### UK's largest selection of Merlo Rotating Telehandlers

#### ROTATING TELEHANDLER APPLICATIONS

- GENERAL CONSTRUCTION
- CLADDING INSTALLATION
- DRY WALLING

- MODULAR BUILDINGS
- TIMBER FRAMES
- STEEL ERECTION & GLAZING
- POWER & ENERGY

SALES	HIRE	TRAINING	SERVICE	PARTS

For all your lifting requirements call GT Lifting

GTlift.co.uk 0345 603 7180

HIREDESK@GTLIFT.CO.UK | SALES@GTLIFT.CO.UK | PARTSANDSERVICE@GTLIFT.CO.UK  
 DEPOTS IN SLINFOLD (WEST SUSSEX), YORK, LEICESTER, GLASGOW

