

VALLA LAUNCHES RADIO CONTROLLED CRANES

The Valla division of Manitex is to launch two new pedestrian controlled pick & carry cranes - the 4.6 tonne V46 R and the 13 tonne V130 RX - in October. They join the recently announced seven tonne 70 R and new 10 tonne V100 RX.

The battery electric remote controlled V46 R slots into the range between the current 3.6 tonne V36 R and six tonne V60 R. It features a three section 7.5 metre boom with an optional short luffing jib.

The 13 tonne V130 RX is as compact as its 'sister crane' - the 10 tonne V110 R - and features a 10 metre, three section boom, to which a hydraulically luffing jib can be added. Capacity at full height is seven tonnes, while the capacity at maximum forward reach of six metres from the front bumper is just over three tonnes. Overall width is 1.5 metres with an overall height of 1.95 metres.



'NO OIL' SCISSOR LIFTS FROM ZOOMLION

Chinese manufacturer Zoomlion has announced two new '100% Electric, Zero Leaks' slab electric scissor lifts. The new models - the 14ft ZS0407E and 19ft ZS0607E - both feature direct electric wheel motor drive while using electric linear actuators to operate the steering and platform lift.

Both units have an overall width of 760mm. The overall length of the 14ft is just 1.44 metres putting it in the micro scissor class - while the 19ft is a classic 1.85 metres long. Both have overall stowed heights with guardrails up of more than two metres, but they apparently fold down relatively easily to 1.7 and 1.79 metres respectively. The 14ft ZS0407E has a 600mm roll out platform extension, while the 19 has a more typical 910mm extension.

Features include a real time lift height display - said to be accurate to within three percent - and a load indicator with a live display of the actual load on the platform to within five percent accuracy.



LGMG LITHIUM ION RT SCISSOR

Chinese manufacturer LGMG has launched the SR1623E/SR5390E battery powered Rough Terrain scissor lift. The SR1623E is based on the SR1623D/SR5390D diesel model, with which it shares most of its componentry. The principal difference between the two is that the E uses an electric motor in place of the diesel engine, fed by a large high capacity lithium ion battery pack.

The new model has an overall width of 2.3 metres, an overall length of 4.9 metres, and a working height of 17.9 metres. Dual deck extensions - 1.45 metres at the front and 1.14 metres to the rear - provide a 7.4 metre long extended platform with a maximum platform capacity of 680kg. Four wheel drive, oscillating axles and auto-levelling hydraulic levelling jacks are all standard. Overall weight is around 8,200kg.

The unit tops out LGMG's '23E' series which includes models from 12 metres working height and up to 1,100kg platform capacity.



The new 53ft LGMG SR1623E

NEW OWNER FOR CELA

Italian investor Consilium Private Equity fund has acquired the majority stake in Italian Spider lift, truck mounted lift and fire rescue platform manufacturer Cela.

The senior management team of Paolo Troni, Roberto Rocca and Simone Scalabrini will retain a substantial stake in the company - the level of which has not yet been disclosed. Chief executive Paolo Troni will continue to run the business with the additional support of independent advisor Stefano Di Santo, a manager at Haulotte until 2012. Cela has revenues in the region of €45 million and has achieved strong growth over the past couple of years as it has expended its product line and geographic spread.

Paolo Troni said: "The agreement with Consilium represents a further important step for the development of Cela. We are convinced that we have chosen the best partner to help us carry on the path that the company has taken in recent years."



SNORKEL CEO STEPS DOWN

Snorkel and Xtreme Manufacturing chief executive Matthew Elvin has stepped down from his role and left the company. He hands over to Cory Rosencranse who was previously chief operating officer of Ahern Rentals.

In concert with the new appointment the company is restructuring its senior management team. Outgoing chief executive Matt Elvin joined Snorkel in 2010 as president of Australia and New Zealand and was promoted to chief executive in 2015. Rosencranse joined Ahern Rentals in 2016

as vice president of operations and was promoted to chief development officer in 2019 and then chief operating officer.



Matthew Elvin



Cory Rosencranse

FIRST CBG 500 E FOR ZHD STEVEDORES

Dutch company ZHD Stevedores has purchased the first of Liebherr's new CBG 500 E electric transshipment crane, unveiled last year.

The crane - scheduled for delivery in October with operations due to start in December or January - features a 50 metre boom, and can handle 105 tonnes on the hook, or 90 tonnes with the bulk grab attachment, with a transfer performance of 2,000 tonnes of bulk product per hour.

ZHD Stevedores has been providing stevedoring services since 1968, operating in the Rotterdam-Rijnmond area using both mobile harbour and floating cranes.



JLG REDESIGNS SKYTRAK TELEHANDLERS

JLG has started redesigning its North American SkyTrak telehandler line improving functionality, adding new technology and improving serviceability. The first machines will be the 6,000lbs/2,700kg 6034 and 6042 models with lift heights of 34ft/10.4m and 42ft/12.8m respectively. Forward reach is 23ft/7m and 29ft/8.8m.

The 6034 telehandler replaces the 6036 model, while the 6042 has been updated from the current model with the new features. The units are lighter at 14,500lbs/6,600kg and 19,100lbs/8,660kg with an 'optimised' frame structure allowing three 6034s or two 6042s to be hauled on a trailer. The 6034 is light enough to be transported with a standard pickup truck and trailer in North America.

Options include an enclosed cab with air conditioning and single joystick 'electric over hydraulic' controls with the auxiliary hydraulic function and attachment tilt built in for improved productivity. A new advanced control system allows for more options such as load stability indication (LSI), seatbelt engagement and operator presence, along with improved diagnostics. The new cab features a large LCD display with single page load charts. Power comes from a Deutz diesel that doesn't require exhaust fluid, driving a hydrostatic transmission. A multi-reverse day/night camera system features left and right-side backup cameras and a tri-view monitor. Service enhancements include a 30 percent reduction on hydraulic hoses and connections, and a top mounted telescopic cylinder.



Skytrak 6042

PM'S LAUNCHES HEAVY LIFT CRANE

Italian loader crane manufacturer PM has launched the 59.4 tonne/metre 70.5 SP for installation on 32 or 44 tonne chassis with new features aimed at increasing efficiency and safety. Maximum capacity is just over 13 tonnes at a radius of 4.55 metres. Maximum tip height is 34.8 metres with a capacity of 580kg, which it can also handle at the maximum radius of 31.6 metres with the full eight section boom and seven section jib.

A notable feature is the 'Smart Winch' which automatically co-ordinates the winch operation in synchronisation with the boom and jib telescoping, preventing two-block situations. It also includes 'Auto-Folding'/automatic crane stowage activated by pressing a button on the remote controller, reducing the risk of damaging the crane or truck/attachments during folding and unfolding of the crane, especially when the jib or other more complex attachments are installed.

The features will shortly be available on all medium to large PM cranes with a digital interface. PM is also working on a load control device that helps limit or prevent load sway and swing caused by abrupt operation.



TWO 650 TONNE TADANO CRAWLERS

Tadano is finding renewed interest in its 650 tonne CC38.650-1 - previously the Demag CC3800-1. The latest sales include a unit delivered to Nordic Crane of Norway and another scheduled for delivery to UK heavy lift and rigging company Osprey later this year.

The 650 tonne crane is rated at a 12 metre radius and comes with a 171 metre main boom and 193 metre maximum tip height. Nordic's new crane went straight to work lifting two 54 metre long,

seven metre wide, 135 tonne road bridges in Lysaker, near Oslo, Norway.

The Osprey crane is its second CC 38.650-1/CC3800-1 and features a Stage V power unit.



Nordic Crane's CC38.650-1 fully rigged



Nordic Crane's CC38.650-1 with full stick

PLATFORM BASKET FOR INDONESIAN RAIL

A delegation from Indonesian railway company KAI and railway supply company CBP visited the Platform Basket factory and offices in Poviglio, Italy to carry out the first unit inspection of an order for a number of 40ft RR14 Evo 3-400 specialist road-rail self-propelled articulated boom lifts.

The RR14 Evo 3-400 has a working height of 14.1 metres, an outreach of 9.3 metres at an up & over height of four metres, with a maximum platform capacity of 400kg. The booms can work equally well on wheels or rail tracks, where the automatic self-levelling of the superstructure allows them to operate safely on banked and inclined tracks.



The RR14 Evo 3-400

LEGUAN ADDS CAPACITY

Finnish aerial lift manufacturer Leguan Lifts has restructured and expanded its spider lift production lines leading to the recruitment of 25 additional employees. Managing director Esa Vuorla said: "This move aligns us with our long term growth objectives. With the added workforce and full control of the assembly process, we are confident in our ability to enhance efficiency."



MORE CRANES FOR BALDWINS

Baldwins Crane Hire in the UK has purchased six more large All Terrain cranes as part of a 'strategic fleet investment programme'.

The latest units include two 120 tonne four axle Liebherr LTM1120-4.1 with 66 metre main booms, four five axle Grove All Terrains - two 120 tonne GMK 5120L with seven section 66 metre main booms, topped by a 9.4 to 16 metres bi-fold swingaway extension, and two 250 tonne GMK 5250XL which boast a 78.5 metre eight section main boom plus a 17.8 metre bi-fold swingaway extension that can be extended to 33.8 metres with additional inserts offering a maximum tip height of 109 metres. They join the company's second 450 tonne Liebherr LTM 1450-8.1 delivered at the end of last year.



Baldwins' new Grove GMK 5120L

ADASTRA CALLS IN THE ADMINISTRATORS

UK mastclimber and hoist rental company Adastra Access Ltd has appointed a joint administrator to decide its future. Sister company Yorkshire Hoists remains a separate corporate entity and is, we understand, not affected by the administration. The joint administrators are Glasgow based Blair Carnegie Nimmo and Edinburgh based Alistair McAlinden.

Based in the West Midlands Adastra had revenues in 2021 of £5.5 million, with a pre-tax profit of £770,000. It works throughout the UK with a fleet of around 400 mastclimbers with platform capacities up to 5,000kg. The company also provides suspended platforms and monorail systems.

70 MULTITEL TRUCK MOUNTS FOR BOELS

Dutch international rental group Boels has ordered 70, 3.5 tonne truck mounted lifts from Multitel Pagliero.

Negotiated earlier this year, the first units are now beginning to arrive at Boels' facilities in Belgium, the Netherlands, Italy, Austria, and the Nordic countries. All 70 models will be equipped with Multitel's EVE electronics suite, which helps users of all skill levels operate the machines safely and efficiently, as well as a full telematics system with GPS tracking, machine status display, remote setting of permitted functions and diagnostics.



[(L-R) Ton Brockbernd of Boels with Roberto Marangoni of Multitel and Eric Bergqvist of Boels

HAVE YOUR SAY ON TRAINING

Readers with businesses in the UK, have the chance to 'influence' UK government policies relating to trade skills and education, including the future of the CITB (Construction Industry Training Board) and Engineering Construction Industry Training Board (ECITB). The review is part of a wider programme to ensure that 'Arm's Length Bodies' remain effective and fit for purpose.

The Department for Education wants to hear from employers regarding the CITB levy, as well as trade bodies and representative groups. The CPA, IPAF, PASMA and ALLMI will provide their own feedback, but members are also encouraged to respond directly based on their experience with the CITB.

The consultation can be accessed via: <https://consult.education.gov.uk/corporate-sponsorship/industry-training-board-review-call-for-evidence> and closes on the 25th of August.

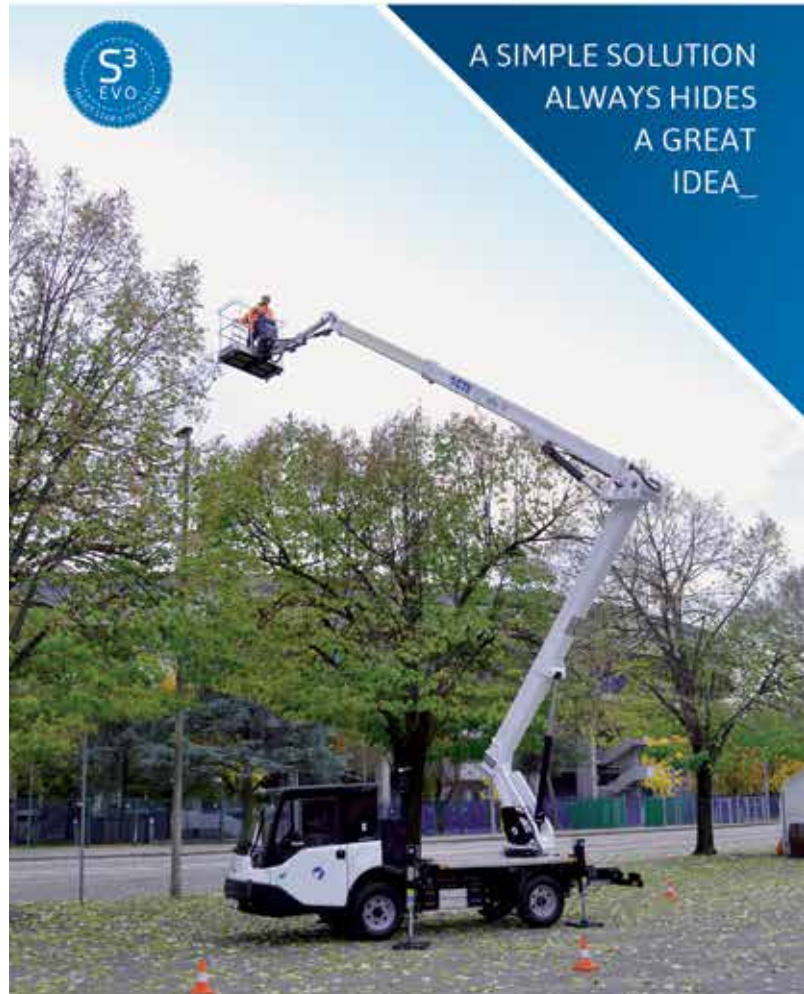


NEW SPIDER LIFT COMPANY

Dean Hobbs, owner of HBS Electrical Services, in the UK has established a new business - HBS Access. Both companies are based in Walpole St Andrew, in Norfolk.

Hobbs established HBS Electrical Services in 2018 to specialise in commercial and domestic installation, testing, inspecting and emergency lighting,

becoming a regular user of aerial work platforms and in particular spider lifts along the way. Last year he purchased his own machine, a 22 metre CMC S22HD, and was surprised by local rental demand for it. He has now acquired a second machine, a 23 metre CMC S23, and set up the rental company.



A SIMPLE SOLUTION
ALWAYS HIDES
A GREAT
IDEA_

CTE MP 20 Ev

PERFORMANCE:
WORKING HEIGHT: 20 M
OUTREACH: 13 M
CAPACITY: MAX 250 KG
GVW: 3.5 T

A GREEN AND SILENT
REVOLUTION



100%
Electric

- ✓ Zero emission
- ✓ Zero noise
- ✓ Full productivity

www.ctelift.com



BÖCKER CELEBRATES 65 YEARS

German aluminium truck, trailer crane and hoist manufacturer, Böcker celebrated its 65th anniversary with an event for employees and ex-employees at its headquarters in Werne, Germany.

The family-owned company was established in 1958 by master blacksmith Albert Böcker, in Werne to the north of Dortmund. Albert's son Robert took over in 1990 and continued to expand the business including establishing Alp Lift. Sadly, he passed away prematurely in 2014 with the business now run by his son Alexander Böcker who has continued to develop the mobile crane product line, expand production and exports.

Böcker entered the crane market with the launch of a lightweight, aluminium boomed truck mounted crane in 1989 followed in 1997 with a trailer crane. It expanded its range to rack & pinion hoists in 2005 and now employs around 500.



The original factory in 1958



A truck mounted Böcker hoist - 1969



The Böcker AK25 - 1989

10,000TH OVERWATCH

Australian safety systems supplier, EQSS (Equipment Safety Systems) has delivered its 10,000th OverWatch secondary guarding solution for scissor lifts. The system is based on a Lidar sensor which uses an infrared light beam to track the operator's movements and determine if an operator has moved abruptly or is in a dangerous position, either of which will immediately stop the machine.

Launched in Australia in 2020, it claims it can be installed in around 20 minutes on machines from manufacturers that have approved the system, which includes all major companies. The system was introduced to Europe just over a year ago and is now CE certified. Haulotte is the first manufacturer to offer it as a factory installed option on new scissor lifts produced in France and China.



EQSS presented commemorative trophies to manufacturers and rental companies at the HIRE 23 exhibition in Sydney. (L-R) Damien Gautier of Haulotte, Scott Daly of JLG, Andrew Delahunt of EQSS, Peter Davis of Coates Hire, James Nightingale of Skyreach, Keith Clarke of Haulotte, Kieren Grogan of EQSS and Shaun O'Brien of Genie.

FIRST VTX-240 FOR STATECH

Czech aerial lift sales and rental company Statech has purchased the first 24 metre Versalift VTX-240 truck mounted lift on a Mercedes Sprinter chassis in the Czech Republic.

The VTX-240 features a three section telescopic riser topped by a three section telescopic boom and end mounted platform with variable outrigger set up, a working height of 24.2 metres and maximum outreach of 12.5 metres at an up and over height of 11.5 metres with a platform capacity of 220kg.

Statech was founded in 2005 and is the Genie distributor for Central and Eastern Europe while also offering Ommelift, Ruthmann, Magni and Versalift.



TYPE APPROVAL FOR CPL TRANSITS

CPL - the UK subsidiary of French aerial lift manufacturer Klubb - has obtained European Type Approvals for its Ford Transit van mounted platforms. Its 13.8 metre K38P features a two section boom topped by an articulating jib and offers eight metres of outreach with 100kg, while the 200kg maximum capacity is available up to 6.5 metres. Cargo payload is 320kg.

Managing director Paul Murphy said: "European Type Approval ensures our vehicles comply fully with European regulations in terms of safety and energy efficiency, but also ensures customers lead times are kept to a minimum, as we do not have to wait for IVA dates."

The company has also started applying the UKCA mark alongside the CE mark on its 13.1 metre P130A pick up mounted platforms.



FAMILY TAKES LEGAL ACTION OVER CRANE COLLAPSE

A family involved in a fatal tower crane incident in London, UK in 2020 is suing the companies that it believes are responsible. Mother and son Jacqueline and Sam Atkinson lived in a house in Bow which was demolished by a falling tower crane in July 2020, killing their 85 year old aunt, June Harvey. The two have taken legal action in the absence of any answers or resolution three years after the incident occurred. The pair blame Swan Housing Association and its subsidiary, Swan Commercial Services, along with consulting engineer PGCS Partnership which filed for voluntary liquidation last year. The crane was owned and erected by HTC which, according to the plaintiff, has been found not to be at fault at all.

In brief, the complaint says the free standing tower crane, with a counterweighted base, had a tower height of 26.5 metres and a 35 metre jib. Swan originally proposed to erect the crane on compressed fill with large outrigger mats. HTC rejected that concept and insisted on an engineered concrete base. The engineers PGCS designed four, two metre square reinforced concrete pads, one under each levelling jack. However, it changed the design after they were manufactured. So, a decision was taken to retrofit them with the additional reinforcing bars, which left an unreinforced gap in the centre of the pads.

As the crane installation was completed, one of the pads "failed" causing the crane to overturn rearwards and land on the homes opposite. June Harvey was upstairs in her home at the time and suffered a direct hit.

The crane was left in place until December of that year. According to the Atkinsons, the companies directly involved did not ensure that they were properly rehoused or offered treatment for the Post Traumatic Stress Disorder from which they were both suffering

An Inquest has yet to take place. The Police have not completed their investigations and no report has been published by the Health & Safety Executive.



WINCH
500 kg
980 kg

From 17 m to 58 m

Eco Hybrid Bi energy

Wheels Crawlers

Discover our products

WITH US YOU CAN

Palazzani

MINI CRANE HIRE

DELIVERY ANYWHERE IN THE UK

Lift LIMITED
MINI CRANES

Battery operated mini cranes

0116 283 4749
office@liftltd.com
www.liftminicranehire.co.uk

FINANCIALS ROUND-UP

Peinemann acquires Doornbos access fleet

Dutch rental company Peinemann has acquired the aerial work platform division of Doornbos Equipment including its fleet of 800 aerial work platforms. This takes Peinemann's aerial platform fleet to 1,800 units. The overall Peinemann rental fleet now numbers almost 6,000 machines.



Sunbelt buys in California

Sunbelt Rentals in the US has acquired the equipment rental assets of Elms Equipment Rental in California which was founded in 1966 and is based in Brawley near the central southern border with Mexico. Sunbelt will take over all of the regular equipment rental fleet, the staff involved with that business and will operate from Elms' three locations under the Sunbelt Rentals banner.



Strong first half for Bravi

Italian manufacturer Bravi has posted a record first half in terms of sales of new machines for the six months to the end of June, with revenues up 22 percent to just over €15 million. Sales of the Leonardo HD model accounted for 56 percent of the total, followed by the Sprint at 36 percent.



Mateco acquires H&M

German international rental group Mateco has acquired access rental company H&M Arbeitsbühnen which runs a fleet of more than 150 work platforms including boom lifts, truck mounts, trailer lifts, Almac crawlers and scissor lifts, as well as telehandlers and material lifts. It operates from three locations - Husum, Flensburg and Rendsburg.



Riwal extends credit facility

Riwal has extended its €300 million Revolving Credit Facility for a further two years. The interest rate payable will depend on the company's year on year sustainability performance improvement.



Lou-Tec takes MKS Equipments

Canadian rental company Lou-Tec has acquired aerial lift rental company MKS Équipements from Marco Simard. MKS is based in Jonquière, north of Quebec City, and covers the entire Saguenay Lac-Saint-Jean region taking Lou-Tec into new territory. It was established in 2016 and its fleet includes boom lifts, scissors, spider lifts, telehandlers and forklifts. The location will continue to trade as MKS Équipements with current employees and management under the leadership of president Marco Simard, who also becomes a regional sales manager for Lou-Tec.



Another acquisition for Mollo

Italian rental company Mollo Noleggio has acquired aerial lift and telehandler rental company Manetta Noleggi, based in Mosciano Sant'Angelo on Italy's central east coast.

This latest acquisition takes Mollo into the Abruzzo region of Italy and provides its 50th location. Manetta was established in 1999 and runs an extensive aerial lift fleet with booms, scissor lifts, spider lifts and truck mounts, as well as 360 degree telehandlers.



Sarens buys into Zanetti

Belgian international crane and heavy lift company Sarens and Italian entrepreneur Carlo Fagioli's Effe Holding business are acquiring a minority stake in Italian lifting solutions company Zanetti Solution which has 50 years of experience in custom heavy lift and rigging solutions, including jacking, skidding, testing, weighing and heavy transport for the Oil & Gas, wind power and shipyard sectors.



Hirepro acquires Upward

UK rental group HirePro Holdings has acquired Upward Powered Access from Paul Johnson and Tim Ward, in a deal brokered by The Hire Exchange. HirePro - which



also owns Liftright Access and Surrey Hire - was incorporated in 2021 and is owned by Roland Llewellyn and Mathew Williams.

Moratorium for Aspire

UK rental company Aspire has filed for protection from its creditors via a 'Notice of Intention to Appoint an Administrator' which gives the company a 10 day period in which to raise funds or find an investor to provide additional liquidity that will allow the company to keep going without entering administration.

In 2022 Aspire had a negative working capital of £4.3 million, total assets of £14.5 million and a tangible net worth of £560,000. We understand that the company has a debt pile in the region of £8 million and needs an injection of between two and three million to restructure its financial position.



Two more acquisitions from Coopers

Canadian rental company Cooper Equipment Rentals has acquired Warner Rentals in British Columbia and Scotty's Rentals and Landscaping of Alberta, adding to its network in western Canada. Warner Rentals was established in 1975 by Ralph Warner and operates from five locations. Founded in 2007, Scotty's is based in Rock View County, Alberta and owned by Peter Jensen.



Simplex acquires Skytec Rentals

Canadian rental company Location d'outils Simplex/Simplex Equipment Rental, has acquired Skytec Rentals of Hamilton, Ontario, the first step in an expansion programme into Ontario. Simplex is based in Quebec City and runs 34 branches in the province, with around 550 employees, with a substantial fleet of booms, scissor lifts and telehandlers.



MANITOU'S NEW SHIPPING FACILITY

Manitou has opened a new 2,500 square metre, €3.7 million final inspection facility complete with eight integrated loading docks for machines it manufactures at its plant in Ancenis, France. The facility includes more than 1,300 square metres of rooftop solar panels and is staffed by 30 employees with the capacity to ship around 50 machines a day.

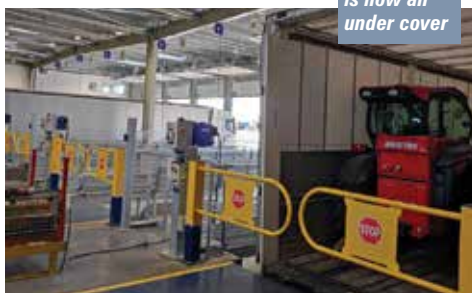
The investment is part of the company's project to redevelop its French plants, improving working conditions for employees and suppliers, as well as productivity. The loading docks are all completely undercover, making loading of delivery trucks safer and more efficient.



The new building



The loading is now all under cover



DISRUPTER GOES TRADITIONAL

Hoogwerkt, the Dutch powered access rental company that entered the market in 2018, is changing its strategy to become a classic 'delivery only' rental company.

Hoogwerkt was established with an all lithium electric powered fleet and the idea that customers would order their rental equipment online and collect the equipment from pick up locations - which at one point numbered 18 - with trailers provided if needed. The company 'evolved' its format over the years after struggling with its disruption plan but is now shifting to an all delivery model based on five hubs across the Netherlands.

Founder and managing director Arnold Grootveld said: "In order to offer quality and support our customers as much as possible, we are switching to delivery only. We always operate on the basis of the right machines in the right place. But when a customer picks up their order, you don't always have complete certainty about that."

As part of the transition the company will sell off surplus machines and reinvest the funds raised. The used machines will be sold through the auction websites of Troostwijk Auctions and Onlineveilingmeester.nl.



A Hoogwerkt hub

WE ARE TECHNO



TECHNO
RANGE

- ▶ A much more powerful control unit
- ▶ Increased speed and data processing capacity
- ▶ New remote control interfaces and functions
- ▶ X-Design profile of the secondary arm
- ▶ An exponential increase in performance

FASSI
LEADER IN INNOVATION

VISIT US AT:

GIS 9th edition

THE LIFTING, INDUSTRIAL & PORT HANDLING
AND HEAVY TRANSPORT SHOW
Piacenza (Italy), 5-7 October 2023

▶ External Area
Stand: N143-O153
Stand: T11

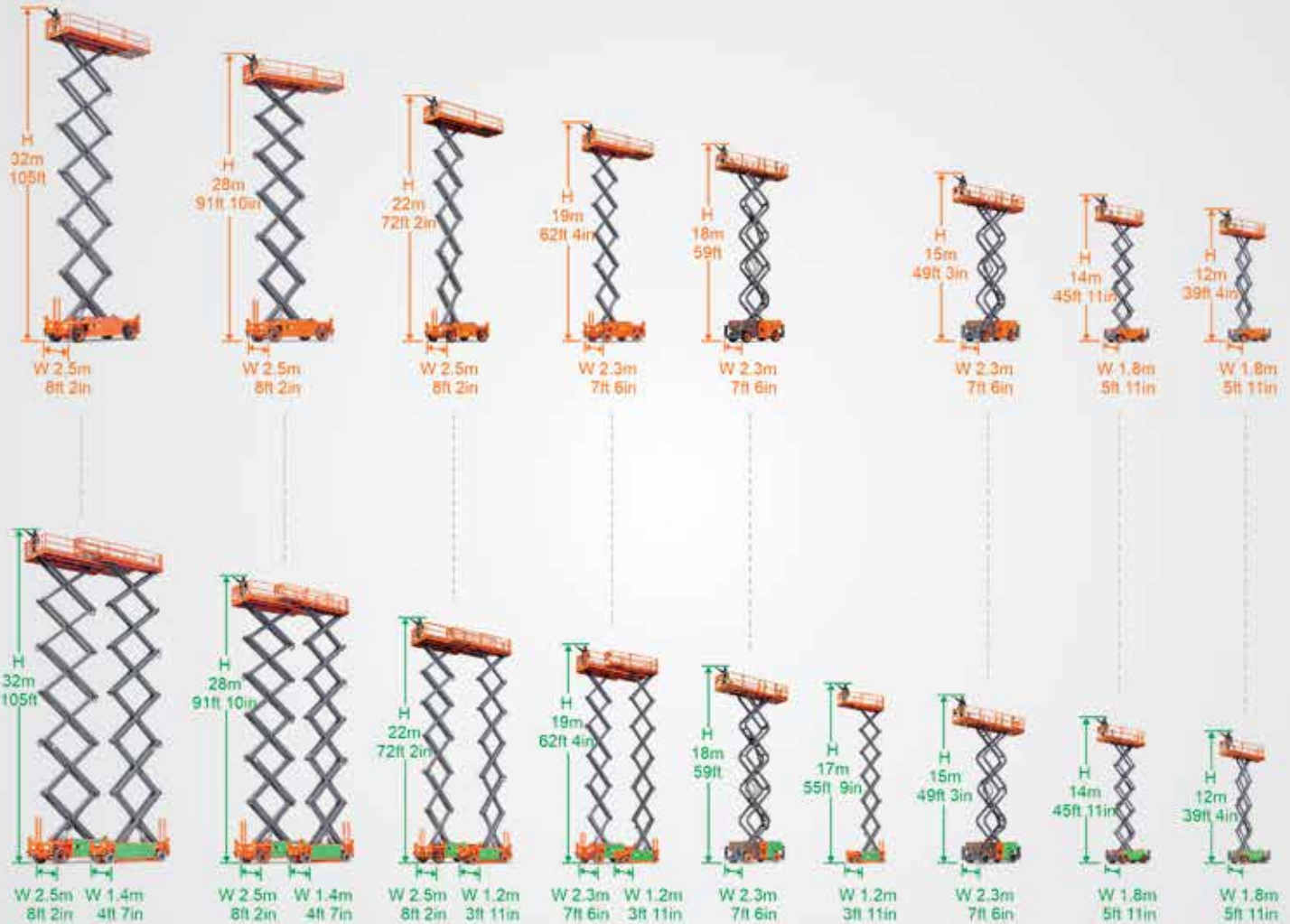
- INNOVATION
- VERSATILITY
- SAFETY
- CONTROL
- PRECISION
- EFFICIENCY

www.fassi.com





Heavy Loading
363kg - 1000kg
800lb - 2204lb



Large Scissor Lifts Series

ZHEJIANG DINGLI MACHINERY CO.,LTD.

ADD:188 Qihang Road, Leidian Town, Deqing, Zhejiang, P.R.C

TEL:+86-572-8681688

Phone:+86-13806523131 Susan Huang

E-Mail:export@cndingli.com

Https://en.cndingli.com



NEWS HIGHLIGHTS

■ UK rental company **ABA Crane Hire** has taken a 180 tonne **Liebherr** LTM 1160-5.2 All Terrain crane

■ UK van mounted lift manufacturer **Aldercote** has appointed **Chris Hughes** as service manager



Chris
Hughes

■ The **mewp training centre** in the UK has been approved for IPAF CAP (Competent Assessed Person) training courses, becoming the only non-affiliated company to offer the course

■ US low level scissor lift manufacturer **Hy-Brid Lifts** has appointed **John Davis** as director of sales for the south central United States



John
Davis

■ The online crane rental platform **Mycrane** has secured further unspecified funding for its plans to disrupt the heavy lift/crane rental market

■ South African rental company **Marlboro Crane Hire** has taken delivery of an 80 tonne **Tadano** AC 4.080-1

■ UK rental company **Spence Crane Hire** celebrated its 40th anniversary with the delivery of a new **Liebherr** 150 tonne LTM 1150-5.3

■ Italian contractor **Edil Bonaccorso** has taken a 52 metre **Palazzani** Ragno XTJ 52+

■ **Dick Koberg**, founder of **Dica** outrigger mats, has died



Dick
Koberg

■ Italian rental and roadside recovery company **Fratelli Zallocco** has taken three **Multitel** articulated truck mounted platforms

■ German crane rental company **Ulferts & Wittrock** has taken a **Liebherr** LTM 1650-8.1



Danny
Williams

■ **Foster Cranes** has appointed **Danny Williams** as sales and marketing director

■ The **Access Alliance** - UK association of independently owned rental companies - visited **Haulotte** HQ in France last month

■ Italian low level work platform manufacturer **Gromet** has appointed **Everest** as the distributor for **Axolift** low level lifts in France

■ **Rita Barnes**, the wife of crane industry veteran **Barry Barnes** of Demag/Terex, has died



Rita
Barnes

■ **Gerken** has added 100 **JLG/Power Towers** Ecolift and Pecolifts to its rental fleet

■ German crane rental company **Weiland Kran & Transport** has taken a **Tadano** AC 2.040-1

■ **Platform Basket** has appointed **Nexa Global Infra Solutions** and its owner **Anirban Ghoshas** its sales agent for India, Nepal, Bangladesh, Sri Lanka and Bhutan

■ **Unic** master distributor for Europe, **GGR**, has appointed **Liffey Crane Hire** of Dublin as its dealer in Ireland

■ **Hüffermann Krandienst** has taken 30 new **Böcker** trailer cranes mostly AHK 30 and AHK 36

■ **Manitou** has opened a new final inspection facility compete with eight built in loading docks at its plant in **Ancenis**, France

■ Italian spider lift manufacturer **Easy Lift** has appointed **Ertek Cam** as its distributor for Turkey

■ **Konecranes** is to supply container handling equipment for a new terminal in Copenhagen

■ UK crane rental/lift planner **AnR Specialists** has taken a **Böcker** AK46/6000

■ UK heavy lift and rigging company **Osprey** has ordered a 650 tonne **Tadano** CC 38.650-1

■ Telehandler manufacturer **Bobcat** has appointed **Gary Hornbacher** as president for Europe, Middle East and Africa



Gary
Hornbacher

■ South Africa's **Access World** has ordered four **Kalmar** Eco reachstackers and two 'Essential' empty container handlers

■ UK load carrier manufacturer **Tracked Carriers** has appointed sales and rental company **Thovo** as its distributor for Sweden

■ UK aerial lift rental company **AFI** has taken 100 **Zoomlion** booms and scissors

■ **Baldwins Crane Hire** of the UK has purchased six more cranes as part of its strategic fleet investment programme

■ German aluminium truck and trailer crane and hoist manufacturer, **Böcker** has celebrated its 65th anniversary.

■ Crane sales company **Foster Cranes** has appointed **Andy Cahill** as sales manager



Andy
Cahill

■ **Dean Hobbs** of HBS Electrical Services has established a new associated company - **HBS Access**.

■ **Magni Telescopic Handlers** has appointed **Taylor Machine Works** as dealer for Mississippi, western Arkansas and parts of Louisiana

■ **Azimut Construction** has taken a **Potain** MCT 275 flat top tower crane

■ Brazil's **Guindastes Centro Oeste** has taken the first 230t **Liebherr** LTM 1230-5.1 in the country

■ Three of **Mammoet's** lift ring cranes are currently working on energy projects in **India**

■ **LGMG** has relocated its North American headquarters to a brand new facility in **Dallas, Texas**

■ UK rental company **Charles Wilson** has acquired **MTS Plant Hire** of Wakefield, West Yorkshire

■ **Snorkel** and **Xtreme Manufacturing** chief executive **Matthew Elvin** has stepped down and left the company, **Cory Rosencranse** has taken over.



Matthew
Elvin



Cory
Rosencranse

■ **HSS Ireland** has taken delivery of 100, 19ft **Genie** GS-1932 E-Drive scissor lifts

■ Italian investor **Consilium Private Equity** fund has acquired a majority stake in Italian aerial lift and fire rescue platform manufacturer **Cela**

■ UK rental company **Speedy** has placed a £9 million order for the new **Niftylift** hydrogen powered booms lifts and agreed a three year UK exclusivity deal

■ Dutch international rental group **Boels** has ordered 70 truck mounted lifts from **Multitel Pagliero**

■ Chinese manufacturer **LGMG** has launched the SR1623E/SR5390E battery powered Rough Terrain scissor lift

■ **Pete Smith Crane Rental & Rigging** of Toronto has taken delivery of the first **Tadano** AC 4.080-1 to arrive in Canada

■ **Versalift UK** has gained **Ford Pro Converter** certification

■ Spanish company **Grúas Alhambra** has taken the first 300 tonne **Liebherr** LTM 1300-6.3 All Terrain on the Iberian Peninsula

■ Australian rental company **United Access and Forklift Solutions** has taken delivery of three 133ft **Haulotte** HT43RTJ Pros telescopic boom lifts

■ UK rental group **HirePro Holdings** has acquired **Upward Powered Access** from **Paul Johnson** and **Tim Ward** in a deal brokered by **The Hire Exchange**

■ **CPL** - the UK subsidiary of **Klubb** - has obtained European Type Approvals for its Ford Transit van mounted work platforms

■ German international rental company **Mateco** has appointed **Alexander Bradfisch** as chief executive



Alexander
Bradfisch

See www.Vertikal.net news archive for full versions of all these stories