

LIQUIDATION FOR HOLLAND LIFT

Dutch heavy duty scissor lift manufacturer Holland Lift is to cease production, close the company and liquidate its assets. A statement from the company owner Pro-Delta Investments - which also owns crane company Hovago and aerial lift rental group Riwal - said: "After careful consideration, Holland Lift International B.V. and its shareholder, have resolved to terminate the activities and to proceed with the liquidation of the company. Holland Lift, known for its high-quality aerial work platforms, has been facing several challenges in the past few years, among which are substantial increases in steel prices and overall increasing costs, severe supply chain issues due to Covid and the war in the Ukraine and a fierce competition of low-price newcomers."

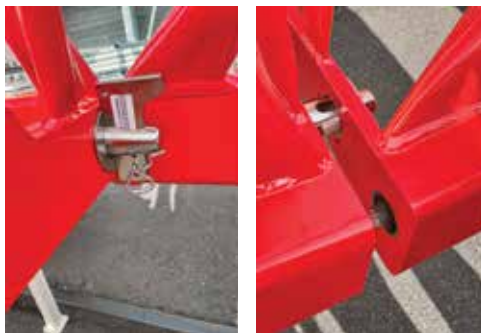
"Despite a staff reorganisation in 2021 and heavy investments, which resulted in the launch of new designs and products and other measures taken, it proved not feasible to ensure long-term viability for the company. Holland Lift International B.V. employs around 70 employees in the Netherlands and Germany through its Servi-Tec GmbH operation."

Holland Lift was established at the end of 1983 and has had a chequered history being acquired by German group MBB, Terex, Stoneham Equipment, a management buyout and its current owner ProDelta in 2013.



INNOVATIVE NEW WOLFF

Wolffkran has launched the Wolff 6523, a new 224 tonne/metre flat top tower crane with a maximum capacity of 12.5 tonnes in four falls at a 21.5 metre radius or 8.5 tonnes on two falls at 30 metres. The jib can be extended from 30 to 65 metres in 2.5 metre increments. Jib tip capacity at 65 metres is 2.3 tonnes or 2.5 tonnes with the 'Wolff Boost' function activated. The crane comes with a combined UV 20/TV 20 tower connection allowing it to be mounted on either a two metre square tower to a freestanding height of 69 metres, or 106 metres on a 2.9 metre tower.



The new 6523 is based on Wolffkran's bestselling 6031 Clear but has a new jib design that features a new bottom chord connection between sections, including the rope swivel traverse, with a front mounted mandrel and wedge connection. In the top chord, the pins are now inserted into pear shaped holes, which leads to easier assembly without a hammer. Smoother jib section transitions, and lateral guide rollers on the trolleys allow them to run more steadily and smoothly along the jib, making it easier to finely position the load.

This is also the first crane to feature Wolff's optional new High Speed Positioning System (HiSPS), which takes data from sensors on the trolley and the hook block to eliminate load swing. The crane is equipped with a 45kW hoist and can be specified with Wolff's new plastic coated fibre rope - 'ChaRope'.

FOUR MORE NEW VALLAS

Manitex Valla will unveil two new 16 tonne and two new 18 tonne all-electric pick & carry cranes at GIS in Piacenza next month.

The four models are the V160R and V180R pedestrian controlled models with radio remote controllers and the V160RC and V180RC cranes, which are structurally similar but with operator cabs. They fit into the range between the new 13 tonne V130RX and current 21 tonne V210R. The new cranes will join the new 4.6 tonne V46R and the 13 tonne V130RX, announced in July but which will also debut at GIS.



NEW 56FT DINGLI HD SCISSOR LIFT

Chinese manufacturer Dingli has launched a new heavy duty 56ft electric Rough Terrain scissor lift, the JCPT1923DCL, adding to its larger scissor lift range with platform heights of 66ft, 86ft and 99ft.

The JCPT1923DCL has a maximum working height of 19 metres with a maximum platform capacity of 680kg - on either the main deck or on the single two metre extension - and is drivable at full height. Overall width is 2.29 metres, length 4.46 metres and stowed height 2.75 metres with guardrails folded. The overall weight is 10,870kg. Four wheel drive and steer are standard, along with levelling jacks with single button automatic levelling. Power is provided by a 48 volt/450Ah battery pack supplying the four AC electric wheel motors, and two AC electric hydraulic pump motors.



NEW 11M MAST BOOM

Chinese manufacturer Reeslift has launched its first mast boom - the AMWP11.2-8100 - which uses a classic six section steel box-type mast topped by a jib with 130 degrees of articulation. Maximum working height is 11.2 metres while the maximum outreach is three metres at an up & over height of 7.89 metres. Maximum unrestricted platform capacity is 200kg and slew is 345 degrees.

When stowed the machine has an overall length of 2.53 metres, an overall width of one metre and is just under two metres high. Overall weight is 2,950kg. The unit features automatic pothole protection, AC direct wheel drive and hydraulic pump motor and can drive at full height. Standard equipment includes non-marking tyres, a load sense system and drive enabled safety switch, while the basic hydraulic system is already prepared for explosion proofing.



SKYJACK GOES 'E'

Skyjack has launch a new 'E' range of slab electric scissor lifts, replacing the hydraulic wheel drive with direct AC brushless electric wheel motors which eliminate around 60 percent of hydraulic fittings and reduce the risk of leaks, while boosting battery life between recharges by at least 20 percent or more for extended drive applications.

The drive system layout remains unchanged with front wheel drive on the compact models and rear wheel drive on the larger models. Production has already started in Canada and will be rolled out across the company's other plants over the next 12 months.

Other changes include smoother constant torque drive, a more compact controller with new low battery warning light which is triggered when only around 10 percent of usable capacity remains which should provide around 10 to 15 full work cycles allowing the user to finish his work before putting the machine on charge.

The hydraulic pump drive motor remains the same, although the hydraulic system has changed, with a smaller tank and simplified manifold. The hydraulic tray has also been modified to contain all of the machine's oil in case of a catastrophic leak, such as a burst tank. The diagnostics control panel now faces out so that it can be seen and used without needing to open the swing-out machinery box. The emergency descent is now electronic with the switch located at the rear of the chassis as is the charging point - a Delta Q automatic multi voltage battery charger is standard - while AGM maintenance-free batteries are optional. There are a few other more minor improvements, but the structure and all of the accessories are unchanged.



DINGLI UPGRADES D SERIES BOOMS

Dingli is to upgrade its D Series articulated and telescopic boom lifts - introduced last October - to provide unrestricted platform capacities of 320kg. The D series uses a modular build concept with four working heights of 16, 18, 20 and 22 metres, and a choice of articulated or telescopic lift mechanisms - so eight models in total. Each model is available with three power options Electric, Hybrid - the Electric with a small generator - and pure Diesel, giving 24 variants in total.

Dingli has not confirmed the design changes required to achieve the additional capacity, but a quick look at the specification sheets suggests a little more weight has been added and possibly a few centimetres shaved off the outreach. The new models have now completed their test programmes and will shortly be ready to ship.



INDIAN PARTS CENTRE FOR MANITOU

French telehandler and aerial lift manufacturer Manitou has inaugurated a new 8,300 square metre parts and logistics centre in Greater Noida, on the southeast edge of New Delhi, in India.

Completed in less than a year, the new centre has the capability to ship 90,000 order lines a year when it reaches maximum capacity, with 40 employees working in shifts.



LARGER TT FROM LINK-BELT

Link-Belt has launched a new 110 tonne four axle truck crane with all wheel steer - the 120|TTLB - which tops out its 'Truck Terrain' line up. The new crane features a seven section boom providing 10 metres more main boom than the company's 110 tonne 120HT truck crane. The boom can be topped with a 10.7 to 17.7 metre bi-fold swingaway extension for a maximum tip height of just under 80 metres.

The all wheel steer chassis not only provides a tight turning radius, but also includes four steering modes - independent front, independent rear, combination and crab. As with the regular truck cranes, the 120|TTLB features air-ride suspension and disc brakes. Power comes from a Cummins diesel, providing a maximum speed of up to 55mph/88kph. Unlike the 120HT the TTLB features a single width carrier cab rather than full width.



223FT BOOM LIFTS SHIPPED

Chinese manufacturer XCMG has shipped the first batch of the world's largest boom lifts, the 223ft XGS70K to Europe. The company says that a further 24 units are scheduled to be manufactured and shipped to Europe between now and mid-2024 - with more than half of them already sold. Two further units are being shipped to India.

The XGS70K has a five section telescopic boom, topped by a three section jib with 131 degrees of articulation, providing a working height of 69.6 metres and a maximum outreach of 32.5 metres with 230kg in the platform. The maximum platform capacity is 460kg at an outreach of 27 metres, while 300kg is possible at just less than 30 metres. Total weight is 35.4 tonnes.



WACKER NEUSON'S ELECTRIC TELEHANDLER

Wacker Neuson has launched the production version of its new electric sub compact telehandler - the TH412e. The machine is similar to the standard diesel powered TH412, offering a maximum lift height of 4.3 metres, with maximum capacity of 1,250kg. A 96V/18kWh lithium ion battery provides an uninterrupted operating time of more than three hours, while a 28kWh option offers five hours continuous operation.

A new battery management system constantly monitors the battery pack to maximise efficiency and safety and prevent deep discharges. When it comes to recharging, a 3kW on-board battery charger is standard with the option of a duplicate, the two combining to create 6kW for faster charging times.



SANY IN THE UK

Chinese heavy equipment manufacturer Sany has confirmed the opening of its UK operation with the appointment of Andrew Snow as UK/Ireland manager for crane products. Sany Cranes UK will operate out of the Sany/Putzmeister UK premises in Chesterfield, Derbyshire.



FIRST FUEL CELL BOOMS

The first full production versions of Niftylift's new 50ft HR17 H₂ Hydrogen-Electric boom are being delivered to Speedy Hire depots in the UK. They are part of an order for around 100 units which also includes the 43ft HR15 H₂ Hydrogen-Electric. The booms are the result of a two year development partnership between the two companies which has included field trials with key customers looking to improve their ESG (Environmental, Social and Governance) ratings or working in ultra-low emission areas.

The new models are based on the latest versions of the manufacturer's standard all-electric, two wheel drive boom lifts, with direct electric wheel motor drive and AGM maintenance free batteries with a lithium-ion battery option. The H₂ models are equipped with a hydrogen fuel cell - fed by a standard G20 hydrogen gas cylinder - which produces electricity to top up the battery pack when necessary. It is possible to set the system to constantly top up the batteries or only when the state of charge drops to a preset level.

As with the pure electric machines, the new lifts are said to be capable of four to five days of typical usage between recharges. For sites where there is no power, a single hydrogen cylinder should enable the machine to run for more than 12 working days before requiring a cylinder change.

Speedy has placed a £9 million order for 'sustainable access products' this year, including the 100 or so Niftylift Hydrogen-Electric boom lifts. The order will be repeated for at least two more years as part of a three year exclusivity deal, in which Speedy will be the only rental company in the UK to offer these new boom lifts.



ANOTHER NEW AWP PLANT FOR MANITOU

Manitou is to make a further €60 million investment in its recently expanded aerial work



platform operations in Gandé, France, just a few miles from its Ancenis headquarters. A new 20,000 square metre fabrication welding, paint and machining facility will be built in the 'Petit Tesseau' industrial zone of Candé, close to its two platform assembly operations. The investment is aimed at increasing production capacity and smoothing supply chain issues.

Up to 100 new staff will be employed with construction beginning in the new year and scheduled for completion in early 2026.

Sylvain Jaguelin, vice president of the Aerial Work Platform division, said: "Bringing this activity in-house will enable us to reduce the tensions that our supply chain can encounter during surges in activity, which are becoming more frequent in a very dynamic platform market."

TADANO SETTLES WITH EPA

Tadano has reached a settlement with the U.S. Environmental Protection Agency (EPA) and Department of Justice (DOJ) relating to alleged violations of the Transition Program for Equipment Manufacturers, under the U.S. Clean Air Act. It will pay a civil penalty of \$40 million and contribute \$3.2 million to a mitigation project to be carried out in Texas.

Tadano is not alone, some four years after it discovered an issue with its self-reporting, Manitowoc revealed it had found a similar breach for the years 2014 to 2017 and reserved \$14.9 million in its 2021 accounts but is now facing statutory penalties under the Clean Air Act that could be as high as \$174 million.



FIRST SINOBOOM AB46RJ DELIVERED

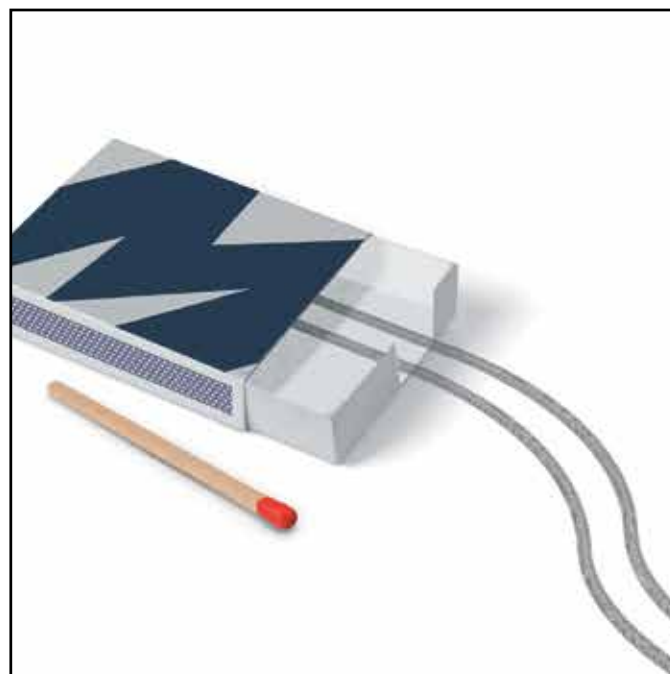
Singapore's LH Construction and Machine Leasing - part of the Lian Hup crane and aerial lift group - has received the first 154ft Sinoboom AB46RJ articulated boom in Southeast Asia.



The diesel powered AB46RJ has a working height of 48.6 metres, a maximum outreach of 26 metres with 275kg in the platform, or 24 metres with its maximum platform capacity of 455kg both at an up & over height of almost 19 metres. Total weight is 27,300kg.

FRANNA PLACES HISTORIC STATUE

AIS Vanguard used a Terex/Franma 14SB pick & carry crane to lift, carry and place the 1.5 tonne Bronze statue celebrating three famous Welsh rugby players, onto its plinth in Landsea Square, Mermaid Quay in Cardiff, Wales. Sculpted by Steve Winterburn the statue features Billy Boston, Clive Sullivan and Gus Risman - all of whom switched from the then amateur Rugby Union game to professional Rugby League, joining Wigan, Hull Kingston Rovers and Salford & Workington respectively, thus 'breaking the code' and making them pariahs and outcasts in their home country. The statue - which celebrates reconciliation - is also the first in Wales to feature non fictional black men.



New MXE **170** ^m

**We made it
pocket-sized**



**Lightweight,
compact,
technological,
fluid and also NICE.**

MULTITEL
SINCE 1911

WWW.MULTITELGROUP.COM

SUBSCRIBE TO THE
C&A NEWS
 PACKAGE AND GET
 THE INDUSTRY'S
 MOST WIDELY
 READ
 NEWS



Vertical.net   

EVERY ISSUE
 Delivered to your door
 — PLUS —
DIGITAL ISSUE
 Online

To get your **SUBSCRIPTION**
 up and running register
 online at [www.vertical.net](http://www.vertical.net/en/subscriptions)
 /en/subscriptions

YEARLY SUBSCRIPTION

£40.00/€60.00
 (UK and Ireland)
 €75.00 (Rest of Europe)
 \$110.00/£60.00 (Other regions)
 Payable by BACS transfer/
 credit card/cheque

**AN INDEPENDENT NEWS SERVICE COSTS
 MONEY AND NEEDS YOUR SUPPORT
 SUBSCRIBE TODAY!**

SPIDER LIFT TO SPIDER CRANE

Italian spider lift manufacturer Palazzani has introduced a new hydraulic winch attachment for its 25 metre TZX 250 articulated spider lift, quickly transforming it into a 250kg capacity spider crane which it can take to a height of 22.5 metres and out to a radius of seven metres at a height of seven metres. The winch comes with 32 metres of seven millimetre rope and a remote controller.

The Ragno TZX 250 features twin telescopic aluminium booms, has an overall width of 980mm, an overall height of 1.99 metres and is just over five metres long with the basket or hoist in place. Total weight is 2,650kg. Power options include diesel/AC motor or Lithium-ion phosphate battery pack, plus AC plug in motor.



NEW LIFTING SERVICE COMPANY



A new business - South East Lifting Services - has been established in the UK by crane rental veteran Graham Clark, who was previously operations director at Cadman Cranes, having joined the rental company as a young operator in early 1989.

The new company will offer a range of services including Appointed Person, lift supervisor, slinger/signaller and crane operators for mobile and spider cranes covering Kent, Sussex, South Essex, Hampshire and South East London.

**DINGLI UPGRADES 11M
 MAST BOOM**

Chinese aerial lift manufacturer Dingli has upgraded its 11.2 metre, mast boom with the introduction of the new **AMWP11.5-8200AC**.

The key differences include AC electric motor wheel drive compared to DC direct drive on the old machine. It also features maintenance free batteries. Other changes include a slightly larger platform, a full height platform entry gate and faster lift and lower speeds at 42 seconds up/38 seconds down. The forklift loading pockets have also been changed to dedicated brackets on the top of the chassis.



11 POTAINS FOR HS2

UK contractor and civil engineer Sir Robert McAlpine is to install seven more Potain MR 225A luffing jib tower cranes on the 21.6km Colne Viaduct section of the HS2 high speed rail line on the outskirts of London.

The new cranes join four other MR 225A cranes already working on the Viaduct being built by the Align joint venture with Bouygues Travaux Publics and Volker Fitzpatrick. All 11 cranes will be installed on 17 metre towers and rigged with 50 metre jibs and a jib tip capacity of 3.25 tonnes. They will be used to lift concrete formwork and precast sections 10 hours a day, five days a week. Once completed the Colne Viaduct will be the longest railway bridge in the UK.



PLATFORMERS' DAYS

The German access and lifting show Platformers' Days was held on 8th and 9th of September in Karlsruhe with more than 100 exhibitors and a reported 1,500 trade visitors. Full coverage on vertical.net



NATIONWIDE MOVES INTO TELEHANDLERS

Access rental company Nationwide Platforms - the UK division of France's Loxam - has made a "significant strategic investment" in four Manitou fixed frame telehandlers - the six metre MT625, 10 metre MT1033, 13.5 metre MT1440 along with the 17.5 metre MT1840.

All will be based at its Warrington branch in North West England. It has also purchased extra attachments and is targeting customers in construction, tree care and agriculture. If all goes well, it will add telehandlers to other depots across its network.



WE ARE TECHNO



F1450R-HXP



F1750RL-HXP



F1750R-HXP

TECHNO
RANGE

- ▶ A much more powerful control unit
- ▶ Increased speed and data processing capacity
- ▶ New remote control interfaces and functions
- ▶ X-Design profile of the secondary arm
- ▶ An exponential increase in performance

FASSI
LEADER IN INNOVATION

www.fassi.com



INNOVATION
VERSATILITY
SAFETY

CONTROL
PRECISION
EFFICIENCY

VISIT US AT:



9th edition
THE LIFTING, INDUSTRIAL & PORT HANDLING
AND HEAVY TRANSPORT SHOW
Piacenza (Italy), 5-7 October 2023

External Area
Stand: N143-O153
Stand: T11

FINANCIALS ROUND-UP

Haulotte achieved total first half revenues of €403.7 million, up 40% on the same period as last year. The revenues were made up as follows:
 New equipment sales: €356.9 million + 44%
 Services: €35.2 million + 16%
 Rental €11.6 million + 6%
 Pre-tax profit improved 9% to €2.67 million, held back by adverse currency factors.



Ashtead - owner of Sunbelt Rentals in the USA, Canada and the UK - achieved revenues to the end of July of \$2.7 billion, up 19% while pre-tax profits improved 11% to \$585 million. Capital expenditure for the quarter was 45% higher at \$1.13 billion. In the three months Ashtead made nine acquisitions - eight in the USA and one in Canada - which added a total of 40 new locations.

The results were made up as follows:

Sunbelt USA

Revenues: \$2.31 billion +22%

Profit: \$692 million +22%

Sunbelt Canada

Revenues: c\$213 million +21%

Profit: c\$40 million +5%

Sunbelt UK

Revenues: £177 million +2%

Profit: £15.8 million +38%



Forklift and warehouse automation company **Jungheinrich** is to acquire all the equity in German robotics company **Magazino** three years after it took a minority stake.



Hoist and mastclimber group **Alimak** reported first half revenues to the end of June of SK3.53 billion (€297 million) up 75.2% on last year, thanks to the Tractel acquisition. Pre-tax profits were 58% higher at SK344 million (€28.9 million).



US aerial lift manufacturer

Snorkel

achieved first half revenues to the end of June of \$94 million, up 6.2% on last year, higher margins turned last year's loss of \$8.9 million into a first half profit of \$1.01 million.



US rental company **Herc Rentals** has acquired **Quality Rentals** of Rosenberg, Texas. The company was established in 2002 by Nathan and Ed Faltysek and runs a fleet that includes aerial lifts - booms, scissor lifts and trailer lifts - along with telehandlers and general rental equipment.



German telehandler manufacturer **Wacker Neuson** saw revenues to the end of June increase 27.4% to €1.37 billion. Pre-tax profit leapt 92% to €172.9 million thanks to high prices, an easing supply chain and positive product and geographic sales mix.



Manitowoc Crane reported first half revenues of \$1.1 billion, up 16% on last year driven by strong sales in the Americas. Pre-tax profit more than doubled to \$35.7 million. With the strong second quarter and half year order book, the company has upped its full year sales forecast from \$2.1 to \$2.2 billion.



Herc Rentals saw first half revenues rise 27% to \$1.54 billion, while pre-tax profits increased just 8% to \$178 million. Capital expenditure on rental equipment was \$703 million, up 26% on last year. The company completed six acquisitions, adding 10 locations during the period and opened nine greenfield locations.



Genie/Terex AWP achieved revenues to the end of June of \$1.51 billion up 27% with both Genie and Terex Utilities contributing. Operating profit more than doubled to \$324 million. The full year revenue forecast has increased from \$2.7-\$2.8 billion to \$2.9 billion - 8% higher than its previous top end estimates.



JLG saw first half revenues increase 35% to \$2.52 billion. Aerial lift sales were \$1.27 billion +43%, Telehandler sales: \$732.2 million +36% and other revenues: \$522.4 million +21.5%. Operating profit for the period more than quadrupled to \$346.7 million. Its order book at \$4.37 billion is almost 10% higher than last year.



Maxim Crane Works achieved revenues to the end of June of \$507 million, up 17% on 2022. Its EBITDA increased 42% to \$122 million.



Palfinger achieved first half revenues of €1.21 billion up 16.9% on the same period in 2022. Pre-tax profit increased 28.5% to €96.5 million, up 28.5% but net debt grew 20% to €722.9 million.



United Rentals saw first half revenues rise almost 30% to \$6.84 billion and pre-tax profits jumped 25% to \$1.37 billion. Full year revenue forecasts have been increased to \$14 to \$14.3 billion with a capital expenditure of \$3.35 to \$3.55 billion.



Loxam's Brazilian subsidiary **Loxam Degraus** has acquired **A Geradora** - a national rental company that specialises in generator and lighting tower rental as well as aerial work platforms - mostly booms up to 130ft and scissor lifts up to 33ft.



Manitou's revenues to the end of June were €1.4 billion, up 33%, with new product sales increasing 39% to €1.2 billion, while services and solutions increased 5% to €200 million.



Konecranes posted first half revenues of €1.81 billion up 24% on 2022, while order intake increased 9.3% leaving the order book at a record €3.4 billion. Pre-tax profits were €149.7 million compared to €8.3 million this time last year.



Cargotec revenues increased 26% to €2.27 billion for the first half, while pre-tax profits tripled to €236.7 million. This included **Hiab** with revenues up 23% to €917 million, although order intake fell 25% to €755 million. Operating profit jumped 35% to €141.2 million. **Kalmar** revenues improved 30% to €1 billion, while operating profit quadrupled to €141.2 million.



FINANCIALS ROUND-UP CONTINUED

Asko Holding - the Turkish construction, agricultural and energy related equipment manufacturing group - has acquired a majority stake in US aerial lift manufacturer **Custom Equipment/Hy-Brid Lifts**. Asko also owns Turkish aerial lift manufacturer ELS and telehandler manufacturer MST. As part of Asko Holding, Hy-Brid will expand its product range by branding some of the group's other equipment, presumably for the North American market.



Aurora Energy Services has acquired Scottish lifting and inspection company NMS - Northern Marine Services. It will be rebranded Aurora NMS, while NMS founder and owner Alasdair Noble will continue to manage the company as lifting & marine services director. Established in 2017 NMS is based in Wick in the far North East of Scotland. Its services include crane rental, contract lift, rigging as well as lift planning and supervision. It also carries out inspection and testing of rigging and lifting equipment and is a member of the LEEA.



New UK lifting & engineering consultancy

Jordan Kelly, previously with Notus Heavy Lift Solutions and John Baker ex-sales director of Modulift, have launched a new lifting & engineering consultancy in the UK, which they are calling Ellevo Group. The business will be based in Warrington, North West England, and will focus on lift planning and management, heavy lift & transport consultancy, and a range of operations and engineering services including testing and inspections on an International basis. Kelly is managing director with Baker commercial director.



John Baker



Jordan Kelly

Aspire administration and acquisition

UK access rental company Aspire/LTS appointed an administrator in August and then agreed a pre-pack deal with London based 'The Tool Hire Centre' part of Contractors Plant Hire (Reading) which are owned and managed by Jonathan 'Jon' Stevens and Bob Overy. They acquired the Aspire assets through a dormant company X-Hire, which will be renamed. Aspire founder/manager Vinnie Rourke has also taken a stake in the new business.

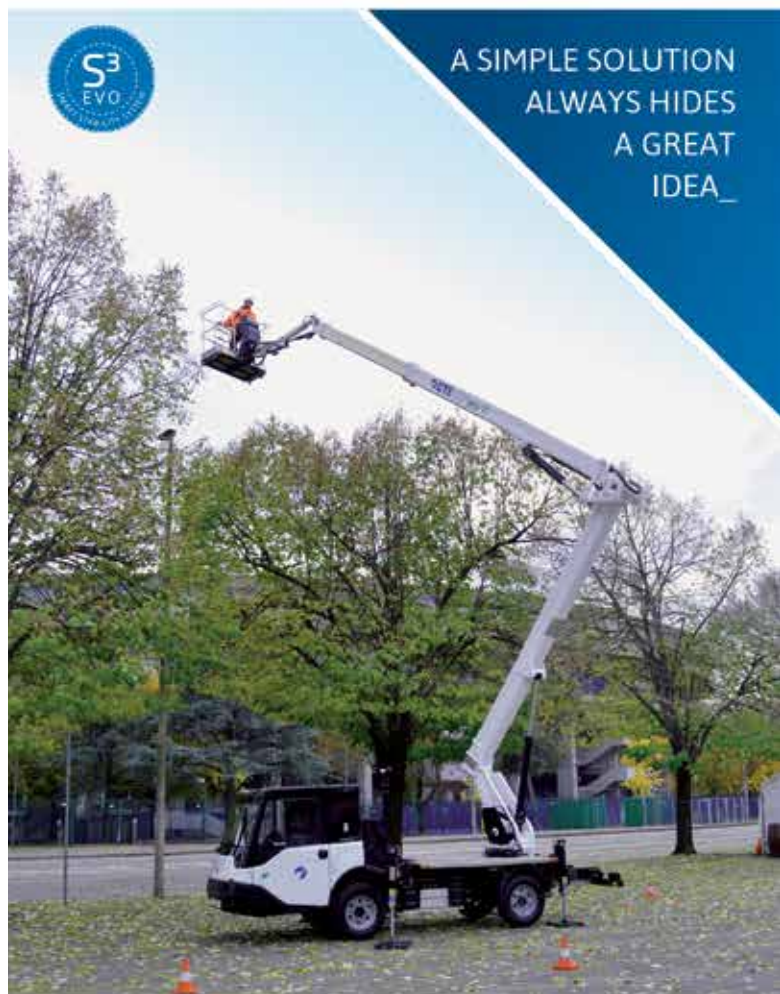


Kiloutou acquires Uka+Hauke

French international rental group Kiloutou has acquired German access and telehandler rental company Uka+Hauke Arbeitsbühnen, from owners Helen und Ralf Uka. Based in Sömmerda, North East of Erfurt and established in 1992, Uka+Hauke runs a fleet of truck mounted lifts, spider lifts, boom lifts, scissor lifts and telehandlers available from four locations.



A SIMPLE SOLUTION
ALWAYS HIDES
A GREAT
IDEA_



CTE MP 20 Ev

PERFORMANCE:
WORKING HEIGHT: 20 M
OUTREACH: 13 M
CAPACITY: MAX 250 KG
GVW: 3.5 T

A GREEN AND SILENT
REVOLUTION



100%
Electric

- ✓ Zero emission
- ✓ Zero noise
- ✓ Full productivity

www.ctelift.com



M0810JE / M0407TE

VERTICAL MAST LIFT



LOW-LEVEL ACCESS

THE BEST TOOL FOR CONGESTED AREAS

- Zero emissions and quiet operation
- Easy access to standard doorways
- Lightweight with low ground pressure
- Small turning radius and full-height drive



LINGONG HEAVY MACHINERY CO., LTD.

Address: No. 2676, Kejia Road, Jinan, Shandong, China
Email: sales@lmg.com.cn Tel: +86 531 6787 9283

LGMG Europe B.V.

Address: Donker Duyvisweg 301, 3316 BL Dordrecht, The Netherlands
Email: sales@lmg-europe.com Tel: +31 850 642 777

www.lmglifts.com



RELIABILITY IN ACTION

NEWS HIGHLIGHTS

- **Sinoboom** has appointed **Tomie Chan** as business development director for East and Southeast Asia
- **Welding Duebi** has taken the first 65t **Terex** TRT 65 RT in Italy
- **Sany** has appointed **Andrew Snow** as UK manager for crane products
- France's **Gil & Fils Leverage** has taken a **Palfinger** PK 165.002 TEC 7
- Brazil's **Milplan** has taken three 100t **Liebherr** cranes - two LRT 1100-2.1 and a 100t LTR 1100
- **Manitou** is to add a third plant to its aerial work platform operations in Candé, France
- **Magni Telescopic Handlers** has appointed **Jesco** as a dealer in New York state
- US outrigger mat manufacturer **DICA** has appointed **Ingo Schiller** as a strategic advisor
- UK cleaning specialist **OneFifty** has taken two new **Multitel** truck mounts
- Loader crane manufacturer **Atlas** has appointed **Joel Schiliro** as brand manager
- Germany's **Meister** has taken six all-electric **Hoeflon** spider cranes
- UK's **Travis Perkins** has ordered 400 new trucks with **Hiab** cranes
- **Time** has appointed **Laurent Leclerc** as director of export sales for Versalift, France Elévateur and Movex in Europe
- **EnerMech** has formed a 'strategic joint venture' with **PT. Titian Servis Indonesia** (TSI)
- **Bobcat's** telehandler plant in Pontchâteau, France celebrated 60 years
- Germany's **Scholpp** has taken a **Tadano** AC 4.080-1 and ordered three more
- Italian manufacturer **Almac** has appointed **Dan Robertson** as country manager for the UK
- **Tadano** has reached a \$43.2 million settlement with the U.S. EPA and Department of Justice
- South Africa's **Eazi Access** has donated a **JLG** 340AJ to the South African Airways Museum Society
- **Terex** has appointed **Seun Salami** as a non-executive director
- **Aurora Energy Services** has acquired **Northern Marine Services**
- The **Port of Savannah** Georgia has taken four electric **Konecranes** ship to shore cranes
- **XCMG** has shipped the first 223ft XGS70K telescopic boom lifts to Europe
- **Dale Asplund** - COO of United Rentals - is leaving the company, **Michael Durand** will take over
- UK's **Cadman Cranes** says it is on target to become net zero by 2025
- US **Davis Crane Service** has taken the first **Tadano** GT-1200XL-2 truck crane in the USA
- **Kalmar** is to acquire the rights for the **Lonestar** electric terminal tractors in the USA
- **Alimak** has appointed **Jens Holmberg** as vice president of its Industrial division



Tomie Chan



Joel Schiliro



Laurent Leclerc



Dan Robertson



Seun Salami



Dale Asplund



Michael Durand



Jens Holmberg

- Florida's **Select Crane Sales** has appointed **Phin Generelly** as Mid-Atlantic territory manager and **Dena Thomas** as business development manager
- Indian contractor **Afcons** purchased four **Potain** MCT 385s
- **J. Helaakoski** has taken the first **Sany** SCE 1350 A lattice crawler crane in Finland
- **Wilkinson Crane Rental** of Kansas has taken its third 350t **Manitowoc** MLC300
- **Kamphuis Hoogwerkers** has taken the first **Bluelift** ST31 Hybrid spider lift in the Netherlands
- UK **Plantool Hire Centres** is expanding its powered access fleet
- **EnerMech** has appointed **Rahul Dalela** as general manager operations, and **Chetan Mistry** head of finance in India
- UK's **Falcon Cranes** has expanded and updated its training centre
- **Tadano America** has appointed **Lennon Crane** as a distributor
- **Cargotec** has named **Pekka Ala-Pietilä** as **Kalmar** chairman, **Michel Van Roozendaal** has left
- Texas based **SitePro** has moved into **Tennessee** with a branch in Memphis
- **TVH** has promoted **Ryan Walker** to director of sales & services USA, pending the retirement of sales director **Cathy Diaz**
- France's **Mediaco** has taken a third 52m **Palazzani** Ragno XJT 52+ spider lift
- German company **Treffler** has taken a 350t **Liebherr** LTM 1350-6.1
- **Sinoboom** has signed a distribution agreement with **Faster Enterprise** for Thailand
- **Neil Stothard** is to retire as CEO of UK rental company **Vp**
- Germany's **Hözl Kran** has taken a 50t **Tadano** HK 4.050-1 truck mounted crane
- UK's **Summit Platforms** has installed defibrillators at its 10 depots
- Sweden's **Huddig** has named **Håkan Bäckström** CEO
- **Tadano America** has appointed **CraneWorks** as a dealer
- US **Dearborn Companies** has appointed **Patrick Clark** as director of business development
- Turkey's **Servet Coşkun Vinç** has taken a 120t **Liebherr** LTM 1120-4.1
- **Tele Radio** India has moved to new offices in Pune and appointed a new accounts executive **Nikhil Pawar**
- **Link-Belt** has promoted **Chris Perry** to training manager
- Italy's **M.D.M** has taken six **Multitel** truck mounted platforms
- **Reactive Rentals** has appointed **Charlie Martin** as national sales manager



Phin Generelly & Dena Thomas



Rahul Dalela



Chetan Mistry



Pekka Ala-Pietilä



Michel Van Roozendaal



Ryan Walker



Neil Stothard



Håkan Bäckström



Patrick Clark



Chris Perry

- UK's **Collett & Sons** has opened a new heavy lift warehouse
- **Harry Lorentsen** of Denmark's **Ommelift** has died
- **Kiloutou** has acquired German rental company **Uka + Hauke Arbeitsbühnen**
- US **MEC Aerial Work Platforms** has appointed **Jay Lucyk** as regional sales manager Canada
- **Mycrane USA** has appointed **Jason Travis** as vice president southwest, **Robert Baty** as southeast regional VP and **Andres Cuevas** as national account executive
- **Sinoboom** has appointed **Marcelo Yamane** as business development director for Brazil
- Germany's **Hack** has taken a 110t **Liebherr** LTM 1110-5.1
- Italy's **CMC** has added Dutch to its official informational languages
- German company **MSG Krandienst** has taken a 400t **Grove** GMK6400-1
- Germany's **BKL Baukran Logistik** has appointed **Johanna Lauter** as chief financial officer
- **Modulift** has appointed **Yeong Shin** as its distributor for Taiwan
- **Sims Crane & Equipment** of Florida has taken the first **Tadano** GT-800XL-2 truck crane
- **IPAF** has appointed **Tim Mo** as regional representative for China, Hong Kong, Macao, and Taiwan
- **Renta Norway** and **Follo Liftutelle** have taken **Easy Lift** spider lifts
- **Skyjack** has launched a new 'E' range of electric slab scissor lifts
- **Link-Belt Cranes** has appointed **Jacob 'Jake' Massman** as district service representative for the upper Mid-Mest and Central/Western Canada
- **Mobilift** Aachen has joined **System Lift**
- **Bravi** has appointed **Adriana Mihaylova** as area sales manager for Germany & Austria
- Germany's **Hüffermann** has acquired Hamburg crane rental company **Knaack**
- Canada's **The Erectors Hoisting and Rigging** has taken a 300t **Liebherr** LTM 1300-6.3
- French rental company **Kiloutou** has opened a new branch in **Frankfurt**, Germany
- UK company **Sparrow Crane Hire** has taken a six axle **Spierings** SK1265 AT6 eLift
- UK's **Quick Reach** has appointed **Nick Parham** as managing director (South)
- **Manitou** North America has appointed **Wright Implement** as dealer for telehandlers and forklifts
- **Sennebogen** has opened a new steel fabrication plant in **Hungary**
- UK's **Charles Wilson** has acquired the rental operations of **MTS Plant Hire**
- German aerial lift and spider crane veteran **Wolfgang Dahms** has died
- UK's **Warren Access** is celebrating 30 years in business



Jay Lucyk



Marcelo Yamane



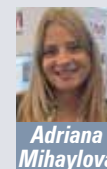
Johanna Lauter



Tim Mo



Jake Massman



Adriana Mihaylova



Nick Parham

See www.Vertikal.net news archive for full versions of all these stories