

TWO MORE TEREX RTs

Terex Rough Terrain Cranes has added the 100 tonne TRT 100 and the 60 tonne TRT 60 to its new TRT Series, following the introduction of the long boomed 80 tonne TRT 80L in June.

The TRT 100 is rated at 2.5 metres radius with 86.8 tonnes at three metres and features a 47 metre five section main boom with a fully extended capacity of 8.9 tonnes at a 12 metre radius. A nine to 17 metre bi-fold swingaway extension can be added for a maximum tip height of 66 metres. The 10 tonne counterweight can be self-installed and removed to reduce the overall weight of 53.25 tonnes. The stowed width is 3.17 metres with an overall length of 14.1 metres and an overall height of just under four metres.

The 60 tonne TRT 60 is rated at a 2.3 metre radius and manages 50 tonnes at three metres. It features a 42.5 metre five section main boom and can handle eight tonnes on the fully extended boom at a nine metres radius.

An eight to 15 metre bi-fold swingaway extension takes the maximum tip height to 60 metres with up to 40 degrees of offset.

The key change on both models is new technology. They are the first Terex RTs with the 'Idealift' variable asymmetric outrigger set up and monitoring with the crane automatically calculating a load chart for the actual outrigger set up. Power comes from a Cummins Stage V diesel, with a Stage III - Tier 3 option.



SINOBOOM UPGRADES RT SCISSORS

Sinoboom has upgraded four models in its Rough Terrain scissor lift range - the 43ft 1323RD and 1323RE and the 53ft 1623RD and 1623RE - two diesel the others electric.

The main changes are tweaks to the drive train that are said to deliver a 20 percent improvement in real life gradeability. The wheelbase has been extended a little to 2.84 metres while deep tread tyres are now standard. Overall weight is slightly lower and better distributed between axles, resulting in a 10 percent reduction in ground bearing pressures, while the levelling jacks have a slightly wider base. As with current machines platform capacity is 680kg, with maximum working heights of 15.1 and 18.2 metres respectively.

Other changes include a new roll out deck extension mechanism for the standard 6.5 metre extended platform, while the popular 7.4 metre super deck option remains available. The lower controls have been upgraded to an electric control box with improved wiring harness and simplified componentry while a small door provides greater protection.



NEW RECYCLING CRANE

Hiab has launched an 18 to 19 tonne/metre Jonsered iZ.18R HD crane for recycling applications. It comes with a choice of three total extension lengths - 8.6, 9.0 and 10 metres - with a rising articulated link topped by a three section telescopic boom. Maximum capacities range from 5,300kg at three metres on the short boom model to 3,950kg on the 10 metre boom, while at full reach they can manage 1,900kg at 8.3 metres and 1,400kg at 9.7 metres respectively.

The cranes are equipped with Hiab's SPACEvo control system, along with the Olsbergs Q200 valve, part of a new system of hydraulics, sensors and cables that the company says will provide long term durability for high frequency cycle duty work. The iZ.18R HD has been designed for a minimum of eight hour continuous daily work shifts, with an S3 classified structure.



NEW MODEL FROM SAFELIFT

Swedish low level aerial lift specialist Safelift has launched a new version of its locally built low level self-propelled mast type lift, the 10ft MA50-R.

As with the original MA50, the MA50-R has a working height of five metres, overall width of 760mm and an overall length of 1.16 metres. The platform dimensions are also the same at 530mm by 760mm with a capacity of 180kg. The MA50-R features a retractable guardrail system that allows the user to reduce the platform dimensions to 530mm x 550mm in order to reach through 600mm x 600mm false ceiling openings.



BUILDING IN EUROPE FOR EUROPE

Sinoboom is to start manufacturing European built booms and scissor lifts at its plant in Poznan, Poland. The facility is currently producing ANSI boom and scissor lifts for the USA, but European models will start being added to the mix in the new year, with North American production shifting to a new plant under construction in Mexico.

The Poznan plant has a capacity of around 10,000 units a year depending on product mix. While the catalyst for building US and now European machines at the plant was the threat of import tariffs, Sinoboom says the move fits well with its ambition to build machines local to where they are to be sold and used.

Over the past two years the facility has been building a local supply chain with non-Chinese content now approaching 70 percent in value terms, including pumps and control units from Germany, valves, electric motors and hydraulic motors from Italy, fabrications, wiring and hoses from Poland, scissor stacks and counterweights from India, batteries from Vietnam and generators from the USA. Booms, hydraulic cylinders and the control systems still come from Sinoboom in China. The plan is for most, if not all of the machines on its Bauma 2025 stand to be European built.

The company will also open a UK sales office/warehouse - Sinoboom UK - managed by Craig Rooke previously with CTE and has also recruited a new European sales manager - Rik Kiddle - who previously worked with Terex Finlay and JCB.



SPT LAUNCHES S7 CE VERSION

Chinese spider crane manufacturer SPT has launched a CE version of its new 2.98 tonne S7 spider crane. The crane features a three section telescopic luffing jib for a maximum tip height of just over 17 metres with a capacity of 600kg. With the boom at maximum elevation of 80 degrees the jib can luff down to horizontal with a jib tip capacity of 400kg, a radius of six metres and a hook height of just over 11 metres. Maximum radius is 14.5 metres with 100kg on the hook.

The overall width is 770mm extending to just over a metre for travel, overall length is 3.9 metres and overall height 1.95 metres. Total weight with jib is 2,900kg. Power comes from a Kubota diesel and single phase plug-in electric motor for working inside while a radio remote controller with large LCD colour display is standard.



LIFTING A BULLET TRAIN

Japanese lifting gear supplier Nakamura Industry has supplied Modulift spreader beams to handle Hitachi EMU3000 Bullet Train exports to Taiwan.

The solution uses two Mod 34 spreader beams with a 3.5 metre span to ensure that the train's weight is evenly distributed for loading in Japan and unloading at Hualien Port in Taiwan. A total of 50 trains with 12 carriages each will replace eight aging carriage trains.



SANY CRANES TARGETS GERMANY

Chinese crane and telehandler manufacturer Sany is to target the German, Swiss and Austrian mobile crane markets which it says are the most challenging and demanding crane markets in Europe.

The operation will be based at its existing facility in Bedburg, east of Cologne, where it will hold 'significant inventory of new cranes' for fast delivery, along with replacement parts and service support. Sany opened the facility in 2011 for its earthmoving equipment and now employs around 120 people in sales, service and product preparation roles. The 35 acre/14 hectare site has a production hall, paint shop, warehouse and offices as well as the Sany hotel.



NEW MAEDA ENTERS SERVICE

The first 2.8 tonne Maeda MK3053-C spider crane in Europe has been delivered to UK rental company Hird. The new crane features a five section main boom with a three section telescopic jib for a maximum tip height of 16.95 metres at which point it can handle 50kg. It can also take it out to the maximum radius of 14.5 metres.

The new crane completed its first job at the 13,000 seat First Direct Arena, West Yorkshire, where it lifted a steel LED screen support frame weighing 150kg to a height of 12 metres over a safety rail and onto a mezzanine deck. The crane's compact dimensions - 3.2 metres long, 780mm wide and 1.95 metres high - coupled with its reach, made it an ideal machine for the job, while its non-marking tracks avoided black scuff marks.



ROLL'S NEW 3,000T GANTRY

Dutch international heavy lift and transport company Roll Group has completed the first two lifts with its new RMG Modular Gantry Crane system. The lifts, carried out at a petrochemical facility in Cilegon, West Java, Indonesia both exceeded 1,000 tonnes.

The gantry was erected to a height of 97 metres - the maximum is 120 metres. A 1,250 tonne Demag CC6800-1 crawler crane was used as a tail-in crane for the largest tower component which had an overall weight of 1,060 tonnes. The system is able to operate without guy wires, minimising disruption on site. Once the Cilegon Project is complete, the gantry will head to the Middle East where it will remain for the next two years.



NEW LGMG BOOM LIFT

Chinese aerial lift manufacturer LGMG has launched a 60ft Rough Terrain articulated boom lift, the AR18JE. The new lift features a classic sigma type dual riser topped by a two section telescopic boom and articulating jib, providing a maximum working height of 20.12 metres. The maximum outreach is 10.9 metres with an unrestricted 260kg platform capacity at an up & over height of 7.7 metres, while the 350kg maximum platform capacity is available at up to eight metres outreach.

The AR18JE has an overall width of 2.5 metres with an overall transport length of 6.42 metres with the jib tucked under which raises the overall stowed height from 2.47 to 3.07 metres. The machine features a four wheel axle type drive system with oscillating axle, four wheel steer and 45 percent gradability. Power comes from an 80V lithium ion battery pack, while the overall weight is 8,150kg.

The new LGMG AR18JE



EWPA YELLOW CARD GOES DIGITAL

Australia's Elevating Work Platform Association - EWPA - has launched its new 'Digital EWPA Operator Licence - Yellow Card', a secure card that can be stored in a digital wallet.

The organisation has been providing aerial work platform training through its Yellow Card training programme since 1987, during which time it has trained well over 500,000 operators. Replacement cards and licence verification will continue to be available on the EWPA website. A digital version of its TSHA Gold Card for telehandlers is also available.



Digital Yellow Card Licence



Physical Yellow Card Licence

MORE EU ACCESS SUBSIDIARIES FOR ZOOMLION

Zoomlion is opening new European aerial work platform subsidiaries in Germany, Poland and Italy, joining its existing access operation in the Netherlands. Typically, each location will be based around a dedicated warehouse and workshop of around 20,000 square metres along with a showroom and offices. Each entity will hold a significant inventory of new machines and replacement parts.

The company also has plans to set up new subsidiaries in France, the UK, Belgium and Sweden along with production facilities as part of what it refers to as the 'localisation of R&D, production, sales, and services'. In 2023, Zoomlion's export revenues jumped by more than 79 percent to RMB17.9 billion (\$2.47 billion), or around 40 percent of total revenues.



SAFETY SWITCH ERROR KILLS FOUR

The coroner for the Bas-Saint-Laurent region of Quebec has issued his findings on a quadruple scissor lift fatality in Saint-Léandre, last August. Two couples - Kim Blouin, 24 and her partner Émerik Chénard, 27, along with his mother Jocelyne Bouchard, 53, and her partner Marco Roy, 60 - were in the fully raised platform of an ageing 50ft JLG 500RTS Rough Terrain scissor lift when it overturned.

According to the coroner a safety switch on the machine, borrowed from a neighbouring farm, had been tampered with so that the lift and drive functions were not disabled when the platform reached its maximum free on wheels height of 6.7 metres. As a result, the levelling jacks had not been deployed, and it was driveable at full height.

Coroner Jean-Pierre Chamberland said: "At such a height, without the stabilisers, it takes very few factors to cause the equipment to roll over. The malfunctioning of the oscillating axle, incorrect tyre pressures, the occupants moving to the same side of the platform, the sloped ground or a combination of these factors."



£3 MILLION FOR BOOM LIFT FATALITY

UK recycling company Veolia Environmental Services has been fined £3 million, plus £60,000 in costs, following a fatal incident involving a boom lift. On the 17th of October 2019 Stephen Picken and Mark Kumar were working as 'Top Men' for Veolia, dismantling a North Sea gas rig at an onshore facility in Great Yarmouth, part of a major decommissioning programme in the region.

At the time the two men were removing an overhanging skirt pile weighing in excess of 27 tonnes when it suddenly broke away from the rig and struck the Genie Z-135/70 boom lift they were using, throwing them around 12 to 14 metres to the ground. Stephen Picken died at the scene, while Mark Kumar suffered serious life changing injuries.

The investigation identified serious failings with the planning of the work and relevant risk assessments which did not adequately cover the planned works, while shortcomings in supervision were also identified.





SAFE AT HEIGHT

SIMPLE AT THE BASE

THE BRAVI FORMULA THAT LIFTS YOU UP.

Are you looking to work comfortably and hassle free? Choose Bravi: aerial platforms made in Italy and designed to last in time. With simple mechanics, easy maintenance and original spare parts available within 48h in just one click, Bravi takes you to the next level.

Hammerhead



bravi-platforms.com



JOIN US
STAND 107

LEONARDO HD MOBILE PLATFORM
 ⤴ Size: 760 mm x 1192 mm // 30 in x 47 in
 ⤴ Working Height: 4.9 mt // 16 ft
 ⤴ Load capacity: 180 kg // 397 lbs
 ⤴ Unit Weight (CE): 560 kg // 1234 lbs
 ⤴ Turning Radius: 0°

BRAVI
PLATFORMS

LEVEL UP



FIRST TOWER CRANE DIPLOMA

Potain has hosted and is supporting France's first tower crane erector diploma programme at its training academy in Saint Pierre de Chandieu on the South East side of Lyon. The diploma - organised by the country's rental and distributor association DLR - involves theoretical and hands on training for tower crane installers.

Students will receive a state recognised diploma after completing the 10 week theory and practical course combined with completion of additional assembly activities within their allotted companies as part of a work/study contract. The course will be an accepted diploma listed on the Parcoursup platform, where high school students can apply to various colleges. When the Diploma is fully recognised, funding will also be provided to help with training costs.



PALAZZANI PLATFORM SUPPORT OPTION

Palazzani has introduced a new compact basket support frame designed to improve the installation or removal of the platform when working in tight spaces or on uneven ground.

The support frame allows the spider lifts to be easily converted into a spider crane by replacing the platform with a 500kg hydraulic winch and then using it in crane mode.



NEW TOP 10 US RENTAL COMPANY

Two fast growing US rental companies - Synergy Equipment and Opifex Enterprises - are merging, creating one of the top 10 largest rental companies in the USA.

Tampa, Florida based Synergy Equipment was established in 2012 and covers the southeast region from 22 locations across Florida, Georgia and Alabama, while Texas based Opifex Enterprises was set up in 2018 and operates from three locations in Austin/Buda, San Antonio and Bryan/College Station. In 2022 it secured \$65 million of debt financing from a consortium led by Houston based GP Capital Partners.

The 'combined' venture has received equity capital from Synergy founder and chief executive JC Mas as well as private equity firm Avance Investment Management. The two rental companies offer a similar range



of products, including aerial work platforms and telehandlers, as well as earthmoving equipment. The two companies will continue to operate under their existing brands, with the merged business led by a five person management committee headed by Synergy chief executive JC Mas along with its chief operating officer Jeff Karter and chief financial officer Scott McPhail, working alongside Opifex chief executive Jay Vaughn and president Stefan Gresham.

BARNHART MOVES INTO NEW MEXICO

US based Barnhart Crane and Rigging has acquired crane, aerial lift and telehandler rental company Mountain States Crane of Albuquerque, New Mexico, its fifth acquisition this year and its first in New Mexico. All Mountain States' employees are expected to remain with the business as it becomes Barnhart Albuquerque.

Barnhart vice president, Chris Howe said: "Over the past 25 years, Mountain States Crane has earned a reputation for superior service, they are known in the industry for



their highly trained and experienced operators and riggers as well as a comprehensive and well maintained fleet. It covers an area with a 400 mile radius around Albuquerque in central New Mexico and complements our branch in Arizona as we expand further Southwest."

Earlier this year, Barnhart acquired White Crane of West Columbia in South Carolina, Baxter Crane

in Tupelo, Mississippi and Holland Crane of Forest City, Iowa, and in June made its first international move, with the purchase of NCSG in Canada. Memphis, Tennessee based Barnhart now operates from 59 locations providing operated crane rental, rigging services, outage planning, specialised solutions for component replacement, industrial storage and national project logistics.

AUCTION RAISES £41 MILLION



Equipment auctioneer Euro Auction's latest UK sale in Leeds this month, saw about 7,500 lots sold for a grand total of £41.2 million.

Some decent prices were achieved for both aerial work platforms and telehandlers. A selection supplied by Euro Auctions can be seen below.

Aerial work Platforms

Year	Model	Sale price
2018	Genie GS1932 Electric Scissor Lift	£3,800
2014	JLG 4069LE Electric Scissor Lift	£8,500
2018	Genie GS4390 4x4 Diesel Scissor Lift	£15,500
2018	Skyjack SJ9250 4x4 Diesel Scissor Lift	£15,500
2017	JLG 530LRT 4x4 Diesel Scissor Lift	£16,500
2018	Genie GS3369RT 4x4 Diesel Scissor Lift,	£14,500
2013	Genie Z-135 4x4 Diesel articulated Boom	£42,000
2019	Genie Z45/25J 4x4 Diesel Articulated Boom	£27,500
2017	Skyjack SJ45T 4x4 Diesel Articulated Boom	£20,000
2015	JLG 450AJ 4x4 Diesel Articulated Boom	£17,500
2015	JLG 450AJ 4x4 Diesel Articulated Boom	£19,000
2018	Manitou 200ATJ 4x4 Diesel Articulated Boom	£26,500
2018	Skyjack SJ85AJ 4x4 Diesel Articulated Boom	£29,500
2019	Skyjack SJ85AJ 4x4 Diesel Articulated Boom	£27,000

Telehandlers

Year	Model	Sale price
2020	JCB 540-200 Turbo Powershift	£52,000
2021	JCB 540-180 Hi Viz Turbo Powershift	£50,000
2019	JCB 540-180 Hi Viz Turbo Powershift	£39,000
2020	Manitou MT1840 Turbo	£37,500
2019	Manitou MT1840 Turbo	£33,000
2019	JCB 540-170 Turbo Powershift	£41,000
2015	JCB 540-170 Turbo Powershift	£35,500
2019	JCB 540-140 Hi Viz Turbo Powershift	£31,000
2017	JCB 540-140 Hi Viz Turbo Powershift	£23,500
2019	Manitou MT1440 Turbo	£24,000
2018	Manitou MT1440 Turbo	£23,500
2018	Bobcat T36120SL Turbo	£24,500
2019	JCB 535-125 Hi Viz Turbo Powershift	£24,500
2019	JCB 535-95 Turbo Powershift	£28,000

J2L ACQUIRES KRANLYFT



Swedish family investment company J2L Holding has acquired Kranlyft - the European master distributor for Meada spider and mini crawler cranes - from its private equity owners Storskogen Utveckling.

J2L Holding was set up in 2009 by chief executive Johan Lindh and chairman Louise Lindh, with the goal of building an industrial group that invests in a range of companies for the long term and helping them grow and develop. It has no centralised head office staff to interfere on a day to day basis, preferring to leave the running of the business to the management team, focusing more on the results, providing support and any advice or additional funding when needed.

Kranlyft chief executive Jurgen Vater said: "I am pleased that Kranlyft is now a part of J2L Holding, given their long term perspective and the stability they offer as owners. Our team looks forward to continuing to develop Kranlyft and create value for our customers, partners and owners."

Johan Lindh of J2L added: "We are very pleased to enter as new owners and look forward to working with management and staff, to continue to develop the business."

Kranlyft owners over the years

1963 - Founded by Bert Jonsson and Staffan Ferön

1980 - Cinderella

1983 - Kullenberg

1984 - Nordstjernen

1984 - MBO - 1

1989 - Componenta

1994 - Svedala/Componenta

2001 - Metso

2002 - MBO-2

2016 - Storskogen Utveckling

2024 - J2L



Louise and Johan Lindh

Step into the future

SPX328

Compact, powerful, and intuitive.

The mini crane that represents technological innovation designed for operators at any level. It provides a new experience of work that is intuitive, simple, and powerful, accessible to everyone. Designed for the future, #MadeForLiftingHeroes.

MAX LOAD
2800 kg

MAX HEIGHT
12,8 m

MAX RADIUS
10,4 m

POWER
Batteries

F
FOSTER CRANES
WORLD | SUPPORT | SERVICE

Vertical
days

September 11th - 12th 2024
Newark Showground
FOSTER CRANES
Outdoor Area - Stand n.125



info@jekko.it
www.jekko-cranes.com



FINANCIALS ROUND-UP

Genie/Terex AWP saw first half revenues rise 9.5% to \$1.65 billion, while operating profit improved 11.2% to \$242.1 million. However, order intake declined 33% to \$829 million. Full year forecasts are for revenues in the range of \$3.15 to \$3.25 billion. **Terex Group** revenues were flat at \$2.67 billion with a pre-tax profit of \$310.6 million, a 4.4% decline. Net debt at the end of June was 21% lower at \$346.3 million.



Palfinger saw first half revenues decline 3.5% to €1.17 billion, with growth in Europe, North America and Asia Pacific offset by declines in South America and CIS countries. Pre-tax profit fell 6% to €90.5 million, while net debt at the end of June was 5.6% higher at €763.3 million.



Manitou posted first half revenues of €1.41 billion marginally higher than last year, but order intake was halved to €1.43 billion. Operating profit however jumped 41.6% to €126.3 million driven by higher prices and improved efficiencies and a benefit from the acquisition of two Italian suppliers at the end of last year. Net debt was 4.2% higher at €424.7.



First half revenues at US based **United Rentals** increased 6% to \$7.26 billion driven by the Ahern acquisition. Pre-tax profit jumped 12% to \$1.53 billion. Capital expenditure in the first half was \$2.02 billion, marginally lower than last year.



US based **Herc Rentals** saw first half revenues improve 7.5% to \$1.65 billion, thanks to a 3.5% hike in rental with rates. Pre-tax profit slipped 2% to \$174 million. Capital expenditure declined more than 33% to \$46 million, pushing the average age of the fleet from 46 to 47 months. Net debt increased marginally to \$3.8 billion.

Herc also acquired **Otay Mesa Sales** with four locations in San Diego, California plus Phoenix and Yuma, Arizona for \$264 million.



JLG/Hinowa revenues increased 5% to \$2.64 billion, while operating profit jumped 32% to \$454.6 million due to higher prices, higher volumes and better customer/product mix. The order book declined 25% to \$3.26 billion. It is forecasting full year revenues of \$5.3 billion - up 6.5% on 2023.



Lift equipment supplier **Kito Crosby** is to acquire overhead crane and production line equipment manufacturer **eepos**. No details of the transaction have been released.

First half revenues at Brazilian rental company **Mills** improved 11% to BR 602.8 million (\$110.4 million). Pre-tax profit was BR 190.9 million (\$35 million), up 4.2% and capital expenditure BR 327.1 million (\$60 million) down 15.9%. The company also acquired industrial forklift rental company **JM Empilhadeiras** for BR310 million (\$56.8 million) in June.



Hiab saw first half revenues fall 8% to €847 million with order intake declining 3% to €734 million, leaving the order book 15% lower at €676 million, in line with long term trends. Operating profit was 4% lower at €137.4 million.



Two fast growing US rental companies - Tampa based **Synergy Equipment** and Texas based **Opifex Enterprises** - are merging to create the USA's ninth largest rental company.



Terex is to acquire waste and recycle business **Environmental Solutions Group** in a \$2 billion all cash deal from its owner, Dover.



Manitowoc Crane's first half revenues declined around 5% to \$1.06 billion due to exchange rates and slower tower and mobile crane sales. Order intake slipped 8.5% to \$982.5 million, leaving the order book 19% lower at \$836 million. Pre-tax profit was \$9.6 million compared to \$35.7 million a year ago. The company has cut full year forecasts by around 5%.



Snorkel has finally published its 2023 full year financials with total revenues up 11.8% to \$188.7 million, thanks to higher prices and volume. Pre-tax profit for the period was \$4.2 million, compared to a loss of \$16.5 million in 2022. However, a \$31.8 write back or 'forgiveness' boosted the bottom line in 2022 to \$15.3 million. The delay in publishing figures resulted in a Court forcing Snorkel to hand over its results to minority shareholder **Tanfield** more promptly.



Aberdeen, Scotland, based lifting gear rental and inspection company **First Integrated Solutions** has acquired UK lifting gear rental and service company **Tusk Lifting** from **Mammoet**. This is the second acquisition for First Integrated in 18 months, it purchased North Sea Compactors last year.



Italian loader crane manufacturer **Fassi Gru** has acquired German truck body manufacturer **Bavaria Fahrzeugbau**, which was created from the merger of Albert Fahrzeugbau, Zanner Fahrzeugbau, and Nüsslein Michael Fahrzeugaufbauten. The combined group employs around 130 people and produces a range of custom bodies for commercial and heavy vehicles from refrigerated vehicles to tipper trucks and loader cranes.



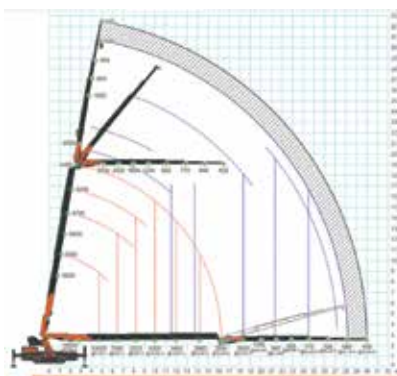
SECOND GENERATION JEKKO

Italian manufacturer Jekko has announced a second generation version of its 15.5 tonne JF545 articulated tracked crane, the JF545.2. It retains the same six section boom and seven section jib for a maximum tip height of 32.5 metres with a capacity of 450kg, which it can also handle at the maximum radius of 30 metres. With the boom fully elevated and the jib horizontal it can also lift 450kg at a radius of 16.5 metres and up & over height of 19 metres.

One of the key changes is a new Variable Speed Engine Management system, said to provide faster, smoother and more precise operation and reduced fuel consumption. The operator can choose from three working modes - Eco, Normal or Power - to match performance characteristics to the application. All engine information such as RPM, fuel levels and time left before refuelling are displayed on the crane's seven inch touch screen, waterproofed to IP66 levels, and the three section outriggers now have more set up positions.

The diesel engine is now equipped with a DPF filter with automatic management to minimise emissions, while the hydraulic system has been redesigned and now includes a dedicated electric powered hydraulic oil cooler. A three phase plug in electric motor is available for working indoors or noise/emission sensitive areas.

The stowed crane has an overall width of 1.84 metres, an overall height of 1.83 metres and is 5.83 metres long. Options include a low temperature pack with a pre-heating kit and work platform with a maximum working height of 32.2 metres and a platform capacity of 200kg.



STAFFORD TO BUILD STS CRANES

Irish American crane company Stafford Crane Group is designing and developing an all-new American built ship-to-shore (STS) port crane at its crane design centre in Milan, Italy. The move has been stimulated by announcement from President Biden's White house in May, announcing that the US government is to place a 25 percent tariff on imports of Chinese built Ship to Shore port cranes. There are currently no North American manufacturers of STS port cranes.



Full electric

Innovation,
performance,
technology

100% ELECTRIC TELEHANDLERS



2.6t | 6m
Battery life
up to 11 hours



4-4.5t | 14-17m
Battery life
up to 8 hours

-60%
Maintenance
costs



High savings and
sustainability

Maximum power,
low noise levels

Fast charging
times



faresin.com

Comprehensive Upgrade Fourteen Benefits

PERFORMANCE+



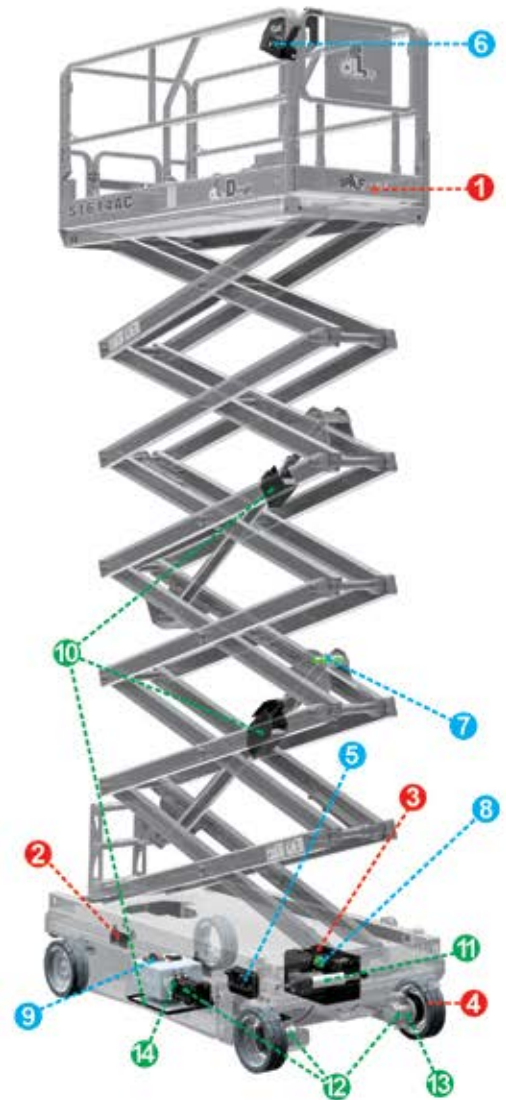
- 1 **Industry Leading Platform Capacity**
Maximum increase up to 45% compared to the original model
- 2 **Side and Rear Forklift Pockets**
Multiple choices for transport efficiency
- 3 **Lithium-Ion Battery with Long Duty Cycle and Fast Recharging**
High-density battery pack with five-year warranty
- 4 **High Strength Wear Resistant Tyres Compound**
Double the life compared to conventional tyres

RELIABILITY+

- 5 **Integrated Four-in-One Motor Controller**
40% reduction in connections and harnesses
- 6 **New Platform Control Box**
The durability of the touch pad is greatly improved, the new surface cleans easily, and the display is three times larger
- 7 **Reliable Load Sensing System**
Less affected by temperature and friction
- 8 **Scissor Angle Sensor Reliability Improvement**
Limit switches are reduced by 60%
- 9 **Hydraulic Oil Heater (Optional)**
Applicable for cold environment

ENVIRONMENT+

- 10 **Hydraulic Oil Leak Containment**
For applications with zero leak tolerance
- 11 **Electric Actuator Steering System**
No hydraulic oil, faster steering speed and 66% reduction in energy consumption
- 12 **Gravity Down Energy Recovery System**
Battery charge regeneration during platform descent
- 13 **Highest Efficiency Electric Drive System**
15% decrease in energy consumption and higher power density
- 14 **Highest Efficiency Electric Lift Pump System**
20% decrease in energy consumption and higher power density



AC+

	272kg	408kg	272kg	450kg	408kg	408kg	363kg	363kg
Working Height	8m	8m	10m	10m	12m	14m	16m	16m
Overall Width	0.7m	0.8m	0.8m	1.2m	1.2m	1.2m	1.2m	1.4m

AC+ Series Scissor Aerial Work Platform

ZHEJIANG DINGLI MACHINERY CO.,LTD.
 ADD:188 Qihang Road, Leidian Town, Deqing, Zhejiang, P.R.C
 TEL:+86-572-8681688
 Phone:+86-13806523131 Susan Huang
 E-Mail:export@cndingli.com
 Https://en.cndingli.com



SEE US AT
STAND 123-124



NEWS HIGHLIGHTS

■ **LGMG** has appointed **Carlo Forini** as telehandler sales director for western Europe, while **Gaetano Gallo** joins as telehandler service manager



Carlo Forini



Gaetano Gallo

■ German rental company **Cramer** has taken two 18m **Easylift** R180 spider lifts

■ Germany's **W.Schnitger** has taken a 2.5t **FB Gru** GA 727 D80 self-erecting tower crane

■ Sweden's **Kranpunkten** has taken 39 big **Dingli** electric boom and scissor lifts

■ Northern Ireland's **SDC Trailers** has purchased 11 **Sunward** scissor lifts for its production lines

■ **LGMG** North America has hired **David Sexton** as regional sales manager, Northeast

■ Access industry veteran **Brian Black** has died



Brian Black

■ UK based **SDM Fabrication** has taken a 60t **Liebherr** LTM 1060-3.1

■ **Herc Rentals** has acquired **Otay Mesa Sales** of California and Arizona

■ **Lee Sadler**, general manager of UK based **Sparrow Crane Hire** has died



Lee Sadler

■ Germany's **Gigalift** has taken a 31 metre **Bluelift** SA31 spider lift

■ **Geda** lifts and hoists are helping renovate the iconic Oslo City Hall

■ Germany's **Buller Krane** has taken a 200t **Grove** GMK5200-1

■ Crane operator **John Hoffpauir**, 55, died on August 5th at a wind farm incident in Wyoming



John Hoffpauir

■ UK based **Marsh Plant Hire** has taken seven new **Liebherr's** ranging from 60 to 110t

■ German rental association **System Lift** has confirmed **Eternity Technologies** as a battery supplier

■ US based **Engineered Rigging** has appointed **Jorn Ingebrigtsen** as sales and service rep

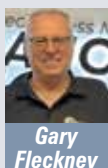


Jorn Ingebrigtsen

■ The **Port of Kingstown** in St.Vincent and the Grenadines has ordered a **Konecranes Gottwald** ESP.7 mobile harbour crane

■ UK arborist **Bluetree** has taken a 24m **Socage** 24D Speed truck mounted lift

■ **Gary Fleckney** has joined UK sales company **International Platforms**



Gary Fleckney

■ US contractor **Lenkin Enterprises** has taken two 40t MDT 809 M40's, the largest **Potain** flatops in the USA

■ UK rental company **Unity Operators** has taken a 39m **Teupen** Leo 39GT Plus spider lift.

■ **Teupen** has appointed **Andreas Bub** as sales manager Central/Eastern Germany



Andreas Bub

■ **Sinoboom** has appointed **Rik Kiddle** as European sales director and **Craig Rooke** as managing director of its new UK subsidiary



Rik Kiddle



Craig Rooke

■ UK based **Bryn Thomas** has taken four 80t **Grove** GMK4080L ATs

■ UK's **Nationwide Platforms** has reinstated customer service teams at its depots

■ **Sinoboom** has broken ground on its new manufacturing facility in Mexico

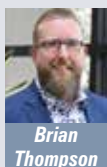
■ Spanish manufacturer **Ausa** has appointed **Turkauz1 Makine** as distributor for Turkey

■ UK based **APL** and **Elavation** have joined the **Access Alliance**

■ **MEC** has appointed **William Wallwin** and **Brian Thompson** as regional sales managers



William Wallwin



Brian Thompson

■ **Manitou** has appointed **Tuyet Nga (TNC)** as a dealer for **Gehl** in Vietnam

■ Spain's **Graías del Vallés** has taken two 60t **Grove** GMK3060L-1 ATs

■ Germany's **Schüttler** has taken an 18m **Ruthmann/Bluelift** SA18HB hybrid spider lift

■ **Terex** Rough Terrain Cranes has appointed **IPC Machines** as distributor for Kazakhstan

■ **Raimondi** has supplied five 14t LR213s to Dubai

■ UK rental company **John Sutch** has taken a 110t **Liebherr** LTM 1110-5.2

■ Spider crane manufacturer **Jekko** has appointed **Chen Li** as export manager Asia-Pacific



Chen Li

■ Italian aerial lift manufacturer **Cela** has relocated to its new plant in Castegnato

■ Italy's **Baldini** has taken a 250t GMK5250XL-1, its 14th **Grove**

■ UK based **Hudson Lifting** has opened in Bridgewater, Somerset

■ **Paul Dixon** of **Clements Plant & Access Hire** in the UK has celebrated 50 years with the company



Paul Dixon

■ Turkish contractor **Görgülü İnşaat** has taken a **Potain** MCT 185 tower crane

■ **Sarens** has gained a fourth consecutive RoSPA gold award

■ UK's **Hire Safe Solutions** has taken six 99ft **Haulotte** HA32 RTJ Pro boom lifts

■ Germany's **Gustav Seeland** has taken a 250t **Grove** GMK5250XL-1

■ Italy's **Danicar** has taken two new **Multitel**s, a 17m MXE 170 and 32m MJ320

■ **Mammoet** has been appointed exclusive heavy lift/haulage supplier for the new **Teeside Freeport** in the UK

■ **Peerless Chain** - part of **Kito Crosby** - has opened a new facility in Winona, Minnesota

■ Crane veteran **Frank Bardonaro** has been appointed CEO of **Brock group**

■ **CTE** has confirmed the new organisation for its UK subsidiary - **CTE UK**

■ UK based **City Lifting** has taken the first 100t **Liebherr** LTM 1100-5.3 in the UK

■ Germany's **Ulferts & Wittrock** has ordered nine **Liebherr** MK 88-4.1 and three MK 140-5.1 self-erecting mobile tower cranes

■ **KönningKrone** has taken its first **Liebherr** All Terrain, a 180t LTM 1160-5.2

■ China's **Liugong** has appointed **Glyn Goodwin** as UK aerial lift sales manager



Glyn Goodwin

■ Germany's **Zeppelin Rental** has taken its 1,000th **Skyjack** platform, a 26ft SJ4726 E

■ Saudi Arabia's **Al Askar** has taken 26 refurbished **Liebherr** All Terrains from 50t to 110t

■ The Jo'Burg team of South Africa's **Eazi Access** has raised R60,000 for **St Janes Chantel home for children**

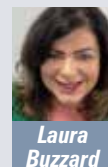
■ Germany's **Spohn + Burkhardt** has opened a facility in Connecticut, North America

■ Veteran UK based crane operator **Trevor Churchill** has died

■ US rental company **Reynolds** has taken a 200t **Tadano** GTC-2000 telescopic crawler crane

■ UK rental company **Star Platforms** has appointed two business development managers

- **Laura Buzzard** for the North West and **James Wakefield** for the South West - along with **Stuart McDermott** as IPAF trainer



Laura Buzzard



James Wakefield

■ **Kito Crosby** has promoted **Peter Hird** to commercial & business development lead for its Technology Solutions Division



Peter Hird

■ Australia's **United Forklift and Access Solutions** has taken its 5,000th **Haulotte** platform

■ France's **Foselev** has taken seven new **Grove** cranes

■ UK access rental veteran **Andy Pearson** is retiring



Andy Pearson

■ **JCB** has formed a partnership with the America's **Monster Jam** and produced its own monster truck - DIGatron

■ US based **Crane Service Inc.** has taken an 800t **Liebherr** LG 1800-1.0 wheeled lattice crane

■ Poland's **Karmax** has taken a second 100t **Grove** GMK4100L-2

■ Swiss rental company **Maltech** has taken seven 20m **Socage** Forste 20D Speed truck mounted lifts

■ US manufacturer **Caldwell Lifting Solutions** has appointed **Steve Mueller** as regional sales manager - Upper Midwest



Steve Mueller

■ UK based **Bennetts Cranes** has deployed the world's first **Potain** MR 309 in London

■ **PG Platforms** has taken the first 25m **Multitel** MJE250 truck mounted platform in the UK

■ **CMC Arbeitsbühnen** has appointed **Baywa Technik** as service partner in Bavaria and Baden-Württemberg

■ **Titan Aero** - now part of **Klubb** group - has appointed **Patrice Lamendour** as chief executive

■ **Terex** Self Erecting Cranes has appointed **Lift24** as its distributor in Poland.

See www.Vertikal.net news archive for full versions of all these stories