

cranes & access

A photograph of an elderly man with white hair, wearing a dark suit jacket, a light blue shirt, and a tie, looking down at a control panel on a red crane. The crane is a scissor lift or similar access equipment. The background is a clear blue sky. The man is wearing a lanyard with a badge around his neck. The crane has a black control panel with various buttons and a coiled cable. The text 'cranes & access' is overlaid in large white and red letters at the top. Below the title, there is a red box with white text: 'October 2024 Vol.26 issue 6' and 'www.vertikal.net'. At the bottom, there is a list of topics in large white text: 'TOP 30 RENTAL SURVEY', 'SPIDER CRANES', 'ARBORIST'S EQUIPMENT', and 'VERTIKAL DAYS REVIEW'. The crane has 'KG.180(t)' written on it.

October 2024 Vol.26 issue 6

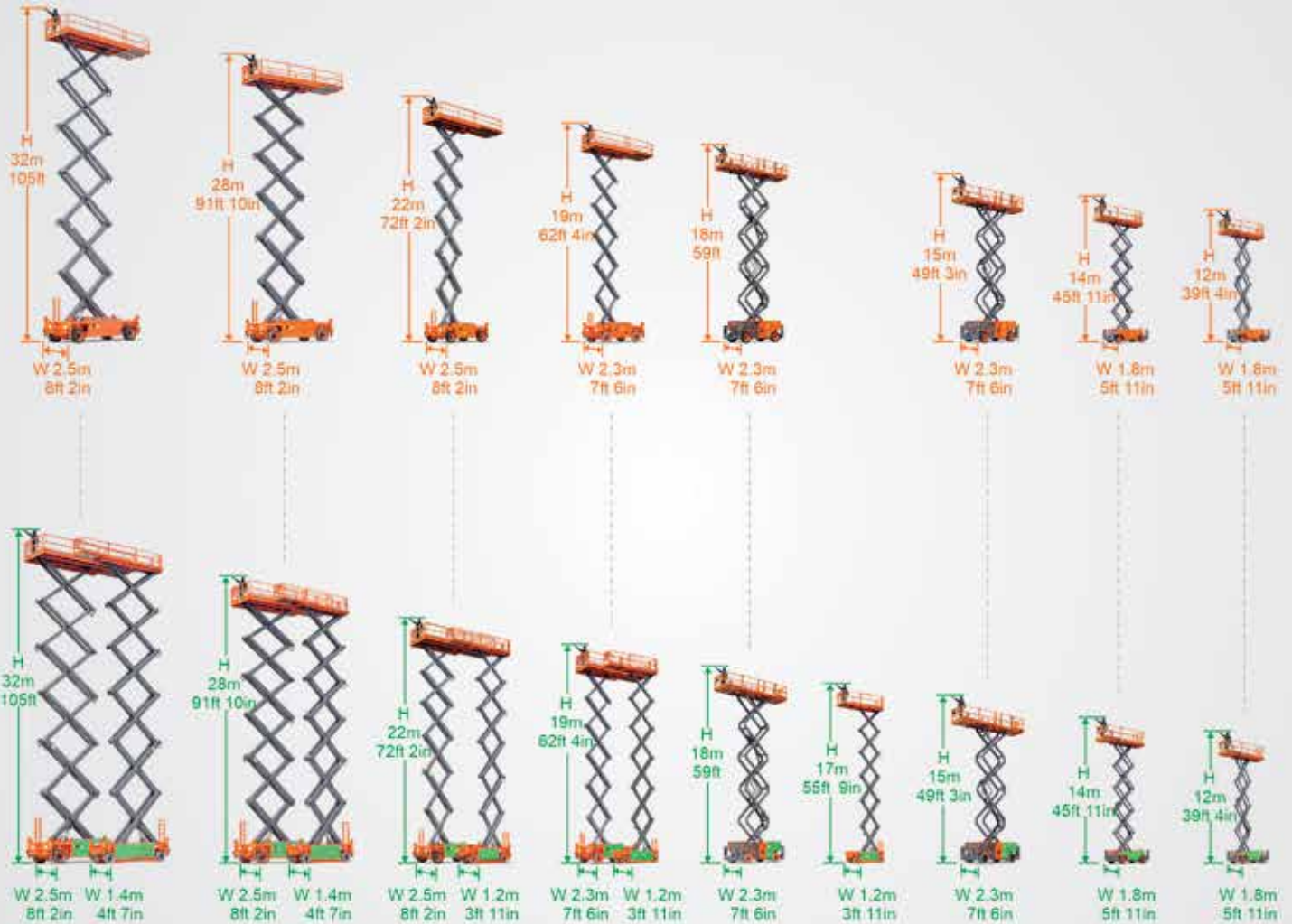
www.vertikal.net

**TOP 30
RENTAL SURVEY
SPIDER CRANES
ARBORIST'S EQUIPMENT
VERTIKAL DAYS REVIEW**

KG.180(t)



Heavy Loading
363kg - 1000kg
800lb - 2204lb



Large Scissor Lifts Series

ZHEJIANG DINGLI MACHINERY CO.,LTD.

ADD:188 Qihang Road, Leidian Town, Deqing, Zhejiang, P.R.C

TEL:+86-572-8681688

Phone:+86-13806523131 Susan Huang

E-Mail:export@cndingli.com

Https://en.cndingli.com





6

TOP 30 RENTAL COMPANIES		Total
		392 ▲
		131 ▲
		65 ▼
Bryant	Cranes	64 ▼
Bronzeshield Lifting		62 ▲
Baldwins		72 ▲
Kavanagh Crane Hire		59 ▲
Global Port Services		57 ▲
City Lifting		57 ▲
Davies Crane Hire		56 ▲



31



43



49



60

CONTENTS



COMMENT 5

NEWS 6

Grove upgrades to GMK 6450-1, XCMG breaks articulated boom record, New Potain Igo, JLG's first electric telehandler, New Link-Belt 200t AT, Liebherr's new MK 120-5.1 mobile Self-Erecting tower crane, Niftylift launches its first telescopic boom lift, Axolift upgrades the Elift 350, Bravi updates low level range, 60ft hybrid boom from XCMG, US customs investigates Sinoboom, LGMG extends mast lift, Liebherr updates luffers, Tadano strike sorted, JLG E scissor improvements, Hiab's new heavy duty crane, New CMC 20m spider lift, LGMG to go direct in UK & Ireland, financials round-up and News Highlights.

TOP 30 17

Our annual UK/Ireland Top 30 rental company fleet survey focuses on the leading crane, aerial lift and telehandler rental companies in the UK and Ireland highlighting how they have dealt with the last year in terms of fleet numbers and investment.

SPIDER CRANES 31

Over the past 20 years or so the spider crane market has transitioned from niche to mainstream as more manufacturers take interest in the growing market. Another emerging product sector is that of the tracked carrier crane. We take a look at some of the manufacturers and their products.

ACCESS EQUIPMENT FOR ARBORISTS 43

Last month's three day forestry and arb show - the APF Exhibition - held at Ragley Estate in Warwickshire, UK, was a good indicator of the access related trends and demands of the professional arborist. Here we review some of the equipment and have a brief round-up of the show.

VERTIKAL DAYS REVIEW 49

This year's Vertikal Days - held for the first time at Newark Showground in Nottinghamshire - was the largest in the show's 17 year history with more than 330 companies represented. Our pictorial review, we hope, will provide a flavour of the annual event.

SUSTAINABILITY 60

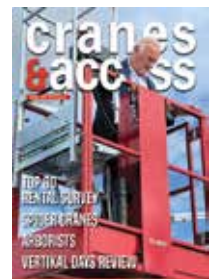
It seems that most companies working in the lifting related markets are looking at how they can operate more sustainably. We take a look at the ways some companies are reducing diesel consumption and reducing CO2 emissions with the use of modern batteries, HVO or hydrogen, or by specifying battery storage units to power tower cranes, mastclimbers and hoists.

REGULARS

- ALLMI FOCUS 63**
- IPAF FOCUS 65**
- TRAINING 67**
- CPA FOCUS 69**
- IN THE NEXT ISSUE 70**
- BOOKS & MODELS 71**
- LETTERS AND OBITUARIES 73**
- WHAT'S ON 77**
- ONLINE DIRECTORY 80**

ON THE COVER

Owner and founder of Bravi Platforms - Pierino Bravi - demonstrating a Leonardo HD mast lift at the Vertikal Days show.



IN THE NEXT ISSUE Scheduled for publication at the end of November, the next issue of Cranes & Access will include: Pick & carry and industrial cranes, Truck mounted lifts, Mastclimbers & hoists and Outrigger mats and temporary trackway. If you have any contributions or suggestions to make or are interested in advertising in this issue, please contact our editorial or sales teams.



Promoting the safe and effective use of powered access

GET YOUR PAL CARD ON YOUR PHONE!

WITH IPAF'S NEW APP



ePAL

www.ipaf.org/ePAL

- Free to download
- For all PAL Card holders
- Digital wallet for IPAF licences & qualifications
- Digital logbook
- Show & share your credentials
- Convenient
- Best practice tips & advice

DOWNLOAD NOW

Scan here or search your app store for 'ePAL'





Editorial

Mark Darwin - Editor
Imogen Campion - Assistant Editor
Leigh Sparrow

Associate Editors

Rüdiger Kopf (Freiburg)
Alexander Ochs (Freiburg)

Feature Editors

Nick Johnson
Saul Chernos

Sales & Customer Support

Clare Engelke
Pam Penny
Karlheinz Kopp

Production/Administration

Nicole Engesser

Editorial Data Specialist

Poppy Horne ph@vertikal.net

Subscriptions

Lee Sparrow

Publisher

Leigh Sparrow

Advertising Sales

UK based

Clare Engelke ce@vertikal.net
Tel: +44 (0)7989 970862
Pam Penny pp@vertikal.net
Tel: +44 (0)7917 155657

Germany based

Karlheinz Kopp khk@vertikal.net
Tel: +49 (0)761 89786615

The Vertikal Press

PO box 6998 Brackley NN13 5WY, UK
Tel: +44(0)8448 155900
Fax: +44(0)1295 768223
email: info@vertikal.net
web: www.vertikal.net

Vertikal Verlag

Hofackerstr. 95
D-79110 Freiburg
Germany
Tel: +49 (0)761 897 8660
Fax: +49 (0)761 897 86614
E-mail: info@vertikal.net



COMMENT

MANUFACTURED OR ASSEMBLED?

The US Customs and Border Protection agency (CBP) is investigating allegations that Chinese aerial lift manufacturer Sinoboom has been evading anti-dumping tariffs. This follows a complaint by the Coalition of American Manufacturers of Mobile Access Equipment which claims Sinoboom only carried out minor assembly work in Poland before shipping the 'Polish built' machines to the USA avoiding punitive tariffs on Chinese built platforms. In other words, disputing whether Sinoboom is really manufacturing in Poland or just assembling kits from China?

When we visited Sinoboom's plant in Poznan, Poland this summer we saw first-hand that the units now being built have a very high 'Non-Chinese' content, with European hydraulic and electrical components, scissor arms and counterweights from India, locally made fabrications and batteries from Vietnam. In fact, it is just about possible that some units might contain less Chinese content than some American built machines.

But it raises an interesting question of where a machine is really manufactured. Officially that seems to depend on the importing country's rules on local content percentages... not an easy calculation in the era of global supply chains.

Few manufacturers could ever claim that a product was 100 percent local. Components and materials come from specialist producers all over the world, and a German engine or Italian valve bank might include parts from numerous countries.

Telehandlers are an interesting example as they tend to use the same engines, transmissions and axles, while items such as hydraulic cylinders, wheels, tyres and electrical components are usually bought in. Some may come from suppliers local to the production facility, but some may have been shipped halfway around the globe. For

example, who would have thought that Ukraine was a major producer of wiring harnesses for German cranes or French telehandlers until Russia upset the supply chain, or that Western built construction equipment used so many Asian microchips?

Walk around a modern production facility and you rarely see any heavy machining or fabrication. Most plants simply put together electrical and hydraulic sub-assemblies, paint outsourced fabrications, buy in propriety componentry and then bolt them all altogether.

So how much content makes it local?

Many countries set the percentage of local content required to qualify as a country of origin. Sinoboom says that it is aiming for 75 percent non-Chinese content for its European and Mexican assembly plants. The EU rules of origin for countries it has free trade agreements are complex. Depending on the type of product, it requires at least 40 to 50 percent of local 'added value' as a percentage of the ex-factory price. The USA can be considerably higher, depending on the product and tariff ruling.

Conversely some Chinese built All Terrain cranes have a high level of international content, using high tech steel, engines, transmissions, axles, hydraulics and electric motors from European suppliers. It might be argued that they have enough content to claim European origin...but the point of final assembly remains a key factor no matter how minor the assembly work carried out or how high the local content value.

When it comes down to it, tariff investigations tend to be more political than scientific, aimed at protecting local manufacturers from imports. What they might be overlooking is that these days the rental companies and contractors that buy the equipment can represent a far larger and more critical part of the economy than the manufacturers.

Mark Darwin

Comment and feedback is most welcome via post, email or phone stating if we may publish them or not: editor@vertikal.net

RECORD BREAKING ARTICULATED BOOM

XCMG unveiled the world's largest articulated boom lift - the XGA48K - at Vertical Days this year. With a 48.7 metre working height it tops the long term record holder - the JLG 1500AJP - by 600mm.

The XGA48K has the same type of lift mechanism as the JLG - a three section telescopic riser, topped by a three section telescopic boom - and a 2.54 metre jib with 131 degrees of articulation. Maximum outreach is 24.5 metres - a metre more than the JLG - at an up & over height of 18.9 metres. Maximum platform capacity is 460kg, with an unrestricted capacity of 300kg.

How it compares with the JLG

	XCMG	JLG
Model number	XGA48K	1500AJP
Working height	48.7m	48.1m
Maximum outreach	24.5m	23.55m
Up & over clearance	18.9m	18.4m
Maximum platform capacity	460kg	450kg
Unrestricted platform capacity	300kg	270kg
Jib articulation	131°	125°
Jib rotation	N/A	130°
OA Width stowed	2.49m	2.5m
OA Width working	5.03m	5.0m
OA Length	14.94m	15.1m
OA Transport length - jib tucked	12.03m	12.1m
OA Height	3.2m	3.1m
Total weight	27,380kg	26,027kg



The XCMG is dimensionally similar to the JLG 1500 with an overall width of just under 2.5 metres stowed, opening to a working width of just over five metres. For transport the new boom has an overall height of 3.2 metres with an overall length of just over 12 metres with the jib tucked under and off to the side. Total weight of 27.4 tonnes. Four wheel drive and steer with oscillating axle are standard, while power comes from an EU Stage V Cummins diesel.

POTAIN'S NEW IGO

Potain has launched a new 1,800kg capacity self-erecting tower crane - the Igo M 24-19 - replacing the bestselling Igo M 14. The new crane has three jib configuration options with jib lengths of 12.3, 21 and 24 metres and under hook heights of up to 25.4 metres with the jib luffed to 20 degrees above horizontal. At the maximum 24 metre radius it has a capacity of 570kg at a height of 19 metres, while the maximum jib tip capacity is 730kg at 21 metres radius and a height of 18.8 metres.

The 1,800kg maximum capacity is achieved at a radius of 9.4 metres and a height of around 17.5 metres. The crane has a working footprint of 4.1 metres square, with 4,820kg of permanently installed counterweight.

When folded the overall transport length is 11.83 metres with an overall width of 2.46 metres and 12,390kg GVW. Maximum tow speed on the road is 80kph as an articulated truck, or 25kph with the drawbar.



GROVE UNVEILS GMK 6450-1

Grove has formally launched a capacity upgrade for its six axle 400 tonne GMK6400-1 All Terrain crane to the 450 tonne GMK6450-1. The new model retains most of the 400 tonner's specifications and its structure including the five section 60 metre main boom, to which 79 metres of luffing jib can be added for a 136 metre maximum tip height. Other features included Maxbase variable outrigger set up and the Grove Mega Wing Lift Superlift system.

The GMK6450-1 has been designed with wind power projects in mind with the ability to lift heavy loads at steep boom angles. It can operate in wind speeds of up to nine metres a second, with its full luffing jib installed.

Andreas Cremer, vice president product management said: "Over the past two years, we have seen a growing demand for a name change from our customer base. We reviewed the crane's performance, resulting in the GMK6450-1."



JLG'S FIRST ELECTRIC TELEHANDLER

JLG has launched the JLG E313 battery powered electric telehandler - a North American version of Ausa's 4 metre/1,600kg T164E. The Ausa machine was unveiled at the end of 2022 and is based on a diesel model which is also available in North America.

The ANSI version offers a 3,500lbs maximum lift capacity and a 13.1ft lift height at which point it can handle 1,800lbs. Maximum forward reach is 5.8ft with a capacity of 1,415lbs. The overall width is 4ft 10", overall height 6ft 8" and overall length without forks 10ft 1". Total weight is 7,340lbs.

The unit uses six 48V lithium ion batteries, powering a two speed transmission with two wheel drive and steer and a road speed of almost 10mph. The battery pack is good for four hours of continuous operation and can be recharged in two to three hours on a 220 volt outlet. JLG ClearSky Smart Fleet telematics are standard. JLG has been badging Ausa products since 2020 and recently completed the acquisition of the company.



NEW LINK-BELT 200 TONNE AT

Link-Belt Cranes has launched a new five axle, 200 tonne 225|AT All Terrain crane. Based on the 185 tonne ATC-3210, it features a slightly longer six section latched boom - 62 metres compared to 61 metres - and more counterweight, while being as easy to move as its predecessor.

The boom can be extended with a 13 to 22 metre bi-fold offsettable swingaway extension to which two 7.6 metre lattice extension sections can be added to provide a maximum tip height of just under 102 metres. Maximum counterweight is 36 tonnes.

The single engine crane is powered by an EPA compliant HVO ready Cummins driving a ZF TraXon transmission for a top road speed of 55 mph while the carrier features the company's full width carrier cab. It also incorporates Link-Belt's Pulse 2.0 operating system, 'SmartStack' counterweight detection, and its 'V-Calc' Variable Confined Area Lifting Capacities variable outrigger set up and monitoring system, providing virtually unlimited outrigger configurations and a radio remote controller for rigging.

So how does the new crane compare?

Manufacturer	Link Belt	Liebherr	Grove	Grove	Tadano	Tadano	Tadano
Model	225IAT	LTM1160-5.2	GMK5180-1	GMK5200-1	AC 5.160-1	AC 5.220-1	AC 5.220L-1
Max capacity	200t	180t	180t	200t	160t	220t	220t
Main boom	62m	62m	64m	64m	68m	68m	78m
Max tip height	102m	102m	101m	101m	97m	108m	106m
Max Cwrt	36t	54t	50t	70t	46t	70.1t	70.1t



NEW LIEBHERR MK 120

Liebherr has launched a new addition to its MK line up of self-erecting mobile tower cranes. Developed from the MK140, the new five axle MK 120-5.1 slots between the four axle MK 88-4.1 and the five axle MK 140-5.1. Key changes are a shorter 52 metre jib, a slightly higher jib tip capacity and six tonnes less counterweight than the MK 140.

Maximum capacity is eight tonnes - the same as the MK 140 - a jib tip capacity of 2.1 tonnes and maximum luffing angle of 40 degrees compared to 70 degrees in the MK 140. It also features a new 12 inch TC-OS (Tower Crane Operating System) split display screen with updated user interface which is set to be rolled out across the entire Liebherr MK mobile tower crane line up by the end of 2025. The MK 120-5.1 can also be ordered with an optional smaller load hook with the same capacity.



STRAIGHT NIFTY ARRIVES

Niftylift has launched its first telescopic boom lift to go into production. The 65ft all-electric HR22SE features a three section telescopic boom and jib with 150 degrees of articulation. The maximum working height is 21.7 metres, with a maximum outreach of 18.8 metres and an unrestricted platform capacity of 280kg.

The HR22SE is powered by a 48 volt power supply from eight 400Ah AGM maintenance free batteries driving a new low noise hydraulic pump and two wheel direct electric drive and steer. Storage capacity is said to be more than enough for a full day's operation between recharges. It can also be equipped with the company's hydrogen fuel cell to create a hybrid model.

Overall width is 2.49 metres, overall height 2.7 metres and overall stowed length is just over nine

metres, or 7.2 metres with the jib tucked under. Tailswing is just 550mm, while the overall weight is 9,980kg.

Options include the company's 'ClipOn' harness/lanyard attachment detector.



AXOLIFT UPGRADES THE ELIFT 350

Italian low level aerial lift manufacturer Gromet has added the upgraded 10ft Elift 300 self-propelled mast type lift to its Axolift product line. Based on the Elift 350, the EL300 has a 4.95 metre working height with a maximum platform capacity of 180kg with 20kg on the mast top tool tray.

Improvements include 35mm of ground clearance, low friction ball bearings in the three section box section mast in place of nylon wear pads, and a hydraulic oil collector in the base in case of leaks. The unit has an overall width of 770mm an overall length of 1.23 metres and a stowed height of 1.77 metres. Total weight is 380kg. As with the EL350, fork pockets are built into the top of the chassis. It also features a footbrake for the rear axle in addition to the regular motor mounted brakes. Power comes from a single 24 volt, 11Ah battery with onboard charger.



BRAVI UPGRADES LOW LEVEL PLATFORMS

Italian low level platform manufacturer Bravi has upgraded its key models - the Leonardo HD and Sprint LP - while introducing a new version of the Sprint TL.

The five metre working height Leonardo HD now has a 230kg unrestricted capacity across the entire dual extension platform, making it more suitable for larger accessories such as the Solo-Gyps plasterboard handler and new 90kg pipe rack. Platform dimensions remain the same at 1.7 metre by 630mm without increasing the overall weight which remains at 560kg for both indoor and outdoor applications.

The Sprint model features a new chassis with reinforced corners and bumpers, while a wider cargo shelf has been designed to fit both the Sprint and Sprint LP models with fold up edges on three sides for improved stock picking efficiency. A new accessory, the 'Suction Gun' grabs hard to reach items at the back of a shelf or rack increasing picking efficiency.

On the Sprint LP model the large parcel cargo shelf has been completely redesigned and is now equipped with a set of rollers on both sides to facilitate the loading of bulkier materials.

The new tyre picking Sprint TL offers 150kg capacity on the tyre compartment, compared to 100kg on the existing model, allowing it to handle 800mm diameter SUV tyres. A trade-off is a slight reduction in working height to five metres.



LGMG EXTENDS MAST LIFT

Chinese manufacturer LGMG has announced the addition of a 400mm deck extension option for the 12ft M0407TE mast type lift it unveiled at Bauma 2022. The M0407TE has a 5.78 metre working height and platform capacity of 230kg.

The regular platform is 1.33 metres by 750mm, with the new option taking that to 1.73 metres with 133kg capacity on the extension. The overall stowed length is now 1.39 metres, while the weight has increased slightly to 840kg. The overall width remains at 760mm with a closed height 1.69 metres. The new model will be offered alongside the standard M0407TE.



US CUSTOMS TO INVESTIGATE SINOBOOM

The US Customs and Border Protection agency (CBP) has launched a formal investigation into Sinoboom North America, to determine whether it has been evading anti-dumping tariffs and duties on the aerial work platforms it has been importing from its plant in Poland.

The investigation was triggered by a complaint from the Coalition of American Manufacturers of Mobile Access Equipment - largely JLG and Genie - which suspects that Sinoboom was evading the tariffs/duties on Chinese built platforms, by importing Chinese built sub-assemblies into Poland, conducting minor assembly work, and then shipping the assembled platforms to the US, misrepresenting them as a Polish built product.

The investigation will cover the period from June 26th, 2023 - a year before the 'coalition' filed its complaint - until the investigation concludes. The complaint and initial investigations are based largely on import statistics which showed a sharp drop in Sinoboom imports from China to the USA corresponding with a sharp rise of imports from China to Poland and Poland to the US. The CBP agrees that there is sufficient suspicion to continue its investigation and look at interim measures to address the situation.

60FT HYBRID BOOM FROM XCMG

Chinese aerial lift manufacturer XCMG has launched a hybrid version of its 60ft XGA20H articulated boom lift. The new lift features a dual sigma riser topped by a two section telescopic boom and 1.85 metre jib with 135 degrees of articulation, providing a maximum working height of 20.18 metres. The maximum outreach is 11.14 metres with an unrestricted 320kg maximum platform capacity, at an up & over height of 8.47 metres.

When stowed, the lift has an overall width of 2.3 metres and an overall length of 8.1 metres - 7.3 metres with jib tucked and is 2.57 metres high - three metres when jib is tucked under. Overall weight is 9,500kg.

Power comes from a lithium ion battery pack said to be good for up to five hours continuous typical operation, with a Kubota

Stage V diesel topping up the battery pack in order to extend the working day, or recharging when no power outlet is available. Electric motor four wheel drive and four wheel steer are standard.



LIEBHERR UPDATES LUFFERS

Liebherr has updated its mid-range luffing jib tower crane range with the introduction of the 440 HC-L. Based on the 357 HC-L, which it replaces, it is available as the 24 tonne 440 HC-L 12/24 or 36 tonne 440 HC-L 18/36. The new models offer a number of performance improvements including 5.8 metres more free standing tower height - now 76.4 metres - and easier installation, with a single block counter-jib ballast weight, one central switchgear cabinet with plug & play set up of electronic components.

Other benefits include a tighter out of service radius - 10.7 metres - the ability to handle loads as close in as four metres, and a 52 percent improvement in jib tip capacities on the longer 65 metre jib - 4,450kg on the 12/24 and 4,050kg on the 18/36. Capacity on a 50 metre jib has been increased to nine tonnes. It is also the first Liebherr crane to feature aramid fibre synthetic pendant ropes, along with other new materials.



TADANO CUTS A DEAL TO END STRIKE

In September Japanese crane manufacturer Tadano and its employees reached an agreement on the future of the Zweibrücken facilities in Germany.

The agreement - which was approved by around 80 percent of the employees - stipulates that production, sales and development at the Zweibrücken site will be maintained until at least the end of 2028. In addition, the Wallerscheid plant will not close until the end of June, and there will be 250 redundancies instead of the original 400. A steering committee will also be set up with the aim to secure the Zweibrücken site by helping it produce competitive products.

JLG E SCISSOR IMPROVEMENTS

JLG is introducing new features and options on its ES slab electric scissors, ERT compact electric Rough Terrain scissors and E18 self-propelled mast lifts/stock picker.

The ES1932, ES2632, ES2646 and ES3246 are now equipped with more efficient permanent magnet AC drive wheel motors and some ES models, along with the E18 mast lifts can now be specified with lithium batteries, for longer run time between recharges. On the ERT Rough Terrains an optional generator pack for remote recharging is now available.



STARTING TODAY, CHANGE OF ROUTE

MXE 160
PICK UP
Compact and versatile.
Multitel quality everywhere.



MULTITEL
SINCE 1911

WWW.MULTITELGROUP.COM

SUBSCRIBE TO THE
C&A NEWS
 PACKAGE AND GET
 THE INDUSTRY'S
 MOST WIDELY
 READ
 NEWS



Vertikal
 net   

EVERY ISSUE
 Delivered to your door
PLUS
DIGITAL ISSUE
 Online

To get your **SUBSCRIPTION**
 up and running register
 online at [www.vertikal.net](http://www.vertikal.net/en/subscriptions)
 /en/subscriptions

YEARLY SUBSCRIPTION

£40.00/€60.00
 (UK and Ireland)
 €75.00 (Rest of Europe)
 \$110.00/£60.00 (Other regions)
 Payable by BACS transfer/
 credit card/cheque

AN INDEPENDENT NEWS SERVICE COSTS
 MONEY AND NEEDS YOUR SUPPORT
SUBSCRIBE TODAY!



HIAB'S NEW HEAVY DUTY CRANE

Hiab has launched the iQ.708 Hipro heavy-duty 60 to 70 tonne/metre 'Next Generation' loader crane. When equipped with the 10 section E9 boom the maximum lift capacity is 11,100kg at 5.1 metres radius, while the maximum tip height is just over 25 metres at which point it has a capacity of 8,200kg at a radius of 6.6 metres.

The new crane is equipped with the company's most advanced control system SPACEvo and also introduces the Synchronised Distance Control (SDC) function which automatically keeps the load at a set distance through the lift, while only having to operate a single controller on the remote.

Other features include the Load Stability System for vertical movements (LSS-V) which compensates for unintentionally excessive lever movements, while the Variable Stability Logic PLUS (VSL+) feature optimises lifting capacity by monitoring the position and pressure of the stabiliser legs and actively using the load on the truck as counterweight. All the above functions are contained in the CD4 remote controller, which provides operators with three large displays visible in all light conditions, haptic feedback for alerts and crane reactions, and battery with personalised operator crane settings.

NEW 20M CMC SPIDER LIFT

Italian spider lift manufacturer CMC has launched the 20 metre S20 spider lift, which joins the company's 'Light and Compact' range. The new lift has a dual sigma type riser for a maximum working height of 19.9 metres, with a maximum outreach of 10.4 metres at an up & over height of just over eight metres with the 230kg unrestricted platform capacity of 230kg.

Overall length is 5.38 metres or 4.5 metres with the basket removed, the overall width is 790mm extending to just over a metre for travel on uneven ground. The unit weighs 2,980kg,

and the outrigger footprint is just under three by three metres. Standard features include protective covers for the outrigger cylinders, proportional hydraulic controls and radio remote controller. Power options include diesel with or without AC power or lithium battery pack.



The new CMC S20 working indoors on plug in electric power

LACK OF RESCUE AT HEIGHT TRAINING?

A UK coroner has raised concerns over the lack of practical rescue at height training in aerial work platform operator training courses, particularly platform to platform rescues, as required with Jason Holland, 51, who died after he was trapped between a scissor lift and racking at a height of 20 metres.

The coroner said: "There is a risk that future deaths could occur unless action is taken. I heard from a number of organisations that the recognised standard within construction for individuals being assessed as competent to operate platforms is IPAF, where individuals undergo a one day course to be assessed as competent to operate a boom lift (3a) or scissor lifts (3b)."

"I understand that operators are classroom trained and then practically assessed. Whilst the theory touches upon rescue at height scenarios, it does not include practical training on rescue at height or basket to basket rescue drills."

A statement from IPAF said: "IPAF has formally addressed concerns raised by HM Coroner's Office regarding rescue at height training. The matter was discussed during the most recent council meeting, and we are now conducting a thorough review of potential measures through a newly established working group."

The full report can be seen at: <https://www.judiciary.uk/prevention-of-future-death-reports/jason-holland-prevention-of-future-deaths-report/>

LGMG GOES DIRECT

Chinese manufacturer LGMG has taken over the distribution of its aerial work platforms and telehandlers in the UK and Ireland from APS - Access Platform Sales.

LGMG had already hired Aron Westby from Skyjack to look after the UK and Irish market and he will now head up its ongoing sales effort. We also understand that it has hired a service engineer. The company has also moved into a 2,800 square metre, new build facility in Speke, Liverpool, close to the airport and part of the regions Freeport area. The building has space for 500 machines and will also house a spare parts warehouse and training rooms, while being able to host customer events.

LGMG and APS signed a distribution agreement for the UK in 2019 and has seen substantial success since then, delivering around 4,500 units to UK and Irish customers.



The new build facility in Speke, Liverpool



www.valla.com



PICK & CARRY CRANES: THE RANGE GOES UP.

The best choice on the market.

Our **Pick & Carry** work indoors and outdoors always with zero emissions. 24 models from 3.6 to 50 tons, fully customizable with numerous options and equipped with exclusive new technologies, such as **EHV (Extreme Hold Valve)**, which guarantees load stability in every situation or **Vertical Mode**, to raise and lower loads in a perfectly vertical manner with a single drive.

More than 70 years of continuous innovation lead us to offer the most comprehensive, reliable and high-performance choice today.

HEADQUARTERS:

Via G. Verdi, 22 41018 - S. Cesario s/P
Modena - Italy

PRODUCTION PLANT 1

Via Leonardo da Vinci, 12 26016 - Careco
Piacenza - Italy - Tel.: +39 0523 258411



Full Electrical
Power Unit



Zero
Emissions

FINANCIALS ROUND-UP

Tadano is to acquire **Manitex International** in an all cash deal for \$223 million, including around £85 million of net debt. Tadano has owned a 14.5 percent stake in the business since 2018. The business includes Manitex boom trucks/truck cranes, PM loader cranes, Oil & Steel aerial lifts and Valla pick & carry cranes, revenues last year were around \$300 million. The transaction is expected to close early next year. Tadano will fund the transaction from cash reserves and external debt financing. The purchase price represents a premium of 52.2% over Manitex's share price on September 11th.



JCB has posted its full year results for 2023, with revenues for the main telehandler and earthmoving businesses - J.C.B Service - increasing 14 percent to £6.5 billion, while pre-tax profits jumped 44.5 percent to £805 million. These numbers do not include JCB Access which is owned by Anthony Bamford, joint venture JCB Finance or JCB Holdings which is registered offshore. The group maintained a strong debt free balance sheet.



Ashtead - owner of **Sunbelt Rentals** in the USA, Canada and the UK - saw first quarter revenues increase two percent to \$2.75 billion, driven by rental growth in all three markets, while pre-tax profits dropped seven percent to \$544 million, due to higher central and interest costs. Capital expenditure for the quarter was \$855 million, down from \$1.13 billion last year. The company also spent \$53 million on two 'tool rental' acquisitions, RentalMax and Wave Equipment.



Indian sales and rental company **Mtandt Rentals** has received an investment of ₹1.5 billion (\$18 million) from a family run fund that invests in the construction and infrastructure markets in exchange for a 20% stake in the business. The investment will come in two tranches, the initial ₹500 million (\$6 million) with a further ₹1 billion (\$12 million) by April 2025. The money will be used to expand the aerial lift and temporary road mat fleets. The fund is looking to help Mtandt Rentals take revenues to ₹100 billion (\$1.2 billion) by 2030 and is prepared to invest more, either directly or through an IPO as and when required.



UK rental group **Vp** has acquired 90% of the equity in Irish rental company **CPH** (Charleville Hire and Platform) for an initial cash sum of €12.1 million. CPH had revenues last year of €9.5 million, with a pre-tax profit €2.3 million. CPH owner-managers James Dundon and Martin Hanley will hold the remaining equity and stay with the business for a three year earn-out period during which time Vp will acquire the remaining shares and pay up to a further €21.7 million, based on performance at the end of each year.



Norwegian sales group **Hybeko** has acquired Danish distribution company **Jøma Lift Teknik** which handles Genie, Dinolift and Leguan in Denmark as does Hybeko in Norway and Finland. Jøma also distributes Teupen spider lifts and Axolift low level platforms. The business joins Liftexperten in Sweden and Hybeko Finland, taking the group's regional coverage to 20 locations and 120 employees.



Dutch aerial lift distributors **GB Hoogwerkers** and **EG Equipment** are merging and moving to a new combined location in Sliedrecht. Gert de Boon owns GB Hoogwerkers, while Erik Geene owns EG Equipment. Both distribute Sinoboomboms and scissor lifts, Axolift low level platforms and Nagano tracked boom lifts. GB Hoogwerkers focuses on the Dutch market, while EG Equipment covers Luxembourg, Belgium, Greece, Austria, Switzerland, Israel, Iceland, Norway and Finland.



Briggs Equipment is merging two of its companies in Ireland - **Aerial Platform Hire** and **Blulift** - which will now operate as Aerial Platform Hire, taking over all powered access rental contracts currently managed by Briggs in the Republic of Ireland.



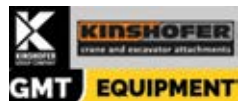
UK rental group **Vp** - owner of telehandler rental company **UK Forks**, low level access specialist **MEP** and **Brandon Hire Station** - issued a first half trading statement, stating that as a result of market headwinds in construction and housebuilding, and a slower start to the year, it expects profits for the current financial year of around £37 million.



Ballyvesey Holdings will merge three of its UK operations - **GB Plant/Contract Plant Rental, Norwest Plant** and **Genesis Equipment Sales** - into a combined operation trading as **Contract Plant**. The move could spell the end of some partnerships, including the UK distribution of **XCMG** aerial work platforms, which Genesis has handled since April 2023.



German lifting attachment manufacturer **Kinshofer** has acquired **GMT Equipment** in order to strengthen and improve its presence in the arborist industry. Family owned GMT specialises in the maintenance, repair and sales of arborist equipment.



Seb Private Equity has acquired Swedish wire rope manufacturer **Talurit** following the retirement of the company's owner, Bernhard Rohland, at the age of 86. Seb Private Equity confirmed that Victor Lindh will remain chief executive, Neil Cooke managing director of Talurit UK, and Uli Kaltenbrunner managing director of Talurit Germany.



ADBLUE UPDATE

ESTA, the European association for the crane and heavy haulage industries, has uncovered numerous examples of engine malfunctions due to AdBlue additives, stating that it may account for up to a third of on-road crane breakdowns.

Its survey of members resulted in 55 companies from 10 countries - mostly the UK, Netherlands, and France - reporting problems with mobile cranes, trucks and modular transporters. Nearly half cited safety risks due to breakdowns on public roads, with a few experiencing dangerous interruptions in wind turbine and port load out operations. Three companies reported more than 20 incidents over the past two years.

ESTA director Ton Klijn said: "We will continue gathering information and will consult members of the joint ESTA and FEM European Regulations Workgroup before deciding on the next steps. What is already clear is that this is a serious issue with considerable safety implications and needs to be addressed as a matter of urgency."



THE SKYLINE COCKPIT

Winvic Construction in the UK has taken the first Skyline Cockpit allowing the operation of tower cranes from a site hut at ground level.

The unit is being used to operate a 14 tonne, 77 metre high Potain MR225 tower crane that will be climbed to 102 metres as the project - a 33 storey student accommodation block - progresses. The 'remote cab' has the same controls as the crane cab, but with wrap around display screens in place of windows. They are fed by seven cameras on the crane to provide the operator with a simultaneous 360 degree view. It also uses augmented reality (AR) to display the hoist line, hook and load as well as real time indicators of wind speed, slew, lifting, hoist, jib and radius data.

Winvic managing director Mark Jones said: "We are pleased to be the first contractor in the UK to utilise ground control tower crane technology. It is transformational for the safety and wellbeing of crane operators and an important step for the industry."



Step into the future

SPX328

Compact, powerful, and intuitive.

The mini crane that represents technological innovation designed for operators at any level. It provides a new experience of work that is intuitive, simple, and powerful, accessible to everyone. Designed for the future, [#MadeForLiftingHeroes](#).

MAX LOAD
2800 kg

MAX HEIGHT
12,8 m

MAX RADIUS
10,4 m

POWER
Batteries 



info@jekko.it
www.jekko-cranes.com



Comprehensive Upgrade Fourteen Benefits

PERFORMANCE+

- 1 **Industry Leading Platform Capacity**
Maximum increase up to 45% compared to the original model
- 2 **Side and Rear Forklift Pockets**
Multiple choices for transport efficiency
- 3 **Lithium-Ion Battery with Long Duty Cycle and Fast Recharging**
High-density battery pack with five-year warranty
- 4 **High Strength Wear Resistant Tyres Compound**
Double the life compared to conventional tyres

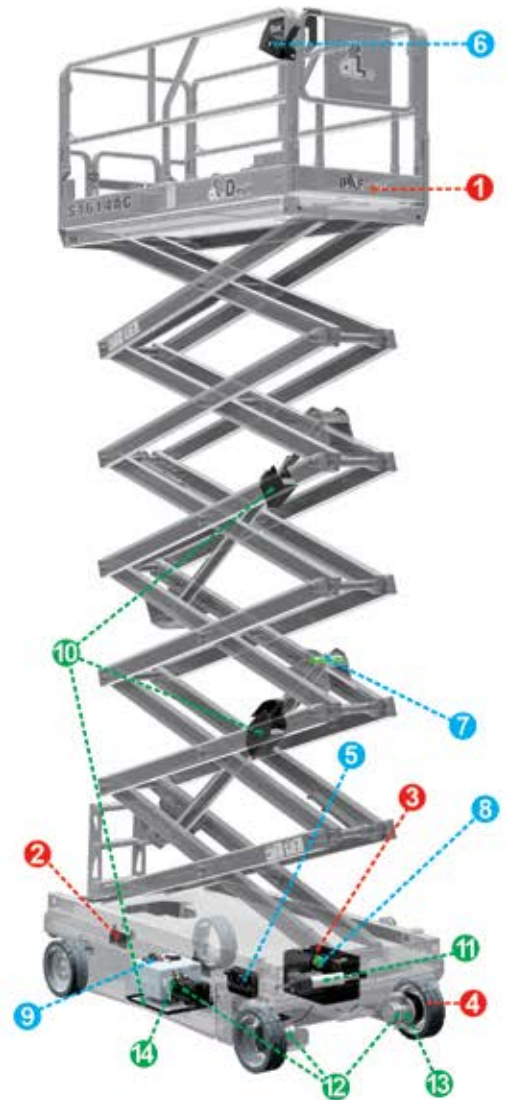


RELIABILITY+

- 5 **Integrated Four-in-One Motor Controller**
40% reduction in connections and harnesses
- 6 **New Platform Control Box**
The durability of the touch pad is greatly improved, the new surface cleans easily, and the display is three times larger
- 7 **Reliable Load Sensing System**
Less affected by temperature and friction
- 8 **Scissor Angle Sensor Reliability Improvement**
Limit switches are reduced by 60%
- 9 **Hydraulic Oil Heater (Optional)**
Applicable for cold environment

ENVIRONMENT+

- 10 **Hydraulic Oil Leak Containment**
For applications with zero leak tolerance
- 11 **Electric Actuator Steering System**
No hydraulic oil, faster steering speed and 66% reduction in energy consumption
- 12 **Gravity Down Energy Recovery System**
Battery charge regeneration during platform descent
- 13 **Highest Efficiency Electric Drive System**
15% decrease in energy consumption and higher power density
- 14 **Highest Efficiency Electric Lift Pump System**
20% decrease in energy consumption and higher power density



AC+

Working Height	8m	8m	10m	10m	12m	14m	16m	16m
Overall Width	0.7m	0.8m	0.8m	1.2m	1.2m	1.2m	1.2m	1.4m

AC+ Series Scissor Aerial Work Platform

ZHEJIANG DINGLI MACHINERY CO.,LTD.
 ADD:188 Qihang Road, Leidian Town, Deqing, Zhejiang, P.R.C
 TEL:+86-572-8681688
 Phone:+86-13806523131 Susan Huang
 E-Mail:export@cndingli.com
 Https://en.cndingli.com



NEWS HIGHLIGHTS

- India's **Mtandt Rentals** has appointed **Sagar Sawlani** as CEO
- Sinoboom** Australia has opened sales & service branches in Sydney and Brisbane
- Austrian roofer **Salamon & Scherr Dachbau** has taken an 18m **EuropeLift** TM18GT trailer lift
- Liebherr** has delivered a new STS crane to **PSA Penn Terminals** in Philadelphia
- Ged Kelly**, business development manager for **Haulotte UK**, has died
- Tower crane manufacturer **Stafford Tower Cranes** has started designing and manufacturing its own crane cabs
- Switzerland's **Sky Access** is celebrating 40 years and has changed its name to **Sky X**
- The **Scottish Plant Owners Association** is calling on crane employers to enrol apprentices in its second intake of the **Scottish Crane Operator Apprenticeship**
- UK rental company **Warren Access** has taken two 20m **Hinowa** 20.10 spiders
- Rosenbauer** has opened a sales & service location in **Achau**, south of Vienna
- Genie** has delivered 171 booms and scissor lifts to UK rental company **Ashbrook**
- Hy-brid Lifts** has appointed **Charlie Haskin** as sales director for the western USA
- UK steel erector **Steel Work Construction** has taken its first crawler crane - a **Liebherr** LTR 1100
- Merlo** has received Italy's **PEF training excellence award** for its CFRM training and research centre
- UK based **Lift Minicranes** has taken six new **Maeda** and one **BG Lift** M250 spider cranes
- Finland's **Leguan Lifts** has appointed **Juuso Valtakari** as marketing manager
- UK based vehicle mounted lift manufacturer **CPL** has launched **CPL Recovery**
- Socage** has issued a statement regarding an incident with one of its older truck mounted lifts in **Boston** last month
- Notus'** new heavy lift and transport business - **Heavy Lift Projects & Port Services** - will be managed by **Liam McLoughlin**
- The offshore division of **Empire Energy** has teamed up with **Sarens** to work on U.S. offshore wind projects
- Riwal** chief executive **Pedro Torres** is leaving the company in the new year
- The **JDL Expo** was held in Beaune, France last month
- German company **Wir-Vermieten** has joined **System Lift** - the association of independent local rental companies
- Austrian energy company **Energienetze Steiermark** has taken a 15m **Niftylift** 150 T trailer lift
- UK rental company **Bray Cranes** has taken a 40t LTM 1040-2.1 with a 70 tonner on the way
- Heavy lift specialist **Malcolm Robinson** has died after a long illness
- Poland's **Max Trailer** has manufactured and delivered its 10,000th unit
- German company **Kunze** has broken ground for its new HQ



Sagar Sawlani



Ged Kelly



Charlie Haskin



Juuso Valtakari



Liam McLoughlin



Pedro Torres

- Wacker Neuson's** new Stage V diesel telehandlers are now **HVO** ready
- IPAF** has appointed **Randy Marzicola** as vice president North America
- Mexican rental company **Magruber** has taken seven new **Liebherr** cranes
- Ruthmann** has appointed **Christian Roß** as head of sales & marketing
- Merlo** has appointed **Dunrave Plant** as construction telehandler distributor for Southeast Wales and Herefordshire
- Versalift UK** and waste management services **Axil** have signed a five year contract
- Welsh rental company **R. W. Christopher** has taken a 60t **Liebherr** LTM 1060-3.1 with two more cranes due shortly
- UK's **Cadman Cranes** has taken a four tonne **Hoeflon** C10 spider crane
- LGMG** has joined the US based online parts and service network **SmartEquip**
- Multitel** has appointed **Xavier Vega Basquens** sales manager, **Juan Jose Carretero Serrano** after sales service coordinator and **Jose Serafin Prieto Martin** technical assistance at its new Barcelona subsidiary, **Multitel Iberica**
- Manitowoc** has appointed **VA Techys** as its Grove crane distributor in Thailand
- Magni** has appointed US sales and rental company **Gap Power** as telehandler dealer for Southeastern Pennsylvania
- Hundreds of people were evacuated in **Munich** last month when three tower cranes lost stability in the torrential rain
- Chinese aerial lift manufacturer **LGMG** has appointed **Omar Kaima** as sales manager for France
- Italian company **S.A.S. group** has added two new **Liebherr** ATs - a 300t LTM 1300-6.3 and a 100t LTM 1100-5.3
- Multitel UK** has appointed **Alan Faithorn** as a second sales manager joining **Greg Moore**
- Manitou Asia** has appointed **Pin Siam** as its **Gehl** compact equipment distributor in Thailand
- UK's **ABA Cranes** has produced a 2025 calendar with team member photos to raise money for the **Mates In Mind** Charity
- Four German rental companies have taken delivery of pink **Merlo** 360 degree telehandlers to raise awareness for breast cancer
- Luxembourg based **Jan De Nul** group has taken two 100t **Tadano** GR-1000EX-4 RTs
- Canada's **Stephenson's Rental Services** has promoted **Rob Wilson** to chief executive while **Guy Manuel** moves to executive chairman
- Jimmy Waters**, spare parts manager for **Snorkel Europe**, has died
- French company **Comlev** has taken a 120t **Liebherr** LTM 1120-4.1 AT crane
- UK rental association - the **Hire Association Europe** (HAE) - has appointed **Neil Bravery** as commercial director
- The **inquest** was held into the death of **David and Clayton Bottomley** in the UK after their mastclimber in Liverpool dropped 14 floors in May 2021
- UK regional **JCB** dealer **Watling JCB** has acquired **Midlands JCB**



Randy Marzicola



Christian Roß



Xavier Vega Basquens



Jose Serafin Prieto Martin



Juan Jose Carretero Serrano



Alan Faithorn



Rob Wilson

- UK crane industry veteran, sales manager and company director **Andrew Plant** has died
- Manitowoc UK** has opened a second after sales support facility in **Barnsley**, South Yorkshire
- Raimondi** tower cranes has appointed **Mauro Masetti** as sales director
- UK's **Bronzeshield** has taken the first of three new **Liebherr** cranes - a 90t LTM 1090-4.2
- Italian manufacturer **Jekko** has created **Jekko France** with its existing distributor **Matelev** and **Fassi**
- UK based **Ainscough Crane Hire** has achieved the **Armed Forces Covenant Gold Award**
- Germany's **Richard Kölch & Sohn** has taken a 90t **Liebherr** LTM 1090-4.2
- Two men have cycled 2,400km across Europe between three **Liebherr** production facilities
- Austria's **Wilfried Gruber** has taken an 18m **Ruthmann Bluelift** SA18HB hybrid spider lift
- UK rental company **Abba Plant Hire** has taken a 150t **Liebherr** LTM 1150-5.3
- UK based **EnerMech** has promoted **Ruairi Kerr** to SVP of business development
- Weidler Arbeitsbühnenvermietung** has formed a 'strategic partnership' with **Gerken Arbeitsbühnen**
- Austria's **Flott Arbeitsbühnen** has joined **Partner Lift** - the German association of independent rental companies
- Manfred Gerken**, the founder and MD of German rental group **Gerken**, has died
- UK company **TAH Access Platforms** has taken a 23m **CMC** S23 lithium spider lift
- Sunbelt Rentals'** owner **Ashtead** has appointed **Alex Pease** to take over as CFO when Michael Pratt retires in 12 months
- Turkish crane grab manufacturer **Cromex Makine** has appointed **Cranes & Spares** in the UK
- UK crane rental veteran **Alex Glover** has died
- Genie** has appointed **Global Makina** as an authorised dealer in Turkey
- UK's **Walker & Son Hauliers** has taken two new **Liebherr** ATs
- UK rental company **Plantforce** has appointed **Chris Matthew** as commercial director
- Kito Crosby** is donating to the **US Fallen Patriots Foundation** to provide scholarships to children who have lost a parent in the line of duty
- Sinoboom** has appointed **JCB** veteran **Ian Pratt** as MD of its new Telescopic Handler Business Unit in China
- US based **Lomma Crane & Rigging** has taken two **Link-Belt** 227 tonne telescopic crawlers for contracts in South Carolina
- Taiwanese rental company **Fu Yifa** has taken delivery of its first **Grove** AT
- Liebherr USA** has opened a new crane spare parts warehouse in **Kansas City**
- Software supplier **Point of Rental** has appointed **Brooke Ryan** as VP global support services
- US based **Audubon Engineering Company** has added a third 700t **Liebherr** LR 1700-1.0 lattice crawler crane
- Crane industry veteran **Steve Filipov** has been appointed CEO of **Metalliance** following a successful takeover



Mauro Masetti



Ruairi Kerr



Alex Pease



Chris Matthew



Brooke Ryan



Steve Filipov

See www.Vertikal.net news archive for full versions of all these stories

SCOPE 3 ARE YOU READY?

CONTACT US TO ACCESS YOUR AINSCOUGH SCOPE 3 DATA

Real time reporting of your Scope 3 data via the industry first 'My Ainscough Portal' giving you access to the information you need for your 'Net Zero' commitments

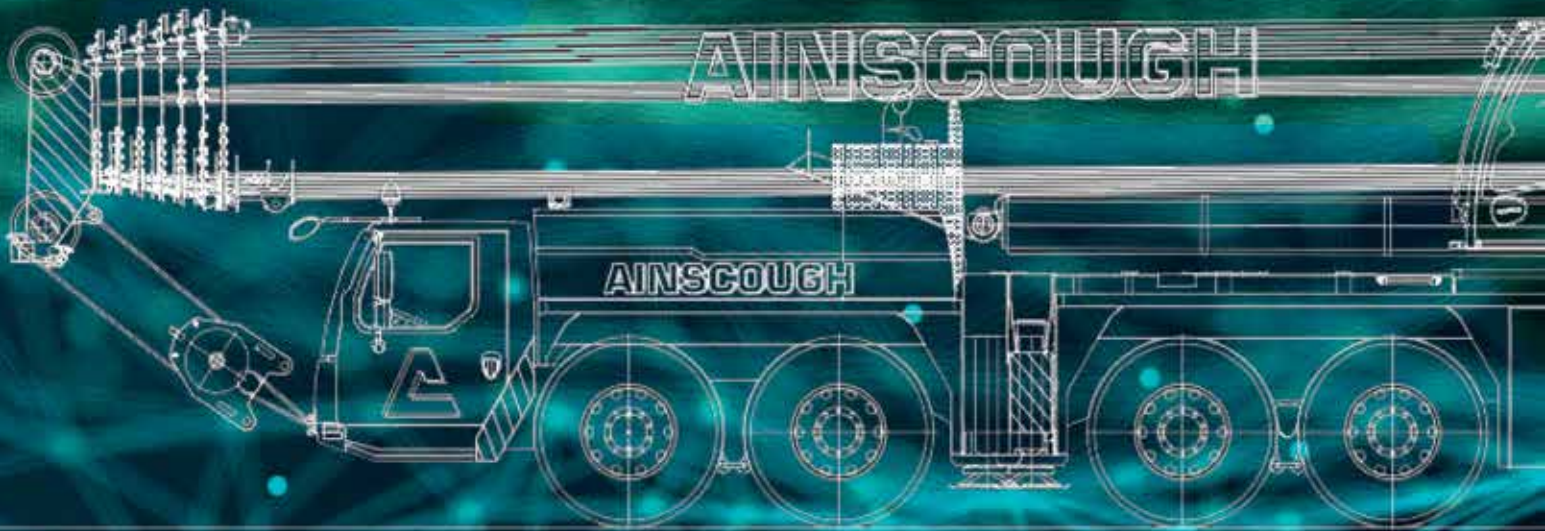
A Carbon Neutral organisation since September 2023

80% carbon reduction in Scope 1 & 2 emissions since 2019

Hydrotreated Vegetable Oil (HVO) fuel powering our entire crane and haulage fleet

Largest fleet of Stage V engine emission cranes in the UK

Broadest depot network in the UK, reducing distance travelled to project and ultimately carbon emissions



www.ainscough.co.uk



TOP 30 UK & IRELAND RENTAL COMPANIES SURVEY

For many UK businesses, the past year has been one of uncertainty - dominated by the general election and a change of Government along with high but falling inflation and interest rates. This political and economic uncertainty has led many companies to adopt a 'wait and see' attitude resulting in developments being put on hold while waiting for a positive budget that brings investment and renewed confidence.



Bank interest rates remained relatively high, which, combined with the other factors has resulted in companies 'sitting on their hands' when it comes to equipment investment. Most crane, access and telehandler manufacturers have seen a slower order intake in the first half of the year although this is now showing signs of improving.

The economic challenges have been exasperated by an ongoing labour shortages, both skilled and unskilled. Even though inflation in October has fallen below the Bank of England's target of two percent, there have been significant price rises over the year, resulting in the cost of nearly all equipment increasing considerably over the past year or two.

Despite the rising prices there has been enough work with very few rental company failures although there have been a number of high profile contractor bankruptcies which will inevitably have a knock on effect for suppliers via bad debts.

The crane sector has seen very few changes to fleet sizes - Ainscough reduced its fleet by 10 units, while the King Lifting, Baldwins, Global Port Services and Bryn Thomas have added to their fleets consolidating their positions as having the second to fifth largest crane fleets in the UK.

The same is broadly true of the access rental companies. Market leader Nationwide Platforms has reduced its fleet by almost 2,000 machines over the past year, with reductions in all equipment categories. The majority of the other large fleets reported growth, including MEP Hire up 100, Summit Platforms and Star Platforms

both up around 600. Access Hire Nationwide continues to dominate the van mounted sector adding an additional 157 van mounts and investing almost £30 million over the past year.

The telehandler sector also follows the same pattern with small movements up and down among the leading companies. Ardent Hire still leads the way with almost 3,000 machines although this will increase next year as it recently announced a £50 million investment in about 750 new telehandlers from Manitou and JCB for delivery next year, which will double its 360 degree fleet to around 200 machines.

METHODOLOGY

This year we have continued to use the online questionnaire in a bid to make it faster and easier to enter the data. This has proved popular with a record number of responses received. In spite of this, it has been a struggle to obtain data from many of the usual suspects, and it has taken a great deal of chasing and cajoling by email and telephone to bring in the stragglers. For those that 'refused' to take part or simply did not supply information we have used our industry sources to include figures that we think, and hope are representative estimates.

As always, a very big thank you

to all the companies that have participated in this year's survey.

We hope that it will prove to be another useful and insightful report for our many readers both in the UK and around the world. Numerous requests from major contractors regarding its publication date indicate that it is becoming an increasingly popular tool for end users.





CRANES

Despite the economic uncertainty, increasing prices, extended delivery times, labour shortages and difficulties in moving cranes to and from site, the overall number of cranes from the five leading crane rental companies increased around seven percent. The market is also seeing the first rental companies looking at Chinese built cranes. Sany for example was

sold one of its 60 tonne three axle cranes to RRC Crane Hire.

Crawler crane rental companies have generally maintained or expanded their fleets a little after a few challenging years, possibly as a result of more infrastructure projects coming on stream or in the pipeline.



TOP MOBILE CRANE COMPANIES

Company	Total	All Terrain/ Trucks	Rough Terrain	Mobile Towers	Pick & Carry	Trailer Cranes
Ainscough Crane Hire	382 ▼	372	0	10	0	0
King Lifting	133 ▲	128	0	2	3	0
Baldwins	83 ▲	82	0	1	0	0
Global Port Services	77 ▲	72	0	0	5	0
Bryn Thomas Cranes	73 ▲	68	0	4	1	0
Kavanagh Crane Hire	68 ▲	65	0	3	0	0
City Lifting	57 -	39	0	18	0	0
Bronzeshield Lifting	56 ▼	54	0	2	0	0
Emerson Crane Hire	55 ▼	54	0	1	0	0
Davies Crane Hire	53 ▼	50	0	2	1	0
Southern Cranes & Access	51 ▲	47	0	3	1	0
Marsh Plant Hire	50 ▼	50	0	0	0	0
Sarens UK	49 ▼	44	1	3	1	0
Crowland Cranes	44 ▲	33	4	1	6	0
Dewsbury and Proud	42 ▲	38	0	0	4	0
Sparrow Crane Hire	39 ▲	37	0	1	1	0
ABA Cranes	38 ▼	37	0	1	0	0
Forsyth of Denny	37 ▲	36	0	1	0	0
East Cork Crane Hire	36 ▲	33	1	2	0	0
John Sutch Cranes	34 ▼	32	0	2	0	0
Macsalvors	33 ▲	33	0	0	0	0
Coussens Cranes	32 ▲	30	1	1	0	0
Cork Crane Hire	32 ▲	26	0	6	0	0
Emsley Crane Hire	30 ▼	30	0	0	0	0
Steve Foster Cranes	27 ▲	23	0	2	2	0
NMT Crane Hire	25 -	22	0	3	0	0
Bernard Hunter Mobile Cranes	23 -	18	0	2	3	0
Tusker Crane Hire	22 ▼	21	0	1	0	0
Dowse Crane Hire	20 -	0	0	20	0	0
RRC Crane Hire	19 ▲	16	0	1	2	0
Bob Francis	19 -	17	0	0	2	0
Thanet Crane Hire	19 ▲	19	0	0	0	0
PP Engineering	18 ▼	18	0	0	0	0
Marsden Crane Services	17 NEW	17	0	0	0	0
Bray Cranes	17 ▲	17	0	0	0	0
County Lifting Services	16 -	10	0	0	6	0
Cadman Cranes	16 ▼	16	0	0	0	0
APH Cranes	14 -	14	0	0	0	0
Stoddart Crane Hire	13 NEW	13	0	0	0	0
Cramscene	12 NEW	10	0	0	0	2
E J McGovern Crane Hire	11 NEW	10	0	1	0	0
Ellis Crane Hire	10 NEW	10	0	0	0	0
Berry Cranes	10 NEW	9	0	1	0	0

Fleet size in the past 12 months has: ▲ Increased ▼ Decreased - Remained the same



LARGEST MOBILE CRANES

Company	Capacity	Make & Model	# in Fleet
Mammoet	1,200	Liebherr LTM11200-9.1	N/D
Sarens UK	1,200	Gottwald AK 680-3	1
Baldwins	1,000	Terex Demag AC1000	N/D
Osprey Heavy Lift	800	Liebherr LTM1800D	1
King Lifting	800	Liebherr LTM1750-9.1	1
Ainscough Crane Hire	800	Liebherr LTM1750-9.1	2
East Cork Crane Hire	800	Liebherr LTM1750-9.1	1
Global Port Services	800	Liebherr LTM1800-9.1	1
Bernard Hunter	700	Liebherr LTM1650-8.1	1
Kavanagh Crane Hire	700	Liebherr LTM 1650-8.1	1
Davies Crane Hire	700	Liebherr LTM1650-8.1	1
Forsyth of Denny	650	Terex TC 2800	1
Bronzeshield Lifting	500	Liebherr LTM1500-8	1
NMT	450	Liebherr LTM1450-8.1	1
City Lifting	450	Liebherr LTM1450-8.1	1
Emerson Crane Hire	450	Liebherr LTM1450-8.1	2
John Sutch Cranes	450	Liebherr LTM1450-8.1	1
Cramscene	450	Grove GMK 7450	1
Cork Crane Hire	350	Liebherr LTM1350-6.1	1
Tusker Crane Hire	350	Terex AC350	1
Sparrow Crane Hire	300	Liebherr LTM 1300-6.3	1
Bryn Thomas Cranes	300	Grove GMK6300-L	2
RRC Crane Hire	300	Demag AC 300-6	1
Steve Foster Cranes	300	Grove GMK6300L-1	1
Crowland Cranes	300	Grove GMK6300L	1
Southern Cranes & Access	300	Liebherr LTM1300.6.2	1
Walsh Crane Hire	250	Liebherr LTM 1250-5.1	1
E J McGovern Crane Hire	250	Liebherr LTM1250-5.1	1
Dewsbury and Proud	250	Grove GMK5250XL-1	1

TOP TOWER CRANE COMPANIES

Company	Total	Rope Luffers	Hydraulic Luffers	"Normal" Self Erectors	Hammerhead/ Flat Tops
Falcon Tower Crane Services	412 ▼	140	84	74	114
Wolffkran	260 ▲	141	39	0	80
Select Plant Hire	190 ▲	135	20	0	35
London Tower Crane	185 ▼	30	80	15	60
Mantis Cranes	161 ▲	0	6	114	41
City Lifting	158 ▼	52	20	25	61
Bennetts Cranes	141 ▲	32	78	0	31
Trident Lifting Solutions	98 ▲	54	21	0	23
Uperio UK	82 ▼	47	10	8	17
Radius Group	61 ▲	35	8	0	18
Ladybird Crane Hire	60 ▼	0	0	30	30
Irish Crane & Lifting	60 -	1	0	0	59
Heathrow Cranes	53 ▼	32	8	1	12
Lewis Tower Crane Services	44 ▼	9	0	7	28
Abraham Tower Crane Hire	31 <small>NEW</small>	9	0	2	20
Sparrow Crane Hire	30 ▲	0	0	30	0



TOP CRAWLER CRANE COMPANIES

Company	Total	Spider Cranes	Telescopic	Lattice	Mini (<12t)
Weldex	157 ▲	0	51	105	1
Select Plant Hire	83 ▼	0	46	36	1
Delden Cranes	71 ▲	0	23	48	0
AGD Equipment	70 ▼	0	54	10	6
NRC Plant	70 -	0	15	30	25
Q Crane & Plant Hire	50 -	0	6	42	2
G.H. Johnson Crane Hire	41 -	0	10	31	0
BPH Equipment	35 -	0	10	25	0
Sarens UK	22 -	0	5	17	0
Jones Crawler Cranes	20 -	0	10	8	2
Stoddart Crane Hire	20 ▲	0	7	7	6
Hawks Crane Hire	18 -	0	6	12	0
Sparrow Crane Hire	17 ▲	8	1	0	8
City Lifting	14 ▲	8	0	1	5
Stoddart Crane Hire	13 ▲	0	7	0	6
Emerson Crane Hire	10 -	3	4	0	3

LARGEST TOWER CRANE IN FLEET

Company	Capacity	Make & Model	# in Fleet
Select Plant Hire	66	Terex CTL1600-66	12
Falcon Tower Crane Services	64	Jaso J780PA.64	5
Wolffkran	60	Wolff 1250B	5
City Lifting	50	Comansa 21LC 750	1
Heathrow Cranes	36	Saez SL730	1
Bennetts Cranes	45	Wolff 500B	1
Radius Group	32	Potain MR608	7
London Tower Cranes	24	Jost 416.24	5
Trident Lifting Solutions	24	Comansa LCL500-24	11
Mantis Cranes	20	Saez TLS80	2
Uperio UK	16	Terex CTt 332-16	N/D
A Abraham Tower Crane Hire	16	Terex CTT 331-16	3
Irish Crane & Lifting	16	Terex CTT 331	N/D
Sparrow Crane Hire	6	Potain IGOT 130	1
Ladybird Crane Hire	6	Potain MDT109	4

MAT & TIMBER SERVICES



CRANE MATS
OUTRIGGER MATS
TEMPORARY ACCESS ROADS
RAMPS

For all types of cranes under any application - Nationwide and Overseas



TEL: +44 (0) 1264 811005
FAX: +44 (0) 1264 810600

e-mail: mats@sarumhardwood.co.uk web site: www.sarumhardwood.co.uk

75
Years
of moving forward

Compact power – a fresh take

The 25 L and 33 L

These fast-erecting cranes combine compact design, high-performance, and the latest technology. This makes them ideal for your house building projects.

www.liebherr.com/L-cranes

LIEBHERR

Fast-erecting cranes

LIEBHERR
25 L

Your dependable partner for Powered Access



Powered
Access hire



Working at
Height
training



Safety
Innovations



Digital account
management
services



Local depots
across the UK



UK's largest
powered
access fleet



Contribution
to Safe
Working
at Height



Contribution
to Safe
Working
at Height



Innovative
Technology
Prize
(Harness ON)

 **Nationwide
Platforms**
A **LOXAM** Company



**YOUR
SAFETY
OUR
PRIORITY**



0345 745 0000
nationwideplatforms.co.uk




The powered access sector is a bit of a mixed bunch however the majority of companies expanded their fleets with movements within 10 percent or so. Nationwide Platforms remains well out in front but made a substantial purge of its fleet as it looks to reduce the average age and bring in new technology.

Access Hire Nationwide continues to dominate the van mounted sector adding a further 10 percent to its fleet which now stands at 1,730 having invested just shy of £30 million over the past year.

TOP POWERED ACCESS COMPANIES

Company	Units in Fleet	Articulated Booms		Straight Telescopic Booms		Self Propelled Slab Scissors	Mast Lifts	Mast Booms	Spider Lifts	Push Arounuds	Rough Terrain Scissor Lifts		Truck Mounts		Van Mounts	Trailer Lifts
		Electric Hybrid	Diesel	Electric Hybrid	Diesel						Electric Hybrid	Diesel	3.5t GVW	Over 3.5t GVW		
Nationwide Platforms	11,735 ▼	986	2,219	669	500	3,475	823	522	128	137	110	1,654	89	135	288	0
MEP Hire	7,400 ▲	0	0	0	0	600	0	0	0	6,800	0	0	0	0	0	0
Speedy Hire	7,343 ▼	438	352	0	35	2,510	626	323	1	2,764	0	286	0	7	0	1
Summit Platforms	6,616 ▲	611	1,361	2	367	2,011	354	176	0	323	128	1,283	0	0	0	0
AFI-Uplift	5,997 ▼	467	1,023	7	351	2,830	262	93	55	17	35	599	55	18	178	7
Sunbelt Rentals	4,827 ▲	9	897	261	234	1,650	363	0	25	865	68	455	0	0	0	0
Star Platforms	4,168 ▲	242	118	0	6	2,039	358	144	0	936	128	197	0	0	0	0
GTAccess	3,171 ▼	350	350	20	50	1,700	30	220	40	30	45	270	30	1	0	35
HSS Hire	3,040 ▼	0	0	0	0	400	60	80	0	2,500	0	0	0	0	0	0
Briggs	2,690 —	500	0	50	200	1,400	60	60	10	300	50	50	0	0	0	10
Charles Wilson Engineers	2,576 ▲	285	560	0	98	980	35	42	12	240	60	261	0	0	0	3
Advanced Access Platforms	2,427 ▲	362	33	13	44	1,026	130	42	26	663	44	42	0	0	0	2
JMS Powered Access	2,361 ▲	150	171	1	31	646	130	48	75	900	36	166	4	0	0	3
Height for Hire	2,300 ▼	350	250	0	350	700	50	40	75	150	10	73	50	40	160	2
Access Hire Nationwide	1,840 ▲	0	0	0	0	0	0	0	0	0	0	0	0	110	1,730	0
Quick Reach Powered Access	1,798 —	206	242	0	123	288	201	72	15	234	112	305	0	0	0	0
Hire Safe Solutions	1,678 ▲	0	600	0	475	500	0	20	23	60	0	0	0	0	0	0
KDM Hire	1,249 ▲	91	138	7	70	517	104	27	16	148	10	94	2	0	19	6
Elavation	1,166 ▲	488	26	0	0	432	36	12	48	62	38	12	0	0	0	12
Charleville Hire & Platform	1,123 ▲	54	62	3	46	634	85	26	2	165	2	44	0	0	0	0
Mr Plant Hire	1,020 ▲	36	19	2	0	275	51	5	4	595	22	11	0	0	0	0
JPS Platforms	895 ▲	42	43	0	2	506	56	26	4	149	1	66	0	0	0	0
OK Tool Hire	872 ▲	444	63	0	26	240	23	15	2	30	0	25	2	0	0	2
Horizon Platforms	855 ▲	91	0	0	0	485	0	124	0	155	0	0	0	0	0	0
1 Up Access	803 ▲	175	149	5	34	230	0	40	0	0	20	150	0	0	0	0
Select Plant Hire	798 ▲	7	21	0	0	555	197	8	0	0	4	6	0	0	0	0
Mainline	694 ▲	145	56	6	4	334	16	29	0	17	53	34	0	0	0	0
UK Tool Hire Group	678 NEW	54	82	2	7	222	31	31	11	33	6	86	19	0	94	0
Smiths Equipment Hire	657 ▼	83	23	0	0	300	40	30	5	100	19	53	0	0	0	4
Powered Access Services	642 ▲	72	161	0	25	214	0	12	0	3	13	142	0	0	0	0
Premier Platforms	628 ▲	90	53	0	5	265	19	28	1	26	61	76	2	0	0	2
Gwynedd Forklifts	614 ▲	48	155	0	26	160	16	41	2	8	2	154	2	0	0	0
Hird	569 ▲	201	32	4	2	203	0	13	7	50	0	55	2	0	0	0
Access Plus	530 —	60	40	0	20	310	15	20	0	40	0	20	5	0	0	0
Ord Industrial	500 NEW	26	200	0	28	120	37	12	6	22	0	48	1	0	0	0
Bella Access	475 —	60	15	0	20	350	30	15	5	50	5	25	0	0	0	0
Ashbrook	425 ▲	70	81	0	22	0	24	0	0	0	130	98	0	0	0	0
One Stop Hire	420 ▲	3	0	0	0	84	0	3	3	327	0	0	0	0	0	0
Astley Hire	335 NEW	52	0	0	0	143	45	32	0	60	2	0	0	0	0	1
United Powered Access	300 ▲	27	20	0	10	120	0	18	0	15	0	90	0	0	0	0
The Platform Hire Centre	287 ▲	31	26	0	6	140	18	24	0	14	2	26	0	0	0	0
Smart Platform Rental	267 ▲	0	0	0	0	0	0	0	0	0	0	0	228	19	20	0
Orion Access	178 NEW	45	10	0	1	20	0	4	30	4	0	8	35	21	0	0
PG Platforms	175 NEW	25	6	0	0	80	4	8	5	0	2	20	11	6	7	0

Fleet size in the last 12 months has: ▲ Increased ▼ Decreased — Remained the same

TOP VEHICLE MOUNTED FLEETS

Company	Total	Truck Mount		Straight Telescopic Booms
		3.5t GVW	Over 3.5t GVW	
Access Hire Nationwide	1,840 ▲	0	110	1,730
Nationwide Platforms	512 ▼	89	135	288
Smart Platform Rental	267 ▲	228	19	20
AFI-Uplift	251 ▼	55	18	178
Height for Hire	240 ▼	100	40	100
UK Tool Hire Group	114 NEW	19	0	94
Blade Access	108 ▲	50	50	8
Orion Access	56 ▲	35	21	0
GTAccess	31 -	30	1	0
Clearview Cleaning Services	29 ▲	2	27	0
Maps Platforms	27 -	11	1	15
PG Platforms	24 -	11	6	7
KDM Hire	21 -	2	0	19
Clerkin Elevation	20 ▼	10	10	0



LARGEST SCISSOR LIFTS

Company	Model	Working Height m	# in Fleet
Hire Safe Solutions	Dingli 3730HRT	37	20
AFI-Uplift	Hollandlift Megastar G-320	34	N/D
JMS Powered Access	JLG Liftlux 320-30	34	N/D
Nationwide Platforms	Holland Lift HL340D	34	3
Mainline	Holland Lift G320	34	4
Speedy Powered Access	Holland Lift G320	34	N/D
Reactive Rentals	Holland Lift HL330E	33	1
1 Up Access	Dingli 3214DC	32	2
Powered Access Services	Dingli 2814	28	6
Height for Hire	JLG Liftlux 245-25	26	11
KDM Hire	Holland Lift 275DS	25	N/D
UK Tool Hire Group	Dingli 2212DC	22	N/D
Charles Wilson Engineers	Dingli 2223RTB	22	14
Sunbelt Rentals	Dingli 2223DC	22	2
Dromad Hire	Dingli 2212DC	22	6
GTAccess	Dingli 2212	22	N/D
Mr Plant Hire	Dingli 222DC	22	2
Astley Hire	Dingli 2212	22	72
Powered Access Services	Dingli 2212	22	4
Summit Platforms	dingli 2223	22	4
Ord Industrial	Dingli 223RT	22	1
Charleville Hire & Platform	Skyjack SJ9664RT	22	3
Charles Wilson Engineers	Dingli 1912DC	19	8

LARGEST SPIDER LIFTS

Company	Model	Working Height m	# in Fleet
TCA Lifting	Palazzani XTJ52	52	1
JMS Powered Access	Falcon FS520C	52	N/D
Clearview Cleaning Services	Platform Basket 43T	43	1
Orion Access	Easylift R420	42	1
Hire Safe Solutions	Teupan FS420	42	1
Clerkin Elevation	Ommelift 4200RBDJ	42	1
Paramount Platforms	Ommelift 4200	40	2
Elev8 Access Platforms	Teupan Leo 36T	36	2
AFI-Uplift	Teupan Leo 36T	36	N/D
Elevation	Hinowa 33.17	33	4
PG Platforms	Hinowa 33.17	33	1
KDM Hire	Hinowa 33.17	33	N/D
Sunbelt Rentals	Hinowa 26.14	26	6
Advanced Access Platforms	Hinowa 26.14	26	4
Hird	Hinowa 26.14	26	1
UK Tool Hire Group	Cela DT25	25	1
Tracked Access	Multitel SMX250	25	2
Mr Plant Hire	Hinowa 26.14	24	1
Ord Industrial and Commerical	Teupan Leo 21GT	21	1
Newmarket Plant Hire	Hinowa 20.10	20	4
OK Tool Hire	Hinowa 20.10	20	2

LARGEST TRUCK MOUNTED LIFTS

Company	Model	Working Height m	# in Fleet
Blade Access	Palfinger P1000	102.5	N/D
Elev8 Access Platforms	Palfinger P900	90	2
Height for Hire	Bronto S90HLA	90	N/D
Nationwide Platforms	Bronto S90HLA	90	N/D
AFI-Uplift	Palfinger P750	75	N/D
Clearview Cleaning Services	Ruthmann T750HF	75	2
ACS Access	Palfinger WT700	70	N/D
Orion Access	Palfinger P570	57	1
Smart Platform Rental	Bronto 56XR	56	2
BMS	Bronto 56XR	56	N/D
PG Platforms	Ruthmann T510HF	51	1
NSS Hire	Palfinger P450	45	N/D



LARGEST BOOM LIFTS

Company	Model	Working Height m	# in Fleet
Hire Safe Solutions	XCMG XGS70K	70	3
JMS Powered Access	JLG1850SJ	58	1
Nationwide Platforms	JLG1850SJP	58	1
AFI-Uplift	Zoomlion ZT58J	58	N/D
Ord Industrial	Genie SX180	57	1
Hire Safe Solutions	JLG JL1500AJP	48	22
KDM Hire	Genie SX150	48	N/D
Advanced Access Platforms	Genie SX150	48	1
Mainline	JLG 1500AJP	46	8
1 Up Access	Dingli BA44	44	4
Charles Wilson Engineers	Genie ZX135	43	7
AFI-Uplift	GenieSX135	43	N/D
Gwynedd Forklifts	Genie ZX135	43	12
Sunbelt Rentals	Genie ZX135/JLG1350SJP	43	5
Summit Platforms	Genie ZX135	43	9
Charleville Hire & Platform	Genie ZX135	43	1
Powered Access Services	ZX135/70	43	4
GTAccess	Genie S125	40	N/D

PERCENTAGE OF FLEET HYBRID/ELECTRIC/DIESEL

Company	Electric %	Hybrid %	Diesel %
1 Up Access	40	20	40
Acrolift	40	50	10
Advanced Access Platforms	46	47	7
AFI-Uplift	57	6	37
APH Cranes & Access	41	6	53
Ashbrook	39	11	50
Astley Limited	91	9	0
Charles Wilson Engineers	35	25	40
Charleville Hire & Platform	81	2	17
Clearview Cleaning Services	0	5	95
Elavation	44	48	8
GTAccess	65	10	25
Gwynedd Forklifts	65	10	25
Hird	40	30	30
Hire Safe Solutions	18	13	70
Horizon Platforms	90	10	0
JMS Powered Access	40	20	40
JPS Platforms	71	8	21
KDM Hire	69	4	27
Mainline	79	7	14
Maps Platforms	10	5	85
MEP Hire	100	0	0
Mr Plant Hire	94	5	1
Nationwide Platforms	49	8	43
Newmarket Plant Hire	31	41	28
OK Tool Hire	70	2	28
One Stop Hire	99	1	0
Ord Industrial	30	30	40
Orion Access	10	40	50
Parmount Platforms	31	52	17
PG Platforms	20	40	40
Powered Access Services	40	15	45
Premier Platforms	43	20	37
Select Plant Hire	94	1	5
Smart Platform Rental	10	0	90
Star Platforms	87	5	8
Summit Platforms	16	40	44
Sunbelt Rentals	43	6	51
The Platform Hire Centre	70	10	20
Tracked Access	0	0	100
UK Tool Hire Group	45	10	45
United Powered Access	50	25	25



SAFETY ABOVE ALL

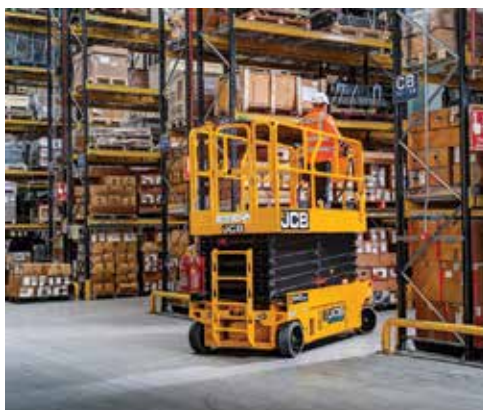
Your partner in reliable, safe and tailor-made solutions for working at height.



TOP 30 RENTAL COMPANIES

COMPANY DETAILS & INVESTMENT

Company	Investment £	Depots	Staff	# Bought	# Sold
1 Up Access	2,000,000	1	45	77	22
Advanced Access Platforms	7,048,000	6	87	N/D	N/D
Access Hire Nationwide	29,400,000	4	255	0	0
Acrolift	40,000	1	4	1	N/D
AFI-Uplift	N/D	18	318	0	0
APH Cranes & Access	450,000	1	10	10	4
Astley Limited	385,000	1	23	22	3
Charles Wilson Engineers	9,000,000	29	390	637	345
Charleville Hire & Platform	3,000,000	1	30	124	46
Clearview Cleaning Services	10,000,000	5	75	15	6
Elavation	1,500,000	2	52	22	0
GTAcess	8,000,000	12	165	0	0
Gwynedd Forklifts	2,000,000	2	60	88	66
Hird	2,396,750	3	108	77	44
Hire Safe Solutions	31,625,000	2	85	427	158
Horizon Platforms	N/D	1	75	0	0
JMS Powered Access	N/D	4	75	0	0
JPS Platforms	975,000	1	35	79	25
KDM Hire	N/D	7	235	0	0
Mainline	6,000,000	1	44	N/D	N/D
Maps Platforms	N/D	1	5	0	0
MEP Hire	8,000,000	13	275	850	100
Mr Plant Hire	1,200,000	3	67	N/D	N/D
Nationwide Platforms	N/D	30	849	N/D	N/D
Newmarket Plant Hire	350,000	6	55	15	2
OK Tool Hire	1,000,000	2	22	74	35
One Stop Hire	600,000	22	270	75	0
Ord Industrial	4,000,000	2	80	102	16
Orion Access	1,100,000	1	45	26	24
Paramount Platforms	1,316,100	2	25	5	2
PG Platforms	1,200,000	N/D	28	24	23
Powered Access Services	640,000	3	39	205	104
Premier Platforms	1,000,000	3	30	0	0
Select Plant Hire	855,000	2	16	109	14
Smart Platform Rental	3,800,000	7	92	N/D	N/D
Star Platforms	4,500,000	7	177	0	0
Summit Platforms	18,300,000	10	308	70	7
Sunbelt Rentals	9,000,000	260	4,400	531	802
The Platform Hire Centre	750,000	1	18	66	0
Tracked Access	1,100,000	1	4	11	0
United Powered Access	1,500,000	1	14	N/D	N/D





No matter your specialisation, you deserve our special attention.

The same dedication that we attribute to the manufacturing of our aerial platforms. No less than 14 models divided into six families, designed to respond perfectly to your requirements and your specific professional needs: **from tree care to the maintenance of buildings, installations and infrastructures; from restoration to work on high-voltage lines.**

Discover the advantages of the CMC range on our website.

CMC
THE SPECIALIFT

www.cmclift.com



TELEHANDLERS

While market leader Ardent maintained the size of its telehandler fleet this year, its nearest competitors made minor reductions, Ardent is now roughly twice the size as the second largest - Morris Leslie Plant Hire. Ardent looks set to

maintain or increase its leadership, having announced a further £50 million investment in 750 new telehandlers for delivery next year, while planning to more than double its 360 degree fleet to around 200 units.



TOP TELESCOPIC HANDLER COMPANIES

Company	Total	Fixed incl Compact and HD	360°	Compact	Heavy Duty	Electric	Largest Fixed	Largest 360°	Depots	Employees	Investment £
Ardent Hire	2,980 ▼	2,871	109	657	2	0	20m	35m	N/D	N/D	N/D
Morris Leslie Plant Hire	1,904 ▼	1,904	0	290	0	0	20m	N/A	15	245	N/D
Sunbelt Rentals	1,846 ▼	1,832	14	317	0	18	20m	26m	260	4,400	19,000,000
UK Forks	1,722 ▼	1,657	65	159	8	17	20m	35m	6	124	N/D
Charles Wilson Engineers	1,603 ▲	1,575	28	250	0	0	20 m	26m	29	390	18,000,000
Hessle Fork Trucks	789 ▲	733	56	48	35	0	18m	35m	4	55	6,550,000
Plant Hire UK	755 -	755	0	20	380	0	20m	N/A	1	20	17,000,000
Greenwood Hire	550 ▲	350	200	0	150	0	10m	35m	9	15	N/D
Jarvie Plant	525 -	498	38	116	381	1	20m	30m	11	205	N/D
H. E. Services	499 ▼	499	0	176	0	0	20m	N/A	11	118	30,000,000
Boles Hire	495 ▲	395	100	95	6	1	20m	51m	1	25	N/D
GT Lifting Solutions	492 ▲	195	297	30	120	0	N/D	39m	3	42	18,000,000
Plantforce	400 ▼	400	0	20	380	0	20m	N/A	7	20	17,000,000
Summit Platforms	393 ▲	393	0	N/D	N/D	N/D	N/D	N/A	10	N/D	N/D
B&T Plant Hire	360 ▲	360	0	60	0	0	18m	N/A	2	30	2,500,000
Ashbrook	328 ▲	328	0	77	0	0	N/D	N/A	N/D	N/D	N/D
Thomas Plant	320 NEW	320	0	120	0	0	N/D	N/A	5	N/D	N/D
Fairfax Plant Hire	260 ▲	260	0	100	0	0	20m	N/A	3	106	12,000,000
Chippindale Plant	236 ▼	236	0	40	196	0	N/D	N/A	8	111	7,000,000
KDM Hire	144 ▲	135	9	48	3	0	N/D	30m	7	235	N/D
Gwynedd Forklifts	138 ▲	138	0	21	0	4	20m	N/A	2	60	600,000
Hubbway Plant Hire	135 -	95	0	30	10	0	18m	N/A	1	N/D	N/D
L Lynch Plant Hire	130 -	80	0	50	0	0	20m	N/A	5	N/D	N/D
Mervyn Lambert Plant	130 -	100	0	30	0	0	18m	N/A	4	N/D	N/D

N/D Not disclosed



- NATIONWIDE HIRE & SALES
- 25 YEARS EXPERIENCE
- MERLO, MAGNI & MANITOU SPECIALISTS
- ROTATING TELEHANDLERS
- HEAVY LIFT TELEHANDLERS
- SPECIALIST ATTACHMENTS
- CONTRACT LIFT SERVICES, LIFT PLANS & RAMS
- CPC TRAINED WORKFORCE
- INDUSTRY LEADING SERVICE BACK UP

Transforming the World of Lifting



HIRE SALES OPERATORS SERVICE PARTS

THE UK'S LEADING HIRE & SALES OF ROTO & HEAVY LIFT TELEHANDLERS



MANITOU
HANDLING YOUR WORLD

MERLO

MAGNI
TELESCOPIC HANDLERS

For all your lifting requirements call GT Lifting
GTlift.co.uk 0345 603 7180

HIREDesk@GTLIFT.CO.UK | SALES@GTLIFT.CO.UK | PARTSANDSERVICE@GTLIFT.CO.UK
 DEPOTS IN GATWICK, LEICESTER, YORK, GLASGOW

GT LIFTING

ACCESS WITH ZOOMLION GREEN

NEW VERTICAL MAST LIFTS

-  High Efficiency
-  Superior Flexibility
-  Compact Dimensions
-  Great Passability

ZMP04
Work Height 5.82m
Platform Capacity 230kg

ZMP06
Work Height 7.91m
Platform Capacity 200kg

ZMP16
Work Height 6.9m
Platform Capacity 227kg

ZMP09J
Work Height 11.2m
Platform Capacity 200kg

VISIT US AT
bauma CHINA
SHANGHAI | NOV. 26-29, 2024
BOOTH NO.: A.63, 65-68, B.58, 66, 68



ZOOMLION ACCESS MACHINERY AUSTRALIA PTY LTD

Phone: 0061(731)-8035300 0061(731)-80350971
E-mail: awp@zoomlion.com
Web: www.zoomlion-access.com

Perth Warehouse: 16 Mallig Way, Canning Vale, WA 6155 (Tel: 0434 743495)
Sydney Warehouse: 10 Holbeche Rd, Amstell Park, NSW 2148 (Tel: 0421 887569)
Brisbane Warehouse: 16-22 Quilton Place, Crystalbrook, QLD 4102 (Tel: 0413 147968)
Melbourne Central Warehouse: 63-65 Ricketts Road, Mount Waverley, VIC 3149 (Tel: 0413978195)





MOVING IN ANOTHER DIRECTION?

Over the past 20 years or so, two Japanese companies - Unic and Maeda - have been at the forefront of the spider crane market, gradually adding new models as the international market for these tiny cranes - originally seen as mere toys by the crane rental companies - transitioned from niche to mainstream. While both have stepped up their pace a little on new product development, in recent years they have been outpaced by European producers such as Jekko and Hoeflon in terms of pure innovation. But are they in danger of becoming overly complicated and as a result less reliable?

The Japanese producers have traditionally tended to be slow to introduce new models or adopt innovative new concepts unless really pushed to do so, and then only after the novel idea has been welcomed by end users. The benefit of this approach is that their products are fairly simple and predictable to use and are virtually bullet proof. There is no money at all in selling replacement parts for them! But more on spider lifts later.

A CHANGING MARKET

The mini crawler crane - virtually a shrunken crawler crane - has been around in one form or other for far longer than the spider crane, both in Japan and parts of Europe. In the UK it was not uncommon to see little cranes on the side of the road in cities like London, lifting things in and out of a hole. In the beginning most were wheeled with fixed booms made by companies like Henry Cooch, but began to be replaced by mini crawler cranes with telescopic booms from companies such as IHI and Hitachi, although a line of British-built models was launched by Sandhurst. Companies such as AGD built up a substantial fleet and several Japanese manufacturers including Komatsu and Kato launched models and the mini crawler crane market took off as most models were based on

a mini excavator platform, at least at the smaller end of the market. Demand in Europe seemed to fizzle out after the millennium and most Japanese manufacturers pulled out. But Meada kept the concept going and as the sector picked up again with Jekko entering the market along with Chinese company Sunward. As numbers begin to grow it looks like it is changing again.

Over the past few years tracked articulated cranes such as the JF range from Jekko, Palfinger PCC machines and BG Lift's CWE range have become increasingly popular, essentially an articulated loader crane mounted on a spider lift type chassis. They sort of fit between spider cranes and mini crawlers and they need outriggers, although most can pick and carry smaller loads.

TRACKED CARRIER CRANES

Another emerging product are small loader cranes with capacities up to about six tonnes mounted on the increasingly popular tracked material carriers. The tracked carriers have been growing in popularity for several years now making it easier to move bulky and heavy materials, particularly on uneven ground or fragile surfaces. However, there is always the problem of how to load the material or item that needs to be moved onto the carrier. A small



A typical spider crane application - a BG Lift M250 ECO lifting in a confined factory production area



A five tonne Sunward SWTC-5D mini crawler crane

loader crane at one end of the bed is the simple answer and several manufacturers now offer such a machine. That concept appears to be developing into a sector of its own.

SPIDER CRANES



Specialist tracked machines include this Marooka fitted with an articulated loader crane

They are tremendously compact and are light enough to be transported to site on a 3.5 tonne trailer and when working have very low ground bearing pressure.

Large, tracked carriers with a chassis cab, such as those made by Marooka have often been built with an articulated loader crane on the back, but these are larger, far more specialist machines with wide tracks for the ultimate 'go-anywhere' capability and more similar to the more recent tracked articulated cranes.

MINI TRACKED CRANES

Elma

A new arrival to the mini crane market sector is the Platform Basket group company, Elma. It currently offers two ranges of mini cranes, which it describes as either 'stabilised' or 'pick & carry'. The basic PCR10 crawler has a 1.1 tonne capacity on its deck which also has fold down sides that can be used either for retaining the load or folded flat to almost double the deck width to 1.54 metres.

The entire range has extendible width tracks - from 700 or 790mm wide to 1.18 metres. They are offered with an engine, usually petrol, or a form of hybrid version with the addition of a single phase 220 volt AC electric motor, while a lithium ion battery powered option is also available.



Elma PCR12 with 990kg capacity crane

The PCR12 is a PCR10 with the addition of a 1.2 tonne metre telescopic loader type crane with four section boom, with the option of a fifth manual section for a maximum tip height of around 5.5 metres, a winch or other attachments for applications such as glass handling. The unit can lift 990kg towards the front end of the deck and 150kg at its maximum radius of 4.2 metres. It is a compact unit with an overall retracted width of 790mm, an overall length of 2.52 metres and is 1.68 metres high.

The MCR30 and MCR40 are three and four tonne mini tracked cranes with two stage spider type outriggers taking the working foot print to 3.85



Elma MCR30 can lift 995kg at 2.65 metre radius

metres by 3.88 metres. On its main boom it has a maximum tip height of 6.7 metres or 8.55 metres with the two manual sections extended. It can lift 995kg at radius of 2.65 metres and has a maximum radius with the boom horizontal of 6.82 metres at which it can handle 250kg. Like the PCR they can be used with a winch and attachments. However, both MCR models can be used without the outriggers as small pick & carry cranes, but do not have any deck carrying capability. All the MCR models have full radio remote controls for the crane and attachments. The MCR30 has an overall width of 790mm, an overall length of 2.22 metres while weighing 1,400kg.

Largest in the range is the four tonne/metre MCR40 which can lift 2,100kg at a 1.87 metres radius or reach 7.1 metres at which point it has a capacity of 400kg. Maximum tip height on the five section boom is 8.3 metres, while a manual section takes this to 9.3 metres. Overall length is 2.54 metres with a total weight of around 1,500kg depending on power source.



A 1,500kg capacity Hooka mini tracked crane

Almacrawler

Having made its name with its dynamic self-levelling Bibi scissor lifts and more recently its Jibbi Primo boom lifts, Almac/AlmaCrawler has introduced a range of five 'Multi-Loader' tracked carriers with capacities from 1,500kg to 6,000kg, two of which feature the 'Bi-Levelling' system capable of keeping the deck level when travelling across uneven ground or slopes of up to 20 degrees.

The six tonne capacity Multi-Loader 6.0 BL and three tonne Multi-Loader 3.0 BL both feature the auto levelling system, however it is only recently that the larger machine has the capability of adding a 990kg capacity crane attachment.

The Multi-Loader 6.0 BL is a sizeable bit of kit weighing 2,400kg or 2,900kg with the crane

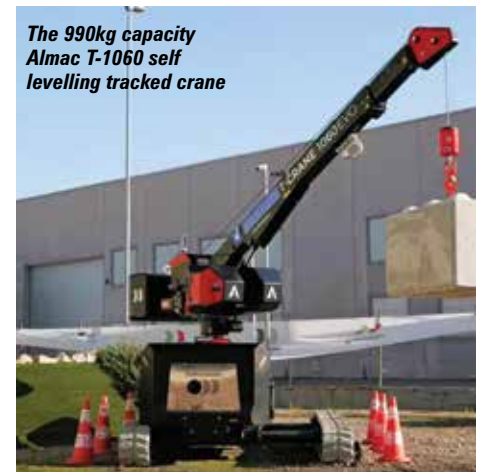


The Almac Multi-Loader 6.0 BL

installed. The deck payload is reduced by 500kg with the crane fitted, but is still a healthy 5,500kg. The unit is battery powered with a 48 volt system, and a battery pack that according to the company can be recharged from 20 percent to full in around seven hours. Direct electric track drive motors are both powerful and efficient, while the machine is operated by radio remote control. Deck size is 2.4 by 1.11 metres, while the unit has an overall width of just less than 1.5 metres with the tracks retracted, extending to 1.8 metres when they are fully out. The deck height ranges from 920mm to 1.28 metres depending on track extension - high when narrow, low when wide.

Longitudinal levelling is 20 degrees at the front, 15 degrees at the rear and 15 degrees laterally. Gradeability is 25 degrees and maximum speed is 3.6kph. The four section boom has a maximum tip height of seven metres and a maximum radius of 4.3 metres at which it can lift 300kg with an up & over height of almost three metres. The crane kit can be removed when not required, allowing rental companies to offer it as an option.

Almac also launched the 990kg capacity T-1060 self-levelling tracked crane at the end of last year. It can handle its maximum capacity at a 3.5 metre radius and a maximum tip height of 7.7 metres at which it can still handle 990kg. The maximum radius is 6.1 metres with a capacity of 450kg. The winch is included with 30 metres of wire rope.



The 990kg capacity Almac T-1060 self levelling tracked crane

The crane is mounted on rubber, non-marking tracks with a retracted width of 1.35 metres extending to 2.45 metres for maximum stability. If one track is left fully in while the other is fully extended the overall width is 1.9 metres. The



EMISSION-FREE. SUSTAINABLE. COST-EFFECTIVE.

THE TADANO E-PACK. ELECTRO-HYDRAULIC SYSTEM FOR ZERO-EMISSION CRANE OPERATION.

Exhaust and noise emissions are playing an increasingly important role in many applications, with large cities and nighttime work leading the charge. Thanks to their compact dimensions, AC cranes are often used in dense urban areas, at nighttime, and indoors. That is where our environmentally friendly solution to these challenges, the innovative e-Pack, comes in. It can be quickly connected to AC cranes and features an integrated electric motor that allows for zero-emission crane operation while significantly reducing noise levels. It is particularly well-suited for use in sensitive areas where stricter emission standards apply so that using a conventional diesel-driven crane is impossible.

Available for: AC 3.045-1 City · AC 2.040-1 · AC 4.070-2 · AC 4.080-1

SPIDER CRANES

overall length is 4.32 metres - slightly shorter if the 1,000kg counterweight is removed. The overall height is 1.91 metres. Power comes from either a Yanmar diesel or a 300Ah lithium ion battery pack. Total weight is 3,850kg or 2,850kg without counterweight - the battery machine is around 60kg heavier.

A key feature of the crane is its self-levelling ability, taken from the scissor lifts, with automatic dynamic levelling of plus or minus 15 degrees in both axis. The crane is operated via a compact remote controller, complete with information screen.

TRACKED CARRIERS

Built in the UK in Tiptree, Essex, Tracked Carriers produces a range of five tracked carriers from the 300kg capacity 300 L to the 4,000kg 4000 PRO. All are battery powered and have fully proportional radio remote controls, 45 degree gradeability and travel speeds from 1.1 to 3.5 km per hour.

A wide range of accessories for the carriers include a fifth wheel and a dolly for transporting long and heavy loads. The dolly - available on the 1200 and 2200 R/PRO models - is manually steerable and gives an additional 1,000kg capacity. Also available on the same models is the rotating platform making it easier to manoeuvre loads through awkward spaces, an A frame stillage for moving sheets of glass and other panel materials, a dozer blade, corner posts, tow bar, winch, stair climbing kit, pallet cradle, pivot bearers and the AC1200 crane attachment.



Tracked Carriers
1200 PRO with
AC1200 crane
attachment



Tracked Carriers attachments
including A frame stillage and dolly



BG Lift M 060 with glass handling attachment



Penny Hydraulics PH110 trailer crane

MINI CRANE HIRE

DELIVERY ANYWHERE IN THE UK



Battery operated
mini cranes

0116 283 4749
hiredesk@liftltd.com
www.liftminicranehire.co.uk



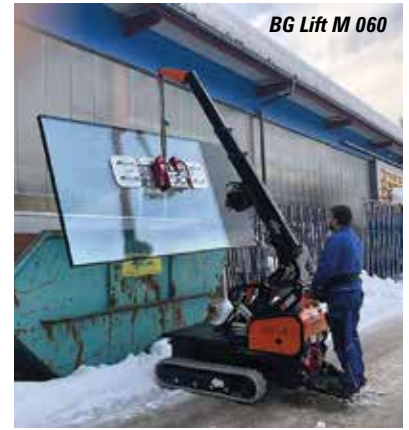
Power for the crane attachment is taken from the smart auxiliary output socket featured on all 1200 PRO machines. This provides power on demand for the hydraulic pump within the crane and also disables drive functions once the crane is operational.

MOVEX INNOVATION

In Quebec, Canada, Movex Innovation produces the XC-270 Cross-country mini crawler crane. Based on its XC-30 All Terrain carrier, the crane is also available as the TT-270, a stair climbing crane based on the company's TT-66 stair climbing chassis.



The XC-270 can lift 500kg at five metres



BG Lift M 060

BG LIFT

As well as its larger capacity CWE articulated crawler cranes, BG Lift offers a Mini pick & carry crane - the M 060. With an overall retracted width of 780mm extending to 1.1 metres, an overall length of 1.78 metres and an overall stowed height of 1.44 metres, the M 060 has a three section hydraulic boom capable of 50 degrees slew - 25 degrees either side of centre - with a maximum 580kg capacity at 1.3 metres. Maximum radius is just over three metres at which point it can handle 240kg and maximum tip height is 4.3 metres with a 320kg capacity. The standard diesel powered crane weighs 720kg to which 200kg of additional counterweight can be added, along with options such as the 230V electric plug in motor and a 500kg capacity winch which take the overall weight up to around a tonne. A lithium ion battery powered version - the M 060 Li-ion - is also available, as is a Scanreco radio remote controller with display. ■



Movex Innovation XC-270

The XC-270 has a capacity of 950kg at a radius of 2.7 metres to the front and 500kg at five metres. With the optional 1.2 metre manual extension it can lift 350kg at six metres. Maximum payload on the deck is 1,000kg.

The XC-270 has an overall length of 2.05 metres, is 775mm wide and 2.25 metres high. It weighs 1,300kg and has 229mm of ground clearance. Options include a portable winch and capstan.

Movex says the crane is ideal for moving pad mounted transformers, as well as plant maintenance duties in the mining sector, transporting and installing components such as pumps, motors, conveyor parts etc in factories, moving generators in confined spaces or moving structural beam, doors and glass for installation. Both models are battery powered and wireless remote controlled.

HOEFLON®

The most precise crane. Suitable for any job.

Together with our German dealers W. Schnitger GmbH and Fokker Group we are at the:

Glasstec, Düsseldorf
22 - 25 October
Stand 11A03



Order your ticket here

hoeflon.com
sales@hoeflon.com
+31 (0)342 400 288



Hoeflon. Good job.



Kranlyft
Group

**COMPACT AND
MINI CRANES AND
BORN FROM JAPAN**



MC174C



MC285C-3



MK1033CW-1



MK305C



MC305C-3



MC405C-3



MC815C

AND VERSATILE ID CRAWLER CRANES ANESE TECHNOLOGY



eco
Electric Power

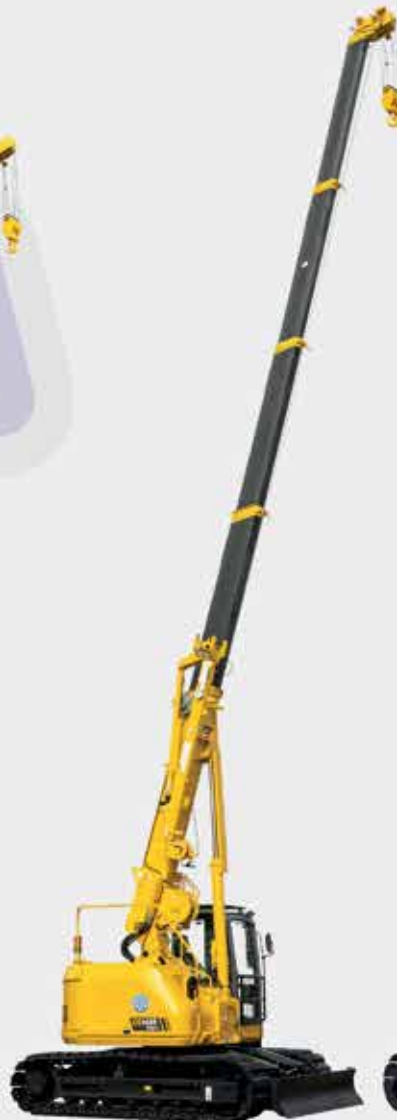
53CB



CC423S-1



CC985S-2



CC1485S-2



CC1908S-1

Hird's first electric MK3053-C proved very effective for steel and screen installation work



Hazlewood Trailers has produced a two axle trailer specifically to carry a MK3035-C

NEW MAEDA MK3035-C PROVES POPULAR

The latest Maeda spider crane was given great prominence at Vertikal Days by European master distributor Kranlyft. Nick Johnson reports.

The new Maeda MK3053-C spider crane received its UK exhibition debut at Vertikal Days 2024 with three units prominent on the Kranlyft stand. The buyers of this trio were AMC (with bases at Knowsley, Liverpool and Heathrow), Lift Assist of Northfleet and Lift Micranes of Leicester.

The 2.98 tonne maximum capacity MK3053-C is a new addition to the range of Maeda spider cranes from Japan, slotting in above the popular MC305C-3 to provide a higher maximum lift height and new features.

The MK3053-C can lift up to 12 metres on its fully extended five section telescopic main boom and up to 16.95 metres using its articulated, three section telescopic fly jib which can be stowed under the main boom to minimise transport width or be easily removed by one person to maximise main boom duties.

Maximum capacity on the retracted jib is 1,000kg at a hook height of 12.5 metres when the main boom is fully extended and elevated. All lifting duties are with the crane supported on its four variable position outriggers, and to provide safe lifting the crane is supplied with Maeda's own Load Moment Indicator.

With fully proportional remote controls the crane folds to provide overall stowed dimensions of 780mm wide, 3.2 metres long and overall height of 1.95 metres. The rubber tracks can be extended to a maximum width of 1.05 metres providing more stability when travelling. The unit features variable outrigger settings and a one button set-up feature as well as a self-stow function.

Customers have a choice of three power options - diesel, diesel/electric and lithium battery - with operating weights of 2,880kg, 2,900kg and 2,880kg respectively. These use a 7.2kW Kubota Z482-E4B diesel engine, a 4kW electric motor and a DC55V-135Ah, 7.4kWh lithium titanate battery pack. The battery powered crane can be charged during operation and there are various charging options. Coming soon is an additional standalone wheeled battery pack which doubles battery capacity.

The first company to buy a new MK3053-C in Europe was Hird Mini Crane Hire of Doncaster, Hull and Redhill in England. A notable first job for this landmark unit was at the 13,780 seat First Direct Arena in Leeds.

The battery operated MK3053-C successfully lifted steel frame elements weighing 150kg to support an LED screen above an entrance at a height of 12 metres. The crane then lifted the screen over a safety rail and onto a mezzanine deck. Good use was made of the machine's reach and its non-marking tracks, which avoided leaving black scuff marks on the arena floor.

Hird now has two battery powered MK3053-Cs in its extensive hire fleet and has two more on order. Lift Assist has one battery and one diesel electric MK3053-C, AMC has two battery versions - with two more on order - Reach Access has a battery powered unit, SGS Plant Hire is buying a diesel unit and KDM Hire has a diesel/electric version on order.

To add to the MK3053-C's appeal, Kranlyft has



The three MK3053-Cs at Vertikal Days had been bought by AMC, Lift Mini Cranes and Lift Assist

worked with Hazlewood Trailers of Rous near Evesham to develop a trailer specially for the new spider crane. Based on Hazlewood's proven 3500ACD plant trailer, the new two axle carrier is designated the 3500ACK. It has a gross weight of 3500kg and internal bed dimensions of 3,050mm long by 1,370mm wide.

The 3500ACK Maeda spider crane trailer has been made with a shorter drawbar than a general plant trailer. It also has sockets welded into its corners to take a support frame for a machine cover being offered by Kranlyft. This cover will have the option of incorporating customer names and logos - a good way for crane hire companies to advertise themselves to potential customers. ■



GOUWEELEEUW

The power of perfection



www.gouweleeuw.com/en

No project too big or too heavy!

Gouweleeuw: The paint shop for vertical transport!

About Gouweleeuw

Specialized in painting:

- Mobile cranes
- Excavators
- Crawler cranes
- Aerial platforms
- Tower cranes
- Other heavy equipment

We work daily on assignments for leading manufacturers such as:

- Tadano
- Liebherr
- Sany
- Manitowoc
- Kobelco
- Spierings

But of course we also work for importers, dealers and end users (both new and used equipment) such as:

- Global Crane Services
- G. O'Brien Crane Hire Ltd.
- Allelys Installations Ltd.
- Kavanagh Crane Hire Ltd.
- DM Cranes Ltd.
- Osprey Marine Ltd.

Transport service

Have you bought a crane in Europe? First have the crane sprayed in your corporate colours at Gouweleeuw!



If desired, we can take care of the transport of the crane. We arrange international transport as well as transport from the port to Gouweleeuw and back.

Recent project

Liebherr LTM 1750-9.1



Phone number
+31 (0) 527 252 307
+31 (0) 6128 436 37



Email address
info@gouweleeuw.com



Visiting address
Ondernemersweg 14
8304 BH Emmeloord

eWorker 25.5

100% Electric, 100% Performance



LIFT CAPACITY
2.5



LIFT HEIGHT
4.8



RUN TIME
8 Hrs

Welcome to the sustainable way of working with the Merlo eWorker. Zero emissions, zero noise, zero use of fossil fuels. Fitted with a fully recyclable LA battery pack the eWorker demonstrates that at Merlo, green is more than just a colour. For more information contact your local Merlo dealer today.



MERLO
UK



Having an underslung fly jib rather than a side folding fly contributes to a narrower travel width



The new UM325 Pop-Up (right) offers greater up-and-over lifting capability than a URW-295-2



The Pop-Up feature of the new UM325 allows the lower pivot point of the main boom to rise up over the central slew ring



LATEST UNIC REARS UP

Called the Pop-Up, the latest Unic spider crane features a rising boom pivot point to provide greater operational flexibility. Nick Johnson reports.

The highlight of the GGR Group stand at Vertical Days 2024 was the new battery powered Unic UM325 Pop-Up spider crane. As the Pop-Up name suggests, the feature that sets this model apart from existing Unic spider cranes is its substantial base boom riser. This articulating section enables the main boom pivot to be elevated up over the centre of the chassis in order to increase lifting height and provide a more extensive lifting envelope with a greater up-and-over capability. When the riser is fully lowered, the main boom pivot moves towards the rear of the chassis allowing longer main boom sections to be carried without increasing the machine's overall length.

Having a central slew ring and articulating base boom riser allows the UM325 to have its fly jib stowed under the main boom rather than being carried on one side. This neat arrangement means that there is no obstructive side projection.

The crane's development has resulted from the very close cooperation between the Japanese manufacturer and its UK based distributor Unic Cranes Europe, part of the GGR Group. The machine was first seen in prototype form preliminarily designated as the URW345 and following extensive testing is now available for sale from Unic Cranes Europe whilst GGR is putting units into its own hire fleet.

The compact crane has a maximum capacity of 3.2 tonnes on its five section, 10 metre main boom at a radius of 2.2 metres. Extra height and reach can be obtained by using the newly introduced four section telescopic luffing jib that extends from 2.0 to 5.7 metres. There is also a searcher hook attachment and the articulating jib provides offsets from -10 to +80 degrees. This wide angular range allows loads to be picked up close to the crane's chassis or placed at a maximum working height of 17.5 metres or at a maximum radius of 15.7 metres.

Maximum capacities are obtained when the UM325 Pop-Up is supported on its four 'spider' legs which come with auto levelling. Each stabiliser can be positioned in any of five angles

and with three different extensions. This flexibility allows two legs to be positioned in-line with the chassis so that, aided by the minimum rear tailswing achieved by use of base boom riser, the crane can work safely beside a wall or other vertical obstruction.

Complete with 360 degree continuous slewing, the UM325 weighs 3,830kg and its non-marking rubber tracks extend to a maximum width of 1,110mm. In transport mode the machine is 750mm wide, 3,130mm long and 1,945mm high.

Power for the UM325 is a 159Ah lithium-ion battery and it can continue to operate whilst being recharged. Full recharge times are up to 6.2 hours on 110V and three hours on 240V.

An important feature is its advanced Rayco Wylie i4500 load moment indicator. Utilising a nine load chart system, this indicator detects the selected operational configuration of the crane allowing for min, mid and max extension for each of the four individual outriggers.

The high-resolution i4500 colour screen shows each setup as well as working zones, lifting capability and diagnostics information. Additionally there are warning lights and audible warnings and an motion cut-out to prevent the crane from being over loaded. In restricted areas the crane has selectable slew and height limitation as standard.

The crane can now be supplied with a latest Scanreco radio remote control unit which can operate for up to eight hours before recharging. The controller can be stowed in a special cradle on the front of the crane and there is a place for the controller's charger on the side of the crane.

Setting up the machine for maximum lifting capability using the outriggers is aided by the deployment of the



The UM325 Pop-Up can now be supplied with this Scanreco radio remote control unit.

standard auto levelling system. Raising the base boom riser increases the main boom pivot point from 1.28 to 1.90 metres above the ground. This original feature provides a greater lifting envelope as well as greatly reducing the rear overhang to allow the crane to be used closer to walls and other vertical obstructions.

The articulating fly jib can be conveniently angled back towards the base of the crane so that loads can be raised or lowered close in. Another useful bonus is the ability to lift and move loads free on tracks at reduced travel speed in order to carry out pick and carry work.

With the Pop-Up concept being well received by potential customers it is certain that other Unic models will adopt it in the future. Meanwhile, Unic Cranes Europe has launched two new versions of the URW-546-2 and URW-295-2 spider cranes that each gain a new telescoping luffing jib and a searcher hook attachment. ■



The machine's well protected 159Ah lithium-ion battery pack is completely demountable



There is secure stowage on the crane for items such as the different hook blocks



The advanced Rayco Wylie i4500 load moment indicator has a very clear display screen

AR18JE

ARTICULATING BOOM LIFT

bauma CHINA

NOVEMBER 26TH-29TH, 2024, SHANGHAI

BOOTH NO. **C.40**

- Max. working height: 20.12m, max. horizontal outreach: 10.9m.
- Dual-capacity design of 260/350kg boosts productivity.
- Four-wheel drive and full-time floating provide exceptional off-road capability.
- The three steering modes make it agile in tight spaces.
- The advanced electrically proportional control system ensures smooth driving and accurate positioning.



LINGONG HEAVY MACHINERY CO., LTD.

Address: No. 2676, Kejia Road, Jinan, Shandong, China
Email: sales@lmgm.com.cn Tel: +86 531 6787 9283

LGMG Europe B.V.

Address: Donker Duyvisweg 301, 3316 BL Dordrecht, The Netherlands
Email: sales@lmggeurope.com Tel: +31 850 642 777

www.lmgglifts.com



RELIABILITY IN ACTION



BARKING UP ANOTHER TREE?

Last month's three day forestry and arb show - the APF Exhibition - held at Ragley Estate in Warwickshire, UK, was a good indicator of the access related trends and demands of the professional arborist.

The show itself attracted about 20,000 visitors and 300 exhibitors and featured a good few access equipment manufacturers and distributors aiming to benefit from the growing market. Cranes & Access visited the show 18 years ago when it featured just a few platforms such as a 12.5 metre Land Rover style 4x4 Santana/SkyHigh joint venture built by SkyKing, a Teupen Leo 23GT owned by Trac-access, IJ Access showing Lionlift spiders, a 16 metre Italmec and Promax Access - still the Platform Basket distributor in the UK - showing a variety of equipment including a tractor, truck and trailer mounted units. How times and the access industry have changed since then!

Over the subsequent years spider lifts and 4x4 pickup mounted lifts have become the arborist's access equipment of choice, although more recently the market has seen increasing demand for truck mounted lifts with working heights from 20 to 35 metres.

Increasingly strict safety legislation coupled with an aging workforce - unable or unwilling to climb trees - have forced many companies to seriously consider using powered access for tree work. Other factors include the fact that it is safer and can be significantly quicker than climbing.

Tree work is one of the more dangerous market sectors, with frequent injuries and even fatalities. In an effort to reduce incidents, IPAF produced a Technical Guidance document in 2022 entitled 'Safe use of MEWPS to manage trees and vegetation' (TE-1107-0822-1-en) which highlights hazards from planning, workplace inspection and pre-use check through to operation and shut down.

A DIFFERENT VIEW

Because of the nature of the work, arborists look for specific design features in an aerial work platform compared to general rental users and are more likely to buy than rent. An aerial lift is however one of the most significant investments made by an arborist and it is therefore critical that they get the right machine. The person making the buying decision is often the user and they know exactly what they want in terms of specification - a robust machine with good protection for major components, such as hoses and cables, control panel and cylinders etc.. A solid lifting mechanism with a stable platform which contributes to a general feeling of security is also important, particularly when operating chain saws.

Spider lifts are ideal for tree work, being able to manoeuvre in tight spaces and on uneven terrain. Their compact design and manoeuvrability also make them perfect for urban areas or densely wooded locations alike, as well as being narrow enough to fit through a standard doorway and track down the side of a house to reach rear garden jobs. However, the narrow width also means that extra care has to be taken when travelling to avoid overturns, particularly on uneven or sloping ground. Of course, it goes without saying that when in operation, there should be adequate care taken over the ground with suitably sized outrigger mats on board.

In recent years there has also been a demand for larger spider lifts that can be transported on a two axle 3.5 tonne trailer. In the UK Towmate Trailers recently launched a new trailer specifically designed for the 18 metre Hinowa LL18.80 spider



The 4x4 pickup mounted lift is very popular with arborist's

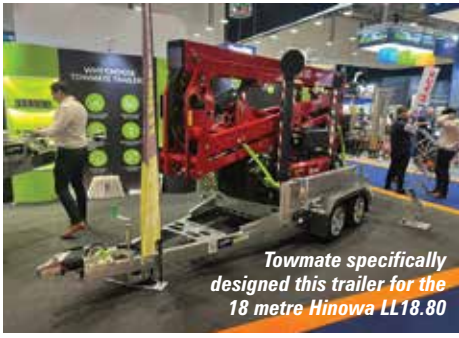


Spanish company Mecaplus specialises in platforms for arborists - this is the 12 metre P12



Adequate care must be taken when with suitably sized outrigger mats. Photo courtesy of Hoover Fire Dept.

lift which weighs 2,950kg, however some lifts of around 23 metres are coming in at a similar weight allowing them to be towed behind a 4x4. Another increasingly popular accessory is a winch that replaces the basket to create a spider crane.



Towmate specifically designed this trailer for the 18 metre Hinowa LL18.80

INSULATED SPIDERS

One of the main safety issues for arborists is the presence of overhead power lines, particularly in North American where high voltage overhead lines are more prevalent. Spider lifts with fully insulated booms offer protection to those working from the platform and below. Only a few of the 20 or so spider lift manufacturers offer insulated machines. Platform Basket was one of the first with its 17 metre PB18.90.46kV in 2012 to meet demand from the USA, its largest market. It added the 22 metre Spider 22.10.46kV in 2018 due to increased demand in the region. Other manufacturers offering 46kV insulated spider lifts include Omme Lift's 26.5 metre model, 22 metre Bluelift and the 23 metre CMC with Chinese manufacturer Goman now offering an 18 metre 10kV version.

TRUCKS NOT SPIDERS

For those arborists not needing a go-anywhere platform, a small truck mount is proving a popular option, being ideal for urban applications such as pruning or clearing overgrown trees from public ways. They are also ideal for travelling rapidly to



Platform Basket Spider 22.10.46kV insulated spider lift

site, completing the work and returning to base. A small but growing number of vehicle mounted lifts are now fully electric, although hybrid models featuring a diesel engine powered chassis and a battery operated boom are becoming the norm in some regions due to the low noise levels which also aids good communication between ground and basket.

UK manufacturer Aldecote offers the CZ140, CZ150 and CZ160 pickup mounted lifts with working heights of 14.1, 15.2 and 16.2 metres with outreaches of 6.8, 7.6 and 8.1 metres respectively. All have a platform capacity of 250kg and weight just over three tonnes when mounted on a Ford Ranger, Isuzu D-Max or Toyota Hilux chassis. The CZ range features E-Drive - a self-charging hybrid electric system - which is said to



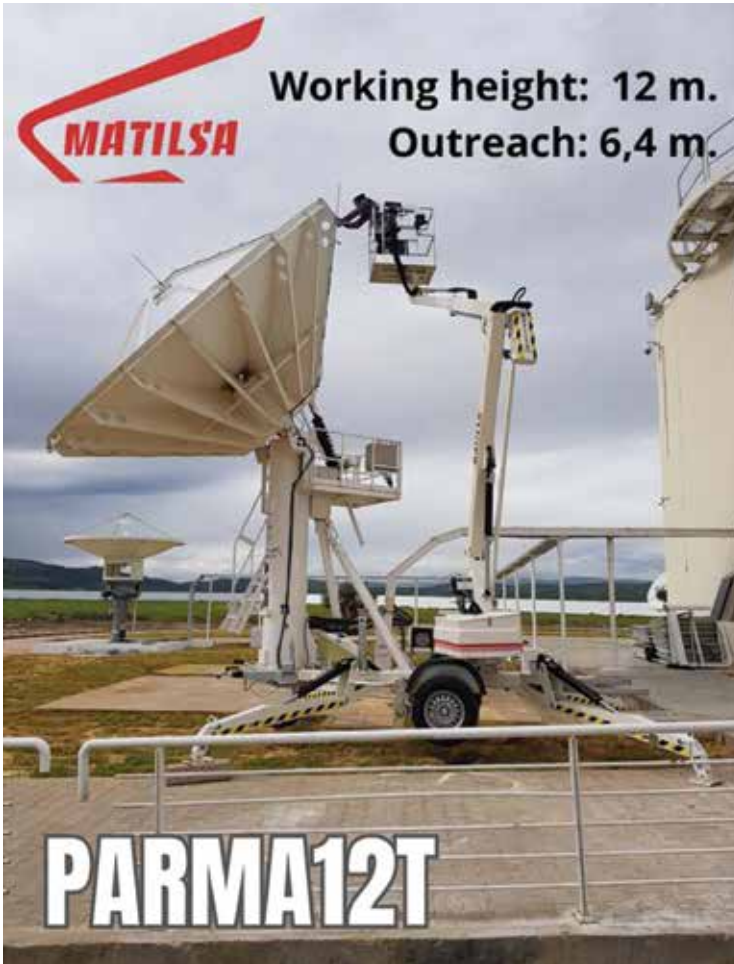
A CTE Zeta 24 J articulated truck mount being used for pruning

be far more efficient and cleaner than traditional PTO drive systems. The lead acid batteries recharge while travelling eliminating the need for external power sources. It is compatible with both diesel and fully electric chassis.

Engines typically provide far more power than is needed even when idling meaning 90 to 98



UK manufacturer Aldecote's CZ range features a self-charging hybrid electric system - E-Drive



Working height: 12 m.
Outreach: 6,4 m.

PARMA12T



FOR THE MOST DEMANDING MAINTENANCE



www.matilsa.es



A 360 degree telehandler with an attachment such as a grapple saw is one way of tree felling or trimming from the ground

percent of fuel is wasted with diesel engines when running a platform with most of the excess dissipated as heat.

Aldercote says it started with a blank sheet of paper when designing the hydraulic system for its CZ models in order to make them as efficient as possible when driven by the electric motor. The average over the cycle is only 800W. If the time spent at full reach is three minutes, the average requirement falls to 250W. The solution therefore only requires two conventional lead acid batteries. They can power around 20 lift cycles on one charge before the engine needs to be switched on to recharge which can happen when travelling. Aldercote is also trialling lithium-ion batteries which are 10kg lighter and can offer up to 50 cycles per charge.

Another new 4x4 pickup mounted lift is the 13.4 metre working height Socage Forste 14A, the demonstration unit was unveiled at Vertikal Days. With a platform capacity of 230kg it has an unrestricted outreach of 7.1 metres and features straight leg jacking and is only available on an Isuzu chassis. Socage also says it is aiming to produce models the UK in the near future.

ALTERNATIVE EQUIPMENT

The best way of avoiding working at height is to remain on the ground. One of the more unusual pieces of equipment for an arborist for tree felling or trimming is a 360 degree telehandler fitted with a grapple saw attachment. Larger 360 degree telehandlers - with say six tonnes capacity and 30 metre lift height - can be equipped with an attachment such as the Westtech

Woodcracker CS750 or CS580 which allows the machine to grab and hold a trunk or branch of up to 750mm in diameter then cut it using the integral saw. The severed limb is then lowered to the ground. With most 360 degree telehandlers this can also be done with the remote controller allowing the operator to leave the cab for a better view and improved safety. The machine's dedicated load chart for the attachment allows the operator to see the weight of the load and



A 30 metre/five tonne Merlo Roto 50.30 S Plus with Woodcracker CS750 Smart grapple saw attachment



PLATFORM BASKET

RELIABILITY, STRENGTH AND HIGH TECHNOLOGY

RAISING THE STANDARDS

Platform Basket offers an unrivalled range of aerial working platforms, globally recognized for their versatility, ease of use and reliability.

PLATFORM BASKET

Via Montessori, 1 - 42028 Poggio (RE) Italy
 Ph. +39 0522 967666 - Fax +39 0522 967667
 E-mail: info@platformbasket.com

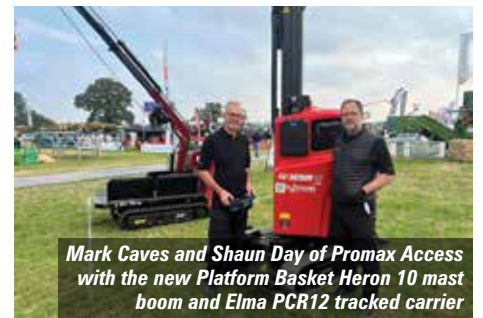
platformbasket.com
MADE IN ITALY



APF 2024 - A NEW HIGH!

The 24th bi-annual three day APF Exhibition - which this year took place at the Ragley Estate in Warwickshire at the end of last month - welcomed 20,000 visitors and 300 exhibitors. The verdict of many was that it was the 'the best show to date'.

Over the years the show has seen a growing arborist presence and in particular, an increasing number of aerial work platform exhibitors showing spider lifts, 4x4 pickup lifts and truck mounted platforms. As well as the extensive range of forestry and arb equipment there were plenty of events including the Husqvarna World 25 metre Pole Climbing Championships, the new APF Tree Climbing Challenge, axe throwing, chainsaw carving and the UK Lumberjack Championships. A woodland craft area displayed traditional crafts and skills from clogs to coracles, oak swill baskets to dug out canoes. The show returns to Ragley Estate on the 24/25/26th September 2026. Here a few of the exhibitors at this year's show.



Mark Caves and Shaun Day of Promax Access with the new Platform Basket Heron 10 mast boom and Elma PCR12 tracked carrier



Multitel spider and truck mounted lifts



Socage Raptor spiders on the DJB Machinery stand



Easy Lift spider lift and Socage truck mount on the International Access Sales' stand



Sany's new 14m/4 tonne STH1440 telehandler



An Oil & Steel truck mount on the Hird stand



(L-R) Martin Bridges, Richard Onslow and Dave Spargo of Euraccess - the UK dealer for Cela



GPL showed its popular 4x4 tipper chipper truck



One of the Men's Underhand Chop competitors



One of the many traditional craft stands



A five tonne Merlo 50.35S Plus CV Tronic roto telehandler



Richard Whiting and Martin Wraith on the IPAF stand

THE NATURAL CHOICE FOR WORKING AT HEIGHT



How JLG is meeting the needs of arborists and tree surgeons with its expanding range of compact crawler booms ideal for garden maintenance

JLG is continuously seeking opportunities to expand its compact crawler boom lift portfolio with capabilities to help customers unlock their potential. Its acquisition of Hinowa in 2023 is a prime example of how, once a market need was identified, JLG responded with a solution that not only met that need but also strengthened its offering.

Italy-based Hinowa is the leading manufacturer of compact crawler boom lifts and an access industry pioneer in lithium-ion battery technology. It employs around 200 across two facilities, a 23,000 square metre manufacturing plant and a 5,000 square metre parts facility. The company has produced JLG-branded compact crawler boom lifts for almost 15 years.

The JLG compact crawler boom lift product line offers a large range of sizes, including articulated and straight boom models, and a variety of power options including engine, electric and bi-energy. Notable recent introductions include the X26AJ and X33AJ models and a new straight-jib model, the X22SJP/X22S JL.

For garden maintenance operations, and tasks such as tree inspections and surveys, tree pruning and reduction, and tree felling, the X20J Plus and X22SJP are ideal. They strike the perfect balance of compact size (stowed width 0.8m), working height (20.05 - 22m) and horizontal working outreach (9.70 - 12.55m), which is extremely important for arborist work. Minimal emissions and noise pollution are highly advantageous as it means less disturbance for customers in residential areas.

Highly versatile

Thanks to the slim design, they can fit through narrow gates and on paths to easily access rear gardens. The low weight makes them easy to transport from one site to another and suitable for operation in weight-restricted areas.

Easy to manoeuvre, users can position the basket precisely to ensure trees are cut from the right position, without compromising safety, and the tree is reduced in the optimum way, ensuring its long-term health.

JLG compact crawler booms are a safer and more productive alternative to traditional methods – it can take half a day to complete a job with the

X20J Plus compared to two days when climbing with ropes. This enables arborists to respond quickly to their customers' requests, take on more challenging projects that other companies cannot, and maintain competitive prices by reducing their time spent on site. The auto-levelling outriggers can reduce set-up time significantly, for example.

"At JLG, we frequently receive feedback from the field about the operating experiences users have with this type of equipment," says Nicola Sacchet, JLG EMEA Product Manager. "We listen and continue to carefully consider design cues that not only meet the needs of our customers but also address their wants.

"When it comes to future introductions to our compact crawler boom lift product portfolio, we will continue to evaluate our product offering with the market need, and we remain committed to considering options that meet those needs, including introductions that fill gaps in the line or extend the range."



For more information, please scan the QR code:



JLG compact crawler booms are ideal for garden maintenance operations

What is Refinance?

Refinancing is for anyone looking to unlock the value of their existing assets. Whether you own equipment or are financing it elsewhere, refinancing can provide a quick way to access funds for new equipment, improving cash flow or other business needs.

We understand the industries we work with and we offer a choice of finance options that best suit your needs.

Contact us today

 closeassetfinance.co.uk/cranes



Products and services are subject to eligibility, status, terms and conditions and availability. All lending is subject to status and our lending criteria. The right to decline any application is reserved.

Close Brothers Asset Finance is a trading style of Close Brothers Limited. Close Brothers Limited is registered in England and Wales (Company Number 00195626) and its registered office is 10 Crown Place, London, EC2A 4FT.





BIGGEST & BEST

This year's Vertikal Days was held for the first time at Newark Showground in Nottinghamshire last month and was the largest in the show's 17 year history. More than 330 companies were represented making it the biggest display of cranes, aerial work platforms and telehandlers, along with associated equipment and services this year.

The change of venue resulted in a more linear layout, with the display area stretching around 500 metres along the old Vulcan Runway. The simple two aisle layout received a very positive reaction from visitors and exhibitors alike, helping ensure that visitors did not miss anything by walking down one side, stopping for lunch in the Catering Pavilion then returning up the other side to the exit and car park.

Overall, the weather was sunny, particularly on the second day. Day one was interspersed by showers and strong gusts of wind followed by a heavy downpour and hail which put a dampener on the evening networking event.

Attendance was good with around 3,000 visitors, many of which returned on the second day in order to catch the vast array of new products, technology, associated equipment and to speak with the many companies offering specialist services. This year saw more than 40 new exhibitors representing 50 OEMs, with almost 60 companies in the expanded Marketplace. With so many new products it is difficult to highlight them all in this limited space. However, we will do our best to include everyone in the pictorial review below.

Here is a brief list of machines that caught the Vertikal team's eye.

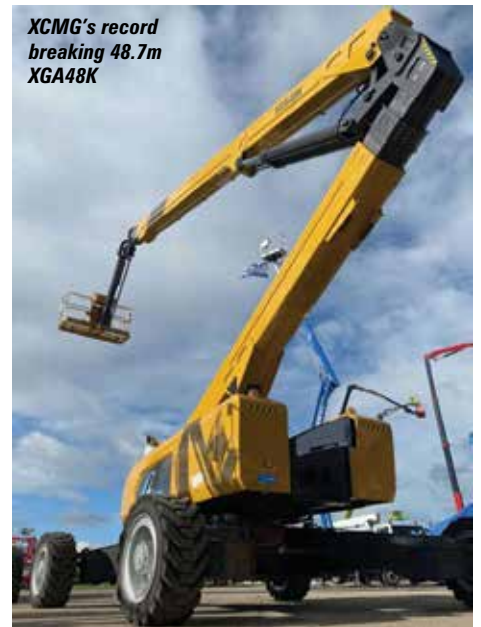
XCMG unveiled a record breaking articulated boom lift, the 161ft XGA48K. The 48.7 metre working height platform arrived from China just in time for its international debut, alongside the record breaking 217ft/70m telescopic boom.

Niftylift unveiled two new products at the event, including its first telescopic boom - the 66ft all electric HR22S with a 22 metre working height - and an improved 33ft 4x4 HR12 boom lift.



Niftylift's new 65ft HR22SE All Electric telescopic boom lift

Socage's distributor Independent Access Sales launched the new 13.4 metre Forste 14A Isuzu pick up mounted lift with 7.1 metres outreach and 230kg platform capacity. The unit has straight up and down jacking and is set to be assembled in the UK.



XCMG's record breaking 48.7m XGA48K



The new Socage Forste 14A pick up mounted lift with Matilde Maccari of Socage and Richard Martin of Independent Access Sales



Jean Harrison and Nicole Engesser provide a warm welcome at the entrance pavilion



Visitors enjoying the Marketplace café



The Star Shade tent area with barbecue

First timers at the show Keith Rhodes Machinery introduced the Landoll telehandler line up from Kansas, USA, with two 20 tonne PT40 models - one with a bespoke jib attachment, the other with heavy duty forks - with lift heights of up to six metres. The machines weigh around 21 tonnes and are said to be 'very competitively priced'.



The Landoll heavy duty industrial telehandler

Haulotte showed several new products including the HA16E - its first 46ft all electric articulated boom with optional range extender - its compact Swift Up push around line up and FASTN lanyard anchorage device.



Haulotte Swift Up 4.5



The Haulotte stand with new products and devices

Liebherr's impressive stand included the first 400 tonne LTM 1400-6.1 in special 75th anniversary livery, and its 150 tonne telescopic crawler, as well as one of its all electric Unplugged lattice crawlers and six other ATs from 40 to 300 tonnes - all HVO ready.



Liebherr's first 400 tonne LTM 1400-6.1 in special 75th anniversary livery



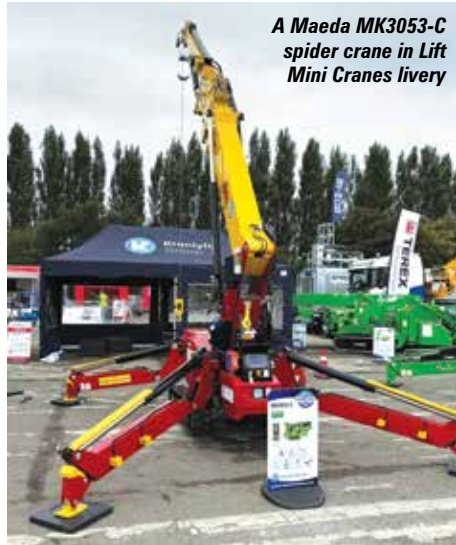
A Liebherr MK self erecting mobile tower crane in Ainscough colours

Kobelco introduced its new 75 tonne heavy duty telescopic crawler displayed along side its 250 tonne lattice crawler with the latest Stage V engine.



The new Kobelco TKE750G telescopic crawler

New spider cranes included Maeda's MK3053-C and Unic's URW-546-2 with hydraulic jib and the Unic UM325 Pop Up crane. It was also a chance to chat with newly appointed Hoefflon distributor Crowland Cranes on a stand filled with four spider and several pick & carry models with capacities from 550kg to four tonnes. Foster Crane & Equipment - the newly appointed distributor for Jekko - also had a packed stand, displaying the latest Jekko attachments and technology.



A Maeda MK3053-C spider crane in Lift Mini Cranes livery



Unic URW-546-2



Part of the Hoefflon UK stand



The Foster Cranes' stand with Jekko spiders

CMC launched the 20 metre S20 spider lift, while new exhibitor Aldercote, showed its latest van mounted and 4x4 lifts. Dingli's extensive display included the new 138ft BA44HRT articulated hybrid boom lift.



CMC stand with new spider lifts



Aldercote's latest van mounted and 4x4 lifts



The Dingli stand with the new 138ft BA44HRT articulated hybrid boom lift in the background

Several new bread & butter articulated booms were launched, with JLG demonstrating its second generation 45ft EC450 AJ, while LGMG unveiled its latest electric models, and Sinoboom also discussed its plans for a UK subsidiary and European production.



LGMG launched the new 65ft SR2024E electric scissor lift



Sinoboom stand



JLG Stand

First time exhibitor Jovoo showed the 45ft V14 articulated boom lift, while MEC highlighted its new Micro scissor lift line up and Manitou had its all new 20ft SE 0808 slab electric scissor lift on display.



L-R: XueDong Qu & ChungChang Li of Jovoo

Platform Basket distributor Promax Access introduced the 10 metre Heron 10 mast boom, a new 18 metre Spider 8.95 Hybrid and an Elma PCR12 tracked mini crane. The newly formed Socage Raptor made its UK debut with its latest model, the 25S spider lift.



Promax Access showed this Elma PCR12 mini tracked pick & carry crane



The Raptor 25S

In terms of new telehandlers Zoomlion and LGMG had units on display for the first time, as did Sany which also showed its three axle 60 tonne SAC600E All Terrain which is beginning to sell across Europe. Other companies with new equipment included Liftroller, Geda and Imer.... the list goes on and on.



One of LGMG's telehandlers next to the catering pavilion



Philip Boddy of Sany with the new STH1440 telehandler



Zoomlion's new telehandler

The CPA and IPAF held meetings during the show, one of which lasted all morning, raising complaints from some exhibitors who felt that they ought to be held the day before or day after. The marketplace was a hive of activity, especially on the first day when it provided shelter during the showers. It was also encouraging to see many new, friendly faces in the industry, reflecting its ongoing change and growth.

Next year's event will again take place at Newark Show ground on the 10th and 11th of September 2025. We hope to see you there!



The Roaming Folk trio serenading ahead of dinner after their outdoor session was rained off



Some of the Vertikal team making the most of the photo booth



Pierino Bravi demonstrating one of his machines on the Bravi stand



Klaas aluminium truck crane on the Kranlyft stand



Skyjack scissors



Electroelsa mastclimber



A brand new Volvo truck with Fassi F660 crane from the Falcon Group's Freight division



Aldercote 4x4 truck and E-Drive self charging van mounted lifts



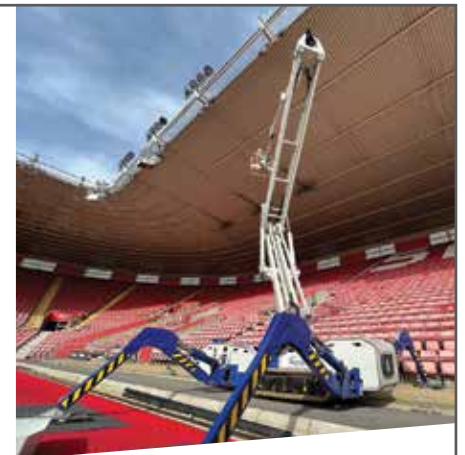
Potain tower crane cab on the Manitowoc stand alongside Grove



Rayco Wylie stand



Mac's Trucks new Beavertail truck body



TELESCOPIC AND ARTICULATED SPIDER LIFTS FROM 13 TO 52 METRES

Spider lifts at a higher level for 40 years





Sinoboom 5389RE scissor



In the Marketplace



The Kobelco stand with new 75 tonne telescopic crawler crane



The Ganterud stand



The new range of Mac-Lift scissors from MacGen Power Generation



Tough-Lift ML15



The Liftroller 1,200kg carrier



Tobias Knichel of Dumarey - previously Punch Flybrid - with its range of green power products



Ruthmann truck mount



Stros Rhino battery box



Tadano highlighted its new hybrid 70 tonne AC 4.070L-1 Hybrid



GSR 220 truck mount



The Latch & Batchelor stand



The CPA team (L-R) Siva Subramaniam, David Smith, Adam Godwin, Steve Mulholland and Rob Squires



Part of the Zoomlion stand

SIEMENS



SIEMENS FINANCIAL SERVICES

Crane & Access Equipment Finance **Made Easy**

[siemens.co.uk/construction-finance](https://www.siemens.co.uk/construction-finance)

Call us on 01753 921 040 to start your financing journey



A Böcker 150kg winch



Part of the Snorkel stand



Niftylift's 120T trailer mounted platform



Mantall's 13ft XE60 Mini ED Plus



Manitou showed telehandlers to boom lifts



JMG full electric pick & carry crane



Platform Basket's Heron 10 made its UK debut



Jekko spider cranes with new distributor Foster Cranes



Philip Richardson and Chris-Trodden of FT Wind Sensors



JLG EC520AJ seen on the APS stand



Mac's Truck with Fassi F820 sold to Blade Access



The Alp Lift material lifts



LiuGong LS1216HC tracked scissor



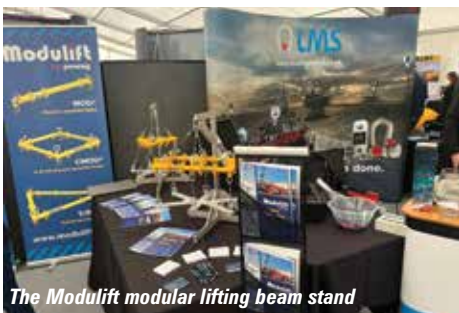
The CLM stand with Maber hoists and mastclimbers



The Hoeflon mini crane stand



The MEC Micro 26-XD with Xtra-Deck step up platform



The Modulift modular lifting beam stand



Some of the Liebherr All Terrain cranes



The Wolffkran stand at night



A Maeda CC985 Stage V mini crawler crane



The Magni stand



The City Lifting stand



The Kranlyft stand



The International Platforms team



Berry Cranes' AK48 being represented on the Bocker stand



(L-R) Harry & Patrick McArdle of Height for Hire with Vertikal's Leigh Sparrow



Spierings SK1265-AT6



A CTE truck mount sold to Smart Platforms



A Geda 500Z material hoist



Another new product launch, the 45ft all electric Skyjack boom lift



Tracked Carriers' tracked carriers



Sinoboom AB16EJ Plus articulated boom



Electroelsa with its automatic built in 'No bolt loose' bolt detector on the mast



The 60 tonne Sany SAC600E All Terrain crane sold to RRC Crane Hire



Certex Lifting Products and Services stand



The 'My Future My Choice' workshops for local schools was back on the agenda in a bid to inspire young engineers



The UniMat stand



The ReesLift push around lift with MECscissors in the background



Tracked Carriers with AC1200 crane option



Mac-Lift MG15 scissor



The 58 metre Zoomlion ZT58T telescopic boom



Aresta safety equipment



LGMG 1840 telehandler



The all electric CTE MP20EV



A busy TVH stand



Axolift Manulift's up to four metres working height



Snorkel SL30RT



Torquer demonstrating its latest device



First time exhibitor Liftroller with one of its products



Falcon Group showed this Potain HUP 40-30 self erecting tower crane



Alimak Scando 650 passenger material hoist

LITHIUM BATTERIES



DRY CELL BATTERIES



GEL CELL BATTERIES



Make the Step Up...

- Reduced Service Calls
- Increased Total Cost of Ownership
- Improved Return on Investment

Discover
Innovative Battery Solutions

WWW.BBLBATTERIES.CO.UK



0808 1680635



The 25 tonne JMG MC 250.09 FL all electric Fork truck pick & carry crane sold to County Lifting



The GGR stand with Faresin electric telehandlers



A selection of low level Power Towers products



The Liebherr stand



Teupen Leo 23T spider lift on a trailer



The centrally located IPAF stand



Ecobat battery stand



Grove GMK5150XL in MGA Crane Hire livery



Haulotte had several new machines on its stand



An SAEclimber mastclimber



JLG's latest ES scissors



Smartlift Outdoor SL309 and SL609 glass handlers



Neargrid was showing off its cutting edge battery systems



Hinowa LL17.75 MK on the APS stand



JCB electric Tele Truck and power pack



Bronto had a good show



A busy Market Place



The B Flats Ukelele band provided the lunchtime entertainment



The Vertikal team

The Cherry Picker Shop promoting its replacement parts service



The new Manitou scissor lifts



The first XCMG 161ft XGA48K articulated boom lift alongside its 217ft XGS70K telescopic boom lift



The Sinoboom stand

SIMPLY ELECTRIC,
SIMPLY MORE

THE NEW RANGE OF BATTERY-POWERED, **ELECTRIC ROUGH TERRAIN ARTICULATED BOOMS** REMAINS SIMPLE AND RELIABLE, WHILE OFFERING AN ENVIRONMENTALLY FRIENDLY AND SUSTAINABLE CHOICE **FOR RENTAL.**

www.skyjack.com

SKYJACK
 simply reliable



THINK SUSTAINABILITY

Sustainability is the practice of using resources in a way that can be maintained over time without depleting them. In action, sustainability might be Google Maps providing fuel efficient routes or alternative transportation options such as public transport, cycling or walking. Even simpler is avoiding the use of plastic bags to keep the oceans clean or installing solar panels.

In the lifting related market almost every company is working towards some form of sustainability, perhaps by reducing CO2 and diesel usage by using batteries, HVO or hydrogen powered machines or by specifying battery storage units to power tower cranes, mastclimbers and hoists.

While governments and the world's car manufacturers have dragged developed markets into Electric Vehicles, most consumers are still unsure of the long term benefits of battery power. Many question the true 'green' credentials of production and how the energy to charge them is produced. Most however agree that battery power is the best current solution for powering small to medium equipment - but the sheer physical size and the weight of the batteries rule them out as sole power sources for larger mobile machines. Because of this many 'experts' agree that diesel combustion engines will continue to be used on larger machines for well into the foreseeable future.

BATTERY SUCCESS

One of the big success stories over the past few years for tower cranes, mastclimbers and hoists has been the growth of flywheel technology and battery energy storage systems. UK construction group Bowmer + Kirkland was one of the first construction companies to recognise the potential for using the flywheel technology developed by Punch Flybrid - now renamed Dumarey Green Power. The technology significantly reduces the size of generator needed to power a tower crane or mastclimber by eliminating the need to allow for the high power spikes required for lift off or high speed heavy lifts, providing enormous fuel and emissions

savings. With diesel prices rising the company saved almost £130,000 in fuel and 106 tonnes of CO2 on just one site.

Since then, many other users of tower cranes have started adopting this technology, while other companies have launched huge battery energy storage systems which not only power the lifting equipment, but also the site offices and welfare units. As well as massively reducing CO2 emissions and fuel costs they can be independent of the national power grid, allowing for a quicker and more cost effective connection. This type of energy storage system only requires a trickle charge during use and can be supplemented with solar panels.

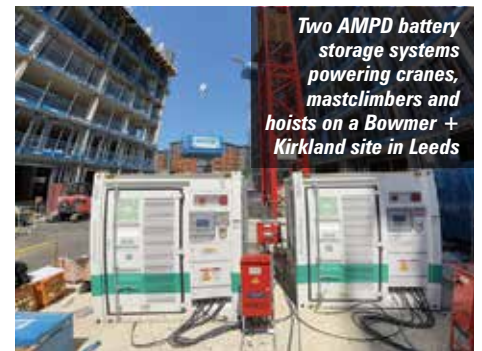
NO MORE DIESEL

One UK tower crane rental company - Falcon Cranes - is now offering an energy storage system to power its cranes and equipment. The Northvolt Voltpack system is made up of a modular battery providing between 281kWh and 1,405kWh of power, storing energy in its batteries from an AC mains outlet or renewable sources, such as solar panels or wind turbines. Recharging can be carried out overnight or the unit can be left plugged into an AC outlet to keep it topped up. Depending on the size of the pack, the batteries can be fully recharged from empty in around four hours on a 125 amp outlet.

Andy Brown of Falcon said: "The Northvolt Voltpack battery system is just one step on Falcon's path to using diesel free power. With the arrival of a number of Stage V diesel generators, new start/stop technology for use in tower cranes and the Punch Flybrid system, we are committed to reducing and eventually removing diesel altogether when renting tower cranes."



The Northvolt Voltpack



HYDROGEN

One growing possible alternative to batteries is hydrogen power with many companies currently developing power units. In 2021 JCB unveiled a hydrogen powered telehandler coupled with a £100 million investment in hydrogen.

A year later Haulotte and Bouygues Energies & Services announced a partnership to develop a practical hydrogen power source for aerial work platforms with Bouygues carrying out live real world tests on several of its construction sites using a Haulotte platform equipped with a hydrogen fuel cell system. It also studied the hydrogen supply system looking to confirm the technical feasibility of using hydrogen technology in the construction sector. Less than a year later Haulotte exhibited a prototype of the hydrogen



The hydrogen range extender version of the Haulotte HS18 Pro

fuel cell system. The unit - an all-electric Pulseo HS 18 Pro Rough Terrain scissor lift - was equipped with a prototype of the removable and interchangeable Range Extender generator, operating with a Bouygues Hyvision hydrogen fuel cell system.

Last year Speedy Hire in the UK placed an order for around 100 Niftylift NR17 H2 hydrogen electric articulated boom lifts. The lifts are based on Nifty's standard all-electric, two wheel drive boom lifts with direct electric wheel motor drive and AGM maintenance free batteries - with a lithium-ion battery option. The H2 models are equipped with a compact hydrogen fuel cell, fed by a standard G20 hydrogen gas cylinder which produces electricity to top up the battery pack when necessary.

Hydrogen internal combustion engines are now being introduced by the major engine manufacturers. Deutz recently unveiled its latest sustainable drive technologies including its six cylinder 200kW TCG 7.8 H2 hydrogen combustion engine certified by the German Motor Transport Authority. The engine is already being used in hydrogen generators which Deutz is supplying to China.



The TCG 7.8 H2 is DEUTZ's first ready for the market hydrogen engine

HYDROGEN FUEL CELL TRIAL

In the UK, Sunbelt Rentals, Balfour Beatty and the Environment Agency joined forces to conduct a four week hydrogen fuel cell trial as part of the Canvey Island Southern Shoreline Revetment project - designed to renew and improve three kilometres of shoreline flood defences. The team chose eco-friendly technologies such as EcoSense welfare cabins, energy management systems, battery storage units, solar frames and rainwater harvesting systems along with fuel cell generators. The hydrogen generator - supplied by Sunbelt Rentals in partnership with EODev



A new crane filling up with HVO fuel at Liebherr's Ehingen plant

and Hydrologiq - delivered 24/7 silent power throughout the duration of the test.

Aran Bates of Hydrologiq, said: "As consensus grows that hydrogen plays a key role in removing diesel from construction sites, the key to its acceptance lies in seamless integration. We need collaboration across the entire supply chain, ensuring that the physical, digital, process and regulatory pieces all come together to unlock the true potential of this fuel source."

Over the course of the four week trial, the site consumed 202.5kg of green hydrogen, which produced 3,310 kWh of energy with an average generator efficiency of 49 percent. This resulted in a reduction of 4.3 tonnes of CO2 emissions, eliminating the direct scope 1 emissions associated with powering the compound.

LIFTING WITH HVO

Liebherr was one of the first crane manufacturers to introduce and begin using pure Hydrogenated Vegetable Oils (HVO) fuels produced with renewable energy that complied with EN 15940. In 2021 all Liebherr engines up to the 560kW were approved for operation with modern HVO fuel which is manufactured from vegetable and animal oil and fat waste from the food industry, converted into hydrocarbons by adding hydrogen, resulting in engines that are essentially CO2 neutral. HVO fuel is now used during testing and for the initial fuelling of cranes prior to delivery.

A short while later UK rental company Cadman Cranes announced it had converted half its fleet to HVO fuels and was in the process of converting the whole fleet. As well as reducing its carbon footprint by 72 percent, Cadman said that it has managed the switch without changes to its infrastructure or any capital expenditure. Other benefits included being 100 percent



The Cadman Cranes fleet runs on HVO fuels

biodegradable, being able to mix with existing diesel and offering a storage life of up to 10 years.

More recently Sarens is just one of many crane companies looking to reduce emissions and noise pollution as it develops greener fleets. After building its first 'green' SGC-90 Mega crane and the heavy luffing tower cranes the company is also investing in hybrid cranes and most recently the E-Pack for telescopic cranes. The SGC-90 motor control system not only runs on electricity, but also puts electricity back into the grid during operation.

To protect marine ecosystems Sarens is switching to biodegradable hydraulic oil on its entire marine barge fleet, while ballasting systems are being converted to use Biohydran TMP hydraulic fluid, which contains none of the harmful zinc used in commercial hydraulic oils. At its headquarters in Belgium, it now boasts more than 3,000 solar panels.

TAKING AN ACTIVE PART

Another company based in Belgium, TVH, has a truly global presence and is actively advancing a sustainable environment in all of its facilities. At its headquarters for the Americas in Olathe, Kansas City it has been promoting sustainability both internally and externally.

The company says that switching to biodegradable cups and utensils is just a small step in its waste reduction programme for everyday items. LED lights have helped reduce energy consumption, while car charging points have been installed in the parking lot in a bid to promote the use of electric vehicles.


Another sustainability initiative is the company's remanufactured parts programme, which restores used parts to an 'as new' condition, reducing waste and providing customers with sustainable options. From engines to electronics, various parts can be remanufactured offering customers alternatives to new parts, at the same time encouraging customers to send in any replaced parts on a service exchange type basis.



AMPD storage system



Haulotte's new packaging for spare parts



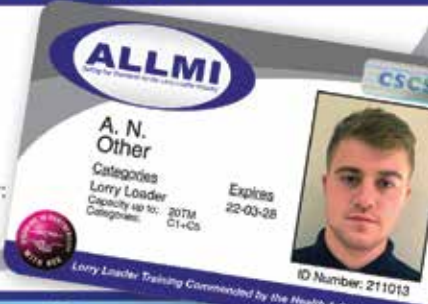

LORRY LOADER OPERATOR TRAINING
Approved by CSCS

Other courses approved by CSCS:

- Slinger / Signaller
- Crane Supervisor
- Appointed Person
- Thorough Examiner


Courses also available for:

- Instructors
- Managers


BUILD UK
Trade Association Member

The Trade Association for the Lorry Loader Industry
Tel: 0344 858 4334 • Email: enquiries@allmi.com
www.allmi.com



www.tuenkers.de

SHOCK ABSORBERS



Highly effective shock absorbers for carrier units for use with vibration drivers, sensitive loads and shock-sensitive goods.

watch the application video



Fon: 0049 (0) 2102/4517-0 • E-Mail: info@tuenkers.de



ALLMI accredited Lorry Loader Operator Training Providers

Nationwide



Contact: Sunny Patel
t: 01380 722381 m: 07483 039588
Email: sunny.patel@thwhite.co.uk
www.palfinger.co.uk
Devizes, Bradford, Falkirk and Leicester

Nationwide



LorryLoader Training Ltd
24, Mayfair Drive, Crewe, Cheshire, CW15BB
Tel: 01270 505 824 Mob: 07970061171
Web: www.lorryloader.co.uk

Nationwide



Wharfedale Road, Euro Way Ind. Est. Bradford. BD4 6SL
Tel: 08444 996688
Andy Eastwood: 01274 900900
Web: www.atlas-cranes.co.uk

Nationwide



Hiab Ltd
Cargotec Industrial Park, Ellesmere, Shropshire, SY12 9JW
Tel: 07792 831869
e-mail: wayne.ctsl@gmail.com • Web: www.hiab.com

Are your Lorry Loader Operators properly trained? Call an accredited ALLMI training provider and insist on the ALLMI card.

The training accreditation service for the lorry loader industry
ALLMI, Unit 7b, Cavalier Court, Bumpers Farm, Chippenham, Wiltshire. SN14 6LH.
tel: 0344 858 4334 email: enquiries@allmi.com web: www.allmi.com

CRANE SAFETY 2024

This year's Crane Safety conference organised by the Institute of Mechanical Engineers included a presentation by ALLMI technical manager Keith Silvester entitled 'Lorry Loader Regulation and Development'. Speaking of the event held in mid-October, Silvester said: "The aim of my presentation was to provide some fresh perspectives on the lorry loader industry, as well as explaining how we raise standards through training, developing and communicating good practice, and the evolution of product design. I also covered the subject of securing lorry loaders for travel, and what all involved can do to further ensure safety in this regard."

This year marked the eighth annual Crane Safety Conference and was supported by Vertikal and Cranes & Access. The event was very well attended and was co-located with a relatively new conference 'Sustainable and Decarbonised Construction'.



Keith Silvester

ALLMI & IPAF

An important part of ALLMI's activities involves regularly working with related industry associations and bodies. To this end and as a further development to their long standing affiliation, ALLMI and IPAF - the International Powered Access Federation - have agreed a membership exchange.

ALLMI chief executive Tom Wakefield said: "Both IPAF and ALLMI strive to raise standards and facilitate excellence in our respective sectors. As such, our objectives and values are greatly aligned and so strengthening ties in this way was a natural step to take."

IPAF's UK market general manager Richard Whiting added: "We have enjoyed a great relationship with ALLMI for many years, but this arrangement should further improve communication and collaboration in areas of mutual interest, which will undoubtedly assist both associations and the industries we represent."



MEMBERSHIP MEETINGS REVIEW

This year's ALLMI membership meetings, held at the Forest of Arden Country Club in Meriden, proved to be a huge success, with an excellent turnout that included representatives from all corners of the lorry loader industry. Speaking of the event Tom Wakefield said: "This was another fantastic membership gathering for ALLMI. Delegates were updated on a wide range of important issues and projects, including ongoing revisions to a range of key industry Standards. The meeting also received an extremely informative presentation from Jamie Davies, H M principal specialist inspector of mechanical engineering for the HSE, who delivered a presentation on the importance



Jamie Davies

of lift planning, as well as the subject of Thorough Examinations and how reports received by the HSE are processed and dealt with."

"We would like to thank all those who attended; it's always great to have face-to-face contact with so many like minded peers who want to keep up to date with the latest industry activity and stay at the forefront of safety and good practice."

For information on membership, please contact ALLMI.

MEMBERSHIP BOOM

ALLMI membership applications have seen significant growth in the third quarter of 2024, triple the number made during the same period last year. The general haulage and specialist lifting services company PPC Transport was one of the new applicants. Based in Hook, north Hampshire, operations director Dan Broda said: "We have been using the ALLMI training scheme for many years and so we are delighted to have now joined the Association's membership as well. The approval process was rigorous and included a detailed review of our lorry loader operations, checking them against legislative requirements, industry standards and good practice."

"We are extremely pleased to have met the required standard and to hold a membership status that carries significant standing within the lorry loader industry. We now look forward to benefiting from ALLMI's ongoing support and guidance, assisting us in our pursuit of continual improvement."

Tom Wakefield added: "ALLMI membership is something which is earned; the industry recognises the value in dealing with an ALLMI member and the investment in quality the company will have made to have the right to display the ALLMI logo. Along with our numerous member services, this credibility provides us with an excellent membership model and is the reason we continually experience such strong retention and growth."

ALLMI provides membership for: Manufacturers/importers, installers, service companies, ancillary equipment suppliers, fleet operators and site operators with annual subscriptions beginning at £450. For further details on membership visit www.allmi.com/membership



For details of ALLMI standards, guidance documents and training, visit: www.allmi.com

CALLING ALL CRANE OWNERS - CALLING ALL CRANE OWNERS - CALLING ALL CRANE OWNERS - CALLING ALL CRANE OWNERS

SCOTTISH CRANE APPRENTICESHIP COURSE STARTS 13TH JANUARY 2025

REGISTER YOUR APPRENTICES BY **30TH NOVEMBER 2024**

- 13 WEEKS TRAINING ON MOBILE CRANE, SLINGER SIGNALLER, MEWP, TELEHANDLER, PLANT MARSHALLER DELIVERED AT CITB NCC BIRCHAM NEWTON ALL FULLY SUBSIDISED
- ADDITIONAL GRANTS AVAILABLE FOR CITB REGISTERED EMPLOYERS



FOR MORE INFORMATION EMAIL LIFTING@SPOA.ORG.UK FOR A SWIFT RESPONSE |

WWW.SPOA.ORG.UK



GOING UP IN THE WORLD

A history of Simon Engineering, the development of the powered access industry and a lifetime as an engineer, by Denis Ashworth



Ashworth was a keen engineer and from an early age found himself in at the very start of the modern powered access industry.

His book is an unusual combination of autobiography and history of Simon Engineering Dudley, a pioneer of the powered access industry and at one time, the world's largest manufacturer of aerial lifts.

The coffee table sized book, is highly readable and includes around 150 photographs and drawings from the very beginning of the industry. It is a 'must read' for anyone who is interested in powered access, the hydraulic equipment industry or in comparing modern day engineering challenges with those of an entirely different era.

The book is available direct from the publishers at £19.50, plus £4.50 postage and packing.

- Continental Europe €23 plus €6.50 postage & packing
- Rest of world \$31 plus \$10 shipping

Ordering Information

Forename: _____ Surname: _____

Address: _____

Post Code: _____

Email: _____ Telephone: _____

Please make all cheques payable to 'The Vertical Press Ltd'

I enclose a cheque for £24 (£19.50 + £4.50 p&p)

I enclose a cheque for €29.50 (€23 + €6.50 p&p)

I enclose a cheque for \$41 (\$31 + \$10 p&p)

Please invoice me: _____

Please debit my card:

Card No: _____ Issue No: _____

Issue Date: _____ Expiry Date: _____ 3 Digit Security Code: _____

Signature: _____ Date: _____

Please send completed order form to: The Vertical Press, Box 6998 Brackley, NN15 5WY, UK. Alternatively, fax it through on +44(0)1295 768225 or scan & email info@vertical.net

GLOBAL SAFETY CAMPAIGN 2024

Earlier this year IPAF's head of safety and technical Brian Parker and Alana Paterson, the chairman of the IPAF International Safety Committee and head of health, safety & environment at contractor Taylor Woodrow, announced its 'Crushing Can Kill!' campaign. The federation's third Global Safety Campaign since Parker's appointment in 2020 aims to raise awareness of entrapment and crushing incidents involving aerial work platforms, in order to reduce the numerous fatalities and injuries which have occurred over the past decade. It stresses the importance of training, proper planning, and following safety protocols when operating aerial work platforms and using pedestrian control mode.

Over the past 10 years, reported entrapment incidents involving work platforms resulted in 118 fatalities, 16 major injuries and five minor injuries, mostly affecting operators, delivery drivers and technicians. In the last three years alone 68 percent of those fatalities involved mobile vertical lifts - scissor and mast type lifts - a significant shift from the previous data. However, IPAF says that it is encouraged by new protection solutions coming onto the market for these types of lifts.

The campaign identifies poor planning, inadequate training, complacency and equipment malfunctions as the most common causes of entrapment incidents. To reduce these risks, IPAF recommends task specific risk assessments, proper platform selection, operator training, and rehearsed rescue procedures.

IPAF has created new global guidance for all involved in work platform operations which is legislation neutral and therefore applicable worldwide, with the aim to standardise safety practices and support a new ISO standard. It has also introduced a Toolbox Talk on risks related to operating work platforms from ground controls and provided new guidance on safe pedestrian control use.

Speaking of the initiative Parker said: "Our aim is to give operators the knowledge and tools they need to navigate their work environments safely and confidently. By ensuring that this campaign resonates with those directly using the platform, we're taking an important step toward reducing and preventing entrapment and crushing related incidents."

IPAF urges industry participation and implementation of safety measures as well as the reporting of incidents to facilitate ongoing safety improvements.

VIEW IPAF'S GLOBAL SAFETY REPORT



SEGMENT BY

- ✓ Industry sector
- ✓ Country
- ✓ Location
- ✓ Machine category



THIS DATA CAN SAVE LIVES

It informs you of accident trends, enabling you to highlight hazards and risks so you can plan to avoid them through supervision, training and safe operations.

For more information visit www.ipaf.org/gsr or scan here



IPAF ELEVATION UK

IPAF Elevation UK will take place on 7th November at the Hilton Birmingham Metropole. In the afternoon, the conference will cover key trends in powered access under the theme 'Rising Together: Innovation, Education, and Sustainability' as well as the Women in Powered Access network session, themed 'Empower & Elevate' which is free to all IPAF members.

The evening will include a drinks reception and dinner, including a three course meal and a performance from comedian Scott Bennett. Tickets for the dinner are £168 including VAT and can be purchased by both IPAF members and non members. Accommodation is available at the Hilton for £180 including VAT.



MOVICARGA PEM AWARD FOR PETER DOUGLAS

At the Movicarga PEM Awards, held in Madrid last month, Peter Douglas, managing director of IPAF, received an award for his role in helping IPAF grow and adapt to the changing industry at an international level.

The Movicarga Awards are a popular and important event for the crane and access industry in Spain, bringing together a wide range of platform and crane rental companies. This year, IPAF's participation in the Eleva Alliance was highlighted, with Ainara Greño from IPAF presenting the Eleva Award.

Macarena Garcia Oliver, the magazine's owner and managing director said: "Since Peter took over IPAF, he has changed the organisation significantly, not only by expanding IPAF's global presence but also through his involvement in industry events. His experience with rental companies has been important in making IPAF more relevant every day. He takes time at every event to connect with members, listen to their concerns, and is always open to new ideas. He goes the extra mile to support both current members and those considering joining. This award is well deserved, and we are proud to present this PEM award to him from Movicarga magazine."



Macarena Garcia Oliver of Movicarga presents Peter Douglas with the PEM award

DON'T DELAY

HAVE YOU BOOKED YOUR STAND?

10th and 11th
September 2025,
Newark
Showground,
Nottinghamshire



Vertikal Days 2025 will return to Newark Showground, Nottinghamshire on 10th & 11th September.

Over 2500 lifting equipment professionals visit Vertikal Days each year to see the very latest cranes, access platforms and telehandlers, innovations and associated products.

If you want to get in front of key buyers, end users and purchasing influencers, Vertikal Days is the place to be in 2025.



Book before the end of November to take advantage of the Early Bird pricing.
Exhibitor registration is open <https://vertikaldays.net> Email the team: contact@vertikaldays.net

BOOK TODAY!

SCOTTISH CRANE OPERATOR APPRENTICESHIP

The Scottish Plant Owners Association (SPOA) is urging crane employers to enrol apprentices in its second intake for the Scottish Crane Operator Apprenticeship.

The first intake of apprentices has almost completed the first year of the two year programme, shaped by the CITB and SPOA and delivered at the National Construction College in Norfolk, England.

The course features:

- A two week induction period covering health and safety as well as personal and vocational development.
- Four weeks of mobile crane training (CPCS).
- Two weeks slinger signaller training (CPCS).
- One week of plant and vehicle marshaller training.
- One week of aerial work platform training (IPAF).
- Two weeks of telehandler training (CPCS).

The deadline is November 29th.

For more details go to: www.spoa.org.uk/safety-training/apprenticeships



BOOM LOADING COSTS £80K

Belfast based Balloo Hire Centre - part of the Briggs Equipment group - has been fined £80,000 after a large boom lift came off the side of the delivery truck while loading, inflicting life changing injuries on the operator. The fine was for 'failing to ensure the safety of its employees, and members of the public' to which the company pleaded guilty. The incident occurred on October 4th, 2022, in Belfast's Titanic Quarter, with the lift - a Genie ZX-135/70 - slipping off the side of the truck and crashing into the ground.

The investigation found that 'the company failed to adequately identify the risks associated with loading machines or provide a banksman to assist the operator. It also failed to ensure adequate measures were in place to segregate live traffic and pedestrians from the loading operation which occurred on a public road thereby placing members of the public at risk'.



SUSPENDED SENTENCE FOR BUILDER

David Beadle, owner of UK company Beadle the Builders, received a 26 week suspended sentence, 150 hours of unpaid work and ordered to pay costs of £6,043 for endangering employees' lives and ignoring an HSE prohibition notice on unsafe work at height on three occasions

Beadle, 63, allowed employees to work on scaffolds that were not properly constructed and lacked protection for those working below.



The unsafe scaffold

ATLAS PLANS AHEAD

German loader crane and excavator manufacturer Atlas has taken on eight new trainees at three of the company's locations in Germany - Ganderkesee, Delmenhorst and Vechta. They are being trained in industrial management, industrial mechanics and marketing.



SITE FATALITY COSTS BALFOUR BEATTY £306K

Igor Malka and Edmund Vispulskis had been working from a scissor lift installing cladding on a new engineering hall at the University of Birmingham in January 2020, when it was pushed over by an overhead travelling crane causing them to fall 10 metres to the ground.

Malka, 62, died while Vispulskis, sustained injuries to his spine and broken ribs, spending seven weeks in a neck brace and requiring pins to be inserted in his pelvis and thigh.

The crane was being used by another contractor to move hydraulic equipment into the building from a delivery truck. The HSE investigation found the incident could have been prevented had principal contractor Balfour Beatty implemented better controls and put in place better communication between contractors. There was also no lift supervisor present at the time of the incident

Balfour Beatty, was fined £285,000 plus costs of £21,768.88 in costs. HSE inspector Gareth Langston said: "This was a tragic incident that led to the death of a worker with another being seriously injured and still experiencing difficulties today as a result.

Lifting operations must be properly controlled - they must be planned, with plans adhered to."



WHO TRAINED THEM THEN?

Spotted 'somewhere in Texas' a man is looking to reach an outside lamp using anything available, with little attention paid to what might happen if one of the elements of his pyramid fails.



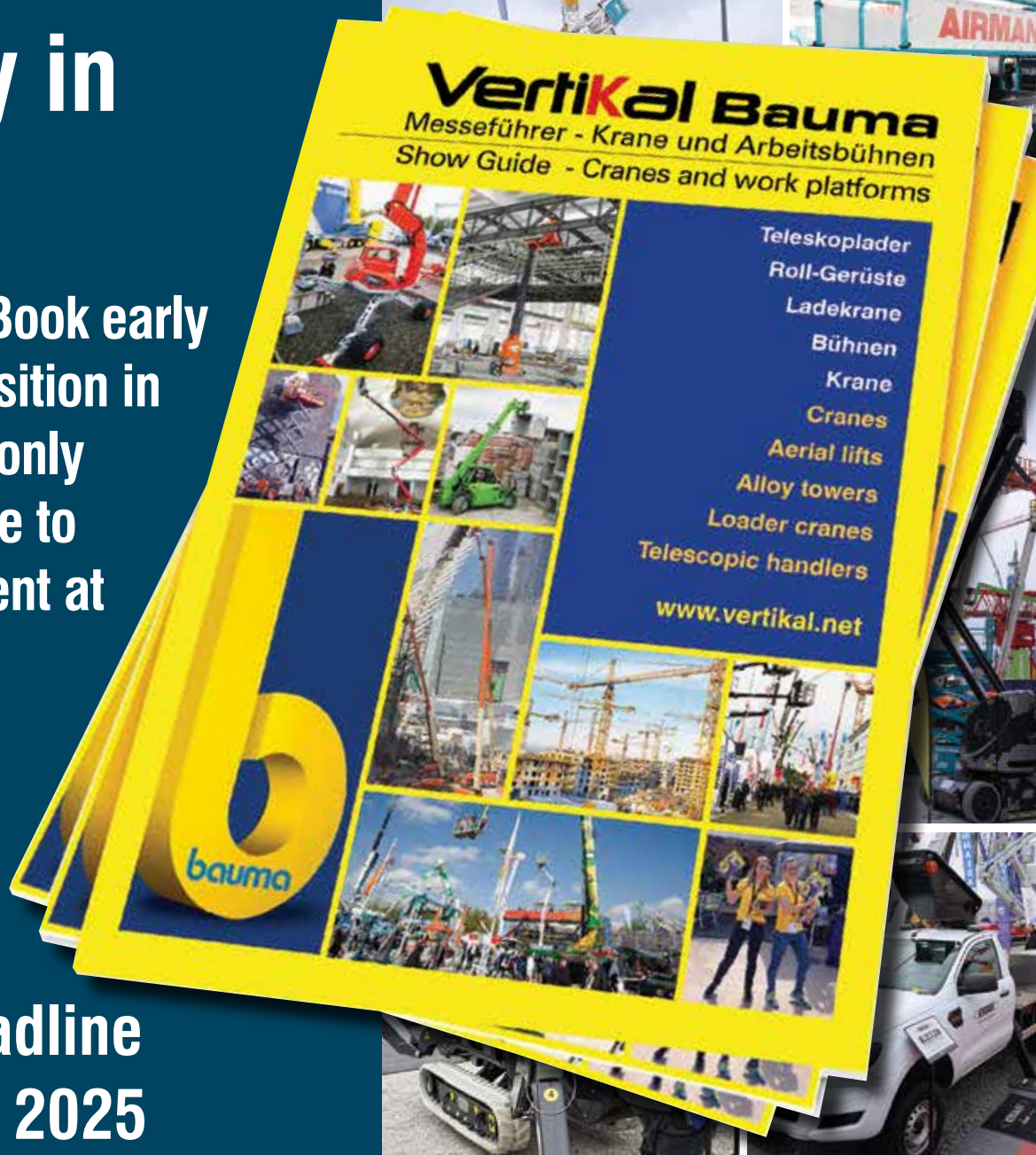
Make sure to book early...

...Bauma 2025 is firmly in sight!

Make sure to Book early for a prime position in the industry's only bi-lingual guide to lifting equipment at the big show!

Artwork deadline
14th March 2025

Call us or email us at
advertising@vertikal.net
or Werbung@vertikal.net
www.vertikal.net



April 7th - 13th 2025



OPEN MEETING AT VERTIKAL DAYS

More than 150 people attended an open meeting at Vertikal Days last month, organised by two of the CPA's special interest groups: the Crane Interest Group (CIG), chaired by Peter Gibbs, chief executive of Ainscough, and the Tower Crane Executive Group (TCIG), chaired by Dave Holder, European operations director of Wolffkran.



(L-R) Dave Holder, Steve Mulholland, Peter Gibbs & Rob Squires

It was an opportunity to discuss issues including abnormal loads and embargoes, electrical supply issues and updated Network Rail guidance regarding the use of cranes beside railways.

CPA chief executive Steve Mulholland opened the meeting and handed over to CPA consultant Craig Hook, who delivered a presentation on tower crane electrical supply issues and a subsequent update to Technical Information Note (TIN 036).

Hook demonstrated how the existing guidance required updating after a tower crane technician was injured due to an electrical fault where the wrong type of Residual Current Device (RCD) with incorrect sensitivity failed to trip. He highlighted the fact that many tower cranes and hoists now use inverters to convert AC to DC for better motor control, energy efficiency, and precision, but not all RCDs can detect faults in high frequency DC circuits.



Craig Hook

and lightning protection as per manufacturer guidelines. Hook's second presentation of the day focused on guidance on the tendering, management and operations of tower cranes, and particularly the introduction of a new document - TCIG 2404 - which is designed for use by tower crane suppliers and rental customers.

The TCIG and CIG have sister documents to support crane tendering, management, and operations. The new document clarifies offers, standardises client questions, and enables suppliers to prepare effectively and demonstrate good practice.

The third presentation focused on updated guidance to Network Rail rules with regards to the use of cranes beside railways. Hook explained that Network Rail document CIV0063 Cranes and Plant Beside Railways had been updated and became operational on 7th September, following proactive conversations between Network Rail and industry.



In his final presentation, delivered jointly with CIG chairman Peter Gibbs, Hook discussed new 'ready for work' checks for mobile and crawler cranes, which are intended to reduce incidents caused by incorrect crane rigging due to human error. The checklists, if used properly, will help minimise 'single point of failure' events, but emphasised that it remains the Appointed Person's responsibility to ensure the crane is properly rigged before use.

Chris Britton, head of operations support at Ainscough, delivered the final presentation of the meeting, focusing on travel embargoes and enforcement challenges.

He expressed the industry's frustration with the enforcement focus on the crane rental industry over the past two years and highlighted the need for a revision of the outdated STGO legislation introduced 21 years ago. He also criticised the inconsistency among the country's 42 police forces in applying the 2010 ACPO Guidance on the Movement of Abnormal Loads, leading to varying interpretations and disproportionate restrictions.



Chris Britton

Britton gave an example in which Greater Manchester Police found it was acceptable to move up to a five axle crane during the embargo hours, yet in the West Midlands there is a total ban at peak times. The poor implementations have led to higher costs, with operators having to be paid to travel before and after embargo times, often well before a site opens and well after work is halted for the day, while police insist on escorting vehicles where previously there was no requirement to do so.

Britton mentioned the formation of the Abnormal Loads Group (ALG), which has been working to engage with policymakers, including members of parliament and government departments, to effect change. The ALG is involved in revising guidance and addressing key issues. He praised Gwent Police for their role in a trial to remove crane movement embargoes and urged attendees to engage with local MPs and Chambers of Commerce about these challenges. Britton also highlighted an upcoming meeting on November 6th, regarding the approval of new NPCC guidance.

The meeting concluded with a talk by Marcus Gough, chairman of the Heavy Transport Association and director of operations of Strate Logistics. Gough referred to the collective efforts being made to try and implement guidance that is right for both industry and enforcement, promoting collaborative working and the highest road safety standards.



Marcus Gough



(L-R) David Smith of CPA with John Sutch & Paul Parry

He also emphasised the importance of using type 'B' RCDs, which are better suited for detecting faults in such systems and advised attendees on the importance of ensuring proper earth bonding



Some of the attendees

IN THE NEXT ISSUE OF

C&A

Place your products in front of 31,000 crane, telehandler and access platform buyers & users who will be reading the November issue of **Cranes & Access...**



THIS ISSUE WILL INCLUDE:

PICK & CARRY AND INDUSTRIAL CRANES

Over recent years, the mobile pick & carry/industrial crane has made something of a comeback with the arrival of several new and interesting products, mainly from Italian manufacturers. We take a look at the latest products and developments.



TRUCK MOUNTED LIFTS

While sales of the larger truck mounted lifts are showing a few signs of softening, the 3.5 tonne sector appears to be as strong as ever, with manufacturers offering hybrid and full electric machines which are gaining in popularity.

MASTCLIMBERS AND HOISTS

Although a seemingly mature market in terms of annual growth, the mix of manufacturers is changing together with new products that are more sustainable. We look at the latest developments as well as some interesting applications and issues.



OUTRIGGER MATS AND TEMPORARY TRACKWAY

There are still far too many serious incidents with cranes and aerial work platforms involving poor outrigger set up and all too frequently the lack of ground protection. We take a look at some of the latest products on the market.



Every issue of **C&A** is also packed with our **regular columns** and **news** plus **reader's letters**, **books**, **models**, **training**, along with the latest news from **CPA**, **ALLMI**, and **IPAF**.

Send any information, news, photographs or ideas on these subjects to editor@vertikal.net

Ask us about our **Special Advertising Packages** advertising@vertikal.net or call us on UK +44(0)8448 155900 or mobile +44(0)7989 970862



Parts can be used as transport loads



Derigged for an on-site move



Rigged with a counterweight tray



Impressive luffing jib configuration

MAMMOET LIEBHERR LG 1750 SX3

The Liebherr LG 1750 SX version includes wider boom sections to provide longer booms with higher capacities, making it particularly well suited to the wind power industry. This 1:50 scale model by Conrad comes in two large boxes, with a 48 page manual included. Many possible configurations are shown in outline, with detailed instructions for two of them. A standard Mammoet Collector Card and numbered metal Collector's Plate are also included.

The carrier is a very heavy model, with very little plastic used. The steering is good with each axle being independently steerable, while the tyres have a tread pattern and branding in the sidewalls. Behind the cab, the deck has textured surfaces and reasonable detailing.

The metal outrigger beams are huge with telescopic extensions. The outrigger cylinder rods are represented authentically with smooth surfaces and bear down on separate large plastic pads while a set of very large spreader plates is included.

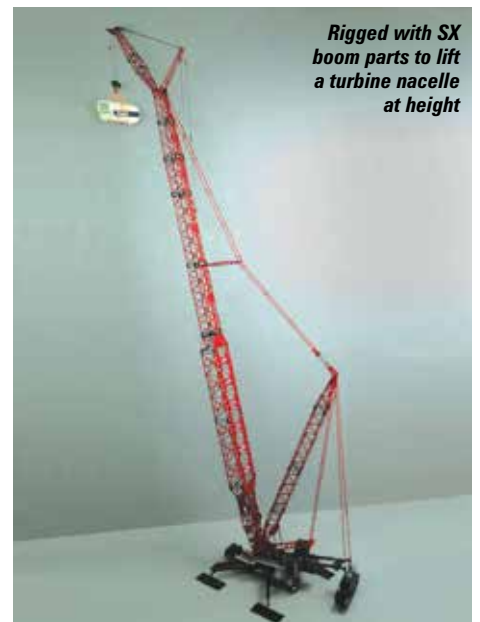
The crane superstructure is a separate part as on the real crane and it clips in when assembling the crane. It has a swing out cab which has a representation of controls and screens inside. The engine enclosure includes textured surfaces and

grilles and a metal exhaust pipe. Heavy ballast trays hang off each side at the rear or can be mounted on an extension. The hoist drums would have looked better in black rather than grey. Metal platforms with handrails fit to both sides of the superstructure.

The boom and jib sections are geometrically perfect, and they fit together extremely well and have clip-on mesh walkways. The sections are joined together by the usual Conrad plastic pins. This version of the model includes the parts to fabricate three SX boom sections. The metal parts are well made with additional plastic internal bracing and white cross beams not quite as good. The sections look very good when built up.

A particular feature of the model is that the parts are included to enable numerous configurations to be built. Two wind jib heads are included as well as a heavy lift head and the parts needed for a luffing jib. A derrick mast can also be utilised. A counterweight tray can be pinned to the back of the crane and has metal walkways and handrails. Four hook blocks are provided.

This is a hugely impressive and flexible model set and it is possible to build a model around four metres tall. It looks great in Mammoet colours and costs €1,699 from the Mammoet Store.



Rigged with SX boom parts to lift a turbine nacelle at height

CRANES ETC MODEL RATING

Packaging (max 10)	8
Detail (max 30)	24
Features (max 20)	17
Quality (max 25)	21
Price (max 15)	9
Overall (max 100)	79%

To see the full review, including a full unpacking and set up video, visit www.cranesetc.co.uk

SUBSCRIBE TO THE
C&A
NEWS PACKAGE
AND GET THE
INDUSTRY'S
MOST WIDELY
READ NEWS



Vertikal
.net



EVERY ISSUE

Delivered to your door

PLUS

DIGITAL ISSUE

Online

To get your
SUBSCRIPTION
up and running
register online at
[www.vertikal.net](http://www.vertikal.net/en/subscriptions)
/en/subscriptions

YEARLY SUBSCRIPTION

£40.00/€60.00

(UK and Ireland)

€75.00 (Rest of Europe)

\$110.00/£60.00 (Other regions)

Payable by BACS transfer/
credit card/cheque

**AN INDEPENDENT NEWS SERVICE COSTS MONEY AND
NEEDS YOUR SUPPORT SUBSCRIBE TODAY!**

READERS LETTERS

OLD CRANE MEMORIES

Hi,

In the latest issue I was interested on the page with BCHC fotos, as in 1975 I started with Caledonia Crane Hire, Dundee depot, they were a subsidiary of BCHC and had a six ton Hydrocon like the one illustrated. It was gone before I started.

The Hydrocon operator once did five local hires in one day! After 10 months six of us were made redundant, I moved to the Caledonia, Peterhead depot. They had two P&H (Pauling & Harnischfeger) 125s on contract to BOC Offshore Base. One was issued with a replacement four sheave hook block. The operator reported that the fourth sheave was not getting grease. When dismantled it was discovered the grease channel stopped at the third sheave! I see the illustrated one seemed to be rigged for tower and boom. I wonder, no way of knowing if it is one that went to Peterhead. They had two ballast blocks, one nine tons and one 18 tons. I often helped rig/derig them with the 45 tonne Pinguely I was on, not so easy to place one of the ballast blocks as it was under the superstructure.

Also at Peterhead was a 25 ton Cosmos, driving cab and operating cab identically shaped. I did a hire with it, then commented to management of my legs (and I'm short) being almost horizontal, to which I was told the cab was designed by Graham Hill, ex F1 driver! I asked "why"? He was an excellent driver but one doesn't drive a crane like a race car. I was never on anything bigger than a 60 ton Pinguely, but of the cranes I operated the best performer which was the P&H 55 ton telescopic, real Yankee built at 11ft wide on the road,

I enjoyed Vertikal Days, Newark this year,

Regards,

Brian Finnie, Carnoustie

THINGS ARE BROKEN - A BIT OF A RANT

Good afternoon Mr Darwin.

Yesterday, upon receipt of the C&A magazine, I read your article about questionable 'advancements' in vehicles and their 'free' electronic add-ons that no one uses, with great interest. On BBC 4, there was a wonderful programme about the construction of the Forth Road Bridge in Scotland, in the early 1960's.

The film provided a precis of how you can construct a massive steel/concrete structure, across a pretty scary estuary, subject to high winds and extreme cold, in just over three years..... no electronic instruments, computers and so on - good old logarithms, slide rules, ranging rods, Dumpy levels (Well - they might have moved on a bit from them!) and with a massive abundance of common sense, on site experience, trust in others, a very big skilled workforce - Elf 'n' Safety, was a minor consideration! Yet, in all the time it took to build, there were only seven fatalities, four on the bridge and three 'offsite'.

It took around four years from enabling works to QE2 driving across on a foggy morning - this is something that will never happen again. Nowadays, not taking into account all the Activists, Environmentalists, Legal Eagles, Greenies - it would never get over a rill, let alone from South Queensferry to North Queensferry, in that time! The construction progress itself would probably take at least five years, what with all the rules and regulations, thou shalt/shalt-nots, method statements, H & E requirements, tests, changes in products and small businesses going bust due to disputes and non-payments.

I live in Hampshire and, whilst 'retired' I am still pricing the rare enquiry, in particular wastewater treatment works, needless to say, the 'budgets' are so far behind current prices, in most cases it really isn't worth my time and the specialist subcontractors' money in preparing accurate BOQ's.

For example, the first reservoir to be constructed in over 30 years, on the borders of Hampshire and West Sussex, will take up to three years to basically dig a big hole, line it and bund the excavated materials around the pit to make it deeper. Not including the exceptional amount of time, it has already taken - I think seven years? - to get to this point. And the bunch of loonies, particularly the Energy Secretary, want the UK to have 'clean' energy in less than six!

In all the time I've been in construction - now over 50 years - I've never seen such a total mess. I used to work for the Danish Civil Engineering company - Hojgaard & Shultz - who built the Øresund Bridge, the longest suspension bridge in the world between Denmark and Sweden - over 15km I think - in the mid 1990's. In Scandinavia, they tend to do things so much better and quicker than us. But surely the method in which construction is carried out should improve, not get quickly bogged down by cult interests, or as in the case of the current government, slamming the brakes on much needed infrastructures such as the A303 tunnel, opening up the route west for holiday and other traffic. Or cancelling a 1,500 unit 'new village' on the site of the old Fawley oil fired power station. Or stopping the much needed upgrade of an existing railway line from Marchwood, to Fawley to serve the large suburban area, currently with a single carriageway road with a mish mash of dual carriageway sections. And the Climate Activists wonder why there are 'hot spots' of carbon dioxide/NO along the south coast. Could it be all those cars in queues along the edge of The New Forest... Best regards, Paul Keld

MANY THANKS

Hi Both,

I didn't get chance to catch you yesterday, but just wanted to say a big thank you for all your hard work on the show. Once again it ran perfectly (as far as we could see!). Everything was exactly as we had hoped and expected, and I personally felt visitor numbers were great! I can only imagine how much hard work goes into the organisation and set up, and I expect you are now looking forward to a restful weekend!

Thanks again for making it as easy as possible for 'us exhibitors'.

When you have pricing and plans for next year please let us know so we can make our reservation.

All the best

Vicki Allen

Managing Director

International Platforms

Hi Clare.

Just a quick message to say thank you for making us 'New boys' so welcome at Vertikal 2024. We have learnt a lot about where we need to be in the market, and gained a lot of good leads, hopefully customers.

Everyone on the stands were friendly, and most have been coming to Vertikal for many years, credit to you guy's. I am off to the NEC in two weeks as a visitor, I guarantee that it will not be as open and friendly as your show.

Keep up the good work, hope to see you next year.

Best Regards,

Ian Lewin



Plant & Hire
Aid Alliance

LET'S GIVE UKRAINIAN CHILDREN A **CHRISTMAS** THIS YEAR



CHILDREN'S CHRISTMAS APPEAL

The ongoing war in Ukraine continues to have a devastating impact on children, leaving many without the basic comforts of home, security, and joy. As Christmas approaches, the need to bring a little light into their lives becomes even more urgent.

In response, we are once again launching a Children's Christmas Appeal, aiming to bring smiles to these young faces. With the support of local communities, partners, suppliers, customers, families, and friends, we hope to collect enough toys and gifts to fill an artic loader, scheduled to depart from Ipswich on December 12th.

Your generosity can help make this holiday season a bit brighter for the children affected by this conflict.

GET IN TOUCH

e: ukraine@ardenthire.com
w: www.aid-alliance.com

GETTING INVOLVED

SOURCE GIFTS

Collect toys and gifts both old and new and wrap them in Christmas paper. Use a removable label to show what the gift is, whether it is for boys or girls and the age range.

SEND THEM TO OUR COLLECTION POINT

Our address is: Ardent Hire Solutions, 289 Felixstowe Rd, Ipswich, IP3 9BS. Please ensure your gifts arrive with us before **Friday 6th December**.

ARTIC LOADER DEPARTS WITH PRESENTS ON 12TH DECEMBER

A fully loaded artic loader will depart from Ipswich on 12th December to Kosice, Eastern Slovakia. From here the presents will be distributed across Ukraine with the support of Rotary International and local volunteers.



GED KELLY 1969 - 2024

Ged Kelly, the business development manager for Haulotte UK, has died. He passed away peacefully on Friday morning, September 27th, having lost his battle with cancer, he was only 55. He leaves a wife Jeanette and daughters Sophia and Lucia.

Ged Kelly was born on the Wirral and kicked off his career as a salesman for a car dealership in the early 1990s. In 1993 he threw caution to the wind and headed off on an adventure to the USA, landing a job with a business called 'At Your service Vehicles Sales' in California, where given the stories he used to tell he had a great time!

At the end of 1994 he returned home and got a job back with Ford cars, before joining the Bank of Scotland vehicle asset department in 1997, working his way up to national auction manager where he remained until 2009. Somehow - possibly due to his finance connections - he discovered the powered access industry and joined UK Platforms - then owned by Haulotte - as an area sales manager, laying the foundations to what would later become a very successful career with the Haulotte group.

He moved across to Haulotte UK in June 2012, initially as a sales manager for the Northern region, before becoming key account/national account manager in 2018, a position he relished, worked hard at and ultimately played a large part in the successes that Haulotte UK has achieved in recent years.

A message from his colleagues said: "Ged was not only a fantastic account manager, he was kind and generous with his time and knowledge and always happy to help out and support colleagues, he was at his happiest when he was in front of customers, especially at customer events, not only because he was passionate about the products he was selling but because he genuinely loved making friends and having a good time."

"Ged was a very special human being, he was the heart of our Haulotte family here in the UK, loved by everyone, and we are devastated that this cruel disease has taken him from us. We miss him terribly and will always miss him."



Ged Kelly

GUILLERMINA OLIVER 1936 - 2024

We learnt of the sad and somewhat surprising death in August of Guillermina Oliver, the mother of Publisher and owner of the leading Spanish language Crane and Access magazine Movicarga.

Founded by Luis García Sánchez in 1973, Guillermina co-owned the publication and worked with her husband on the magazine, becoming well known within the Spanish crane and access circles. She died shortly after being diagnosed with pancreatic cancer catching the family and friends by surprise - she was 88. By all accounts she was quite the force of nature until the very end.

Her daughter Macarena wrote a most beautiful tribute to her mother for the Movicarga magazine which we have translated and publish here in full. Spanish speakers please forgive our translation which will never capture all of the original.



Guillermina Oliver

TE QUEREMOS MAMÁ - WE LOVE YOU MAMÁ

Mamá started this 2024 in NY and Punta Cana. That's what defined mom, enjoying every moment she could. Just a month ago we were in Budapest and Menorca, and at Easter we went to Sicily, which was one of the destinations she had always wanted to go to.

Mamá for those of you who knew her, was an extraordinary person who always helped you. Her daily mass in Cana was never missing wherever she was in the world. We are very lucky to have enjoyed her so much and to have lived so many experiences with her.

When she found out about her illness, the first thing she told me was...we are left without Egypt. Don't worry, Mamá, we will go and take you with us wherever we go. Every Christmas meal, we sat at the table as a family and decided on a destination to go to. That's Christmas for me. And Mamá, we will keep that tradition for you.

Our annual trip to Covadonga to see Santina and Lourdes will be another tradition that we will continue.

Mamá was super devoted to San Pio de Pietrelcina, whom of course we went to see at San Giovanni Rotondo. And whom she visited on Fridays in Medinaceli, another of her sacred refuges.

Mamá taught us the value of family, forgiveness, love, friendship, Christian values, how important it is to have empathy and how important it is to enjoy. She taught us what sacrifice and true love are. She was super proud of us, and we of her. We couldn't have had a better mother and grandmother.

Some might think that she was going crazy with so much traveling, I have never met a person who said "yes" to a trip faster than her. Wonderful.

Last year in Thailand we even rode an elephant. "Since I'm here, why not ride?" Of course, Mamá.

Or in the Sequoia park in the USA when she wanted to climb a tree because she was excited about it. Or ride a Harry Potter roller coaster at Disney. She is and will be unique.

It has all happened so fast that we are still speechless. A fulminating cancer. Damn cancer. But at least she did not suffer much. I think God wanted her by his side, I don't think more than us, but He commands.

Thank you all for your prayers. They have made offerings to her in Asia and offered masses from Uganda, Lourdes to the Convent of Sotillo de la Adrada. I ask you please to order a mass for her. One or several, as many as you want.

Thank you mommy for this wonderful life at your side. Thank you for teaching that NY by plane is the same time as Cadiz by car, and that the world is as big or small as you want to make it.

A friend told me something beautiful about my mother: your mother was SOLAR. I couldn't describe her better.

We turn our dreams into memories and that is something not many people can say.

Thank you from the bottom of my heart for being our eternal light.

ALEXANDER RICHARD GLOVER
1942 - 2024

UK crane rental veteran Alex Glover has died, he passed away on Tuesday, August 27th surrounded by his family, having spent the last five weeks in hospital, following a complication with a long term pulmonary disease. Apparently, despite his illness, he maintained his 'chipper' and helpful attitude to life until the end. Here is a tribute to a man who has dedicated his life to the UK crane rental market for at least 45 years.

Glover began his working life in 1960 joining the British army with the Royal Electrical and Mechanical Engineers REME, where among other duties he spent time driving a heavy recovery truck and is likely to have started operating cranes at that time. He remained in the services for six years, during which time he served in Singapore and Borneo as well as the UK and got married. When it came to leaving the army, he found work with rental company Eddison, based in Wokingham before joining Richard Baldwin and Baldwins Crane Hire and in the four years with the company progressed to operating its largest crane.

In 1979, he decided to set up on his own and purchased a used crane he found in a scrap yard, what looks like a Coles Hydra Truck 15T. He renovated it and gave it a respray, using the only paint he had in his garage, yellow and orange, which remain the distinctive colours of the company today. He started the company from his house with his one crane.

Over the next decade two, Glover built the up the business which is based in Farnham, Surrey, roughly halfway between Winchester and central London, into an increasingly important regional player and became particularly well known for pioneering the use of large telescopic.

In 1989, he took delivery of the first 500 tonne nine axle Demag AC1600 to arrive in the country. It was not all plain sailing for the family-owned company, which went through a few restructurings, voluntary liquidation and rebirths, but always remained a family-owned business trading under the Terranova name with its distinctive livery.

He leaves behind his wife of 62 years, Jean, son Alec, daughters Pam, Jane and Helen along with 10 grandchildren and three great grandchildren. He was unquestionably a character and will be missed by many in the industry, past and present.

**MALCOLM ROBINSON 1947 - 2024**

UK heavy lift specialist Malcolm Robinson died after a long illness. He passed away on September 25th at the age of 77. He was highly regarded in the global heavy lift industry and began his career in the UK crane rental industry with Scott Greenham but moved into heavy lift with Atlas Heavy Lifting in Abu Dhabi, followed by Al Jaber and Hewden Stuart.

For the past 21 years he has worked as a project manager with global heavy lift group Mammoet, managing large projects in Australia, USA, Russia, Thailand and others. His last job was managing a major project in NW Australia. He was obliged to retire from Mammoet seven years ago due to his deteriorating health.

He leaves behind his wife of almost 40 years Lynne, along with their daughter Claire and family.

Lynne Robinson said: "I have always been extremely proud of Malcolm. I know he has given his all as he does with everything. He enjoyed his work very much. He always felt very lucky doing the job he did."

"We have had a great life together. Married 24th December 1984. The best time of my life and I know Malcolm felt the same. Sadly, his Aphasia took away much that he loved doing and I had to become his voice. The end, which came suddenly, was a shock to us all. We will miss him more than any words can convey."

"He would certainly be thrilled to know he was so highly thought of. I did the best I could to give him the best time possible. Thankfully he knew me, possibly my voice more, but I will be forever very grateful for that."



2024**IPAF Elevation UK 2024**

November 7, 2024
Hilton Birmingham Metropole, UK
Tel: +44 (0)15395 66703
www.ipaf.org
courtney.kellett@ipaf.org

CPA Conference 2024

November 7, 2024 'Shaping the Future: Insights for the Plant-hire Sector'
Fillongley, Coventry, UK
Tel: +442077963366
www.cpa.uk.net/events
E-Mail: enquiries@cpa.uk.net

Bauma China 2024

November 26 - 29, 2024
bauma in Shanghai Shanghai, China
Tel: +49(0)89 9 4920251
Fax: +49 (0)89 9 4920259
www.bauma-china.com/

CPA Crane Interest Group meeting

November 28, 2024
Fillongley, Coventry
Tel: +44 (0)2077963366
www.cpa.uk.net/events

Bauma Conexpo India

December 11 - 14, 2024
Preliminary dates for the bauma/Conexpo exhibition in India Noida, Delhi, India
Tel: +49 89 949-20255
www.bcindia.com/en/

2025**Baumag**

January 26 - 29, 2025 Swiss construction equipment show Lucerne, Switzerland
Tel: +41 56 204 20 20
www.baumaschinen-messe.ch/htm/home.htm

The ARA Show 2025

January 30 - February 1, 2025
The American Rental Association's annual trade show and convention Las Vegas USA
Tel: +1 800 334 2177
http://www.arashow.org/

Executive Hire Show

February 12-13, 2025 Coventry
Tel: +44 (0)207 973 4630
www.executivehireshow.co.uk/

The IPAF Summit and awards

March 13
Annual Summit and IAPAs awards
Dublin, Ireland
Tel: +44(0)15395 66700
www.ipaf.org

Buildtech Asia 25

March 26 - 28, 2025
Asian exhibition for the building and construction market Singapore
Tel: +65 6319 4020
www.buildtechasia.com.sg

Hanover Messe

March 31 - April 4, 2025
World's largest industrial exhibition Hanover, Germany
Tel: +49 511 89-1
www.hannovermesse.de

April 7 - 14, 2025
World's largest construction equipment show Munich, Germany
Tel: +49 (0)89 51070
www.bauma.de

SC&RA Annual Conference

April 21 - 25, 2025
Annual Conference of the US cranes and heavy transport association including the Jobs of the Year awards, Arizona Biltmore Hotel, Phoenix, Arizona, USA
Tel: +1(703) 698-0291
https://www.scranet.org/SCRA/Content/events/Annual-Conference.aspx

ERA Convention 2025

June 4 - 5, 2025 Location to be confirmed
Tel: +32 2 761 16 04
www.erarental.org
era@erarental.org

Hire25

June 4 - 5, 2025
The Hire and Rental association of Australia and Elevating Work Platform Association annual convention & expo Melbourne, Australia
Tel: +61 (0) 299982255
www.hriaconvention.com.au
hire25@hria.com.au

Hire Con 2025

September 1 - 2, 2025
HIANZ- Hire Association of New Zealand conference & expo Christchurch, New Zealand
Tel: +64 7 575 2563
www.hianz.net.nz/
events@hianz.net.nz

Vertikal Days 2025

September 10 - 11, 2025
Newark showground, Nottingham, UK UK/Ireland Crane, access and telehandler event.
Tel: +44 (0) 8448 155900
www.vertikaldays.net

Innovationstage der Höhenzugangstechnik

September 12 - 13, 2025
Innovation Days, informal event for innovative access equipment, mini cranes and telehandlers Hohenroda, Hessen Hotel Park, Germany
www.borntolift.de/innovationstag

JDL Expo

September 17 - 19, 2025 France's crane and access event Beane
Tel: +33 (0)1 45 63 68 22
www.jdlexpo.com/
info@jdlexpo.com

HCEA Convention and Old Equipment Exposition

September 18 - 20, 2025
The Historical Construction Equipment Association's annual convention and expo Bowling Green, Ohio, USA
Tel: +1 419-352-5616
www.hcea.net/
info@hcea.net

Platform Gunleri 25

September 18 - 20, 2025
Annual exhibition of Platformder - the Turkish aerial work platform association
Istanbul, Turkey
Tel: +90 216 466 87 22
www.platformgunleri.org/
platformder@platformder.org.tr

Internationale Schwerlasttage

September 19 - 20, 2025
German conference on heavy lifting, transport, rigging, and installation Hohenrhoda, Germany
Tel: +49 (0) 6181 9060 705
www.schwerlasttage.de
info@schwerlasttage.de

The Utility Expo

October 7 - 9, 2025
US utility industry's largest equipment show Louisville, Kentucky, USA
Tel: +1 414-274-0644
www.theutilityexpo.com
TheUtilityExpo@Xpressreg.net

Crane Safety 2025

October 14, 2025
Crane safety conference organised by the Institution of Mechanical Engineers. London, UK
Tel: +44 (0)207 973 1251
www.eventportal.imeche.org
eventenquiries@imeche.org

CICA National Conference 2025

Brisbane October 16 - 18, 2025
The annual conference of the Crane Industry Council of Australia Brisbane, Australia
Tel: +61 03 8320 0411
www.conference.cica.com.au/
wise@wiseconnections.com.au

Liftex 2025

November 18 - 19, 2025 Liverpool
Annual conference and exhibition of LEEA Liverpool, UK
Tel: +44 (0) 203 488 2865
www.leeaint.com
enquiries@L2Events.com

Crane Rental Association of Canada Annual Conference

Date to be advised. The annual Canadian crane conference Windsor, Ontario, Canada
Tel: +1 780.790.2722
www.crac-aclg.ca/
info@crac-canada.com

GIS 2025

Date to be confirmed, 2025
Italian crane, access and heavy transport exhibition Piacenza, Italy
Tel: +39 010/5704948
www.gisexpo.it

2026**Swissbau**

January 20 - 23, 2026
Swiss construction exhibition Basel, Switzerland
Tel: +41 58 200 20 20
www.swissbau.ch

The ARA Show 2026

February - Dates to be confirmed
The American Rental Association's annual conference and exhibition Orlando, Florida, USA
Tel: +1 800 334 2177
www.arashow.org

Conexpo-Con/Agg 2026

March 3 - 7, 2026 The leading US construction show Las Vegas, Nevada, USA
Tel: +1 414-298-4133
www.conexpoconagg.com

Samoter

May 6 - 9, 2026
International earthmoving and building equipment show Verona, Italy
Tel: +39 045 8298111
www.samoter.it/it

SC&RA Annual Conference

April 20 - 24, 2026 Annual Conference of the US cranes and heavy transport association including the Jobs of the Year awards Omni Amelia Island, Amelia Island, Florida, USA
Tel: +1 (703) 698-0291
https://www.scranet.org/SCRA/Events/

Apex 2026

June 2026 International powered access trade show Maastricht, The Netherlands
Tel: +31 (0)547 271 566
www.apexshow.com

IAA Transportation

September 15 - 20, 2026
The logistics, commercial vehicles, and the transport show Hanover, Germany
Tel: +49 30 897842-202
www.iaa-transportation.com/en
stephanie.glaesser@vda.de

Platformer Days 2026

October 8 - 9, 2026
German Access and lifting exhibition Karlsruhe, Germany
Tel: +49 721 3720 5096
www.platformers-days.de/
philipp.doll@messe-karlsruhe.de

Glasstec 2026

October 20 - 23, 2026
The largest event for glass lifting and installation Düsseldorf, Germany
Tel: +49 211 456001
www.glasstec-online.com/
online-support@glasstec-online.com

Smopyc

November - Dates to be confirmed
Spanish construction equipment exhibition Zaragoza, Spain
Tel: +34 976 764 700
www.feriazaragoza.com/smopyc

2027**Mawev 2027**

April, 2027 Austrian construction exhibition St. Pölten, Austria
Tel: +43 316 8088 216
www.mcg.at/events/mawevshow

Visit: www.Vertikal.net/en/events for a full listing of events with direct links to the organisers.

DON'T DELAY



Vertikal Days 2025 will return to Newark Showground, Nottinghamshire on 10th & 11th September.

Over 2500 lifting equipment professionals visit Vertikal Days each year to see the very latest cranes, access platforms and telehandlers, innovations and associated products. If you want to get in front of key buyers, end users and purchasing influencers, Vertikal Days is the place to be in 2025.

Exhibitor registration is open
<https://vertikaldays.net>
Email the team: contact@vertikaldays.net

BOOK TODAY!



MARKETPLACE

RECRUITMENT . USED EQUIPMENT . REPLACEMENT PARTS
Place your products or services in front of more than 28,700 individuals who buy, specify or use cranes, lifting gear, aerial work platforms, work at height equipment or telehandlers across 195 countries. Given the global readership you may be surprised at how little a regular advert costs and how effective it can be.

www.vertikal.net/en/cranes-and-access/advertise
advertising@vertikal.net or info@vertikal.net

Contact us at:

cranes & access

KRAN & BÜHNE

The Vertikal Press Ltd.

PO Box 6998, Brackley,
NN13 5WY UK.
Tel: +44 (0)8448 155900
E: advertising@vertikal.net

Vertikal Verlag

Sundguallee 15, Freiburg
Germany, D-79114
Tel: +49 (0)761 8978660
E: info@vertikal.net

DIGITAL & PRINT



Crane Sales Director

— Your Tasks —

- Solicit and promote the sales for Crane Products in UK & Ireland
- Develop Crane business, supporting dealers and key accounts
- Lead the team Product Development to improve products

— Your Profile —

- You have extensive relevant experience and wide contacts in UK & Ireland
- You have Crane technical background, in particular Mobile Crane products
- You are able to develop sales network from scratch
- You are comfortable working under pressure and targets
- Manufacturer working experience is preferred

— We Offer —

- Competitive Salary and Incentives
- Work in a dynamic, collaborative and international environment
- A culture with flat hierarchies, simple communication and plenty of room for your ideas
- A chance to work directly with a manufacturer, and grow together with its new subsidiary from scratch

Contact

Email address: info@xcmguk.com / k.he@xcmguk.com
 Website: <https://xcmguk.com/>

Access Platform Service Engineer

Your tasks

- Providing service, repair and maintenance for MEWPS products
- Providing PDI services & possible adjustment efficiently and up to standard

Your profile

- You have successfully completed your training as a mechanic in the field of MEWPS Machinery or have an equally qualified profile
- You are able to operate MEWPS Machinery with UK qualifications
- You have profound PDI knowledge and skills on MEWPS machinery
- You have decent painting skills on machinery
- You have fleet management mindset, familiar with allocation of machines by serial numbers, and record it in order
- You have a good knowledge of safety precautions and procedures for handling mechanical equipment

We offer

- Competitive Salary and Incentives
- Work in a dynamic, collaborative and international environment
- A culture with flat hierarchies, simple communication and plenty of room for your ideas
- A chance to work directly with a manufacturer, and grow together with its new subsidiary from scratch

Contact

Email address: info@xcmguk.com
k.he@xcmguk.com

Website: <https://xcmguk.com/>



FIND THAT PERSON



LOOKING FOR CRANE, ACCESS OR TELEHANDLER PEOPLE? LOOKING FOR A JOB?

Then why not start right here in the Cranes&Access recruitment section? With your support we can build a highly useful recruitment resource for the industry right within the UK and Ireland's only dedicated publication.

Call or email us today to find out about our great start up rates. Jobs Wanted ads are FREE!

+44 (0) 8448 155900

If responding to one of the ads please say you saw it in Cranes&Access.



Integrated Lifting Solutions

JRL

LONDON TOWER CRANES

+(44) 0208 327 4060

sales@londontowercranes.co.uk

- The UK's leading tower crane provider
- National coverage with a local presence
- Over 200 Cranes in fleet
- Average age of crane fleet under 5 years old
- Full inclusive service ranging from initial design, erection, service, maintenance and dismantle



C&A Access & Lifting directory

The fast and efficient way to find a supplier

Reach over 28,000 readers for only £185/€210 per year with live link direct to your website. Check out the new enhanced entry option!

Book now – advertising@vertikal.net

ACCESS EQUIPMENT MANUFACTURERS

AIRO	www.airo.com
Alimak	www.alimak.com
Almac	www.almac-italia.com
ATN	www.atnplatforms.com
Böcker	www.boecker.de
Bravi	www.braviisol.com
Bronto Skylift	www.brontoskylift.com
CLM Construction Supplies	www.clm-supplies.com
CMC	www.cmclift.com
CPL	www.cpl-ltd.com
CTE	www.ctelift.com
Denka-Lift	www.rothlehner.com
Dino Lift	www.dinolift.com
Dingli	www.cndingli.com
Easylift	www.easy-lift.it
Falcon Lifts	www.falconlifts.com
GEDA	www.geda.de
Genie	www.genielift.com
GSR	www.gsrspa.it
Haulotte	www.haulotte.com
Hinowa	www.hinowa.com
Holland Lift	www.hollandlift.com
Imer Access	www.imergroup.com
Iteco	www.imergroup.com
JCB	www.jcb.com
JLG	www.jlg.com
Klaas	www.klaas.com
Klubb	www.klubb.com
Leguan Lifts	www.leguanlifts.com
Manitou Group	www.manitou.com
Mecaplus	www.mecaplus.es
Omme Lift	www.ommelift.com
Palazzani Industrie	www.palazzani.it
Palfinger Platforms	www.palfinger-platforms.com
Platform Basket	www.platformbasket.com
Ruthmann	www.ruthmann.de

Sinoboom	www.sinoboom.com
Saeclimber	www.saeclimber.com
Skyjack	www.skyjack.com
Snorkel	www.snorkellifts.com
Socage	www.socage.it
Teupen	www.teupen.com
Versalift UK	www.versalift.co.uk
XCMG European Sales and Services	www.xcmgess.de
Zoomlion	http://en.zoomlion.com

PLATFORM RENTAL

AA Access (Specialists)	www.aaaccess.co.uk
Acrolift	www.acrolift.co.uk
Ahern Rentals - USA	www.ahern.com
AFI-Uplift	www.afi-uplift.co.uk
Dragon Access	www.dragon-access.co.uk
Drammen Liftutleie AS	www.drammenlift.no
Hird	www.hird.co.uk
JMS Powered Access	https://jms.co.uk
Kran Cranes	www.kran.ro/inchiriere-macara-constantina
Rental Romania	
Monitor Lifts - AUS	www.monitor.net.au
Mr Plant Hire	www.mrplanthire.co.uk
Platform Sales & Hire	www.platformsales.co.uk
Power Platform Services	www.pps.co.uk
Rapid Platforms	www.rapidplatforms.co.uk
Viking Access	www.vikingaccess.co.uk
Warren Access	www.warrenaccess.co.uk

NEW & USED PLATFORMS

Access Platform Sales (APS)	www.accessplatforms.co.uk
AFI Resale	www.afi-resale.co.uk
A.J. Access Platforms	www.accessplatforms.com
Gantic, Norway	www.gantic.no
Genie	www.genielift.com
GSR Aerial Platforms UK	http://en.gsrspa.it
Haulotte	www.haulotte.com
Hird	www.hird.co.uk
Independent Access Sales	www.iasales.co.uk

International Platforms	www.internationalplatforms.co.uk
INTEQ UK and UAE	www.inteq.uk
JLG	www.jlg.com
JMS Powered Access	https://jms.co.uk
Kunze GmbH	www.kunze-buehnen.com
Mr Plant Hire	www.mrplanthire.co.uk
Rothlehner	www.rothlehner.com
Platform Sales	www.platformsales.co.uk
Promax Access	www.promaxaccess.com
Rapid Platforms	www.rapidplatforms.co.uk
TVH - Group	www.tvh.com
Vertimac	www.vertimac.com

CRANE MANUFACTURERS

Böcker	www.boecker.de
Ernest Doe & Sons Ltd.	www.ernestdoelockercranes.com
Grove	www.groveworldwide.com
Jaso Tower Cranes	https://jaso.com
Jekko Minicrane	www.jekko.it
JMG	www.jmgcranes.com
KATO	www.rivertekservices.com
Klaas	www.klaas.com
Kobelco	www.kobelcocm-global.com
Liebherr	www.Liebherr.com
Linden Comansa	www.comansa.com
Maeda	www.maedaminicranes.co.uk
Manitowoc	www.manitowoccranes.com
Potain	www.manitowoccranes.com
Raimondi	www.raimondi.co
Spierings	www.spieringskranen.nl
Tadano	www.tadano.com
Tadano Faun	www.tadano.com
Tadano Demag	www.demagmobilecranes.com
Unic Cranes	www.unic-cranes.co.uk
Valla	www.valla-cranes.co.uk
Wolffkran	www.wolffkran.de
XCMG European Sales and Services	www.xcmgess.de
Zoomlion	www.zoomlioncranes.co.uk

LORRY/TRUCK LOADER CRANES

Atlas Cranes UK	www.atlasgmbh.com
DN Cranes	www.dncrane.com/en
Ernest Doe	www.ernestdoelockercranes.com
Palfinger	www.palfinger.com
Palfinger UK	www.palfinger.co.uk

NEW & USED CRANES

Cotac Oy	www.crane.fi
Crowland Cranes	www.crowlandcranes.co.uk
Delden Cranes	www.deldencranes.co.uk
Ernest Doe & Sons Ltd.	www.ernestdoelockercranes.com
Gantic, Norway	www.gantic.no
HighSparks	www.highsparks.co.uk
Hird	www.hird.co.uk
Kobelco	www.kobelco-cranes.com
Rivertek Services	www.rivertekservices.com
Terex Demag	www.terex-cranes.com
Valla	https://valla-cranes.co.uk

CRANE HIRE

Cadman Cranes	www.cadmancranes.com
Cork Crane Hire (Liverpool)	www.corkcranehire.com
Delden Cranes	www.deldencranes.co.uk
HighSparks	www.highsparks.co.uk
Hovago	www.hovago.com
John Sutch Cranes	www.johnsutchcranes.co.uk
Kran Cranes	www.kran.ro/inchiriere-macara-constantina
Rental Romania	
Ladybird Tower Crane Hire	www.ladybirdcranehire.co.uk
McNally Crane Hire	www.cranehire-ireland.com

Sangwin	www.sangwin.co.uk
Schaften Leasing B.V.	www.schaftenleasing.nl

MINI CRANE HIRE

GGR	www.unic-cranes.co.uk
JT Mini Crane Hire	www.jtminicranes.co.uk
Lift Limited	www.liftminicranehire.co.uk
Hird	www.hird.co.uk

SELF ERECTING TOWER CRANES

Cork Crane Hire	www.corkcranehire.com
John Sutch Cranes	www.johnsutchcranes.co.uk
Ladybird Tower Crane Hire	www.ladybirdcranehire.co.uk

TOWER CRANES

HighSparks	www.highsparks.co.uk
------------	--

FURNITURE HOISTS

Böcker	www.boecker.de
--------	--

TELEHANDLER MANUFACTURERS

Dieci Telehandlers Ltd	www.dieci-telehandlers.co.uk
Faresin	www.faresindustries.com
Genie	www.genielift.com
Haulotte	www.haulotte.com
JLG	www.jlg.com
Magni	www.magnith.com
Manitou Group	www.manitou.com
Skyjack	www.skyjack.com
Snorkel	www.snorkellifts.com
Merlo	www.merlo.co.uk

NEW & USED TELEHANDLERS

Dieci Telehandlers	www.dieci.com
Gantic, Norway	www.gantic.no
GT Lifting Solutions	www.gtlift.co.uk
TVH Group	www.tvh.com
Vertimac	www.vertimac.com

TELEHANDLER RENTAL

GT Lifting Solutions	www.gtliftingltd.co.uk
JMS Powered Access	https://jms.co.uk
Mr Plant Hire	www.mrplanthire.co.uk

SCAFFOLD TOWERS

CLM Construction Supplies	www.clm-supplies.com
---------------------------	--

MASTCLIMBERS & HOISTS

Alimak	www.alimak.com
CLM Construction Supplies	www.clm-supplies.com
GEDA	www.geda.de
Klaas	www.klaas.com
Saeclimber	www.saeclimber.com

SPECIAL/BESPOKE ACCESS & LIFTING SOLUTIONS

Access Platform Sales (APS)	www.accessplatforms.co.uk
GT Lifting Solutions	www.gtliftingltd.co.uk
JMS Powered Access	https://jms.co.uk
Platform Sales & Hire	www.platformsales.co.uk
Warren Access	www.warrenaccess.co.uk/hire
Working At Height Ltd	www.workingatheightltd.com

SPECIAL & NICHE ACCESS

Acrolift	www.acrolift.co.uk
DENKA Narrow	www.rothlehner.com
JMS Powered Access	https://jms.co.uk
Rapid Platforms	www.rapidplatforms.co.uk
Smart Platform Rentals	www.smartplatforms.co.uk

SPECIAL LIFT & TRANSPORT EQUIPMENT

Collett A Sons, UK	www.collett.co.uk
--------------------	--

HEAVY TRANSPORT/ABNORMAL LOADS

Collett A Sons, UK	www.collett.co.uk
--------------------	--

SELF-PROPELLED MODULAR TRANSPORTERS

Collett & Sons, UK	www.collett.co.uk
--------------------	--

SITE SAFETY AUDITS

Alfa Access Services	www.alfa-access-services.com
----------------------	--

INDUSTRY ASSOCIATIONS

ALLMI	www.allmi.com
CICA	www.cica.com.au/
CISRS	www.cisrs.org.uk
CPA	www.cpa.uk.net
EWPA	www.ewpa.com.au
IPAF	www.ipaf.org
NASC	www.nasc.org.uk
OSHA	www.osha.gov
PASMA	www.pasma.co.uk

HEAVY LIFT MANAGEMENT

DWLS	www.dwls.co.uk
------	--

Ellevo Group	www.ellevogroup.com
--------------	--

HEAVY LIFT PLANNING & RISK ANALYSIS

DWLS	www.dwls.com
------	--

Ellevo Group	www.ellevogroup.com
--------------	--

AUCTION HOUSES

Ritchie Brothers	www.rbauktion.com
------------------	--

BATTERY SUPPLIERS & MANUFACTURERS

Battery Service Hub	www.batteryservicehub.com
DC Battery Technologies	www.dcbattery.tech
C&D Technologies	https://www.cdtrojan.com
Leoch Battery UK	www.leochbattery.co.uk
Platinum International Ltd	Platinuminternational.co.uk

LOAD CELLS & LOAD MONITORING SYSTEMS

PCE Instruments UK Ltd	www.pce-instruments.com
------------------------	--

CONTROL SYSTEMS

MOBA Automation	www.moba.de
-----------------	--

GENERATOR SALES & RENTAL

JMS Powered Access	https://jms.co.uk
--------------------	---

ONLINE TECHNICAL HELP

Crane Tools	www.cranetools.com
-------------	--

OUTRIGGER PADS, MATS & ROADWAYS

Brilliant Ideas / Alimats	https://brilliantideasltd.co.uk/alimats/
---------------------------	---

DAWSON-WAM Steel Mat Hire	www.SteelMatHire.co.uk
---------------------------	--

Mat & Timber Services	www.sarumhardwood.co.uk
-----------------------	--

Nolim	www.nolim.co.uk
-------	--

Outriggerpads	www.outriggerpads.co.uk
---------------	--

Timbermat	www.timbermat.co.uk
-----------	--

TMC lifting supplies	www.tmc-lifting.com
----------------------	--

Universal Crane Mats	www.universal-crane-mats.com
----------------------	--

Welex Group	www.welexgroup.com
-------------	--

COMPONENT SUPPLIERS

PCE Instruments UK Ltd	www.pce-instruments.com
------------------------	--

Tele Radio Group	www.tele-radio.com
------------------	--

WIRE ROPE & CABLE

Rope and Sling	www.ropeandsling.co.uk
----------------	--

LIFTING GEAR MANUFACTURERS

Britlift	www.britlift.com
----------	--

PARTS & SERVICE SUPPLIERS

Alfa Access Services	www.alfa-access-services.com
----------------------	--

Crowland Cranes	www.crowlandcranes.co.uk
-----------------	--

Ernest Doe & Sons Ltd.	www.ernestdoeladecranes.com
------------------------	--

Gantic, Norway	www.gantic.no
----------------	--

Haulotte	www.haulotte.com
----------	--

IPS	www.ipspartsonline.com
-----	--

JLG	www.jlg.com
-----	--

Lift-Manager	www.lift-manager.com
--------------	--

OTR Wheel Engineering Europe	www.otrwheel.co.uk
------------------------------	--

PCE Instruments UK Ltd	www.pce-instruments.com
------------------------	--

TVH - Group Thermote & Vanhalst	www.tvh.be
---------------------------------	--

Vertimac	www.vertimac.com
----------	--

RECRUITMENT

Vertikal.Net	www.vertikal.net/en/recruitment
--------------	--

SAFETY EQUIPMENT

Load Systems UK Ltd	www.loadsystems.co.uk
---------------------	--

RENTAL MANAGEMENT SOFTWARE

Higher Concept	www.higherconcept.co.uk
----------------	--

HireHop Equipment Rental Software	www.hirehop.co.uk
-----------------------------------	--

HireHop Equipment Rental Software	www.hirehop.com
-----------------------------------	--

Infosystem	www.levaplus.ch
------------	--

inspHire	www.insphire.com
----------	--

Matusch GmbH	www.matusch.de
--------------	--

MCS Rental Software	www.mcsrentalsoftware.com
---------------------	--

vWork	www.vworkkapp.com
-------	--

STRUCTURAL REPAIRS

Crowland Cranes	www.crowlandcranes.co.uk
-----------------	--

John Taylor Crane Services	www.jtcranes.co.uk
----------------------------	--

TRAFFIC MANAGEMENT

Atlas Traffic Management	www.atlastm.co.uk
--------------------------	--

TECHNICAL & SAFETY CONSULTANCY

Access Safety Management	www.accesssafety.co.uk
--------------------------	--

TRAINING ASSOCIATIONS & NETWORKS

ALLMI	www.allmi.com
-------	--

AWPT	www.awpt.org
------	--

IPAF	www.ipaf.org
------	--

NASC	www.nasc.org.uk
------	--

Pasma	www.pasma.co.uk
-------	--

TRAINING CENTRES & TRAINERS

Access Platform Sales (APS)	www.accessplatforms.co.uk
-----------------------------	--

Astra Access	www.astratraining.co.uk
--------------	--

Ainscough	www.ainscoughtraining.co.uk
-----------	--

AJ Access	www.accessplatforms.com
-----------	--

Boss Training	www.bosstraining.co.uk
---------------	--

Certora Training	certoratraining.co.uk
------------------	--

Davis Access	www.davisaccess.co.uk
--------------	--

Haulotte	www.haulotte.com
----------	--

IAPS	www.iapsgroup.com
------	--

Lift-Manager	www.lift-manager.com
--------------	--

Smart Platform Rentals	www.smartplatforms.com
------------------------	--

TVH Group	www.tvh.com
-----------	--

UTN	www.utntraining.co.uk
-----	--

Versalift Training Direct	www.versalift.co.uk/training
---------------------------	--

Warren	www.warrenaccesstraining.co.uk/courses/Access Training
--------	--

SAFETY TRAINING

Atlas Cranes UK	www.atlasgmbh.com
-----------------	--

TRAINING SERVICES

JLG Training	www.jlg.com
--------------	--

Liebherr Training (UK)	www.liebherr.co.uk
------------------------	--

Lifting Equipment Training	www.letltd.co.uk
----------------------------	--

Mr Plant Hire	www.mrplanthire.co.uk
---------------	--

Rapid Platforms	www.rapidplatforms.co.uk
-----------------	--

TH White	www.thwhite.co.uk
----------	--

Terex Atlas (UK) Ltd.	www.atlascranes.co.uk
-----------------------	--

TVH Group	www.tvh.com
-----------	--

ARE YOU LISTED...
...in C&A's NEW
Access & Lifting
directory?

www.vertikal.net

KRAN & BÜHNE

Das Magazin für Kran- & Arbeitsbühnen-Anwender




Ihr Vorteil!

Ja, ich abonniere *Kran & Bühne* für ein Jahr (8 Ausgaben) für 26,- Euro (inkl. 7% MwSt.) frei Haus (bzw. 39,- Euro für Abonnenten außerhalb Deutschlands).

» Name/Vorname:

» Firma:
Umsatzsteuernummer (nur bei Firmen)

» Straße/Postfach:

» Postleitzahl/Ort:

» Land:

» Tel.:

» Fax:

» E-Mail-Adresse:

» 1. Unterschrift des Abonnenten:

Um leistungs- und wettbewerbsfähig zu bleiben, benötigt die Industrie hochqualifizierte und ihre Märkte betreffende Informationen. Diesem Verlangen kommt *Kran & Bühne* mit praxisorientierten Artikeln nach. Mit unseren Publikationen helfen wir den Lesern, gerade bei härteren Marktbedingungen, fundierte Entscheidungen zu treffen. Die Artikel werden von einem erfahrenen, international und in Deutschland tätigen Journalistenteam verfasst. *Kran & Bühne* liefert dem Leser Neuigkeiten und Baustellenberichte. Ein wichtiger Bestandteil sind dabei harte Fakten darüber, welche Ausrüstung für welche Einsätze geeignet ist.

Abonnieren Sie jetzt einfach & bequem!

Per Fax: (0761) 88 66 814
oder per Post: Kran & Bühne | Sundgauallee 15 | D-79114 Freiburg
Tel. (0761) 89 78 66-0 | Fax (0761) 88 66 814 | E-Mail: info@vertikal.net | www.Vertikal.net

» Ich wünsche folgende Zahlungsweise:

Bargeldlos per Bankeinzug gegen Rechnung
(nur in Deutschland)

» IBAN:

» BIC:

» Geldinstitut:

» Firma:

» Postleitzahl/Ort:

Hiermit bestätige ich, dass die Abbuchung des jährlichen Abo-Betrages von 26,- Euro für o.g. Firma/Anschrift vorgenommen werden kann.

» 2. Unterschrift des Abonnenten:

Widerrufgarantie: Das Abonnement kann jederzeit und ohne Angabe eines Grundes widerrufen werden. Die Kosten für nicht zugestellte Ausgaben werden zurückerstattet.



FIXED PRICE SERVICE PLANS

GREAT VALUE, NO HIDDEN EXTRAS

Routine servicing and maintenance helps keep your access platform reliable, legally compliant and working safely at height.

Our Fixed Price Service Plans are fully inclusive of all labour, consumables and travel costs and typically includes two 6 monthly LOLER Thorough Examination Reports.

Contact the Service Team today – all makes and models of access platform across the UK covered.



- FIXED PRICE SERVICE PLANS
- LOLER TESTING
- BOOK A SERVICE
- WORKSHOP REFURBISHMENT
- FAST RESPONSE BREAKDOWN COVER
- PARTS

Call us on 01480 891 251 or email service@accessplatforms.co.uk

Access Platform Sales Ltd - Leewood Business Park, Upton, Huntingdon, Cambridgeshire. PE28 5YQ



PURE PERFORMANCE

Airfilters

With cutting-edge materials, our durable air filters withstand the wear and tear of regular use in the toughest conditions, resulting in extended service intervals.



Hydraulic filters

For improved performance, our hydraulic filters are equipped with superior filtration features, high dirt-holding capacities and durable reinforced housing.



For every original spare part, we strive to provide a qualitative alternative that cuts your costs. Our filter range is sourced from suppliers that provide both original filters and their aftermarket equivalents. Organized by model and engine, our convenient filter kits ensure you always have the correct filters for your machines.

Michiel Heffinck
Account Manager BENE



CONTACT US

Parts

+32 56 612 666

parts@vertimac.com

Machines

+32 56 712 666

sales@vertimac.com

ORDER ONLINE
order.vertimac.com



SINOBOOM



HERE TODAY,
TOMORROW,
THE FUTURE.



www.sinoboom.eu