



# TOP 30 UK & IRELAND RENTAL COMPANIES SURVEY

For many UK businesses, the past year has been one of uncertainty - dominated by the general election and a change of Government along with high but falling inflation and interest rates. This political and economic uncertainty has led many companies to adopt a 'wait and see' attitude resulting in developments being put on hold while waiting for a positive budget that brings investment and renewed confidence.



**Bank interest rates remained relatively high, which, combined with the other factors has resulted in companies 'sitting on their hands' when it comes to equipment investment. Most crane, access and telehandler manufacturers have seen a slower order intake in the first half of the year although this is now showing signs of improving.**

The economic challenges have been exasperated by an ongoing labour shortages, both skilled and unskilled. Even though inflation in October has fallen below the Bank of England's target of two percent, there have been significant price rises over the year, resulting in the cost of nearly all equipment increasing considerably over the past year or two.

Despite the rising prices there has been enough work with very few rental company failures although there have been a number of high profile contractor bankruptcies which will inevitably have a knock on effect for suppliers via bad debts.

The crane sector has seen very few changes to fleet sizes - Ainscough reduced its fleet by 10 units, while the King Lifting, Baldwins, Global Port Services and Bryn Thomas have added to their fleets consolidating their positions as having the second to fifth largest crane fleets in the UK.

The same is broadly true of the access rental companies. Market leader Nationwide Platforms has reduced its fleet by almost 2,000 machines over the past year, with reductions in all equipment categories. The majority of the other large fleets reported growth, including MEP Hire up 100, Summit Platforms and Star Platforms

both up around 600. Access Hire Nationwide continues to dominate the van mounted sector adding an additional 157 van mounts and investing almost £30 million over the past year.

The telehandler sector also follows the same pattern with small movements up and down among the leading companies. Ardent Hire still leads the way with almost 3,000 machines although this will increase next year as it recently announced a £50 million investment in about 750 new telehandlers from Manitou and JCB for delivery next year, which will double its 360 degree fleet to around 200 machines.

## METHODOLOGY

This year we have continued to use the online questionnaire in a bid to make it faster and easier to enter the data. This has proved popular with a record number of responses received. In spite of this, it has been a struggle to obtain data from many of the usual suspects, and it has taken a great deal of chasing and cajoling by email and telephone to bring in the stragglers. For those that 'refused' to take part or simply did not supply information we have used our industry sources to include figures that we think, and hope are representative estimates.

As always, a very big thank you

to all the companies that have participated in this year's survey.

We hope that it will prove to be another useful and insightful report for our many readers both in the UK and around the world. Numerous requests from major contractors regarding its publication date indicate that it is becoming an increasingly popular tool for end users.





# CRANES

Despite the economic uncertainty, increasing prices, extended delivery times, labour shortages and difficulties in moving cranes to and from site, the overall number of cranes from the five leading crane rental companies increased around seven percent. The market is also seeing the first rental companies looking at Chinese built cranes. Sany for example was

sold one of its 60 tonne three axle cranes to RRC Crane Hire.

Crawler crane rental companies have generally maintained or expanded their fleets a little after a few challenging years, possibly as a result of more infrastructure projects coming on stream or in the pipeline.



## TOP MOBILE CRANE COMPANIES

| Company                      | Total  | All Terrain/ Trucks | Rough Terrain | Mobile Towers | Pick & Carry | Trailer Cranes |
|------------------------------|--------|---------------------|---------------|---------------|--------------|----------------|
| Ainscough Crane Hire         | 382 ▼  | 372                 | 0             | 10            | 0            | 0              |
| King Lifting                 | 133 ▲  | 128                 | 0             | 2             | 3            | 0              |
| Baldwins                     | 83 ▲   | 82                  | 0             | 1             | 0            | 0              |
| Global Port Services         | 77 ▲   | 72                  | 0             | 0             | 5            | 0              |
| Bryn Thomas Cranes           | 73 ▲   | 68                  | 0             | 4             | 1            | 0              |
| Kavanagh Crane Hire          | 68 ▲   | 65                  | 0             | 3             | 0            | 0              |
| City Lifting                 | 57 -   | 39                  | 0             | 18            | 0            | 0              |
| Bronzeshield Lifting         | 56 ▼   | 54                  | 0             | 2             | 0            | 0              |
| Emerson Crane Hire           | 55 ▼   | 54                  | 0             | 1             | 0            | 0              |
| Davies Crane Hire            | 53 ▼   | 50                  | 0             | 2             | 1            | 0              |
| Southern Cranes & Access     | 51 ▲   | 47                  | 0             | 3             | 1            | 0              |
| Marsh Plant Hire             | 50 ▼   | 50                  | 0             | 0             | 0            | 0              |
| Sarens UK                    | 49 ▼   | 44                  | 1             | 3             | 1            | 0              |
| Crowland Cranes              | 44 ▲   | 33                  | 4             | 1             | 6            | 0              |
| Dewsbury and Proud           | 42 ▲   | 38                  | 0             | 0             | 4            | 0              |
| Sparrow Crane Hire           | 39 ▲   | 37                  | 0             | 1             | 1            | 0              |
| ABA Cranes                   | 38 ▼   | 37                  | 0             | 1             | 0            | 0              |
| Forsyth of Denny             | 37 ▲   | 36                  | 0             | 1             | 0            | 0              |
| East Cork Crane Hire         | 36 ▲   | 33                  | 1             | 2             | 0            | 0              |
| John Sutch Cranes            | 34 ▼   | 32                  | 0             | 2             | 0            | 0              |
| Macsalvors                   | 33 ▲   | 33                  | 0             | 0             | 0            | 0              |
| Coussens Cranes              | 32 ▲   | 30                  | 1             | 1             | 0            | 0              |
| Cork Crane Hire              | 32 ▲   | 26                  | 0             | 6             | 0            | 0              |
| Emsley Crane Hire            | 30 ▼   | 30                  | 0             | 0             | 0            | 0              |
| Steve Foster Cranes          | 27 ▲   | 23                  | 0             | 2             | 2            | 0              |
| NMT Crane Hire               | 25 -   | 22                  | 0             | 3             | 0            | 0              |
| Bernard Hunter Mobile Cranes | 23 -   | 18                  | 0             | 2             | 3            | 0              |
| Tusker Crane Hire            | 22 ▼   | 21                  | 0             | 1             | 0            | 0              |
| Dowse Crane Hire             | 20 -   | 0                   | 0             | 20            | 0            | 0              |
| RRC Crane Hire               | 19 ▲   | 16                  | 0             | 1             | 2            | 0              |
| Bob Francis                  | 19 -   | 17                  | 0             | 0             | 2            | 0              |
| Thanet Crane Hire            | 19 ▲   | 19                  | 0             | 0             | 0            | 0              |
| PP Engineering               | 18 ▼   | 18                  | 0             | 0             | 0            | 0              |
| Marsden Crane Services       | 17 NEW | 17                  | 0             | 0             | 0            | 0              |
| Bray Cranes                  | 17 ▲   | 17                  | 0             | 0             | 0            | 0              |
| County Lifting Services      | 16 -   | 10                  | 0             | 0             | 6            | 0              |
| Cadman Cranes                | 16 ▼   | 16                  | 0             | 0             | 0            | 0              |
| APH Cranes                   | 14 -   | 14                  | 0             | 0             | 0            | 0              |
| Stoddart Crane Hire          | 13 NEW | 13                  | 0             | 0             | 0            | 0              |
| Cramscene                    | 12 NEW | 10                  | 0             | 0             | 0            | 2              |
| E J McGovern Crane Hire      | 11 NEW | 10                  | 0             | 1             | 0            | 0              |
| Ellis Crane Hire             | 10 NEW | 10                  | 0             | 0             | 0            | 0              |
| Berry Cranes                 | 10 NEW | 9                   | 0             | 1             | 0            | 0              |

Fleet size in the past 12 months has: ▲ Increased ▼ Decreased - Remained the same

## LARGEST MOBILE CRANES

| Company                  | Capacity | Make & Model          | # in Fleet |
|--------------------------|----------|-----------------------|------------|
| Mammoet                  | 1,200    | Liebherr LTM11200-9.1 | N/D        |
| Sarens UK                | 1,200    | Gottwald AK 680-3     | 1          |
| Baldwins                 | 1,000    | Terex Demag AC1000    | N/D        |
| Osprey Heavy Lift        | 800      | Liebherr LTM1800D     | 1          |
| King Lifting             | 800      | Liebherr LTM1750-9.1  | 1          |
| Ainscough Crane Hire     | 800      | Liebherr LTM1750-9.1  | 2          |
| East Cork Crane Hire     | 800      | Liebherr LTM1750-9.1  | 1          |
| Global Port Services     | 800      | Liebherr LTM1800-9.1  | 1          |
| Bernard Hunter           | 700      | Liebherr LTM1650-8.1  | 1          |
| Kavanagh Crane Hire      | 700      | Liebherr LTM 1650-8.1 | 1          |
| Davies Crane Hire        | 700      | Liebherr LTM1650-8.1  | 1          |
| Forsyth of Denny         | 650      | Terex TC 2800         | 1          |
| Bronzeshield Lifting     | 500      | Liebherr LTM1500-8    | 1          |
| NMT                      | 450      | Liebherr LTM1450-8.1  | 1          |
| City Lifting             | 450      | Liebherr LTM1450-8.1  | 1          |
| Emerson Crane Hire       | 450      | Liebherr LTM1450-8.1  | 2          |
| John Sutch Cranes        | 450      | Liebherr LTM1450-8.1  | 1          |
| Cramscene                | 450      | Grove GMK 7450        | 1          |
| Cork Crane Hire          | 350      | Liebherr LTM1350-6.1  | 1          |
| Tusker Crane Hire        | 350      | Terex AC350           | 1          |
| Sparrow Crane Hire       | 300      | Liebherr LTM 1300-6.3 | 1          |
| Bryn Thomas Cranes       | 300      | Grove GMK6300-L       | 2          |
| RRC Crane Hire           | 300      | Demag AC 300-6        | 1          |
| Steve Foster Cranes      | 300      | Grove GMK6300L-1      | 1          |
| Crowland Cranes          | 300      | Grove GMK6300L        | 1          |
| Southern Cranes & Access | 300      | Liebherr LTM1300.6.2  | 1          |
| Walsh Crane Hire         | 250      | Liebherr LTM 1250-5.1 | 1          |
| E J McGovern Crane Hire  | 250      | Liebherr LTM1250-5.1  | 1          |
| Dewsbury and Proud       | 250      | Grove GMK5250XL-1     | 1          |

## TOP TOWER CRANE COMPANIES

| Company                     | Total                 | Rope Luffers | Hydraulic Luffers | "Normal" Self Erectors | Hammerhead/ Flat Tops |
|-----------------------------|-----------------------|--------------|-------------------|------------------------|-----------------------|
| Falcon Tower Crane Services | 412 ▼                 | 140          | 84                | 74                     | 114                   |
| Wolffkran                   | 260 ▲                 | 141          | 39                | 0                      | 80                    |
| Select Plant Hire           | 190 ▲                 | 135          | 20                | 0                      | 35                    |
| London Tower Crane          | 185 ▼                 | 30           | 80                | 15                     | 60                    |
| Mantis Cranes               | 161 ▲                 | 0            | 6                 | 114                    | 41                    |
| City Lifting                | 158 ▼                 | 52           | 20                | 25                     | 61                    |
| Bennetts Cranes             | 141 ▲                 | 32           | 78                | 0                      | 31                    |
| Trident Lifting Solutions   | 98 ▲                  | 54           | 21                | 0                      | 23                    |
| Uperio UK                   | 82 ▼                  | 47           | 10                | 8                      | 17                    |
| Radius Group                | 61 ▲                  | 35           | 8                 | 0                      | 18                    |
| Ladybird Crane Hire         | 60 ▼                  | 0            | 0                 | 30                     | 30                    |
| Irish Crane & Lifting       | 60 -                  | 1            | 0                 | 0                      | 59                    |
| Heathrow Cranes             | 53 ▼                  | 32           | 8                 | 1                      | 12                    |
| Lewis Tower Crane Services  | 44 ▼                  | 9            | 0                 | 7                      | 28                    |
| Abraham Tower Crane Hire    | 31 <small>NEW</small> | 9            | 0                 | 2                      | 20                    |
| Sparrow Crane Hire          | 30 ▲                  | 0            | 0                 | 30                     | 0                     |



## TOP CRAWLER CRANE COMPANIES

| Company                 | Total | Spider Cranes | Telescopic | Lattice | Mini (<12t) |
|-------------------------|-------|---------------|------------|---------|-------------|
| Weldex                  | 157 ▲ | 0             | 51         | 105     | 1           |
| Select Plant Hire       | 83 ▼  | 0             | 46         | 36      | 1           |
| Delden Cranes           | 71 ▲  | 0             | 23         | 48      | 0           |
| AGD Equipment           | 70 ▼  | 0             | 54         | 10      | 6           |
| NRC Plant               | 70 -  | 0             | 15         | 30      | 25          |
| Q Crane & Plant Hire    | 50 -  | 0             | 6          | 42      | 2           |
| G.H. Johnson Crane Hire | 41 -  | 0             | 10         | 31      | 0           |
| BPH Equipment           | 35 -  | 0             | 10         | 25      | 0           |
| Sarens UK               | 22 -  | 0             | 5          | 17      | 0           |
| Jones Crawler Cranes    | 20 -  | 0             | 10         | 8       | 2           |
| Stoddart Crane Hire     | 20 ▲  | 0             | 7          | 7       | 6           |
| Hawks Crane Hire        | 18 -  | 0             | 6          | 12      | 0           |
| Sparrow Crane Hire      | 17 ▲  | 8             | 1          | 0       | 8           |
| City Lifting            | 14 ▲  | 8             | 0          | 1       | 5           |
| Stoddart Crane Hire     | 13 ▲  | 0             | 7          | 0       | 6           |
| Emerson Crane Hire      | 10 -  | 3             | 4          | 0       | 3           |

## LARGEST TOWER CRANE IN FLEET

| Company                     | Capacity | Make & Model      | # in Fleet |
|-----------------------------|----------|-------------------|------------|
| Select Plant Hire           | 66       | Terex CTL1600-66  | 12         |
| Falcon Tower Crane Services | 64       | Jaso J780PA.64    | 5          |
| Wolffkran                   | 60       | Wolff 1250B       | 5          |
| City Lifting                | 50       | Comansa 21LC 750  | 1          |
| Heathrow Cranes             | 36       | Saez SL730        | 1          |
| Bennetts Cranes             | 45       | Wolff 500B        | 1          |
| Radius Group                | 32       | Potain MR608      | 7          |
| London Tower Cranes         | 24       | Jost 416.24       | 5          |
| Trident Lifting Solutions   | 24       | Comansa LCL500-24 | 11         |
| Mantis Cranes               | 20       | Saez TLS80        | 2          |
| Uperio UK                   | 16       | Terex CTt 332-16  | N/D        |
| A Abraham Tower Crane Hire  | 16       | Terex CTT 331-16  | 3          |
| Irish Crane & Lifting       | 16       | Terex CTT 331     | N/D        |
| Sparrow Crane Hire          | 6        | Potain IGOT 130   | 1          |
| Ladybird Crane Hire         | 6        | Potain MDT109     | 4          |

# MAT & TIMBER SERVICES



**CRANE MATS**  
**OUTRIGGER MATS**  
**TEMPORARY ACCESS ROADS**  
**RAMPS**

**For all types of cranes under any application - Nationwide and Overseas**



**TEL: +44 (0) 1264 811005**  
**FAX: +44 (0) 1264 810600**

**e-mail: mats@sarumhardwood.co.uk    web site: www.sarumhardwood.co.uk**

# TOP 30 RENTAL COMPANIES

## CRANE COMPANIES & INVESTMENT

| Company                        | Investment £ | # Bought | # Sold | Depots | Staff |
|--------------------------------|--------------|----------|--------|--------|-------|
| 24/7 Crane Hire                | 1,200,000    | 0        | 0      | 1      | 10    |
| A Abraham Tower Crane Hire     | N/D          | 1        | 1      | 1      | 4     |
| ABA Cranes                     | 1,500,000    | 3        | 5      | 1      | 65    |
| AGD Equipment                  | 2,500,000    | 0        | 0      | 1      | 100   |
| Ainscough Crane Hire           | 27,700,000   | 25       | 42     | 28     | 810   |
| APH Cranes                     | 1,200,000    | 1        | 1      | 1      | 17    |
| Baldwins                       | 8,000,000    | 0        | 0      | N/D    | N/D   |
| Bennetts Cranes                | 1,500,000    | N/D      | N/D    | 1      | N/D   |
| Bernard Hunter Mobile Cranes   | 1,200,000    | 5        | 5      | 1      | 55    |
| Berry Cranes                   | 1,200,000    | 4        | 3      | 1      | 15    |
| Bob Francis                    | 2,500,000    | N/D      | N/D    | 3      | 40    |
| Bray Cranes                    | 1,900,000    | 0        | 0      | 1      | 34    |
| Bronzeshield Lifting           | 3,000,000    | 4        | 6      | 2      | N/D   |
| Bryn Thomas Cranes             | 9,500,000    | 12       | 4      | 5      | 110   |
| Cadman Cranes                  | 2,100,000    | 3        | 2      | 3      | 30    |
| Central Crane Hire (Hull)      | 1,700,000    | 2        | 1      | 1      | 16    |
| Chamberlain Crane Hire         | 1,100,000    | 3        | 2      | 1      | 13    |
| City Lifting                   | 6,000,000    | 10       | 0      | 3      | N/D   |
| Cork Crane Hire                | 5,000,000    | 0        | 0      | 2      | 50    |
| County Lifting Services        | N/D          | 3        | 0      | 1      | 34    |
| Coussens Cranes                | N/D          | 5        | 2      | N/D    | N/D   |
| Cramscene                      | 500,000      | 0        | 1      | 2      | 25    |
| Crowland Cranes                | N/D          | 9        | 6      | 3      | 75    |
| Davies Crane Hire              | 7,500,000    | 0        | 0      | 5      | 120   |
| Delden Cranes                  | N/D          | 0        | 0      | 1      | 20    |
| Dewsbury and Proud             | N/D          | 1        | 0      | N/D    | 70    |
| Dowse Crane Hire               | 350,000      | N/D      | N/D    | 1      | 4     |
| East Cork Crane Hire           | 8,300,000    | 6        | 1      | 2      | 45    |
| E J McGovern Crane Hire        | 3,750,000    | 7        | 4      | 1      | 15    |
| Ellis Crane Hire               | 750,000      | 1        | 1      | 2      | 16    |
| Emerson Crane Hire             | 4,200,000    | 5        | 6      | 2      | 90    |
| Falcon Tower Crane Services    | 8,100,000    | 64       | 78     | 5      | 420   |
| Forsyth of Denny               | 5,300,000    | 7        | 5      | 4      | 142   |
| G.H. Johnson Crane Hire        | 2,000,000    | 3        | 3      | 1      | N/D   |
| GGR Group                      | 2,200,000    | 0        | 0      | 3      | 150   |
| Global Port Services           | 24,600,000   | 20       | 5      | 4      | 204   |
| Heathrow Cranes                | N/D          | 0        | 0      | 2      | N/D   |
| Hird                           | 900,000      | 8        | 0      | 3      | 115   |
| John Sutch Cranes              | 6,800,000    | 5        | 4      | 2      | 90    |
| Kavanagh Crane Hire            | N/D          | 1        | 0      | 5      | 140   |
| King Lifting                   | N/D          | 0        | 0      | 9      | 290   |
| Ladybird Crane Hire            | 200,000      | 0        | 2      | 1      | 20    |
| Lewis Tower Cranes             | 1,000,000    | 3        | 2      | 1      | 14    |
| Lift Mincranes                 | N/D          | 7        | 2      | 2      | 14    |
| Macsalvors                     | 3,900,000    | N/D      | N/D    | 3      | 65    |
| Mantis Cranes                  | 3,000,000    | 0        | 0      | 2      | 21    |
| Marsden Crane Services         | N/D          | 0        | 0      | N/D    | N/D   |
| Marsh Plant Hire               | 6,137,108    | 10       | 6      | 5      | 76    |
| NMT                            | 2,000,000    | 2        | 1      | 2      | 50    |
| Osprey                         | N/D          | N/D      | N/D    | 1      | 85    |
| Radius Group                   | 2,000,000    | 1        | 1      | 1      | 65    |
| Roadcraft (Crane & Plant Hire) | N/D          | 0        | 0      | 1      | 16    |
| RRC Crane Hire                 | 1,800,000    | 2        | 2      | 1      | 30    |
| Select Plant Hire              | 22,600,000   | N/D      | N/D    | 6      | 915   |
| Southern Cranes & Access       | 8,000,000    | 13       | 11     | 3      | 110   |
| Sparrow Crane Hire             | 3,500,000    | 8        | 3      | 7      | 81    |
| Steve Foster Cranes            | 3,200,000    | 0        | 0      | 1      | 55    |
| Stoddart Crane Hire            | 4,000,000    | 6        | 0      | 1      | 34    |
| Stoddart Crane Hire            | 1,000,000    | 2        | 0      | 1      | 27    |
| Thanet Crane Hire              | £1,600,000   | 0        | 0      | 3      | 31    |
| Total Lifting Services         | 842,000      | 0        | 0      | 1      | 12    |
| Trident Lifting Solutions      | N/D          | 0        | 0      | 1      | N/D   |
| Walsh Crane Hire               | 1,250,000    | 2        | 1      | 1      | 14    |
| Weldex                         | 10,000,000   | 0        | 0      | 2      | 140   |
| Wolffkran                      | 9,350,000    | 38       | 9      | 11     | 802   |

## FUEL TYPE

| Hybrid | Electric | Diesel |
|--------|----------|--------|
| 20%    | 0%       | 80%    |
| N/D    | N/D      | N/D    |
| 0%     | 5%       | 95%    |
| 0%     | N/D      | 100%   |
| 3%     | 1%       | 96%    |
| 0%     | 0%       | 100%   |
| N/D    | N/D      | N/D    |
| 0%     | 100%     | 0%     |
| 9%     | 5%       | 86%    |
| 10%    | 0%       | 90%    |
| 0%     | 0%       | 100%   |
| 0%     | 0%       | 100%   |
| 5%     | 5%       | 90%    |
| 0%     | 0%       | 100%   |
| 3%     | 40%      | 57%    |
| 10%    | 0%       | 90%    |
| 4%     | 16%      | 80%    |
| 6%     | 0%       | 94%    |
| 0%     | 0%       | 100%   |
| 3%     | 3%       | 94%    |
| 0%     | 0%       | 100%   |
| 0%     | 0%       | 100%   |
| 5%     | 5%       | 90%    |
| 0%     | 100%     | 0%     |
| 8%     | 0%       | 92%    |
| 5%     | 15%      | 80%    |
| 0%     | 0%       | 100%   |
| N/D    | N/D      | N/D    |
| 0%     | 100%     | 0%     |
| 0%     | 4%       | 96%    |
| 0%     | 0%       | 100%   |
| 39%    | 42%      | 19%    |
| 0%     | 0%       | 100%   |
| 0%     | 98%      | 2%     |
| 25%    | 70%      | 5%     |
| 0%     | 0%       | 100%   |
| 2%     | 0%       | 98%    |
| N/D    | N/D      | N/D    |
| 0%     | 100%     | 0%     |
| 0%     | 85%      | 15%    |
| 65%    | 30%      | 5%     |
| 0%     | 0%       | 100%   |
| 0%     | 100%     | 0%     |
| 0%     | 0%       | 100%   |
| 0%     | 0%       | 100%   |
| 1%     | 0%       | 99%    |
| 0%     | 0%       | 100%   |
| 0%     | 100%     | 0%     |
| 0%     | 0%       | 100%   |
| 7%     | 0%       | 93%    |
| 0%     | 76%      | 24%    |
| 5%     | 5%       | 90%    |
| 10%    | 20%      | 70%    |
| 0%     | 0%       | 100%   |
| 0%     | 0%       | 100%   |
| 0%     | 0%       | 100%   |
| 0%     | 0%       | 100%   |
| 0%     | 100%     | 0%     |
| 0%     | 0%       | 100%   |
| 0%     | 0%       | 100%   |
| 0%     | 0%       | 100%   |



## LARGEST CRAWLER CRANES

| Company                     | Capacity | Make & Model         | # in Fleet |
|-----------------------------|----------|----------------------|------------|
| Sarens UK                   | 1600     | Demag CC8800 BB      | 1          |
| Weldex                      | 1350     | Liebherr LR11350     | N/D        |
| Mammoet                     | 1200     | Gottwald AK-912-1    | N/D        |
| Global Port Services        | 750      | Demag TC 2800        | 1          |
| Ainscough Crane Hire        | 700      | Liebherr LR1700-1.0  | 1          |
| Delden Cranes               | 300      | Liebherr LR1300.1SX  | 2          |
| Select Plant Hire           | 300      | Liebherr LR1300.1SX  | 6          |
| BPH Equipment               | 300      | Liebherr LR 1300.1SX | N/D        |
| Hawks Crane Hire            | 300      | Liebherr LR1300.1SX  | N/D        |
| NRC Plant                   | 275      | HSC SCX2800A-3       | N/D        |
| G.H. Johnson Crane Hire     | 250      | Kobelco CKE2500G-2   | 2          |
| AGD Equipment               | 130      | Sennebogen 6133      | 1          |
| Falcon Tower Crane Services | 110      | Kobelco CKE1100      | 1          |
| Emerson Crane Hire          | 100      | Liebherr LTR1100     | 4          |
| King Lifting                | 100      | Liebherr LTR1100     | 3          |
| Crowland Cranes             | 100      | Kobelco CKE900G      | 1          |

## TOP MINI/SPIDER/PICK & CARRY COMPANIES

| Company                      | Total  | Mini Crawlers | Spider Cranes | Pick & Carry |
|------------------------------|--------|---------------|---------------|--------------|
| GGR Group                    | 259 ▼  | 33            | 147           | 79           |
| Hird                         | 182 ▲  | 7             | 94            | 81           |
| Coppard Plant Hire           | 73 -   | 1             | 65            | 7            |
| Lift Mincranes               | 66 ▲   | 3             | 60            | 3            |
| AMC Hire                     | 57 -   | 1             | 55            | 1            |
| TCA Lifting                  | 29 -   | 6             | 20            | 3            |
| Sparrow Crane Hire           | 17 NEW | 8             | 8             | 1            |
| City Lifting                 | 13 ▲   | 5             | 8             | 0            |
| Crowland Cranes              | 10 ▲   | 2             | 2             | 6            |
| John Taylor Crane Services   | 9 -    | 1             | 8             | 0            |
| Dewsbury and Proud           | 8 NEW  | 4             | 0             | 4            |
| Southern Cranes & Access     | 7 ▲    | 0             | 6             | 1            |
| Emerson Crane Hire           | 6 -    | 3             | 3             | 0            |
| County Lifting Services      | 6 NEW  | 0             | 0             | 6            |
| Bernard Hunter Mobile Cranes | 6 NEW  | 1             | 2             | 3            |
| Stoddart Crane Hire          | 6 NEW  | 6             | 0             | 0            |
| AGD Equipment                | 6 ▼    | 6             | 0             | 0            |

**75**  
Years  
of moving forward

---

# Compact power – a fresh take

---

## The 25 L and 33 L

These fast-erecting cranes combine compact design, high-performance, and the latest technology. This makes them ideal for your house building projects.

[www.liebherr.com/L-cranes](http://www.liebherr.com/L-cranes)

# LIEBHERR

Fast-erecting cranes

**LIEBHERR**  
**25 L**

# Your dependable partner for Powered Access



Powered  
Access hire



Working at  
Height  
training



Safety  
Innovations



Digital account  
management  
services



Local depots  
across the UK



UK's largest  
powered  
access fleet



Contribution  
to Safe  
Working  
at Height



Contribution  
to Safe  
Working  
at Height



Innovative  
Technology  
Prize  
(Harness ON)

 **Nationwide  
Platforms**  
A **LOXAM** Company



**YOUR  
SAFETY  
OUR  
PRIORITY**



**0345 745 0000**  
nationwideplatforms.co.uk




The powered access sector is a bit of a mixed bunch however the majority of companies expanded their fleets with movements within 10 percent or so. Nationwide Platforms remains well out in front but made a substantial purge of its fleet as it looks to reduce the average age and bring in new technology.

Access Hire Nationwide continues to dominate the van mounted sector adding a further 10 percent to its fleet which now stands at 1,730 having invested just shy of £30 million over the past year.

## TOP POWERED ACCESS COMPANIES

| Company                     | Units in Fleet | Articulated Booms |        | Straight Telescopic Booms |        | Self Propelled Slab Scissors | Mast Lifts | Mast Booms | Spider Lifts | Push Arouds | Rough Terrain Scissor Lifts |        | Truck Mounts |               | Van Mounts | Trailer Lifts |
|-----------------------------|----------------|-------------------|--------|---------------------------|--------|------------------------------|------------|------------|--------------|-------------|-----------------------------|--------|--------------|---------------|------------|---------------|
|                             |                | Electric Hybrid   | Diesel | Electric Hybrid           | Diesel |                              |            |            |              |             | Electric Hybrid             | Diesel | 3.5t GVW     | Over 3.5t GVW |            |               |
| Nationwide Platforms        | 11,735 ▼       | 986               | 2,219  | 669                       | 500    | 3,475                        | 823        | 522        | 128          | 137         | 110                         | 1,654  | 89           | 135           | 288        | 0             |
| MEP Hire                    | 7,400 ▲        | 0                 | 0      | 0                         | 0      | 600                          | 0          | 0          | 0            | 6,800       | 0                           | 0      | 0            | 0             | 0          | 0             |
| Speedy Hire                 | 7,343 ▼        | 438               | 352    | 0                         | 35     | 2,510                        | 626        | 323        | 1            | 2,764       | 0                           | 286    | 0            | 7             | 0          | 1             |
| Summit Platforms            | 6,616 ▲        | 611               | 1,361  | 2                         | 367    | 2,011                        | 354        | 176        | 0            | 323         | 128                         | 1,283  | 0            | 0             | 0          | 0             |
| AFI-Uplift                  | 5,997 ▼        | 467               | 1,023  | 7                         | 351    | 2,830                        | 262        | 93         | 55           | 17          | 35                          | 599    | 55           | 18            | 178        | 7             |
| Sunbelt Rentals             | 4,827 ▲        | 9                 | 897    | 261                       | 234    | 1,650                        | 363        | 0          | 25           | 865         | 68                          | 455    | 0            | 0             | 0          | 0             |
| Star Platforms              | 4,168 ▲        | 242               | 118    | 0                         | 6      | 2,039                        | 358        | 144        | 0            | 936         | 128                         | 197    | 0            | 0             | 0          | 0             |
| GTAccess                    | 3,171 ▼        | 350               | 350    | 20                        | 50     | 1,700                        | 30         | 220        | 40           | 30          | 45                          | 270    | 30           | 1             | 0          | 35            |
| HSS Hire                    | 3,040 ▼        | 0                 | 0      | 0                         | 0      | 400                          | 60         | 80         | 0            | 2,500       | 0                           | 0      | 0            | 0             | 0          | 0             |
| Briggs                      | 2,690 —        | 500               | 0      | 50                        | 200    | 1,400                        | 60         | 60         | 10           | 300         | 50                          | 50     | 0            | 0             | 0          | 10            |
| Charles Wilson Engineers    | 2,576 ▲        | 285               | 560    | 0                         | 98     | 980                          | 35         | 42         | 12           | 240         | 60                          | 261    | 0            | 0             | 0          | 3             |
| Advanced Access Platforms   | 2,427 ▲        | 362               | 33     | 13                        | 44     | 1,026                        | 130        | 42         | 26           | 663         | 44                          | 42     | 0            | 0             | 0          | 2             |
| JMS Powered Access          | 2,361 ▲        | 150               | 171    | 1                         | 31     | 646                          | 130        | 48         | 75           | 900         | 36                          | 166    | 4            | 0             | 0          | 3             |
| Height for Hire             | 2,300 ▼        | 350               | 250    | 0                         | 350    | 700                          | 50         | 40         | 75           | 150         | 10                          | 73     | 50           | 40            | 160        | 2             |
| Access Hire Nationwide      | 1,840 ▲        | 0                 | 0      | 0                         | 0      | 0                            | 0          | 0          | 0            | 0           | 0                           | 0      | 0            | 110           | 1,730      | 0             |
| Quick Reach Powered Access  | 1,798 —        | 206               | 242    | 0                         | 123    | 288                          | 201        | 72         | 15           | 234         | 112                         | 305    | 0            | 0             | 0          | 0             |
| Hire Safe Solutions         | 1,678 ▲        | 0                 | 600    | 0                         | 475    | 500                          | 0          | 20         | 23           | 60          | 0                           | 0      | 0            | 0             | 0          | 0             |
| KDM Hire                    | 1,249 ▲        | 91                | 138    | 7                         | 70     | 517                          | 104        | 27         | 16           | 148         | 10                          | 94     | 2            | 0             | 19         | 6             |
| Elavation                   | 1,166 ▲        | 488               | 26     | 0                         | 0      | 432                          | 36         | 12         | 48           | 62          | 38                          | 12     | 0            | 0             | 0          | 12            |
| Charleville Hire & Platform | 1,123 ▲        | 54                | 62     | 3                         | 46     | 634                          | 85         | 26         | 2            | 165         | 2                           | 44     | 0            | 0             | 0          | 0             |
| Mr Plant Hire               | 1,020 ▲        | 36                | 19     | 2                         | 0      | 275                          | 51         | 5          | 4            | 595         | 22                          | 11     | 0            | 0             | 0          | 0             |
| JPS Platforms               | 895 ▲          | 42                | 43     | 0                         | 2      | 506                          | 56         | 26         | 4            | 149         | 1                           | 66     | 0            | 0             | 0          | 0             |
| OK Tool Hire                | 872 ▲          | 444               | 63     | 0                         | 26     | 240                          | 23         | 15         | 2            | 30          | 0                           | 25     | 2            | 0             | 0          | 2             |
| Horizon Platforms           | 855 ▲          | 91                | 0      | 0                         | 0      | 485                          | 0          | 124        | 0            | 155         | 0                           | 0      | 0            | 0             | 0          | 0             |
| 1 Up Access                 | 803 ▲          | 175               | 149    | 5                         | 34     | 230                          | 0          | 40         | 0            | 0           | 20                          | 150    | 0            | 0             | 0          | 0             |
| Select Plant Hire           | 798 ▲          | 7                 | 21     | 0                         | 0      | 555                          | 197        | 8          | 0            | 0           | 4                           | 6      | 0            | 0             | 0          | 0             |
| Mainline                    | 694 ▲          | 145               | 56     | 6                         | 4      | 334                          | 16         | 29         | 0            | 17          | 53                          | 34     | 0            | 0             | 0          | 0             |
| UK Tool Hire Group          | 678 NEW        | 54                | 82     | 2                         | 7      | 222                          | 31         | 31         | 11           | 33          | 6                           | 86     | 19           | 0             | 94         | 0             |
| Smiths Equipment Hire       | 657 ▼          | 83                | 23     | 0                         | 0      | 300                          | 40         | 30         | 5            | 100         | 19                          | 53     | 0            | 0             | 0          | 4             |
| Powered Access Services     | 642 ▲          | 72                | 161    | 0                         | 25     | 214                          | 0          | 12         | 0            | 3           | 13                          | 142    | 0            | 0             | 0          | 0             |
| Premier Platforms           | 628 ▲          | 90                | 53     | 0                         | 5      | 265                          | 19         | 28         | 1            | 26          | 61                          | 76     | 2            | 0             | 0          | 2             |
| Gwynedd Forklifts           | 614 ▲          | 48                | 155    | 0                         | 26     | 160                          | 16         | 41         | 2            | 8           | 2                           | 154    | 2            | 0             | 0          | 0             |
| Hird                        | 569 ▲          | 201               | 32     | 4                         | 2      | 203                          | 0          | 13         | 7            | 50          | 0                           | 55     | 2            | 0             | 0          | 0             |
| Access Plus                 | 530 —          | 60                | 40     | 0                         | 20     | 310                          | 15         | 20         | 0            | 40          | 0                           | 20     | 5            | 0             | 0          | 0             |
| Ord Industrial              | 500 NEW        | 26                | 200    | 0                         | 28     | 120                          | 37         | 12         | 6            | 22          | 0                           | 48     | 1            | 0             | 0          | 0             |
| Bella Access                | 475 —          | 60                | 15     | 0                         | 20     | 350                          | 30         | 15         | 5            | 50          | 5                           | 25     | 0            | 0             | 0          | 0             |
| Ashbrook                    | 425 ▲          | 70                | 81     | 0                         | 22     | 0                            | 24         | 0          | 0            | 0           | 130                         | 98     | 0            | 0             | 0          | 0             |
| One Stop Hire               | 420 ▲          | 3                 | 0      | 0                         | 0      | 84                           | 0          | 3          | 3            | 327         | 0                           | 0      | 0            | 0             | 0          | 0             |
| Astley Hire                 | 335 NEW        | 52                | 0      | 0                         | 0      | 143                          | 45         | 32         | 0            | 60          | 2                           | 0      | 0            | 0             | 0          | 1             |
| United Powered Access       | 300 ▲          | 27                | 20     | 0                         | 10     | 120                          | 0          | 18         | 0            | 15          | 0                           | 90     | 0            | 0             | 0          | 0             |
| The Platform Hire Centre    | 287 ▲          | 31                | 26     | 0                         | 6      | 140                          | 18         | 24         | 0            | 14          | 2                           | 26     | 0            | 0             | 0          | 0             |
| Smart Platform Rental       | 267 ▲          | 0                 | 0      | 0                         | 0      | 0                            | 0          | 0          | 0            | 0           | 0                           | 0      | 228          | 19            | 20         | 0             |
| Orion Access                | 178 NEW        | 45                | 10     | 0                         | 1      | 20                           | 0          | 4          | 30           | 4           | 0                           | 8      | 35           | 21            | 0          | 0             |
| PG Platforms                | 175 NEW        | 25                | 6      | 0                         | 0      | 80                           | 4          | 8          | 5            | 0           | 2                           | 20     | 11           | 6             | 7          | 0             |

Fleet size in the last 12 months has: ▲ Increased ▼ Decreased — Remained the same

TOP VEHICLE MOUNTED FLEETS

| Company                     | Total   | Truck Mount |               | Straight Telescopic Booms |
|-----------------------------|---------|-------------|---------------|---------------------------|
|                             |         | 3.5t GVW    | Over 3.5t GVW |                           |
| Access Hire Nationwide      | 1,840 ▲ | 0           | 110           | 1,730                     |
| Nationwide Platforms        | 512 ▼   | 89          | 135           | 288                       |
| Smart Platform Rental       | 267 ▲   | 228         | 19            | 20                        |
| AFI-Uplift                  | 251 ▼   | 55          | 18            | 178                       |
| Height for Hire             | 240 ▼   | 100         | 40            | 100                       |
| UK Tool Hire Group          | 114 NEW | 19          | 0             | 94                        |
| Blade Access                | 108 ▲   | 50          | 50            | 8                         |
| Orion Access                | 56 ▲    | 35          | 21            | 0                         |
| GTAccess                    | 31 -    | 30          | 1             | 0                         |
| Clearview Cleaning Services | 29 ▲    | 2           | 27            | 0                         |
| Maps Platforms              | 27 -    | 11          | 1             | 15                        |
| PG Platforms                | 24 -    | 11          | 6             | 7                         |
| KDM Hire                    | 21 -    | 2           | 0             | 19                        |
| Clerkin Elevation           | 20 ▼    | 10          | 10            | 0                         |



LARGEST SCISSOR LIFTS

| Company                     | Model                      | Working Height m | # in Fleet |
|-----------------------------|----------------------------|------------------|------------|
| Hire Safe Solutions         | Dingli 3730HRT             | 37               | 20         |
| AFI-Uplift                  | Hollandlift Megastar G-320 | 34               | N/D        |
| JMS Powered Access          | JLG Liftlux 320-30         | 34               | N/D        |
| Nationwide Platforms        | Holland Lift HL340D        | 34               | 3          |
| Mainline                    | Holland Lift G320          | 34               | 4          |
| Speedy Powered Access       | Holland Lift G320          | 34               | N/D        |
| Reactive Rentals            | Holland Lift HL330E        | 33               | 1          |
| 1 Up Access                 | Dingli 3214DC              | 32               | 2          |
| Powered Access Services     | Dingli 2814                | 28               | 6          |
| Height for Hire             | JLG Liftlux 245-25         | 26               | 11         |
| KDM Hire                    | Holland Lift 275DS         | 25               | N/D        |
| UK Tool Hire Group          | Dingli 2212DC              | 22               | N/D        |
| Charles Wilson Engineers    | Dingli 2223RTB             | 22               | 14         |
| Sunbelt Rentals             | Dingli 2223DC              | 22               | 2          |
| Dromad Hire                 | Dingli 2212DC              | 22               | 6          |
| GTAccess                    | Dingli 2212                | 22               | N/D        |
| Mr Plant Hire               | Dingli 222DC               | 22               | 2          |
| Astley Hire                 | Dingli 2212                | 22               | 72         |
| Powered Access Services     | Dingli 2212                | 22               | 4          |
| Summit Platforms            | dingli 2223                | 22               | 4          |
| Ord Industrial              | Dingli 223RT               | 22               | 1          |
| Charleville Hire & Platform | Skyjack SJ9664RT           | 22               | 3          |
| Charles Wilson Engineers    | Dingli 1912DC              | 19               | 8          |

LARGEST SPIDER LIFTS

| Company                       | Model               | Working Height m | # in Fleet |
|-------------------------------|---------------------|------------------|------------|
| TCA Lifting                   | Palazzani XTJ52     | 52               | 1          |
| JMS Powered Access            | Falcon FS520C       | 52               | N/D        |
| Clearview Cleaning Services   | Platform Basket 43T | 43               | 1          |
| Orion Access                  | Easylift R420       | 42               | 1          |
| Hire Safe Solutions           | Teupan FS420        | 42               | 1          |
| Clerkin Elevation             | Ommelift 4200RBDJ   | 42               | 1          |
| Paramount Platforms           | Ommelift 4200       | 40               | 2          |
| Elev8 Access Platforms        | Teupan Leo 36T      | 36               | 2          |
| AFI-Uplift                    | Teupan Leo 36T      | 36               | N/D        |
| Elevation                     | Hinowa 33.17        | 33               | 4          |
| PG Platforms                  | Hinowa 33.17        | 33               | 1          |
| KDM Hire                      | Hinowa 33.17        | 33               | N/D        |
| Sunbelt Rentals               | Hinowa 26.14        | 26               | 6          |
| Advanced Access Platforms     | Hinowa 26.14        | 26               | 4          |
| Hird                          | Hinowa 26.14        | 26               | 1          |
| UK Tool Hire Group            | Cela DT25           | 25               | 1          |
| Tracked Access                | Multitel SMX250     | 25               | 2          |
| Mr Plant Hire                 | Hinowa 26.14        | 24               | 1          |
| Ord Industrial and Commercial | Teupan Leo 21GT     | 21               | 1          |
| Newmarket Plant Hire          | Hinowa 20.10        | 20               | 4          |
| OK Tool Hire                  | Hinowa 20.10        | 20               | 2          |

LARGEST TRUCK MOUNTED LIFTS

| Company                     | Model           | Working Height m | # in Fleet |
|-----------------------------|-----------------|------------------|------------|
| Blade Access                | Palfinger P1000 | 102.5            | N/D        |
| Elev8 Access Platforms      | Palfinger P900  | 90               | 2          |
| Height for Hire             | Bronto S90HLA   | 90               | N/D        |
| Nationwide Platforms        | Bronto S90HLA   | 90               | N/D        |
| AFI-Uplift                  | Palfinger P750  | 75               | N/D        |
| Clearview Cleaning Services | Ruthmann T750HF | 75               | 2          |
| ACS Access                  | Palfinger WT700 | 70               | N/D        |
| Orion Access                | Palfinger P570  | 57               | 1          |
| Smart Platform Rental       | Bronto 56XR     | 56               | 2          |
| BMS                         | Bronto 56XR     | 56               | N/D        |
| PG Platforms                | Ruthmann T510HF | 51               | 1          |
| NSS Hire                    | Palfinger P450  | 45               | N/D        |



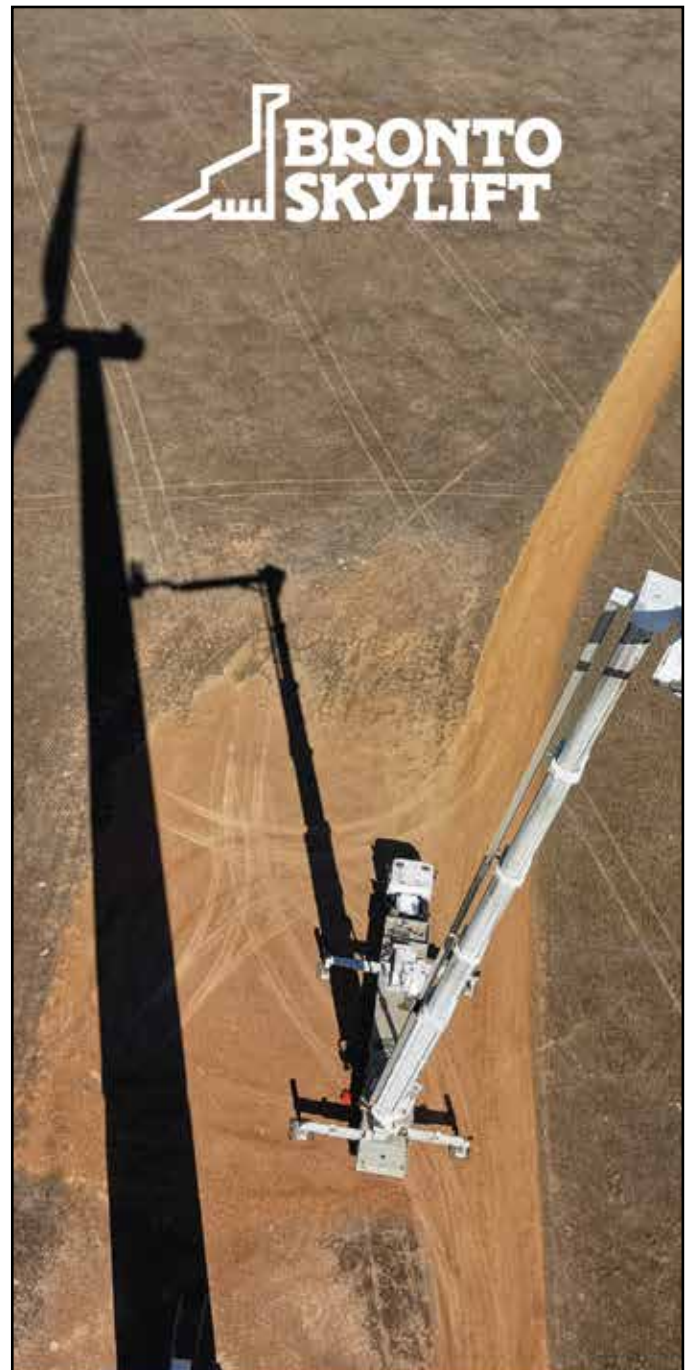


## LARGEST BOOM LIFTS

| Company                     | Model                  | Working Height m | # in Fleet |
|-----------------------------|------------------------|------------------|------------|
| Hire Safe Solutions         | XCMG XGS70K            | 70               | 3          |
| JMS Powered Access          | JLG1850SJ              | 58               | 1          |
| Nationwide Platforms        | JLG1850SJP             | 58               | 1          |
| AFI-Uplift                  | Zoomlion ZT58J         | 58               | N/D        |
| Ord Industrial              | Genie SX180            | 57               | 1          |
| Hire Safe Solutions         | JLG JL1500AJP          | 48               | 22         |
| KDM Hire                    | Genie SX150            | 48               | N/D        |
| Advanced Access Platforms   | Genie SX150            | 48               | 1          |
| Mainline                    | JLG 1500AJP            | 46               | 8          |
| 1 Up Access                 | Dingli BA44            | 44               | 4          |
| Charles Wilson Engineers    | Genie ZX135            | 43               | 7          |
| AFI-Uplift                  | GenieSX135             | 43               | N/D        |
| Gwynedd Forklifts           | Genie ZX135            | 43               | 12         |
| Sunbelt Rentals             | Genie ZX135/JLG1350SJP | 43               | 5          |
| Summit Platforms            | Genie ZX135            | 43               | 9          |
| Charleville Hire & Platform | Genie ZX135            | 43               | 1          |
| Powered Access Services     | ZX135/70               | 43               | 4          |
| GTAccess                    | Genie S125             | 40               | N/D        |

## PERCENTAGE OF FLEET HYBRID/ELECTRIC/DIESEL

| Company                     | Electric % | Hybrid % | Diesel % |
|-----------------------------|------------|----------|----------|
| 1 Up Access                 | 40         | 20       | 40       |
| Acrolift                    | 40         | 50       | 10       |
| Advanced Access Platforms   | 46         | 47       | 7        |
| AFI-Uplift                  | 57         | 6        | 37       |
| APH Cranes & Access         | 41         | 6        | 53       |
| Ashbrook                    | 39         | 11       | 50       |
| Astley Limited              | 91         | 9        | 0        |
| Charles Wilson Engineers    | 35         | 25       | 40       |
| Charleville Hire & Platform | 81         | 2        | 17       |
| Clearview Cleaning Services | 0          | 5        | 95       |
| Elavation                   | 44         | 48       | 8        |
| GTAccess                    | 65         | 10       | 25       |
| Gwynedd Forklifts           | 65         | 10       | 25       |
| Hird                        | 40         | 30       | 30       |
| Hire Safe Solutions         | 18         | 13       | 70       |
| Horizon Platforms           | 90         | 10       | 0        |
| JMS Powered Access          | 40         | 20       | 40       |
| JPS Platforms               | 71         | 8        | 21       |
| KDM Hire                    | 69         | 4        | 27       |
| Mainline                    | 79         | 7        | 14       |
| Maps Platforms              | 10         | 5        | 85       |
| MEP Hire                    | 100        | 0        | 0        |
| Mr Plant Hire               | 94         | 5        | 1        |
| Nationwide Platforms        | 49         | 8        | 43       |
| Newmarket Plant Hire        | 31         | 41       | 28       |
| OK Tool Hire                | 70         | 2        | 28       |
| One Stop Hire               | 99         | 1        | 0        |
| Ord Industrial              | 30         | 30       | 40       |
| Orion Access                | 10         | 40       | 50       |
| Parmount Platforms          | 31         | 52       | 17       |
| PG Platforms                | 20         | 40       | 40       |
| Powered Access Services     | 40         | 15       | 45       |
| Premier Platforms           | 43         | 20       | 37       |
| Select Plant Hire           | 94         | 1        | 5        |
| Smart Platform Rental       | 10         | 0        | 90       |
| Star Platforms              | 87         | 5        | 8        |
| Summit Platforms            | 16         | 40       | 44       |
| Sunbelt Rentals             | 43         | 6        | 51       |
| The Platform Hire Centre    | 70         | 10       | 20       |
| Tracked Access              | 0          | 0        | 100      |
| UK Tool Hire Group          | 45         | 10       | 45       |
| United Powered Access       | 50         | 25       | 25       |



**BRONTO SKYLIFT**

**SAFETY ABOVE ALL**

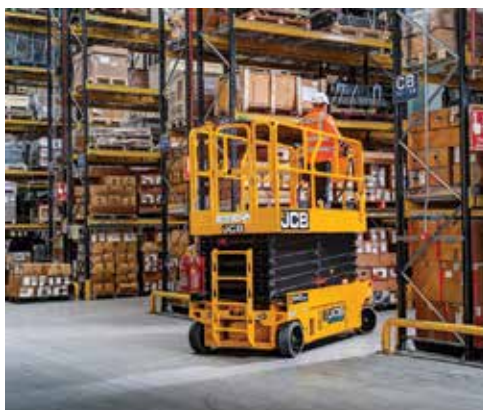
Your partner in reliable, safe and tailor-made solutions for working at height.



# TOP 30 RENTAL COMPANIES

## COMPANY DETAILS & INVESTMENT

| Company                     | Investment £ | Depots | Staff | # Bought | # Sold |
|-----------------------------|--------------|--------|-------|----------|--------|
| 1 Up Access                 | 2,000,000    | 1      | 45    | 77       | 22     |
| Advanced Access Platforms   | 7,048,000    | 6      | 87    | N/D      | N/D    |
| Access Hire Nationwide      | 29,400,000   | 4      | 255   | 0        | 0      |
| Acrolift                    | 40,000       | 1      | 4     | 1        | N/D    |
| AFI-Uplift                  | N/D          | 18     | 318   | 0        | 0      |
| APH Cranes & Access         | 450,000      | 1      | 10    | 10       | 4      |
| Astley Limited              | 385,000      | 1      | 23    | 22       | 3      |
| Charles Wilson Engineers    | 9,000,000    | 29     | 390   | 637      | 345    |
| Charville Hire & Platform   | 3,000,000    | 1      | 30    | 124      | 46     |
| Clearview Cleaning Services | 10,000,000   | 5      | 75    | 15       | 6      |
| Elavation                   | 1,500,000    | 2      | 52    | 22       | 0      |
| GTAcess                     | 8,000,000    | 12     | 165   | 0        | 0      |
| Gwynedd Forklifts           | 2,000,000    | 2      | 60    | 88       | 66     |
| Hird                        | 2,396,750    | 3      | 108   | 77       | 44     |
| Hire Safe Solutions         | 31,625,000   | 2      | 85    | 427      | 158    |
| Horizon Platforms           | N/D          | 1      | 75    | 0        | 0      |
| JMS Powered Access          | N/D          | 4      | 75    | 0        | 0      |
| JPS Platforms               | 975,000      | 1      | 35    | 79       | 25     |
| KDM Hire                    | N/D          | 7      | 235   | 0        | 0      |
| Mainline                    | 6,000,000    | 1      | 44    | N/D      | N/D    |
| Maps Platforms              | N/D          | 1      | 5     | 0        | 0      |
| MEP Hire                    | 8,000,000    | 13     | 275   | 850      | 100    |
| Mr Plant Hire               | 1,200,000    | 3      | 67    | N/D      | N/D    |
| Nationwide Platforms        | N/D          | 30     | 849   | N/D      | N/D    |
| Newmarket Plant Hire        | 350,000      | 6      | 55    | 15       | 2      |
| OK Tool Hire                | 1,000,000    | 2      | 22    | 74       | 35     |
| One Stop Hire               | 600,000      | 22     | 270   | 75       | 0      |
| Ord Industrial              | 4,000,000    | 2      | 80    | 102      | 16     |
| Orion Access                | 1,100,000    | 1      | 45    | 26       | 24     |
| Paramount Platforms         | 1,316,100    | 2      | 25    | 5        | 2      |
| PG Platforms                | 1,200,000    | N/D    | 28    | 24       | 23     |
| Powered Access Services     | 640,000      | 3      | 39    | 205      | 104    |
| Premier Platforms           | 1,000,000    | 3      | 30    | 0        | 0      |
| Select Plant Hire           | 855,000      | 2      | 16    | 109      | 14     |
| Smart Platform Rental       | 3,800,000    | 7      | 92    | N/D      | N/D    |
| Star Platforms              | 4,500,000    | 7      | 177   | 0        | 0      |
| Summit Platforms            | 18,300,000   | 10     | 308   | 70       | 7      |
| Sunbelt Rentals             | 9,000,000    | 260    | 4,400 | 531      | 802    |
| The Platform Hire Centre    | 750,000      | 1      | 18    | 66       | 0      |
| Tracked Access              | 1,100,000    | 1      | 4     | 11       | 0      |
| United Powered Access       | 1,500,000    | 1      | 14    | N/D      | N/D    |





**No matter your specialisation, you deserve our special attention.**

The same dedication that we attribute to the manufacturing of our aerial platforms. No less than 14 models divided into six families, designed to respond perfectly to your requirements and your specific professional needs: **from tree care to the maintenance of buildings, installations and infrastructures; from restoration to work on high-voltage lines.**

Discover the advantages of the CMC range on our website.

**CMC**  
THE SPECIALIFT

[www.cmclift.com](http://www.cmclift.com)



# TELEHANDLERS

While market leader Ardent maintained the size of its telehandler fleet this year, its nearest competitors made minor reductions, Ardent is now roughly twice the size as the second largest - Morris Leslie Plant Hire. Ardent looks set to

maintain or increase its leadership, having announced a further £50 million investment in 750 new telehandlers for delivery next year, while planning to more than double its 360 degree fleet to around 200 units.



## TOP TELESCOPIC HANDLER COMPANIES

| Company                  | Total   | Fixed incl Compact and HD | 360° | Compact | Heavy Duty | Electric | Largest Fixed | Largest 360° | Depots | Employees | Investment £ |
|--------------------------|---------|---------------------------|------|---------|------------|----------|---------------|--------------|--------|-----------|--------------|
| Ardent Hire              | 2,980 ▼ | 2,871                     | 109  | 657     | 2          | 0        | 20m           | 35m          | N/D    | N/D       | N/D          |
| Morris Leslie Plant Hire | 1,904 ▼ | 1,904                     | 0    | 290     | 0          | 0        | 20m           | N/A          | 15     | 245       | N/D          |
| Sunbelt Rentals          | 1,846 ▼ | 1,832                     | 14   | 317     | 0          | 18       | 20m           | 26m          | 260    | 4,400     | 19,000,000   |
| UK Forks                 | 1,722 ▼ | 1,657                     | 65   | 159     | 8          | 17       | 20m           | 35m          | 6      | 124       | N/D          |
| Charles Wilson Engineers | 1,603 ▲ | 1,575                     | 28   | 250     | 0          | 0        | 20 m          | 26m          | 29     | 390       | 18,000,000   |
| Hessle Fork Trucks       | 789 ▲   | 733                       | 56   | 48      | 35         | 0        | 18m           | 35m          | 4      | 55        | 6,550,000    |
| Plant Hire UK            | 755 -   | 755                       | 0    | 20      | 380        | 0        | 20m           | N/A          | 1      | 20        | 17,000,000   |
| Greenwood Hire           | 550 ▲   | 350                       | 200  | 0       | 150        | 0        | 10m           | 35m          | 9      | 15        | N/D          |
| Jarvie Plant             | 525 -   | 498                       | 38   | 116     | 381        | 1        | 20m           | 30m          | 11     | 205       | N/D          |
| H. E. Services           | 499 ▼   | 499                       | 0    | 176     | 0          | 0        | 20m           | N/A          | 11     | 118       | 30,000,000   |
| Boles Hire               | 495 ▲   | 395                       | 100  | 95      | 6          | 1        | 20m           | 51m          | 1      | 25        | N/D          |
| GT Lifting Solutions     | 492 ▲   | 195                       | 297  | 30      | 120        | 0        | N/D           | 39m          | 3      | 42        | 18,000,000   |
| Plantforce               | 400 ▼   | 400                       | 0    | 20      | 380        | 0        | 20m           | N/A          | 7      | 20        | 17,000,000   |
| Summit Platforms         | 393 ▲   | 393                       | 0    | N/D     | N/D        | N/D      | N/D           | N/A          | 10     | N/D       | N/D          |
| B&T Plant Hire           | 360 ▲   | 360                       | 0    | 60      | 0          | 0        | 18m           | N/A          | 2      | 30        | 2,500,000    |
| Ashbrook                 | 328 ▲   | 328                       | 0    | 77      | 0          | 0        | N/D           | N/A          | N/D    | N/D       | N/D          |
| Thomas Plant             | 320 NEW | 320                       | 0    | 120     | 0          | 0        | N/D           | N/A          | 5      | N/D       | N/D          |
| Fairfax Plant Hire       | 260 ▲   | 260                       | 0    | 100     | 0          | 0        | 20m           | N/A          | 3      | 106       | 12,000,000   |
| Chippindale Plant        | 236 ▼   | 236                       | 0    | 40      | 196        | 0        | N/D           | N/A          | 8      | 111       | 7,000,000    |
| KDM Hire                 | 144 ▲   | 135                       | 9    | 48      | 3          | 0        | N/D           | 30m          | 7      | 235       | N/D          |
| Gwynedd Forklifts        | 138 ▲   | 138                       | 0    | 21      | 0          | 4        | 20m           | N/A          | 2      | 60        | 600,000      |
| Hubbway Plant Hire       | 135 -   | 95                        | 0    | 30      | 10         | 0        | 18m           | N/A          | 1      | N/D       | N/D          |
| L Lynch Plant Hire       | 130 -   | 80                        | 0    | 50      | 0          | 0        | 20m           | N/A          | 5      | N/D       | N/D          |
| Mervyn Lambert Plant     | 130 -   | 100                       | 0    | 30      | 0          | 0        | 18m           | N/A          | 4      | N/D       | N/D          |

N/D Not disclosed



- NATIONWIDE HIRE & SALES
- 25 YEARS EXPERIENCE
- MERLO, MAGNI & MANITOU SPECIALISTS
- ROTATING TELEHANDLERS
- HEAVY LIFT TELEHANDLERS
- SPECIALIST ATTACHMENTS
- CONTRACT LIFT SERVICES, LIFT PLANS & RAMS
- CPC TRAINED WORKFORCE
- INDUSTRY LEADING SERVICE BACK UP

# Transforming the World of Lifting



HIRE SALES OPERATORS SERVICE PARTS

THE UK'S LEADING HIRE & SALES OF ROTO & HEAVY LIFT TELEHANDLERS



**MANITOU**  
HANDLING YOUR WORLD

**MERLO**

**MAGNI**  
TELESCOPIC HANDLERS

For all your lifting requirements call GT Lifting  
[GTlift.co.uk](http://GTlift.co.uk) 0345 603 7180

HIREDesk@GTLIFT.CO.UK | SALES@GTLIFT.CO.UK | PARTSANDSERVICE@GTLIFT.CO.UK  
 DEPOTS IN GATWICK, LEICESTER, YORK, GLASGOW

**GT LIFTING**