

ANOTHER 4,000T ALL TERRAIN

Chinese manufacturer **Sany** has completed the first unit of its 4,000 tonne, nine axle All Terrain crane, the SAC4000T. Currently only available in China, it features an 81 metre six section boom and can be topped with up to 106 metres of lattice extension, or a 124 metre Wind Power Jib that takes the maximum tip height to around 210 metres. The capacities can be boosted with a heavy duty Superlift device.



The crane can handle up to 375 tonnes on 100 metres of boom and shortest extension at an 18 metre radius, or 320 tonnes on 120 metres of stick at a 24 metre radius. Overall width is 3.6 metres, length 26.7 metres and overall height 7.4 metres. The cruciform outrigger footprint measures 15 by 15 metres, while the counterweight is a relatively modest 300 tonnes.

Travel weight with superstructure and outriggers on board is 181 tonnes which means axle weights of 20 tonnes or more but it can travel at its full 60kph road speed. With superstructure, boom, outriggers and one hoist in place it weighs 357 tonnes and can travel at 10kph, or with full Superlift device added it weighs 411 tonnes and speed is limited to 5kph. The move follows the launch of the 11 axle 4,000 tonne XCMG at the start of this year.



A BIGGER FLAT TOP FROM POTAIN

Potain launched its largest flat top tower crane to date - the 80 tonne MCT 2205 - at Bauma China. The new crane is already in production at Manitowoc's plant in Zhangjiagang, China, with the first eight units sold to Abu Dhabi international tower crane group NFT.

The new crane can be rigged with an 80 metre jib with a tip capacity of 23.6 tonnes. Free standing heights up to 99 metres are possible, depending on whether the R99A or R910A the tower/mast is used. Jib can also be extended to 85 metres.

The maximum capacity is available at five to 26.3 metres with full jib installed, or 30.5 metres on a 45 or 50 metre jib. Alternatively, 72.9 tonnes can be handled at the jib tip of a four section, 30 metre jib. The crane is fitted with Potain's V140S Vision Cab.



EU CONFIRMS TARIFF RATES

The European Commission has published its 'Definitive' ruling on the tariff levels that it proposes to apply to aerial work platforms made in China when they are imported into the European Union.

The 'Definitive' and one assumes final ruling - after reviewing all the submissions - is that there was some evidence of dumping, but its main concern appears to be the rapid surge in sales of Chinese built products over the period investigated. However, it has reduced most of the tariff levels that it originally proposed.

The final duties will be:

Anti-Dumping Duties that will apply Company	Definitive Duty to apply	Original Duty proposed
Hunan Sinoboom Intelligent Equipment	49.3%	56.1%
Oshkosh JLG (Tianjin) Equipment Technology	22.5%	23.6%
Terex (Changzhou) Machinery - Genie	22.9%	25.5%
Zhejiang Dingli Machinery	23.6%	31.3%
Other cooperating companies	30.2%	32%
All other companies	49.3%	56.1%

Country	Co-operating producers not sampled: Name
PRC	Lingong: Heavy Machinery
PRC	Zoomlion Intelligent Access Machinery
PRC	XCMG Fire Fighting Safety Equipment
PRC	Sunward Intelligent Equipment
PRC	Haulotte Access Equipment Manufacturing (Changzhou)
PRC	Fronteq (Changzhou) Machinery
PRC	Jiang:su Lie:one: Machinery
PRC	Hangcha Group
PRC	Shandong Chufeng Heavy Industry Machinery
PRC	Reeslift
PRC	Mantall Heavy Industry
PRC	Shandong Qiyun Group
PRC	Jinan Juxin Machinery
PRC	Shandong Yuntian Intelligent Machinery Equipment

The Commission has now accepted or ruled that the spike in imports were related to seasonal variations and not stockpiling. As a result, it had dropped plans to apply retroactive duties. An additional investigation prompted by the complainant into possible government subsidies of some of the larger companies is, however, ongoing. The tariffs are due to be applied from January 11th, 2025.

BOOM LIFT RECORD BREAKER

Zoomlion is planning to launch a new 265ft telescopic boom lift, the ZT82J, next year. A prototype of the new platform was displayed at Bauma China last month. It features a six section main boom topped by a 13.1 metre, three section articulating jib for a maximum working height of 82.3 metres. That compares with the five section boom and two section jib on its 215ft ZT68J.

The maximum outreach on the new machine is 34.1 metres with 230kg in the platform, other capacities include 300kg and 454kg. The overall operating width will be just over 5.5 metres. The new model has an overall stowed width of 2.8 metres, an overall length of 17.5 metres and an overall height of 3.33 metres. Total weight is 48.5 tonnes.

The new boom takes over as the world's largest from the 223ft XCMG XGS70K telescopic boom lift, several of which have already been delivered to customers in the UK and the Netherlands.

FIRST 70M MULTITEL HYBRID

Dutch crane and aerial lift rental company Boer has taken the first 70 metre Multitel MJ700 Hybrid truck mounted lift. Mounted on a five axle Volvo FM500 truck chassis, it has a maximum working height of 70.2 metres and up to 36 metres of outreach with 120kg in the platform or 28.5 metres with the maximum platform capacity of 600kg.

The new hybrid power pack includes two 80V/210Ah lithium batteries with a total of around 33KWh of power, driving an 80V/20KW electric motor, coupled to a hydraulic pump. The machine has enough battery power to fully extend and retract the boom at least four times. A full recharge takes four hours when connected to a 400V network or five hours with the on-board diesel generator. The unit can also be operated while plugged in or operate as a normal diesel machine.



The new Multitel MJ700

NEW GENIE SCISSORS

Genie is upgrading its 'core' slab scissor lift range with the aim of improving performance, while reducing the total cost of ownership. Dubbed the 'Next-Generation Genie' the models will include the 19ft GSTM-1932, 26ft GS-2632, 32ft GS-3232 - narrow models - plus the wider 26ft GS-2646, 32ft GS-3246 and 40ft GS-4046 scissor lifts.

The key specifications

The most noticeable change is a new curved scissor arm linkage design, which Genie says reduces machine weight. The new units are available in Europe now and will be launched in North America at the ARA Show at the end of January.



Model	Work Ht	O/A Width	Capacity
GS-1932	7.64m	810mm	227kg
GS-2632	9.85m	810mm	227kg
GS-3232	11.6m	810mm	227kg
GS-2646	9.85m	1.17m	454kg
GS-3246	11.6m	1.17m	318kg
GS-4046	13.91m	1.17m	318kg

TADANO ELECTRIC RT READY TO GO

Tadano's 90.7 tonne/100 ton all electric Evolt eGR-1000XLL-1 Rough Terrain crane is now in production with orders being taken for the North American version.

The crane has the same lifting capacities as the diesel powered GR-1000XLL-4 launched in 2020, but without the emissions. It is good for seven hours of lifting or five hours of lifting plus five and a half miles of jobsite travel on a single charge. For pure travel it has a 16 mile range at 11 miles an hour and includes regenerative braking. The crane can be recharged from a standard 480 Volt AC grid power, taking approximately five hours for a full charge, or two to three hours on a CCS1 charging system.

Features include a five section 51 metre main boom and 10.7 to 17.1 metre bi-fold swingaway extension with up to 45 degrees of offset. It also has a new 'Smart Counterweight' system providing two counterweight positions which boosts capacities by up to 20 percent when in the extended position. Maximum radius on the main boom is 47.2 metres.



The Evolt eGR-1000XLL-1

TADANO TO ACQUIRE IHI MATERIAL HANDLING CRANES

Tadano is to acquire IHI Transport Machinery Co, the crane and material handling division of IHI Corporation. Not to be confused with the IHI crawler crane and excavator business which was sold to Kato eight years ago.

Established in 1973 the Transport Machinery subsidiary's current product range includes a combination of port and yard handling cranes along with large climbing Luffing Jib Tower Cranes for high rise construction, plus Ship to Shore cranes, Large Offshore cranes, Wind Power cranes, Floating cranes and Bulk Handling Systems.

The division had sales last year of ¥73.4 billion (\$476.8 million) with an operating profit of ¥2.8 billion (\$18.1 million) and net assets of ¥19.1 billion (\$124 million).

NIFTY CLIPON FULLY AVAILABLE

Niftylift's ClipOn harness attachment sensor has now been rolled out across its range of HR self-propelled boom lifts. The ClipOn system activates when the key switch is turned on. If the operator has not attached their lanyard and attempts to move the machine, bright red LEDs above each anchor point illuminate and an alarm sounds. Once the harness is attached the LEDs turn green, and the alarm stops. The system also includes LEDs under the platform floor for those working below. It can also be retrofitted to older Niftylift platforms.



The harness must be correctly attached for the light to turn green

DIECI ADDS TO ELECTRIC RANGE

Italian telehandler manufacturer Dieci has unveiled two additions to its electric telescopic handler range - the Mini Agri-e Smart and Apollo-e Smart. The units have a maximum capacity of two tonnes, a 4.35 metre lift height, a maximum speed of 20kmh and a 3.1 tonne towing capacity. Overall weight is 4.4 tonnes.

Both are equipped with a 22kWh lithium battery and feature an adaptive load sensing system, low noise pumps and a seven inch display offering a 3D like view.



NEW MODELS ON SHOW IN SHANGHAI

Bauma China, held in Shanghai last month, included a number of new products, which we will cover in more detail over the coming months.

4,000 tonne AT - XCMG had the largest stand by far, with the 4,000 tonne 11 axle XCA4000 All Terrain crane launched earlier this year taking centre stage alongside a new 80 tonne AT. It also had several new aerial lifts on display.

Zoomlion regains biggest boom title - Zoomlion launched a 265ft telescopic boom lift, the ZT82J, with a maximum working height of 82.3 metres. The maximum outreach is 34.1 metres with 230kg in the platform, while the maximum platform capacity is 454kg.

Big XCMG spider - XCMG launched a 39 metre lithium battery powered telescopic spider lift - the XGS39X-Li - with 16.5 metres of outreach, a 2.4 metre platform with dual 120/230kg platform capacity and an overall weight of 8,700kg.

Big electric boom - XCMG also displayed a 165ft electric telescopic boom lift - the XGS52AXK-Li - with a 52 metre working height, 25 metres of outreach, dual 300/460kg platform capacity and overall weight of 26.1 tonnes.

12m mast booms - Two new 12 metre mast booms caught our attention... The 12.5 metre LGMG M1012JE with a five section box type mast, and three section telescopic jib, for a 5.3 metre outreach at a 6.6 metre up & over height and 200kg platform capacity. Overall width is 1.2 metres, overall length 3.7 metres and it weighs 4,900kg.

The XCMG XGR12J, with open mast design and telescopic jib, for a 12.7 metre working height, with 5.7 metres of outreach and 200kg platform capacity - total weight is 4,980kg.

Euro truck mounts - A number of European style truck mounted lifts included Sinoboom's 32 metre GKS32EL straight telescopic, with 4,495kg GVW, 14.8 metres of outreach, and 200kg platform capacity. At the heavier end XCMG had a 34 metre model, the GKS34, with a six section boom, 19 metres outreach and 7.2 tonne GVW.

See show review page 54



XCMG 4,000 tonne AT



Zoomlion ZT82J boom



XCMG XGS39X-Li

SINOBOOM'S NEW PRODUCTS

Sinoboom had a slew of new and upgraded products to launch at Bauma China, so decided to organise an international event at its plant in Changsha to overcome space issues at Bauma in Shanghai, and to show the huge extensions to its production facilities.

The product launches included:

A 16ft mast lift, the VM05EL, with 227kg platform capacity, 780mm overall width, 1.38 metre overall length and total weight of 970kg, including a roll out deck extension.

A 34ft Rough Terrain diesel boom lift, the AB10J, with piston pump hydraulics, a working height of 11.62 metres, 250kg platform capacity, 1.85 metre overall width and 4.95 tonne overall weight. 30 units have already been built, most of which are destined for Australia.

A 27ft 'No Oil' slab electric scissor lift, the 0808E ALL, with AC wheel motor drive, heavier duty lift mechanism and electric actuators for lift and steer.

A 27 metre spider lift, the SPA 27J, with 230kg platform capacity, a heavy duty four section lower boom, light weight three section top boom and articulated jib. It features 360 degree continuous slew, is 895mm wide with an overall length of 4.75 metres. Total weight is 3,800kg.

A 137ft battery powered telescopic boom lift, the TB42RJ Plus HD, with X-type chassis, four wheel drive and steer and rotating articulated jib which can be transported in a standard container. A 129ft version, the TB38RT Plus HD, is also available.

A six metre/2,500kg compact telehandler, the TH25-6, can take 2,000kg to its 5.8 metre lift height and manage 800kg at the maximum 3.36 metre forward reach. With the arrival of Ian Pratt from JCB, the prototype on show is likely to undergo substantial changes prior to launch next year.

Upgraded models include: Four articulated booms - the 50ft AB15J, 52ft AAB16EJ, 73ft AB22J Plus and 66ft AB26EJ Plus 25.6 metre work height, 19 metre outreach and rotating jib. Two upgraded slab electric micro scissor lifts, the 14ft 0407EN and 16ft 0607EN, with larger tyres and slightly wider scissor stack



Model of Sinoboom's production plant in Changsha



AB10J



The 27 metre SPA 27J



Compact telehandler

ALDERCOTE PLATFORMS FOR ELECTRIC VEHICLES

UK van mounted lift manufacturer Aldercote has introduced a line of aerial work platforms designed for mounting on all electric vehicles/chassis, initially developed for Norwegian distributor Liftco.

Designed without stabilisers, the load path is directed to reinforced points on the vehicle resulting in a lighter product. Mounted on a Ford Transit van it has a 13.8 metres working height, 8.4 metre outreach and platform capacity of 230kg.



**BIG
SALES**

ARTICULATING BOOM LIFT



MODELS	A09JE	A13JE	A14JE
WORKING HEIGHT MAX.	11m	15m	15.8m
PLATFORM CAPACITY	230kg	200kg	230kg

MODELS	AR18JE	AR20JE <small>AR20JE-HYBRID</small>	AR24JE
WORKING HEIGHT MAX.	20.12m	21.58m	26.6m
PLATFORM CAPACITY	UNRESTRICTED 260kg RESTRICTED 350kg	UNRESTRICTED 260kg RESTRICTED 350kg	UNRESTRICTED 250kg RESTRICTED 350kg

AR20JE is available in both battery model and hybrid model.



LINGONG HEAVY MACHINERY CO., LTD.

Address: No. 2676, Kejia Road, Jinan, Shandong, China
Email: sales@lmg.com.cn Tel: +86 531 6787 9283

LGMG Europe B.V.

Address: Donker Duyvisweg 301, 3316 BL Dordrecht, The Netherlands
Email: sales@lmg-europe.com Tel: +31 850 642 777

LGMG Machinery U.K. Ltd

Address: Unit 6 Spitfire Court, Triumph Business Park, Speke, Liverpool, L24 9GQ
Email: sales@lmg-europe.com Tel: +44(0)151 559 4506

www.lmg-lifts.com



RELIABILITY IN ACTION

NEW JCB TELEHANDLERS

JCB has upgraded two of its 360 degree telehandlers - the 21metre 555-210R and 26 metre 555-260R - which become the 5,5800kg/21m 558-210R Pro and 26m 558-260R Pro. While the lift heights are the same, they offer an extra 300kg lift capacity and include a higher basic specification and several new option packs.

The company also unveiled the battery powered TLT 30-22E HL 'Teletruck' industrial telehandler which can take its 3,000kg maximum capacity to a height of 4.4 metres. The battery pack provides up to eight hours of operation on a single charge.

Also announced is the 'Intellisense' human recognition system which detects pedestrians within a pre-set proximity of the machine, setting off audible and visual warnings both inside the cab and externally to warn those in the immediate vicinity. The system uses four AI cameras to cover the sides and rear of the machine along with a standard forward facing camera. The system will initially be available on the 540-140 and 535-125 telehandlers.

A JCB 558-260R Pro



JLG UPDATES G518A TELEHANDLER

JLG is to introduce a new 19ft (5.8m)/5,000lb(2,500kg) compact North American telehandler - the 519 - essentially an updated version of its 18ft/5.5 metre G518A launched in 2007.

The new unit has a 5.8 metre lift height, 3.3 metres of forward reach and a 2,495kg maximum lift capacity. It can handle just under two tonnes at its maximum lift height. The specifications are largely the same as its predecessor, the main differences being a little more lift height and a 270kg reduction in overall weight.

The telehandler is powered by a Deutz diesel and has a number of new features including a new control system with Load Stability Indication (LSI), Seatbelt Engagement warning and Operator Presence (SEAOP) sensing and diagnostics through ClearSky Smart Fleet.



**Schafften
Cranes**
Worldwide Bare Rental

Mastering gravity with SPMTs

We don't just deliver cranes to your doorstep, we also rent out self propelled modular transporters (SPMTs). Use of these compact platform trailers are highly versatile. They can be connected to one another resulting in an extremely high cumulative capacity while being controlled as a single vehicle with 360 degrees steering. Just like the cranes the SPMTs are available for bare rental. We master your gravity challenges.

schafftencranes.com

AGREEMENT ON SAFE ISOLATION OF PLATFORM CONTROLS

IPAF has issued a Position Statement regarding the isolation of platform controls following consultation with the IPAF's Manufacturers' Technical Committee and International Safety Committee, along with the UK Health and Safety Executive (HSE). This follows an incident in the UK in November 2022, when one of the levelling jacks on a large scissor lift leaked causing the lift to tilt, yet failing to activate its loss of jack pressure warning or sound the tilt alarm, because the operator had stopped the machine using the emergency stop button which cut off the electrics including the safety alerts.



The HSE launched an investigation into the incident and found that when at height, the method of isolating the upper controls can introduce a hazard to the occupants of the platform. The investigation is ongoing. The emergency stop control on aerial work platforms of all types has been traditionally used to cut the engine and isolate the controls when the platform has reached its work point. This practice has not been designed for current standards and modern machines that have all manner of safety systems that require power. The use of the emergency stop button is no longer appropriate as other methods are now used in control designs.

The operator of a work platform may be required to isolate the controls and/or power source using platform controls. Where the machine is equipped with an 'engine on/off' control on the platform control console, this should be used to switch the engine off during normal operation rather than the emergency stop control, unless the manufacturer indicates that it would be unsafe to do so. Where machines are not equipped with a dedicated 'on/off' control, the operator should follow the manufacturers' operating instructions.

If you have any questions or require further details, you can contact IPAF head of safety and technical, Brian Parker, on +44 (0)15395 66700.

RUTHMANN'S T1000 HF 'IN THE IRON'

After three years of development, Ruthmann has formally launched its new 100 metre truck mounted platform - the T1000 HF. The new model is essentially a stretched version of its 90 metre T900 with a maximum outreach of 39 metres. The launch signals Ruthmann's re-entry into the 100 metre market after a gap of more than 20 years. It hopes to sell at least 20 units by early 2026 and produce between 15 and 20 units of its 90 and 100 metre models a year.

The first T1000HF is destined for German rental company Gerken, the second, third and fourth will go to French rental company Joly Location, while further models have been ordered by Wörle in Germany and Galaksi Platform & Vinç in Turkey. For more information on the T1000 HF see the Truck mounted lift feature starting on page 27.

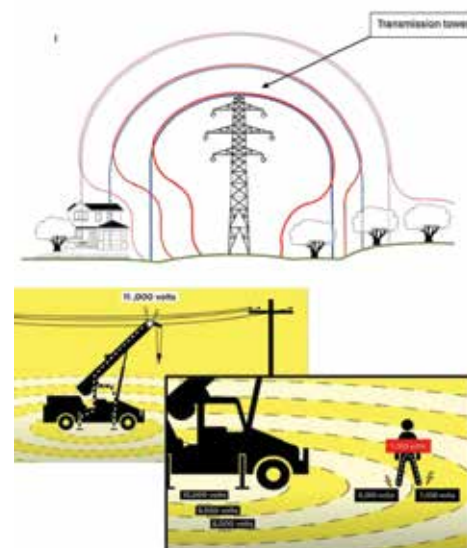


NEW GUIDANCE FOR WORKING NEAR POWER LINES

The International Crane Stakeholders Assembly (ICSA) - made up of the SC&RA in the USA, ESTA in Europe, CICA in Australia, CRAC in Canada's and JCA in Japan - has published new guidance on working with cranes near power lines, which could also be useful for aerial work platforms. It has been driven by growing concern over the number of fatal power line related incidents.

Entitled Safe Crane Operation in the Vicinity of Power Lines, the truly international document is highly detailed, informative and nicely illustrated. It provides guidance for operations in the vicinity of live low and high tension power lines and is also intended to assist local regulatory authorities evaluate requirements to prevent power line contact.

The guidance document can be download free of charge at <https://estaeurope.eu/docs/library/cranes/icsa-guidance-007/>



TRIAL END TO EMBARGO

In the UK the Staffordshire Police force has confirmed that will be removing embargo times on all Staffordshire's roads for Category A cranes.

This will initially be done for a three month trial period which began in November. Public complaints, incidents and traffic disruption will be monitored throughout the period. If there are no notable negative effects during the trial, Staffordshire Police will look to remove embargo times permanently for all Category A cranes.

**Abnormal Load
EMBARGO**

FINANCIALS ROUND-UP

Manitowoc - owner of Grove, Potain and National Crane - saw nine month revenues decline 3% to \$1.58 billion, while pre-tax profit plunged from \$46.1 million to just \$2.3 million. Order intake continued to keep pace with shipments at \$1.61 billion with the backlog/order book at the end of September up 10% to \$1.03 billion. Full year revenues are now predicted to be between \$2.17 and \$2.22 billion.

UK rental group **Vp** - owner of **UK Forks, MEP** and **Brandon Hire Station** - has reported first half revenues one percent higher at £192.5 million. UK revenues and operating profit were slightly lower, while international revenues increased 17% and profit up 5%. Pre-tax profit for the group was £19.5 million, down 2% on last year.



Mastclimber, hoist and façade access company **Alimak** has reported a flat year to date. Revenues for the nine months to the end of September were SK5.28 billion (\$494 million), while pre-tax profit increased almost 6% to SK563 (\$52.7 million). Third quarter sales jumped 58% to SK1.7 billion (\$156.1 million) while pre-tax profits increased 93% to SK189 million (\$17 million).



Tadano is to acquire **IHI Transport Machinery Co**, the port and tower crane manufacturer and material handling subsidiary of IHI Corporation - not to be confused with the IHI crawler crane and excavator business which was sold to Kato eight years ago.



Hiab owner **Cargotec** has sold the **MacGregor** crane and marine hatch manufacturing business to funds managed by Triton Partners for €480 million. The deal should complete by April next year. Last year MacGregor had revenues of €733 million with an operating profit of €33 million.



JLG revenues for the nine months to the end of September improved four percent to \$4 billion. Aerial work platform sales were flat, but telehandler sales increased 11% to \$1.25 billion. Operating profit was almost 15% higher at \$662.5 million compared to the same period last year. The company is forecasting full year revenues of \$5.1 billion, a 2% increase on 2023.



Genie/Terex AWP saw revenues improve 9.5% to \$2.42 billion for the nine months to the end of September. Operating profit was almost five percent higher at \$324 million. The Crane division figures are now lost in the Material Processing business.



Terex group revenues slipped just over 1% for the nine months to \$3.89 billion, while pre-tax profits slumped 13.5% to \$410 million. Terex is forecasting full year group revenues of \$5.15 billion, with Genie/AWP making up \$3 billion of this, around 3% higher than 2023.

US based access solutions company **Canopy Brands** has acquired the rack and pinion and suspended platform divisions of **Alba-Macrel**. Alba is based in Spain's Basque region and manufactures material and personnel hoists, transport platforms, mastclimbers, construction elevators and modular suspended platforms with sales in 77 countries. Bee Access - a Canopy group company - will continue to distribute Alba products in the USA, while Alba will continue to operate from its plant in Miranda de Ebro, Spain.



US rental company **Herc Rentals** has reported a 7% increase in revenues for the nine months to the end of September to \$2.62 billion. During the period the company completed eight acquisitions with a total of 26 locations and opened 16 new greenfield locations. Pre-tax profit for the period improved 3% to \$334 million. Capital expenditure over the nine months was \$753 million almost 31% lower than at the same point in 2023.



Palfinger saw revenues for the nine months to the end of September decline 3% to €1.75 billion. Order intake was 27% lower at €972 million, its lowest level since 2021 with both of its major markets - Europe and North America - slower. Pre-tax profit slipped 11% to €124.9 million. Palfinger is forecasting full year revenues of around €2.3 billion which is 5% lower than for 2023, with pre-tax and interest profit in the region of €189 million.



Cargotec's third quarter results showed lower revenues for **Hiab** compensated by higher sales at **MacGregor**. Hiab revenues were €1.23 billion an 8% reduction on the same period in 2023. Order intake however improved 3% to €1.1

billion, although the order book was 20% smaller at €636 million. Operating profit for the period fell 4% to €196.8 million. **Cargotec** revenues were flat at €1.83 billion, while pre-tax profit edged up very slightly to €183.9 million.



Nine month revenues at **Manitou** declined 3% to €2.0 billion, with third quarter sales down 10% to €593 million. Order intake for new equipment improved 17% to €252 million. The company is now forecasting full year revenues of around €2.67 billion, a 7% fall on 2023.



US rental company **United Rentals** posted another record quarter with nine month revenues up 6% to \$11.25 billion. Pre-tax profits improved almost 6.5% to \$2.48 billion. Third quarter revenues were 6% higher at \$3.99 billion, with pre-tax profits up 1% at \$943 million. United is forecasting record full year revenues of \$15.10 to \$15.30 billion.



UK rental company **Elev8 Access Platforms** has entered into insolvency protection/administration following a tough period of trading.



Haulotte has reported an 11% decline in revenues to €509 million for the nine months to the end of September. New equipment sales declined 12% to €437 million. Rental revenues fell a further 7% to €16 million although parts and service revenues increased 5% to €56 million. Haulotte is forecasting a 10% drop in full year revenues for 2024.



New owner for Aichi Europe

Yama Saha, the owner manager of German aerial lift distributor Sahalift, has acquired Aichi's long-term European importer and product support businesses, Netherlands based Aichi Sales Office B.V. and ASO Parts B.V. in an all-share purchase deal. A formal distribution agreement has now been signed following an agreement reached in February. The new partnership will launch a wider range of Aichi platforms in Europe, including the new 68ft SR21CJM crawler boom lift, at Bauma next April.



NEW TILT AND TURN FORKS FOR MAGNI

Magni Telehandlers has launched a new five tonne rotating and tilting FEM/ISO standard compatible fork carriage, designed specifically for handling bulky materials in tight spaces. The forks rotate a full 360 degrees at a height of up to three metres, above this height an automatic restriction limits fork rotation to 90 degrees either side of centre in order to prevent the load fouling the boom. In addition to the rotation, the carriage can tilt by up to 70 degrees to keep the load stable making it easier to load or unload materials.

The forks are compatible with all Magni TH fixed frame and RTH 360 degree models. Maximum capacity over the front is 2,300kg on the more compact TH models and up to 5,000kg on the RTH models. The capacity with the forks rotated 90 degrees is 2,500kg on all compatible models.



The forks can rotate 360 degrees at lower boom angles

Tim Whiteman of Sinoboom (L) hands over the new machine to Dennis Schröder of Hässler Lift



FIRST 153FT SINOBOOM FOR EUROPE

Chinese manufacturer Sinoboom has shipped the first CE version of its 153ft AB46RJ articulated boom lift to German rental company Hässler Lift. The AB46RJ features a three section telescopic riser, three section top boom, plus an articulating jib with up to 150 degrees of rotation. Maximum working height is 48.6 metres and the maximum outreach 25.5 metres with the unrestricted platform capacity of 275kg or just under 24 metres with the maximum capacity of 455kg - both at an up & over reach of around 19 metres.

The company introduced the AB46 in 2019, delivered the first five domestically and began shipping overseas last year. The CE model includes a Stage V diesel and a number of other refinements and improvements including the use of a heavy duty composite material for the superstructure covers/shrouds in place of steel. The company has also delivered the first unit to Australia and received a mega order for the Middle East, with the 30th unit likely to come off the production line by the end of the year.



SIMPLY ELECTRIC,
SIMPLY MORE

THE NEW RANGE OF BATTERY-POWERED,
ELECTRIC ROUGH TERRAIN ARTICULATED BOOMS
REMAINS SIMPLE AND RELIABLE, WHILE OFFERING AN
ENVIRONMENTALLY FRIENDLY AND SUSTAINABLE CHOICE
FOR RENTAL.



www.skyjack.com

SKYJACK
simply reliable

Comprehensive Upgrade Fourteen Benefits

PERFORMANCE+



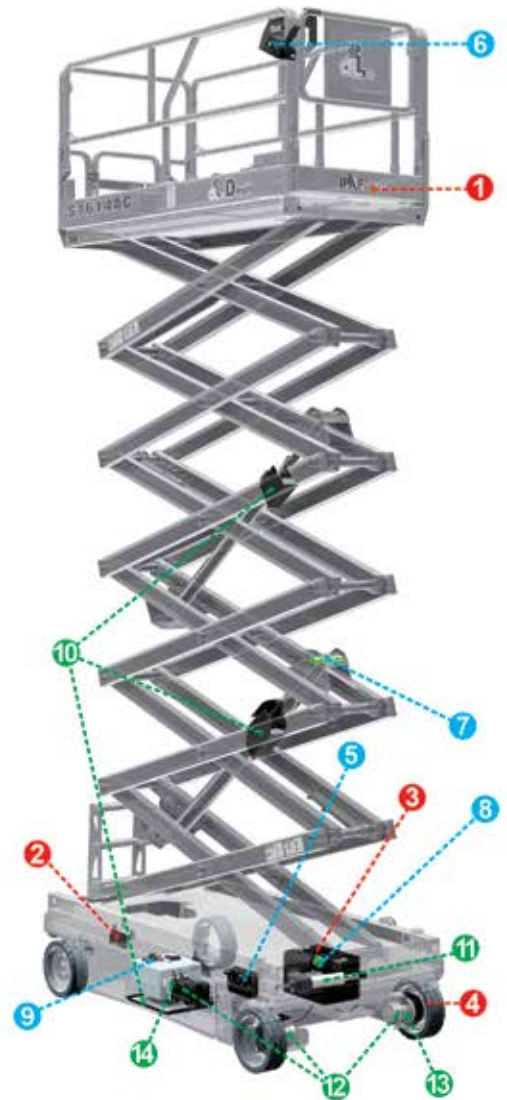
- 1 **Industry Leading Platform Capacity**
Maximum increase up to 45% compared to the original model
- 2 **Side and Rear Forklift Pockets**
Multiple choices for transport efficiency
- 3 **Lithium-Ion Battery with Long Duty Cycle and Fast Recharging**
High-density battery pack with five-year warranty
- 4 **High Strength Wear Resistant Tyres Compound**
Double the life compared to conventional tyres

RELIABILITY+

- 5 **Integrated Four-in-One Motor Controller**
40% reduction in connections and harnesses
- 6 **New Platform Control Box**
The durability of the touch pad is greatly improved, the new surface cleans easily, and the display is three times larger
- 7 **Reliable Load Sensing System**
Less affected by temperature and friction
- 8 **Scissor Angle Sensor Reliability Improvement**
Limit switches are reduced by 60%
- 9 **Hydraulic Oil Heater (Optional)**
Applicable for cold environment

ENVIRONMENT+

- 10 **Hydraulic Oil Leak Containment**
For applications with zero leak tolerance
- 11 **Electric Actuator Steering System**
No hydraulic oil, faster steering speed and 66% reduction in energy consumption
- 12 **Gravity Down Energy Recovery System**
Battery charge regeneration during platform descent
- 13 **Highest Efficiency Electric Drive System**
15% decrease in energy consumption and higher power density
- 14 **Highest Efficiency Electric Lift Pump System**
20% decrease in energy consumption and higher power density



AC+

Working Height	8m	8m	10m	10m	12m	14m	16m	16m
Overall Width	0.7m	0.8m	0.8m	1.2m	1.2m	1.2m	1.2m	1.4m

AC+ Series Scissor Aerial Work Platform

ZHEJIANG DINGLI MACHINERY CO.,LTD.
 ADD:188 Qihang Road, Leidian Town, Deqing, Zhejiang, P.R.C
 TEL:+86-572-8681688
 Phone:+86-13806523131 Susan Huang
 E-Mail:export@cndingli.com
 Https://en.cndingli.com



NEWS HIGHLIGHTS

- US **Select Crane Sales** has appointed **Bruce Alvis** as Mid-Atlantic territory manager
- UK based **Collet & Sons** has opened a new office in **Bradford**
- UK's **Ardent** is to invest £50 million in new telehandlers
- Germany's **Auto Kurz** has taken a 70t **Liebherr LTM 1070-4.2**
- UK's **NMT** has taken a 300t **Liebherr LTM 1300-6.2**
- Turkey's **Kambeton** has taken a 120t **Grove GMK5120L**
- UK's **Ainscough** has spent £40 million on 14 big **Liebherr ATs**
- China's **LGMG** has appointed **Omar Kaïma** as sales manager France
- Spain's **Aguado** has taken a 700t **Liebherr LR 1700-1.0W** narrow track crawler
- Ireland's **Global Hire** has taken 69 **Sunward** scissor lifts
- UK based **Lester Cladding** has taken a **Liebherr MK 140-5.1**
- Germany's **Schwarze ASC** has taken the first 15t **Jekko JF545.2**
- **Potain** has appointed **NFT Hong Kong** as distributor
- UK's **KC Machine Movers** has taken a 2.5t **Valla 25E** pick & carry crane
- **Yama Saha** of **Sahalift** has acquired Aichi importer **Aichi Sales Office** and **ASO Parts**
- UK's **Cadman cranes** has taken a 230t **Liebherr LTM 1230-5.1**
- Dubai's **Johnson Arabia** has taken a large number of **Sinoboom** booms
- **Terex** has appointed **Jennifer Kong-Picarello** as chief financial officer
- Germany's **Schwerlast Weise** has taken a 300t **Liebherr LTM 1300-6.3**
- Denmark's **Danfoss** has launched new self-guidance software
- **Manitowoc Philippines** has relocated to **Muntinlupa**, south Manila
- UK's **Falcon Cranes** has been acquitted of charges for a fatal tower crane incident in Crewe in 2017
- **MGX** has opened a new facility in **Geismar**, Baton Rouge, Louisiana
- **Socage** has opened a US distribution company - **Socage North America**
- UK's **Select Plant Hire** has taken two 150t **Liebherr LTR 1150s**
- **Sinoboom** has appointed **Tim Barnett** as product manager telehandlers
- Italy's **Baldini** has taken a 110t **Liebherr LTM 1110-5.2**
- **Cargotec** has sold **MacGregor** to **Triton Partners**
- Mexico's **Eseasa** has taken the first 700t **Liebherr LR 1700-1.0W** in S. America
- Germany's **Jakob Schäfer** has taken a 21.5m **GSR B220PXE** truck mount



Bruce Alvis



Omar Kaïma



Jennifer Kong-Picarello



Tim Barnett

- Jersey's **4 Hire** has taken a 24m **Socage 24D** Speed truck mount
- **Merlo UK** has appointed **Blue Central** as a dealer
- Italy's **Nuova Age** has taken a **Raimondi T97** tower crane
- **JLG** has appointed **Rogério dos Santos** as VP Europe, ME, Africa & India replacing **Karel Huijser**
- France's **Labrosse Material Solution BTP** has taken its first **CTE Zeta 22**
- **Jekko** has appointed **AP Rentals** as distributor for Hong Kong, Macau and Singapore
- Germany's **MSG Krandienst** has taken a 300t **Liebherr LTM 1300-6.3**
- **Magni Deutschland** has appointed **Dennis Tyler** and **Thomas Bennemann** to product support roles
- Switzerland's **Richi** has taken a 350t **Liebherr LTM 1350-6.1**
- **XCMG** has launched training courses in **Indonesia**
- UK's **Lawson Haulage** has taken a 60t **Liebherr LTM 1060-3.1**
- Spain's **Grúas Pirineos** has taken a 700t **Liebherr LTM 1650-8.1**
- **Florian Büscher** has returned to **Teupen** as sales & marketing director, Europe
- Germany's **Treelancer** has taken a 30m **CMC S30** spider lift
- **Al Jaber Heavy Lift & Transport** has added **Modulift** spreader beams
- Denmark's **Trackunit** has launched 'Specialty Equipment Solution'
- Trailer manufacturer **Faymonville** is to open its first plant in America
- Isle of Man's **Mann Crane Hire** has taken a 60t **Grove GMK3060L-1**
- Austria's **Felbermayr** has taken two 36m **Ruthmann T360** truck mounts
- **Tadano** is to acquire **IHI Transport Machinery**
- Germany's **Häbler-Lift** has taken 70 **Sinoboom** platforms and the first 153ft **AB46RJ** in Europe
- **Terex Tower Cranes** has appointed **Mevi** as dealer for Lombardy, Piedmont, Liguria, Tuscany and Emilia Romagna
- Italy's **Baschieri Noleggio** and **De Angelis Noleggi** have purchased multiple **Multitel** platforms
- France's **Mordefroy Levage** has taken a 180ft **Genie SX-180** boom
- Veteran crane salesman **Dick Lloyd** has died
- Taiwan's **Chi Deh Crane Engineering** has taken a 104m **Bronto S104HLA**
- Wales' **Davies Crane Hire** has taken a 700t **Liebherr LTM 1650-8.1**
- **Grove** has appointed **Sia Good Work** as repair agent for the Baltic states
- **Niftylift's** apprentice team, **Elevate Elite**, won the IMechE Apprentice Automation Challenge
- **Raimondi** has delivered two T147 tower cranes to France's **GP Mat International**



Rogério dos Santos



Dennis Tyler



Thomas Bennemann



Florian Büscher



Dick Lloyd

- **John Hewitt**, the founder of **J. Hewitt Crane Hire** in Middlesbrough, UK, has died
- Italy's **Flash Battery** has opened a subsidiary in **Texas**
- **British Airways** has taken four 24m **CTE MP 24 C** truck mounted lifts
- Kuwait's **La'ala Al Kuwait Real Estate** has taken six **Tadano GR RT** cranes
- Italy's **Palazzani** is adding its **Lifting Kit** platform to all but its smallest models
- **Magni Telehandlers** has launched a 5,000kg rotating/tilting fork carriage
- Germany's **Möller manlift** has purchased five 30m **Palfinger** truck mounts
- China's **LGMG** has appointed **Paul Cooper** as UK sales manager
- Finland's **Leguan Lifts** has appointed **Spider Lift Asia** as Singapore dealer
- Belgium's **ICO** has taken its second 154t **Liebherr LHM 550** mobile harbour crane
- **Terex RT Cranes** has appointed **AMA Industria** as distributor for Angola
- **Müller Weser** has taken the first 208t **Liebherr LPS 600** rail mounted crane in Germany
- Dutch company **Kraanverhuur Tholen** has taken the first 80t **Grove GMK4080L**
- India's **Mtandt** is to take over **Comansa** tower crane distribution in India, Nepal and Bhutan
- **ML Crane** group businesses - Crane Service Inc, ML Crane and Winslow Crane Service - have merged
- **Palfinger UK** is to open a service centre in London near the M25
- China's **XCMG** has appointed **Thomas Gack** as AWP sales manager in Germany
- Anglo Irish **WH Scott & Son Engineers** has acquired UK based **RHC Lifting**
- UK based **Mac's Truck Sales** has moved its rental division to Outlane, Huddersfield
- Italy's **Autovictor** has taken a 650t **Tadano CC 38.650-1**, a 130t **AC 5.130-1** and an 80t **AC 4.080-1**
- **Boels** has taken 24 more **Easy Lift** spider lifts
- **US Bennett On Site Services** has opened a location in Dayton, **Texas**
- Australia's **EQSS** is to open its first international operation in the UK
- UK's **Marsden Crane Hire** has taken 40t and 60t **Liebherr LTM**s
- **Stafford Tower Cranes** is manufacturing its own crane cabs
- **Manitex Valla** has appointed **Gianluigi Salvini** as technical manager
- **XCMG** has terminated its UK distribution agreement with **Genesis**
- **Jekko** has introduced a Li-on version of its 6.15t **JF235** spider crane



John Hewitt



Paul Cooper



Thomas Gack



Gianluigi Salvini

See www.Vertikal.net news archive for full versions of all these stories