

UNITED TO ACQUIRE H&E

US based United Rentals is to acquire H&E Equipment Services in a cash deal for \$92 a share, equating to a total value of approximately \$4.8 billion, including around \$1.4 billion of net debt. The tender offer for all of the outstanding shares in H&E is expected to close within the next few months. H&E has the right to pull out of the deal if it receives a better offer than United's.

H&E's 12 month revenues to the end of September were \$1.52 billion with an EBITDA of \$696 million. Its rental fleet includes aerial work platforms, telehandlers and earthmoving equipment, along with general and speciality products, available from 160 locations across 30 states with around 2,900 employees. The deal will take United's rental fleet to 64,000 units with an average age of 41 months.



BIGGER FLAT TOP FROM WOLFFKRAN

Wolffkran has launched a new 560 tonne/metre class flat top tower crane, the Wolff 8038 Clear, its largest flat top to date. The new crane has a maximum capacity of 20 tonnes at up to 33.4 metres radius, while the 80 metre jib has a tip capacity of 3.8 tonnes. An extension takes it to 85 metres on which the capacity is 2.1 tonnes at maximum radius.

The crane is equipped with a 2.3 metre tower connection, but it can also be mounted on a 2.0 metre tower to fit into elevator shafts. It has also been designed for easy transportation and installation, with the heaviest single component weighing 15 tonnes. According to the company it can be moved on six trucks.

To ease installation the crane is equipped with a patented smart jib design, in which the top chord can be assembled with a simple plug connection without the need for a hammer and provides a smoother transition between sections. It also features 'bolt depots' at all points where the crane components need to be installed overhead making it easier on the installation crew. As a pure two fall crane, the 8038 Clear can be ordered with either a 75 kW or 110 kW winch with speeds of up to 132 or 190 metres a minute respectively. This can be reduced by up to 50 percent where full capacity is not required, reducing power consumption.



JEKKO LAUNCHES ELECTRIC JF235

Jekko has introduced an electric version of its 6.15 tonne JF235 articulated spider crane that it launched a year ago. The model has the same features and lifting performance as the diesel JF235 with a five section boom for a maximum tip height of just over 15 metres, at which point it can handle 5.4 tonnes.

The new electric crane features a 48V/67kWh lithium-ion battery pack with an integrated Battery Monitoring System. The battery provides enough power for the 12kW motor pump to operate for 10 working hours on a 35 percent duty cycle. It can be recharged with both single phase (230V) or three phase (400V) chargers in 6.5 hours and can continue to operate at full power while recharging.



FALCON FILES FOR BANKRUPTCY PROTECTION

In December Danish spider lift manufacturer Falcon Lifts filed for protection from its creditors, having struggled to service its debt load.



The company - which began as Falck Schmidt - has gone through a number of owners and name changes since it was acquired in 2005 from the founding family by VT Holding, including Skako Lift and World Lift before a Management Buy Out in 2011 when it became TCA Lift. The MBO team rebranded as Falcon Lifts in 2018. In 2022 the company signed an OEM supply deal with Chinese manufacturer Sinoboom, which may have added more pressure in terms of cash flow.

TADANO INTRODUCES SIX CE CRAWLER BOOM LIFTS

Japanese crane and access manufacturer Tadano has announced a range of six crawler mounted boom lifts with working heights between 8.8 and 20 metres. The move follows the acquisition of Nagano just over a year ago. More on these in the next issue.

See Vertikal.net for full report



LGMG'S ELECTRIC TELEHANDLER

LGMG has released details of the production version of its new battery electric telehandlers displayed at Bauma China last month. The six metre/2,500kg H625E is the company's first electric telehandler, and takes two tonnes to its maximum lift height of 5.94 metres, or handle 800kg at its 3.41 metres maximum forward reach. The 2,500kg capacity is available at a five metre lift height, or 1.3 metres forward reach. The unit has an overall length of 3.99 metres, an overall width of 1.86 metres and stowed height of just under two metres. Overall weight is just under five tonnes.

Four wheel drive and steer are standard with a maximum road speed of 10mph/16kph. Power comes from a quick change 80V/340Ah Lithium-Ion battery pack, feeding an electric motor for the drive and one for the hydraulic pump.

Attachments include work platforms, buckets, jib hooks and rotating fork carriages with standard couplings.

The alternatives

Faresin and JCB have made most of the running in this market so far, joined by Manitou, with new models recently added by Dieci and Magni. Merlo has a slightly smaller but well developed model in the form of the E Worker, which we have included. Sinoboom displayed a prototype at its plant in Changsha.

So how does it stack up?

| Make | LGMG | Faresin | JCB | Manitou | Dieci | Magni | Merlo |
|--------------------------|-----------|-----------|-----------|------------|-----------|---------|-----------|
| Model | H625E | 6.26e | 525-60E | MT 625E | 26.6E | TH3.6 | EW25.5-90 |
| Max lift height | 5.94m | 5.9m | 6.0m | 5.85m | 5.73m | 5.8m | 4.8m |
| Capacity at max lift ht. | 2,000kg | 2,000kg | 2,000kg | 2,000kg | 2,000kg | 2,500kg | 1,500kg |
| Max forward reach | 3.41m | 3.2m | 3.5m | 3.4m | 3.2m | 3.2m | 2.6m |
| Capacity at max reach | 800kg | 900kg | 720kg | 800kg | 900kg | 1,100kg | 900kg |
| Max capacity | 2,500kg | 2,600kg | 2,500kg | 2,500kg | 2,600kg | 3,000kg | 2,500kg |
| O/A width | 1.86m | 1.89m | 1.84m | 1.81m | 1.86m | 1.81m | 1.54m |
| O/A height | 1.97m | 1.94m | 1.89m | 1.92m | 1.98m | 1.94m | 1.97m |
| O/A length - w/o forks | 3.99m | 4.03m | 4.0m | 3.9m | 4.1m | 3.79m | 3.32m |
| O/A weight | 4,950kg | 4,800kg | 5,145kg | 4,800kg | 5,100kg | 4,850kg | 4,950kg |
| Cab width | 810mm | 960mm | 880mm | 790mm | 860mm | 820mm | 770mm |
| Battery type | Lithium i | Lithium i | Lithium i | Lithium i | Lithium i | Diesel | Lead Acid |
| Battery Voltage/Ah | 80v/340Ah | 80v/560Ah | 96v/250Ah | 100v/246Ah | 90v/230Ah | N/D | 48v.960Ah |
| Drive/steer | 4x4x4 | 4x4x4 | 4x4x4 | 4x4x4 | 4x4x4 | 4x4x4 | 4x4x2 |
| Max Speed | 16kph | 12kph | 15kph | 16kph | 24kph | 35kph | 25kph |



XCMG'S 80T EURO AT

Chinese construction equipment manufacturer XCMG has unveiled a new 80 tonne four axle All Terrain crane for the European market - the XCA80G7-1E. Several units have already been sold in the Netherlands. The new crane not only looks good but has a top level specification to go with it. Key features include a seven section 60 metre main boom, topped by a 9.5 to 16 metre bi-fold swingaway with up to 40 degrees of offset. The maximum tip height is just under 80 metres, as good if not better than any in this class.

The carrier is all wheel steer with the first, third and fourth axles driven, powered by a six cylinder Mercedes Stage V diesel driving a ZF transmission with built-in retarder, Kessler transfer box and axles and classic hydro pneumatic suspension. The outriggers have three operating positions, fully in, half way out with a 4.5 metres spread, and fully out at 6.5 metres. Controls are on both sides of the carrier, while a standard wireless remote is included.

The superstructure cab has 20 degrees of tilt and a large glazed area, while



the maximum counterweight is 20 tonnes. The crane can travel with either nine tonnes of counterweight and hook blocks within 12 tonne axle loads, or seven tonnes plus the bi-fold extension and block. Axle loads with all 20 tonnes of counterweight on board are 15.5 tonnes.

We understand that the first two XCMG units will go to Rotterdam based Wiltrade Holland, owned by the Van de Wetering family, and Lodi Rental, part of the van Adrighem Group, on the south west side of Rotterdam.

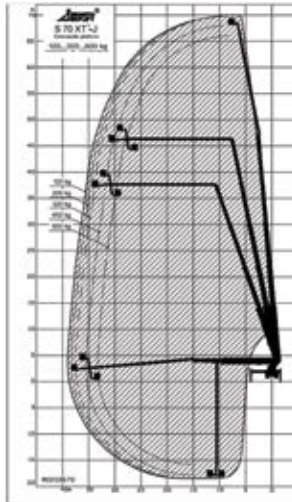
| Make | XCMG | Grove | Tadano | Liebherr | Liebherr |
|-----------------------|------------|----------|-----------|-------------|-------------|
| Model | XCA80G7-1E | GMK4080L | AC4.080-1 | LTM1070-4.2 | LTM1090-4.2 |
| Max capacity | 80t | 80t | 80t | 70t | 90t |
| Main boom | 60m | 60m | 60m | 50m | 60m |
| S/A Extensions | 9.5-16m | 8.7-15m | 8.5-16m | 9.5-16m | 9.5-16m |
| Max tip height | 79.8m | 78m | 78.5m | 69m | 79.8m |
| Capacity @ 10m radius | 19.3m | 18.7t | 22t | 18.2t | 24.7t |
| Capacity on full boom | 5.4t | 4.8t | 5.4t | 6.7t | 4.1t |
| Max Counterweight | 20t | 19.1t | 17.7t | 14.5t | 22.5t |
| OA Length | 12.85m | 12.43m | 12.45m | 12.51m | 13.39m |
| OA Width | 2.55m | 2.55m | 2.55m | 2.55m | 2.55m |
| OA height | 3.89m | 3.68m | 3.9m | 3.95m | 3.9m |
| Drive/Steer | 8x6x8 | 8x4x8 | 8x4x8 | 8x4x8 | 8x6x8 |



BRONTO'S NEXT XT GENERATION

Bronto Skylift will unveil a new range of truck mounted lifts - the XT Generation - at Bauma in April. The first model will be the 70 metre S70XT1-J which will feature a new boom design the company says adds significantly to its rigidity while improving performance. The new platform features a five section main boom, topped by a three section upper boom/jib with Bronto's articulating jib, providing a realistic maximum outreach of 39 metres with 120kg in the platform and 33.2 metres with the maximum platform capacity of 600kg. Maximum up & over clearance is 46 metres with an outreach of around 32 metres. Below ground reach is almost 18 metres at an outreach of around 15 metres.

The articulating jib has around 175 degrees while platform rotation is 440 degrees - 220 degrees in either direction. The platform overload system is both more accurate and robust, new outrigger sensors are integrated into hydraulic jack cylinders while other sensors have been re-located for added reliability. A new modular 1.1 by 2.4 to 3.7 metre extending platform design offers a range of entry points and guard rail configurations. It is also designed to be easy to repair and can be configured in five different formats. The well proven Bronto+ control system is retained, providing smooth and reliable function controls. Deliveries of the 70 metre lift will begin early next year starting with the CE model in Europe.



HONG KONG MANDATES SECONDARY GUARDING

Hong Kong has mandated that all aerial work platforms working on public works construction sites in the state must be fitted with a form of secondary guarding. The mandate follows several incidents, including several at the end of November including when a 57 year old painter was trapped between the platform controls and an overhead beam while using a spider lift.

The order dated November 29th has already come into force on tenders for all new projects, while safety officers on previously approved projects have been told that they should incorporate the requirement as an amendment to the contract. Those working on live construction or maintenance projects were also instructed to ask that devices be retrofitted to any machines not already equipped with a secondary guarding device by the end of December, 2024.

To download the whole document including Annex A - with the 'Particular Specification' go to [https://www.devb.gov.hk/filemanager/en/content_191/Covering%20memo%20\(web.pdf\)](https://www.devb.gov.hk/filemanager/en/content_191/Covering%20memo%20(web.pdf))

You can also find the document in the Safety Bulletin section of the Vertikal.net online Library.



SINOBOOM LAUNCHES 'TANK TURN'

Chinese manufacturer Sinoboom has launched a new steering option for its boom lifts, dubbed the 'Tank Turn'. Essentially it is a form of skid steer, and when used with the lift's regular two wheel steering system allows a machine to turn on the spot.

Introduced on its 53ft AB16EJ Plus electric articulated boom lift, the system operates at a flick of a switch, converting the machine from standard two wheel steer to 'Tank Turn'. Four independently controlled direct electric wheel drive motors counter rotate, allowing the lift to perform tighter turns than a four wheel steer model.

FIRST MEXICAN LGMG TELEHANDLER

The first production telehandler to be built at LGMG's Mexican plant in Marin, Nuevo León has been shipped. The machine, an H1056 American style telehandler, has a 17.1 metre maximum lift height, 4.5 tonne maximum capacity and 12.8 metre forward reach.

The long wheelbase, wide chassis model features an open cab and typical American market basic specification. Two more models are planned over the next year or so, including the 5,400kg/17m H1256 and compact 2,500kg/6m H5519.



A STRONGER FASSI

Fassi has announced its 'most powerful articulated crane to date' - the F2350RL-HXP Techno. The company says that it is the first with 18 hydraulic extensions - 10 in the 11 section boom and eight in the nine section L958L luffing jib - providing a maximum tip height of 56 metres, where the capacity is 200kg at a radius of eight metres or 340kg at the maximum radius of 47.35 metres with the boom and jib horizontal. The jib can also be luffed to 10 degrees above the horizontal boom.



Maximum capacity is 30 tonnes at a 4.5 metre radius, and buyers can choose between two main booms, the F2350RL.2.8-HXP with eight hydraulic sections or the F2350RL.2.10-HXP with 10 hydraulic sections. The boom features a new 10 sided 'X-Design' decagonal profile incorporating the FX990 electronic system.

The new crane is designed for 40 tonne or larger GVW trucks and takes up less than nine metres of bed length with a choice of three bases - the SB, MB and LB - allowing the crane to be adapted to fit a wide range of chassis. It has six stabilisers including two mounted at the rear which can be extended for additional stability.

The XF hydraulic system is said to offer smoother, more precise operation, as well as speed thanks to a new Danfoss valve block, which also reduces the chance of hydraulic oil overheating. The winch is fitted under the outer base boom and features 120 metres of wire rope for multiple falls where required. Radio remote controls are standard.



LIEBHERR UPGRADES TO LTM 1120-4.2

Liebherr has announced an upgrade to its 120 tonne LTM 1120-4.1 All Terrain crane to the LTM 1120-4.2 featuring the Liccon3 control system. The new model will be officially launched at Bauma in Munich this April.

The new four axle crane retains the same seven section 66 metre main boom, 10.8 to 19 metre bi-fold swingaway extension, VarioBase variable outrigger set up and VarioBallast adjustable counterweight, to give the same performance and capacities as its predecessor. However, the LTM 1120-4.2 incorporates several enhancements, including improved driver assistance systems, a TraXon DynamicPerform clutch system for smoother starts and a new carrier cab.

The Liccon3 control system offers faster data processing and expanded memory, complemented by a new touchscreen display with fully integrated telematics and fleet management features. Additional enhancements include a central lubrication system and a digital tyre pressure monitor.



MULTITEL PAGLIERO TELEMATICS UPDATE

Multitel Pagliero has upgraded its telematics suite with a new dashboard feature providing a real time visualisation of the work platform. The update allows owners to monitor key machine data, including outrigger configuration, boom and riser angles and the weight in the platform in real time. It also offers detailed reports, alarms, and hours worked and when.

The subscription based system - compatible with all Multitel models - connects customers to individual machines or entire fleets via smartphone, tablet, or PC. Available at the time of purchase or later retrofit, the system supports remote monitoring, diagnostics and maintenance planning, aiming to reduce downtime and operational costs.

THE MOST DANGEROUS TIME OF THE YEAR

The lead up to Christmas and year-end holidays is statistically one of the most dangerous periods of the year on construction sites. CICA - the Crane industry

Council of Australia - has published a bulletin highlighting causes behind such accident spikes such as 'Deadline Craziiness', 'Holiday Brain', Tiredness and End of Year Fatigue, with suggestions on how to avoid them.

To subscribe to the bulletins email michelle@cica.com.au with the message: Hi Michelle, Please add me to the CICA Safety Bulletin Subscriber list.



NEW PALFINGER REMOTE CONTROLLER

Austrian crane and aerial lift manufacturer Palfinger has launched a new radio remote controller for its TEC ('Technology') loader cranes. Created in collaboration with Scanreco the new P6 controller completes the 11 model TEC range.

The P6 includes a 3.5 inch colour display, a redesigned linear lever and joysticks with an integrated acceleration sensor that automatically stops crane operation if a fall is detected. It is available in 10 console variants, allowing customisation to meet specific application needs. Battery life is more than 20 hours, while a second battery can be fitted for an additional 20 hours of continuous operation.



Palfinger's new P6 controller

NIFTYLIFT'S SCHOOL CHALLENGE

Niftylift has launched its 2024-25 RC Nifty Challenge, a 'STEM' design competition involving students from eight local schools aimed at fostering interest the Science, Technology, Engineering and Mathematics subjects. The challenge aims to inspire the next generation of engineers while showcasing potential career paths in the powered access market.

The launch event at Nifty's Milton Keynes headquarters introduced students to the competition's structure, timeline and rules. Activities also included a factory tour, guidance on using the RC Nifty website portal, and careers talks highlighting opportunities in engineering and the company's apprenticeship programme. Each team also received a project box with model kits and assembly instructions to begin their projects. The competition will conclude in April 2025 with students presenting their designs and testing their models.



150 TRAINING VIDEOS

Niftylift has also published its 150th operator training tutorial on its YouTube channel 'NiftyPro'. The videos are available in English, German and Dutch and are categorised by specific topics including quick start guides, charging, recovery from base instructions, loading and lashing as well as familiarisation tutorials.

Managing director John Keely said: "As safety and efficiency become even more important the growing NiftyPro library offers a user friendly training solution that helps improve safety, while supporting operator confidence and helping boost machine uptime, thanks to regular inspections and checks etc. Reaching 150 uploads is an exciting milestone in our mission to make training more accessible and effective."

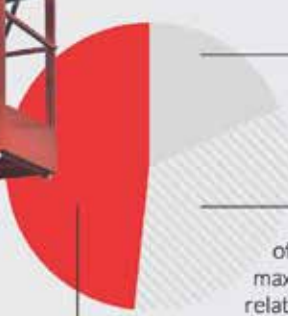


BRAVI

PLATFORMS

BRAVI-PLATFORMS.COM


Leonardo HD is not only a platform, it is a revolution in safety and productivity on the jobsite.



18,53%
of jobsites has ceilings higher than 5mt (16ft).


92,72% of scissor lifts sold between 2017 and 2023 are used in projects where ceilings are max. 5mt (16ft) high.*

*Introspective Market Research, Global Scissor Lift Market Research Report 2024



48,07%
of jobsites has ceilings with max. height of 5mt (16ft).
Compatible with Leonardo HD.

*Introspective Market Research, Global Construction Market Research Report 2024



bauma
APRIL 7-11, 2025, MUNICH
STAND - FS 1104/6

LIEBHERR'S USED EQUIPMENT APP

Liebherr has launched its used equipment marketplace as an app allowing individuals to find used machines, attachments and spare parts on their phones or mobile devices.

Launched in partnership with used equipment specialist Krank, the web version went live last May and allows buyers to search for equipment using filters such as brand, model, year and price. Products listed include cranes, telehandlers, earthmoving equipment, attachments from Liebherr and other manufacturers.

Sellers can also create and share adverts, build customised networks, and share exclusive offers with selected groups. The app also includes a dashboard providing performance data on adverts to help sellers refine their strategies. Users are also kept informed of new listings and updates within their network.



SKYJACK E DRIVE SCISSORS ARRIVE IN EUROPE

Skyjack has confirmed its E-Drive scissor lifts are available to order in Europe, Australia and New Zealand. The new lifts were launched in North America in 2023 and in Asia at the end of November.

The new machines employ AC brushless electric wheel motors for the drive function, in place of hydraulic motors, eliminating around 60 percent of all hydraulic fittings helping reduce the risk of leaks while boosting battery life by 20 percent - more for extended drive applications.



700 DINGLI LIFTS FOR MTANDT

Indian sales and rental company Mtandt Rentals has ordered 700 Dingli work platforms - 370 boom lifts and 330 AC+ scissor lifts - in a deal worth \$25 million.

Mtandt sells and rents Dingli aerial work platforms as well as CMC and Teupen spider lifts from locations in Chennai, Bangalore, Mumbai, Ahmedabad and Delhi as well as Colombo in Sri Lanka and Qatar in the Middle East. It also manufactures scaffold, safety nets and temporary road mats.



A SIMPLE SOLUTION ALWAYS HIDES A GREAT IDEA.

bauma | We'll wait for you!
APRIL 7-13, 2025, MUNICH | Outdoor area: FS1103/10

CTE ZETA 24 J

PERFORMANCE:
WORKING HEIGHT 24 m
OUTREACH 12 m
CAPACITY MAX 250 kg

THE NEW ZETA RANGE:
DOUBLE PANTOGRAPH WITH DOUBLE EXTENSION TO MAXIMISE THE ENTIRE WORKING AREA TOGETHER WITH THE INNOVATIVE S3 EVO!

Tel +39 0464 48.50.50
www.ctelift.com
info@ctelift.com

Headquarter:
CTE SpA - Via Caproni, 7 - 38068 Rovereto (TN) - Italy

Factories:
Loc. Terramatta, 5 - 37010 Rivoli V.se (VR) - Italy
via E. Fermi, 2 - 37010 Affi (VR) - Italy



FINANCIALS ROUND-UP

Ashtead - owner of **Sunbelt Rentals** in the USA, Canada and the UK - saw first half revenues improve two percent to \$5.69 billion, with all three operations contributing. However, pre-tax profit slipped four percent to \$1.25 billion due to higher depreciation and interest costs.



HALF YEAR RESULTS

First half results by country

USA: revenues: \$4.84 billion +2% with an operating profit of \$1.43 billion -3.4%

Canada: revenues: c\$508 million +14% with an operating profit of c\$11.3 million +39%

UK: revenues: £371.1 million +3.5% with an operating profit of £36.5 million +12%

Capital expenditure was 33.5% lower at \$1.68 billion than for the same period last year, the average age of the fleet at the end of the period was 47 months. Full year capital expenditure will be between \$2.5-\$2.7 billion.

Net Debt at the end of October was almost three percent higher at \$10.95 billion.

UK rental group **Vp** - owner of **UK Forks**, **MEP** and **Brandon Hire Station** - posted first half revenues of £192.5 million for the six months to the end of September, up one percent on last year. Pre-tax profit declined two percent to £19.5 million.



UK revenues: £162.6 million -1.8% with an operating profit of £21.37 million -3%.

International revenues: £29.5 million +17% with an operating profit of £4.5 million +5%

Capital expenditure totalled £41.5 million, up 3.1 percent, while disposals were lower at around £1.4 million. **Net debt** was £140.4 million +5%.

Bailey is the new name for **Bailey International**, **Sure Grip Controls**, and **Hydrolico International** which have merged. Bailey International specialises in mobile hydraulic solutions, Sure Grip Controls manufactures electronic control systems and Hydrolico International manufactures custom hydraulic components.



UK Tool Hire Group has acquired UK based rental company **Warren Access** in an all share purchase deal. UK Tool Hire is based in Ilkeston, Derbyshire with depots in Tipton and Nottingham. Warren runs a fleet of low level, self-propelled and vehicle mounted platforms from locations in Newcastle and Huntingdon along with IPAF and PASMA training operations. Founded in 1983 it is owned by Graeme and Michelle Warren. The company will continue to operate under the Warren name while adding UK Tool Hire's wider product range.



French rental company **Acces Industrie** has acquired family owned access and telehandler rental company **Huet Location** which runs 2,500 units from eight locations around France. Annual revenues are in the region of €25 million. Details of the transaction have not yet been released. The move consolidates Acces Industrie's position as the third largest access related rental company in France and comes around eight months after family owned investment company **Delmas Investissements & Participations** acquired a controlling stake in the business from Equistone.



Bowers & Bowers Holdings, owned by Ben and Malcolm Bowers, has acquired UK lifting and safety gear supplier **Humberside Lifting Services** (HLS). Based in Scunthorpe, Humberside Lifting was established in 2010 by current owner, Malcolm Armstrong and sells, rents, services, inspects and repairs a wide range of lifting gear and safety equipment.



Tadano has completed the acquisition of **Manitex International**. The business includes



Manitex truck cranes and boom trucks, **PM** loader cranes, **Valla** electric pick & carry cranes, and **Oil & Steel** aerial work platforms. It also includes **Rabern Rentals**, a four location rental company in Texas, which offers aerial lifts, telehandlers and general rental equipment. The acquisition also includes five manufacturing locations across Italy and the USA.

French international rental group **Kiloutou** has acquired Spanish rental companies **Liftisa** and **Global Movingrent**, both of which are majority owned and managed by access industry veteran **Ivan Papell**. The move adds six additional branches in Catalonia, Madrid and Valencia to Kiloutou's Spanish depot network while adding 2,600 additional machines to its access rental fleet, particularly in the low level platform and vehicle mounted lift market sectors.



Italian rental group **Mollo Noleggio** has acquired **Sovecar**'s rental division, taking it into the Trentino region of North East Italy for the first time. The acquired business is based in Trento with branches in Isera on the south side of Rovereto and Arco to the south west. They will adopt the Mollo brand and be integrated into the group. The move takes Mollo's depot network to 66 rental centres with more than 600 employees.



Konecranes has acquired two subsidiaries of Dutch lifting and logistics group **Peinemann - Peinemann Port Services** and **Peinemann Container Handling**. Peinemann Container Handling has been distributing Konecrane lift trucks in the Netherlands since 2009. The deal was agreed in October but has now received the all-clear from Dutch completion authorities. Konecranes says some 100 employees will join the company and that the acquisition will have no impact on its distribution arrangements outside of the Netherlands.



MO407TE

VERTICAL MAST LIFT

NEW
LAUNCH

MO407TE WITH EXTENSION DECK

- Improved reach with added 0.4m extension deck
- Compact design and exceptional maneuverability for confined spaces
- Durable and reliable choice

bauma

7-13. APRIL 2025, MÜNCHEN

BOOTH NO. FS.1105/1A

LAUNCH
OFFER

GET THE NEW MO407TE WITH AN EXTENSION DECK AT
THE PRICE OF THE STANDARD MODEL!



LINGONG HEAVY MACHINERY CO., LTD.

Address: No. 2676, Kejia Road, Jinan, Shandong, China
Email: sales@lmg.com.cn Tel: +86 531 6787 9283

LGMG Europe B.V.

Address: Donker Duyvisweg 301, 3316 BL Dordrecht, The Netherlands
Email: sales@lmg-europe.com Tel: +31 850 642 777

LGMG Machinery U.K. Ltd

Address: Unit 6 Spitfire Court, Triumph Business Park, Speke, Liverpool, L24 9GQ
Email: sales@lmg-europe.com Tel: +44(0)151 559 4506

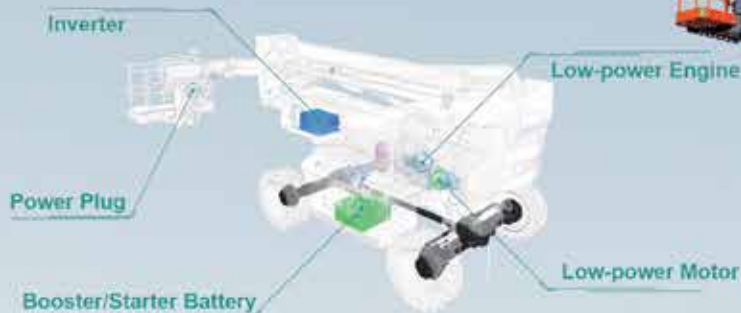
www.lmg-lifts.com

 **LGMG**

RELIABILITY IN ACTION

DINGLI

Exceed New Height



Mild Hybrid

- Battery can be used as a starter battery
- In normal conditions, the low-power engine can charge the battery
- In complex conditions, the battery provides additional torque output
- The inverter and battery support normal operation of an upper frame welding machine
- Low-power engine can be filled with renewable biodiesel, energy saving, environmental protection



AC+ Series Scissor Aerial Work Platform

ZHEJIANG DINGLI MACHINERY CO.,LTD.

ADD:188 Qihang Road, Leidian Town, Deqing, Zhejiang, P.R.C

TEL:+86-572-8681688

Phone:+86-13806523131 Susan Huang

E-Mail:export@cndingli.com

Https://en.cndingli.com



NEWS HIGHLIGHTS

- Germany's **Gerken** has taken delivery of 100t **Tadano AC 4.100L-1 AT**
- Dubai based **Rapid Access** has taken a 'large number of **Dingli** booms and scissors'
- Germany's **Motz** has taken a 51m **Ruthmann T510 HF** truck mount its largest to date
- United Rentals** has appointed **Julie Brandt** to the board
- UK's **Southern Cranes & Access** has taken a **Liebherr MK 140-5.1** with a second on the way
- Tadano** has opened two repair shops in the **USA - Texas** and **Virginia**
- Germany's **Wörle** has taken a 30m **Ruthmann T 300** and a 33m **T 330 XS**
- Manitowoc** has introduced its new **Extended Service Coverage** programme for **Grove GMK** cranes in **North America**
- UK's **J&M Crane & Transport** has taken a 100 tonne **Grove GMK 4100L-2**
- Dutch rental company **Hoogwerkt** has taken delivery of 80 **Dingli** aerial work platforms
- UK's **EnerMech** has appointed **Jason Harrower** as HSE director
- UK's **County Lifting** has taken two 15 tonne **JMG MC100-08** pick & carry cranes
- JCB** has approval from 11 European licensing authorities for the commercial use and sale of its **hydrogen** engine
- UK's **Blade Access** has appointed **John Chandler** as business development manager
- UK's **NMT Crane Hire** has appointed **Mikey York** as technical sales manager
- UK's **Macsalvors** has taken two 100t **Grove GMK4100L-2 ATs**
- UK's **Cherry Picker Shop** is changing its name to **CPS Access Platform Parts** and appointed **Ben Jones** as field based key accounts manager
- Tadano America** has appointed **Jack Fendrick** as chief operating officer
- Kone cranes** president and CEO **Anders Svensson** will leave the company
- Germany's **Atlas** has appointed **Crane Ukraine** as distributor for the country
- UK's **McGovern Crane Hire** has taken a **Liebherr LTM 1060-3.1**
- Noblelift** North America has recruited **Bill Pedriana** to replace **Loren Swakow** who retires
- Saudi Arabia based **AMHEC** has ordered 100, 80 tonne **Tadano RT** cranes
- Ahern Ireland**, the **Snorkel** distribution facility in **Dublin**, will close at the end of **March**
- Crane and access industry veteran **Tim Whiteman** has left **Sinoboom** and is moving to **Noblelift**
- Spierings** has appointed **Tim Leech** as area sales manager, **UK & Ireland**
- Germany's **Härzschel Kranverleih** has taken a 220t **Tadano AC 5.220-1 AT**
- South Korea's **Lee Gang** has taken a 250t **Grove GMK5250XL-1**
- Irish tower crane company **Mantis Cranes** has celebrated its 25th anniversary
- Hoeflon UK** has recruited **Steve Bloomer** to sales and customer support
- Texas rental industry veteran **Don O'Neal** has died
- Bronto Skylift** has produced its 8,000th aerial work platform



Julie Brandt



Jason Harrower



John Chandler



Jack Fendrick



Bill Pedriana



Loren Swakow



Tim Leech



Steve Bloomer

- Riwal** has launched a new emissions calculator to estimate equipment CO2 and nitrogen oxide emissions
- UK based **DLH Lifting Services** has taken its first **Liebherr** - a 60t **LTM 1060-3.1**
- Dingli India** has appointed **Pankaj Gupta** to its board and **R. Hariharan** as CEO for **SAARC** countries
- Mammoet** is replacing five bridges at **Amsterdam Centraal Station**
- Dutch company **Kuiphuis Kraanverhuur** has taken its third **Spierings SK2400-R** elift
- Gill Riley**, managing director and co-founder of UK based **GGR** has received a **CBE**
- Ruthmann** has appointed engineering company **Hiarom** as its distributor for **Romania**
- Skyjack** has promoted **Matt Taviani** to VP sales for **North America**
- Kito Crosby** is the official supplier of lifting/rigging equipment for **The Ocean Cleanup**
- Brian Hogg** of UK based **H&A Height Services** has died
- France's **Joly Location** has taken a 52m **Palazzani Ragno XTJ 52+** spider lift
- Germany's **Odenbach Transporte** has taken a **Faymonville MultiMax** low loader
- UK's **King Lifting** has appointed **Vince Ramsden** as sales director
- UK based **Roadcraft Crane and Plant** has taken a **Liebherr LTM 1060-3.1**
- Turkey's **Aydintas** has taken two 450t **Liebherr LTM 1450-8.1 ATs**
- WS Skyworker** has taken Switzerland's first electric **Manitou MRT Vision 2660e** telehandler
- UK's **APS - Access Platform Sales** - has appointed **Dan Coe** as digital marketing specialist
- MEC Aerial Work Platforms** has appointed **Tilar Pleas** as a regional sales manager **Northwest USA**
- UK's **Steel Work Construction (SWC)** has taken two 90t **Liebherr LTM 1090-4.2s** and one 150t **LTM 1150-5.3**
- Alimak** has a five year agreement with window cleaning robot producer **Skyline Robotics**
- Canada's **DeSantis Crane Service** has taken a 180t **Liebherr LTM 1160-5.2**
- MEC Aerial Work Platforms** has appointed **Forrest Rickman** as a regional sales manager **South East USA**
- Genie** hosted the UK's **Access Alliance** year end meeting
- Manitowoc** has agreed to settle alleged violations relating to the **Clean Air Act**
- Liebherr** has started work on its new \$176 million logistics centre in **Tupelo, Mississippi**
- Czech's **Sico** has taken its 500th **Haulotte** aerial lift, a 33ft **HA12CJ**
- US based **Hy-Brid Lifts** has appointed **David Porter** as VP sales & marketing
- US based **Prillaman's Crane & Rigging** has taken a 300t **Liebherr LTM 1300-6.2**
- UK access industry veteran **Roger Thorington** has died
- Hiab** has appointed the Utility Truck Crane division of Florida's **Ring Power** to distribute its loader cranes and **Moffett** 'piggy back forklifts' in **Florida**
- Italy's **Imprecom** has taken a **Raimondi T147** flat top tower crane for work in **Milan**
- Danfoss** has promoted **Daniel Winter** to president



Pankaj Gupta



R. Hariharan



Matt Taviani



Vince Ramsden



Tilar Pleas



Forrest Rickman



David Porter



Daniel Winter

- CTE** has appointed **Fabio Agostini** to its Italian sales team
- Brazil's **Guindastes Tatuapé** has taken a 450t **Grove GMK450-1 All Terrain**
- UK's **Abba Plant Hire** has taken 10 **JCB 45ft** hybrid articulated 4x4 boom lifts
- France's **Uperio** has appointed **Ingo Schiller** as president of its **North American** business
- UK's **PP Engineering** has taken a 40t **Liebherr LTM 1040-2.1**
- Germany's **BSI** has taken a 180ft **Genie SX-180** boom - its largest to date
- Riwal CFO René Timmers** will leave the company at the end of **March**
- Italy's **Berni Rent** has ordered some 16m **Multitel MXE 160** on **Ford Ranger** chassis and an **MX210**
- Brad Boehler** has been appointed president of **Makinex USA**
- Flynn Crane Hire** has taken the first 450t **Tadano AC 7.450-1** in **Ireland**
- Kito Crosby** has appointed **Jason Bulan** as VP business development
- Ebbe Christensen**, CEO of **North American** distributor **Ruthmann Reachmaster** has left the company along with half the staff
- India's **Aparna Group** has taken a number of **Potain MCT 85** tower cranes
- inspHire** has appointed **Jason Bradshaw** as sales director of the **UK/Europe, the Middle East and Africa**
- Wales' **R W Christopher** has taken a 150 tonne **Liebherr LTM 1150-5.3**
- Germany's **Kurth Autokrane** has taken a 60 tonne **Liebherr LTF 1060-4.1** truck crane
- LGMG** has appointed **Phill Tymanskyj** and **David Plumtree** to its **UK** service team
- Germany's **Richter Kran und Schwerlast** has taken a 100 tonne **Liebherr LTM 1100-5.3**
- Germany's **Meyerlift** has taken two **CMC** spider lifts
- UK's **Contract Plant** has appointed **James Bickerton** as managing director
- Germany's **Hainthaler** has taken the country's first 67ft **JLG 670S** self levelling boom
- Greece's **Consolidated Construction Contractors** has taken five big **Genie** boom lifts for a project in **Qatar**
- Dinolift** has appointed **Precision Aerial Services** as distributor for **south west USA**
- US based **Oz Lifting Products** is celebrating 20 years in business by moving to a new facility
- Norway's **Sea1 Offshore** has ordered two 250t **Huisman** knuckle boom cranes
- UK based **Central Crane Hire** has taken a **Liebherr 180t LTM 1160-5.2**
- A 2.4 tonne **Stafford STF 7022 TL** tower crane has been installed at the **Goldwynn Resort** in the **Bahamas**
- UK's **Collet & Sons** has opened a new office in **Bradford**
- Germany's **Auto Kurz** has taken a 70 tonne **Liebherr LTM 1070-4.2**
- Crane veteran **Skeeter Collins** currently with **Link-Belt** retires at the end of **February**



Fabio Agostini



Ingo Schiller



Brad Boehler



Jason Bradshaw



Phill Tymanskyj



David Plumtree



Skeeter Collins

See www.Vertikal.net news archive for full versions of all these stories